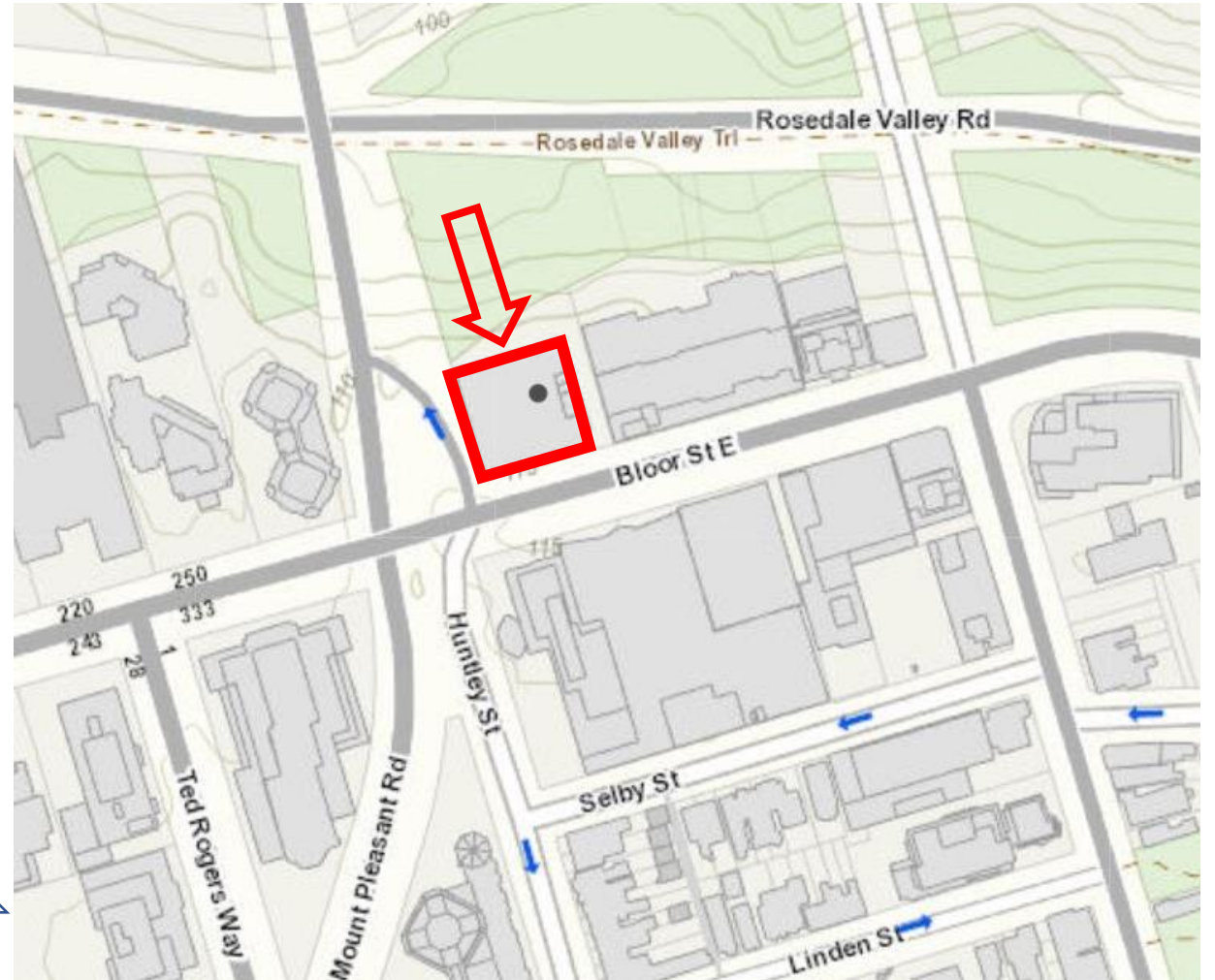




PB11.7

350 Bloor Street East- Alterations to a Designated Property

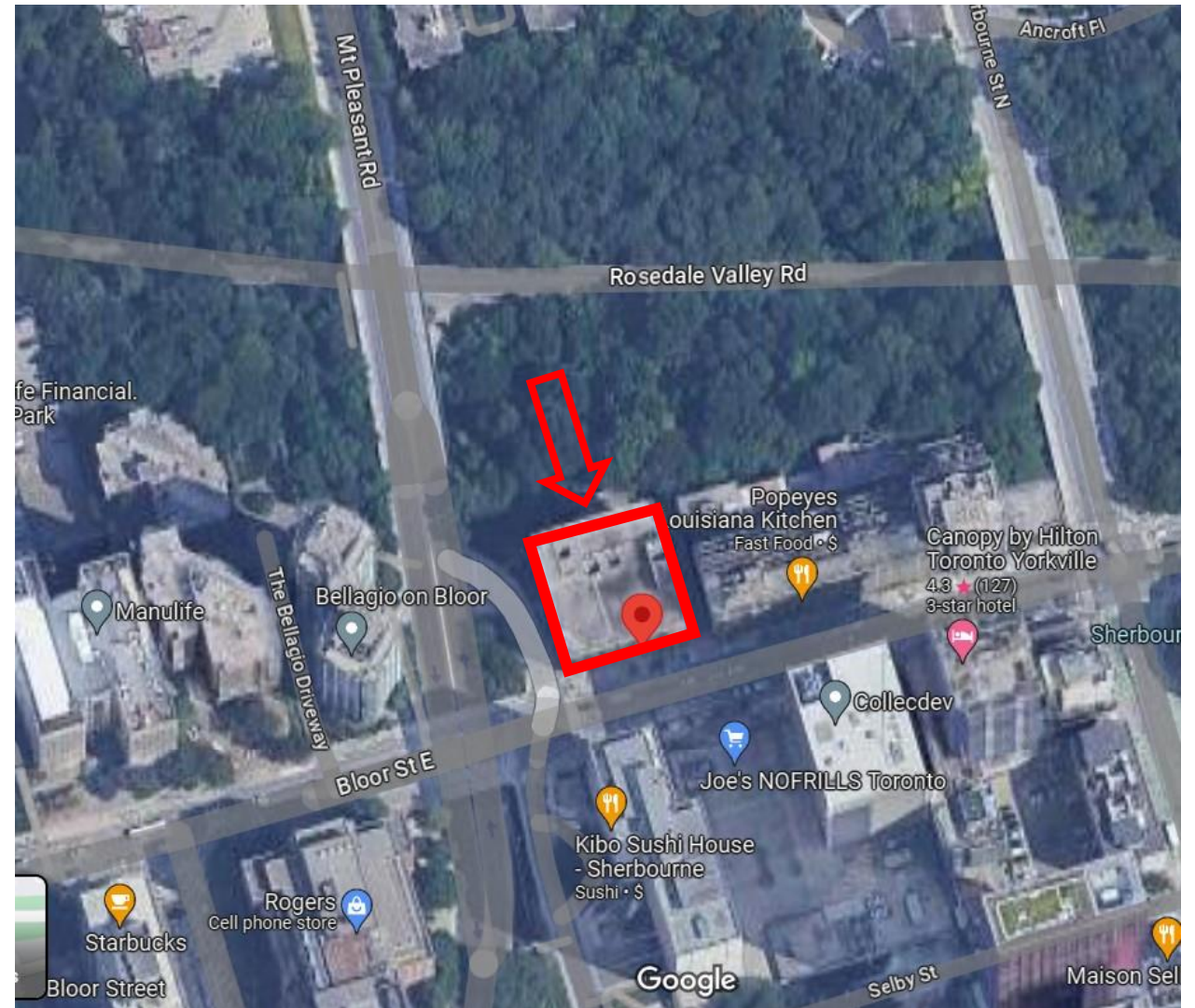
PB11.7
350 Bloor Street East



This location map is for information purposes only; the exact boundaries of the property is not shown. The arrow marks the location of the site.

PB11.7
350 Bloor Street East

Aerial View-
350 Bloor Street East (Google Maps 2023)



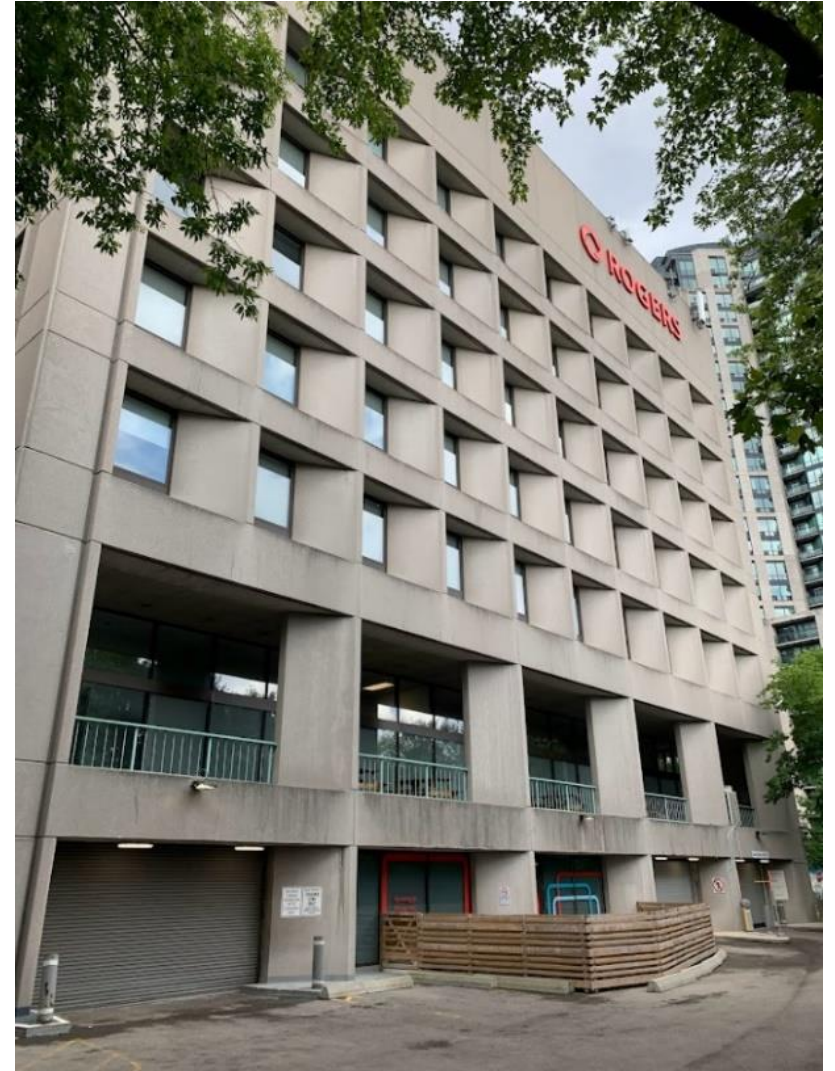
PB11.7
350 Bloor Street East

View looking northeast from Bloor Street East showing the south and west elevations of 350 Bloor Street East (Heritage Planning, 2023)



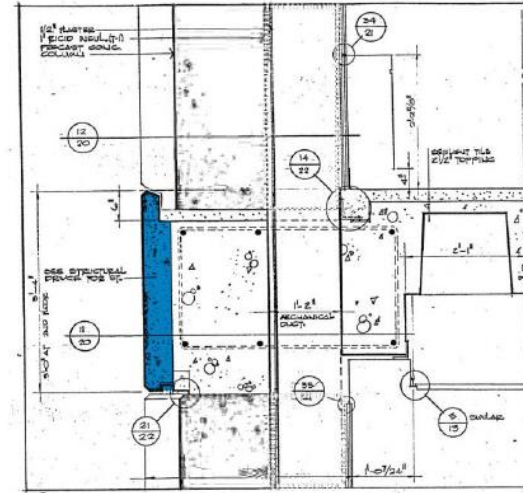
PB11.7
350 Bloor Street East

View of the north elevation with a colonnaded pedestrian terrace and exposed lower level with entrance to the second lower level parking garage. (Heritage Planning, 2023)

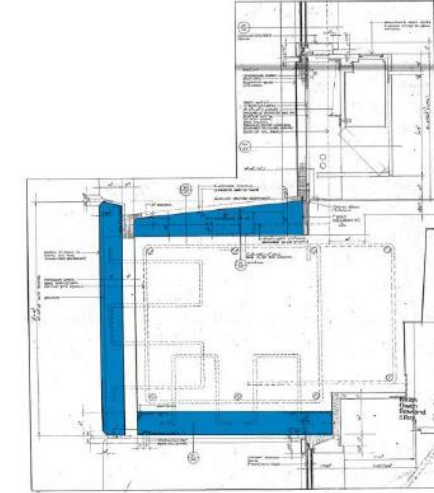


PB11.7 350 Bloor Street East

Archival drawings of the spandrel panels
(ERA Architects Inc.)

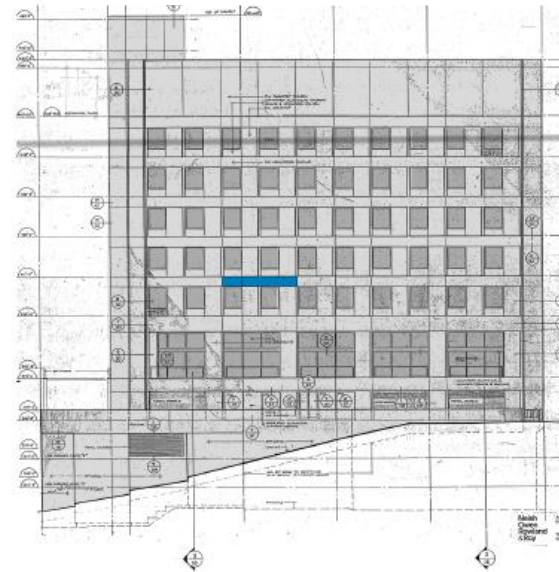


Section at spandrel panels (edge of slab)

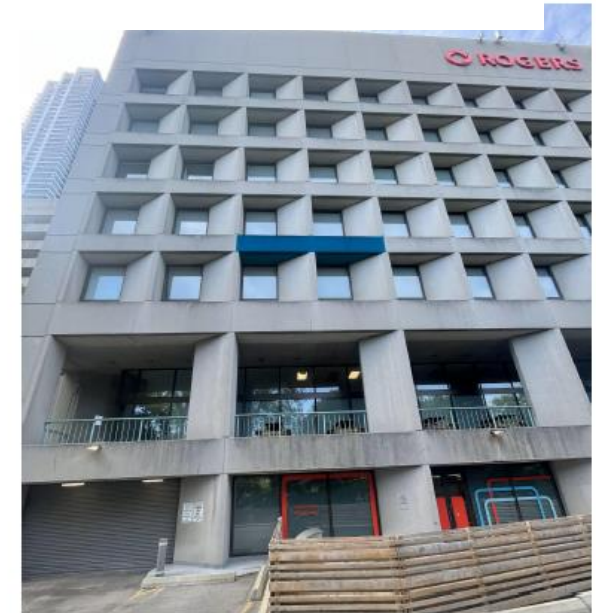


Section at spandrel panels (window sill)

Images showing archival drawing and site photo
of the North Elevation of 350 Bloor Street East
and location of one of the precast concrete panels
to be removed and re-installed.



North Elevation – Archival Drawing



North Elevation – Site Photo

PB11.7
350 Bloor Street East

Thank You!

