

APPENDIX D - Statements of Contribution

Address 110 SEATON ST

Period pre - 1890

Type Row

Architectural Style(s) Victorian

Storeys 2.5

Character Area Residential Area

Materials Brick exterior cladding, decorative
woodwork, and asphalt shingle roofing



Statement of Contribution

This residential property was built as part of a group of six row houses (106-116) in the Victorian style. The building contributes to the physical integrity of the district through its residential character, original architectural details and design characteristics.

District Design/Physical Value

- Its 2 ½ storey façade contributes to the low rise predominant scale of the district.
- Its fine grain built form with a slightly raised entrance and setback from the street, with a front yard contributes to a well defined and articulated streetwall.
- Its Victorian style is evidenced by the segmental arch bay windows at first and second storey, segmental arch window at second storey, and the flat headed transom window above front door. The style is also supported by its architectural detailing such as the dogtooth brick insets under second storey bay windows, and the soldier and dogtooth brick voussoirs; and its surviving wood work such as the triangular wood panels at front gable, and the ionic columns and architrave with dentils at front porch.

District Contextual Value

- Its architectural style, its materiality and its scale contribute to the cohesiveness of the neighbourhood's built form.
- It supports the residential character of the long north-south streets.

District Historic/Associative Value

- Its narrow lot and its construction as part of a series of properties reflect the development of the district by small scale builders who built out short stretches of houses.

District Social/Community Value (when applicable)

APPENDIX D - Statements of Contribution

Address 112 SEATON ST

Period pre - 1890

Type Row

Architectural Style(s) Victorian

Storeys 2.5

Character Area Residential Area

Materials Brick exterior cladding, decorative
woodwork, and asphalt shingle roofing



Statement of Contribution

This residential property was built as part of a group of six row houses (106-116) in the Victorian style. The building contributes to the physical integrity of the district through its residential character, original architectural details and design characteristics.

District Design/Physical Value

- Its 2 ½ storey façade contributes to the low rise predominant scale of the district.
- Its fine grain built form with a slightly raised entrance and setback from the street, with a front yard contributes to a well defined and articulated streetwall.
- Its Victorian style is evidenced by the segmental arch bay windows at first and second storey, segmental arch window at second storey, and the flat headed transom window above front door. The style is also supported by its architectural detailing such as the dogtooth brick insets under second storey bay windows, and the soldier and dogtooth brick voussoirs; and its surviving wood work such as the triangular wood panels at front gable, and the ionic columns and architrave with dentils at front porch.

District Contextual Value

- Its architectural style, its materiality and its scale contribute to the cohesiveness of the neighbourhood's built form.
- It supports the residential character of the long north-south streets.

District Historic/Associative Value

- Its narrow lot and its construction as part of a series of properties reflect the development of the district by small scale builders who built out short stretches of houses.

District Social/Community Value (when applicable)

APPENDIX D - Statements of Contribution

Address 114 SEATON ST

Period pre - 1890

Type Row

Architectural Style(s) Victorian

Storeys 2.5

Character Area Residential Area

Materials Brick exterior cladding, decorative
woodwork, and asphalt shingle roofing



Statement of Contribution

This residential property was built as part of a group of six row houses (106-116) in the Victorian style. The building contributes to the physical integrity of the district through its residential character, original architectural details and design characteristics.

District Design/Physical Value

- Its 2 ½ storey façade contributes to the low rise predominant scale of the district.
- Its fine grain built form with a slightly raised entrance and setback from the street, with a front yard contributes to a well defined and articulated streetwall.
- Its Victorian style is evidenced by the segmental arch bay windows at first and second storey, segmental arch window at second storey, and the flat headed transom window above front door. The style is also supported by its architectural detailing such as the dogtooth brick insets under second storey bay windows, and the soldier and dogtooth brick voussoirs; and its surviving wood work such as the triangular wood panels at front gable, and the decorative wood elements and pediment with fanlight detail at front porch.

District Contextual Value

- Its architectural style, its materiality and its scale contribute to the cohesiveness of the neighbourhood's built form.
- It supports the residential character of the long north -south streets.

District Historic/Associative Value

- Its narrow lot and its construction as part of a series of properties reflect the development of the district by small scale builders who built out short stretches of houses.

District Social/Community Value (when applicable)

APPENDIX D - Statements of Contribution

Address 115 SEATON ST

Period pre - 1878

Type Abutting

Architectural Style(s) Victorian

Storeys 2.5

Character Area Residential Area

Materials Brick exterior cladding and asphalt shingle roofing



Statement of Contribution

This residential property is a representative example of the Victorian style. It contributes to the physical integrity of the district through its residential character and design characteristics.

District Design/Physical Value

- Its 2 ½ storey façade and front setback contribute to the low rise predominant scale of the district and to a well defined and articulated streetwall.
- Its Victorian style is evidenced by the cross gabled roof; protruding front gable bay, segmental arch windows on protruding bay at first and second storeys. The style is also supported by its architectural detailing such as the soldier brick voussoirs.

District Contextual Value

- Its architectural style, its materiality and its scale contribute to the cohesiveness of the neighbourhood's built form.
- It supports the residential character of the long north-south streets.

District Historic/Associative Value

- Its narrow lot reflects the subdivision and development of the district by small scale builders.

District Social/Community Value (when applicable)

APPENDIX D - Statements of Contribution

Address 116 SEATON ST

Period pre - 1890

Type Row

Architectural Style(s) Victorian

Storeys 2.5

Character Area Residential Area

Materials Brick exterior cladding, decorative
woodwork, and asphalt shingle roofing



Statement of Contribution

This residential property was built as part of a group of six row houses (106-116) in the Victorian style. The building contributes to the physical integrity of the district through its residential character, original architectural details and design characteristics.

District Design/Physical Value

- Its 2 ½ storey façade contributes to the low rise predominant scale of the district.
- Its fine grain built form with a slightly raised entrance and setback from the street, with a front yard contributes to a well defined and articulated streetwall.
- Its Victorian style is evidenced by the segmental arch bay windows at first and second storey, segmental arch window at second storey, and the flat headed transom window above front door. The style is also supported by its architectural detailing such as the dogtooth brick insets under second storey bay windows, and the soldier and dogtooth brick voussoirs; and its surviving wood work such as the triangular wood panels at front gable, and the decorative wood elements and pediment with fanlight detail at front porch.

District Contextual Value

- Its architectural style, its materiality and its scale contribute to the cohesiveness of the neighbourhood's built form.
- It supports the residential character of the long north-south streets.

District Historic/Associative Value

- Its narrow lot and its construction as part of a series of properties reflect the development of the district by small scale builders who built out short stretches of houses.

District Social/Community Value (when applicable)

APPENDIX D - Statements of Contribution

Address 117 SEATON ST

Period pre - 1913

Type Abutting

Architectural Style(s) Edwardian

Storeys 2.5

Character Area Residential Area

Materials Brick exterior cladding and asphalt shingle roofing



Statement of Contribution

This residential property is a representative example of the Edwardian style. It contributes to the physical integrity of the district through its residential character and design characteristics.

District Design/Physical Value

- Its 2 ½ storey façade contributes to the low rise predominant scale of the district.
- Its fine grain built form with a slightly raised entrance and setback from the street, with a front yard contributes to a well defined and articulated streetwall.
- Its Edwardian style is evidenced by the side gabled roof; protruding front gable bay at second storey; flat headed windows at first and second storey, and flat headed bay windows at second storey.

District Contextual Value

- Its architectural style, its materiality and its scale contribute to the cohesiveness of the neighbourhood's built form.
- It supports the residential character of the long north-south streets.

District Historic/Associative Value

- Its narrow lot reflects the subdivision and development of the district by small scale builders.

District Social/Community Value (when applicable)

APPENDIX D - Statements of Contribution

Address 118 SEATON ST

Period pre - 1890

Type Abutting

Architectural Style(s) Victorian/Romanesque Revival

Storeys 2.5

Character Area Residential Area

Materials Brick exterior cladding, decorative
woodwork, and asphalt shingle roofing



Statement of Contribution

This residential property was built as part of a pair of houses (118-120), blending elements of Victorian and Romanesque Revival styles. It contributes to the physical integrity of the district through its residential character, original architectural details and design characteristics.

District Design/Physical Value

- Its 2 ½ storey façade contributes to the low rise predominant scale of the district.
- Its fine grain built form with a slightly raised entrance and setback from the street, with a front yard contributes to a well defined and articulated streetwall.
- Its Victorian/Romanesque Revival style is evidenced by its protruding first storey; round arch window at first storey, flat headed stained glass transom window at front door, flat headed windows at second storey, and the round arch window with wood shutter at front gable. The style is supported by its architectural detailing such as the brick lintel course at first and second storey, and the soldier brick lintels; and its surviving wood work such as the decorative wood fascia; and the decorative wood elements at entrance.

District Contextual Value

- Its architectural style, its materiality and its scale contribute to the cohesiveness of the neighbourhood's built form.
- It supports the residential character of the long north-south streets.

District Historic/Associative Value

- Its narrow lot and its construction as part of a pair of properties reflect the development of the district by small scale builders who built out short stretches of houses.

District Social/Community Value (when applicable)

APPENDIX D - Statements of Contribution

| | |
|-------------------------------|---|
| Address | 119 SEATON ST |
| Period | pre - 1919 |
| Type | Row |
| Architectural Style(s) | Edwardian |
| Storeys | 2.5 |
| Character Area | Residential Area |
| Materials | Brick exterior cladding and asphalt shingle roofing |



Statement of Contribution

This property was built as part of a group of three row houses (119-123) in the Edwardian style. It contributes to the physical integrity of the district through its residential character, original architectural details and design characteristics.

District Design/Physical Value

- Its 2 ½ storey façade contributes to the low rise predominant scale of the district.
- Its fine grain built form with a slightly raised entrance and setback from the street, with a front yard contributes to a well defined and articulated streetwall.
- Its Edwardian style is evidenced by the brick masonry; flat headed windows at first and second storey and flat headed dormer window.

District Contextual Value

- Its architectural style, its materiality and its scale contribute to the cohesiveness of the neighbourhood's built form.
- It supports the residential character of the long north-south streets.

District Historic/Associative Value

- Its narrow lot and its construction as part of a series of properties reflect the development of the district by small scale builders who built out short stretches of houses.

District Social/Community Value (when applicable)

APPENDIX D - Statements of Contribution

Address 120 SEATON ST

Period pre - 1890

Type Abutting

Architectural Style(s) Victorian/Romanesque Revival

Storeys 2.5

Character Area Residential Area

Materials Brick exterior cladding, decorative
woodwork, and asphalt shingle roofing



Statement of Contribution

This residential property was built as part of a pair of houses (118-120), blending elements of Victorian and Romanesque Revival styles. It contributes to the physical integrity of the district through its residential character, original architectural details and design characteristics.

District Design/Physical Value

- Its 2 ½ storey façade contributes to the low rise predominant scale of the district.
- Its fine grain built form with a slightly raised entrance and setback from the street, with a front yard contributes to a well defined and articulated streetwall.
- Its Victorian/Romanesque Revival style is evidenced by its protruding first storey; round arch window at first storey, flat headed stained glass transom window at front door, flat headed windows at second storey, and the round arch window with wood shutter at front gable. The style is supported by its architectural detailing such as the brick lintel course at first and second storey, and the soldier brick lintels; and its surviving wood work such as the decorative wood fascia, and the decorative wood elements at entrance.

District Contextual Value

- Its architectural style, its materiality and its scale contribute to the cohesiveness of the neighbourhood's built form.
- It supports the residential character of the long north-south streets.

District Historic/Associative Value

- Its narrow lot and its construction as part of a pair of properties reflect the development of the district by small scale builders who built out short stretches of houses.

District Social/Community Value (when applicable)

APPENDIX D - Statements of Contribution

Address 121 SEATON ST

Period pre - 1919

Type Row

Architectural Style(s) Edwardian

Storeys 2.5

Character Area Residential Area

Materials Brick exterior cladding and asphalt shingle roofing



Statement of Contribution

This property was built as part of a group of three row houses (119-123) in the Edwardian style. It contributes to the physical integrity of the district through its residential character, original architectural details and design characteristics.

District Design/Physical Value

- Its 2 ½ storey façade contributes to the low rise predominant scale of the district.
- Its fine grain built form with a slightly raised entrance and setback from the street, with a front yard contributes to a well defined and articulated streetwall.
- Its Edwardian style is evidenced by the brick masonry; flat headed windows at first and second storey and flat headed dormer window.

District Contextual Value

- Its architectural style, its materiality and its scale contribute to the cohesiveness of the neighbourhood's built form.
- It supports the residential character of the long north -south streets.

District Historic/Associative Value

- Its narrow lot and its construction as part of a series of properties reflect the development of the district by small scale builders who built out short stretches of houses.

District Social/Community Value (when applicable)

APPENDIX D - Statements of Contribution

Address 122 SEATON ST

Period pre - 1873

Type Abutting

Architectural Style(s) Georgian Revival

Storeys 2

Character Area Residential Area

Materials Brick exterior cladding and asphalt shingle roofing



Statement of Contribution

This residential property is a representative example of the Georgian Revival style. It contributes to the physical integrity of the district through its residential character and design characteristics.

District Design/Physical Value

- Its 2 storey façade and front setback contribute to the low rise predominant scale of the district and to a well defined and articulated streetwall.
- Its Georgian Revival style is evidenced by the segmental arch window opening with soldier brick voussoirs and transom window over front door and cross gable roof.

District Contextual Value

- Its architectural style, its materiality and its scale contribute to the cohesiveness of the neighbourhood's built form.
- It supports the residential character of the long north -south streets.

District Historic/Associative Value

- Its narrow lot reflects the subdivision and development of the district by small scale builders.

District Social/Community Value (when applicable)

APPENDIX D - Statements of Contribution

Address 123 SEATON ST

Period pre - 1919

Type Row

Architectural Style(s) Edwardian

Storeys 2.5

Character Area Residential Area

Materials Brick exterior cladding, decorative
woodwork, and asphalt shingle roofing



Statement of Contribution

This property was built as part of a group of three row houses (119-123) in the Edwardian style. It contributes to the physical integrity of the district through its residential character, original architectural details and design characteristics.

District Design/Physical Value

- Its 2 ½ storey façade contributes to the low rise predominant scale of the district.
- Its fine grain built form with a slightly raised entrance and setback from the street, with a front yard contributes to a well defined and articulated streetwall.
- Its Edwardian style is evidenced by the brick masonry; flat headed window at first storey, flat headed bay windows at second storey and flat headed dormer window with wood pediment.

District Contextual Value

- Its architectural style, its materiality and its scale contribute to the cohesiveness of the neighbourhood's built form.
- It supports the residential character of the long north-south streets.

District Historic/Associative Value

- Its narrow lot and its construction as part of a series of properties reflect the development of the district by small scale builders who built out short stretches of houses.

District Social/Community Value (when applicable)

APPENDIX D - Statements of Contribution

Address 125 SEATON ST

Period pre - 1919

Type Row

Architectural Style(s) Edwardian

Storeys 2.5

Character Area Residential Area

Materials Brick exterior cladding and asphalt shingle roofing



Statement of Contribution

This property was built as part of a group of three row houses (125-129) in the Edwardian style. It contributes to the physical integrity of the district through its residential character, original architectural details and design characteristics.

District Design/Physical Value

- Its 2 ½ storey façade and front setback contribute to the low rise predominant scale of the district and to a well defined and articulated streetwall.
- Its Edwardian style is evidenced by the brick masonry; flat headed window at first storey, flat headed bay windows at second storey and flat headed dormer window.

District Contextual Value

- Its architectural style, its materiality and its scale contribute to the cohesiveness of the neighbourhood's built form.
- It supports the residential character of the long north-south streets.

District Historic/Associative Value

- Its narrow lot and its construction as part of a series of properties reflect the development of the district by small scale builders who built out short stretches of houses.

District Social/Community Value (when applicable)

APPENDIX D - Statements of Contribution

Address 126 SEATON ST

Period pre - 1878

Type Abutting

Architectural Style(s) Italianate

Storeys 2.5

Character Area Residential Area

Materials Brick exterior cladding, decorative
woodwork, and asphalt shingle roofing



Statement of Contribution

This residential property is a representative example of the Italianate style. It contributes to the physical integrity of the district through its residential character, original architectural details and design characteristics.

District Design/Physical Value

- Its 2 ½ storey façade contributes to the low rise predominant scale of the district.
- Its fine grain built form with a slightly raised entrance and setback from the street, with a front yard contributes to a well defined and articulated streetwall.
- Its Italianate style is evidenced by the segmental arch windows with fanlight detail at first storey, flat headed transom window above front door, segmental arch windows at second storey, and the round arch window at front gable. The style is also supported by its architectural detailing such as the soldier brick voussoirs and shoulders with wood brackets, and the stone keystones; and its surviving wood work such as the wood sills with brackets; paired wood brackets with wood cornice under roof eave, and the simple decorative wood fascia with gable drop at front gable.

District Contextual Value

- Its architectural style, its materiality and its scale contribute to the cohesiveness of the neighbourhood's built form.
- It supports the residential character of the long north-south streets.

District Historic/Associative Value

- Its narrow lot reflects the subdivision and development of the district by small scale builders.

District Social/Community Value (when applicable)

APPENDIX D - Statements of Contribution

Address 127 SEATON ST

Period pre - 1919

Type Row

Architectural Style(s) Edwardian

Storeys 2.5

Character Area Residential Area

Materials Brick exterior cladding, decorative
woodwork, and asphalt shingle roofing



Statement of Contribution

This property was built as part of a group of three row houses (125-129) in the Edwardian style. It contributes to the physical integrity of the district through its residential character, original architectural details and design characteristics.

District Design/Physical Value

- Its 2 ½ storey façade contributes to the low rise predominant scale of the district.
- Its fine grain built form with a slightly raised entrance and setback from the street, with a front yard contributes to a well defined and articulated streetwall.
- Its Edwardian style is evidenced by the brick masonry; flat headed window at first storey, flat headed bay windows at second storey and flat headed dormer window.

District Contextual Value

- Its architectural style, its materiality and its scale contribute to the cohesiveness of the neighbourhood's built form.
- It supports the residential character of the long north-south streets.

District Historic/Associative Value

- Its narrow lot and its construction as part of a series of properties reflect the development of the district by small scale builders who built out short stretches of houses.

District Social/Community Value (when applicable)

APPENDIX D - Statements of Contribution

Address 128 SEATON ST

Period pre - 1878

Type Abutting

Architectural Style(s) Victorian/Romanesque Revival

Storeys 3

Character Area Residential Area

Materials Brick exterior cladding, decorative
woodwork, and asphalt shingle roofing



Statement of Contribution

This property was built as part of a pair of houses (128-130), blending elements of Victorian and Romanesque Revival styles. It contributes to the physical integrity of the district through its residential character, original architectural details and design characteristics.

District Design/Physical Value

- Its 3 storey façade contributes to the low rise predominant scale of the district.
- Its fine grain built form with a slightly raised entrance and setback from the street, with a front yard contributes to a well defined and articulated streetwall.
- Its Victorian/Romanesque Revival style is evidenced by its protruding bay at front gable; round arch window at first storey; segmental arch windows at second storey, and the flat headed windows at front gable. Its style is also supported by the brick lintel and sill courses, and the soldier brick voussoirs; and its surviving wood work such as the decorative wood elements at portico, and the decorative wood gable panel with gable drop.

District Contextual Value

- Its architectural style, its materiality and its scale contribute to the cohesiveness of the neighbourhood's built form.
- It supports the residential character of the long north-south streets.

District Historic/Associative Value

- Its narrow lot and its construction as part of a pair of properties reflect the development of the district by small scale builders who built out short stretches of houses.

District Social/Community Value (when applicable)

APPENDIX D - Statements of Contribution

Address 129 SEATON ST

Period pre - 1919

Type Row

Architectural Style(s) Edwardian

Storeys 2.5

Character Area Residential Area

Materials Brick exterior cladding, decorative
woodwork, and asphalt shingle roofing



Statement of Contribution

This property was built as part of a group of three row houses (125-129) in the Edwardian style. It contributes to the physical integrity of the district through its residential character, original architectural details and design characteristics.

District Design/Physical Value

- Its 2 ½ storey façade contributes to the low rise predominant scale of the district.
- Its fine grain built form with a slightly raised entrance and setback from the street, with a front yard contributes to a well defined and articulated streetwall.
- Its Edwardian style is evidenced by the brick masonry; flat headed window at first storey, flat headed bay windows at second storey and flat headed dormer window.

District Contextual Value

- Its architectural style, its materiality and its scale contribute to the cohesiveness of the neighbourhood's built form.
- It supports the residential character of the long north-south streets.

District Historic/Associative Value

- Its narrow lot and its construction as part of a series of properties reflect the development of the district by small scale builders who built out short stretches of houses.

District Social/Community Value (when applicable)

APPENDIX D - Statements of Contribution

Address 130 SEATON ST

Period pre - 1878

Type Abutting

Architectural Style(s) Victorian/Romanesque Revival

Storeys 3

Character Area Residential Area

Materials Brick and stone exterior cladding, decorative woodwork, and asphalt shingle roofing



Statement of Contribution

This property was built as part of a pair of houses (128-130), blending elements of Victorian and Romanesque Revival styles. It contributes to the physical integrity of the district through its residential character, original architectural details and design characteristics.

District Design/Physical Value

- Its 3 storey façade contributes to the low rise predominant scale of the district.
- Its fine grain built form with a slightly raised entrance and setback from the street, with a front yard contributes to a well defined and articulated streetwall.
- Its Victorian/Romanesque Revival style is evidenced by its protruding bay at front gable; round arch window at first storey, segmental arch windows at second storey, and the flat headed windows at front gable. Its style is also supported by the brick lintel and sill courses, and the soldier brick voussoirs; and its surviving wood work such as the decorative wood elements at portico, and the decorative wood gable panel with gable drop.

District Contextual Value

- Its architectural style, its materiality and its scale contribute to the cohesiveness of the neighbourhood's built form.
- It supports the residential character of the long north-south streets.

District Historic/Associative Value

- Its narrow lot and its construction as part of a pair of properties reflect the development of the district by small scale builders who built out short stretches of houses.

District Social/Community Value (when applicable)

APPENDIX D - Statements of Contribution

Address 132 SEATON ST

Period pre - 1873

Type Abutting

Architectural Style(s) Italianate

Storeys 2.5

Character Area Residential Area

Materials Brick exterior cladding, decorative
woodwork, and asphalt shingle roofing



Statement of Contribution

This Italianate property was built as part of a pair of houses (132-134). It is a representative example of the Italianate style. It contributes to the physical integrity of the district through its residential character, original architectural details and design characteristics.

District Design/Physical Value

- Its 2 ½ storey façade and front setback contribute to the low rise predominant scale of the district and to a well defined and articulated streetwall.
- Its Italianate style is evidenced by the protruding front gable bay; segmental arch windows at first and second storey, and the round arch window at front gable. Its style is also supported by architectural detailing such as the soldier brick voussoirs. The style is also supported by the surviving wood work such as the wood cornice with dentils between first and second storey, wood keystones with pentagon detail and round inset, wood sills, paired wood brackets with wood banding under roof eave, and the decorative wood fascia at front gable.

District Contextual Value

- Its architectural style, its materiality and its scale contribute to the cohesiveness of the neighbourhood's built form.
- It supports the residential character of the long north-south streets.

District Historic/Associative Value

- Its narrow lot and its construction as part of a pair of properties reflect the development of the district by small scale builders who built out short stretches of houses.

District Social/Community Value (when applicable)

APPENDIX D - Statements of Contribution

Address 133 SEATON ST

Period pre - 1878

Type Row

Architectural Style(s) Georgian Revival

Storeys 2.5

Character Area Residential Area

Materials Brick exterior cladding, decorative
woodwork, and asphalt shingle roofing



Statement of Contribution

This property was built as part of a group of three row houses (133-137) in the Georgian Revival style. It contributes to the physical integrity of the district through its residential character, original architectural details and design characteristics.

District Design/Physical Value

- Its 2 ½ storey façade contributes to the low rise predominant scale of the district.
- Its fine grain built form with a slightly raised entrance and setback from the street, with a front yard contributes to a well defined and articulated streetwall.
- Its Georgian Revival style is evidenced by the segmental arch windows at first and second storey, segmental arch stained glass transom window above front door, and the flat headed dormer window in wood casing with pediment. The style is also supported by the brick cross and dogtooth banding under the roof eave, soldier brick voussoirs, and stone sills.

District Contextual Value

- Its architectural style, its materiality and its scale contribute to the cohesiveness of the neighbourhood's built form.
- It supports the residential character of the long north-south streets.

District Historic/Associative Value

- Its narrow lot and its construction as part of a series of properties reflect the development of the district by small scale builders who built out short stretches of houses.

District Social/Community Value (when applicable)

APPENDIX D - Statements of Contribution

Address 134 SEATON ST

Period pre - 1873

Type Abutting

Architectural Style(s) Italianate

Storeys 2.5

Character Area Residential Area

Materials Brick exterior cladding, decorative
woodwork, and asphalt shingle roofing



Statement of Contribution

This Italianate property was built as part of a pair of houses (132-134). It is a representative example of the Italianate style. It contributes to the physical integrity of the district through its residential character, original architectural details and design characteristics.

District Design/Physical Value

- Its 2 ½ storey façade contributes to the low rise predominant scale of the district.
- Its fine grain built form with a slightly raised entrance and setback from the street, with a front yard contributes to a well defined and articulated streetwall.
- Its Italianate style is evidenced by the protruding front gable bay; segmental arch windows at first and second storey with keystones; and the round arch window at front gable with keystone. Its style is also supported by architectural detailing such as the brick lintel and sill courses, and the soldier brick voussoirs; and its surviving wood work such as the wood cornice with dentils between first and second storey, paired wood brackets with wood banding under roof eave, and the decorative wood fascia at front gable.

District Contextual Value

- Its architectural style, its materiality and its scale contribute to the cohesiveness of the neighbourhood's built form.
- It supports the residential character of the long north-south streets.

District Historic/Associative Value

- Its narrow lot and its construction as part of a pair of properties reflect the development of the district by small scale builders who built out short stretches of houses.

District Social/Community Value (when applicable)

APPENDIX D - Statements of Contribution

Address 135 SEATON ST

Period pre - 1878

Type Row

Architectural Style(s) Georgian Revival

Storeys 2.5

Character Area Residential Area

Materials Brick exterior cladding, decorative
woodwork, and asphalt shingle roofing



Statement of Contribution

This property was built as part of a group of three row houses (133-137) in the Georgian Revival style. It contributes to the physical integrity of the district through its residential character, original architectural details and design characteristics.

District Design/Physical Value

- Its 2 ½ storey façade contributes to the low rise predominant scale of the district.
- Its fine grain built form with a slightly raised entrance and setback from the street, with a front yard contributes to a well defined and articulated streetwall.
- Its Georgian Revival style is evidenced by the segmental arch windows at first and second storey, segmental arch stained glass transom window above front door, and the flat headed dormer window in wood casing with pediment. The style is also supported by the brick cross and dogtooth banding under the roof eave, soldier brick voussoirs; and stone sills.

District Contextual Value

- Its architectural style, its materiality and its scale contribute to the cohesiveness of the neighbourhood's built form.
- It supports the residential character of the long north-south streets.

District Historic/Associative Value

- Its narrow lot and its construction as part of a series of properties reflect the development of the district by small scale builders who built out short stretches of houses.

District Social/Community Value (when applicable)

APPENDIX D - Statements of Contribution

Address 136 SEATON ST

Period 1860

Type Row

Architectural Style(s) Georgian Revival

Storeys 2

Character Area Residential Area

Materials Stucco exterior cladding, decorative
woodwork, and wood shingle roofing



Statement of Contribution

Built by William Hall in 1860 as part of a group of three row houses (136-140). This property is an example of the pattern of development in the mid-19th century, whereby builders would construct series of homes in the area, often designing and customizing the plans themselves. The building is a representative example of the Georgian Revival style. It contributes to the physical integrity of the district through its residential character, original architectural details and design characteristics.

District Design/Physical Value

- Its 2 storey façade and front setback contribute to the low rise predominant scale of the district and to a well defined and articulated streetwall.
- Its Georgian Revival style is evidenced by the low pitched roof with cedar shingles; symmetrical façade; and architectural detailing including the wood entrance casing and pilasters, and cornice with modillions. The style is also supported by the use of brick, with decorative woodwork.

District Contextual Value

- Its architectural style, its materiality and its scale contribute to the cohesiveness of the neighbourhood's built form.
- It supports the residential character of the long north-south streets.

District Historic/Associative Value

- Its narrow lot reflects the subdivision and development of the district by small scale builders.
- Its siting adjacent to 138 and 140 Seaton Street, which were built by the same builder and who is credited for the construction of other properties within the district.

District Social/Community Value (when applicable)

APPENDIX D - Statements of Contribution

Address 137 SEATON ST

Period pre - 1878

Type Row

Architectural Style(s) Georgian Revival

Storeys 2.5

Character Area Residential Area

Materials Brick exterior cladding, decorative
woodwork, and asphalt shingle roofing



Statement of Contribution

This property was built as part of a group of three row houses (133-137) in the Georgian Revival style. It contributes to the physical integrity of the district through its residential character, original architectural details and design characteristics.

District Design/Physical Value

- Its 2 ½ storey façade contributes to the low rise predominant scale of the district.
- Its fine grain built form with a slightly raised entrance and setback from the street, with a front yard contributes to a well defined and articulated streetwall.
- Its Georgian Revival style is evidenced by the segmental arch windows at first and second storey, segmental arch stained glass transom window above front door, and the flat headed dormer window in wood casing with pediment. The style is also supported by the brick cross and dogtooth banding under the roof eave, soldier brick voussoirs; and stone sills.

District Contextual Value

- Its architectural style, its materiality and its scale contribute to the cohesiveness of the neighbourhood's built form.
- It supports the residential character of the long north-south streets.

District Historic/Associative Value

- Its narrow lot and its construction as part of a series of properties reflect the development of the district by small scale builders who built out short stretches of houses.

District Social/Community Value (when applicable)

APPENDIX D - Statements of Contribution

Address 138 SEATON ST

Period 1860

Type Row

Architectural Style(s) Georgian Revival

Storeys 2

Character Area Residential Area

Materials Stucco exterior cladding, decorative
woodwork, and wood shingle roofing



Statement of Contribution

Built by William Hall in 1860 as part of a group of three row houses (136-140). This property is an example of the pattern of development in the mid-19th century, whereby builders would construct series of homes in the area, often designing and customizing the plans themselves. The building is a representative example of the Georgian Revival style. It contributes to the physical integrity of the district through its residential character, original architectural details and design characteristics.

District Design/Physical Value

- Its 2 storey façade and front setback contribute to the low rise predominant scale of the district and to a well defined and articulated streetwall.
- Its Georgian Revival style is evidenced by the low pitched roof with cedar shingles; symmetrical façade; and architectural detailing including the wood entrance casing and pilasters, and cornice with modillions. The style is also supported by the use of brick, with decorative woodwork.

District Contextual Value

- Its architectural style, its materiality and its scale contribute to the cohesiveness of the neighbourhood's built form.
- It supports the residential character of the long north-south streets.

District Historic/Associative Value

- Its narrow lot reflects the subdivision and development of the district by small scale builders.
- Its siting adjacent to 136 and 140 Seaton Street, which were built by the same builder and who is credited for the construction of other properties within the district.

District Social/Community Value (when applicable)

APPENDIX D - Statements of Contribution

Address 139 SEATON ST

Period pre - 1894

Type Row

Architectural Style(s) Queen Anne Revival

Storeys 3

Character Area Residential Area

Materials Brick and stone exterior cladding, decorative woodwork, and asphalt shingle roofing



Statement of Contribution

This residential property was built as part of a series of six row houses (139-149). It is a representative example of the Queen Anne Revival style. It contributes to the physical integrity of the district through its residential character, original architectural details and design characteristics.

District Design/Physical Value

- Its 3 storey façade contributes to the low rise predominant scale of the district.
- Its fine grain built form with a slightly raised entrance and setback from the street, with a front yard contributes to a well defined and articulated streetwall.
- Its Queen Anne Revival style is evidenced by the two bay façade; round arch openings at first storey, flat headed transom window over front door, segmental arch window at second storey and the flat headed windows at front gable and dormer. The style is also supported by its architectural detailing such as the soldier brick voussoirs, dogtooth brick course above first storey; and the decorative woodwork such as the running trim at front gable.

District Contextual Value

- Its architectural style, its materiality and its scale contribute to the cohesiveness of the neighbourhood's built form.
- It supports the residential character of the long north-south streets.

District Historic/Associative Value

- Its narrow lot and its construction as part of a series of properties reflect the development of the district by small scale builders who built out short stretches of houses.

District Social/Community Value (when applicable)

APPENDIX D - Statements of Contribution

Address 140 SEATON ST

Period 1860

Type Row

Architectural Style(s) Georgian Revival

Storeys 2

Character Area Residential Area

Materials Stucco exterior cladding, decorative
woodwork, and wood shingle roofing



Statement of Contribution

Built by William Hall in 1860 as part of a group of three row houses (136-140). This property is an example of the pattern of development in the mid-19th century, whereby builders would construct series of homes in the area, often designing and customizing the plans themselves. The building is a representative example of the Georgian Revival style. It contributes to the physical integrity of the district through its residential character, original architectural details and design characteristics.

District Design/Physical Value

- Its 2 storey façade and front setback contribute to the low rise predominant scale of the district and to a well defined and articulated streetwall.
- Its Georgian Revival style is evidenced by the low pitched roof with cedar shingles; symmetrical façade; and architectural detailing including the wood entrance casing and pilasters, and cornice with modillions. The style is also supported by the use of brick, with decorative woodwork.

District Contextual Value

- Its architectural style, its materiality and its scale contribute to the cohesiveness of the neighbourhood's built form.
- It supports the residential character of the long north -south streets.

District Historic/Associative Value

- Its narrow lot, reflective the subdivision and development of the district by small scale builders.
- Its siting adjacent to 136 and 138 Seaton Street, which were built by the same builder and who is credited for the construction of other properties within the district.

District Social/Community Value (when applicable)

APPENDIX D - Statements of Contribution

Address 141 SEATON ST

Period pre - 1894

Type Row

Architectural Style(s) Queen Anne Revival

Storeys 3

Character Area Residential Area

Materials Brick and stone exterior cladding, decorative woodwork, and asphalt shingle roofing



Statement of Contribution

This residential property was built as part of a series of six row houses (139-149). It is a representative example of the Queen Anne Revival style. It contributes to the physical integrity of the district through its residential character, original architectural details and design characteristics.

District Design/Physical Value

- Its 3 storey façade contributes to the low rise predominant scale of the district.
- Its fine grain built form with a slightly raised entrance and setback from the street, with a front yard contributes to a well defined and articulated streetwall.
- Its Queen Anne Revival style is evidenced by the two bay façade; round arch openings at first storey, flat headed transom window over front door, segmental arch window at second storey and the flat headed windows at front gable and dormer. The style is also supported by its architectural detailing such as the soldier brick voussoirs, dogtooth brick course above first storey; and its decorative woodwork such as the running trim at front gable.

District Contextual Value

- Its architectural style, its materiality and its scale contribute to the cohesiveness of the neighbourhood's built form.
- It supports the residential character of the long north-south streets.

District Historic/Associative Value

- Its narrow lot and its construction as part of a series of properties reflect the development of the district by small scale builders who built out short stretches of houses.

District Social/Community Value (when applicable)

APPENDIX D - Statements of Contribution

Address 142 SEATON ST

Period pre - 1884

Type Detached

Architectural Style(s) Victorian/Romanesque Revival

Storeys 2.5

Character Area Residential Area

Materials Brick exterior cladding, decorative
woodwork, and asphalt shingle roofing



Statement of Contribution

This property was built as a detached house, drawing from both Victorian and Romanesque Revival styles. It contributes to the physical integrity of the district through its residential character, original architectural details and design characteristics.

District Design/Physical Value

- Its 2 ½ storey façade contributes to the low rise predominant scale of the district.
- Its fine grain built form with a slightly raised entrance and setback from the street, with a front yard contributes to a well defined and articulated streetwall.
- Its combination of Victorian and Romanesque Revival styles is evidenced by the protruding front gable bay; the three centred arch opening at first storey, round arch transom window above front door, and the round arch windows with stained glass at second storey. Its style is also supported by architectural detailing such as the brick sill course, brick voussoirs, and stone lintels; and its surviving decorative woodwork such as the decorative running trim at front gable.

District Contextual Value

- Its architectural style, its materiality and its scale contribute to the cohesiveness of the neighbourhood's built form.
- It supports the residential character of the long north-south streets.

District Historic/Associative Value

- Its narrow lot reflects the subdivision and development of the district by small scale builders.

District Social/Community Value (when applicable)

APPENDIX D - Statements of Contribution

Address 143 SEATON ST

Period pre - 1894

Type Row

Architectural Style(s) Queen Anne Revival

Storeys 3

Character Area Residential Area

Materials Brick and stone exterior cladding, decorative woodwork, and asphalt shingle roofing



Statement of Contribution

This residential property was built as part of a series of six row houses (139-149). It is a representative example of the Queen Anne Revival style. It contributes to the physical integrity of the district through its residential character, original architectural details and design characteristics.

District Design/Physical Value

- Its 3 storey façade contributes to the low rise predominant scale of the district.
- Its fine grain built form with a slightly raised entrance and setback from the street, with a front yard contributes to a well defined and articulated streetwall.
- Its Queen Anne Revival style is evidenced by the two bay façade; round arch openings at first storey, flat headed transom window over front door, segmental arch window at second storey and the flat headed windows at front gable and dormer. The style is also supported by its architectural detailing such as the soldier brick voussoirs; and its decorative woodwork such as the running trim at front gable.

District Contextual Value

- Its architectural style, its materiality and its scale contribute to the cohesiveness of the neighbourhood's built form.
- It supports the residential character of the long north-south streets.

District Historic/Associative Value

- Its narrow lot and its construction as part of a series of properties reflect the development of the district by small scale builders who built out short stretches of houses.

District Social/Community Value (when applicable)

APPENDIX D - Statements of Contribution

Address 145 SEATON ST

Period pre - 1894

Type Row

Architectural Style(s) Queen Anne Revival

Storeys 3

Character Area Residential Area

Materials Brick and stone exterior cladding, decorative woodwork, and asphalt shingle roofing



Statement of Contribution

This residential property was built as part of a series of six row houses (139-149). It is a representative example of the Queen Anne Revival style. It contributes to the physical integrity of the district through its residential character, original architectural details and design characteristics.

District Design/Physical Value

- Its 3 storey façade contributes to the low rise predominant scale of the district.
- Its fine grain built form with a slightly raised entrance and setback from the street, with a front yard contributes to a well defined and articulated streetwall.
- Its Queen Anne Revival style is evidenced by the two bay façade; round arch openings at first storey, flat headed transom window over front door, segmental arch window at second storey and the flat headed windows at front gable and dormer. The style is also supported by its architectural detailing such as the soldier brick voussoirs, wood cornice with modillions under roof eave, and porch eave.

District Contextual Value

- Its architectural style, its materiality and its scale contribute to the cohesiveness of the neighbourhood's built form.
- It supports the residential character of the long north-south streets.

District Historic/Associative Value

- Its narrow lot and its construction as part of a series of properties reflect the development of the district by small scale builders who built out short stretches of houses.

District Social/Community Value (when applicable)

APPENDIX D - Statements of Contribution

Address 147 SEATON ST

Period pre - 1894

Type Row

Architectural Style(s) Queen Anne Revival

Storeys 3

Character Area Residential Area

Materials Brick and stone exterior cladding, decorative woodwork, and asphalt shingle roofing



Statement of Contribution

This residential property was built as part of a series of six row houses (139-149). It is a representative example of the Queen Anne Revival style. It contributes to the physical integrity of the district through its residential character, original architectural details and design characteristics.

District Design/Physical Value

- Its 3 storey façade contributes to the low rise predominant scale of the district.
- Its fine grain built form with a slightly raised entrance and setback from the street, with a front yard contributes to a well defined and articulated streetwall.
- Its Queen Anne Revival style is evidenced by the two bay façade; round arch openings at first storey, flat headed transom window over front door, segmental arch window at second storey and the flat headed windows at front gable and dormer. The style is also supported by its architectural detailing such as the soldier brick voussoirs, wood cornice with modillions under roof eave, and porch eave.

District Contextual Value

- Its architectural style, its materiality and its scale contribute to the cohesiveness of the neighbourhood's built form.
- It supports the residential character of the long north-south streets.

District Historic/Associative Value

- Its narrow lot and its construction as part of a series of properties reflect the development of the district by small scale builders who built out short stretches of houses.

District Social/Community Value (when applicable)

APPENDIX D - Statements of Contribution

Address 149 SEATON ST

Period pre - 1894

Type Row

Architectural Style(s) Queen Anne Revival

Storeys 3

Character Area Residential Area

Materials Brick and stone exterior cladding, decorative woodwork, and asphalt shingle roofing



Statement of Contribution

This residential property was built as part of a series of six row houses (139-149). It is a representative example of the Queen Anne Revival style. It contributes to the physical integrity of the district through its residential character, original architectural details and design characteristics.

District Design/Physical Value

- Its 3 storey façade contributes to the low rise predominant scale of the district.
- Its fine grain built form with a slightly raised entrance and setback from the street, with a front yard contributes to a well defined and articulated streetwall.
- Its Queen Anne Revival style is evidenced by the two bay façade; round arch openings at first storey, flat headed transom window over front door, segmental arch window at second storey and the flat headed windows at front gable and dormer. The style is also supported by its architectural detailing such as the soldier brick voussoirs, wood cornice with modillions under roof eave, and porch eave.

District Contextual Value

- Its architectural style, its materiality and its scale contribute to the cohesiveness of the neighbourhood's built form.
- It supports the residential character of the long north-south streets.

District Historic/Associative Value

- Its narrow lot and its construction as part of a series of properties reflect the development of the district by small scale builders who built out short stretches of houses.

District Social/Community Value (when applicable)

APPENDIX D - Statements of Contribution

Address 167 SEATON ST

Period pre - 1889

Type Row

Architectural Style(s) Victorian

Storeys 2.5

Character Area Residential Area

Materials Brick exterior cladding, decorative
woodwork, and asphalt shingle roofing



Statement of Contribution

This residential property was built as part of an ensemble of eight row houses (167-181) in the Victorian style. It contributes to the physical integrity of the district through its residential character, original architectural details and design characteristics.

District Design/Physical Value

- Its 2 ½ storey façade contributes to the low rise predominant scale of the district.
- Its fine grain built form with a slightly raised entrance and setback from the street, with a front yard contributes to a well defined and articulated streetwall.
- Its Victorian style is evidenced by the cross gabled roof; dogtooth brick insets under second storey bay windows, basket weave banding over front door; brick lintel course at first and second storey, soldier brick voussoirs; segmental pointed arch openings at first storey and segmental arch openings at second storey, segmental pointed arch stained glass transom window above front door, flat headed window at front gable; and its surviving wood work such as the triangular wood panels at front gable.

District Contextual Value

- Its architectural style, its materiality and its scale contribute to the cohesiveness of the neighbourhood's built form.
- It supports the residential character of the long north-south streets.

District Historic/Associative Value

- Its narrow lot and its construction as part of a series of properties reflect the development of the district by small scale builders who built out short stretches of houses.

District Social/Community Value (when applicable)

APPENDIX D - Statements of Contribution

Address 169 SEATON ST

Period pre - 1889

Type Row

Architectural Style(s) Victorian

Storeys 2.5

Character Area Residential Area

Materials Brick exterior cladding, decorative
woodwork, and asphalt shingle roofing



Statement of Contribution

This residential property was built as part of an ensemble of eight row houses (167-181) in the Victorian style. It contributes to the physical integrity of the district through its residential character, original architectural details and design characteristics.

District Design/Physical Value

- Its 2 ½ storey façade contributes to the low rise predominant scale of the district.
- Its fine grain built form with a slightly raised entrance and setback from the street, with a front yard contributes to a well defined and articulated streetwall.
- Its Victorian style is evidenced by the cross gabled roof; dogtooth brick insets under second storey bay windows, basket weave banding over front door; brick lintel course at first and second storey, soldier brick voussoirs; segmental pointed arch openings at first storey and segmental arch openings at second storey, segmental pointed arch stained glass transom window above front door, triangular window at front gable. The style is also supported by the surviving wood work such as the wood cornice with brackets under second storey balcony and triangular window at front gable.

District Contextual Value

- Its architectural style, its materiality and its scale contribute to the cohesiveness of the neighbourhood's built form.
- It supports the residential character of the long north-south streets.

District Historic/Associative Value

- Its narrow lot and its construction as part of a series of properties reflect the development of the district by small scale builders who built out short stretches of houses.

District Social/Community Value (when applicable)

APPENDIX D - Statements of Contribution

Address 171 SEATON ST

Period pre - 1889

Type Row

Architectural Style(s) Victorian

Storeys 2.5

Character Area Residential Area

Materials Brick exterior cladding, decorative
woodwork, and asphalt shingle roofing



Statement of Contribution

This residential property was built as part of an ensemble of eight row houses (167-181) in the Victorian style. It contributes to the physical integrity of the district through its residential character, original architectural details and design characteristics.

District Design/Physical Value

- Its 2 ½ storey façade contributes to the low rise predominant scale of the district.
- Its fine grain built form with a slightly raised entrance and setback from the street, with a front yard contributes to a well defined and articulated streetwall.
- Its Victorian style is evidenced by the cross gabled roof; dogtooth brick insets under second storey bay windows, basket weave banding over front door; brick lintel course at first and second storey, soldier brick voussoirs; segmental pointed arch openings at first storey and segmental arch openings at second storey, segmental pointed arch stained glass transom window above front door, flat headed window at front gable. The style is also supported by the surviving wood work such as the flat headed window at front gable in protruding wood casing and triangular wood panels at front gable.

District Contextual Value

- Its architectural style, its materiality and its scale contribute to the cohesiveness of the neighbourhood's built form.
- It supports the residential character of the long north-south streets.

District Historic/Associative Value

- Its narrow lot and its construction as part of a series of properties reflect the development of the district by small scale builders who built out short stretches of houses.

District Social/Community Value (when applicable)

APPENDIX D - Statements of Contribution

Address 173 SEATON ST

Period pre - 1889

Type Row

Architectural Style(s) Victorian

Storeys 2.5

Character Area Residential Area

Materials Brick exterior cladding, decorative
woodwork, and asphalt shingle roofing



Statement of Contribution

This residential property was built as part of an ensemble of eight row houses (167-181) in the Victorian style. It contributes to the physical integrity of the district through its residential character, original architectural details and design characteristics.

District Design/Physical Value

- Its 2 ½ storey façade contributes to the low rise predominant scale of the district.
- Its fine grain built form with a slightly raised entrance and setback from the street, with a front yard contributes to a well defined and articulated streetwall.
- Its Victorian style is evidenced by the cross gabled roof; basket weave banding over front door; brick lintel course at first and second storey, soldier brick voussoirs; segmental pointed arch openings at first storey and segmental arch openings at second storey, segmental pointed arch stained glass transom window above front door, flat headed windows at front gable. The style is also supported by the surviving wood work such as the triangular gable panel, wood cornice with brackets under second storey and roof eave.

District Contextual Value

- Its architectural style, its materiality and its scale contribute to the cohesiveness of the neighbourhood's built form.
- It supports the residential character of the long north-south streets.

District Historic/Associative Value

- Its narrow lot and its construction as part of a series of properties reflect the development of the district by small scale builders who built out short stretches of houses.

District Social/Community Value (when applicable)

APPENDIX D - Statements of Contribution

Address 175 SEATON ST

Period pre - 1889

Type Row

Architectural Style(s) Victorian

Storeys 2.5

Character Area Residential Area

Materials Brick exterior cladding, decorative
woodwork, and asphalt shingle roofing



Statement of Contribution

This residential property was built as part of an ensemble of eight row houses (167-181) in the Victorian style. It contributes to the physical integrity of the district through its residential character, original architectural details and design characteristics.

District Design/Physical Value

- Its 2 ½ storey façade contributes to the low rise predominant scale of the district.
- Its fine grain built form with a slightly raised entrance and setback from the street, with a front yard contributes to a well defined and articulated streetwall.
- Its Victorian style is evidenced by the cross gabled roof; basket weave banding over front door; brick lintel course at first and second storey, soldier brick voussoirs; segmental pointed arch openings at first storey and segmental arch openings at second storey, segmental pointed arch stained glass transom window above front door, flat headed windows at front gable. The style is also supported by the surviving wood work such as the triangular gable panel, wood cornice with brackets under second storey and roof eave.

District Contextual Value

- Its architectural style, its materiality and its scale contribute to the cohesiveness of the neighbourhood's built form.
- It supports the residential character of the long north-south streets.

District Historic/Associative Value

- Its narrow lot and its construction as part of a series of properties reflect the development of the district by small scale builders who built out short stretches of houses.

District Social/Community Value (when applicable)

APPENDIX D - Statements of Contribution

Address 177 SEATON ST

Period pre - 1889

Type Row

Architectural Style(s) Victorian

Storeys 2.5

Character Area Residential Area

Materials Brick exterior cladding, decorative
woodwork, and asphalt shingle roofing



Statement of Contribution

This residential property was built as part of an ensemble of eight row houses (167-181) in the Victorian style. It contributes to the physical integrity of the district through its residential character, original architectural details and design characteristics.

District Design/Physical Value

- Its 2 ½ storey façade contributes to the low rise predominant scale of the district.
- Its fine grain built form with a slightly raised entrance and setback from the street, with a front yard contributes to a well defined and articulated streetwall.
- Its Victorian style is evidenced by the cross gabled roof; dogtooth brick insets under second storey bay windows, basket weave banding over front door; brick lintel course at first and second storey, soldier brick voussoirs; segmental pointed arch openings at first storey and segmental arch openings at second storey, segmental pointed arch stained glass transom window above front door, flat headed window at front gable. The style is also supported by the surviving wood work such as the flat headed windows at front gable in protruding wood casing and triangular wood panels at front gable.

District Contextual Value

- Its architectural style, its materiality and its scale contribute to the cohesiveness of the neighbourhood's built form.
- It supports the residential character of the long north-south streets.

District Historic/Associative Value

- Its narrow lot and its construction as part of a series of properties reflect the development of the district by small scale builders who built out short stretches of houses.

District Social/Community Value (when applicable)

APPENDIX D - Statements of Contribution

Address 179 SEATON ST

Period pre - 1889

Type Row

Architectural Style(s) Victorian

Storeys 2.5

Character Area Residential Area

Materials Brick exterior cladding, decorative
woodwork, and asphalt shingle roofing



Statement of Contribution

This residential property was built as part of an ensemble of eight row houses (167-181) in the Victorian style. It contributes to the physical integrity of the district through its residential character, original architectural details and design characteristics.

District Design/Physical Value

- Its 2 ½ storey façade contributes to the low rise predominant scale of the district.
- Its fine grain built form with a slightly raised entrance and setback from the street, with a front yard contributes to a well defined and articulated streetwall.
- Its Victorian style is evidenced by the cross gabled roof; basket weave banding over front door; brick lintel course at first and second storey, soldier brick voussoirs; segmental pointed arch openings at first storey and segmental arch openings at second storey, segmental pointed arch stained glass transom window above front door, flat headed window at front gable. The style is also supported by the decorative wood work such as the wood cornice with brackets under second storey and roof eave and the half timbering wood detail at front gable.

District Contextual Value

- Its architectural style, its materiality and its scale contribute to the cohesiveness of the neighbourhood's built form.
- It supports the residential character of the long north-south streets.

District Historic/Associative Value

- Its narrow lot and its construction as part of a series of properties reflect the development of the district by small scale builders who built out short stretches of houses.

District Social/Community Value (when applicable)

APPENDIX D - Statements of Contribution

Address 180 SEATON ST

Period pre - 1879

Type Detached

Architectural Style(s) Victorian

Storeys 2

Character Area Residential Area

Materials Brick exterior cladding, decorative
woodwork, and asphalt shingle roofing



Statement of Contribution

This detached residential property was built in the Victorian style. It contributes to the physical integrity of the district through its residential character, original architectural details and design characteristics.

District Design/Physical Value

- Its 2 storey façade contributes to the low rise predominant scale of the district.
- Its fine grain built form with a slightly raised entrance and setback from the street, with a front yard contributes to a well defined and articulated streetwall.
- Its Victorian style is evidenced by the flat headed windows; including those in wood casing at second storey, the front porch with columns, architrave with dentils and wood ornamented pediment, as well as the triangular wood gable panel with gable drops.

District Contextual Value

- Its architectural style, its materiality and its scale contribute to the cohesiveness of the neighbourhood's built form.
- It supports the residential character of the long north-south streets.

District Historic/Associative Value

- Its narrow lot reflects the subdivision and development of the district by small scale builders.

District Social/Community Value (when applicable)

APPENDIX D - Statements of Contribution

Address 181 SEATON ST

Period pre - 1889

Type Row

Architectural Style(s) Victorian

Storeys 2.5

Character Area Residential Area

Materials Brick exterior cladding, decorative
woodwork, and asphalt shingle roofing



Statement of Contribution

This residential property was built as part of an ensemble of eight row houses (167-181) in the Victorian style. It contributes to the physical integrity of the district through its residential character, original architectural details and design characteristics.

District Design/Physical Value

- Its 2 ½ storey façade contributes to the low rise predominant scale of the district.
- Its fine grain built form with a slightly raised entrance and setback from the street, with a front yard contributes to a well defined and articulated streetwall.
- Its Victorian style is evidenced by the cross gabled roof; dogtooth brick insets under second storey bay windows, basket weave banding over front door; brick lintel course at first and second storey, soldier brick voussoirs; segmental pointed arch openings at first storey and segmental arch openings at second storey, segmental pointed arch stained glass transom window above front door, flat headed window at front gable. The style is also supported by the decorative wood work such as the triangular wood panels and gable panel at front gable.

District Contextual Value

- Its architectural style, its materiality and its scale contribute to the cohesiveness of the neighbourhood's built form.
- It supports the residential character of the long north-south streets.

District Historic/Associative Value

- Its narrow lot and its construction as part of a series of properties reflect the development of the district by small scale builders who built out short stretches of houses.

District Social/Community Value (when applicable)

APPENDIX D - Statements of Contribution

Address 182 SEATON ST

Period pre - 1879

Type Abutting

Architectural Style(s) Victorian

Storeys 2

Character Area Residential Area

Materials Brick exterior cladding, decorative
woodwork, and asphalt shingle roofing



Statement of Contribution

This detached residential property was built in the Victorian style. It contributes to the physical integrity of the district through its residential character, original architectural details and design characteristics.

District Design/Physical Value

- Its 2 storey façade contributes to the low rise predominant scale of the district.
- Its fine grain built form with a slightly raised entrance and setback from the street, with a front yard contributes to a well defined and articulated streetwall.
- Its Victorian style is evidenced by the cross gabled roof front gable; protruding bay window at first storey; its yellow brick with soldier brick voussoirs; the segmental arch windows including stained glass transom window above front door and the decorative wood elements at front gable.

District Contextual Value

- Its architectural style, its materiality and its scale contribute to the cohesiveness of the neighbourhood's built form.
- It supports the residential character of the long north-south streets.

District Historic/Associative Value

- Its narrow lot reflects the subdivision and development of the district by small scale builders.

District Social/Community Value (when applicable)

APPENDIX D - Statements of Contribution

Address 183 SEATON ST

Period pre - 1913

Type Row

Architectural Style(s) Queen Anne Revival

Storeys 3

Character Area Residential Area

Materials Brick exterior cladding, decorative
woodwork, and asphalt shingle roofing



Statement of Contribution

This property is part of an ensemble of four row houses (183-189) built in the Queen Anne Revival style. It contributes to the physical integrity of the district through its residential character, original architectural details and design characteristics.

District Design/Physical Value

- Its 3 storey façade contributes to the low rise predominant scale of the district.
- Its fine grain built form with a slightly raised entrance and setback from the street, with a front yard contributes to a well defined and articulated streetwall.
- Its Queen Anne Revival style is evidenced by the stone lintel and sill courses at first storey, stone sill course at second floor, brick lintel course at second storey, brick pier at side with corbelling; flat headed window at first storey, flat headed transom window above front door, flat headed bay windows in wood casing at second storey, flat headed dormer windows; and wood cornice with dentils at dormer.

District Contextual Value

- Its architectural style, its materiality and its scale contribute to the cohesiveness of the neighbourhood's built form.
- It supports the residential character of the long north-south streets.

District Historic/Associative Value

- Its narrow lot and its construction as part of a series of properties reflect the development of the district by small scale builders who built out short stretches of houses.

District Social/Community Value (when applicable)

APPENDIX D - Statements of Contribution

Address 184 SEATON ST

Period pre - 1913

Type Row

Architectural Style(s) Edwardian

Storeys 3

Character Area Residential Area

Materials stucco exterior cladding and metal shingle roofing



Statement of Contribution

This property was built as part of a series of four row houses (184-188A) in the Edwardian style, based on an alternating version of the same model. It contributes to the physical integrity of the district through its residential character, original architectural details and design characteristics.

District Design/Physical Value

- Its 3 storey façade and front setback contribute to the low rise predominant scale of the district and to a well defined and articulated streetwall.
- Its Edwardian style is evidenced by the cross gabled roof with broad triangular dormer.

District Contextual Value

- Its architectural style and its scale contribute to the cohesiveness of the neighbourhood's built form.
- It supports the residential character of the long north-south streets.

District Historic/Associative Value

- Its narrow lot and its construction as part of a series of properties reflect the development of the district by small scale builders who built out short stretches of houses.

District Social/Community Value (when applicable)

APPENDIX D - Statements of Contribution

Address 185 SEATON ST

Period pre - 1913

Type Row

Architectural Style(s) Queen Anne Revival

Storeys 3

Character Area Residential Area

Materials Brick and wood exterior cladding, decorative woodwork, and asphalt shingle roofing



Statement of Contribution

This property is part of an ensemble of four row houses (183-189) built in the Queen Anne Revival style. It contributes to the physical integrity of the district through its residential character, original architectural details and design characteristics.

District Design/Physical Value

- Its 3 storey façade contributes to the low rise predominant scale of the district.
- Its fine grain built form with a slightly raised entrance and setback from the street, with a front yard contributes to a well defined and articulated streetwall.
- Its Queen Anne Revival style is evidenced by the stone lintel and sill courses at first and second storey; flat headed bay windows at first and second storey, flat headed transom window above front door, flat headed dormer windows; and simple wood fascia at front gable.

District Contextual Value

- Its architectural style, its materiality and its scale contribute to the cohesiveness of the neighbourhood's built form.
- It supports the residential character of the long north-south streets.

District Historic/Associative Value

- Its narrow lot and its construction as part of a series of properties reflect the development of the district by small scale builders who built out short stretches of houses.

District Social/Community Value (when applicable)

APPENDIX D - Statements of Contribution

| | |
|-------------------------------|---|
| Address | 186 SEATON ST |
| Period | pre - 1913 |
| Type | Row |
| Architectural Style(s) | Edwardian |
| Storeys | 3 |
| Character Area | Residential Area |
| Materials | Brick exterior cladding and asphalt shingle roofing |



Statement of Contribution

This property was built as part of a series of four row houses (184-188A) in the Edwardian style, based on an alternating version of the same model. It contributes to the physical integrity of the district through its residential character, original architectural details and design characteristics.

District Design/Physical Value

- Its 3 storey façade and front setback contribute to the low rise predominant scale of the district and to a well defined and articulated streetwall.
- Its Edwardian style is evidenced by the cross gabled roof with broad triangular dormer; the segmental arch window with brick voussoir at the first storey and the oriel with paneling and enrichments at second storey.

District Contextual Value

- Its architectural style, its materiality and its scale contribute to the cohesiveness of the neighbourhood's built form.
- It supports the residential character of the long north-south streets.

District Historic/Associative Value

- Its narrow lot and its construction as part of a series of properties reflect the development of the district by small scale builders who built out short stretches of houses.

District Social/Community Value (when applicable)

APPENDIX D - Statements of Contribution

Address 187 SEATON ST

Period pre - 1913

Type Row

Architectural Style(s) Queen Anne Revival

Storeys 3

Character Area Residential Area

Materials Brick exterior cladding, decorative
woodwork, and asphalt shingle roofing



Statement of Contribution

This property is part of an ensemble of four row houses (183-189) built in the Queen Anne Revival style. It contributes to the physical integrity of the district through its residential character, original architectural details and design characteristics.

District Design/Physical Value

- Its 3 storey façade contributes to the low rise predominant scale of the district.
- Its fine grain built form with a slightly raised entrance and setback from the street, with a front yard contributes to a well defined and articulated streetwall.
- Its Queen Anne Revival style is evidenced by the stone lintel and sill courses at first and second storey; flat headed bay windows at first and second storey, flat headed transom window above front door, flat headed dormer windows; and simple wood fascia at front gable.

District Contextual Value

- Its architectural style, its materiality and its scale contribute to the cohesiveness of the neighbourhood's built form.
- It supports the residential character of the long north-south streets.

District Historic/Associative Value

- Its narrow lot and its construction as part of a series of properties reflect the development of the district by small scale builders who built out short stretches of houses.

District Social/Community Value (when applicable)

APPENDIX D - Statements of Contribution

Address 188 A SEATON ST

Period pre - 1913

Type Row

Architectural Style(s) Edwardian

Storeys 3

Character Area Residential Area

Materials Brick exterior cladding, decorative
woodwork, and asphalt shingle roofing



Statement of Contribution

This property was built as part of a series of four row houses (184-188A) in the Edwardian style, based on an alternating version of the same model. It contributes to the physical integrity of the district through its residential character, original architectural details and design characteristics.

District Design/Physical Value

- Its 3 storey façade and front setback contribute to the low rise predominant scale of the district and to a well defined and articulated streetwall.
- Its Edwardian style is evidenced by the cross gabled roof with broad triangular dormer; the segmental arch window with brick voussoir at the first storey and the bay window at second storey.

District Contextual Value

- Its architectural style, its materiality and its scale contribute to the cohesiveness of the neighbourhood's built form.
- It supports the residential character of the long north-south streets.

District Historic/Associative Value

- Its narrow lot and its construction as part of a series of properties reflect the development of the district by small scale builders who built out short stretches of houses.

District Social/Community Value (when applicable)

APPENDIX D - Statements of Contribution

Address 188 SEATON ST

Period pre - 1913

Type Row

Architectural Style(s) Edwardian

Storeys 3

Character Area Residential Area

Materials Brick exterior cladding and asphalt shingle roofing



Statement of Contribution

This property was built as part of a series of four row houses (184-188A) in the Edwardian style, based on an alternating version of the same model. It contributes to the physical integrity of the district through its residential character, original architectural details and design characteristics.

District Design/Physical Value

- Its 3 storey façade and front setback contribute to the low rise predominant scale of the district and to a well defined and articulated streetwall.
- Its Edwardian style is evidenced by the cross gabled roof with broad triangular dormer; the segmental arch window with brick voussoir at the first storey and the bay window at second storey.

District Contextual Value

- Its architectural style, its materiality and its scale contribute to the cohesiveness of the neighbourhood's built form.
- It supports the residential character of the long north-south streets.

District Historic/Associative Value

- Its narrow lot and its construction as part of a series of properties reflect the development of the district by small scale builders who built out short stretches of houses.

District Social/Community Value (when applicable)

APPENDIX D - Statements of Contribution

Address 189 SEATON ST

Period pre - 1913

Type Row

Architectural Style(s) Queen Anne Revival

Storeys 3

Character Area Residential Area

Materials Brick and wood exterior cladding, decorative woodwork, and asphalt shingle roofing



Statement of Contribution

This property is part of an ensemble of four row houses (183-189) built in the Queen Anne Revival style. It contributes to the physical integrity of the district through its residential character, original architectural details and design characteristics.

District Design/Physical Value

- Its 3 storey façade contributes to the low rise predominant scale of the district.
- Its fine grain built form with a slightly raised entrance and setback from the street, with a front yard contributes to a well defined and articulated streetwall.
- Its Queen Anne Revival style is evidenced by the stone lintel and sill courses at first storey, stone sill course at second floor, brick lintel course at second storey, brick pier at side with corbelling; flat headed window at first storey, flat headed transom window above front door and flat headed dormer windows. The style is also supported by the surviving woodwork such as the flat headed bay windows in wood casing at second storey and wood cornice with dentils at dormer.

District Contextual Value

- Its architectural style, its materiality and its scale contribute to the cohesiveness of the neighbourhood's built form.
- It supports the residential character of the long north-south streets.

District Historic/Associative Value

- Its narrow lot and its construction as part of a series of properties reflect the development of the district by small scale builders who built out short stretches of houses.

District Social/Community Value (when applicable)

APPENDIX D - Statements of Contribution

Address 190 SEATON ST

Period pre - 1869

Type Abutting

Architectural Style(s) Victorian/Italianate

Storeys 2

Character Area Residential Area

Materials Brick exterior cladding, decorative
woodwork, and asphalt shingle roofing



Statement of Contribution

This residential property was built as part of a pair of houses (190-192). It blends elements of both Victorian and Italianate styles. It contributes to the physical integrity of the district through its residential character, original architectural details and design characteristics.

District Design/Physical Value

- Its 2 storey façade contributes to the low rise predominant scale of the district.
- Its fine grain built form with a slightly raised entrance and setback from the street, with a front yard contributes to a well defined and articulated streetwall.
- Its Victorian style is evidenced by the cross gabled roof with central front gable; the decorative wood gable running board and gable paneling; the soldier brick voussoirs and lintel courses that include polychrome accents.

District Contextual Value

- Its architectural style, its materiality and its scale contribute to the cohesiveness of the neighbourhood's built form.
- It supports the residential character of the long north-south streets.

District Historic/Associative Value

- Its narrow lot and its construction as part of a pair of properties reflect the development of the district by small scale builders who built out short stretches of houses.

District Social/Community Value (when applicable)

APPENDIX D - Statements of Contribution

Address 191 SEATON ST

Period pre - 1884

Type Abutting

Architectural Style(s) Victorian

Storeys 2.5

Character Area Residential Area

Materials Brick exterior cladding, decorative
woodwork and asphalt shingle roofing



Statement of Contribution

This residential building is a representative example of the Victorian architectural style. It contributes to the physical integrity of the district through its residential character, original architectural detailing and design characteristics.

District Design/Physical Value

- Its 2 ½ storey façade contributes to the low rise predominant scale of the district.
- Its fine grain built form with a slightly raised entrance and setback from the street, with a front yard contributes to a well defined and articulated streetwall.
- Its Victorian style is evidenced by the cross gable; flat headed bay windows with rounded edges at first and second storey with juliet, round arch stained glass transom window above front door, flat headed window with rounded edges at second storey with juliet, triangular window at front gable; dogtooth brick insets between first and second storey bay windows, soldier brick voussoirs and shoulders, stone lintels and stone lion head ornament above front door. The style is also supported by the surviving decorative woodwork such as the wood cornice with dentils at base of front gable and decorative wood fascia with gable panel.

District Contextual Value

- Its architectural style, its materiality and its scale contribute to the cohesiveness of the neighbourhood's built form.
- It supports the residential character of the long north-south streets.

District Historic/Associative Value

- Its narrow lot reflects the subdivision and development of the district by small scale builders.

District Social/Community Value (when applicable)

APPENDIX D - Statements of Contribution

Address 192 SEATON ST

Period pre - 1869

Type Abutting

Architectural Style(s) Victorian/Italianate

Storeys 2

Character Area Residential Area

Materials Brick exterior cladding, decorative
woodwork, and asphalt shingle roofing



Statement of Contribution

This residential property was built as part of a pair of houses (190-192). It blends elements of both Victorian and Italianate styles. It contributes to the physical integrity of the district through its residential character, original architectural details and design characteristics.

District Design/Physical Value

- Its 2 storey façade contributes to the low rise predominant scale of the district.
- Its fine grain built form with a slightly raised entrance and setback from the street, with a front yard contributes to a well defined and articulated streetwall.
- Its Victorian style is evidenced by the cross gabled roof with central front gable; the decorative wood gable running board and gable paneling; the soldier brick voussoirs and lintel courses that include polychrome accents.

District Contextual Value

- Its architectural style, its materiality and its scale contribute to the cohesiveness of the neighbourhood's built form.
- It supports the residential character of the long north-south streets.

District Historic/Associative Value

- Its narrow lot and its construction as part of a pair of properties reflect the development of the district by small scale builders who built out short stretches of houses.

District Social/Community Value (when applicable)

APPENDIX D - Statements of Contribution

Address 193 SEATON ST

Period pre - 1913

Type Row

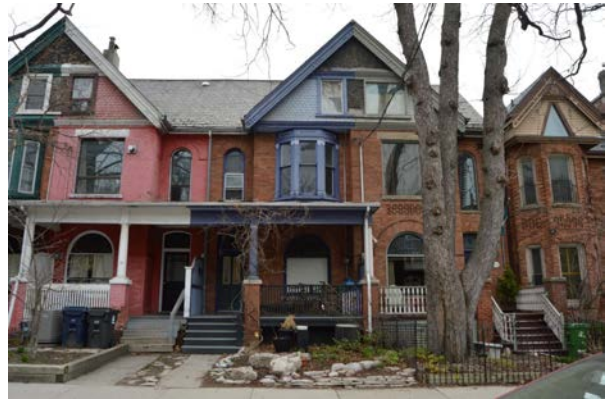
Architectural Style(s) Queen Anne Revival

Storeys 2.5

Character Area Residential Area

h

Materials Brick exterior cladding, decorative
woodwork, and asphalt shingle roofing



Statement of Contribution

This property is part of an ensemble of four row houses (193-199) built in the Queen Anne Revival style. It contributes to the physical integrity of the district through its residential character, original architectural details and design characteristics.

District Design/Physical Value

- Its 2 ½ storey façade contributes to the low rise predominant scale of the district.
- Its fine grain built form with a slightly raised entrance and setback from the street, with a front yard contributes to a well defined and articulated streetwall.
- Its Queen Anne Revival style is evidenced by the protruding front gable bay; stone gargoyle on brick post, soldier brick voussoirs, stone sills and lintels; round arch opening at first storey, flat headed window at second storey, round arch window at second storey, flat headed window at front gable. The style is also supported by the surviving decorative woodwork such as the wood cornice with dentils at base and middle of front gable and decorative wood fascia at front gable.

District Contextual Value

- Its architectural style, its materiality and its scale contribute to the cohesiveness of the neighbourhood's built form.
- It supports the residential character of the long north-south streets.

District Historic/Associative Value

- Its narrow lot and its construction as part of a series of properties reflect the development of the district by small scale builders who built out short stretches of houses.

District Social/Community Value (when applicable)

APPENDIX D - Statements of Contribution

Address 195 SEATON ST

Period pre - 1913

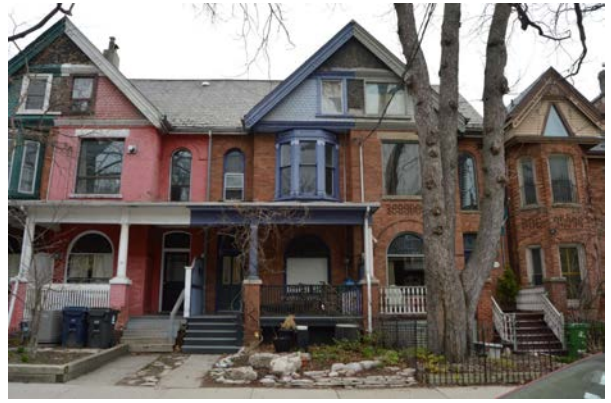
Type Row

Architectural Style(s) Queen Anne Revival

Storeys 2.5

Character Area Residential Area

Materials Brick exterior cladding, decorative
woodwork, and asphalt shingle roofing



Statement of Contribution

This property is part of an ensemble of four row houses (193-199) built in the Queen Anne Revival style. It contributes to the physical integrity of the district through its residential character, original architectural details and design characteristics.

District Design/Physical Value

- Its 2 ½ storey façade contributes to the low rise predominant scale of the district.
- Its fine grain built form with a slightly raised entrance and setback from the street, with a front yard contributes to a well defined and articulated streetwall.
- Its Queen Anne Revival style is evidenced by the protruding front gable bay; stone gargoyle on brick post, soldier brick voussoirs, stone sills and lintels; round arch opening at first storey, flat headed windows at second storey, round arch window at second storey, flat headed window at front gable. The style is also supported by the surviving woodwork such as the wood cornice with dentils at base and middle of front gable, flat headed bay windows in ornamented wood casing at second storey and decorative wood fascia at front gable.

District Contextual Value

- Its architectural style, its materiality and its scale contribute to the cohesiveness of the neighbourhood's built form.
- It supports the residential character of the long north-south streets.

District Historic/Associative Value

- Its narrow lot and its construction as part of a series of properties reflect the development of the district by small scale builders who built out short stretches of houses.

District Social/Community Value (when applicable)

APPENDIX D - Statements of Contribution

Address 197 SEATON ST

Period pre - 1913

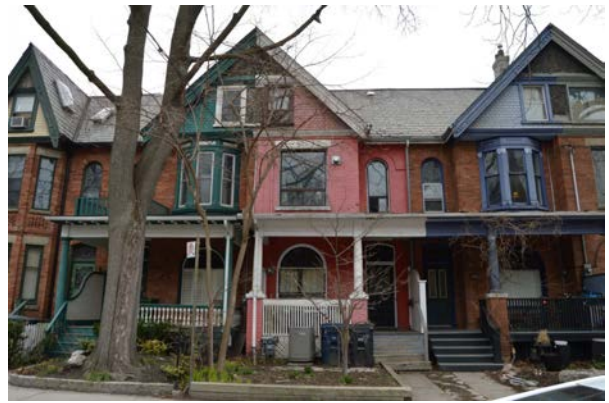
Type Row

Architectural Style(s) Queen Anne Revival

Storeys 2.5

Character Area Residential Area

Materials Brick exterior cladding, decorative
woodwork, and asphalt shingle roofing



Statement of Contribution

This property is part of an ensemble of four row houses (193-199) built in the Queen Anne Revival style. It contributes to the physical integrity of the district through its residential character, original architectural details and design characteristics.

District Design/Physical Value

- Its 2 ½ storey façade contributes to the low rise predominant scale of the district.
- Its fine grain built form with a slightly raised entrance and setback from the street, with a front yard contributes to a well defined and articulated streetwall.
- Its Queen Anne Revival style is evidenced by the protruding front gable bay; stone gargoyle on brick post, soldier brick voussoirs, stone sills and lintels; round arch opening at first storey, flat headed window at second storey, round arch window at second storey, flat headed window at front gable. The style is also supported by the surviving decorative woodwork such as the wood cornice with dentils at base and middle of front gable and decorative wood fascia at front gable.

District Contextual Value

- Its architectural style, its materiality and its scale contribute to the cohesiveness of the neighbourhood's built form.
- It supports the residential character of the long north-south streets.

District Historic/Associative Value

- Its narrow lot and its construction as part of a series of properties reflect the development of the district by small scale builders who built out short stretches of houses.

District Social/Community Value (when applicable)

APPENDIX D - Statements of Contribution

| | |
|-------------------------------|---|
| Address | 198 SEATON ST |
| Period | pre - 1879 |
| Type | Abutting |
| Architectural Style(s) | Second Empire |
| Storeys | 3 |
| Character Area | Residential Area |
| Materials | Brick exterior cladding and asphalt shingle roofing |



Statement of Contribution

This property was built in the Second Empire style as part of a pair of houses (198-200) modeled on the same plan. It contributes to the physical integrity of the district through its residential character, original architectural details and design characteristics.

District Design/Physical Value

- The 3 storey façade contributes to the low rise predominant scale of the district.
- Its fine grain built form with a slightly raised entrance and setback from the street, with a front yard contributes to a well defined and articulated streetwall.
- Its Second Empire style is evidenced by the protruding bay at the first storey; segmental arch windows with brick voussoir and shoulders; and mansard roof with dormers.

District Contextual Value

- Its architectural style, its materiality and its scale contribute to the cohesiveness of the neighbourhood's built form.
- It supports the residential character of the long north-south streets.

District Historic/Associative Value

- Its narrow lot and its construction as part of a pair of properties reflect the development of the district by small scale builders who built out short stretches of houses.

District Social/Community Value (when applicable)

APPENDIX D - Statements of Contribution

Address 199 SEATON ST

Period pre - 1913

Type Row

Architectural Style(s) Queen Anne Revival

Storeys 2.5

Character Area Residential Area

Materials Brick exterior cladding, decorative
woodwork, and asphalt shingle roofing



Statement of Contribution

This property is part of an ensemble of four row houses (193-199) built in the Queen Anne Revival style. It contributes to the physical integrity of the district through its residential character, original architectural details and design characteristics.

District Design/Physical Value

- Its 2 ½ storey façade contributes to the low rise predominant scale of the district.
- Its fine grain built form with a slightly raised entrance and setback from the street, with a front yard contributes to a well defined and articulated streetwall.
- Its Queen Anne Revival style is evidenced by the protruding front gable bay; stone gargoyle on brick post, soldier brick voussoirs, stone sills and lintels; round arch opening at first storey, flat headed bay windows at second storey, round arch window at second storey, flat headed window at front gable. The style is also supported by the surviving woodwork such as the wood cornice with dentils at base and middle of front gable, flat headed bay windows in ornamented wood casing at second storey, and decorative wood fascia at front gable.

District Contextual Value

- Its architectural style, its materiality and its scale contribute to the cohesiveness of the neighbourhood's built form.
- It supports the residential character of the long north-south streets.

District Historic/Associative Value

- Its narrow lot and its construction as part of a series of properties reflect the development of the district by small scale builders who built out short stretches of houses.

District Social/Community Value (when applicable)

APPENDIX D - Statements of Contribution

Address 200 SEATON ST

Period pre - 1879

Type Abutting

Architectural Style(s) Second Empire

Storeys 3

Character Area Residential Area

Materials Stucco exterior cladding and asphalt shingle roofing



Statement of Contribution

This property was built in the Second Empire style as part of a pair of houses (198-200) modeled on the same plan. It contributes to the physical integrity of the district through its residential character and design characteristics.

District Design/Physical Value

- Its 2 storey façade and front setback contribute to the low rise predominant scale of the district and to a well defined and articulated streetwall.
- Its Second Empire style is evidenced by the protruding gable bay at the first storey; the mansard roof with segmental arch dormers.

District Contextual Value

- Its scale contributes to the cohesiveness of the neighbourhood's built form.
- It supports the residential character of the long north-south streets.

District Historic/Associative Value

- Its narrow lot and its construction as part of a pair of properties reflect the development of the district by small scale builders who built out short stretches of houses.

District Social/Community Value (when applicable)

APPENDIX D - Statements of Contribution

Address 201 SEATON ST

Period pre - 1913

Type Row

Architectural Style(s) Victorian

Storeys 2.5

Character Area Residential Area

Materials Brick exterior cladding, decorative
woodwork, and asphalt shingle roofing



Statement of Contribution

This residential property is a representative example of Victorian architectural style. It contributes to the physical integrity of the district through its residential character, original architectural details and design characteristics.

District Design/Physical Value

- Its 2 ½ storey façade contributes to the low rise predominant scale of the district.
- Its fine grain built form with a slightly raised entrance and setback from the street, with a front yard contributes to a well defined and articulated streetwall.
- Its Queen Anne Revival style is evidenced by the protruding front gable bay; stone gargoyle on brick post, dogtooth brick inset between first and second storey windows, soldier brick voussoirs, stone sills and lintels; round arch opening at first storey, flat headed bay windows at second storey, round arch window at second storey, flat headed window at front gable. The style is also supported by the decorative wood work such as the wood cornice with dentils at base and middle of front gable and the decorative wood fascia with gable panel at front gable.

District Contextual Value

- Its architectural style, its materiality and its scale contribute to the cohesiveness of the neighbourhood's built form.
- It supports the residential character of the long north-south streets.

District Historic/Associative Value

- Its narrow lot and its construction as part of a series of properties reflect the development of the district by small scale builders who built out short stretches of houses.

District Social/Community Value (when applicable)

APPENDIX D - Statements of Contribution

Address 202 SEATON ST

Period pre - 1869

Type Abutting

Architectural Style(s) Victorian

Storeys 2.5

Character Area Residential Area

Materials Brick exterior cladding and asphalt shingle roofing



Statement of Contribution

This property was built in the Victorian style. It contributes to the physical integrity of the district through its residential character, original architectural details and design characteristics.

District Design/Physical Value

- Its 2 ½ storey façade contributes to the low rise predominant scale of the district.
- Its Victorian style is evidenced by the protruding gable bay; flat headed windows; and wooden gable running boards.

District Contextual Value

- Its architectural style, its materiality and its scale contribute to the cohesiveness of the neighbourhood's built form.
- It supports the residential character of the long north-south streets.

District Historic/Associative Value

- Its narrow lot reflects the subdivision and development of the district by small scale builders.

District Social/Community Value (when applicable)

APPENDIX D - Statements of Contribution

| | |
|-------------------------------|------------------|
| Address | 203 SEATON ST |
| Period | pre - 1879 |
| Type | Abutting |
| Architectural Style(s) | Victorian |
| Storeys | 2.5 |
| Character Area | Residential Area |

Materials Brick exterior cladding, decorative
woodwork, and asphalt shingle roofing



Statement of Contribution

This property was built in the Victorian style as part of a pair of houses (203-205) that share the same architectural form and details. It contributes to the physical integrity of the district through its residential character, original architectural detailing and design characteristics.

District Design/Physical Value

- Its 2 ½ storey façade contributes to the low rise predominant scale of the district.
- Its fine grain built form with a slightly raised entrance and setback from the street, with a front yard contributes to a well defined and articulated streetwall.
- Its Victorian style is evidenced by the protruding front gable bay; flat headed bay windows with rounded edges at first storey, round headed front door, flat headed windows with rounded edges at second storey, round arch window at front gable; stone sills, soldier brick voussoirs and shoulders. The style is also supported by the surviving decorative woodwork such as the decorative wood elements at portico and the decorative wood fascia at front gable.

District Contextual Value

- Its architectural style, its materiality and its scale contribute to the cohesiveness of the neighbourhood's built form.
- It supports the residential character of the long north-south streets.

District Historic/Associative Value

- Its narrow lot and its construction as part of a pair of properties reflect the development of the district by small scale builders who built out short stretches of houses.

District Social/Community Value (when applicable)

APPENDIX D - Statements of Contribution

Address 204 SEATON ST

Period pre - 1869

Type Abutting

Architectural Style(s) Victorian

Storeys 2.5

Character Area Residential Area

Materials Brick exterior cladding and asphalt shingle roofing



Statement of Contribution

This property was built in the Victorian style. It contributes to the physical integrity of the district through its residential character and design characteristics.

District Design/Physical Value

- Its 2 ½ storey façade and front setback contribute to the low rise predominant scale of the district and to a well defined and articulated streetwall.
- Its Victorian style is evidenced by the protruding gable bay; openings with segmental arch stained glass transom windows at first and second storey; segmental arch stained glass transom window over front door; wooden porch and wooden gable running boards.

District Contextual Value

- Its architectural style and its scale contributes to the cohesiveness of the neighbourhood's built form.
- It supports the residential character of the long north-south streets.

District Historic/Associative Value

- Its narrow lot reflects the subdivision and development of the district by small scale builders.

District Social/Community Value (when applicable)

APPENDIX D - Statements of Contribution

Address 205 SEATON ST

Period pre - 1879

Type Abutting

Architectural Style(s) Victorian

Storeys 2.5

Character Area Residential Area

Materials Brick exterior cladding, decorative
woodwork, and asphalt shingle roofing



Statement of Contribution

This property was built in the Victorian style as part of a pair of houses (203-205) that share the same architectural form and details. It contributes to the physical integrity of the district through its residential character, original architectural detailing and design characteristics.

District Design/Physical Value

- Its 2 ½ storey façade contributes to the low rise predominant scale of the district.
- Its fine grain built form with a slightly raised entrance and setback from the street, with a front yard contributes to a well defined and articulated streetwall.
- Its Victorian style is evidenced by the protruding front gable bay; flat headed bay windows with rounded edges at first storey, round headed front door, flat headed windows with rounded edges at second storey, round arch window at front gable; stone sills, soldier brick voussoirs and shoulders. The style is also supported by the surviving decorative woodwork such as the decorative wood elements at portico and the decorative wood fascia at front gable.

District Contextual Value

- Its architectural style, its materiality and its scale contribute to the cohesiveness of the neighbourhood's built form.
- It supports the residential character of the long north-south streets.

District Historic/Associative Value

- Its narrow lot and its construction as part of a pair of properties reflect the development of the district by small scale builders who built out short stretches of houses.

District Social/Community Value (when applicable)

APPENDIX D - Statements of Contribution

Address 208 SEATON ST

Period pre - 1879

Type Abutting

Architectural Style(s) Victorian

Storeys 2

Character Area Residential Area

Materials Stucco exterior cladding, decorative
woodwork, and asphalt shingle roofing



Statement of Contribution

This Victorian property was built as part of a pair of houses (208-210) modeled on the same plan (208-210). Built by Henry Bell in 1879, this property was listed by the city of Toronto in 1974. It contributes to the physical integrity of the district through its residential character, original architectural detailing and design characteristics.

District Design/Physical Value

- Its 2 storey façade contributes to the low rise predominant scale of the district.
- The roof profile contributes to the datum lines and rhythm created by the soffits punctuated with front gables.
- Its Victorian style is evidenced by the protruding front gable bay; its recessed entrance at side; the flat headed bay windows with wood casing and the wood running trim at front gable as well as under bay window roof.

District Contextual Value

- Its architectural style, its materiality and its scale contribute to the cohesiveness of the neighbourhood's built form.
- It supports the residential character of the long north-south streets.

District Historic/Associative Value

- Its narrow lot and its construction as part of a pair of properties reflect the development of the district by small scale builders who built out short stretches of houses.

District Social/Community Value (when applicable)

APPENDIX D - Statements of Contribution

Address 210 SEATON ST

Period pre - 1879

Type Abutting

Architectural Style(s) Victorian

Storeys 2

Character Area Residential Area

Materials Wood exterior cladding, decorative
woodwork, and asphalt shingle roofing



Statement of Contribution

This Victorian property was built as part of a pair of houses (208-210) modeled on the same plan (208-210). Built by Henry Bell in 1879, this property was listed by the city of Toronto in 1974. It contributes to the physical integrity of the district through its residential character, original architectural detailing and design characteristics.

District Design/Physical Value

- Its 2 storey façade contributes to the low rise predominant scale of the district.
- The roof profile contributes to the datum lines and rhythm created by the soffits punctuated with front gables.
- Its Victorian style is evidenced by the protruding front gable bay; its recessed entrance at side; its batten and seam wood cladding; the flat headed bay windows with wood casing and the wood running trim at front gable as well as under bay window roof.

District Contextual Value

- Its materiality and its scale contribute to the cohesiveness of the neighbourhood's built form.
- It supports the residential character of the long north-south streets.

District Historic/Associative Value

- Its narrow lot and its construction as part of a pair of properties reflect the development of the district by small scale builders who built out short stretches of houses.

District Social/Community Value (when applicable)

APPENDIX D - Statements of Contribution

Address 213 SEATON ST

Period pre - 1879

Type Abutting

Architectural Style(s) Vernacular

Storeys 1.5

Character Area Residential Area

Materials Brick exterior cladding and asphalt shingle roofing



Statement of Contribution

This residential property with its mansard roof is a representative example of the Vernacular style incorporating elements of architectural styles of its time while responding to local conditions and available resources. It contributes to the physical integrity of the district through its residential character and design characteristics.

District Design/Physical Value

- Its 1 ½ storey façade and front setback contribute to the low rise predominant scale of the district and to a well defined and articulated streetwall.
- Its Vernacular style is evidenced by the brick masonry; flat headed windows at first storey and flat headed dormer windows.

District Contextual Value

- Its architectural style, its materiality and its scale contribute to the cohesiveness of the neighbourhood's built form.
- It supports the residential character of the long north-south streets.

District Historic/Associative Value

- Its narrow lot reflects the subdivision and development of the district by small scale builders.

District Social/Community Value (when applicable)

APPENDIX D - Statements of Contribution

Address 216 SEATON ST

Period pre - 1913

Type Detached

Architectural Style(s) Edwardian

Storeys 3

Character Area Residential Area

Materials Brick and wood exterior cladding, and decorative woodwork



Statement of Contribution

This property is a walk-up apartment building built in the Edwardian style. Despite being a different typology from the neighbouring properties, its height, materiality and front setback are similar with the residential character of the district. It contributes to the physical integrity of the district through its residential character and design characteristics.

District Design/Physical Value

- The 3 storey façade contributes to the low rise predominant scale of the district.
- Its fine grain built form with a slightly raised entrance and setback from the street, with a front yard contributes to a well defined and articulated streetwall.
- Its Edwardian style is evidenced by the large segmental arch windows with brick voussoirs and stone sills at first storey; the flat headed oriel windows in wood casing from first to second storey; the front porch with columns and architrave, and the protruding wood cornice with brackets at parapet.

District Contextual Value

- Its architectural style, its materiality and its scale contribute to the cohesiveness of the neighbourhood's built form.
- It supports the residential character of the long north-south streets.

District Historic/Associative Value

- Its construction as an apartment building illustrates the mixture of typologies that reflect the historic socio-economic diversity of the district

District Social/Community Value (when applicable)

- It contributes to the mixture of housing typologies that expresses the historic economic diversity in the area.

APPENDIX D - Statements of Contribution

Address 220 SEATON ST

Period pre - 1890

Type Abutting

Architectural Style(s) Victorian

Storeys 2

Character Area Residential Area

Materials Brick exterior cladding and decorative
woodwork



Statement of Contribution

This residential property was built in the Victorian style. It contributes to the physical integrity of the district through its residential character and design characteristics.

District Design/Physical Value

- Its 2 storey façade contributes to the low rise predominant scale of the district.
- Its fine grain built form with a slightly raised entrance and setback from the street, with a front yard contributes to a well defined and articulated streetwall.
- Its Victorian style is evidenced by the protruding gable bay segmental arch windows; wood portico, and the wooden triangle decorative panels at front gable.

District Contextual Value

- Its architectural style, its materiality and its scale contribute to the cohesiveness of the neighbourhood's built form.
- It supports the residential character of the long north-south streets.

District Historic/Associative Value

- Its narrow lot and its construction as part of a series of properties reflect the development of the district by small scale builders who built out short stretches of houses.

District Social/Community Value (when applicable)

APPENDIX D - Statements of Contribution

Address 222 SEATON ST

Period pre - 1890

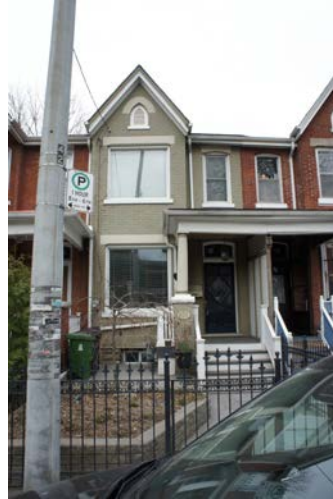
Type Row

Architectural Style(s) Victorian

Storeys 2.5

Character Area Residential Area

Materials Brick exterior cladding, and decorative
woodwork, and asphalt shingle roofing



Statement of Contribution

This residential property was built in the Victorian style as a mirror image of its neighbouring property (222-224). It contributes to the physical integrity of the district through its residential character and design characteristics.

District Design/Physical Value

- Its 2 ½ storey façade contributes to the low rise predominant scale of the district.
- Its fine grain built form with a slightly raised entrance and setback from the street, with a front yard contributes to a well defined and articulated streetwall.
- Its Victorian style is evidenced by the protruding front gable bay with flat headed windows with lintels at first and second storeys, segmental arch stained glass transom window above front door and segmental arch window at second storey above the entrance, pointed arch window at front gable; use of soldier brick voussoirs over openings.

District Contextual Value

- Its architectural style, its materiality and its scale contribute to the cohesiveness of the neighbourhood's built form.
- It supports the residential character of the long north-south streets.

District Historic/Associative Value

- Its narrow lot and its construction as part of a series of properties reflect the development of the district by small scale builders who built out short stretches of houses.

District Social/Community Value (when applicable)

APPENDIX D - Statements of Contribution

| | |
|-------------------------------|--|
| Address | 223 SEATON ST |
| Period | pre - 1919 |
| Type | Abutting |
| Architectural Style(s) | Edwardian |
| Storeys | 2 |
| Character Area | Residential Area |
| Materials | Brick exterior cladding and decorative woodwork |



Statement of Contribution

This property was built as a part of a pair of abutting houses (223-227) based on the same model. The residential building is representative example of Edwardian architectural style. It contributes to the physical integrity of the district through its residential character, original architectural details and design characteristics.

District Design/Physical Value

- Its 2 storey façade contributes to the low rise predominant scale of the district.
- Its fine grain built form with a slightly raised entrance and setback from the street, with a front yard contributes to a well defined and articulated streetwall.
- Its Edwardian style is evidenced by the segmental arch window at first and second storey; brick voussoir; wood cornice with modillions and corbelling at parapet.

District Contextual Value

- Its architectural style, its materiality and its scale contribute to the cohesiveness of the neighbourhood's built form.
- It supports the residential character of the long north-south streets.

District Historic/Associative Value

- Its narrow lot and its construction as part of a series of properties reflect the development of the district by small scale builders who built out short stretches of houses.

District Social/Community Value (when applicable)

APPENDIX D - Statements of Contribution

Address 224 SEATON ST

Period pre - 1890

Type Row

Architectural Style(s) Victorian

Storeys 2.5

Character Area Residential Area

Materials Brick exterior cladding, decorative
woodwork, and asphalt shingle roofing



Statement of Contribution

This residential property was built in the Victorian style as a mirror image of its neighbouring property (222-224). It contributes to the physical integrity of the district through its residential character and design characteristics.

District Design/Physical Value

- Its 2 ½ storey façade contributes to the low rise predominant scale of the district.
- Its fine grain built form with a slightly raised entrance and setback from the street, with a front yard contributes to a well defined and articulated streetwall.
- Its Victorian style is evidenced by the protruding front gable bay with flat headed windows with lintels at first and second storeys, segmental arch stained glass transom window above front door and segmental arch window at second storey above the entrance, pointed arch window at front gable; use of soldier brick voussoirs over openings.

District Contextual Value

- Its architectural style, its materiality and its scale contribute to the cohesiveness of the neighbourhood's built form.
- It supports the residential character of the long north-south streets.

District Historic/Associative Value

- Its narrow lot and its construction as part of a series of properties reflect the development of the district by small scale builders who built out short stretches of houses.

District Social/Community Value (when applicable)

APPENDIX D - Statements of Contribution

| | |
|-------------------------------|--|
| Address | 226 SEATON ST |
| Period | pre - 1890 |
| Type | Row |
| Architectural Style(s) | Victorian |
| Storeys | 2 |
| Character Area | Residential Area |
| Materials | Brick exterior cladding, decorative woodwork, and asphalt shingle roofing |



Statement of Contribution

This bay and gable house was built in the Victorian style. It contributes to the physical integrity of the district through its residential character, original architectural details and design characteristics.

District Design/Physical Value

- Its 2 storey façade contributes to the low rise predominant scale of the district.
- Its fine grain built form with a slightly raised entrance and setback from the street, with a front yard contributes to a well defined and articulated streetwall.
- Its Victorian style is evidenced by the protruding gable bay segmental arch windows; wood portico, and the wooden triangle decorative panels at front gable.

District Contextual Value

- Its architectural style, its materiality and its scale contribute to the cohesiveness of the neighbourhood's built form.
- It supports the residential character of the long north-south streets.

District Historic/Associative Value

- Its narrow lot and its construction as part of a series of properties reflect the development of the district by small scale builders who built out short stretches of houses.

District Social/Community Value (when applicable)

APPENDIX D - Statements of Contribution

Address 227 SEATON ST

Period pre - 1919

Type Abutting

Architectural Style(s) Edwardian

Storeys 2

Character Area Residential Area

Materials Brick exterior cladding, decorative
woodwork, and asphalt shingle roofing



Statement of Contribution

This property was built as a part of a pair of abutting houses (223-227) based on the same model. The residential building is representative example of Edwardian architectural style. It contributes to the physical integrity of the district through its residential character, original architectural details and design characteristics.

District Design/Physical Value

- Its 2 storey façade contributes to the low rise predominant scale of the district.
- Its fine grain built form with a slightly raised entrance and setback from the street, with a front yard contributes to a well defined and articulated streetwall.
- Its Edwardian style is evidenced by the segmental arch window at first and second storey; brick voussoir; wood cornice with modillions and corbelling at parapet.

District Contextual Value

- Its architectural style, its materiality and its scale contribute to the cohesiveness of the neighbourhood's built form.
- It supports the residential character of the long north-south streets.

District Historic/Associative Value

- Its narrow lot and its construction as part of a series of properties reflect the development of the district by small scale builders who built out short stretches of houses.

District Social/Community Value (when applicable)

APPENDIX D - Statements of Contribution

Address 231 SEATON ST

Period 1869

Type Detached

Architectural Style(s) Victorian/Gothic Revival

Storeys 2

Character Area Residential Area

Materials Brick exterior cladding, decorative
woodwork, and asphalt shingle roofing



Statement of Contribution

Built by William Dudley in 1869, the property is an example of the pattern of development in the mid-19th century whereby professional builders would construct series of homes in the area, often designing and customizing the plans themselves. The building was adopted by City Council in 1970s and its status was stated as Designated Part IV. Its a representative example of the Victorian/Gothic Revival style defined by Gothic detailing including bay windows and ornamental roof trim. It contributes to the physical integrity of the district through its residential character, original architectural details and design characteristics.

District Design/Physical Value

- Its 2 storey façade contributes to the low rise predominant scale of the district.
- Its fine grain built form with a slightly raised entrance and setback from the street, with a front yard contributes to a well defined and articulated streetwall.
- Its Victorian/Gothic Revival style is evidenced by the protruding front gable bay; flat headed bay windows at first storey of protruding bay, segmental arch window at first storey, flat headed transom window above front door, segmental arch dormer window, flat headed window with quatrefoil; diamond brick and arch details at front gable, brick quoins at sides, soldier brick voussoirs and lintels and stone sills. The style is also supported by the surviving decorative woodwork such as the wood running trims with gable drops at gable and dormer and wood pediment at front porch.

District Contextual Value

- Its architectural style, its materiality and its scale contribute to the cohesiveness of the neighbourhood's built form.
- It supports the residential character of the long north-south streets.

District Historic/Associative Value

- Its deep lot reflects the subdivision and development of the district by small scale builders.

District Social/Community Value (when applicable)

APPENDIX D - Statements of Contribution

Address 232 SEATON ST

Period pre - 1899

Type Detached

Architectural Style(s) Queen Anne Revival

Storeys 2.5

Character Area Residential Area

Materials Brick exterior cladding, decorative
woodwork, and asphalt shingle roofing



Statement of Contribution

This detached residential property was built in the Queen Anne Revival style. Its brick masonry construction and the many decorative wood elements on the gable and balconies contribute to the physical integrity of the district.

District Design/Physical Value

- Its 2 ½ storey façade contributes to the low rise predominant scale of the district.
- Its fine grain built form with a slightly raised entrance and setback from the street, with a front yard contributes to a well defined and articulated streetwall.
- Its Queen Anne Revival style is evidenced by the protruding front gable bay; balconies and the three centred arch window at the first storey; brick details such as the basket weave inset under the second storey window the soldier brick voussoirs above the openings. Enrichments such as the stained glass transom windows above the entrance and window at second storey; as well as the turned wood spandrels and railings on the front porch and balconies and the wood brackets and paneling at the front gable also contribute to the architectural style.

District Contextual Value

- Its architectural style, its materiality and its scale contribute to the cohesiveness of the neighbourhood's built form.
- It supports the residential character of the long north-south streets.

District Historic/Associative Value

- Its narrow lot reflects the subdivision and development of the district by small scale builders.

District Social/Community Value (when applicable)

APPENDIX D - Statements of Contribution

Address 234 SEATON ST

Period pre - 1889

Type Abutting

Architectural Style(s) Queen Anne Revival

Storeys 2.5

Character Area Residential Area

Materials Brick exterior cladding, decorative
woodwork, and asphalt shingle roofing



Statement of Contribution

This residential property was built in the Queen Anne Revival style. It contributes to the physical integrity of the district through its residential character, original architectural details and design characteristics.

District Design/Physical Value

- Its 2 ½ storey façade contributes to the low rise predominant scale of the district.
- Its fine grain built form with a slightly raised entrance and setback from the street, with a front yard contributes to a well defined and articulated streetwall.
- Its Queen Anne Revival style is evidenced by the protruding front gable bay; balconies and the three centred arch window at the first storey; brick details such as a lintel course at first and second storeys and the soldier brick voussoirs above the openings. Enrichments such as the stained glass transom windows above the entrance and window at second storey; as well as the turned wood spandrels and railings on the front porch and balconies and the wood brackets and paneling at the front gable also contribute to the architectural style.

District Contextual Value

- Its architectural style, its materiality and its scale contribute to the cohesiveness of the neighbourhood's built form.
- It supports the residential character of the long north-south streets.

District Historic/Associative Value

- Its narrow lot reflects the subdivision and development of the district by small scale builders.

District Social/Community Value (when applicable)

APPENDIX D - Statements of Contribution

Address 235 SEATON ST

Period pre - 1872

Type Abutting

Architectural Style(s) Victorian/Italianate

Storeys 2.5

Character Area Residential Area

Materials Brick exterior cladding, decorative
woodwork, and asphalt shingle roof



Statement of Contribution

The property is a representative example of the Victorian/Italianate style. It contributes to the physical integrity of the district through its residential character, original architectural details and design characteristics.

District Design/Physical Value

- Its 2 ½ storey façade contributes to the low rise predominant scale of the district.
- Its fine grain built form with a slightly raised entrance and setback from the street, with a front yard contributes to a well defined and articulated streetwall.
- Its Victorian/Italianate style is evidenced by the cross gabled roof; protruding front gable bay; segmental arch bay windows at first storey, flat headed transom window above front door, segmental arch windows at second storey, round arch window at front gable; soldier brick voussoir and stone sills. The style is also supported by the surviving decorative woodwork such as the wood running trim with gable drop at front gable.

District Contextual Value

- Its architectural style, its materiality and its scale contribute to the cohesiveness of the neighbourhood's built form.
- It supports the residential character of the long north-south streets.

District Historic/Associative Value

- Its narrow lot reflects the subdivision and development of the district by small scale builders.

District Social/Community Value (when applicable)

APPENDIX D - Statements of Contribution

Address 236 SEATON ST

Period pre - 1889

Type Abutting

Architectural Style(s) Victorian

Storeys 2

Character Area Residential Area

Materials Brick exterior cladding, decorative
woodwork, and asphalt shingle roof



Statement of Contribution

This residential property was built in the Victorian style as part of a pair of mirror image properties (236-238) that share a central front gable. It contributes to the physical integrity of the district through its residential character, original architectural details and design characteristics.

District Design/Physical Value

- Its 2 storey façade contributes to the low rise predominant scale of the district.
- Its fine grain built form with a slightly raised entrance and setback from the street, with a front yard contributes to a well defined and articulated streetwall.
- Its Victorian style is evidenced by the cross gabled roof with central front gable; the decorative wood gable running board, the wooden porch; and the segmental arch windows with polychrome brick voussoirs.

District Contextual Value

- Its architectural style, its materiality and its scale contribute to the cohesiveness of the neighbourhood's built form.
- It supports the residential character of the long north-south streets.

District Historic/Associative Value

- Its narrow lot and its construction as part of a pair of properties reflect the development of the district by small scale builders who built out short stretches of houses.

District Social/Community Value (when applicable)

APPENDIX D - Statements of Contribution

Address 237 SEATON ST

Period pre - 1872

Type Abutting

Architectural Style(s) Victorian/Romanesque Revival

Storeys 2.5

Character Area Residential Area

Materials Brick exterior cladding, decorative
woodwork, and asphalt shingle roof



Statement of Contribution

This property was built in the Victorian/Romanesque Revival style. It contributes to the physical integrity of the district through its residential character, original architectural details and design characteristics.

District Design/Physical Value

- Its 2 ½ storey façade contributes to the low rise predominant scale of the district.
- Its fine grain built form with a slightly raised entrance and setback from the street, with a front yard contributes to a well defined and articulated streetwall.
- Its combination of Victorian and Romanesque Revival styles is evidenced by the protruding front gable bay; flat headed basement window with stone lintel, round arch window at first storey, flat headed stained glass side and transom windows at front door, segmental arch window at second storey, round arch window at front gable; basket weave brick banding between first and second storey, and soldier brick voussoirs. The style is also supported by the surviving decorative woodwork such as the wood ornamentation and brackets at portico and simple decorative fascia at front gable.

District Contextual Value

- Its architectural style, its materiality and its scale contribute to the cohesiveness of the neighbourhood's built form.
- It supports the residential character of the long north-south streets.

District Historic/Associative Value

- Its narrow lot reflects the subdivision and development of the district by small scale builders.

District Social/Community Value (when applicable)

APPENDIX D - Statements of Contribution

Address 238 SEATON ST

Period pre - 1889

Type Abutting

Architectural Style(s) Victorian

Storeys 2

Character Area Residential Area

Materials Brick exterior cladding, decorative
woodwork, and asphalt shingle roof



Statement of Contribution

This residential property was built in the Victorian style as part of a pair of mirror image properties (236-238) that share a central front gable. It contributes to the physical integrity of the district through its residential character, original architectural details and design characteristics.

District Design/Physical Value

- Its 2 storey façade contributes to the low rise predominant scale of the district.
- Its fine grain built form with a slightly raised entrance and setback from the street, with a front yard contributes to a well defined and articulated streetwall.
- Its Victorian style is evidenced by the cross gabled roof with central front gable; the decorative wood gable running board, the wooden porch; and the segmental arch windows with polychrome brick voussoirs.

District Contextual Value

- Its architectural style, its materiality and its scale contribute to the cohesiveness of the neighbourhood's built form.
- It supports the residential character of the long north-south streets.

District Historic/Associative Value

- Its narrow lot and its construction as part of a pair of properties reflect the development of the district by small scale builders who built out short stretches of houses.

District Social/Community Value (when applicable)

APPENDIX D - Statements of Contribution

Address 239 SEATON ST

Period pre - 1872

Type Abutting

Architectural Style(s) Georgian Revival

Storeys 2

Character Area Residential Area

Materials Brick exterior cladding and asphalt shingle roof



Statement of Contribution

This residential property with its side gabled roof is a representative example of the Georgian Revival style. It contributes to the physical integrity of the district through its residential character, original architectural details and design characteristics.

District Design/Physical Value

- Its 2 storey façade contributes to the low rise predominant scale of the district.
- Its fine grain built form with a slightly raised entrance and setback from the street, with a front yard contributes to a well defined and articulated streetwall.
- Its Georgian Revival style is evidenced by the segmental arch windows at first and second storey, flat headed transom window at first storey; brick masonry, brick voussoirs; columns and architrave at front porch.

District Contextual Value

- Its architectural style, its materiality and its scale contribute to the cohesiveness of the neighbourhood's built form.
- It supports the residential character of the long north-south streets.

District Historic/Associative Value

- Its narrow lot reflects the subdivision and development of the district by small scale builders.

District Social/Community Value (when applicable)

APPENDIX D - Statements of Contribution

Address 240 SEATON ST

Period pre - 1889

Type Abutting

Architectural Style(s) Victorian/Italianate

Storeys 2.5

Character Area Residential Area

Materials Brick exterior cladding, decorative
woodwork, and asphalt shingle roofing



Statement of Contribution

This property was built in the Victorian/Italianate styles. It contributes to the physical integrity of the district through its residential character, original architectural details and design characteristics.

District Design/Physical Value

- Its 2 ½ storey façade contributes to the low rise predominant scale of the district.
- Its fine grain built form with a slightly raised entrance and setback from the street, with a front yard contributes to a well defined and articulated streetwall.
- Its Victorian and Italianate style is evidenced by brick quoins at sides; brackets under eaves; segmental arch windows with polychrome soldier brick voussoirs with stone keystones and wood sashes; protruding bay window at first storey with ridge crest, stained glass transom window above front door and running trim with gable drop at the front gable and wood porch.

District Contextual Value

- Its architectural style, its materiality and its scale contribute to the cohesiveness of the neighbourhood's built form.
- It supports the residential character of the long north-south streets.

District Historic/Associative Value

- Its narrow lot reflects the subdivision and development of the district by small scale builders.

District Social/Community Value (when applicable)

APPENDIX D - Statements of Contribution

Address 241 SEATON ST

Period pre - 1872

Type Abutting

Architectural Style(s) Victorian/Italianate

Storeys 2.5

Character Area Residential Area

Materials Brick exterior cladding and asphalt shingle roofing



Statement of Contribution

This property is a representative example of the Victorian/Italianate style. It contributes to the physical integrity of the district through its residential character, original architectural details and design characteristics.

District Design/Physical Value

- Its 2 ½ storey façade contributes to the low rise predominant scale of the district.
- Its fine grain built form with a slightly raised entrance and setback from the street, with a front yard contributes to a well defined and articulated streetwall.
- Its Victorian/Italianate style is evidenced by the cross gabled roof; protruding front gable bay; flat headed bay windows and door at basement, segmental arch bay windows at first storey, flat headed transom window above front door, segmental arch windows at second storey, wood shutters at windows of protruding bay at second storey, round arch window at front gable; brick voussoirs; metal sills and simple decorative wood fascia with gable drop at front gable.

District Contextual Value

- Its architectural style, its materiality and its scale contribute to the cohesiveness of the neighbourhood's built form.
- It supports the residential character of the long north-south streets.

District Historic/Associative Value

- Its narrow lot reflects the subdivision and development of the district by small scale builders.

District Social/Community Value (when applicable)

APPENDIX D - Statements of Contribution

| | |
|-------------------------------|--|
| Address | 242 SEATON ST |
| Period | pre - 1913 |
| Type | Abutting |
| Architectural Style(s) | Edwardian |
| Storeys | 2.5 |
| Character Area | Residential Area |
| Materials | brick and wood exterior cladding and asphalt shingle roofing |



Statement of Contribution

This property was built as part of a pair of mirror image houses (242-244) built in the Edwardian style. It contributes to the physical integrity of the district through its residential character and design characteristics.

District Design/Physical Value

- Its 2 ½ storey façade contributes to the low rise predominant scale of the district.
- Its façade and front setback contribute to a well defined and articulated streetwall.
- Its Edwardian style is evidenced by the cross gabled roof with Scottish dormer and the flat headed doorway with simplified classical door surround.

District Contextual Value

- Its materiality and its scale contribute to the cohesiveness of the neighbourhood's built form.
- It supports the residential character of the long north-south streets.

District Historic/Associative Value

- Its narrow lot and its construction as part of a pair of properties reflect the development of the district by small scale builders who built out short stretches of houses.

District Social/Community Value (when applicable)

APPENDIX D - Statements of Contribution

Address 243 SEATON ST

Period pre - 1909

Type Row

Architectural Style(s) Edwardian

Storeys 2.5

Character Area Residential Area

Materials Brick and wood exterior cladding,
asphalt shingle roofing



Statement of Contribution

This property was built as part of a pair of houses (243-245) that share the same architectural form and details. This building is representative example of Edwardian style. It contributes to the physical integrity of the district through its residential character, original architectural details and design characteristics.

District Design/Physical Value

- Its 2 ½ storey façade contributes to the low rise predominant scale of the district.
- Its fine grain built form with a slightly raised entrance and setback from the street, with a front yard contributes to a well defined and articulated streetwall.
- Its Edwardian style is evidenced by the flat headed window at first storey, flat headed bay windows in wood casing at second storey, flat headed dormer windows; and wood pediment at dormer.

District Contextual Value

- Its architectural style, its materiality and its scale contribute to the cohesiveness of the neighbourhood's built form.
- It supports the residential character of the long north-south streets.

District Historic/Associative Value

- Its narrow lot and its construction as part of a pair of properties reflect the development of the district by small scale builders who built out short stretches of houses.

District Social/Community Value (when applicable)

APPENDIX D - Statements of Contribution

Address 244 SEATON ST

Period pre - 1913

Type Abutting

Architectural Style(s) Edwardian

Storeys 2.5

Character Area Residential Area

Materials brick and wood exterior cladding and asphalt shingle roofing



Statement of Contribution

This property was built as part of a pair of mirror image houses (242-244) built in the Edwardian style. It contributes to the physical integrity of the district through its residential character and design characteristics.

District Design/Physical Value

- Its 2 ½ storey façade contributes to the low rise predominant scale of the district.
- Its Edwardian style is evidenced by the cross gabled roof with Scottish dormer; the segmental arch window at the first storey and the flat headed doorway with simplified classical door surround.

District Contextual Value

- Its architectural style, its materiality and its scale contribute to the cohesiveness of the neighbourhood's built form.
- It supports the residential character of the long north-south streets.

District Historic/Associative Value

- Its narrow lot and its construction as part of a pair of properties reflect the development of the district by small scale builders who built out short stretches of houses.

District Social/Community Value (when applicable)

APPENDIX D - Statements of Contribution

Address 245 SEATON ST

Period pre - 1909

Type Row

Architectural Style(s) Edwardian

Storeys 2.5

Character Area Residential Area

Materials Brick and wood exterior cladding and asphalt shingle roofing



Statement of Contribution

This property was built as part of a pair of houses (243-245) that share the same architectural form and details. This building is representative example of Edwardian style. It contributes to the physical integrity of the district through its residential character, original architectural details and design characteristics.

District Design/Physical Value

- Its 2 ½ storey façade contributes to the low rise predominant scale of the district.
- Its fine grain built form with a slightly raised entrance and setback from the street, with a front yard contributes to a well defined and articulated streetwall.
- Its Edwardian style is evidenced by the flat headed window at first storey, flat headed bay windows in wood casing at second storey, flat headed dormer windows; and wood pediment at dormer.

District Contextual Value

- Its architectural style, its materiality and its scale contribute to the cohesiveness of the neighbourhood's built form.
- It supports the residential character of the long north-south streets.

District Historic/Associative Value

- Its narrow lot and its construction as part of a pair of properties reflect the development of the district by small scale builders who built out short stretches of houses.

District Social/Community Value (when applicable)

APPENDIX D - Statements of Contribution

Address 247 SEATON ST

Period pre - 1909

Type Row

Architectural Style(s) Edwardian

Storeys 2.5

Character Area Residential Area

Materials Brick and wood exterior cladding and asphalt shingle roofing



Statement of Contribution

This residential property is representative example of Edwardian architectural style. It contributes to the physical integrity of the district through its residential character, original architectural details and design characteristics.

District Design/Physical Value

- Its 2 ½ storey façade contributes to the low rise predominant scale of the district.
- Its fine grain built form with a slightly raised entrance and setback from the street, with a front yard contributes to a well defined and articulated streetwall.
- Its Edwardian style is evidenced by the brick piers with corbelling separating bays at roof; segmental arch window with wood shutters at first storey, flat headed bay windows in wood casing at second storey, flat headed dormer window; wood pediment at dormer; soldier brick voussoir, stone sill; wood cornice with dentils under roof eave and at bay windows.

District Contextual Value

- Its architectural style, its materiality and its scale contribute to the cohesiveness of the neighbourhood's built form.
- It supports the residential character of the long north-south streets.

District Historic/Associative Value

- Its narrow lot and its construction as part of a series of properties reflect the development of the district by small scale builders who built out short stretches of houses.

District Social/Community Value (when applicable)

APPENDIX D - Statements of Contribution

| | |
|-------------------------------|------------------|
| Address | 249 SEATON ST |
| Period | pre - 1875 |
| Type | Abutting |
| Architectural Style(s) | Victorian |
| Storeys | 1.5 |
| Character Area | Residential Area |



Materials Brick exterior cladding, decorative woodwork, and asphalt shingle roofing

Statement of Contribution

This residential property is a representative example of the Victorian style. It contributes to the physical integrity of the district through its residential character, original architectural details and design characteristics.

District Design/Physical Value

- Its 1 ½ storey façade contributes to the low rise predominant scale of the district.
- Its fine grain built form with a slightly raised entrance and setback from the street, with a front yard contributes to a well defined and articulated streetwall.
- Its Victorian style is evidenced by the recessed entrance at side; segmental arch windows at first storey, flat headed windows at addition on roof and wood sills.

District Contextual Value

- Its architectural style, its materiality and its scale contribute to the cohesiveness of the neighbourhood's built form.
- It supports the residential character of the long north-south streets.

District Historic/Associative Value

- Its narrow lot reflects the subdivision and development of the district by small scale builders.

District Social/Community Value (when applicable)

APPENDIX D - Statements of Contribution

Address 251 SEATON ST

Period pre - 1889

Type Abutting

Architectural Style(s) Victorian

Storeys 2.5

Character Area Residential Area

Materials Brick exterior cladding, decorative
woodwork, and asphalt shingle roofing



Statement of Contribution

This residential property is a representative example of the Victorian style. It contributes to the physical integrity of the district through its residential character, original architectural details and design characteristics.

District Design/Physical Value

- Its 2 ½ storey façade contributes to the low rise predominant scale of the district.
- Its fine grain built form with a slightly raised entrance and setback from the street, with a front yard contributes to a well defined and articulated streetwall.
- Its Victorian style is evidenced by the cross gabled roof, protruding front gable bay; segmental arch bay windows at first storey with flower boxes below windows, flat headed fanlight transom window above front door, segmental arch windows with wood shutters at second storey and front gable; ridge crest above bay windows; Juliet at window on second storey; soldier brick voussoirs and keystones. The style is also supported by the surviving decorative woodwork such as the round arch windows in decorative wood casing at addition on roof, wood cornice with dentils under roof eave, decorative wood fascia with brackets at front gable and wood brackets at addition on roof.

District Contextual Value

- Its architectural style, its materiality and its scale contribute to the cohesiveness of the neighbourhood's built form.
- It supports the residential character of the long north-south streets.

District Historic/Associative Value

- Its narrow lot reflects the subdivision and development of the district by small scale builders.

District Social/Community Value (when applicable)

APPENDIX D - Statements of Contribution

Address 253 SEATON ST

Period after - 1924

Type Abutting

Architectural Style(s) Vernacular

Storeys 2

Character Area Residential Area

Materials Brick exterior cladding and wood shingle roofing



Statement of Contribution

This property was built as part of a pair of houses (253-255) that share the same architectural form and details. Its a representative example of the Vernacular architectural style incorporating elements of architectural styles of its time while responding to local conditions and available resources. It also contributes to the physical integrity of the district through its residential character and design characteristics.

District Design/Physical Value

- Its 2 storey façade and front setback contribute to the low rise predominant scale of the district and to a well defined and articulated streetwall.
- Its Vernacular style is evidenced by the brick piers with corbelling at sides; flat headed window with wood shutters at first storey and the segmental arch windows with wood shutters at second storey.

District Contextual Value

- Its architectural style, its materiality and its scale contribute to the cohesiveness of the neighbourhood's built form.
- It supports the residential character of the long north-south streets.

District Historic/Associative Value

- Its narrow lot and its construction as part of a pair of properties reflect the development of the district by small scale builders who built out short stretches of houses.

District Social/Community Value (when applicable)

APPENDIX D - Statements of Contribution

Address 255 SEATON ST

Period after - 1924

Type Abutting

Architectural Style(s) Vernacular

Storeys 2

Character Area Residential Area

Materials Brick exterior cladding and wood shingle roofing



Statement of Contribution

This property was built as part of a pair of houses (253-255) that share the same architectural form and details. Its a representative example of the Vernacular architectural style incorporating elements of architectural styles of its time while responding to local conditions and available resources. It also contributes to the physical integrity of the district through its residential character and design characteristics.

District Design/Physical Value

- Its 2 storey façade and front setback contribute to the low rise predominant scale of the district and to a well defined and articulated streetwall.
- Its Vernacular style is evidenced by the brick piers with corbelling at sides; flat headed window with wood shutters at first storey and the segmental arch windows with wood shutters at second storey.

District Contextual Value

- Its architectural style, its materiality and its scale contribute to the cohesiveness of the neighbourhood's built form.
- It supports the residential character of the long north-south streets.

District Historic/Associative Value

- Its narrow lot and its construction as part of a pair of properties reflect the development of the district by small scale builders who built out short stretches of houses.

District Social/Community Value (when applicable)

APPENDIX D - Statements of Contribution

Address 256 SEATON ST

Period pre - 1884

Type Abutting

Architectural Style(s) Victorian

Storeys 2.5

Character Area Residential Area

Materials Brick exterior cladding, decorative
woodwork, and asphalt shingle roofing



Statement of Contribution

This property was built in the Victorian style. It contributes to the physical integrity of the district through its residential character, original architectural details and design characteristics.

District Design/Physical Value

- Its 2 ½ storey façade contributes to the low rise predominant scale of the district.
- Its fine grain built form with a slightly raised entrance and setback from the street, with a front yard contributes to a well defined and articulated streetwall.
- Its Victorian style is evidenced by the protruding gable bay; the segmental arch windows at the first and second storeys, and the segmental arch front door with glass transom window. The style is also supported by the masonry including soldier brick voussoirs and stone sills; and wood details such as modillions under front gable base and the simple decorative fascia at front gable.

District Contextual Value

- Its architectural style, its materiality and its scale contribute to the cohesiveness of the neighbourhood's built form.
- It supports the residential character of the long north-south streets.

District Historic/Associative Value

- Its narrow lot reflects the subdivision and development of the district by small scale builders.

District Social/Community Value (when applicable)

APPENDIX D - Statements of Contribution

Address 257 SEATON ST

Period pre - 1875

Type Row

Architectural Style(s) Victorian

Storeys 2

Character Area Residential Area

Materials Wood exterior cladding and asphalt shingle roofing



Statement of Contribution

This residential property was built as a part of a series of three Victorian row houses (257-261). It contributes to the physical integrity of the district through its residential character and design characteristics.

District Design/Physical Value

- Its 2 storey façade contributes to the low rise predominant scale of the district.
- Its fine grain built form with a slightly raised entrance and setback from the street, with a front yard contributes to a well defined and articulated streetwall.
- Its Victorian style is evidenced by the cross gabled roof; flat headed bay windows at first storey, flat headed transom window with wood casing and brackets above front door, flat headed window at second storey and flat headed door to wood balcony above bay windows at second storey.

District Contextual Value

- Its architectural style and its scale contribute to the cohesiveness of the neighbourhood's built form.
- It supports the residential character of the long north-south streets.

District Historic/Associative Value

- Its narrow lot and its construction as part of a series of properties reflect the development of the district by small scale builders who built out short stretches of houses.

District Social/Community Value (when applicable)

APPENDIX D - Statements of Contribution

Address 258 SEATON ST

Period pre-1884

Type Abutting

Architectural Style(s) Stripped traditional

Storeys 2

Character Area Residential Area

Materials Brick and wood exterior cladding and asphalt shingle roofing



Statement of Contribution

This property was originally built in the late 19th century. It contributes to the physical integrity of the district through its residential character.

District Design/Physical Value

- Its 2 storey façade contributes to the low rise predominant scale of the district.
- Its projecting bay, slightly raised entrance and setback from the street, with a front yard contribute to a well defined and articulated streetwall.

District Contextual Value

- Its materiality and its scale contribute to the cohesiveness of the neighbourhood's built form.
- It supports the residential character of the long north-south streets.

District Historic/Associative Value

- Its narrow lot reflects the subdivision and development of the district by small scale builders.

District Social/Community Value (when applicable)

APPENDIX D - Statements of Contribution

Address 259 SEATON ST

Period pre - 1875

Type Row

Architectural Style(s) Victorian

Storeys 2.5

Character Area Residential Area

Materials Brick exterior cladding, decorative
woodwork, and asphalt shingle roofing



Statement of Contribution

This residential property was built as part of a series of three Victorian row houses (257-261). It contributes to the physical integrity of the district through its residential character and design characteristics.

District Design/Physical Value

- Its 2 ½ storey façade contributes to the low rise predominant scale of the district.
- Its fine grain built form with a slightly raised entrance and setback from the street, with a front yard contributes to a well defined and articulated streetwall.
- Its Victorian style is evidenced by the cross gabled roof; brick lintel course at first and second storey, brick banding at mid first storey; flat headed bay windows at first storey, flat headed transom window above front door, flat headed windows at second storey, round arch window at front gable; soldier brick voussoirs and shoulders. The style is also supported by the decorative wood elements such as the running trim and gable drop.

District Contextual Value

- Its materiality and its scale contribute to the cohesiveness of the neighbourhood's built form.
- It supports the residential character of the long north-south streets.

District Historic/Associative Value

- Its narrow lot and its construction as part of a series of properties reflect the development of the district by small scale builders who built out short stretches of houses.

District Social/Community Value (when applicable)

APPENDIX D - Statements of Contribution

Address 260 SEATON ST

Period pre - 1890

Type Abutting

Architectural Style(s) Second Empire

Storeys 3

Character Area Residential Area

Materials Brick exterior cladding, decorative
woodwork, and asphalt shingle roofing



Statement of Contribution

This property was built as part of a pair of Second Empire homes (260-262) built on the same model. It contributes to the physical integrity of the district through its residential character, original architectural details and design characteristics.

District Design/Physical Value

- Its 3 storey façade contributes to the low rise predominant scale of the district.
- Its fine grain built form with a slightly raised entrance and setback from the street, with a front yard contributes to a well defined and articulated streetwall.
- Its Second Empire style is evidenced by the details in the brick masonry, such as the brick lintel course at the first and second storeys; the segmental arch windows with soldier brick voussoirs in contrasting brick; the round arch dormer windows with wood casings and the wood cornices under eave and fish scale and diamond banding in slate on the mansard roof.

District Contextual Value

- Its architectural style, its materiality and its scale contribute to the cohesiveness of the neighbourhood's built form.
- It supports the residential character of the long north-south streets.

District Historic/Associative Value

- Its narrow lot and its construction as part of a pair of properties reflect the development of the district by small scale builders who built out short stretches of houses.

District Social/Community Value (when applicable)

APPENDIX D - Statements of Contribution

Address 261 SEATON ST

Period pre - 1875

Type Row

Architectural Style(s) Victorian

Storeys 2

Character Area Residential Area

Materials stucco exterior cladding, decorative
woodwork, and asphalt shingle roofing



Statement of Contribution

This residential property was built as part of a series of three Victorian row houses (257-261). It contributes to the physical integrity of the district through its residential character and design characteristics.

District Design/Physical Value

- Its 2 storey façade contributes to the low rise predominant scale of the district.
- Its fine grain built form with a slightly raised entrance and setback from the street, with a front yard contributes to a well defined and articulated streetwall.
- Its Victorian style is evidenced by the cross gabled roof, flat headed bay windows at first storey, flat headed window in wood casing at second storey, flat headed door to wood balcony over bay windows at second storey; decorative wood ornaments and brackets at balcony roof, wood running trim and fascia at front gable.

District Contextual Value

- Its architectural style, its materiality and its scale contribute to the cohesiveness of the neighbourhood's built form.
- It supports the residential character of the long north-south streets.

District Historic/Associative Value

- Its narrow lot and its construction as part of a series of properties reflect the development of the district by small scale builders who built out short stretches of houses.

District Social/Community Value (when applicable)

APPENDIX D - Statements of Contribution

Address 262 SEATON ST

Period pre - 1890

Type Abutting

Architectural Style(s) Second Empire

Storeys 3

Character Area Residential Area

Materials Brick exterior cladding, decorative
woodwork, and slate roofing



Statement of Contribution

This property was built as part of a pair of Second Empire homes (260-262) built on the same model. It contributes to the physical integrity of the district through its residential character, original architectural details and design characteristics.

District Design/Physical Value

- Its 3 storey façade contributes to the low rise predominant scale of the district.
- Its fine grain built form with a slightly raised entrance and setback from the street, with a front yard contributes to a well defined and articulated streetwall.
- Its Second Empire style is evidenced by the details in the brick masonry, such as the brick lintel course at the first and second storeys; the segmental arch windows with soldier brick voussoirs in contrasting brick; the round arch dormer windows with wood casings and the wood cornices under eave and fish scale and diamond banding in slate on the mansard roof.

District Contextual Value

- Its architectural style, its materiality and its scale contribute to the cohesiveness of the neighbourhood's built form.
- It supports the residential character of the long north-south streets.

District Historic/Associative Value

- Its narrow lot and its construction as part of a pair of properties reflect the development of the district by small scale builders who built out short stretches of houses.

District Social/Community Value (when applicable)

APPENDIX D - Statements of Contribution

Address 263 SEATON ST

Period pre - 1875

Type Abutting

Architectural Style(s) Victorian

Storeys 1

Character Area Residential Area

Materials wood shingle exterior cladding,
decorative woodwork, and asphalt
shingle roofing



Statement of Contribution

This residential property was built as part of a pair of Victorian houses (263-265). It contributes to the physical integrity of the district through its residential character, original architectural detailing and design characteristics.

District Design/Physical Value

- Its 1 storey façade contributes to the low rise predominant scale of the district.
- Its fine grain built form with a slightly raised entrance and setback from the street, with a front yard contributes to a well defined and articulated streetwall.
- Its Victorian style is evidenced by the cross gabled roof; segmental arch windows in at first storey, segmental arch transom window above front door; and decorative wood fascia with gable drop at front gable.

District Contextual Value

- Its architectural style, its materiality and its scale contribute to the cohesiveness of the neighbourhood's built form.
- It supports the residential character of the long north-south streets.

District Historic/Associative Value

- Its narrow lot and its construction as part of a pair of properties reflect the development of the district by small scale builders who built out short stretches of houses.

District Social/Community Value (when applicable)

APPENDIX D - Statements of Contribution

Address 264 SEATON ST

Period 1933

Type Abutting

Architectural Style(s) Stripped Classical

Storeys 2

Character Area Residential Area

Materials brick exterior cladding



Statement of Contribution

This property was built in 1933, for the Toronto Evening Telegram, a newspaper company. It was constructed in brick masonry in a Stripped Classical style. While the building has been transformed into residential units, its size and architectural expression translate its initial industrial/commercial function. It contributes to the physical integrity of the district through its original architectural detailing and design characteristics.

District Design/Physical Value

- Its 2 storey façade and front setback contribute to the low rise predominant scale of the district and to a well defined and articulated streetwall.
- Its architectural expression drawing on elements from classical language, such as the large flat headed openings at the main storey with round arch bays with keystones at the second storey; the use of brick piers and panes to articulate the façade and the contrasting banding and keystones.

District Contextual Value

- Its architectural style, its materiality and its scale contribute to the cohesiveness of the neighbourhood's built form.

District Historic/Associative Value

- The building is associated to the Evening Telegraph which is one of the historic industries that moved into the district, influencing the built.

District Social/Community Value (when applicable)

APPENDIX D - Statements of Contribution

Address 265 SEATON ST

Period pre - 1875

Type Abutting

Architectural Style(s) Victorian

Storeys 1

Character Area Residential Area

Materials Stone veneer exterior cladding and asphalt shingle roofing



Statement of Contribution

This residential property was built as part of a pair of Victorian houses (263-265). It contributes to the physical integrity of the district through its residential character, original architectural detailing and design characteristics.

District Design/Physical Value

- Its 1 storey façade and front setback contribute to the low rise predominant scale of the district and to a well defined and articulated streetwall.
- Its Victorian style is evidenced by the cross gabled roof; protruded entrance with flat headed bay windows and segmental arch windows.

District Contextual Value

- Its architectural style and its scale contribute to the cohesiveness of the neighbourhood's built form.
- It supports the residential character of the long north-south streets.

District Historic/Associative Value

- Its narrow lot and its construction as part of a pair of properties reflect the development of the district by small scale builders who built out short stretches of houses.

District Social/Community Value (when applicable)

APPENDIX D - Statements of Contribution

Address 267 SEATON ST

Period pre - 1890

Type Abutting

Architectural Style(s) Victorian/Queen Anne Revival

Storeys 2.5

Character Area Residential Area

Materials Brick exterior cladding, decorative
woodwork, and asphalt shingle roofing



Statement of Contribution

This residential property is a representative example of the Victorian style. It contributes to the physical integrity of the district through its residential character, original architectural detailing and design characteristics.

District Design/Physical Value

- Its 2 ½ storey façade contributes to the low rise predominant scale of the district.
- Its fine grain built form with a slightly raised entrance and setback from the street, with a front yard contributes to a well defined and articulated streetwall.
- Its Victorian style is evidenced by the cross gabled roof; protruding bays at first storey with recessed pier; brick lintel courses, basket weave brick detail under front gable window; segmental arch opening at first storey, round arch transom window above front door, flat headed openings with flat headed stained glass transom windows at second storey, flat headed front gable window and soldier brick voussoirs. The style is also supported by the surviving decorative woodwork such as the decorative wood triangular panels, gable panel and gable drop at front gable.

District Contextual Value

- Its architectural style, its materiality and its scale contribute to the cohesiveness of the neighbourhood's built form.
- It supports the residential character of the long north-south streets.

District Historic/Associative Value

- Its narrow lot reflects the subdivision and development of the district by small scale builders.

District Social/Community Value (when applicable)

APPENDIX D - Statements of Contribution

Address 268 SEATON ST

Period pre - 1913

Type Row

Architectural Style(s) Queen Anne Revival

Storeys 2.5

Character Area Residential Area

Materials brick and wood shingle exterior cladding, decorative woodwork, and asphalt shingle roofing



Statement of Contribution

This property was built as part of an ensemble of three row houses (268-272) in the Queen Anne Revival style. It contributes to the physical integrity of the district through its residential character, original architectural detailing and design characteristics.

District Design/Physical Value

- Its 2 ½ storey façade contributes to the low rise predominant scale of the district.
- Its fine grain built form with a slightly raised entrance and setback from the street, with a front yard contributes to a well defined and articulated streetwall.
- Its Queen Anne Revival style is evidenced by the protruding front gable; the brick ornament at the second storey, the brick lintel course with dentils at the first storey, the soldier brick voussoirs over the round arch windows, stone lintels over the flat headed windows in the bay, and stone sills; as well as the wood decoration including running boards and fish scale wood cladding. The stained glass transom window at the first storey also supports the style.

District Contextual Value

- Its architectural style, its materiality and its scale contribute to the cohesiveness of the neighbourhood's built form.
- It supports the residential character of the long north-south streets.

District Historic/Associative Value

- Its narrow lot and its construction as part of a series of properties reflect the development of the district by small scale builders who built out short stretches of houses.

District Social/Community Value (when applicable)

APPENDIX D - Statements of Contribution

Address 270 SEATON ST

Period pre - 1913

Type Row

Architectural Style(s) Queen Anne Revival

Storeys 2.5

Character Area Residential Area

Materials brick and wood shingle exterior cladding, decorative woodwork, and asphalt shingle roofing



Statement of Contribution

This property was built as part of an ensemble of three row houses (268-272) in the Queen Anne Revival style. It contributes to the physical integrity of the district through its residential character, original architectural detailing and design characteristics.

District Design/Physical Value

- Its 2 ½ storey façade contributes to the low rise predominant scale of the district.
- Its fine grain built form with a slightly raised entrance and setback from the street, with a front yard contributes to a well defined and articulated streetwall.
- Its Queen Anne Revival style is evidenced by the protruding front gable; the brick ornament at the second storey, the brick lintel course with dentils at the first storey, the soldier brick voussoirs over the round arch windows, stone lintels over the flat headed windows in the bay, and stone sills; as well as the wood decoration including second store bay window and recessed turned wood balcony at the third storey, running boards and fish scale wood cladding. The richness of the wood details and the stained glass transom window at the first storey support the style.

District Contextual Value

- Its architectural style, its materiality and its scale contribute to the cohesiveness of the neighbourhood's built form.
- It supports the residential character of the long north-south streets.

District Historic/Associative Value

- Its narrow lot and its construction as part of a series of properties reflect the development of the district by small scale builders who built out short stretches of houses.

District Social/Community Value (when applicable)

APPENDIX D - Statements of Contribution

Address 272 SEATON ST

Period pre - 1913

Type Row

Architectural Style(s) Queen Anne Revival

Storeys 2.5

Character Area Residential Area

Materials brick and wood shingle exterior cladding, decorative woodwork, and asphalt shingle roofing



Statement of Contribution

This property was built as part of an ensemble of three row houses (268-272) in the Queen Anne Revival style. It contributes to the physical integrity of the district through its residential character, original architectural detailing and design characteristics.

District Design/Physical Value

- Its 2 ½ storey façade contributes to the low rise predominant scale of the district.
- Its fine grain built form with a slightly raised entrance and setback from the street, with a front yard contributes to a well defined and articulated streetwall.
- Its Queen Anne Revival style is evidenced by the protruding front gable; the brick detailing such as soldier brick voussoirs over the round arch windows, stone lintels over the flat headed windows in the bay, and stone sills; as well as the wood decoration and finishing of the gable at the third storey, including running boards and fish scale wood cladding.

District Contextual Value

- Its architectural style, its materiality and its scale contribute to the cohesiveness of the neighbourhood's built form.
- It supports the residential character of the long north-south streets.

District Historic/Associative Value

- Its narrow lot and its construction as part of a series of properties reflect the development of the district by small scale builders who built out short stretches of houses.

District Social/Community Value (when applicable)

APPENDIX D - Statements of Contribution

| | |
|-------------------------------|---|
| Address | 295 SEATON ST |
| Period | pre - 1890 |
| Type | Abutting |
| Architectural Style(s) | Victorian |
| Storeys | 2.5 |
| Character Area | Residential Area |
| Materials | Brick exterior cladding and asphalt shingle roofing |



Statement of Contribution

This Victorian residential building was built as part of a pair of houses (295-297) that share the same architectural form and details. It contributes to the physical integrity of the district through its residential character, architectural detailing and design characteristics.

District Design/Physical Value

- Its 2 ½ storey façade contributes to the low rise predominant scale of the district.
- Its fine grain built form with a slightly raised entrance and setback from the street, with a front yard contributes to a well defined and articulated streetwall.
- Its Victorian style is evidenced by the cross gabled roof; protruding front gable bay; segmental arch bay opening at first storey with segmental arch stained glass transom window at first storey, flat headed stained glass transom window above front door, segmental arch windows at second storey and front gable; brick voussoirs and wood sills.

District Contextual Value

- Its architectural style, its materiality and its scale contribute to the cohesiveness of the neighbourhood's built form.
- It supports the residential character of the long north-south streets.

District Historic/Associative Value

- Its narrow lot and its construction as part of a pair of properties reflect the development of the district by small scale builders who built out short stretches of houses.

District Social/Community Value (when applicable)

APPENDIX D - Statements of Contribution



| | |
|-------------------------------|---|
| Address | 296 SEATON ST |
| Period | pre - 1890 |
| Type | Detached |
| Architectural Style(s) | Victorian/Romanesque Revival |
| Stores | 2 |
| Character Area | Residential Area |
| Materials | brick, stucco and wood exterior cladding, and asphalt shingle roofing |

Statement of Contribution

This property was built as a detached house, drawing from both Victorian and Romanesque Revival styles. It contributes to the physical integrity of the district through its residential character, architectural detailing and design characteristics.

District Design/Physical Value

- Its 2 storey facade contributes to the low rise predominant scale of the district.
- Its fine grain built form with a slightly raised entrance and setback from the street, with a front yard contributes to a well defined and articulated streetwall.
- Its combination of Victorian and Romanesque Revival styles is evidenced by the recessed entrance, the arched window with soldier brick voussoir on the first storey and the geometric pattern of the wood details at the front gable.

District Contextual Value

- Its architectural style, its materiality and its scale contribute to the cohesiveness of the neighbourhood's built form.
- It supports the residential character of the long north-south streets.

District Historic/Associative Value

- Its siting and orientation translate the importance of the north-south blocks with their I-configuration laneways that evolved from the original Park Lot orientations and their subdivision over time.

District Social/Community Value (when applicable)

APPENDIX D - Statements of Contribution

| | |
|-------------------------------|---|
| Address | 297 SEATON ST |
| Period | pre - 1890 |
| Type | Abutting |
| Architectural Style(s) | Victorian |
| Storeys | 2.5 |
| Character Area | Residential Area |
| Materials | Brick exterior cladding and asphalt shingle roofing |



Statement of Contribution

This Victorian residential property was built as part of a pair of houses (295-297) that share the same architectural form and details. It contributes to the physical integrity of the district through its residential character, architectural detailing and design characteristics.

District Design/Physical Value

- Its 2 ½ storey façade contributes to the low rise predominant scale of the district.
- Its fine grain built form with a slightly raised entrance and setback from the street, with a front yard contributes to a well defined and articulated streetwall.
- Its Victorian style is evidenced by the cross gabled roof; protruding front gable bay; segmental arch bay opening at first storey with segmental arch stained glass transom window at first storey, flat headed stained glass transom window above front door, segmental arch windows at second storey and front gable; brick voussoirs and wood sills.

District Contextual Value

- Its architectural style, its materiality and its scale contribute to the cohesiveness of the neighbourhood's built form..
- It supports the residential character of the long north-south streets.

District Historic/Associative Value

- Its narrow lot and its construction as part of a pair of properties reflect the development of the district by small scale builders who built out short stretches of houses.

District Social/Community Value (when applicable)

APPENDIX D - Statements of Contribution

Address 298 SEATON ST

Period pre - 1890

Type Abutting

Architectural Style(s) Victorian

Storeys 2.5

Character Area Residential Area

Materials Brick exterior cladding, decorative
woodwork, and asphalt shingle roofing



Statement of Contribution

This property was built as part of a pair of houses (298-300) that were designed as mirror images of each other. This property is a representative example of the Victorian style. It contributes to the physical integrity of the district through its residential character, architectural detailing and design characteristics.

District Design/Physical Value

- Its 2 ½ storey façade contributes to the low rise predominant scale of the district.
- Its fine grain built form with a slightly raised entrance and setback from the street, with a front yard contributes to a well defined and articulated streetwall.
- The Victorian style is evidenced by the protruding bay and gable massing; the brick detailing such as soldier brick voussoirs, the lintel and sill courses; the segmental arch bay windows and otherwise flat headed doors and windows. The style is also supported by the decorative wood elements such as the triangular wood panels, ornamented gable panel and brackets at front gable.

District Contextual Value

- Its architectural style, its materiality and its scale contribute to the cohesiveness of the neighbourhood's built form.
- It supports the residential character of the long north-south streets.

District Historic/Associative Value

- Its narrow lot and its construction as part of a pair of properties reflect the development of the district by small scale builders who built out short stretches of houses.

District Social/Community Value (when applicable)

APPENDIX D - Statements of Contribution

| | |
|-------------------------------|---|
| Address | 299 SEATON ST |
| Period | pre - 1884 |
| Type | Abutting |
| Architectural Style(s) | Edwardian |
| Storeys | 2.5 |
| Character Area | Residential Area |
| Materials | Brick and wood exterior cladding, and asphalt shingle roofing |



Statement of Contribution

This property was built as part of a pair of houses (299-301) that share the same architectural form and details. The residential building is representative example of Edwardian architectural style. It contributes to the physical integrity of the district through its residential character, architectural detailing and design characteristics.

District Design/Physical Value

- Its 2 ½ storey façade contributes to the low rise predominant scale of the district.
- Its fine grain built form with a slightly raised entrance and setback from the street, with a front yard contributes to a well defined and articulated streetwall.
- Its Edwardian style is evidenced by the flat headed window at first storey, flat headed bay windows in wood casing at second storey, flat headed dormer windows; wood columns and architrave at front porch.

District Contextual Value

- Its architectural style, its materiality and its scale contribute to the cohesiveness of the neighbourhood's built form.
- It supports the residential character of the long north-south streets.

District Historic/Associative Value

- Its narrow lot and its construction as part of a pair of properties reflect the development of the district by small scale builders who built out short stretches of houses.

District Social/Community Value (when applicable)

APPENDIX D - Statements of Contribution

Address 300 SEATON ST

Period pre - 1890

Type Abutting

Architectural Style(s) Victorian

Storeys 2.5

Character Area Residential Area

Materials Brick exterior cladding, decorative
woodwork, and asphalt shingle roofing



Statement of Contribution

This property was built as part of a pair of houses (298-300) that were designed as mirror images of each other. This property is a representative example of the Victorian style. It contributes to the physical integrity of the district through its residential character, architectural detailing and design characteristics.

District Design/Physical Value

- Its 2 ½ storey façade contributes to the low rise predominant scale of the district.
- Its fine grain built form with a slightly raised entrance and setback from the street, with a front yard contributes to a well defined and articulated streetwall.
- The Victorian style is evidenced by the protruding bay and gable massing; the brick detailing such as soldier brick voussoirs, the lintel and sill courses; the segmental arch bay windows and otherwise flat headed doors and windows. The style is also supported by the decorative wood elements such as the triangular wood panels, ornamented gable panel and brackets at front gable.

District Contextual Value

- Its architectural style, its materiality and its scale contribute to the cohesiveness of the neighbourhood's built form.
- It supports the residential character of the long north-south streets.

District Historic/Associative Value

- Its narrow lot and its construction as part of a pair of properties reflect the development of the district by small scale builders who built out short stretches of houses.

District Social/Community Value (when applicable)

APPENDIX D - Statements of Contribution

| | |
|-------------------------------|---|
| Address | 301 SEATON ST |
| Period | pre - 1884 |
| Type | Abutting |
| Architectural Style(s) | Edwardian |
| Storeys | 2.5 |
| Character Area | Residential Area |
| Materials | Brick and wood exterior cladding, and asphalt shingle roofing |



Statement of Contribution

This property was built as part of a pair of houses (299-301) that share the same architectural form and details. The residential building is representative example of Edwardian architectural style. It contributes to the physical integrity of the district through its residential character, architectural detailing and design characteristics.

District Design/Physical Value

- Its 2 ½ storey façade contributes to the low rise predominant scale of the district.
- Its fine grain built form with a slightly raised entrance and setback from the street, with a front yard contributes to a well defined and articulated streetwall.
- Its Edwardian style is evidenced by the flat headed window at first storey, flat headed bay windows in wood casing at second storey, flat headed dormer windows; wood columns and architrave at front porch.

District Contextual Value

- Its architectural style, its materiality and its scale contribute to the cohesiveness of the neighbourhood's built form.
- It supports the residential character of the long north-south streets.

District Historic/Associative Value

- Its narrow lot and its construction as part of a pair of properties reflect the development of the district by small scale builders who built out short stretches of houses.

District Social/Community Value (when applicable)

APPENDIX D - Statements of Contribution

Address 306 SEATON ST

Period 1863

Type Detached

Architectural Style(s) Victorian

Storeys 2

Character Area Residential Area

Materials Stucco exterior cladding, decorative
woodwork, and asphalt shingle roofing



Statement of Contribution

Built for Reverend William McClure in 1863, this detached Victorian residential property illustrates the development of the area in the mid-19th century. This house is sited on a large lot with a side yard and large front setback, which contrasts the narrow lots and row houses built in the following decades that are typical of the area. The McClure house was listed by the City of Toronto in 1981. This property contributes to the physical integrity of the area through its residential character, original architectural details and design characteristics.

District Design/Physical Value

- Its 2 storey façade contributes to the low rise predominant scale of the district.
- Its fine grain built form with a slightly raised entrance and setback from the street, with a front yard contributes to a well defined and articulated streetwall.
- Its Victorian style is evidenced by its protruding front gable bay and protruding entrance; the flat headed windows with wood casings and sills; as well as architectural enrichments such as the floating window hood above the bay windows; the running trim and brackets under eaves, and running trim at bay window roofline and gable drop. The landscaping with trees and shrubbery contributes to the picturesque ideals associated with Victorian residential architecture in suburban and rural settings.

District Contextual Value

- Its architectural style, its materiality and its scale contribute to the cohesiveness of the neighbourhood's built form.
- It supports the residential character of the long north-south streets.

District Historic/Associative Value

- The property's construction for a prominent member of the community reflects the historic socio-economic diversity of Cabbagetown Southwest.
- The property has maintained its large lot which contributes to the understanding of how lots were later subdivided and built out as short stretches of row houses.

District Social/Community Value (when applicable)

APPENDIX D - Statements of Contribution

Address 307 SEATON ST

Period pre - 1889

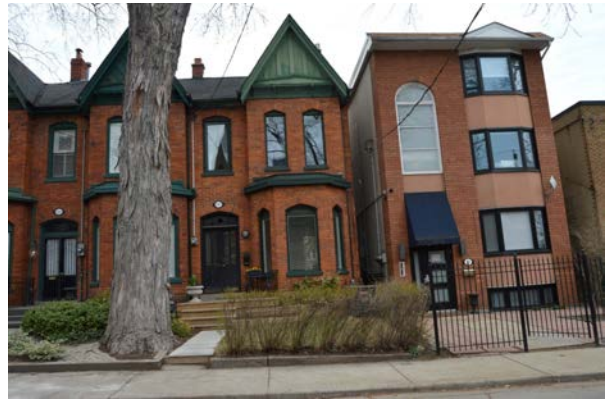
Type Row

Architectural Style(s) Victorian

Storeys 2

Character Area Residential Area

Materials Brick exterior cladding, decorative
woodwork, and asphalt shingle roofing



Statement of Contribution

This residential building is part of a series of three Victorian row houses (307-311) on Seaton street. It contributes to the physical integrity of the district through its residential character, original architectural detailing and design characteristics.

District Design/Physical Value

- Its 2 storey façade contributes to the low rise predominant scale of the district.
- Its fine grain built form with a slightly raised entrance and setback from the street, with a front yard contributes to a well defined and articulated streetwall.
- Its Victorian style is evidenced by the cross gabled roof; protruding front gable bay; segmental pointed arch windows at first storey, pentagon stained glass transom window above front door, pointed segmental arch windows at second storey; soldier brick lintel course at first storey and soldier brick voussoirs. The style is also supported by the surviving woodwork such as the half timbering with wood brackets at front gable.

District Contextual Value

- Its architectural style, its materiality and its scale contribute to the cohesiveness of the neighbourhood's built form.
- It supports the residential character of the long north-south streets.

District Historic/Associative Value

- Its narrow lot and its construction as part of a series of properties reflect the development of the district by small scale builders who built out short stretches of houses.

District Social/Community Value (when applicable)

APPENDIX D - Statements of Contribution

Address 309 SEATON ST

Period pre - 1889

Type Row

Architectural Style(s) Victorian

Storeys 2

Character Area Residential Area

Materials Brick exterior cladding, decorative
woodwork, and asphalt shingle roofing



Statement of Contribution

This residential building is part of a series of three Victorian row houses (307-311) on Seaton street. It contributes to the physical integrity of the district through its residential character, original architectural detailing and design characteristics.

District Design/Physical Value

- Its 2 storey façade contributes to the low rise predominant scale of the district.
- Its fine grain built form with a slightly raised entrance and setback from the street, with a front yard contributes to a well defined and articulated streetwall.
- Its Victorian style is evidenced by the cross gabled roof; protruding front gable bay; segmental pointed arch windows at first storey, pentagon stained glass transom window above front door, pointed segmental arch windows at second storey; soldier brick lintel course at first storey and soldier brick voussoirs. The style is also supported by the surviving woodwork such as the half timbering with wood brackets at front gable.

District Contextual Value

- Its architectural style, its materiality and its scale contribute to the cohesiveness of the neighbourhood's built form.
- It supports the residential character of the long north-south streets.

District Historic/Associative Value

- Its narrow lot and its construction as part of a series of properties reflect the development of the district by small scale builders who built out short stretches of houses.

District Social/Community Value (when applicable)

APPENDIX D - Statements of Contribution

Address 311 SEATON ST

Period pre - 1889

Type Row

Architectural Style(s) Victorian

Storeys 2

Character Area Residential Area

Materials Brick exterior cladding, decorative
woodwork, and asphalt shingle roofing



Statement of Contribution

This residential building is part of a series of three Victorian row houses (307-311) on Seaton street. It contributes to the physical integrity of the district through its residential character, original architectural detailing and design characteristics.

District Design/Physical Value

- Its 2 storey façade contributes to the low rise predominant scale of the district.
- Its fine grain built form with a slightly raised entrance and setback from the street, with a front yard contributes to a well defined and articulated streetwall.
- Its Victorian style is evidenced by the cross gabled roof; protruding front gable bay; segmental pointed arch windows at first storey, pentagon stained glass transom window above front door, pointed segmental arch windows at second storey; soldier brick lintel course at first storey and soldier brick voussoirs. The style is also supported by the surviving woodwork such as the half timbering with wood brackets at front gable.

District Contextual Value

- Its architectural style, its materiality and its scale contribute to the cohesiveness of the neighbourhood's built form.
- It supports the residential character of the long north-south streets.

District Historic/Associative Value

- Its narrow lot and its construction as part of a series of properties reflect the development of the district by small scale builders who built out short stretches of houses.

District Social/Community Value (when applicable)

APPENDIX D - Statements of Contribution

Address 312 SEATON ST

Period pre - 1890

Type Detached

Architectural Style(s) Victorian

Storeys 2.5

Character Area Residential Area

Materials Brick and wood exterior cladding, decorative woodwork, and asphalt shingle roofing



Statement of Contribution

This residential property was built as a detached house in the Victorian style. It contributes to the physical integrity of the district through its residential character, original architectural detailing and design characteristics.

District Design/Physical Value

- Its 2 ½ storey façade contributes to the low rise predominant scale of the district.
- Its fine grain built form with a slightly raised entrance and setback from the street, with a front yard contributes to a well defined and articulated streetwall.
- Its Victorian style is evidenced by its protruding front gable bay, decorative brickwork including lintel and sill banding, dogtooth insets between first and second storey. Furthermore, the flat headed tall narrow windows with sills and lintels at first accentuate the verticality of the façade. Finally, wooden decorative elements such as stained glass window above at the second storey; the floating porch hood with brackets, and decorative wood brackets, gable base and fascia on the front gable contribute to the expression of the Victorian style.

District Contextual Value

- Its architectural style, its materiality and its scale contribute to the cohesiveness of the neighbourhood's built form.
- It supports the residential character of the long north-south streets.

District Historic/Associative Value

- Its narrow lot reflects the subdivision and development of the district by small scale builders.

District Social/Community Value (when applicable)

APPENDIX D - Statements of Contribution

Address 313 SEATON ST

Period pre - 1884

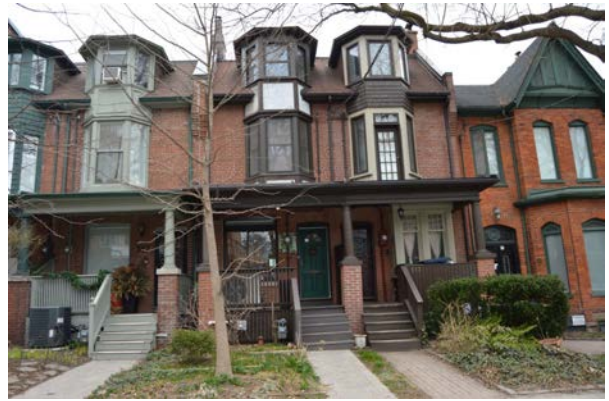
Type Row

Architectural Style(s) Edwardian

Storeys 3

Character Area Residential Area

Materials Brick, stucco and wood exterior cladding, decorative woodwork, and asphalt shingle roofing



Statement of Contribution

This residential property is a part of a series of four Edwardian row houses (313-319). It contributes to the physical integrity of the district through its residential character, original architectural detailing and design characteristics.

District Design/Physical Value

- Its 3 storey façade contributes to the low rise predominant scale of the district.
- Its fine grain built form with a slightly raised entrance and setback from the street, with a front yard contributes to a well defined and articulated streetwall.
- Its Edwardian style is evidenced by the flat headed bay windows and segmental arch door in wood casing at first storey, flat headed bay windows and door at second storey, flat headed dormer windows, brick voussoir above front door, brick piers with corbelling at sides; wood columns with architrave at front porch.

District Contextual Value

- Its architectural style, its materiality and its scale contribute to the cohesiveness of the neighbourhood's built form.
- It supports the residential character of the long north-south streets.

District Historic/Associative Value

- Its narrow lot and its construction as part of a series of properties reflect the development of the district by small scale builders who built out short stretches of houses.

District Social/Community Value (when applicable)

APPENDIX D - Statements of Contribution

| | |
|-------------------------------|--|
| Address | 314 SEATON ST |
| Period | pre - 1869 |
| Type | Detached |
| Architectural Style(s) | Vernacular |
| Storeys | 2 |
| Character Area | Residential Area |
| Materials | Brick and wood exterior cladding, decorative woodwork, and asphalt shingle roofing |



Statement of Contribution

This property was built as a detached house in the Vernacular It contributes to the physical integrity of the district through its residential character, original architectural detailing and design characteristics.

District Design/Physical Value

- Its 2 storey building and the setback contribute to the low rise predominant scale of the district.
- Its fine grain built form with a slightly raised entrance and setback from the street, with a front yard contributes to a well defined and articulated streetwall.
- Its Vernacular style blending architectural elements from the period, including a protruding bay window at the second storey with decorative wood panels and the half timbering on the pediment at front porch.

District Contextual Value

- Its architectural style, its materiality and its scale contribute to the cohesiveness of the neighbourhood's built form.
- It supports the residential character of the long north-south streets.

District Historic/Associative Value

- Its narrow lot reflects the subdivision and development of the district by small scale builders.

District Social/Community Value (when applicable)

APPENDIX D - Statements of Contribution

Address 315 SEATON ST

Period pre - 1884

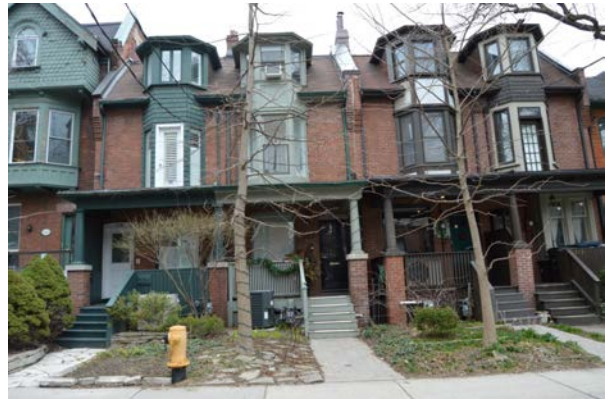
Type Row

Architectural Style(s) Edwardian

Storeys 3

Character Area Residential Area

Materials Brick, stucco and wood exterior cladding, decorative woodwork, and asphalt shingle roofing



Statement of Contribution

This residential property is a part of a series of four Edwardian row houses (313-319). It contributes to the physical integrity of the district through its residential character, original architectural detailing and design characteristics.

District Design/Physical Value

- Its 3 storey façade contributes to the low rise predominant scale of the district.
- Its fine grain built form with a slightly raised entrance and setback from the street, with a front yard contributes to a well defined and articulated streetwall.
- Its Edwardian style is evidenced by the segmental arch window with brick voussoir at first storey, flat headed bay windows in wood casing at second storey, flat headed dormer windows in wood casing; brick voussoir above front door, brick piers with corbelling at sides; wood columns with architrave at front porch.

District Contextual Value

- Its architectural style, its materiality and its scale contribute to the cohesiveness of the neighbourhood's built form.
- It supports the residential character of the long north-south streets.

District Historic/Associative Value

- Its narrow lot and its construction as part of a series of properties reflect the development of the district by small scale builders who built out short stretches of houses.

District Social/Community Value (when applicable)

APPENDIX D - Statements of Contribution

Address 317 SEATON ST

Period pre - 1884

Type Row

Architectural Style(s) Edwardian

Storeys 3

Character Area Residential Area

Materials Brick, stucco and wood exterior cladding, decorative woodwork, and asphalt shingle roofing



Statement of Contribution

This residential property is a part of a series of four Edwardian row houses (313-319). It contributes to the physical integrity of the district through its residential character, original architectural detailing and design characteristics.

District Design/Physical Value

- Its 3 storey façade contributes to the low rise predominant scale of the district.
- Its fine grain built form with a slightly raised entrance and setback from the street, with a front yard contributes to a well defined and articulated streetwall.
- Its Edwardian style is evidenced by the segmental arch window with brick voussoir at first storey, flat headed bay windows in wood casing at second storey, flat headed dormer windows in wood casing; brick voussoir above front door, brick piers with corbelling at sides; wood columns with architrave at front porch.

District Contextual Value

- Its architectural style, its materiality and its scale contribute to the cohesiveness of the neighbourhood's built form.
- It supports the residential character of the long north-south streets.

District Historic/Associative Value

- Its narrow lot and its construction as part of a series of properties reflect the development of the district by small scale builders who built out short stretches of houses.

District Social/Community Value (when applicable)

APPENDIX D - Statements of Contribution

Address 319 SEATON ST

Period pre - 1884

Type Row

Architectural Style(s) Edwardian

Storeys 3

Character Area Residential Area

Materials Brick, stucco and wood exterior cladding, decorative woodwork, and asphalt shingle roofing



Statement of Contribution

This residential property is a part of a series of four Edwardian row houses (313-319). It contributes to the physical integrity of the district through its residential character, original architectural detailing and design characteristics.

District Design/Physical Value

- Its 3 storey façade contributes to the low rise predominant scale of the district.
- Its fine grain built form with a slightly raised entrance and setback from the street, with a front yard contributes to a well defined and articulated streetwall.
- Its Edwardian style is evidenced by the segmental arch window with brick voussoir at first storey, flat headed bay windows and door in wood casing at second storey, flat headed dormer windows in wood casing; brick voussoir above front door, brick piers with corbelling at sides; wood columns with architrave at front porch.

District Contextual Value

- Its architectural style, its materiality and its scale contribute to the cohesiveness of the neighbourhood's built form.
- It supports the residential character of the long north-south streets.

District Historic/Associative Value

- Its narrow lot and its construction as part of a series of properties reflect the development of the district by small scale builders who built out short stretches of houses.

District Social/Community Value (when applicable)

APPENDIX D - Statements of Contribution

Address 321 SEATON ST

Period pre - 1890

Type Row

Architectural Style(s) Queen Anne Revival

Storeys 3

Character Area Residential Area

Materials Brick and wood exterior cladding, decorative woodwork, and asphalt shingle roofing



Statement of Contribution

This property is part of an ensemble of three row houses (321-325) built in the Queen Anne Revival style. It contributes to the physical integrity of the district through its residential character, original architectural detailing and design characteristics.

District Design/Physical Value

- Its 3 storey façade contributes to the low rise predominant scale of the district.
- Its fine grain built form with a slightly raised entrance and setback from the street, with a front yard contributes to a well defined and articulated streetwall.
- Its Queen Anne Revival style is evidenced by the protruding front gable; flat headed windows with stone sills and lintels at first storey and basement, flat headed bay windows in wood casing at second storey and round arch window in wood casing at front gable. The wood details such as the simple decorative wood fascia support the style.

District Contextual Value

- Its architectural style, its materiality and its scale contribute to the cohesiveness of the neighbourhood's built form.
- It supports the residential character of the long north-south streets.

District Historic/Associative Value

- Its narrow lot and its construction as part of a series of properties reflect the development of the district by small scale builders who built out short stretches of houses.

District Social/Community Value (when applicable)

APPENDIX D - Statements of Contribution

Address 323 SEATON ST

Period pre - 1890

Type Row

Architectural Style(s) Queen Anne Revival

Storeys 3

Character Area Residential Area

Materials Brick and wood exterior cladding, decorative woodwork, and asphalt shingle roofing



Statement of Contribution

This property is part of an ensemble of three row houses (321-325) built in the Queen Anne Revival style. It contributes to the physical integrity of the district through its residential character, original architectural detailing and design characteristics.

District Design/Physical Value

- Its 3 storey façade contributes to the low rise predominant scale of the district.
- Its fine grain built form with a slightly raised entrance and setback from the street, with a front yard contributes to a well defined and articulated streetwall.
- Its Queen Anne Revival style is evidenced by the protruding front gable; flat headed windows with stone sills and lintels at first storey and basement, flat headed bay windows in wood casing at second storey and round arch window with wood panel in wood casing at front gable. The wood details such as the simple decorative wood fascia support the style.

District Contextual Value

- Its architectural style, its materiality and its scale contribute to the cohesiveness of the neighbourhood's built form.
- It supports the residential character of the long north-south streets.

District Historic/Associative Value

- Its narrow lot and its construction as part of a series of properties reflect the development of the district by small scale builders who built out short stretches of houses.

District Social/Community Value (when applicable)

APPENDIX D - Statements of Contribution

Address 325 SEATON ST

Period pre - 1890

Type Row

Architectural Style(s) Queen Anne Revival

Storeys 3

Character Area Residential Area

Materials Brick and wood exterior cladding, decorative woodwork, and asphalt shingle roofing



Statement of Contribution

This property is part of an ensemble of three row houses (321-325) built in the Queen Anne Revival style. It contributes to the physical integrity of the district through its residential character, original architectural detailing and design characteristics.

District Design/Physical Value

- Its 3 storey façade contributes to the low rise predominant scale of the district.
- Its fine grain built form with a slightly raised entrance and setback from the street, with a front yard contributes to a well defined and articulated streetwall.
- Its Queen Anne Revival style is evidenced by the protruding front gable; flat headed windows with stone sills and lintels at first storey and basement, flat headed bay windows in wood casing at second storey and round arch window with wood panel in wood casing at front gable. The wood details such as the simple decorative wood fascia support the style.

District Contextual Value

- Its architectural style, its materiality and its scale contribute to the cohesiveness of the neighbourhood's built form.
- It supports the residential character of the long north-south streets.

District Historic/Associative Value

- Its narrow lot and its construction as part of a series of properties reflect the development of the district by small scale builders who built out short stretches of houses.

District Social/Community Value (when applicable)

APPENDIX D - Statements of Contribution

Address 326 SEATON ST

Period pre - 1884

Type Row

Architectural Style(s) Second Empire

Storeys 3

Character Area Residential Area

Materials Brick exterior cladding, decorative
woodwork, and slate shingle roofing



Statement of Contribution

This property was built as part of a series of five Second Empire row houses (326-334) composed of alternating mirror image variants of the same model. It contributes to the physical integrity of the district through its residential character, original architectural detailing and design characteristics.

District Design/Physical Value

- Its 3 storey façade contributes to the low rise predominant scale of the district.
- Its fine grain built form with a slightly raised entrance and setback from the street, with a front yard contributes to a well defined and articulated streetwall.
- Its Second Empire style is evidenced by the details in the brick masonry, such as dogtooth insets between first and second storey bow windows, the stone lintels on the bow windows and the keystone and soldier brick voussoir over the window above the front entrance; wood details such as brackets under roof eave and the bracketed dormer windows; and finally the mansard roof with fish scale banding in slate.

District Contextual Value

- Its architectural style, its materiality and its scale contribute to the cohesiveness of the neighbourhood's built form.
- It supports the residential character of the long north-south streets.

District Historic/Associative Value

- Its narrow lot and its construction as part of a series of properties reflect the development of the district by small scale builders who built out short stretches of houses.

District Social/Community Value (when applicable)

APPENDIX D - Statements of Contribution

Address 327 SEATON ST

Period pre - 1884

Type Abutting

Architectural Style(s) Vernacular

Storeys 3

Character Area Residential Area

Materials Brick exterior cladding and asphalt shingle roofing



Statement of Contribution

This residential building was built in the Vernacular architectural style. It incorporates elements of styles of its time while responding to local conditions and available resources. It also contributes to the physical integrity of the district through its residential character and design characteristics.

District Design/Physical Value

- Its 3 storey façade and front setback contribute to the low rise predominant scale of the district and to a well defined and articulated streetwall.
- Its Vernacular style is evidenced by flat headed bay windows with flat headed stained glass transom windows, segmental arch windows at second storey and flat headed windows with wood sills at third storey; and the brick voussoirs.

District Contextual Value

- Its materiality and its scale contribute to the cohesiveness of the neighbourhood's built form.
- It supports the residential character of the long north-south streets.

District Historic/Associative Value

- Its narrow lot reflects the subdivision and development of the district by small scale builders.

District Social/Community Value (when applicable)

APPENDIX D - Statements of Contribution

Address 328 SEATON ST

Period pre - 1884

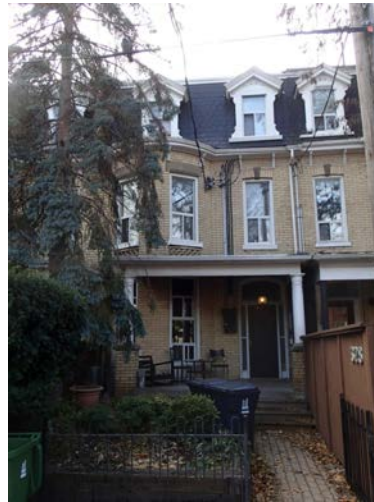
Type Row

Architectural Style(s) Second Empire

Storeys 3

Character Area Residential Area

Materials Brick exterior cladding, decorative
woodwork, and slate shingle roofing



Statement of Contribution

This property was built as part of a series of five Second Empire row houses (326-334) composed of alternating mirror image variants of the same model. It contributes to the physical integrity of the district through its residential character, original architectural detailing and design characteristics.

District Design/Physical Value

- Its 3 storey façade contributes to the low rise predominant scale of the district.
- Its fine grain built form with a slightly raised entrance and setback from the street, with a front yard contributes to a well defined and articulated streetwall.
- Its Second Empire style is evidenced by the details in the brick masonry, such as dogtooth insets between first and second storey bow windows, the stone lintels on the bow windows and the keystone and soldier brick voussoir over the window above the front entrance; wood details such as brackets under roof eave and the bracketed dormer windows; and finally the mansard roof with fish scale banding in slate.

District Contextual Value

- Its materiality and its scale contribute to the cohesiveness of the neighbourhood's built form.
- It supports the residential character of the long north-south streets.

District Historic/Associative Value

- Its narrow lot and its construction as part of a series of properties reflect the development of the district by small scale builders who built out short stretches of houses.

District Social/Community Value (when applicable)

APPENDIX D - Statements of Contribution

Address 330 SEATON ST

Period pre - 1884

Type Row

Architectural Style(s) Second Empire

Storeys 3

Character Area Residential Area

Materials Brick exterior cladding, decorative
woodwork, and slate shingle roofing



Statement of Contribution

This property was built as part of a series of five Second Empire row houses (326-334) composed of alternating mirror image variants of the same model. It contributes to the physical integrity of the district through its residential character, original architectural detailing and design characteristics.

District Design/Physical Value

- Its 3 storey façade contributes to the low rise predominant scale of the district.
- Its fine grain built form with a slightly raised entrance and setback from the street, with a front yard contributes to a well defined and articulated streetwall.
- Its Second Empire style is evidenced by the details in the brick masonry, such as dogtooth insets between first and second storey bow windows, the stone lintels on the bow windows, the keystone and soldier brick voussoir over the window above the front entrance; wood details such as brackets under roof eave and the bracketed dormer windows; and finally the mansard roof with fish scale banding in slate.

District Contextual Value

- Its architectural style, its materiality and its scale contribute to the cohesiveness of the neighbourhood's built form.
- It supports the residential character of the long north-south streets.

District Historic/Associative Value

- Its narrow lot and its construction as part of a series of properties reflect the development of the district by small scale builders who built out short stretches of houses.

District Social/Community Value (when applicable)

APPENDIX D - Statements of Contribution

Address 331 SEATON ST

Period pre - 1884

Type Abutting

Architectural Style(s) Victorian

Storeys 1.5

Character Area Residential Area

Materials Stucco exterior cladding, decorative
woodwork, and asphalt shingle roofing



Statement of Contribution

This residential building is representative example of the Victorian style. It contributes to the physical integrity of the district through its residential character, original architectural detailing and design characteristics.

District Design/Physical Value

- Its 1 ½ storey façade and front setback contribute to the low rise predominant scale of the district and to a well defined and articulated streetwall.
- Its Victorian style is evidenced by the cross gabled roof; and segmental arch windows including the segmental arch transom window above front door. The style is also supported by the surviving woodwork such as the Lancet window in wood casing in front gable and wood running trim with gable drop at front gable.

District Contextual Value

- Its architectural style, its materiality and its scale contribute to the cohesiveness of the neighbourhood's built form.
- It supports the residential character of the long north-south streets.

District Historic/Associative Value

- Its narrow lot and its construction as part of a pair of properties reflect the development of the district by small scale builders who built out short stretches of houses.

District Social/Community Value (when applicable)

APPENDIX D - Statements of Contribution

Address 332 SEATON ST

Period pre - 1884

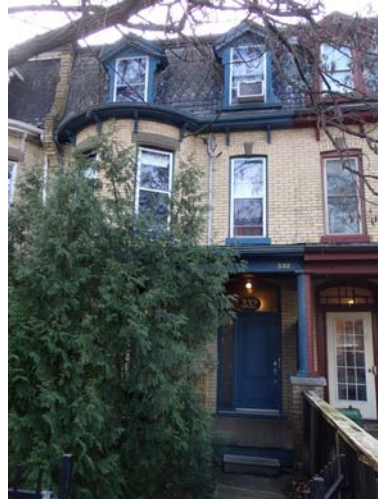
Type Row

Architectural Style(s) Second Empire

Storeys 3

Character Area Residential Area

Materials Brick exterior cladding, decorative
woodwork, and slate shingle roofing



Statement of Contribution

This property was built as part of a series of five Second Empire row houses (326-334) composed of alternating mirror image variants of the same model. It contributes to the physical integrity of the district through its residential character, original architectural detailing and design characteristics.

District Design/Physical Value

- Its 3 storey façade contributes to the low rise predominant scale of the district.
- Its fine grain built form with a slightly raised entrance and setback from the street, with a front yard contributes to a well defined and articulated streetwall.
- Its Second Empire style is evidenced by the details in the brick masonry, such as dogtooth insets between first and second storey bow windows, the stone lintels on the bow windows and the keystone and soldier brick voussoir over the window above the front entrance; wood details such as brackets under roof eave and the bracketed dormer windows; and finally the mansard roof with fish scale banding in slate.

District Contextual Value

- Its architectural style, its materiality and its scale contribute to the cohesiveness of the neighbourhood's built form.
- It supports the residential character of the long north-south streets.

District Historic/Associative Value

- Its narrow lot and its construction as part of a series of properties reflect the development of the district by small scale builders who built out short stretches of houses.

District Social/Community Value (when applicable)

APPENDIX D - Statements of Contribution

Address 333 SEATON ST

Period pre - 1884

Type Abutting

Architectural Style(s) Vernacular

Storeys 1

Character Area Residential Area

Materials Stone veneer exterior cladding,
decorative woodwork, and asphalt
shingle roofing



Statement of Contribution

This residential property was built in the Vernacular architectural style. It incorporates elements of architectural styles of its time while responding to local conditions and available resources. It also contributes to the physical integrity of the district through its residential character and design characteristics.

District Design/Physical Value

- Its 1 storey façade and front setback contribute to the low rise predominant scale of the district and to a well defined and articulated streetwall.
- Its Vernacular style is evidenced by the flat headed windows with wood casing, flat headed transom window above front door, and wood casing at front door.

District Contextual Value

- Its scale contribute to the cohesiveness of the neighbourhood's built form.
- It supports the residential character of the long north-south streets.

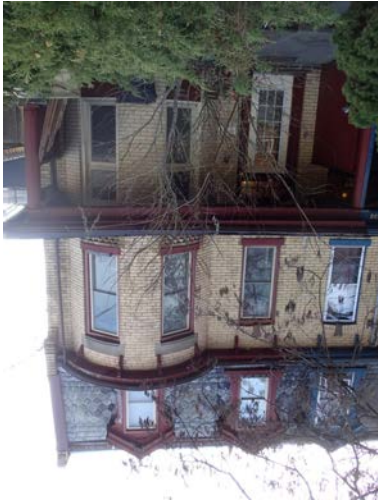
District Historic/Associative Value

- Its narrow lot and its construction as part of a pair of properties reflect the development of the district by small scale builders who built out short stretches of houses.

District Social/Community Value (when applicable)

APPENDIX D - Statements of Contribution

| | |
|------------------------|--|
| Address | 334 SEATON ST |
| Period | pre - 1884 |
| Type | Row |
| Architectural Style(s) | Second Empire |
| Stores | 3 |
| Character Area | Residential Area |
| Materials | Brick exterior cladding, decorative woodwork, and slate shingle roofing |



Statement of Contribution

This property was built as part of a series of five Second Empire row houses (326-334) composed of alternating mirror image variants of the same model. It contributes to the physical integrity of the district through its residential character, original architectural detailing and design characteristics.

District Design/Physical Value

- Its 3 storey facade contributes to the low rise predominant scale of the district.
- Its fine grain built form with a slightly raised entrance and setback from the street, with a front yard contributes to a well defined and articulated streetwall.
- Its Second Empire style is evidenced by the details in the brick masonry, such as dogtooth insets between first and second storey bow windows, the stone lintels on the bow windows and the keystone and soldier brick voussoir over the window above the front entrance; wood details such as brackets under roof eave, the bracketed dormer windows; and finally the mansard roof with fish scale banding in slate.

District Contextual Value

- Its architectural style, its materiality and its scale contribute to the cohesiveness of the neighbourhood's built form.
- It supports the residential character of the long north-south streets.

District Historic/Associative Value

- Its narrow lot and its construction as part of a series of properties reflect the development of the district by small scale builders who built out short stretches of houses.

District Social/Community Value (when applicable)