



# PB12.4

## 309 Cherry Street – Notice of Intention to Designate a Property under Part IV, Section 29 of the Ontario Heritage Act

## PB12.4 309 Cherry Street



This location map is for information purposes only; the exact boundaries of the property are not shown. The red line marks the location of the site, and the blue arrows mark the locations of the relevant buildings on site. Note: oil tanks pictured are no longer extant.



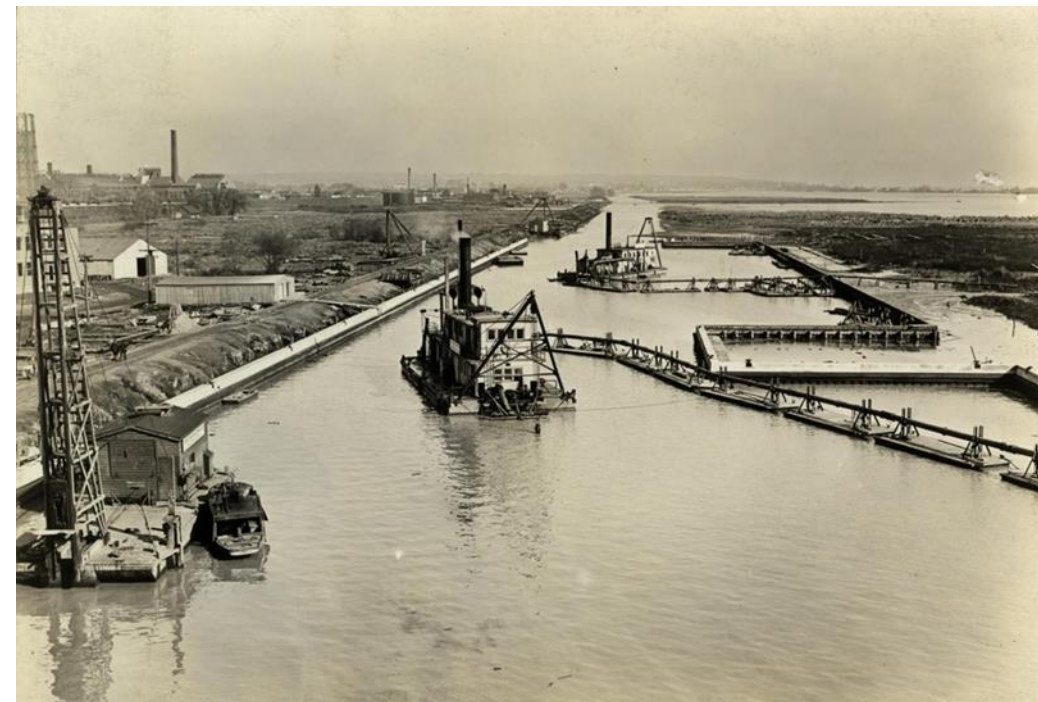
At left: the northwest and west elevations of the former Bank of Montreal building.

At right: the north and west elevations of the former Canadian Oil Co. warehouse (Heritage Planning, 2023).

## PB12.4 309 Cherry Street



'Plan of the City of Toronto', City Engineers Office, 1894 (University of Toronto <https://maps.library.utoronto.ca/dvhhmp/Scans/NMC97370.jpg>). Red square indicates approximate location of subject property for illustrative purposes only, annotated by Heritage Planning.



"Keating Channel, looking east during construction." 1914 (Toronto Library Archives).



"View looking southeast, showing Keating channel at left." 1914 (Toronto Library Archives). Approximate future site of subject property indicated by red arrow.



Keating Channel present day, looking east (Heritage Planning, 2023).

## PB12.4 309 Cherry Street



Panorama of Cherry and Villiers Street in 1918, from Stinson's *Heritage of the Port Industrial District: A report for the Toronto Harbour Commissioners*. Vol 1. 1990. Red arrow indicates future site of the bank building.



Bank of Montreal under construction in 1920, from "Heritage Impact Assessment: 309 Cherry Street, Toronto." ERA Architects, Inc. 2023.

## PB12.4 309 Cherry Street



"Bank of Montreal." Construction 14, no. 12 (Toronto: H. Gagnier, Ltd, 1921): 371-372.



Former Bank of Montreal, northwest elevation (Heritage Planning, 2023).



Detail of main entrance portico pediment and entablature (Heritage Planning, 2023).



Building Records, Toronto Department of Buildings, Permit No.30992 (1919), showing the extended northwest elevation on Cherry and Villiers streets (City of Toronto Archives).

PB12.4  
309 Cherry Street



"View looking southeast from approx. Cherry & Villiers St." 1930 (Toronto Library Archives).



"Cherry St., looking south from Keating Channel bridge." c.1929 (Toronto Library Archives).

PB12.4  
309 Cherry Street



"Oil and coal refineries and ship channel, Cherry Street" c.1930 (City of Toronto Archives, Fonds 1244, Item 1440). Photo shows the presence of both oil tanks and coal heaps; the Canadian Oil Companies warehouse is not built at this time.

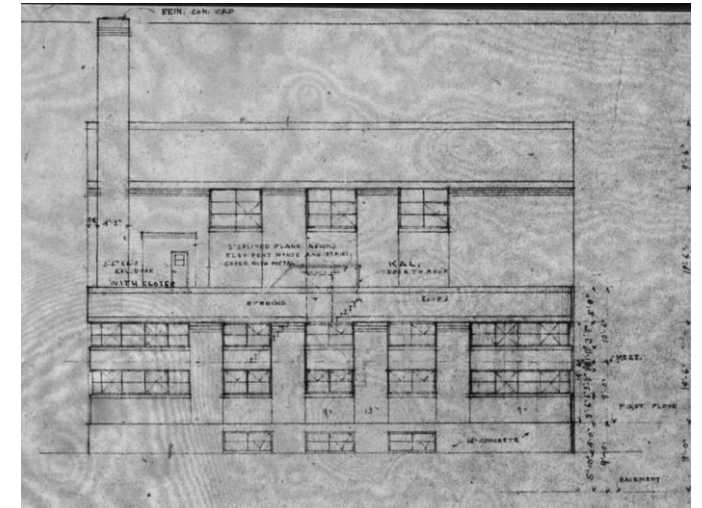
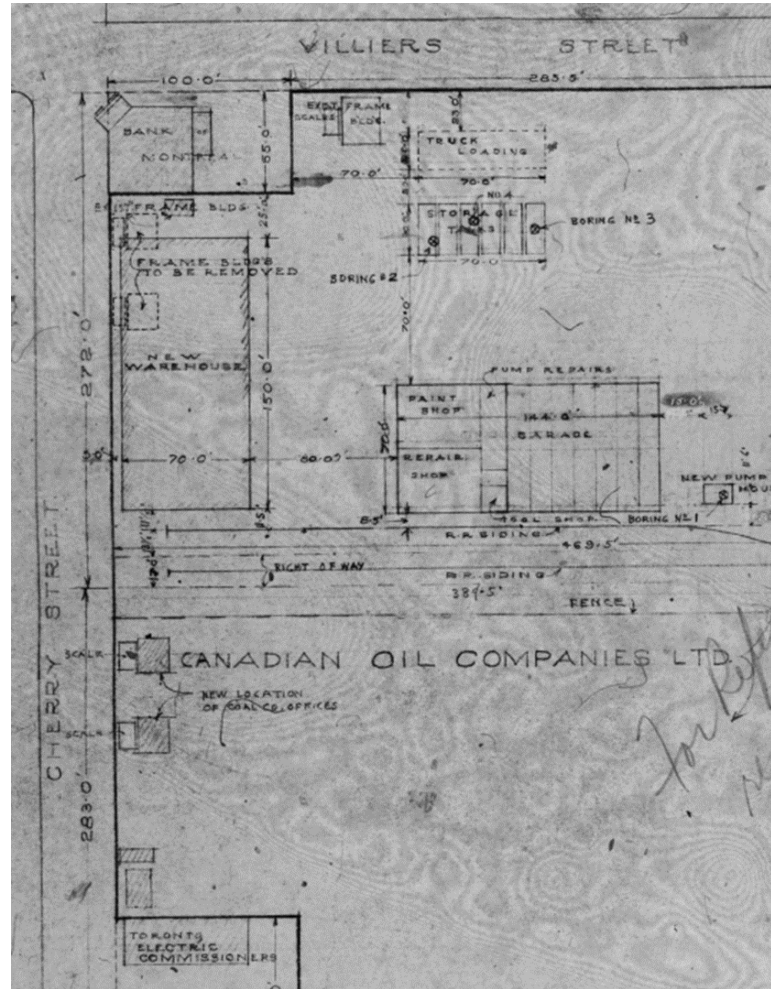
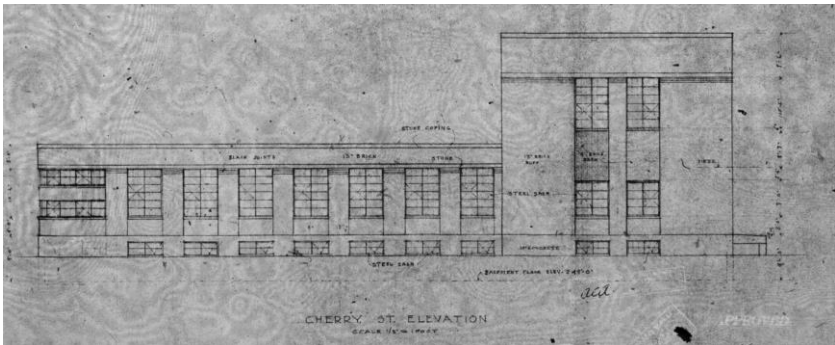


Aerial photo of 309 Cherry Street from 1947 (City of Toronto Archives). Construction of oil tanks is underway at the south end of the property, and there are no longer any coal heaps located to the west of the subject property. The Canadian Oil Companies warehouse has been built by this time.

# PB12.4 309 Cherry Street



Former Canadian Oil Co. warehouse, west elevation (Heritage Planning, 2023).



Detail of Art Moderne design elements on the northwest corner (Heritage Planning, 2023).

All drawings on this slide from: Building Records, Toronto and East York, Building Records Files No. 70968 (1941) showing from left to right: west elevation, site plan with new warehouse footprint, and north elevation of N. A. Armstrong's designs for the Canadian Oil Companies warehouse.



## PB12.4 309 Cherry Street



"Cherry Street, looking south to Villiers Street" c.1980-1998 (City of Toronto Archives).



Intersection of Cherry and Villiers streets.



Toronto Hydro Substation and former Dominion Bank at Cherry and Commissioners streets.



Former Bank of Montreal's west elevation, looking east and showing space between buildings.



East elevations of buildings looking southwest.



Looking east down Villiers Street showing surrounding context (Heritage Planning, 2023).