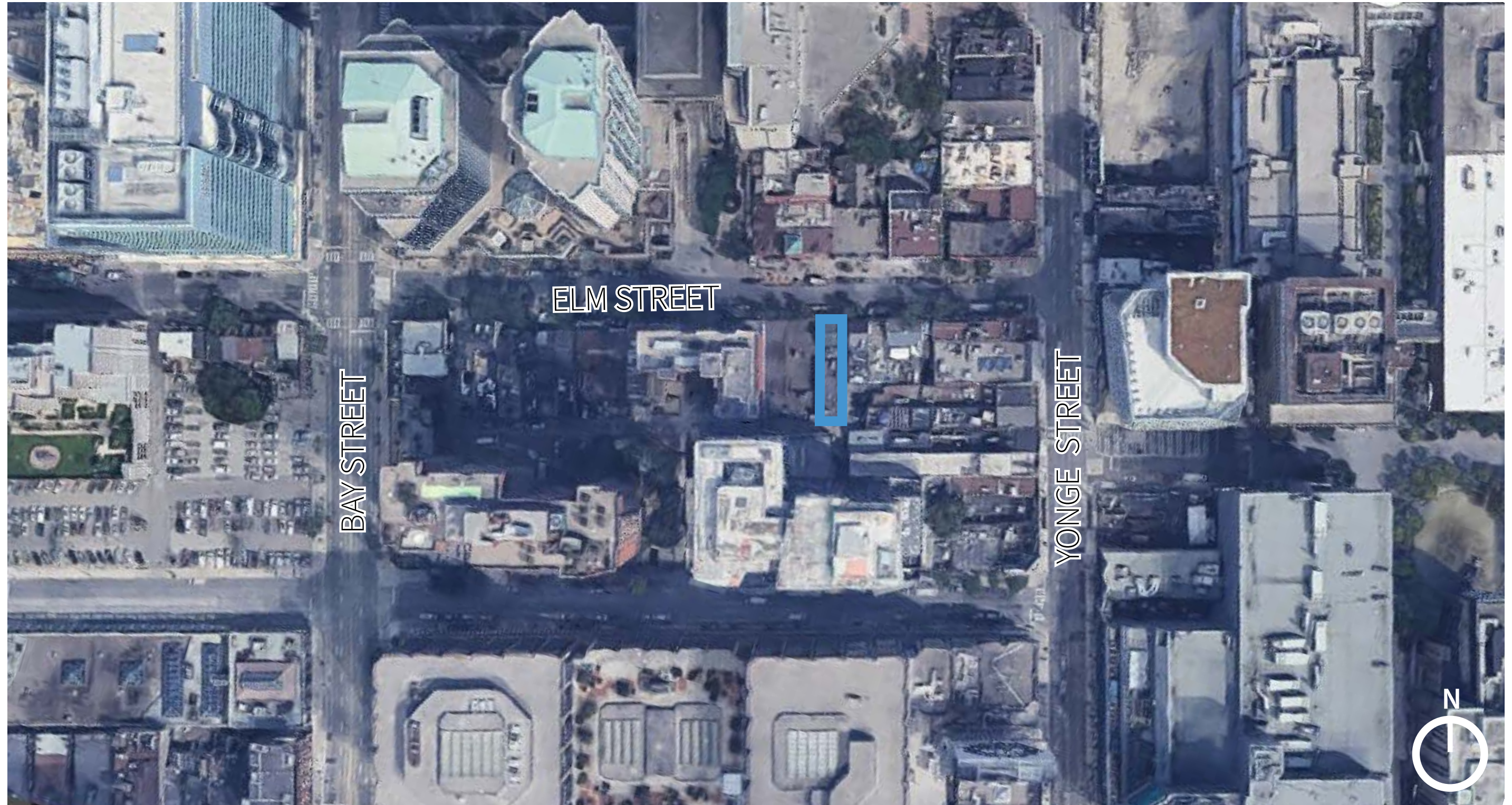


CONTEXT



STREET CONTEXT



EXISTING CONDITION



Use change:

- Residential to mixed use, incl. commercial

Building modifications:

- Structure
- Primary elevation: glazed storefront, entries, upper portion likely rebuilt after 1922, storefront altered, cornice detailing and keystones removed
- Openings

Condition:

- Generally in poor condition