

WATERFRONTToronto

To: City of Toronto (“City”)

From: Toronto Waterfront Revitalization Corporation (“Waterfront Toronto”)

Date: May 17, 2023

Re: Cycle Detour Maintenance Plan

Background

Waterfront Toronto established temporary cycling detours through the Port Lands area as part of the delivery of the Port Lands Flood Protection (PLFP) and Lake Shore Boulevard East Bridge and Public Realm (LSBE) projects. As shown in the plan below, the detours are located within an area with significant construction activities.

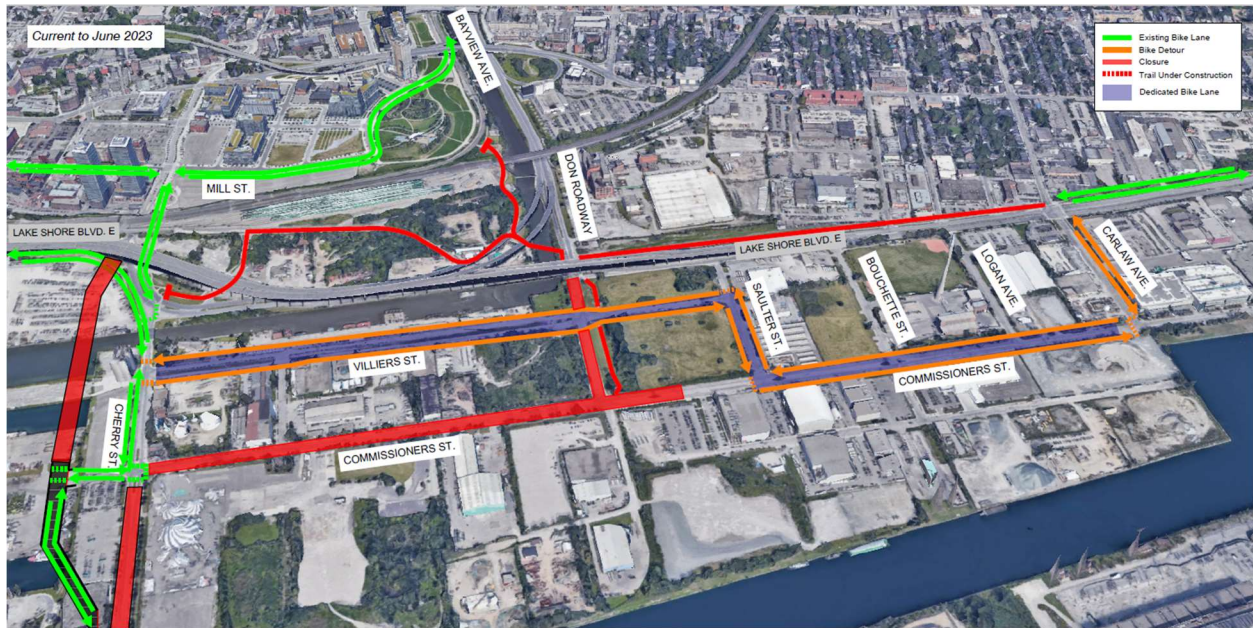


Figure 1- Current Cycling Detour Configuration (orange - detour; red - closure; green - open cycling infrastructure)

It is noted that significant changes to the detour configuration will occur with the opening of Commissioners Street and Cherry Street and the closure of Villiers Street, scheduled for early October 2023. Effective October, Villiers Street will be closed from Saulters Street to just east of Munitions Street and will no longer form part of the cycle detour (see figure 2).

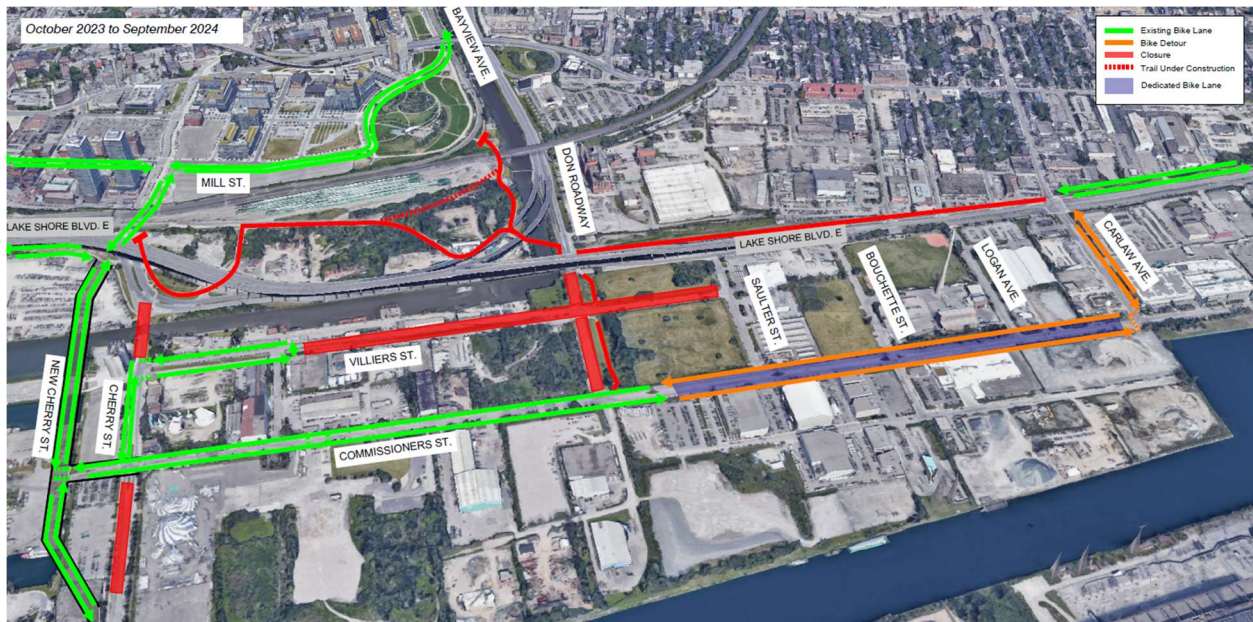


Figure 22 Cycling Detour Configuration October 2023 - September 2024 (orange - detour; red - closure; green - open cycling infrastructure)

To ensure the cleanliness and safety of the public areas, EllisDon, the Construction Manager retained by Waterfront Toronto, developed a comprehensive cleaning and maintenance plan. The purpose of this memorandum is to confirm the commitment of Waterfront Toronto to undertake through the Construction Manager a comprehensive and ongoing maintenance program for the cycle detour for the duration of the PLFP and LSBE projects.

Maintenance Plan

Waterfront Toronto, through their Construction Manager EllisDon, commits to the following maintenance plan for the cycle detour through the PLFP:

- Comprehensive cleanup of the roads, sidewalks, and cycling infrastructure was completed in March 2023 to remove the debris that accumulated in the area during the winter.
- Construction Manager to undertake daily inspections of cycling, pedestrian, and vehicular infrastructure and direct the cleaning efforts of their subcontractor.
- Subcontractor resources assigned to cleaning and maintenance: Full time staff of 4-5 people, 1-foreman, 1-operator and 2-3 laborer's assigned full time, 10 hours per day, 5 days per week.
- Cleaning involves the full-time utilization of a dedicated sidewalk sweeper as well as a skid steer with brush attachment.
- Labour will utilize hand tools and bucket equipped skid steer.
- Removal of ponded water with brush attachment on skid steer will be completed following a rain event. If necessary, a vacuum truck will be utilized.
- Hazard and warning signs and attenuators will be cleaned as required.

- Construction Manager will repair potholes in asphalt along cycle tracks as required in consultation with the City and Waterfront Toronto.
- Daily road cleaning and dust suppression with road sweeping and water trucks is ongoing per the Site-Specific Environmental Plan.
- The Construction Manager will undertake and maintain records for a twice daily inspection of the cycle detour with the objective of identifying maintenance deficiencies and safety issues. Working with their subcontractor, a work plan to resolve the deficiencies/issues will be developed with a specific timeframe for remediation.

It is noted that we have just experienced a three-week period of heavy rain. During this period, unfortunately the resources were re-directed from the bike lanes to the Martin Goodman Trail crossing at 256 Cherry Street and general cleaning of Cherry Street between Commissioners and Villiers Streets. EllisDon has committed to undertake a further cleanup specifically on the Villiers Street section, starting Saturday May 13 and continuing through week of May 15 as required. A further inspection of the detour will be undertaken May 22 to determine if further resources, above that described in the routine maintenance plan described above are required.

Waterfront Toronto will continue to monitor the outcomes of the revised cleaning and maintenance protocol and make adjustments based on the feedback from the public and the City, where necessary.