



16-26 Cosburn Avenue

22 June 2023

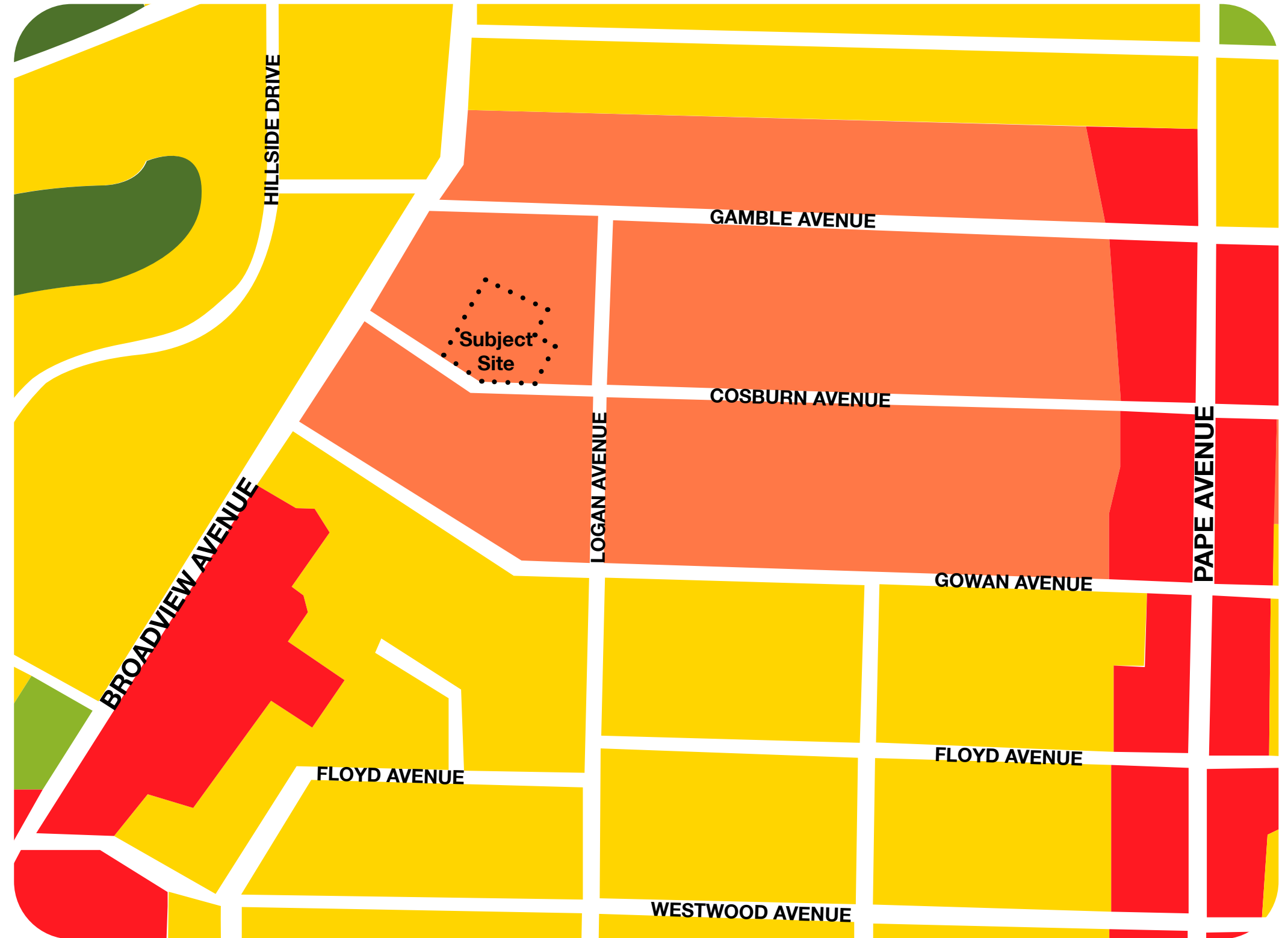
t 416 598 1240
www.bdpquadrangle.com

Quadrangle Architects Limited
The Well, 8 Spadina Avenue, Suite 2100
Toronto, ON M5V 0S8

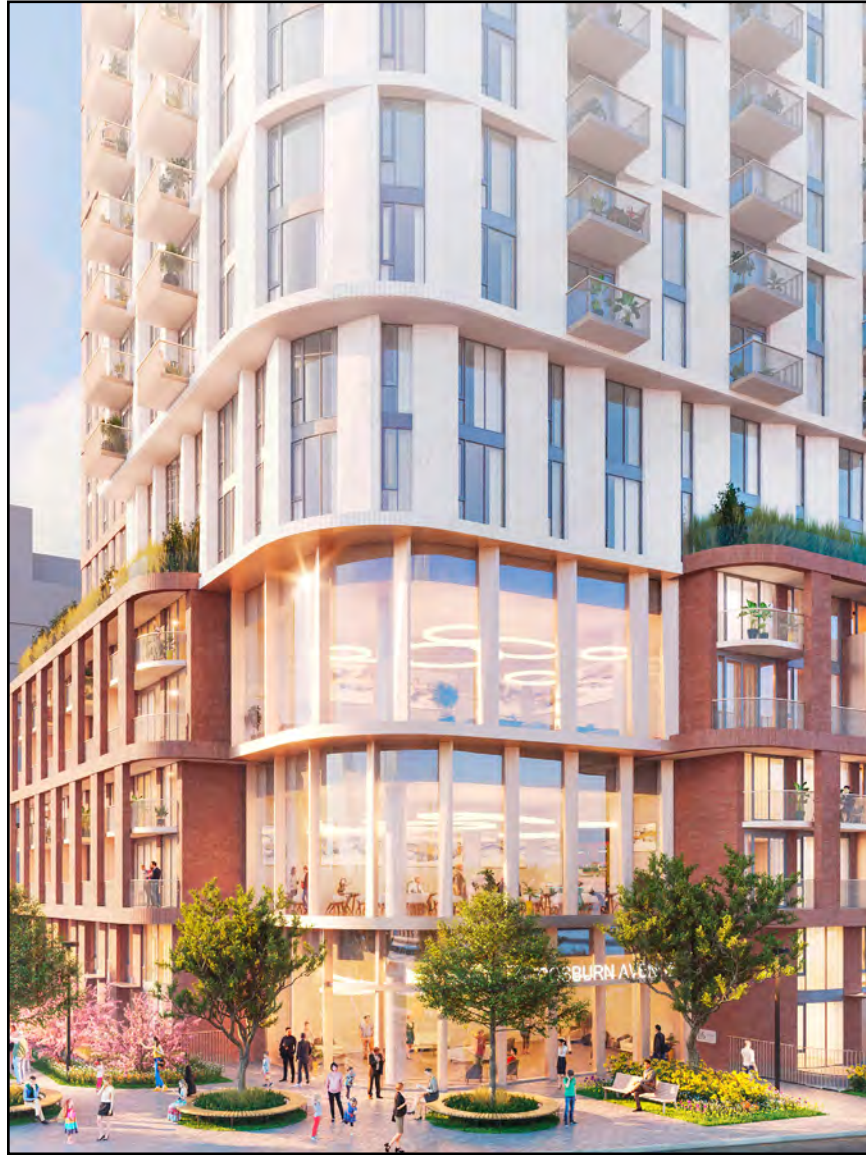
PLANNING CONTEXT | OFFICIAL PLAN LAND USE DESIGNATIONS

Land Use Designation Legend

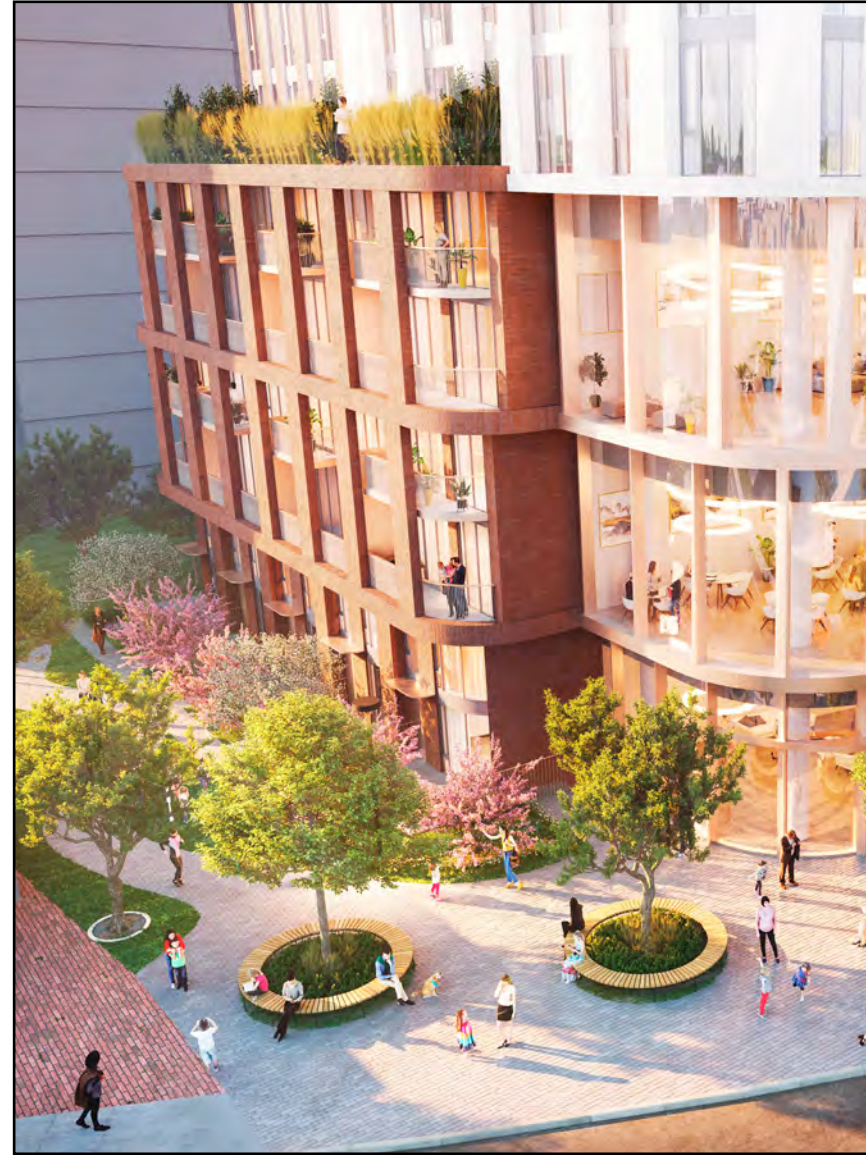
- Neighbourhoods
- Apartment Neighbourhoods
- Mixed Use Areas
- Natural Areas
- Institutional Areas
- Parks
- Other Open Space Areas (including Golf Courses, Cemeteries, Public Utilities)



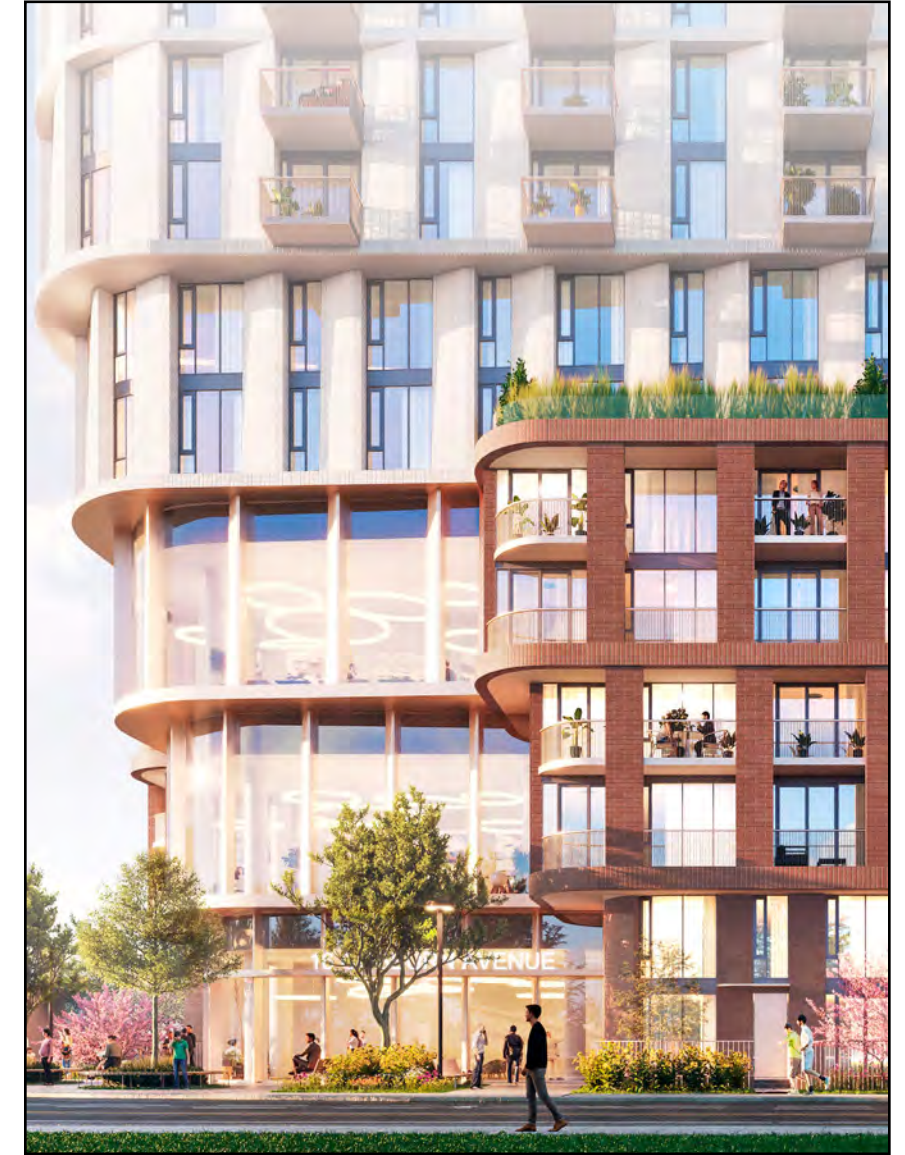
VISION | PROJECT ASPIRATIONS



Delivering much needed housing in proximity to high order transit



Focusing on enhancing the public realm and the community amenities

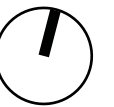
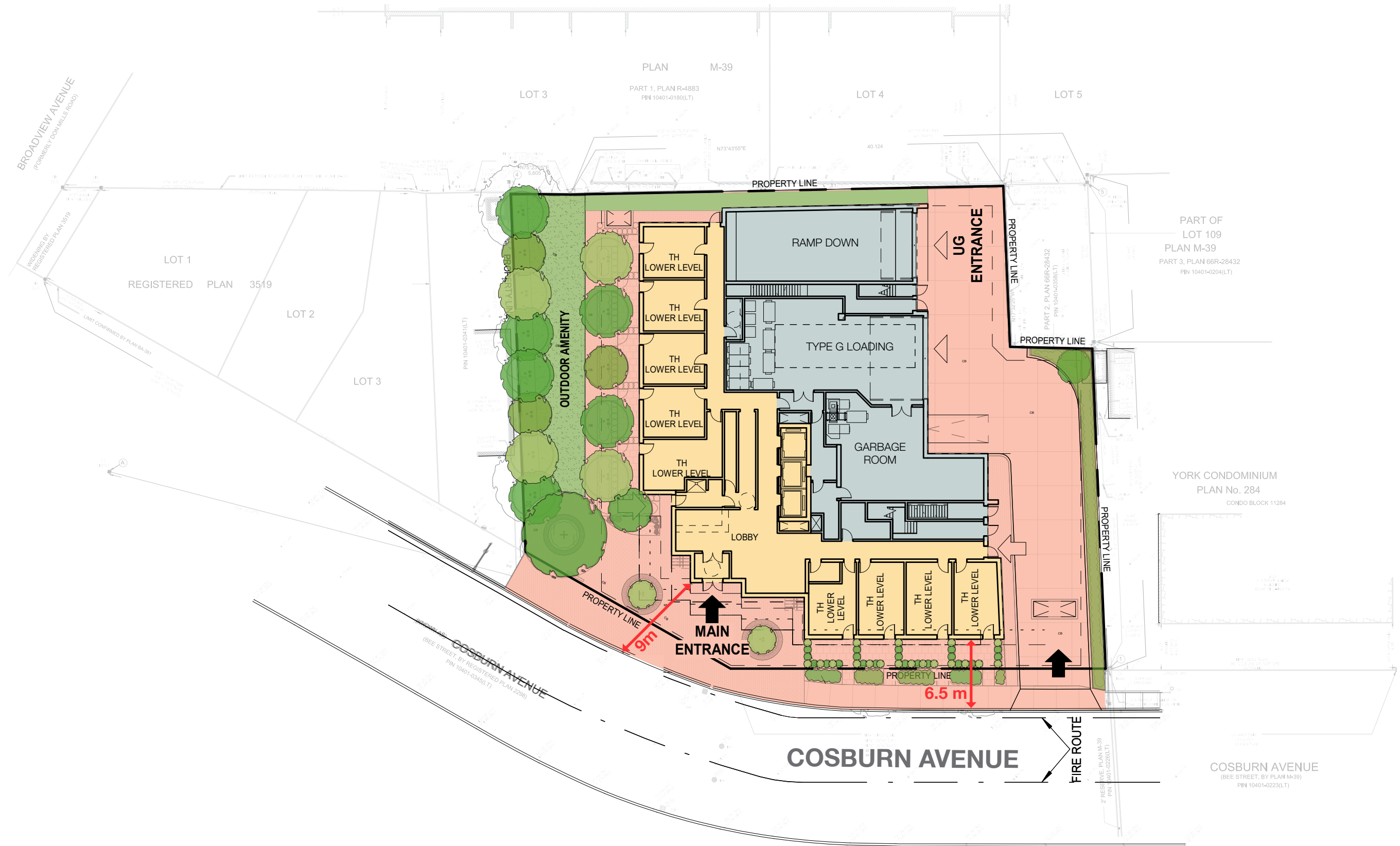


Providing contextual architectural design that is complimentary to the character of the neighborhood

DESIGN | CONTEXT PLAN



DESIGN | GROUND FLOOR PLAN



DESIGN | OPEN SPACE PLAN



Open space on site is ±16% of total site area



VIEW FROM COSBURN AVENUE LOOKING EAST



VIEW OF PUBLIC PARK & POPS



VIEW OF COSBURN AVENUE ELEVATION

KingSett Capital: Affordable Housing Fund

- August 2020 KingSett raised **\$180M** for Affordable Housing Fund

Toronto

- Over 680 affordable housing units in the pipeline
- Three new development projects
- Toronto Open Door Housing program
- Toronto Housing Now program
- CMHC's National Housing Co-Investment Fund
- Signed with non-profits to house their clients

Winnipeg

- 169 existing affordable housing units across 8 buildings
- Provides dignified and attainable rental accommodations
- Prioritize underserved groups.
- Improved safety and security at all properties
- Providing opportunity to residents through partnerships with local employers



Valhalla Village, Toronto
• 217 Affordable Units (Phase 1)
• 494 Total Rental Units (Phase 1)



705 Warden, Toronto
• 250 Affordable Units
• 583 Total Rental Units



Birchmount Green, Toronto
• 220 Affordable Units
• Under Construction