

214-224 Merton Street

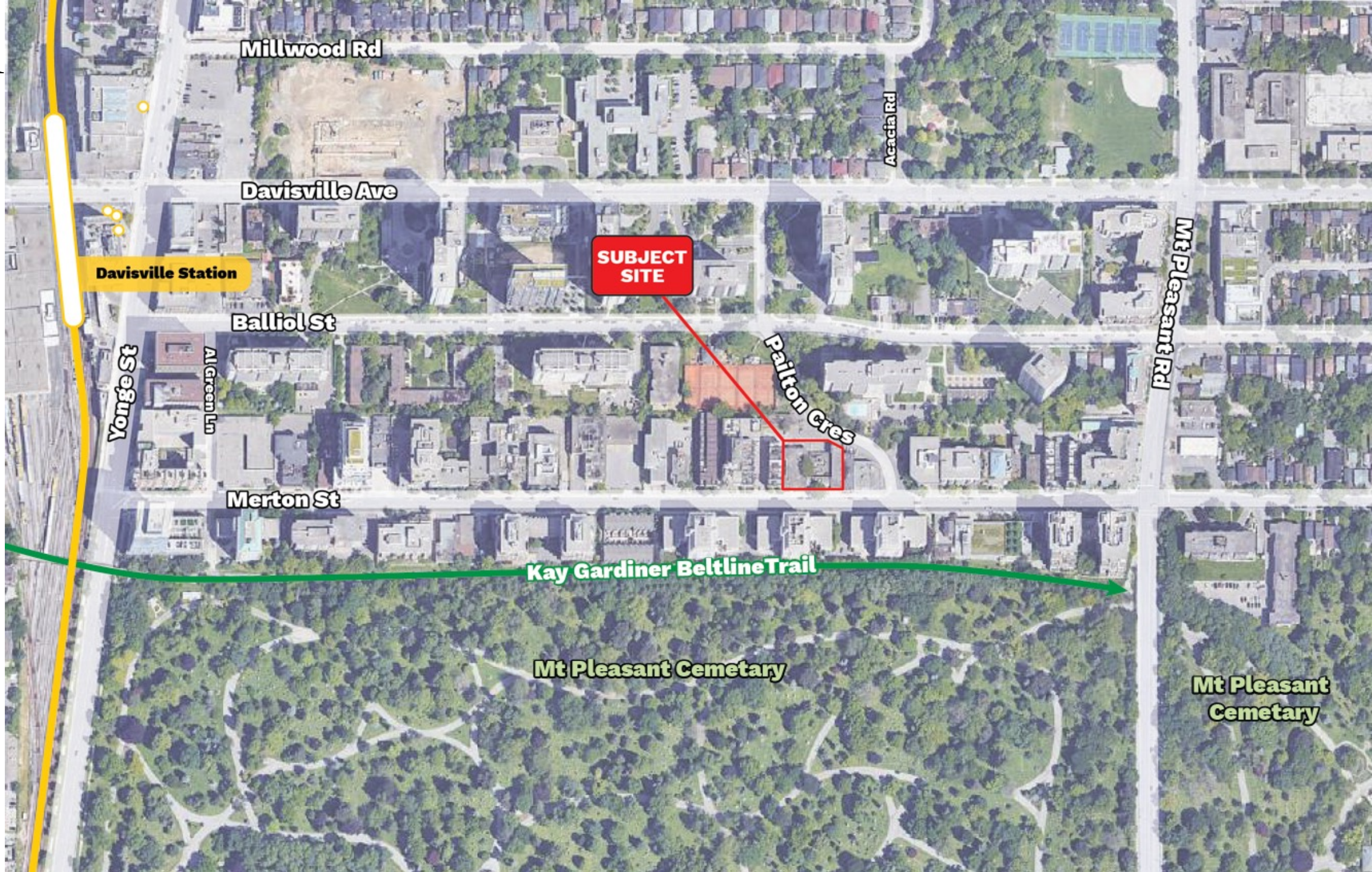




214 MERTON



# Aerial



Millwood Rd

Davisville Ave

Davisville Station

SUBJECT SITE

Balliol St

Yonge St

Al Green Ln

Pailton Cres

Mt Pleasant Rd

Merton St

Kay Gardiner Beltline Trail

Mt Pleasant Cemetary

Mt Pleasant Cemetary

Acacia Rd







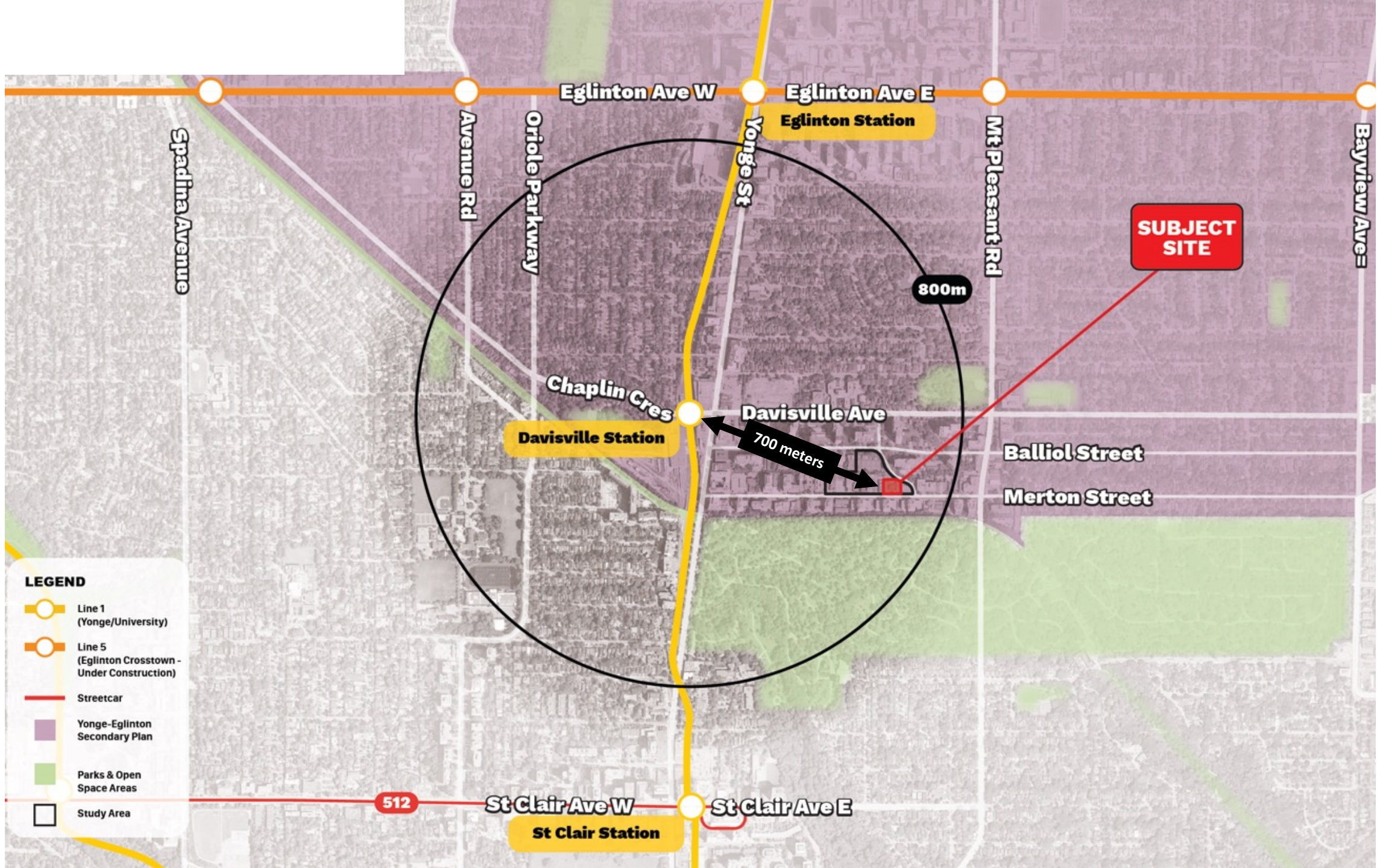
# Height Map

## LEGEND

- \* Under Construction
- \*\* Approved/Not yet built
- \*\*\* Proposed
- 1 - 4 storeys
- 5 - 14 storeys
- 15 - 30 storeys
- 31 - 50 storeys
- 51+ storeys
- Parks
- Other Open Space
- # Subject Site
- # Number of storeys







**LEGEND**

- Line 1 (Yonge/University)
- Line 5 (Eglinton Crosstown - Under Construction)
- Streetcar
- Yonge-Eglinton Secondary Plan
- Parks & Open Space Areas
- Study Area

**SUBJECT SITE**

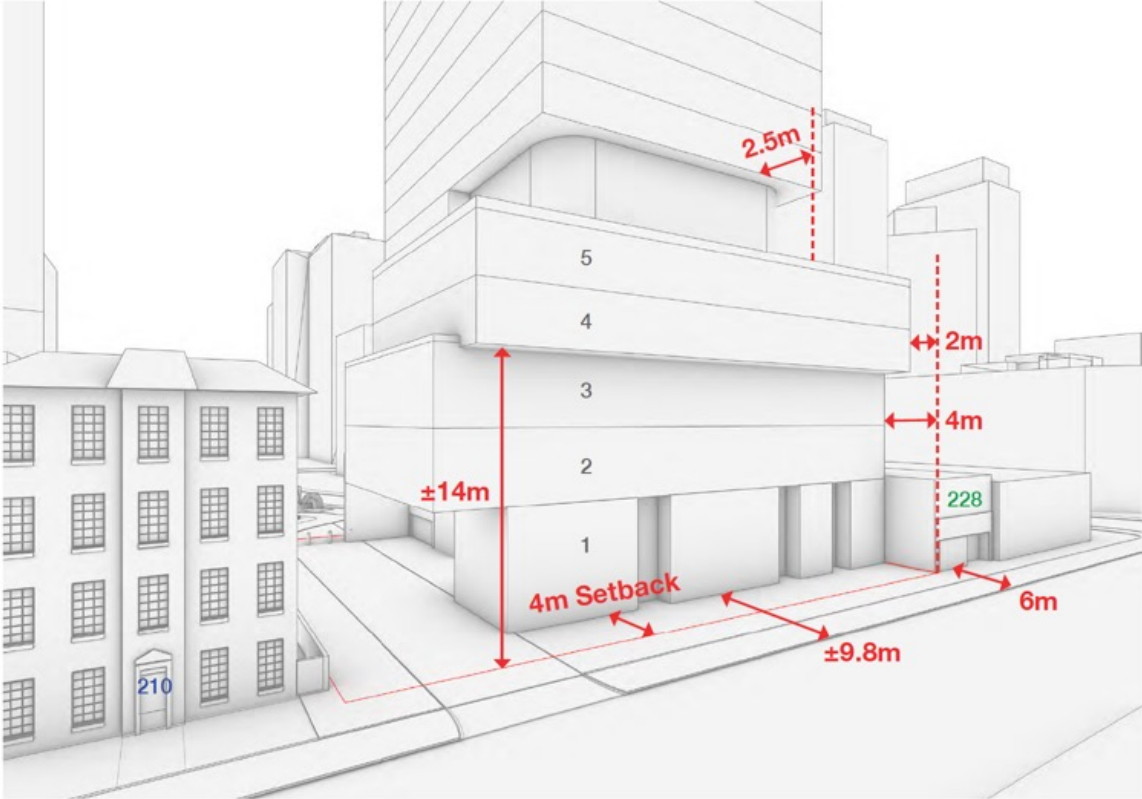
800m

700 meters

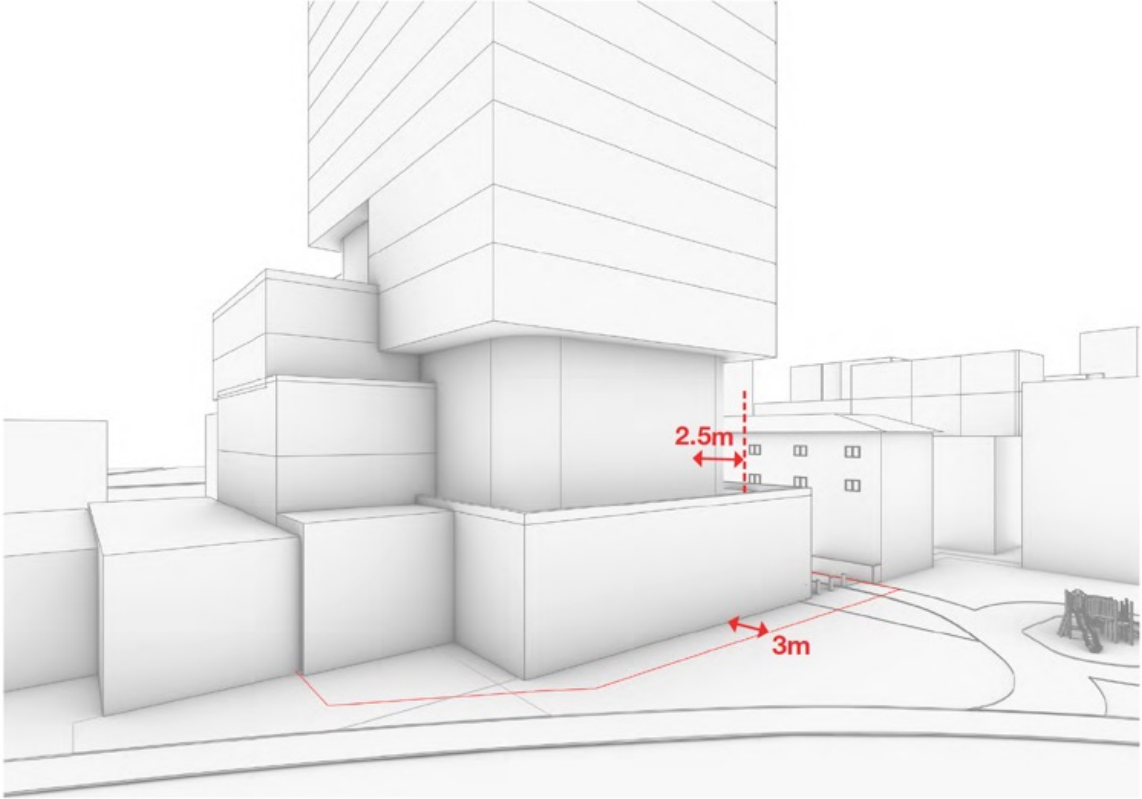
512



# Revised Podium Massing



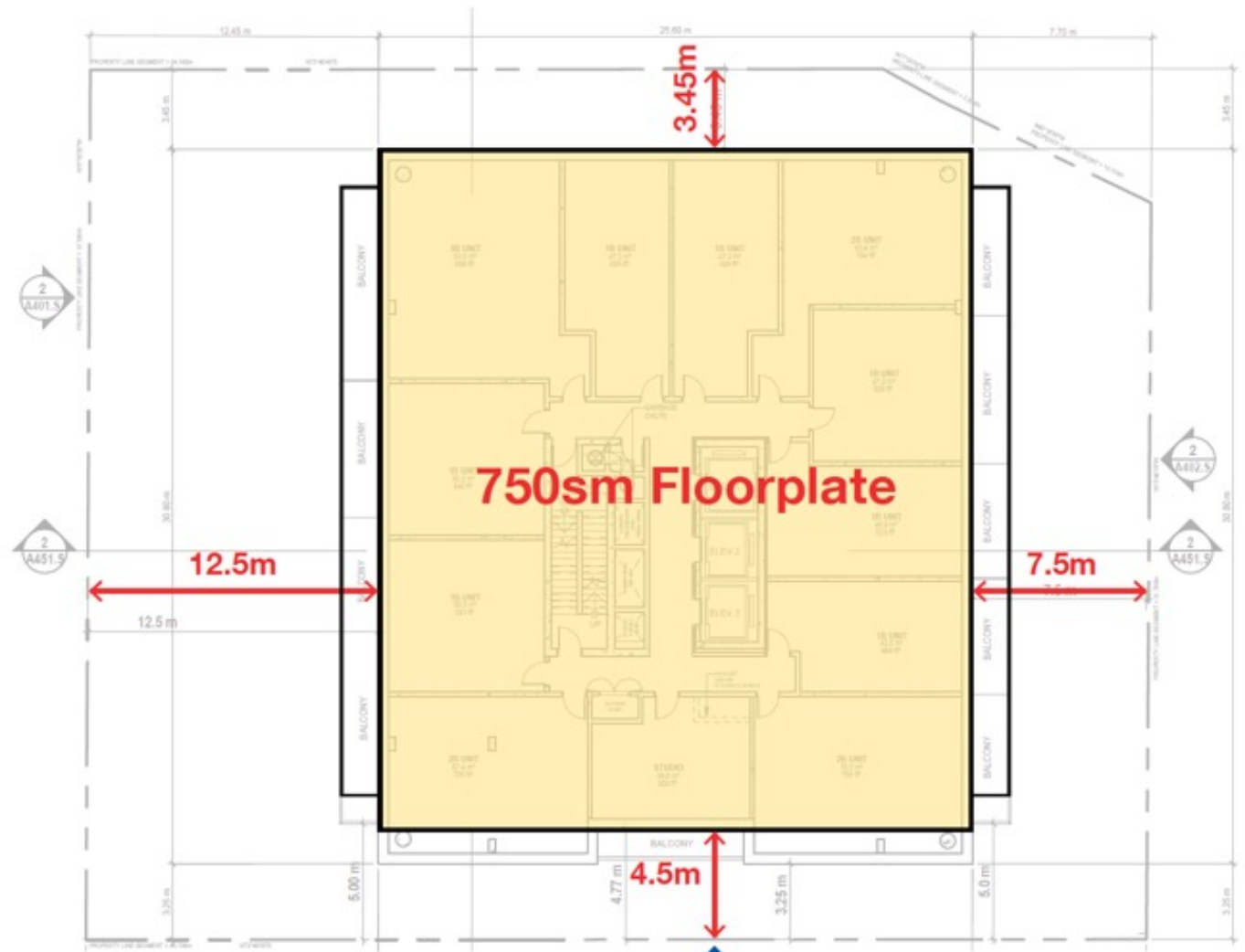
South Elevation (Merton Street)



North Elevation



# Typical Tower Floorplate



Tower setback on south facade has increase from 3.25m to 4.5m resulting in floorplate area reduction from 780sm to 750sm.

**Final agreed upon massing revisions and tower height, as confirmed via email on August 28, 2023**











