

1. Copyright of this drawing is reserved by the Architect. The drawing and all associated documents are an instrument of service by the Architect. The drawing and the information contained therein may not be reproduced in whole or in part without prior written permission of the Architect.
  2. These Contract Documents are the property of the Architect. The Architect bears no responsibility for the interpretation of these documents by the Contractor. Upon written application, the Architect will provide written/graphic clarification or supplementary information regarding the intent of the Contract Documents. The Architect will review Shop Drawings submitted by the Contractor for design conformance only.
  3. Drawings are not to be scaled for construction. The Contractor is to verify all existing conditions and dimensions required to perform the work and report any discrepancies with the Contract Documents to the Architect before commencing any work.
  4. Positions of exposed finished mechanical or electrical devices, fittings, and fixtures are indicated on architectural drawings. The locations shown on the architectural drawings govern over the Mechanical and Electrical drawings. Those items not clearly located will be located as directed by the Architect.
  5. These drawings are not to be used for construction unless noted below as "Issuance: For Construction"
  6. All work is to be carried out in conformance with the Code and Bylaws of the authorities having jurisdiction.
  7. The Architect of these plans and specifications gives no warranty or representation to any party about the constructability of the building(s) represented by them. All contractors or subcontractors must satisfy themselves when bidding and at all times ensure that they can properly construct the work represented by these plans.
  8. Geodetic Elevations provided in these drawings are measured in accordance with the Canadian Geographic Vertical Datum (CGVD2013).
- © 2022 architects—Alliance

No	Issued For	Date
1	ZBA and Site Plan Application	SEPT 15, 2022

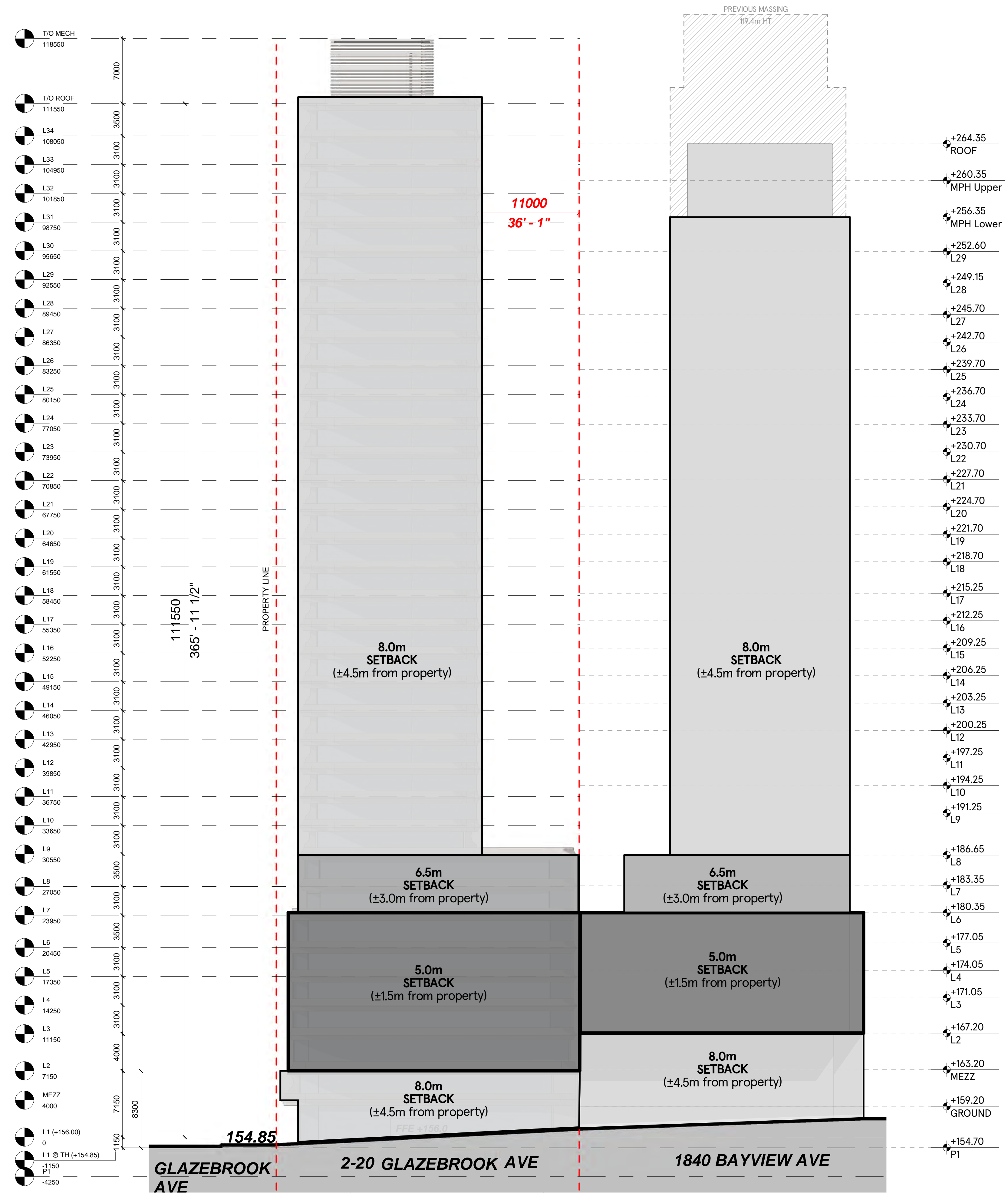
**a—A** architects—Alliance  
 317 Adelaide Street West, 2nd Flr  
 Toronto ON . M5V 1P9 . Canada  
 www.architectsalliance.com  
 +1. 416. 593. 6500

**1840 BAYVIEW**  
**Skale Developments Inc.**  
 1840 Bayview Ave . North York . ON . M4G 3C9

**PROPOSED MASSING**

Scale: 1:500  
 Project No: 22130

P:\Projects\1840 Bayview\1840\_Bayview\_Architectural\1840\_Bayview\_Architectural.dwg - 2022-09-15 10:00:00 AM - 1840 Bayview Avenue 1840 - Bayview  
 P:\Projects\1840 Bayview\1840\_Bayview\_Architectural\1840\_Bayview\_Architectural.dwg - 2022-09-15 10:00:00 AM - 1840 Bayview Avenue 1840 - Bayview



1. Copyright of this drawing is reserved by the Architect. The drawing and all associated documents are an instrument of service by the Architect. The drawing and the information contained therein may not be reproduced in whole or in part without prior written permission of the Architect.
2. These Contract Documents are the property of the Architect. The Architect bears no responsibility for the interpretation of these documents by the Contractor. Upon written application, the Architect will provide written/ graphic clarification or supplementary information regarding the intent of the Contract Documents. The Architect will review Shop Drawings submitted by the Contractor for design conformance only.
3. Drawings are not to be scaled for construction. The Contractor is to verify all existing conditions and dimensions required to perform the work and report any discrepancies with the Contract Documents to the Architect before commencing any work.
4. Positions of exposed finished mechanical or electrical devices, fittings, and fixtures are indicated on architectural drawings. The locations shown on the architectural drawings govern over the Mechanical and Electrical drawings. Those items not clearly located will be located as directed by the Architect.
5. These drawings are not to be used for construction unless noted below as "Issuance: For Construction"
6. All work is to be carried out in conformance with the Code and Bylaws of the authorities having jurisdiction.
7. The Architect of these plans and specifications gives no warranty or representation to any party about the constructability of the building(s) represented by them. All contractors or subcontractors must satisfy themselves when bidding and at all times ensure that they can properly construct the work represented by these plans.
8. Geodetic Elevations provided in these drawings are measured in accordance with the Canadian Geographic Vertical Datum (CGVD2013).

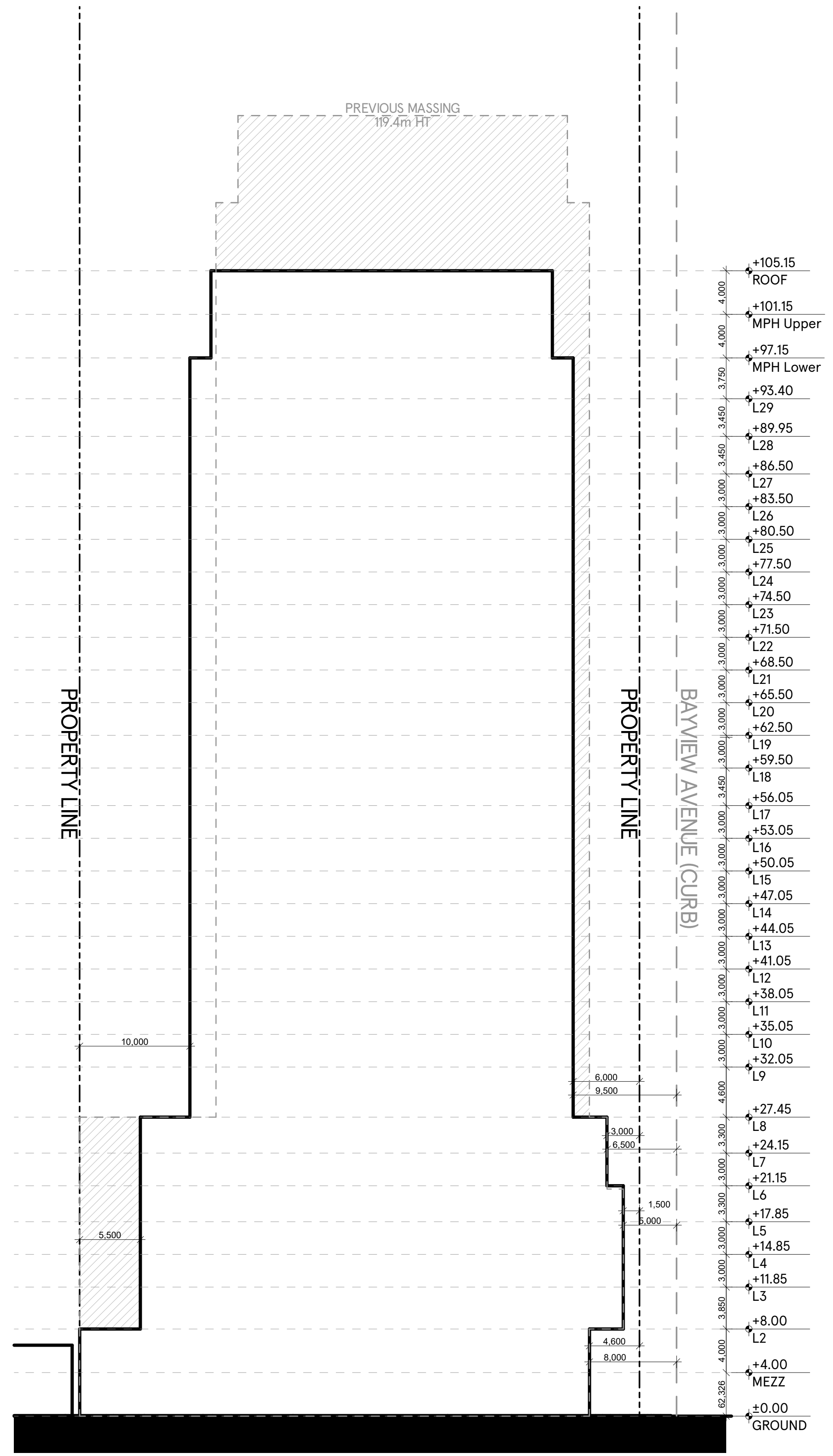
© 2022 architects—Alliance

No	Issued For	Date
1	ZBA and Site Plan Application	SEPT 15, 2022

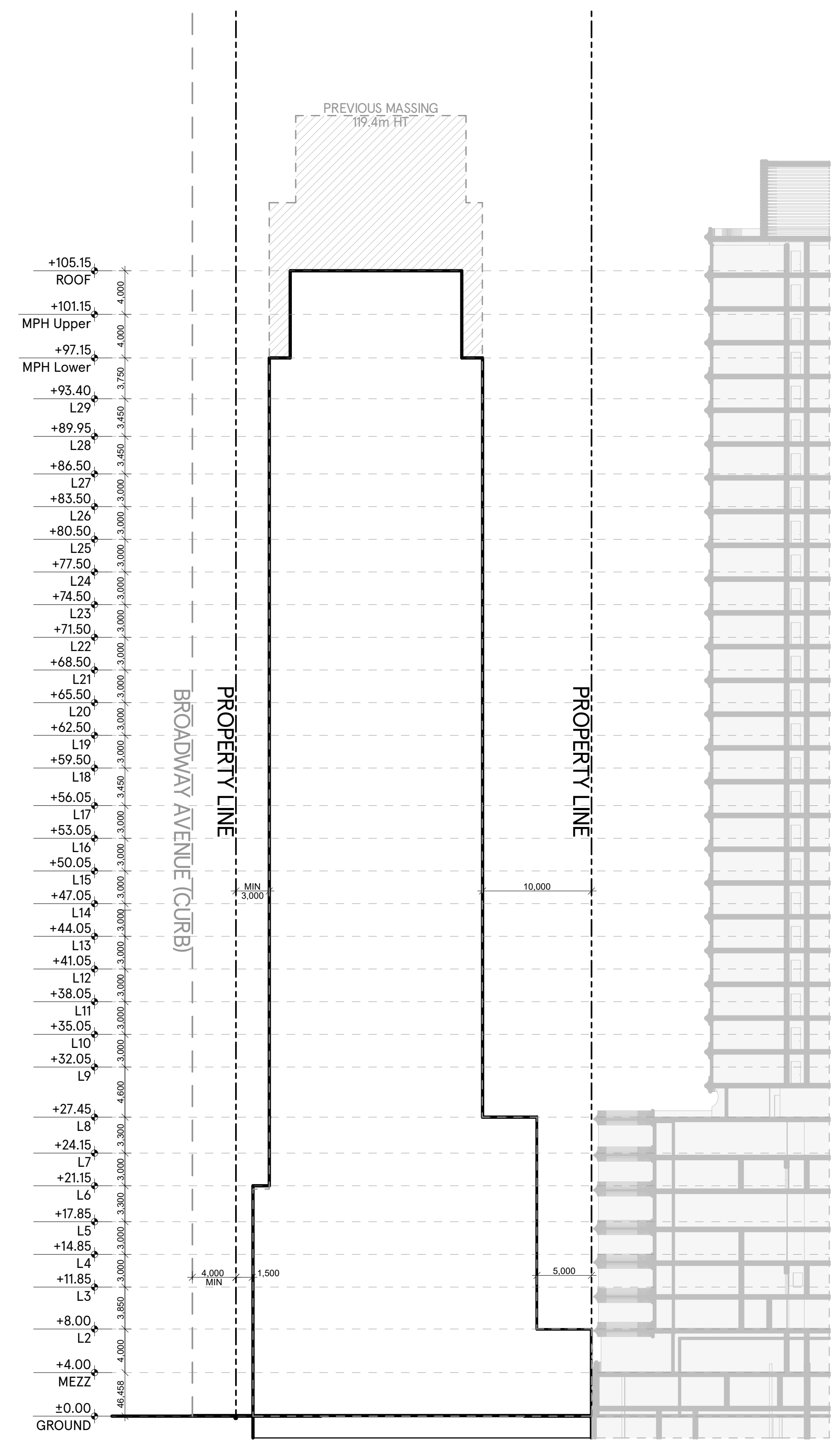
**a—A architects—Alliance**  
 317 Adelaide Street West, 2nd Flr  
 Toronto ON, M5V 1P9, Canada  
 www.architectsalliance.com  
 +1 416 593 6500

**1840 BAYVIEW**  
**Skale Developments Inc.**  
 1840 Bayview Ave. North York, ON, M4G 3C9

**BAYVIEW ELEVATION**  
 Scale: 1:250  
 Project No: 22130



EAST - WEST SECTION



NORTH - SOUTH SECTION

1. Copyright of this drawing is reserved by the Architect. The drawing and all associated documents are an instrument of service by the Architect. The drawing and the information contained therein may not be reproduced in whole or in part without prior written permission of the Architect.
2. These Contract Documents are the property of the Architect. The Architect bears no responsibility for the interpretation of these documents by the Contractor. Upon written application, the Architect will provide written/graphic clarification or supplementary information regarding the intent of the Contract Documents. The Architect will review Shop Drawings submitted by the Contractor for design conformance only.
3. Drawings are not to be scaled for construction. The Contractor is to verify all existing conditions and dimensions required to perform the work and report any discrepancies with the Contract Documents to the Architect before commencing any work.
4. Positions of exposed finished mechanical or electrical devices, fittings, and fixtures are indicated on architectural drawings. The locations shown on the architectural drawings govern over the Mechanical and Electrical drawings. Those items not clearly located will be located as directed by the Architect.
5. These drawings are not to be used for construction unless noted below as "Issuance: For Construction"
6. All work is to be carried out in conformance with the Code and Bylaws of the authorities having jurisdiction.
7. The Architect of these plans and specifications gives no warranty or representation to any party about the constructability of the building(s) represented by them. All contractors or subcontractors must satisfy themselves when bidding and at all times ensure that they can properly construct the work represented by these plans.
8. Geodetic Elevations provided in these drawings are measured in accordance with the Canadian Geographic Vertical Datum (CGVD2013).

© 2022 architects—Alliance

No	Issued For	Date
1	ZBA and Site Plan Application	SEPT 13, 2022

**a—A architects—Alliance**

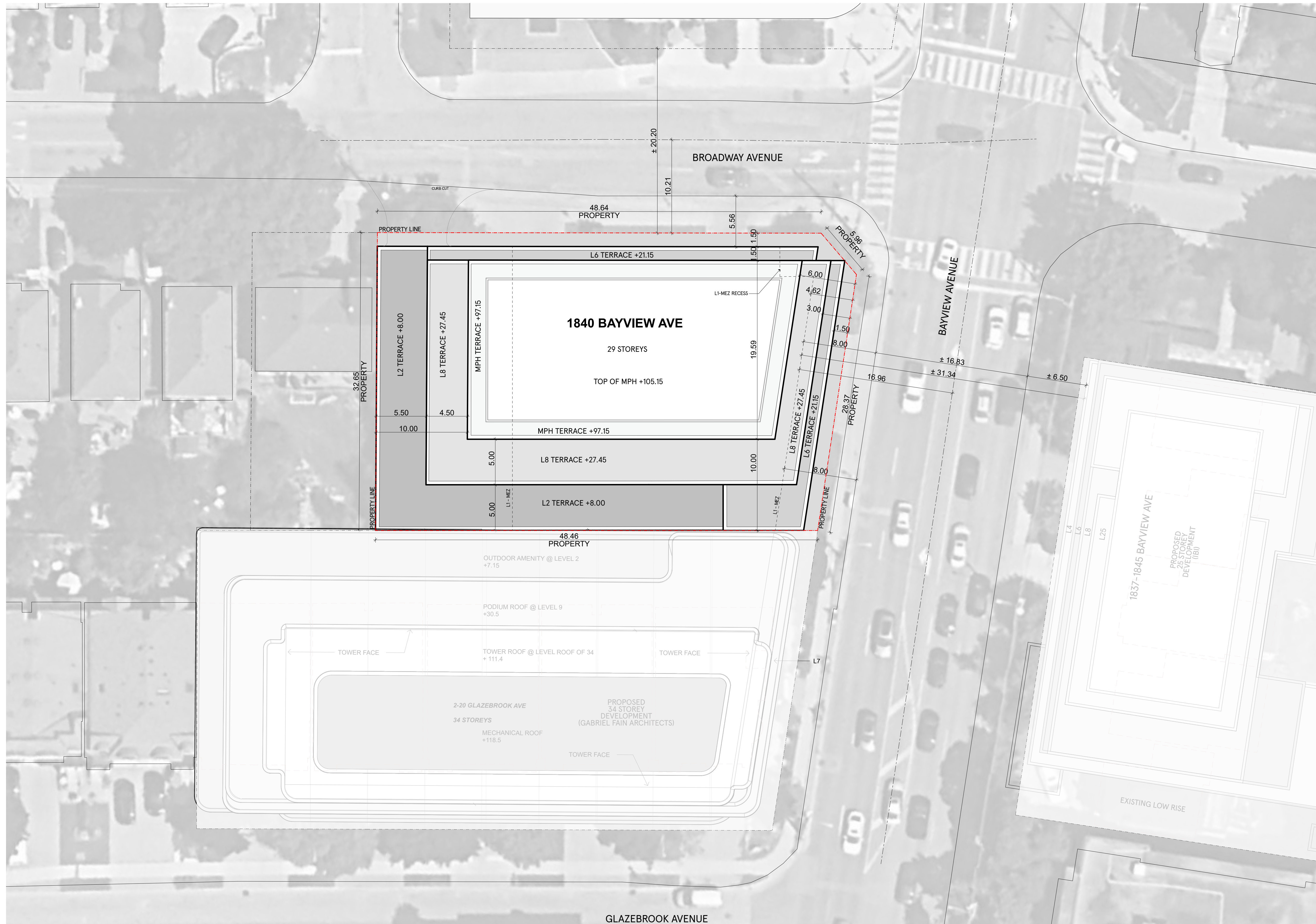
317 Adelaide Street West, 2nd Flr  
Toronto ON, M5V 1P9, Canada  
www.architectsalliance.com  
+1.416.593.6500

**1840 BAYVIEW**  
**Skale Developments Inc.**

1840 Bayview Ave . North York . ON . M4G 3C9

**PROPOSED SECTIONS**

Scale: 1:300  
Project No: 22130

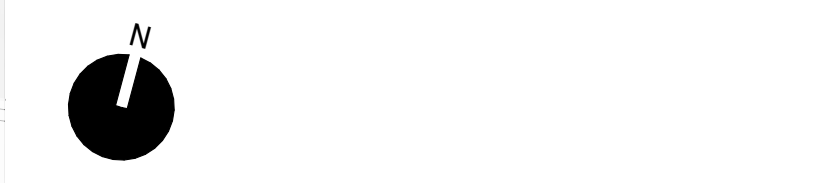


1. Copyright of this drawing is reserved by the Architect. The drawing and all associated documents are an instrument of service by the Architect. The drawing and the information contained therein may not be reproduced in whole or in part without prior written permission of the Architect.
2. These Contract Documents are the property of the Architect. The Architect bears no responsibility for the interpretation of these documents by the Contractor. Upon written application, the Architect will provide written/graphic clarification or supplementary information regarding the intent of the Contract Documents. The Architect will review Shop Drawings submitted by the Contractor for design conformance only.
3. Drawings are not to be scaled for construction. The Contractor is to verify all existing conditions and dimensions required to perform the work and report any discrepancies with the Contract Documents to the Architect before commencing any work.
4. Positions of exposed finished mechanical or electrical devices, fittings, and fixtures are indicated on architectural drawings. The locations shown on the architectural drawings govern over the Mechanical and Electrical drawings. Those items not clearly located will be located as directed by the Architect.
5. These drawings are not to be used for construction unless noted below as "Issuance: For Construction"
6. All work is to be carried out in conformance with the Code and Bylaws of the authorities having jurisdiction.
7. The Architect of these plans and specifications gives no warranty or representation to any party about the constructability of the building(s) represented by them. All contractors or subcontractors must satisfy themselves when bidding and at all times ensure that they can properly construct the work represented by these plans.
8. Geodetic Elevations provided in these drawings are measured in accordance with the Canadian Geographic Vertical Datum (CGVD2013).

© 2022 architects-Alliance

No	Issued For	Date
1	ZBA and Site Plan Application	SEPT 13, 2022

**a—A** architects—Alliance  
 317 Adelaide Street West, 2nd Flr  
 Toronto ON, M5V 1P9, Canada  
 www.architectsalliance.com  
 +1 416 593 6500

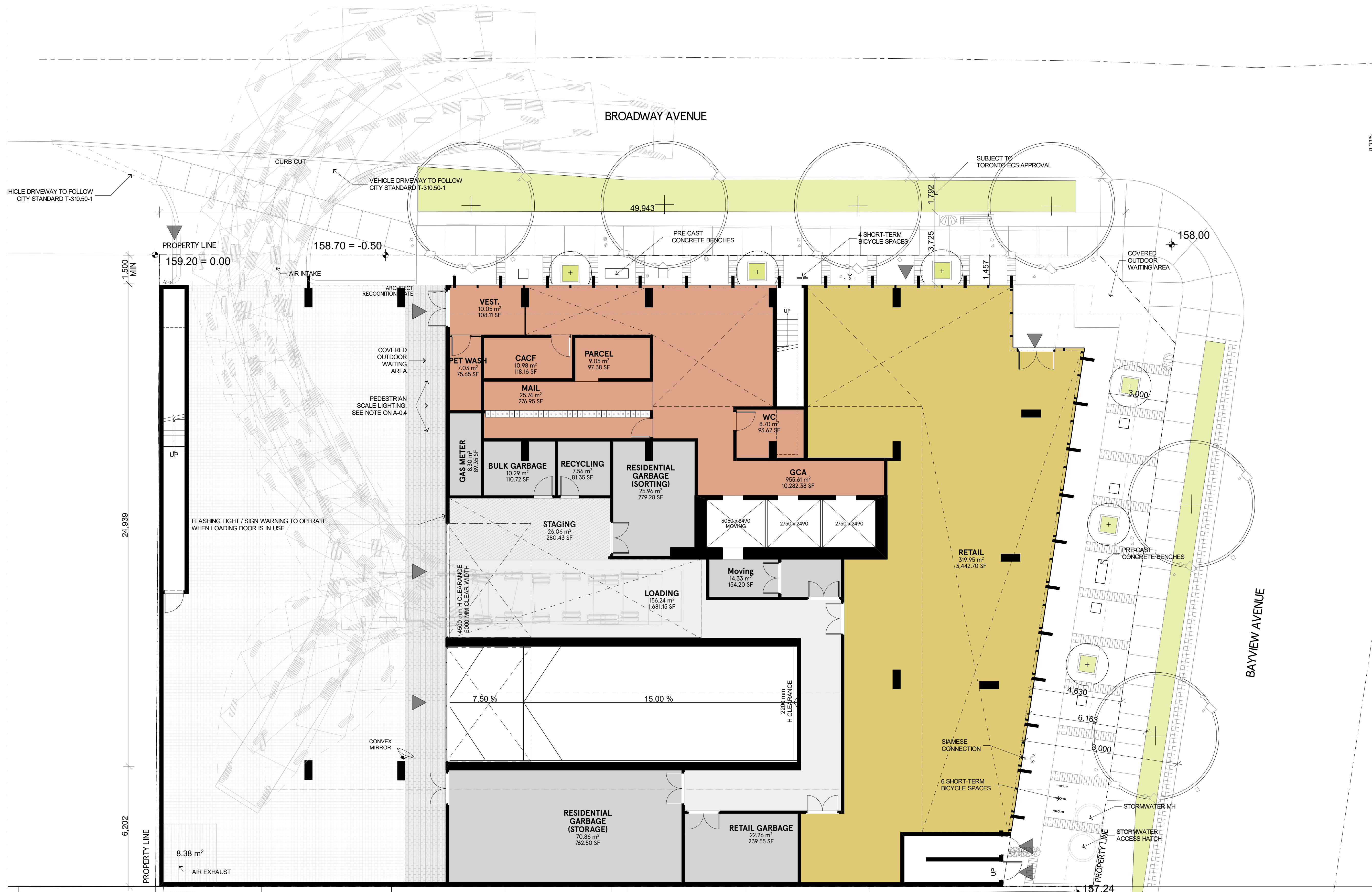


**1840 BAYVIEW**  
**Skale Developments Inc.**

1840 Bayview Ave . North York . ON . M4G 3C9

**SITE PLAN | ROOF**

Scale: 1:200  
 Project No: 22130



1. Copyright of this drawing is reserved by the Architect. The drawing and all associated documents are an instrument of service by the Architect. The drawing and the information contained therein may not be reproduced in whole or in part without prior written permission of the Architect.
  2. These Contract Documents are the property of the Architect. The Architect bears no responsibility for the interpretation of these documents by the Contractor. Upon written application, the Architect will provide written/ graphic clarification or supplementary information regarding the intent of the Contract Documents. The Architect will review Shop Drawings submitted by the Contractor for design conformance only.
  3. Drawings are not to be scaled for construction. The Contractor is to verify all existing conditions and dimensions required to perform the work and report any discrepancies with the Contract Documents to the Architect before commencing any work.
  4. Positions of exposed finished mechanical or electrical devices, fittings, and fixtures are indicated on architectural drawings. The locations shown on the architectural drawings govern over the Mechanical and Electrical drawings. Those items not clearly located will be located as directed by the Architect.
  5. These drawings are not to be used for construction unless noted below as "Issuance: For Construction"
  6. All work is to be carried out in conformance with the Code and Bylaws of the authorities having jurisdiction.
  7. The Architect of these plans and specifications gives no warranty or representation to any party about the constructability of the building(s) represented by them. All contractors or subcontractors must satisfy themselves when bidding and at all times ensure that they can properly construct the work represented by these plans.
  8. Geodetic Elevations provided in these drawings are measured in accordance with the Canadian Geographic Vertical Datum (CGVD2013).
- © 2022 architects—Alliance

No	Issued For	Date
1	ZBA and Site Plan Application	SEPT 15, 2022



**1840 BAYVIEW**  
**Skale Developments Inc.**

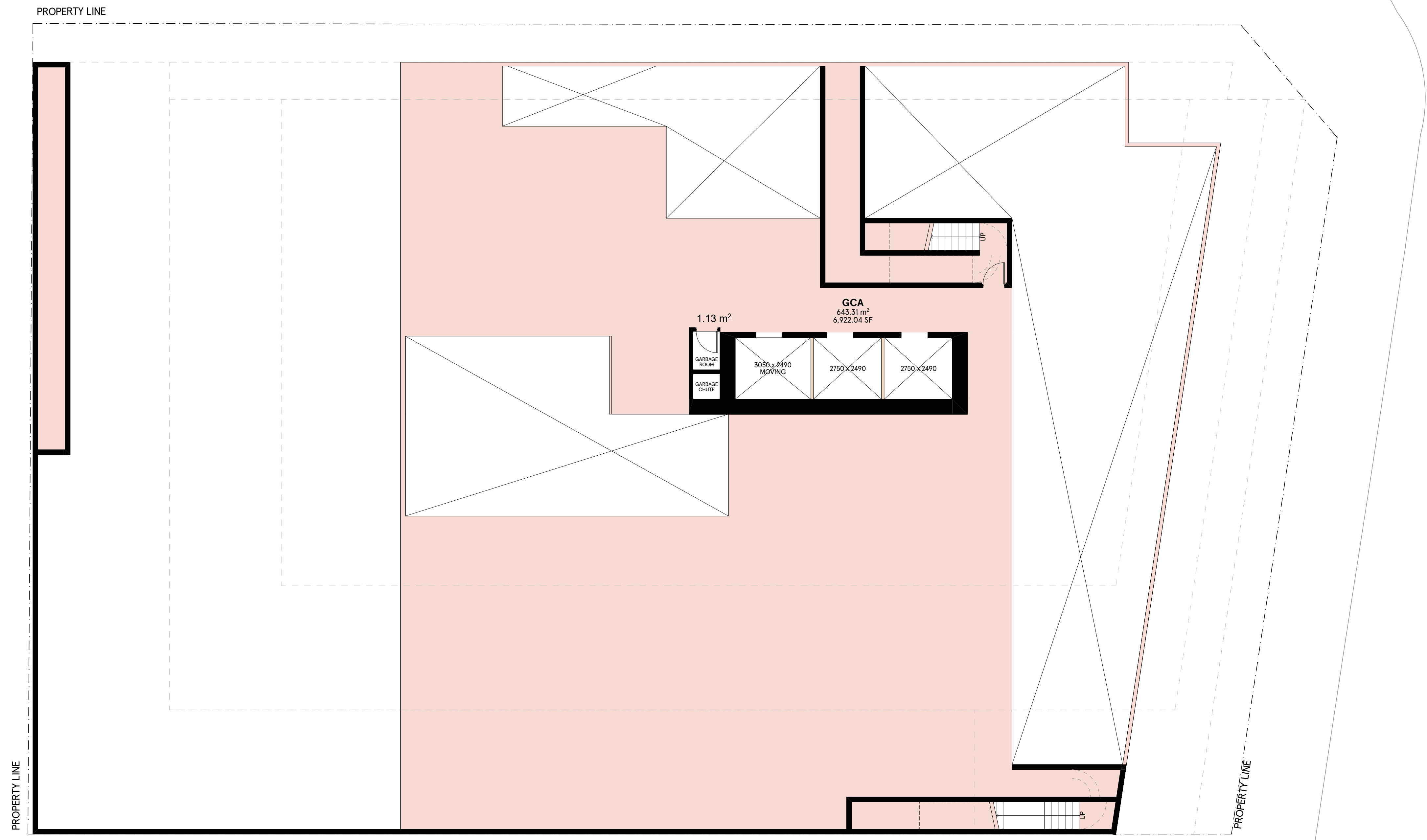
1840 Bayview Ave . North York . ON . M4G 3C9

**GROUND**

Scale: 1:100

Project No: 22130

#toPZvalue  
 #pZvalue



1. Copyright of this drawing is reserved by the Architect. The drawing and all associated documents are an instrument of service by the Architect. The drawing and the information contained therein may not be reproduced in whole or in part without prior written permission of the Architect.
  2. These Contract Documents are the property of the Architect. The Architect bears no responsibility for the interpretation of these documents by the Contractor. Upon written application, the Architect will provide written/ graphic clarification or supplementary information regarding the intent of the Contract Documents. The Architect will review Shop Drawings submitted by the Contractor for design conformance only.
  3. Drawings are not to be scaled for construction. The Contractor is to verify all existing conditions and dimensions required to perform the work and report any discrepancies with the Contract Documents to the Architect before commencing any work.
  4. Positions of exposed finished mechanical or electrical devices, fittings, and fixtures are indicated on architectural drawings. The locations shown on the architectural drawings govern over the Mechanical and Electrical drawings. Those items not clearly located will be located as directed by the Architect.
  5. These drawings are not to be used for construction unless noted below as "Issuance: For Construction"
  6. All work is to be carried out in conformance with the Code and Bylaws of the authorities having jurisdiction.
  7. The Architect of these plans and specifications gives no warranty or representation to any party about the constructability of the building(s) represented by them. All contractors or subcontractors must satisfy themselves when bidding and at all times ensure that they can properly construct the work represented by these plans.
  8. Geodetic Elevations provided in these drawings are measured in accordance with the Canadian Geographic Vertical Datum (CGVD2013).
- © 2022 architects—Alliance

No	Issued For	Date
1	ZBA and Site Plan Application	SEPT 15, 2022

**a—A architects—Alliance**  
 317 Adelaide Street West, 2nd Flr  
 Toronto ON, M5V 1P9, Canada  
 www.architectsalliance.com  
 +1. 416. 593. 6500

**1840 BAYVIEW**  
**Skale Developments Inc.**  
 1840 Bayview Ave. North York, ON, M4G 3C9

**Mezz.**  
 Scale: 1:100  
 Project No: 22130

B:\Microsoft\severny.architectsalliance.com - B:\Microsoft\severny.architectsalliance.com - 1840 Bayview Avenue\1840 Bayview



1. Copyright of this drawing is reserved by the Architect. The drawing and all associated documents are an instrument of service by the Architect. The drawing and the information contained therein may not be reproduced in whole or in part without prior written permission of the Architect.
  2. These Contract Documents are the property of the Architect. The Architect bears no responsibility for the interpretation of these documents by the Contractor. Upon written application, the Architect will provide written/graphic clarification or supplementary information regarding the intent of the Contract Documents. The Architect will review Shop Drawings submitted by the Contractor for design conformance only.
  3. Drawings are not to be scaled for construction. The Contractor is to verify all existing conditions and dimensions required to perform the work and report any discrepancies with the Contract Documents to the Architect before commencing any work.
  4. Positions of exposed finished mechanical or electrical devices, fittings, and fixtures are indicated on architectural drawings. The locations shown on the architectural drawings govern over the Mechanical and Electrical drawings. Those items not clearly located will be located as directed by the Architect.
  5. These drawings are not to be used for construction unless noted below as "Issuance: For Construction"
  6. All work is to be carried out in conformance with the Code and Bylaws of the authorities having jurisdiction.
  7. The Architect of these plans and specifications gives no warranty or representation to any party about the constructability of the building(s) represented by them. All contractors or subcontractors must satisfy themselves when bidding and at all times ensure that they can properly construct the work represented by these plans.
  8. Geodetic Elevations provided in these drawings are measured in accordance with the Canadian Geographic Vertical Datum (CGVD2013).
- © 2022 architects—Alliance

No	Issued For	Date
1	ZBA and Site Plan Application	SEPT 15, 2022

**a—A architects—Alliance**  
317 Adelaide Street West, 2nd Flr  
Toronto ON, M5V 1P9, Canada  
www.architectsalliance.com  
+1.416.593.6500

**1840 BAYVIEW**  
**Skale Developments Inc.**  
  
1840 Bayview Ave. North York, ON, M4G 3C9

L2  
  
Scale: 1:100  
Project No: 22130

Profession: Mechanical, March 4, 2024

B:\Microsoft\severity.architectsalliance.com - B:\Microsoft\Basis for Arch\22130 - 1840 Bayview Avenue\1840\_Bayview



- Copyright of this drawing is reserved by the Architect. The drawing and all associated documents are an instrument of service by the Architect. The drawing and the information contained therein may not be reproduced in whole or in part without prior written permission of the Architect.
- These Contract Documents are the property of the Architect. The Architect bears no responsibility for the interpretation of these documents by the Contractor. Upon written application, the Architect will provide written/ graphic clarification or supplementary information regarding the intent of the Contract Documents. The Architect will review Shop Drawings submitted by the Contractor for design conformance only.
- Drawings are not to be scaled for construction. The Contractor is to verify all existing conditions and dimensions required to perform the work and report any discrepancies with the Contract Documents to the Architect before commencing any work.
- Positions of exposed finished mechanical or electrical devices, fittings, and fixtures are indicated on architectural drawings. The locations shown on the architectural drawings govern over the Mechanical and Electrical drawings. Those items not clearly located will be located as directed by the Architect.
- These drawings are not to be used for construction unless noted below as "Issuance: For Construction"
- All work is to be carried out in conformance with the Code and Bylaws of the authorities having jurisdiction.
- The Architect of these plans and specifications gives no warranty or representation to any party about the constructability of the building(s) represented by them. All contractors or subcontractors must satisfy themselves when bidding and at all times ensure that they can properly construct the work represented by these plans.
- Geodetic Elevations provided in these drawings are measured in accordance with the Canadian Geographic Vertical Datum (CGVD2013).

© 2022 architects—Alliance

No	Issued For	Date
1	ZBA and Site Plan Application	SEPT 15, 2022

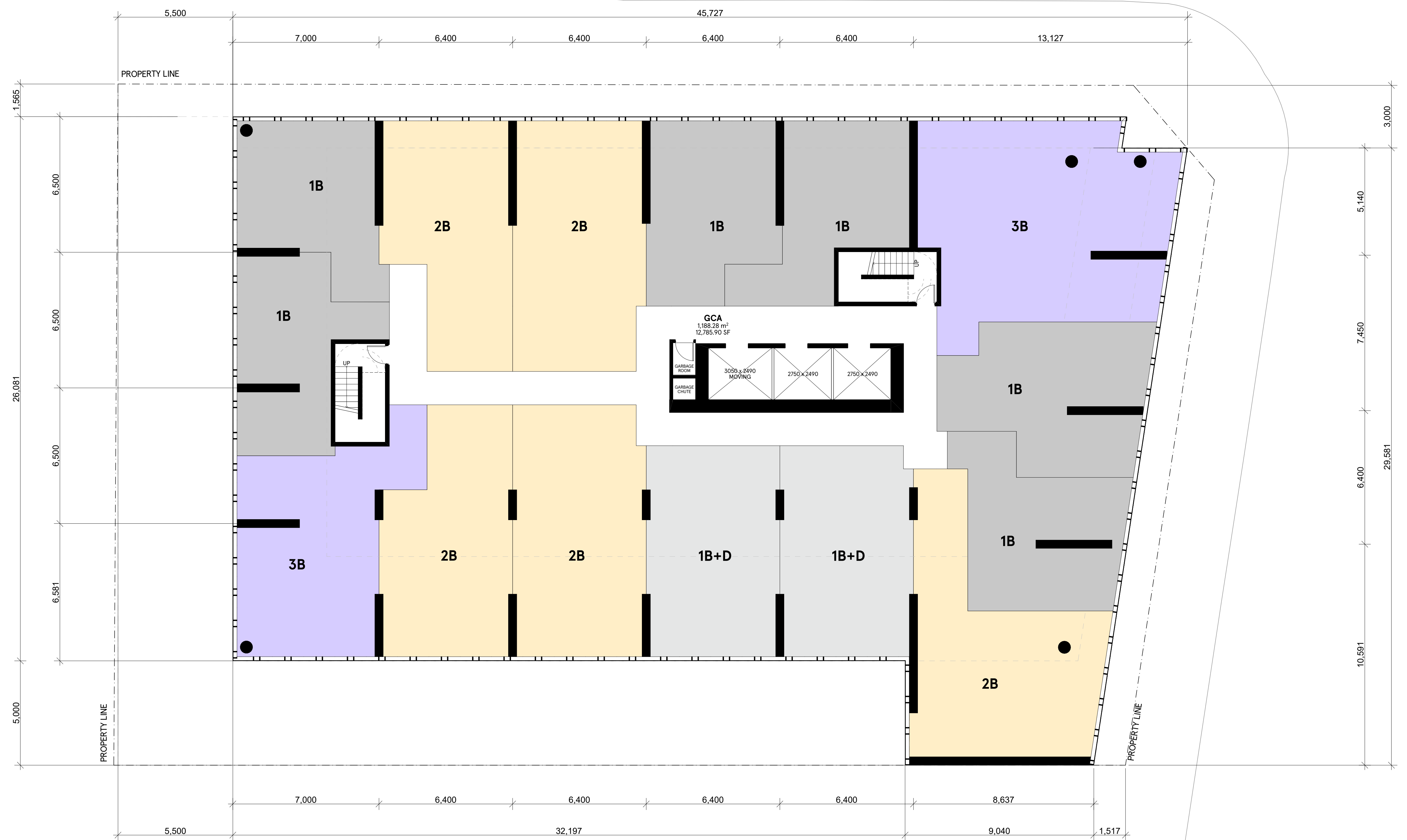
**a—A** architects—Alliance  
 317 Adelaide Street West, 2nd Flr  
 Toronto ON, M5V 1P9, Canada  
 www.architectsalliance.com  
 +1. 416. 593. 6500

**1840 BAYVIEW**  
**Skale Developments Inc.**  
 1840 Bayview Ave. North York, ON, M4G 3C9

L3  
 Scale: 1:100  
 Project No: 22130



1. Copyright of this drawing is reserved by the Architect. The drawing and all associated documents are an instrument of service by the Architect. The drawing and the information contained therein may not be reproduced in whole or in part without prior written permission of the Architect.
  2. These Contract Documents are the property of the Architect. The Architect bears no responsibility for the interpretation of these documents by the Contractor. Upon written application, the Architect will provide written/graphic clarification or supplementary information regarding the intent of the Contract Documents. The Architect will review Shop Drawings submitted by the Contractor for design conformance only.
  3. Drawings are not to be scaled for construction. The Contractor is to verify all existing conditions and dimensions required to perform the work and report any discrepancies with the Contract Documents to the Architect before commencing any work.
  4. Positions of exposed finished mechanical or electrical devices, fittings, and fixtures are indicated on architectural drawings. The locations shown on the architectural drawings govern over the Mechanical and Electrical drawings. Those items not clearly located will be located as directed by the Architect.
  5. These drawings are not to be used for construction unless noted below as "Issuance: For Construction"
  6. All work is to be carried out in conformance with the Code and Bylaws of the authorities having jurisdiction.
  7. The Architect of these plans and specifications gives no warranty or representation to any party about the constructability of the building(s) represented by them. All contractors or subcontractors must satisfy themselves when bidding and at all times ensure that they can properly construct the work represented by these plans.
  8. Geodetic Elevations provided in these drawings are measured in accordance with the Canadian Geographic Vertical Datum (CGVD2013).
- © 2022 architects—Alliance

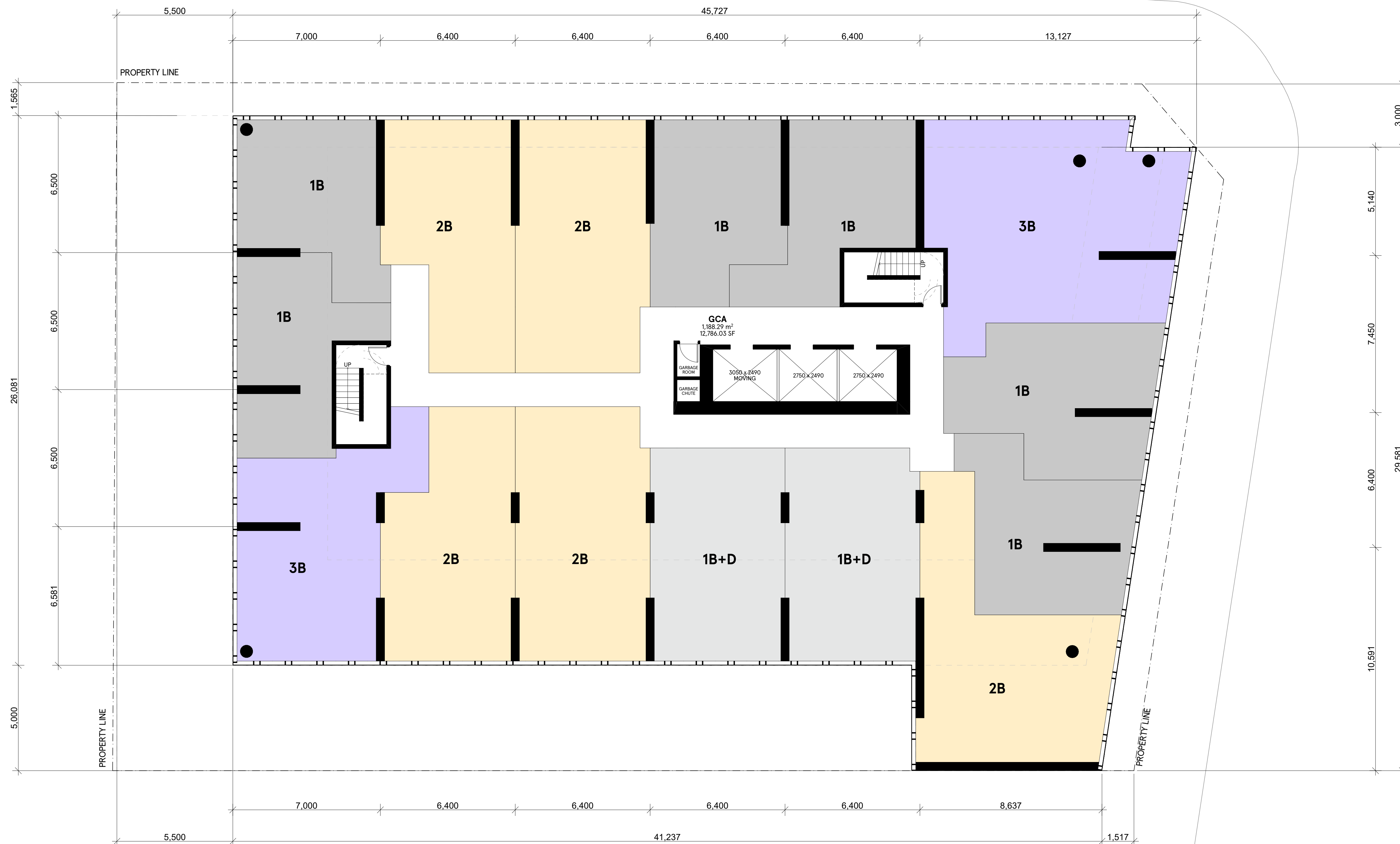


No	Issued For	Date
1	ZBA and Site Plan Application	SEPT 15, 2022

**a—A** architects—Alliance  
 317 Adelaide Street West, 2nd Flr  
 Toronto ON, M5V 1P9, Canada  
[www.architectsalliance.com](http://www.architectsalliance.com)  
 +1. 416. 593. 6500

**1840 BAYVIEW**  
**Skale Developments Inc.**  
 1840 Bayview Ave. North York, ON, M4G 3C9

L4  
 Scale: 1:100  
 Project No: 22130



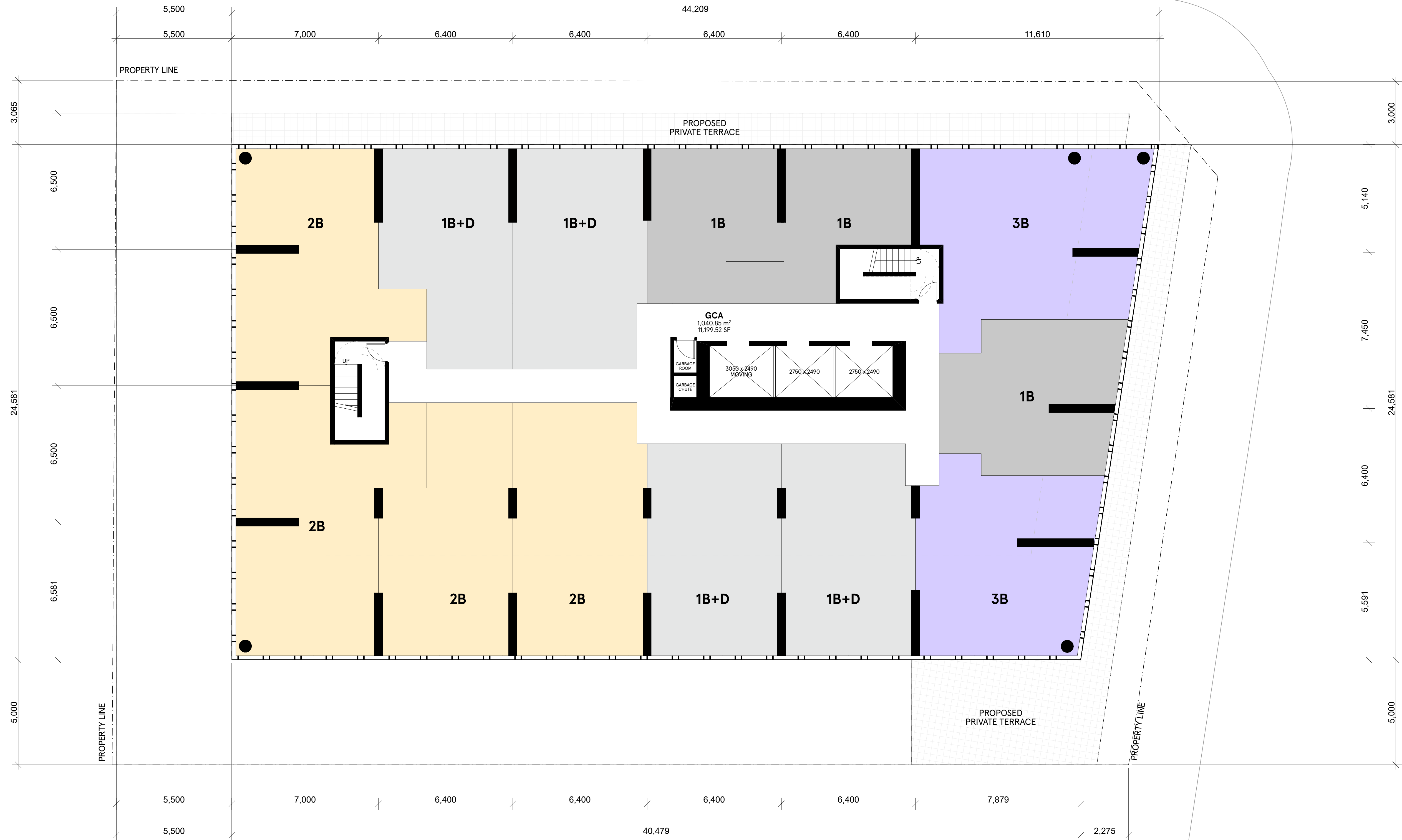
1. Copyright of this drawing is reserved by the Architect. The drawing and all associated documents are an instrument of service by the Architect. The drawing and the information contained therein may not be reproduced in whole or in part without prior written permission of the Architect.
  2. These Contract Documents are the property of the Architect. The Architect bears no responsibility for the interpretation of these documents by the Contractor. Upon written application, the Architect will provide written/graphic clarification or supplementary information regarding the intent of the Contract Documents. The Architect will review Shop Drawings submitted by the Contractor for design conformance only.
  3. Drawings are not to be scaled for construction. The Contractor is to verify all existing conditions and dimensions required to perform the work and report any discrepancies with the Contract Documents to the Architect before commencing any work.
  4. Positions of exposed finished mechanical or electrical devices, fittings, and fixtures are indicated on architectural drawings. The locations shown on the architectural drawings govern over the Mechanical and Electrical drawings. Those items not clearly located will be located as directed by the Architect.
  5. These drawings are not to be used for construction unless noted below as "Issuance: For Construction"
  6. All work is to be carried out in conformance with the Code and Bylaws of the authorities having jurisdiction.
  7. The Architect of these plans and specifications gives no warranty or representation to any party about the constructability of the building(s) represented by them. All contractors or subcontractors must satisfy themselves when bidding and at all times ensure that they can properly construct the work represented by these plans.
  8. Geodetic Elevations provided in these drawings are measured in accordance with the Canadian Geographic Vertical Datum (CGVD2013).
- © 2022 architects—Alliance

No	Issued For	Date
1	ZBA and Site Plan Application	SEPT 15, 2022

**a—A** architects—Alliance  
 317 Adelaide Street West, 2nd Flr  
 Toronto ON . M5V 1P9 . Canada  
 www.architectsalliance.com  
 +1. 416. 593. 6500

**1840 BAYVIEW**  
**Skale Developments Inc.**  
 1840 Bayview Ave . North York . ON . M4G 3C9

L5  
 Scale: 1:100  
 Project No: 22130



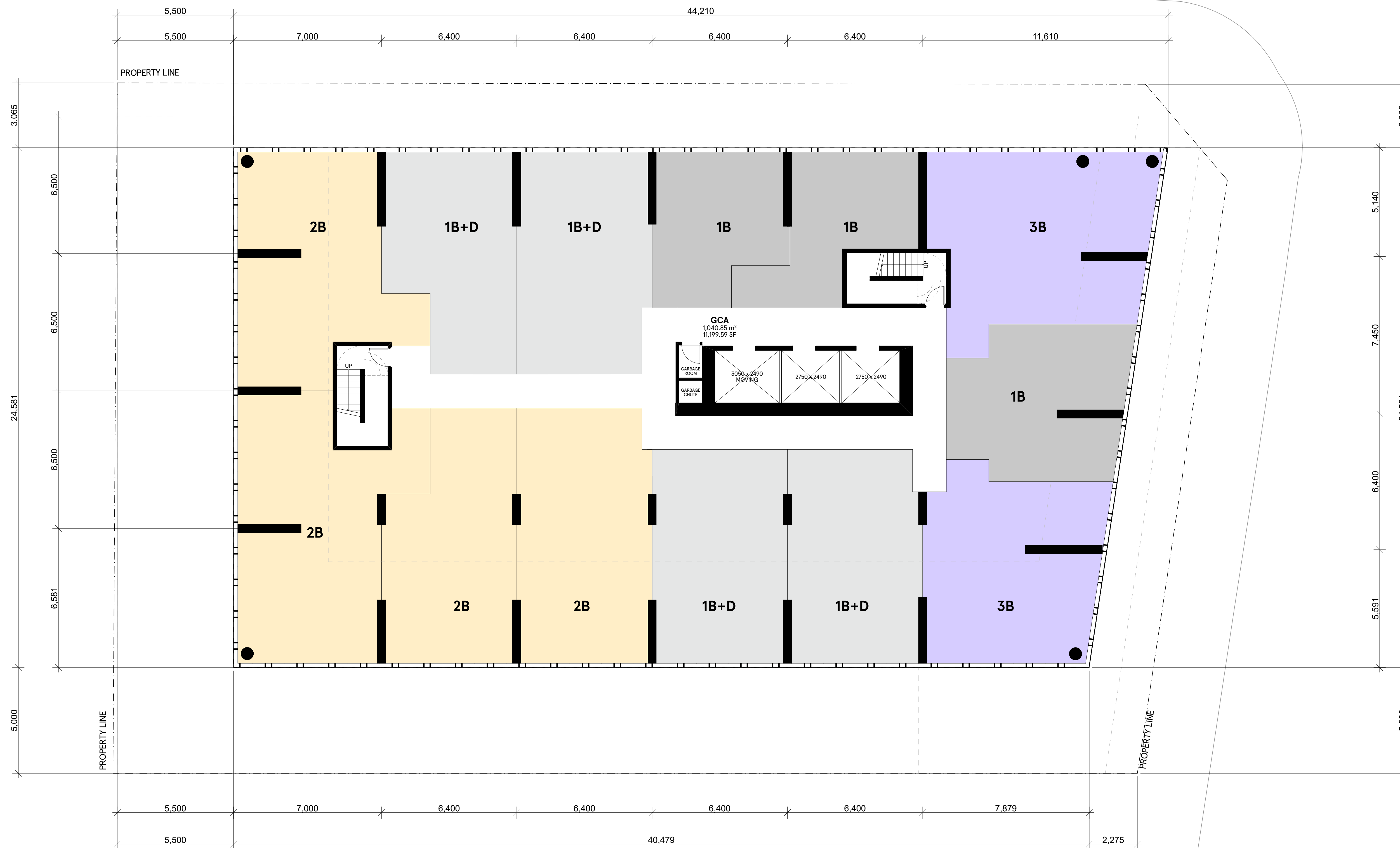
- Copyright of this drawing is reserved by the Architect. The drawing and all associated documents are an instrument of service by the Architect. The drawing and the information contained therein may not be reproduced in whole or in part without prior written permission of the Architect.
  - These Contract Documents are the property of the Architect. The Architect bears no responsibility for the interpretation of these documents by the Contractor. Upon written application, the Architect will provide written/graphic clarification or supplementary information regarding the intent of the Contract Documents. The Architect will review Shop Drawings submitted by the Contractor for design conformance only.
  - Drawings are not to be scaled for construction. The Contractor is to verify all existing conditions and dimensions required to perform the work and report any discrepancies with the Contract Documents to the Architect before commencing any work.
  - Positions of exposed finished mechanical or electrical devices, fittings, and fixtures are indicated on architectural drawings. The locations shown on the architectural drawings govern over the Mechanical and Electrical drawings. Those items not clearly located will be located as directed by the Architect.
  - These drawings are not to be used for construction unless noted below as "Issuance: For Construction"
  - All work is to be carried out in conformance with the Code and Bylaws of the authorities having jurisdiction.
  - The Architect of these plans and specifications gives no warranty or representation to any party about the constructability of the building(s) represented by them. All contractors or subcontractors must satisfy themselves when bidding and at all times ensure that they can properly construct the work represented by these plans.
  - Geodetic Elevations provided in these drawings are measured in accordance with the Canadian Geographic Vertical Datum (CGVD2013).
- © 2022 architects—Alliance

No	Issued For	Date
1	ZBA and Site Plan Application	SEPT 15, 2022

**a—A** architects—Alliance  
317 Adelaide Street West, 2nd Flr  
Toronto ON, M5V 1P9, Canada  
www.architectsalliance.com  
+1 416 593 6500

**1840 BAYVIEW**  
**Skale Developments Inc.**  
1840 Bayview Ave. North York, ON, M4G 3C9

L6  
Scale: 1:100  
Project No: 22130



1. Copyright of this drawing is reserved by the Architect. The drawing and all associated documents are an instrument of service by the Architect. The drawing and the information contained therein may not be reproduced in whole or in part without prior written permission of the Architect.
  2. These Contract Documents are the property of the Architect. The Architect bears no responsibility for the interpretation of these documents by the Contractor. Upon written application, the Architect will provide written/graphic clarification or supplementary information regarding the intent of the Contract Documents. The Architect will review Shop Drawings submitted by the Contractor for design conformance only.
  3. Drawings are not to be scaled for construction. The Contractor is to verify all existing conditions and dimensions required to perform the work and report any discrepancies with the Contract Documents to the Architect before commencing any work.
  4. Positions of exposed finished mechanical or electrical devices, fittings, and fixtures are indicated on architectural drawings. The locations shown on the architectural drawings govern over the Mechanical and Electrical drawings. Those items not clearly located will be located as directed by the Architect.
  5. These drawings are not to be used for construction unless noted below as "Issuance: For Construction"
  6. All work is to be carried out in conformance with the Code and Bylaws of the authorities having jurisdiction.
  7. The Architect of these plans and specifications gives no warranty or representation to any party about the constructability of the building(s) represented by them. All contractors or subcontractors must satisfy themselves when bidding and at all times ensure that they can properly construct the work represented by these plans.
  8. Geodetic Elevations provided in these drawings are measured in accordance with the Canadian Geographic Vertical Datum (CGVD2013).
- © 2022 architects—Alliance

No	Issued For	Date
1	ZBA and Site Plan Application	SEPT 15, 2022

**a—A architects—Alliance**  
 317 Adelaide Street West, 2nd Flr  
 Toronto ON, M5V 1P9, Canada  
 www.architectsalliance.com  
 +1 416 593 6500

**1840 BAYVIEW**  
**Skale Developments Inc.**  
 1840 Bayview Ave. North York, ON, M4G 3C9

L7  
 Scale: 1:100  
 Project No: 22130

- Copyright of this drawing is reserved by the Architect. The drawing and all associated documents are an instrument of service by the Architect. The drawing and the information contained therein may not be reproduced in whole or in part without prior written permission of the Architect.
- These Contract Documents are the property of the Architect. The Architect bears no responsibility for the interpretation of these documents by the Contractor. Upon written application, the Architect will provide written/ graphic clarification or supplementary information regarding the intent of the Contract Documents. The Architect will review Shop Drawings submitted by the Contractor for design conformance only.
- Drawings are not to be scaled for construction. The Contractor is to verify all existing conditions and dimensions required to perform the work and report any discrepancies with the Contract Documents to the Architect before commencing any work.
- Positions of exposed finished mechanical or electrical devices, fittings, and fixtures are indicated on architectural drawings. The locations shown on the architectural drawings govern over the Mechanical and Electrical drawings. Those items not clearly located will be located as directed by the Architect.
- These drawings are not to be used for construction unless noted below as "Issuance: For Construction"
- All work is to be carried out in conformance with the Code and Bylaws of the authorities having jurisdiction.
- The Architect of these plans and specifications gives no warranty or representation to any party about the constructability of the building(s) represented by them. All contractors or subcontractors must satisfy themselves when bidding and at all times ensure that they can properly construct the work represented by these plans.
- Geodetic Elevations provided in these drawings are measured in accordance with the Canadian Geographic Vertical Datum (CGVD2013).

© 2022 architects—Alliance



No	Issued For	Date
1	ZBA and Site Plan Application	SEPT 13, 2022

**a—A architects—Alliance**  
 317 Adelaide Street West, 2nd Flr  
 Toronto ON, M5V 1P9, Canada  
 www.architectsalliance.com  
 +1.416.593.6500

**1840 BAYVIEW**  
**Skale Developments Inc.**

1840 Bayview Ave . North York . ON . M4G 3C9

L8

Scale: 1:100

Project No: 22130

Professional: Monday, March 6, 2024  
B:\Microsoft\severity\architect\alliance\1840 Bayview\1840 Bayview.dwg



1. Copyright of this drawing is reserved by the Architect. The drawing and all associated documents are an instrument of service by the Architect. The drawing and the information contained therein may not be reproduced in whole or in part without prior written permission of the Architect.
  2. These Contract Documents are the property of the Architect. The Architect bears no responsibility for the interpretation of these documents by the Contractor. Upon written application, the Architect will provide written/graphic clarification or supplementary information regarding the intent of the Contract Documents. The Architect will review Shop Drawings submitted by the Contractor for design conformance only.
  3. Drawings are not to be scaled for construction. The Contractor is to verify all existing conditions and dimensions required to perform the work and report any discrepancies with the Contract Documents to the Architect before commencing any work.
  4. Positions of exposed finished mechanical or electrical devices, fittings, and fixtures are indicated on architectural drawings. The locations shown on the architectural drawings govern over the Mechanical and Electrical drawings. Those items not clearly located will be located as directed by the Architect.
  5. These drawings are not to be used for construction unless noted below as "Issuance: For Construction"
  6. All work is to be carried out in conformance with the Code and Bylaws of the authorities having jurisdiction.
  7. The Architect of these plans and specifications gives no warranty or representation to any party about the constructability of the building(s) represented by them. All contractors or subcontractors must satisfy themselves when bidding and at all times ensure that they can properly construct the work represented by these plans.
  8. Geodetic Elevations provided in these drawings are measured in accordance with the Canadian Geographic Vertical Datum (CGVD2013).
- © 2022 architects—Alliance

No	Issued For	Date
1	ZBA and Site Plan Application	SEPT 13, 2022

**a—A** architects—Alliance  
317 Adelaide Street West, 2nd Flr  
Toronto ON, M5V 1P9, Canada  
www.architectsalliance.com  
+1. 416. 593. 6500

**1840 BAYVIEW**  
**Skale Developments Inc.**  
1840 Bayview Ave . North York . ON . M4G 3C9

L9-29 TYPICAL  
Scale: 1:100  
Project No: 22130