

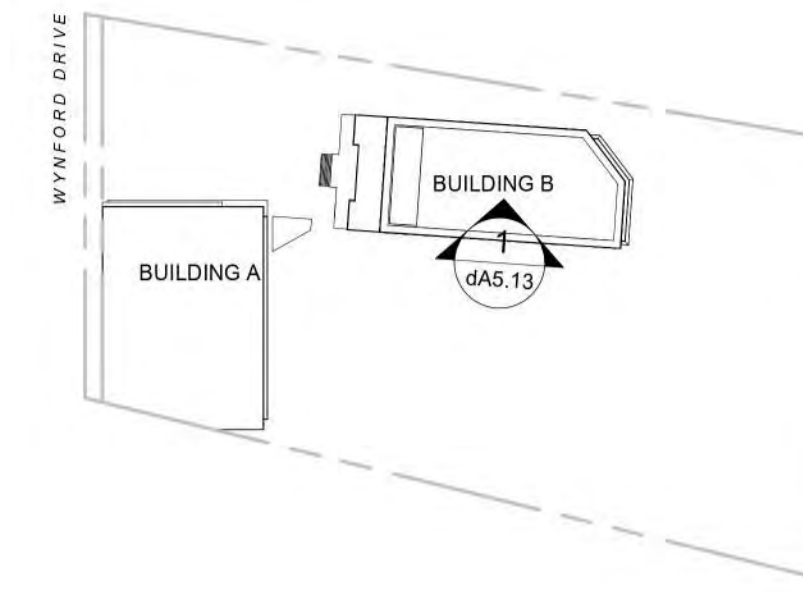
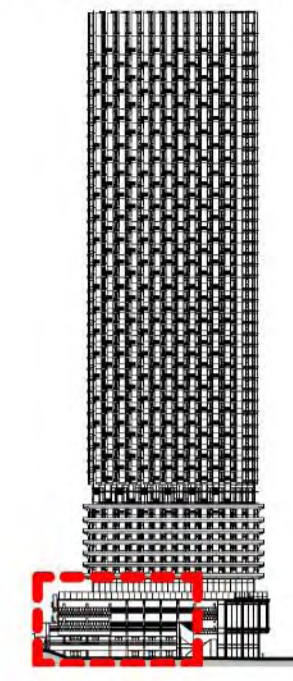
EXTERIOR FINISH SCHEDULE

- 1A GFRC (GLASS FIBER REINFORCED CONCRETE) PANEL - IVORY WHITE MATTE FINISH
- 1B GFRC (GLASS FIBER REINFORCED CONCRETE) PANEL - IVORY WHITE MATTE FINISH WITH FLUTED RIB PATTERN
- 2A BIRD FRIENDLY VISION GLASS WITH LOW E COATING IN PREFINISHED ALUMINUM FRAME IN CHAMPAGNE COLOUR
- 2B BIRD FRIENDLY CLEAR GLASS GUARD RAIL
- 2C CLEAR VISION GLASS WITH LOW E COATING IN PREFINISHED ALUMINUM FRAME IN CHAMPAGNE COLOUR

- 3 CLEAR GLASS CANOPY
- 4 ALUMINUM PICKET RAILING IN CHAMPAGNE COLOUR
- 6 PREFINISHED ALUMINUM FRAME IN CHAMPAGNE COLOUR
- 6 ALUMINUM RAILING POST IN CHAMPAGNE COLOUR
- 8 SCREENING - WOOD COLOUR
- 9 LIGHT FIXTURE - DARK SKY COMPLIANT

Exterior Finish Legend **3**
dA5.13

BUILDING B



Key Diagrams **2**
dA5.13

Authorities Having Jurisdiction

WITHOUT PREJUDICE

All Drawings, Specifications, and Related Documents are the Copyright of the Architect. The Architect retains all rights to control all uses of these documents for the intended issuance/use as identified below. Reproduction of these Documents, without permission from the Architect, is strictly prohibited. The Authorities Having Jurisdiction are permitted to use, distribute, and reproduce these drawings for the intended issuance as noted and dated below, however the extended permission to the Authorities Having Jurisdiction in no way debases or limits the Copyright of the Architect, or control of use of these documents by the Architect.

Do not scale the drawings.

This Drawing Is Not To Be Used For Construction Until Signed By The Architect.

Date:

KIRKOR
ARCHITECTS AND PLANNERS

20 De Boers Drive Suite 400
Toronto, ON M3J 0H1

Revisions:

No.:	Revision:	Date:
04	Mediation Set	Jan 15, 2024
03	Mediation Set	Dec 07, 2023
02	Re-issued for ZBA / Site Plan Approval	March 17, 2023
01	ZBA / Site Plan Approval	July 22, 2022

No.: Issued For: Date:

Design Architect:
Moriyama Teshima | ARCHITECTS

Client:
ORIGINATE DEVELOPMENTS

123 Wynford Drive
Proposed Residential Development

Drawing Title:
Colour Elevation - Building B, West Part I

Scale:
As indicated

Drawn by:
M.D., A.C.

Checked by:
R.P.

Project No.:
21-048

Date:
Jan 15, 2024

Drawing No.:
dA5.13



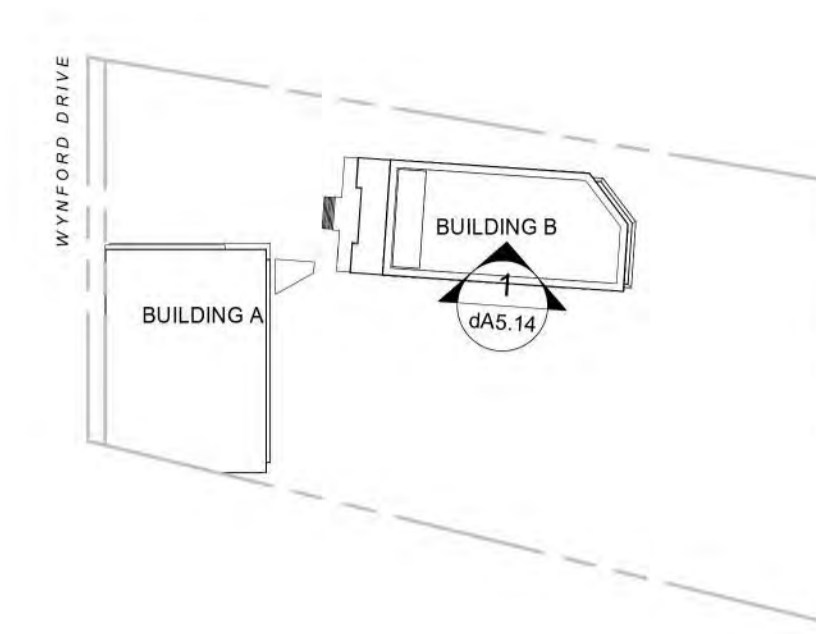
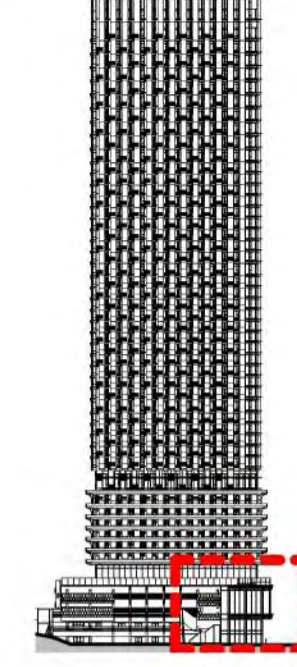
EXTERIOR FINISH SCHEDULE

- 1A GFRC (GLASS FIBER REINFORCED CONCRETE) PANEL - IVORY WHITE MATTE FINISH
- 1B GFRC (GLASS FIBER REINFORCED CONCRETE) PANEL - IVORY WHITE MATTE FINISH WITH FLUTED RIB PATTERN
- 2A BIRD FRIENDLY VISION GLASS WITH LOW E COATING IN PREFINISHED ALUMINUM FRAME IN CHAMPAGNE COLOUR
- 2B BIRD FRIENDLY CLEAR GLASS GUARD RAIL
- 2C CLEAR VISION GLASS WITH LOW E COATING IN PREFINISHED ALUMINUM FRAME IN CHAMPAGNE COLOUR

- 3 CLEAR GLASS CANOPY
- 4 ALUMINUM PICKET RAILING IN CHAMPAGNE COLOUR
- 6 PREFINISHED ALUMINUM FRAME IN CHAMPAGNE COLOUR
- 6 ALUMINUM RAILING POST IN CHAMPAGNE COLOUR
- 8 SCREENING - WOOD COLOUR
- 9 LIGHT FIXTURE - DARK SKY COMPLIANT

Exterior Finish Legend **3**
dA5.14

BUILDING B



Key Diagrams **2**
dA5.14

Authorities Having Jurisdiction
WITHOUT PREJUDICE

All Drawings, Specifications, and Related Documents are the Copyright of the Architect. The Architect retains all rights to control all uses of these documents for the intended issuance/use as identified below. Reproduction of these Documents, without permission from the Architect, is strictly prohibited. The Authorities Having Jurisdiction are permitted to use, distribute, and reproduce these drawings for the intended issuance as noted and dated below, however the extended permission to the Authorities Having Jurisdiction in no way debases or limits the Copyright of the Architect, or control of use of these documents by the Architect.

Do not scale the drawings.
 This Drawing Is Not To Be Used For Construction Until Signed By The Architect.
 Date:



20 De Boers Drive Suite 400
 Toronto, ON M3J 0H1

Revisions:		
No.:	Revision:	Date:

04	Mediation Set	Jan 15, 2024
03	Mediation Set	Dec 07, 2023
02	Re-issued for ZBA / Site Plan Approval	March 17, 2023
01	ZBA / Site Plan Approval	July 22, 2022
No.:	Issued For:	Date:

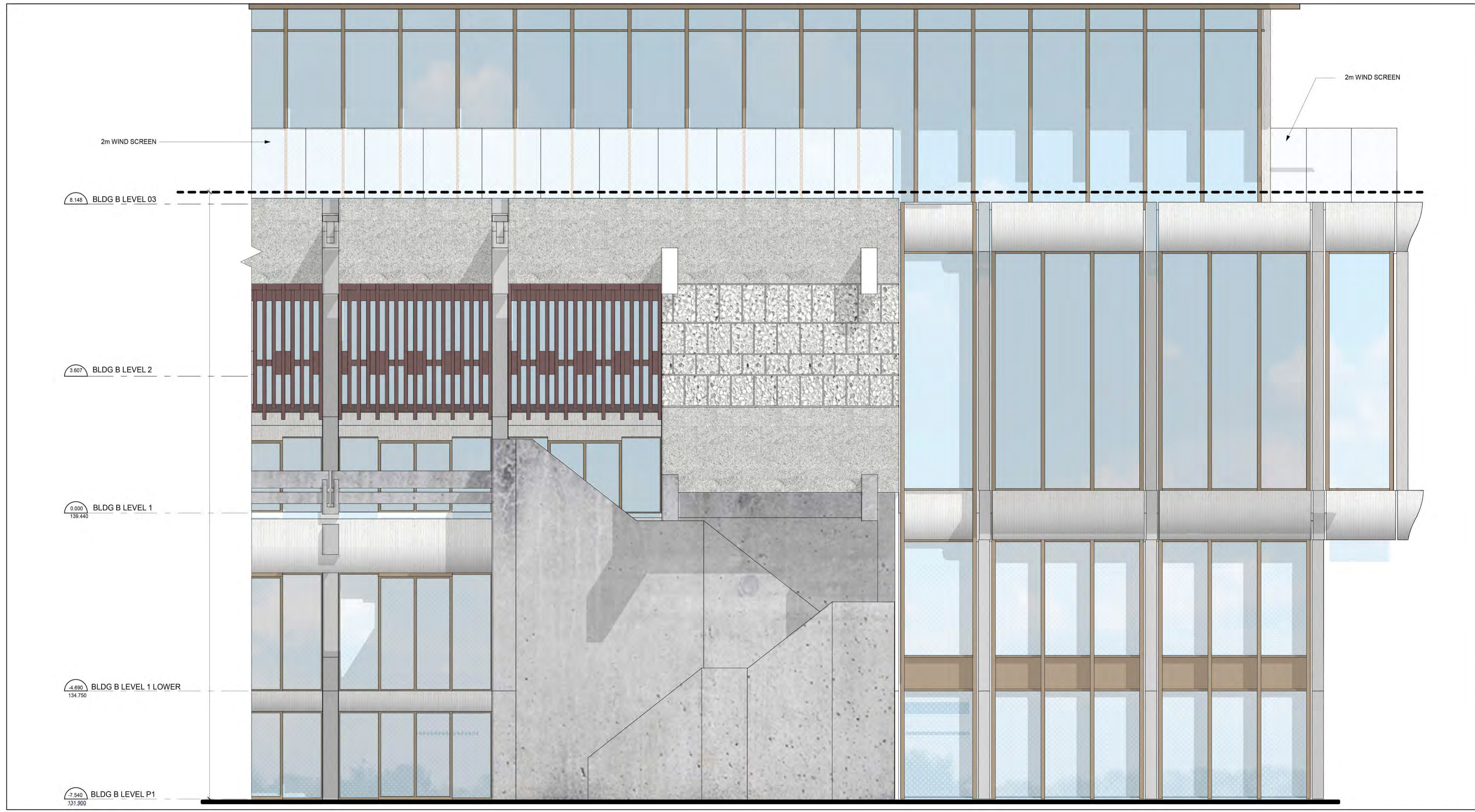
Design Architect:
Moriyama Teshima | ARCHITECTS

Client:
ORIGINATE DEVELOPMENTS

123 Wynford Drive
 Proposed Residential Development

Drawing Title:
Colour Elevation - Building B, West Part II

Scale:
 As indicated
 Drawn by:
 M.D., A.C.
 Checked by:
 R.P.
 Project No.:
 21-048
 Date:
 Jan 15, 2024
 Drawing No.:



West Elevation Building B, Part I **1**
 1 : 50 dA5.14

dA5.14

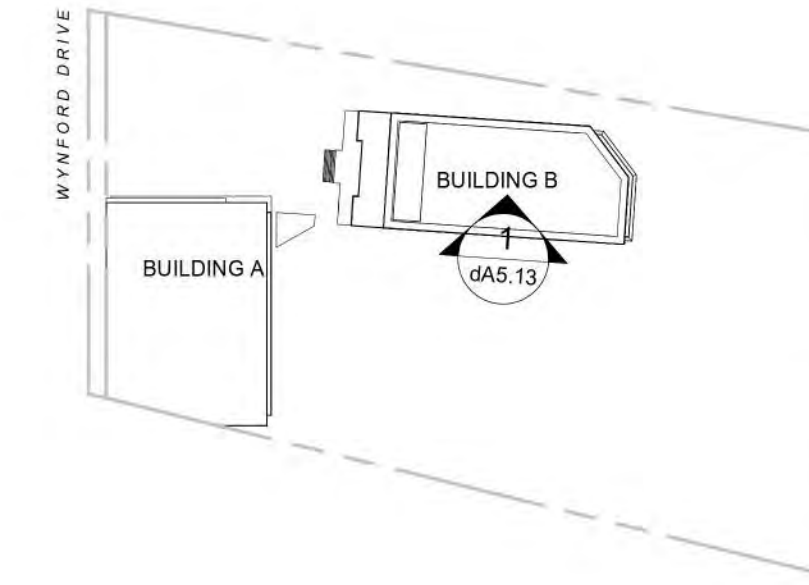
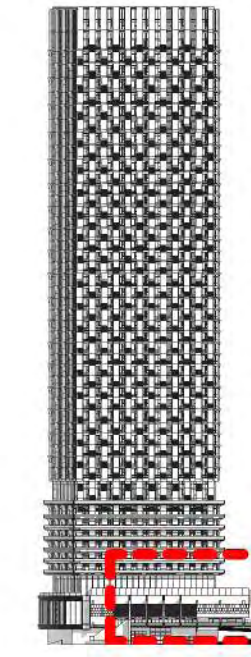
EXTERIOR FINISH SCHEDULE

- (1A) GFRC (GLASS FIBER REINFORCED CONCRETE) PANEL - IVORY WHITE MATTE FINISH
- (1B) GFRC (GLASS FIBER REINFORCED CONCRETE) PANEL - IVORY WHITE MATTE FINISH WITH FLUTED RIB PATTERN
- (2A) BIRD FRIENDLY VISION GLASS WITH LOW E COATING IN PREFINISHED ALUMINUM FRAME IN CHAMPAGNE COLOUR
- (2B) BIRD FRIENDLY CLEAR GLASS GUARD RAIL
- (2C) CLEAR VISION GLASS WITH LOW E COATING IN PREFINISHED ALUMINUM FRAME IN CHAMPAGNE COLOUR

- (3) CLEAR GLASS CANOPY
- (4) ALUMINUM PICKET RAILING IN CHAMPAGNE COLOUR
- (5) PREFINISHED ALUMINUM FRAME IN CHAMPAGNE COLOUR
- (6) ALUMINUM RAILING POST IN CHAMPAGNE COLOUR
- (8) SCREENING - WOOD COLOUR
- (9) LIGHT FIXTURE - DARK SKY COMPLIANT

Exterior Finish Legend **3**
dA5.15

BUILDING B



Key Diagrams **2**
dA5.15

WITHOUT PREJUDICE

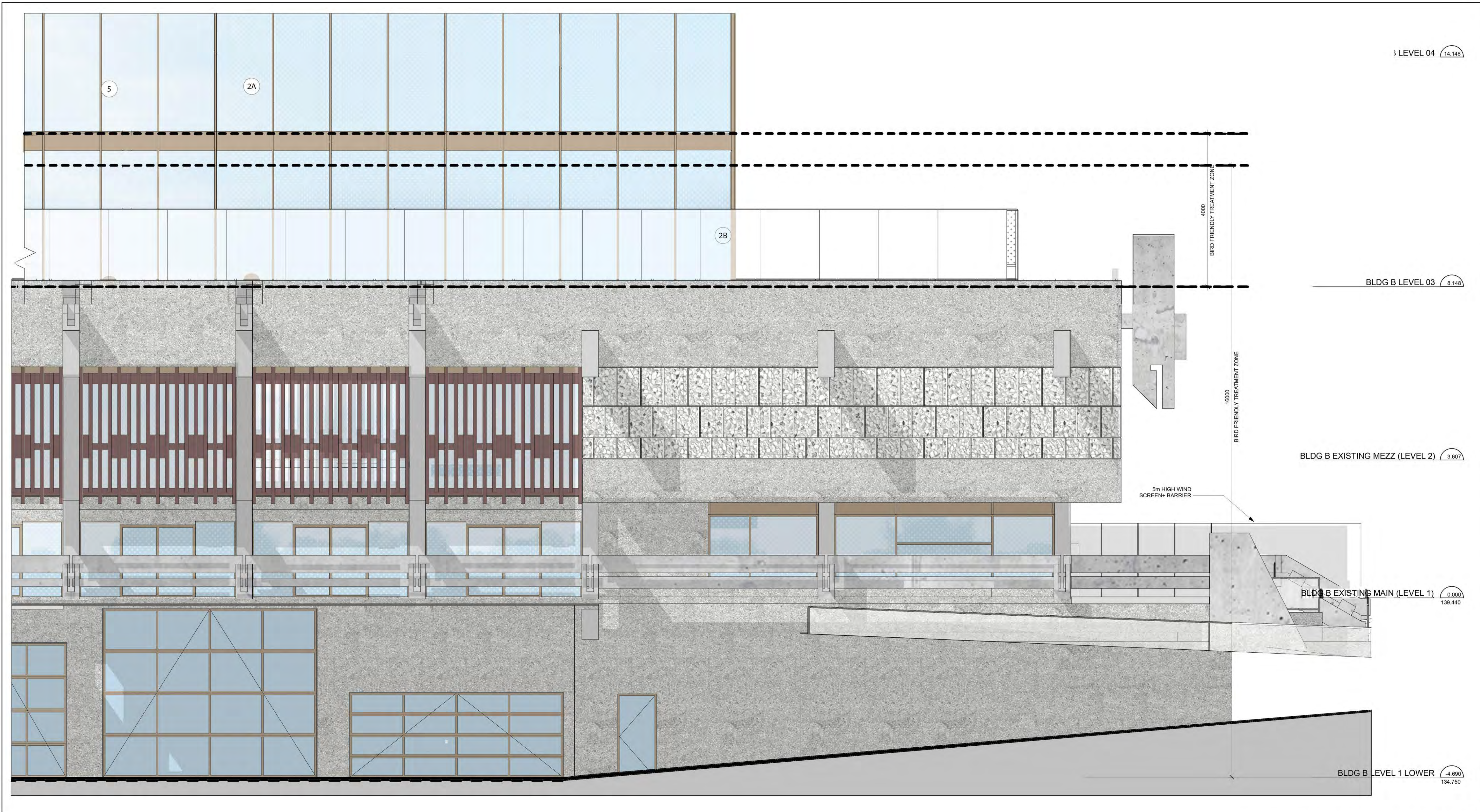
Authorities Having Jurisdiction

All Drawings, Specifications, and Related Documents are the Copyright of the Architect. The Architect retains all rights to control all uses of these documents for the intended issuance/use as identified below. Reproduction of these Documents, without permission from the Architect, is strictly prohibited. The Authorities Having Jurisdiction are permitted to use, distribute, and reproduce these drawings for the intended issuance as noted and dated below, however the extended permission to the Authorities Having Jurisdiction in no way debases or limits the Copyright of the Architect, or control of use of these documents by the Architect.

Do not scale the drawings.

This Drawing Is Not To Be Used For Construction Until Signed By The Architect.

Date:



East Elevation Building B, Part I **1**
1 : 50
dA5.15

KIRKOR
ARCHITECTS AND PLANNERS

20 De Boers Drive Suite 400
Toronto, ON M3J 0H1

No.	Revision	Date

No.	Issued For	Date
04	Mediation Set	Jan 15, 2024
03	Mediation Set	Dec 07, 2023
02	Re-issued for ZBA / Site Plan Approval	March 17, 2023
01	ZBA / Site Plan Approval	July 22, 2022

Design Architect
Moriyama Teshima | ARCHITECTS

Client:
ORIGINATE DEVELOPMENTS

123 Wynford Drive
Proposed Residential Development

Drawing Title:
Colour Elevation - Building B, East Part I

Scale:
As indicated

Drawn by:
M.D., A.C.

Checked by:
R.P.

Project No.:
21-048

Date:
Jan 15, 2024

Drawing No.:

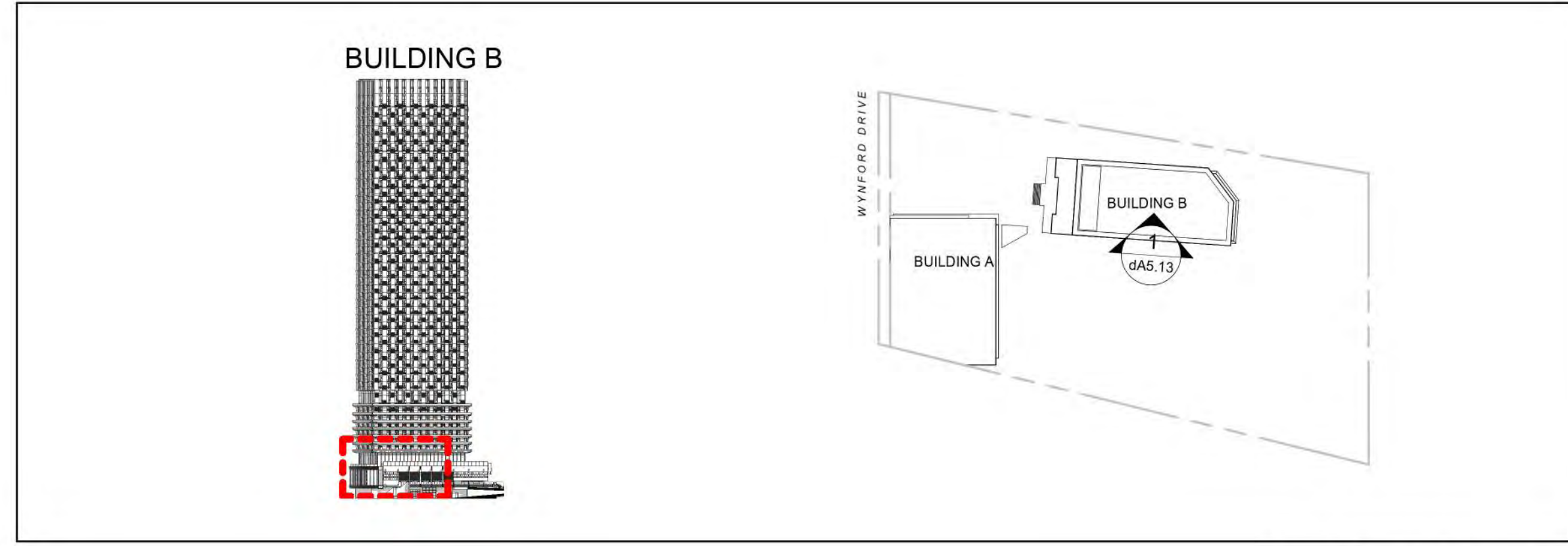
dA5.15

EXTERIOR FINISH SCHEDULE

- 1A GFRC (GLASS FIBER REINFORCED CONCRETE) PANEL - IVORY WHITE MATTE FINISH
- 1B GFRC (GLASS FIBER REINFORCED CONCRETE) PANEL - IVORY WHITE MATTE FINISH WITH FLUTED RIB PATTERN
- 2A BIRD FRIENDLY VISION GLASS WITH LOW E COATING IN PREFINISHED ALUMINUM FRAME IN CHAMPAGNE COLOUR
- 2B BIRD FRIENDLY CLEAR GLASS GUARD RAIL
- 2C CLEAR VISION GLASS WITH LOW E COATING IN PREFINISHED ALUMINUM FRAME IN CHAMPAGNE COLOUR

- 3 CLEAR GLASS CANOPY
- 4 ALUMINUM PICKET RAILING IN CHAMPAGNE COLOUR
- 5 PREFINISHED ALUMINUM FRAME IN CHAMPAGNE COLOUR
- 6 ALUMINUM RAILING POST IN CHAMPAGNE COLOUR
- 8 SCREENING - WOOD COLOUR
- 9 LIGHT FIXTURE - DARK SKY COMPLIANT

Exterior Finish Legend **3**
dA5.16



Key Diagrams **2**
dA5.16

WITHOUT PREJUDICE

All Drawings, Specifications, and Related Documents are the Copyright of the Architect. The Architect retains all rights to control all uses of these documents for the intended issuance/use as identified below. Reproduction of these Documents, without permission from the Architect, is strictly prohibited. The Authorities Having Jurisdiction are permitted to use, distribute, and reproduce these drawings for the intended issuance as noted and dated below, however the extended permission to the Authorities Having Jurisdiction in no way debases or limits the Copyright of the Architect, or control of use of these documents by the Architect.

Do not scale the drawings.
This Drawing Is Not To Be Used For Construction Until Signed By The Architect.

Date:

KIRKOR
ARCHITECTS AND PLANNERS

20 De Boers Drive Suite 400
Toronto, ON M3J 0H1

Revisions:		
No.	Revision	Date

04	Mediation Set	Jan 15, 2024
03	Mediation Set	Dec 07, 2023
02	Re-issued for ZBA / Site Plan Approval	March 17, 2023
01	ZBA / Site Plan Approval	July 22, 2022
No.	Issued For:	Date:

Design Architect:
Moriyama Teshima | ARCHITECTS

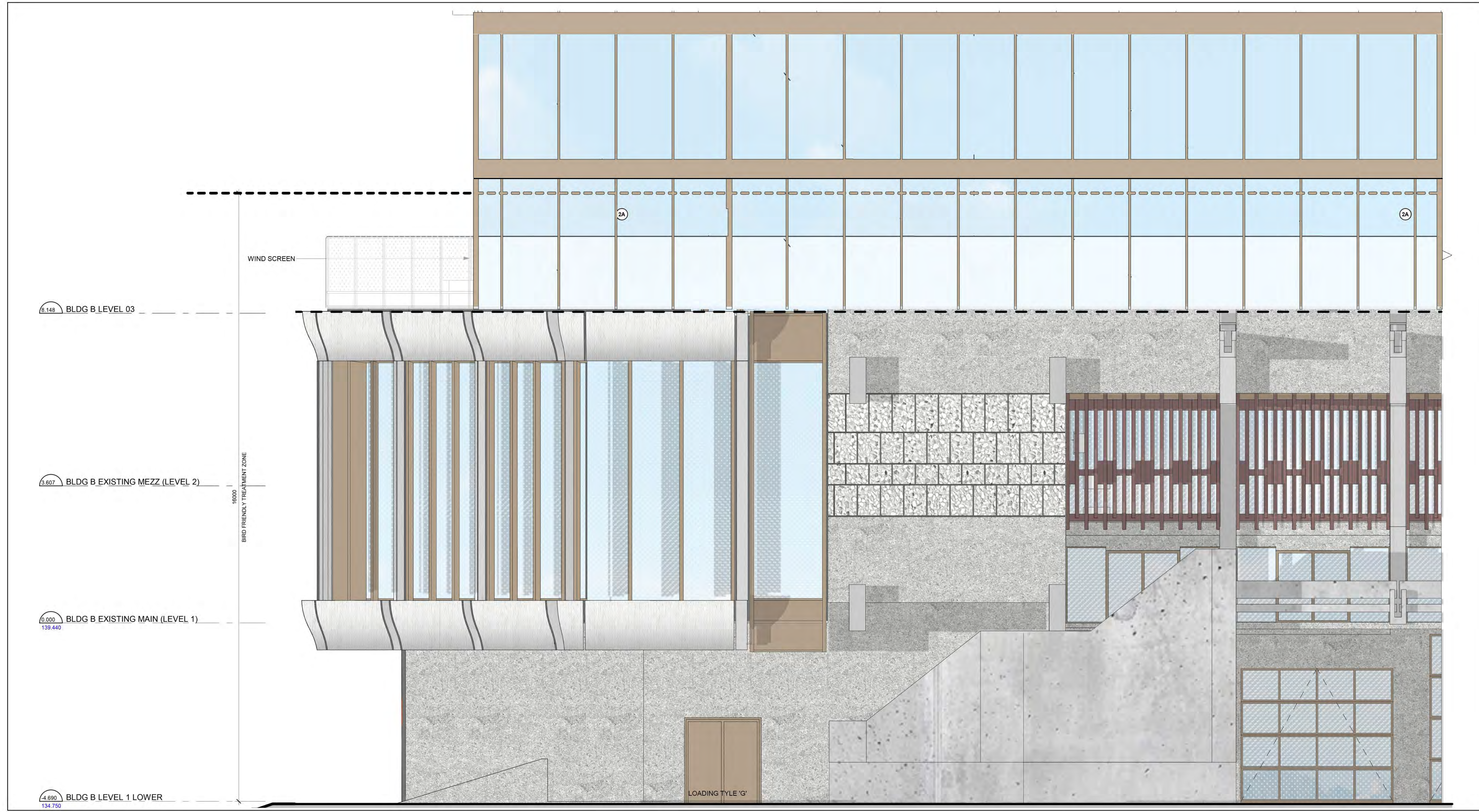
Client:
ORIGINATE DEVELOPMENTS

123 Wynford Drive
Proposed Residential Development

Drawing Title:
Colour Elevation - Building B, East Part II

Scale:
As indicated
Drawn by:
M.D., A.C.
Checked by:
R.P.
Project No.:
21-048
Date:
Jan 15, 2024
Drawing No.:

dA5.16



East Elevation Building B, Part II **1**
dA5.16
1 : 50

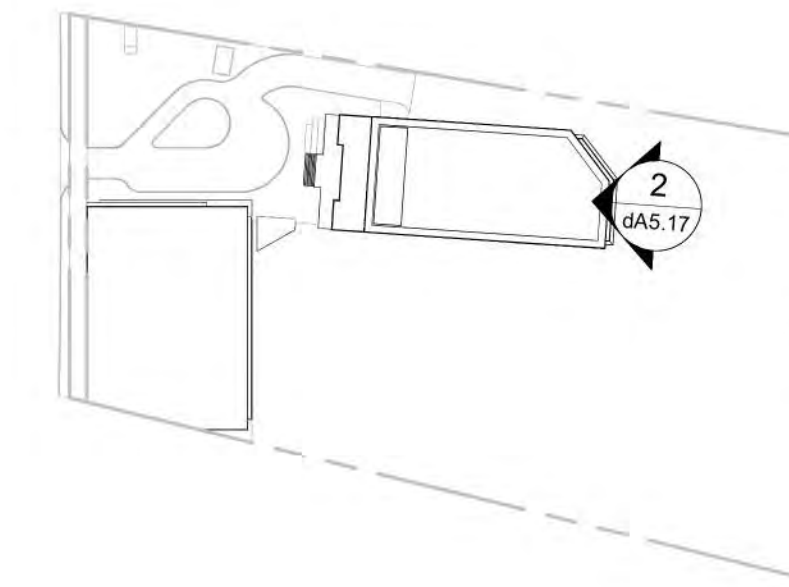
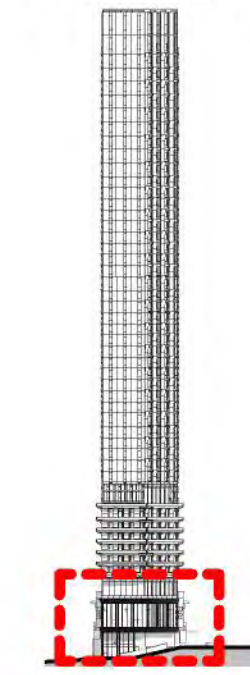
EXTERIOR FINISH SCHEDULE

- 1A GFRC (GLASS FIBER REINFORCED CONCRETE) PANEL - IVORY WHITE MATTE FINISH
- 1B GFRC (GLASS FIBER REINFORCED CONCRETE) PANEL - IVORY WHITE MATTE FINISH WITH FLUTED RIB PATTERN
- 2A BIRD FRIENDLY VISION GLASS WITH LOW E COATING IN PREFINISHED ALUMINUM FRAME IN CHAMPAGNE COLOUR
- 2B BIRD FRIENDLY CLEAR GLASS GUARD RAIL
- 2C CLEAR VISION GLASS WITH LOW E COATING IN PREFINISHED ALUMINUM FRAME IN CHAMPAGNE COLOUR

- 3 CLEAR GLASS CANOPY
- 4 ALUMINUM PICKET RAILING IN CHAMPAGNE COLOUR
- 5 PREFINISHED ALUMINUM FRAME IN CHAMPAGNE COLOUR
- 6 ALUMINUM RAILING POST IN CHAMPAGNE COLOUR
- 8 SCREENING - WOOD COLOUR
- 9 LIGHT FIXTURE - DARK SKY COMPLIANT

Exterior Finish Legend **3**
dA5.17

BUILDING B



Key Diagrams **2**
dA5.17

Authorities Having Jurisdiction
WITHOUT PREJUDICE

All Drawings, Specifications, and Related Documents are the Copyright of the Architect. The Architect retains all rights to control all uses of these documents for the intended issuance/use as identified below. Reproduction of these Documents, without permission from the Architect, is strictly prohibited. The Authorities Having Jurisdiction are permitted to use, distribute, and reproduce these drawings for the intended issuance as noted and dated below, however the extended permission to the Authorities Having Jurisdiction in no way debases or limits the Copyright of the Architect, or control of use of these documents by the Architect.

Do not scale the drawings.
 This Drawing Is Not To Be Used For Construction Until Signed By The Architect.
 Date:

KIRKOR
 ARCHITECTS AND PLANNERS
 20 De Boers Drive Suite 400
 Toronto, ON M3J 0H1

Revisions:		
No.:	Revision:	Date:

04	Mediation Set	Jan 15, 2024
03	Mediation Set	Dec 07, 2023
02	Re-issued for ZBA / Site Plan Approval	March 17, 2023
01	ZBA / Site Plan Approval	July 22, 2022
No.:	Issued For:	Date:

Design Architect:
Moriyama Teshima | ARCHITECTS

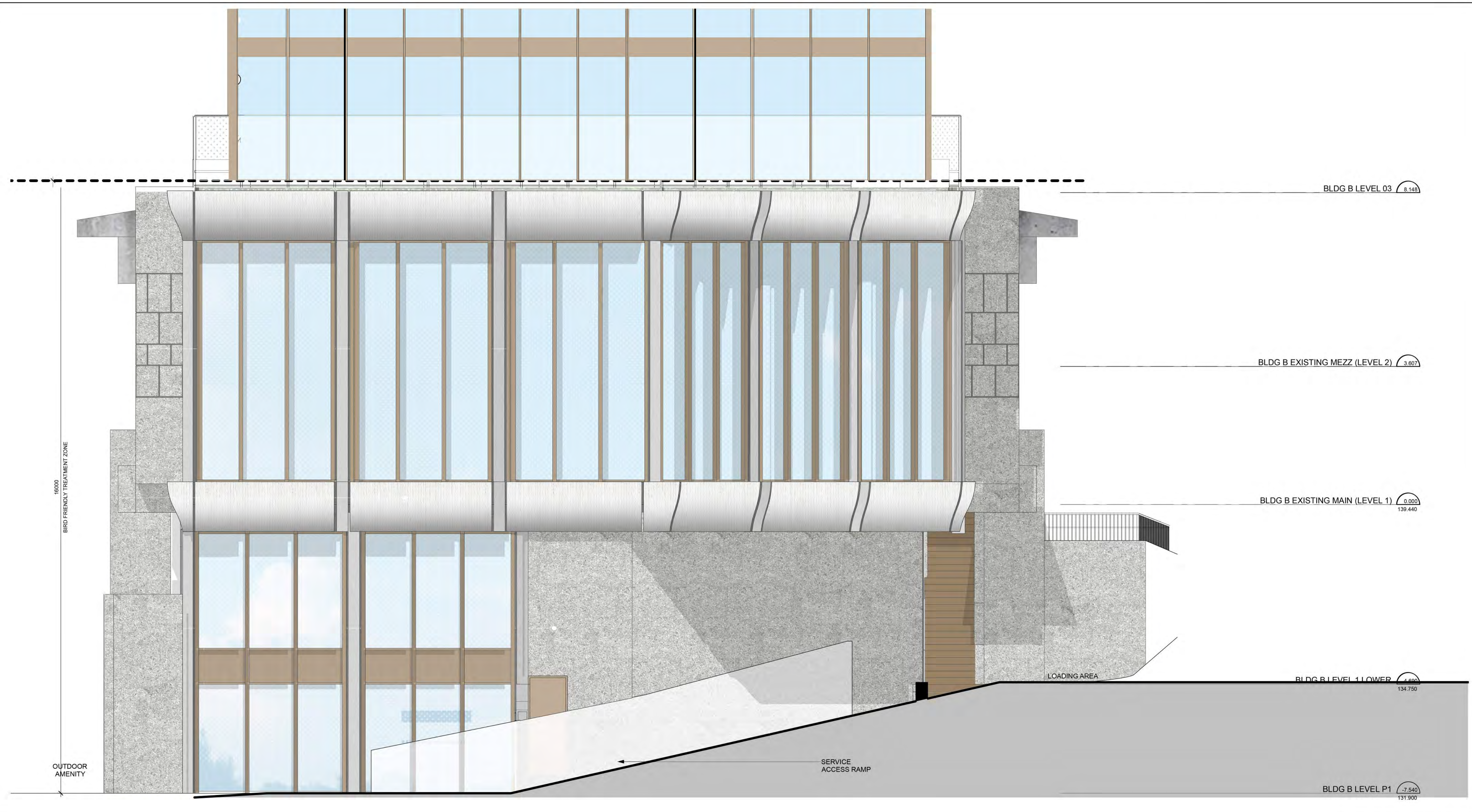
Client:
ORIGINATE DEVELOPMENTS

123 Wynford Drive
 Proposed Residential Development

Drawing Title:
Colour Elevation - Building B, South

Scale:
 As indicated
 Drawn by:
 M.D., A.C.
 Checked by:
 R.P.
 Project No.:
 21-048
 Date:
 Jan 15, 2024
 Drawing No.:

dA5.17



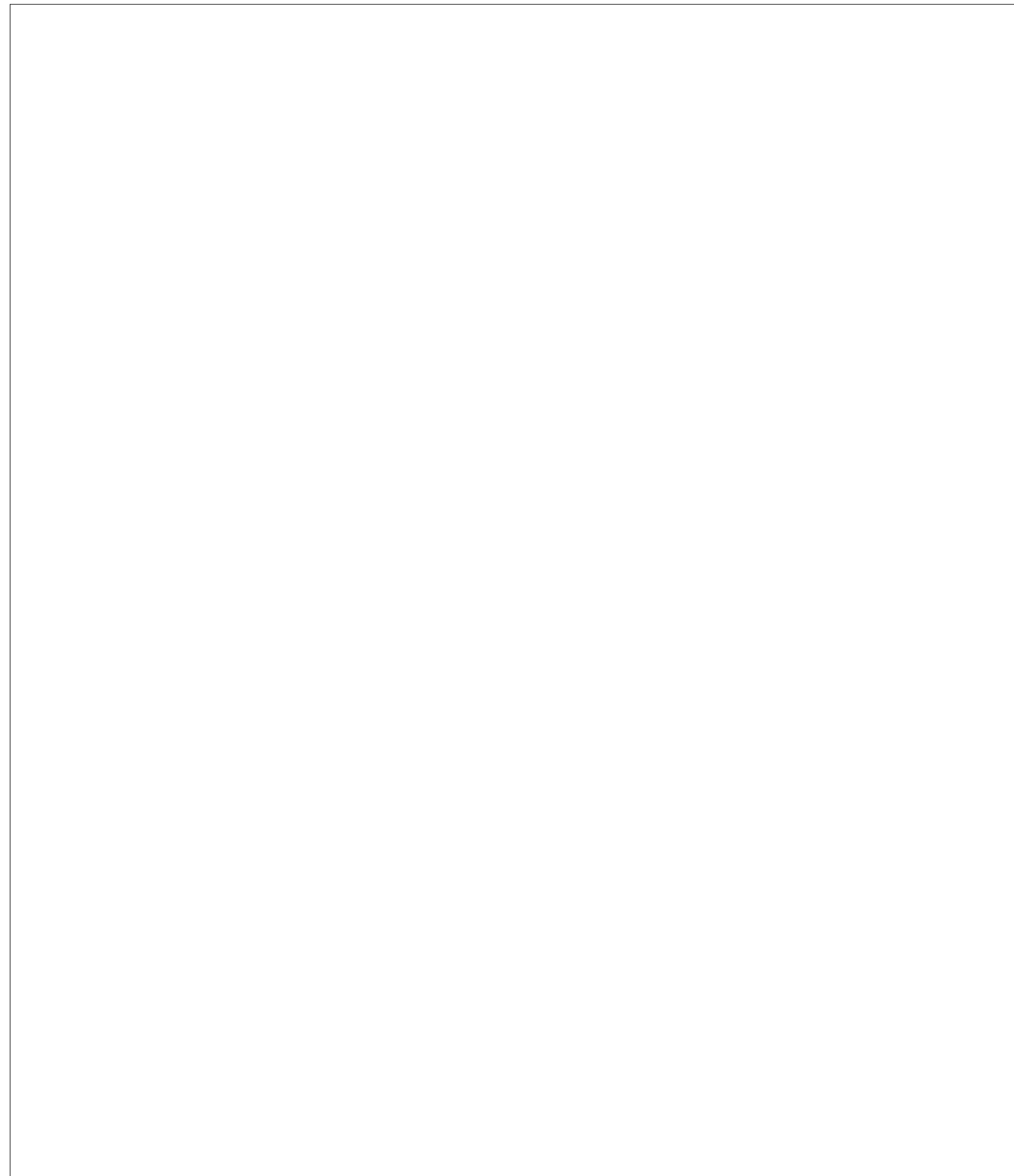
South Elevation **3**
 1 : 50
 dA5.17



View from Ravine 3
dA7.01



East Wynford Dr. View 2
dA7.01



Southwest Bird Eye View 1
dA7.01

WITHOUT PREJUDICE

All Drawings, Specifications, and Related Documents are the Copyright of the Architect. The Architect retains all rights to control all uses of these documents for the intended issuance/use as identified below. Reproduction of these Documents, without permission from the Architect, is strictly prohibited. The Authorities Having Jurisdiction are permitted to use, distribute, and reproduce these drawings for the intended issuance as noted and dated below, however the extended permission to the Authorities Having Jurisdiction in no way debases or limits the Copyright of the Architect, or control of use of these documents by the Architect.

Do not scale the drawings.
This Drawing Is Not To Be Used For Construction Until Signed By The Architect.

Date:

KIRKOR
ARCHITECTS AND PLANNERS

20 De Boers Drive Suite 400
Toronto, ON M3J 0H1

Revisions:		
No.:	Revision:	Date:

04	Mediation Set	Jan 15, 2024
03	Mediation Set	Dec 07, 2023
02	Re-issued for ZBA / Site Plan Approval	March 17, 2023
01	ZBA / Site Plan Approval	July 22, 2022
No.:	Issued For:	Date:

Design Architect:
Moriyama Teshima | ARCHITECTS

Client:
ORIGINATE DEVELOPMENTS

123 Wynford Drive
Proposed Residential Development

Drawing Title:
Perspectives

Scale:
Drawn by:
MTA
Checked by:
B.F.
Project No.:
21-048
Date:
Jan 15, 2024
Drawing No.:

dA7.01

Plot Date: 1/15/2024 4:32:38 PM File Path: C:\Users\MTA\Documents\21-048\123 WYNFORD DR_01\2024_01_15_048_PERSPECTIVES.dwg



Exist. West Elevation 1
dA8.01



Exist. West Elevation 1
dA8.01



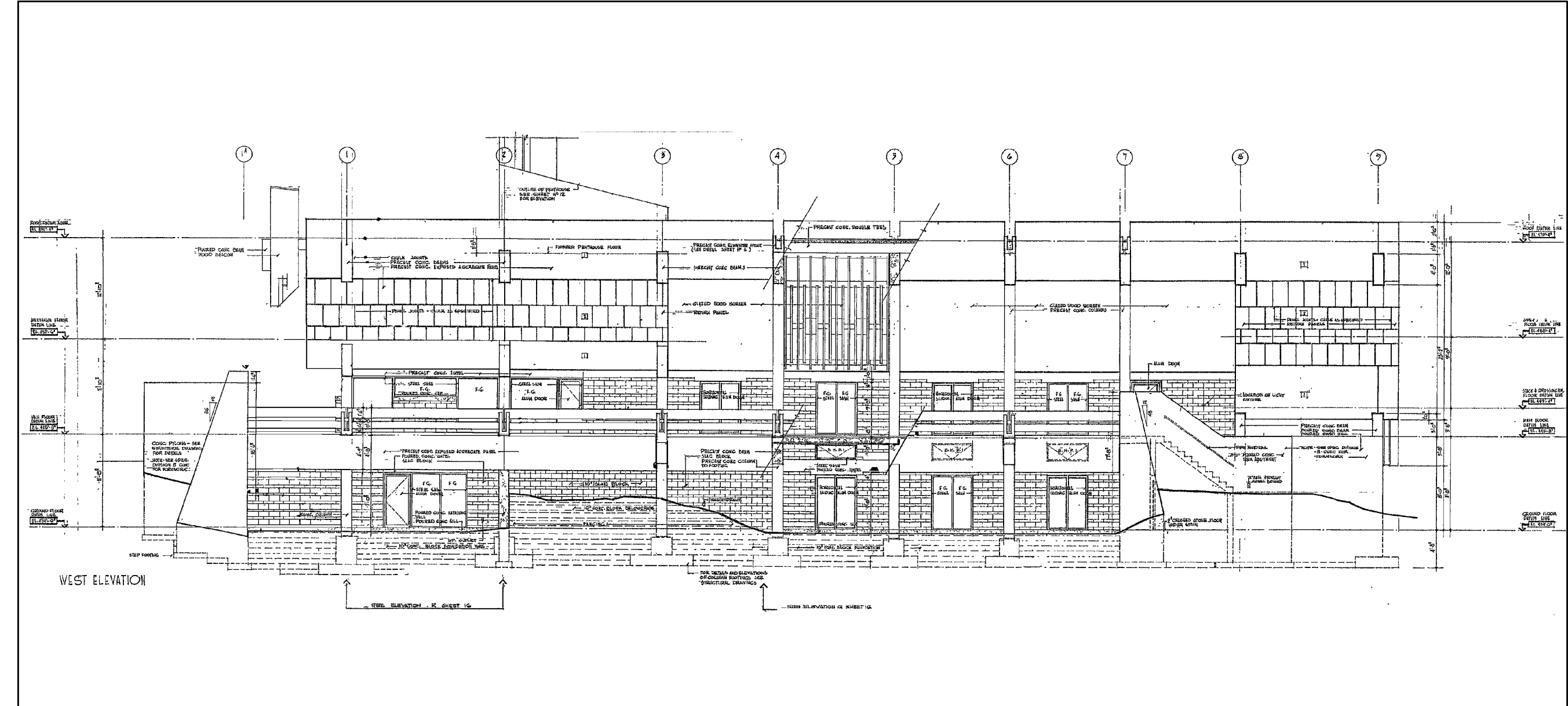
Exist. East Elevation 1
dA8.01



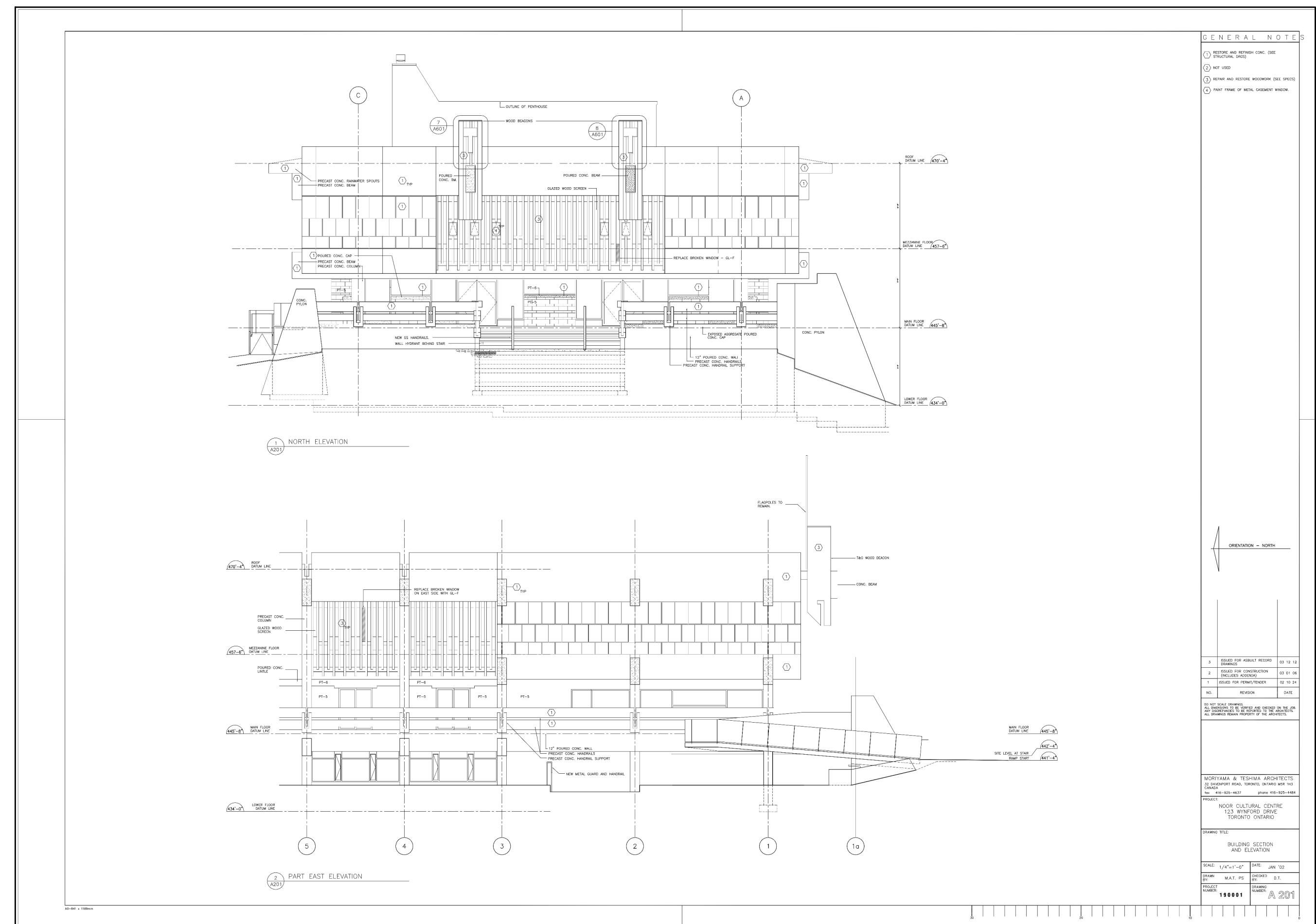
Exist. East Elevation 1
dA8.01



Exist. North Elevation 1
dA8.01



Exist. West Elevation 1
dA8.01



Exist. Building Elevations 1
dA8.01

Authorities Having Jurisdiction
WITHOUT PREJUDICE

All Drawings, Specifications, and Related Documents are the Copyright of the Architect. The Architect retains all rights to control all uses of these documents for the intended issuance/use as identified below. Reproduction of these Documents, without permission from the Architect, is strictly prohibited. The Authorities Having Jurisdiction are permitted to use, distribute, and reproduce these drawings for the intended issuance as noted and dated below, however the extended permission to the Authorities Having Jurisdiction in no way debases or limits the Copyright of the Architect, or control of use of these documents by the Architect.

Do not scale the drawings.
This Drawing Is Not To Be Used For Construction Until Signed By The Architect.

Date:

KIRKOR
ARCHITECTS AND PLANNERS

20 De Boers Drive Suite 400
Toronto, ON M3J 0H1

Revisions:
No.: Revision: Date:

04	Mediation Set	Jan 15, 2024
03	Mediation Set	Dec 07, 2023
02	Re-issued for ZBA / Site Plan Approval	March 17, 2023
01	ZBA / Site Plan Approval	July 22, 2022

No.: Issued For: Date:

Design Architect:
Moriyama Teshima | ARCHITECTS

Client:
ORIGINATE DEVELOPMENTS

123 Wynford Drive
Proposed Residential Development

Drawing Title:
Existing Building - Elevations

Scale:

Drawn by:
M.D., S.A.
Checked by:
B.F.
Project No.:
21-048
Date:
Jan 15, 2024
Drawing No.:

dA8.01