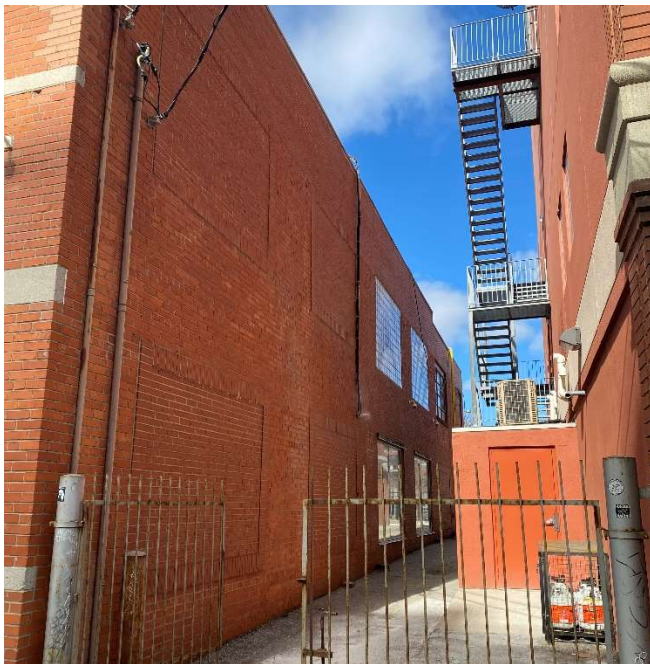


**PUBLIC ATTACHMENT 2
PHOTOGRAPHS**



Primary (south) elevation of 778 King Street West (Heritage Planning, 2022).



East elevation of 778 King Street West, viewed from the public realm



Northeastward view of 778 King Street West Context. West elevation in view.



Primary South Elevation of 778 King Street West in 2013 with divided lite windows. Divided (simulated) lite windows proposed to be reinstated at this façade.