

HIA EXTRACTS

50 EGLINTON AVEUNE WEST



South elevation: Detail showing relationship between adjacent, and supplanted volumes along Eglinton Avenue West.

(Heritage Impact Assessment, GBCA Architects, March 2024)



East elevation: Detail showing the relationship between the retained elevation along Duplex Avenue and the proposed tower above.

(Heritage Impact Assessment, GBCA Architects, March 2024)



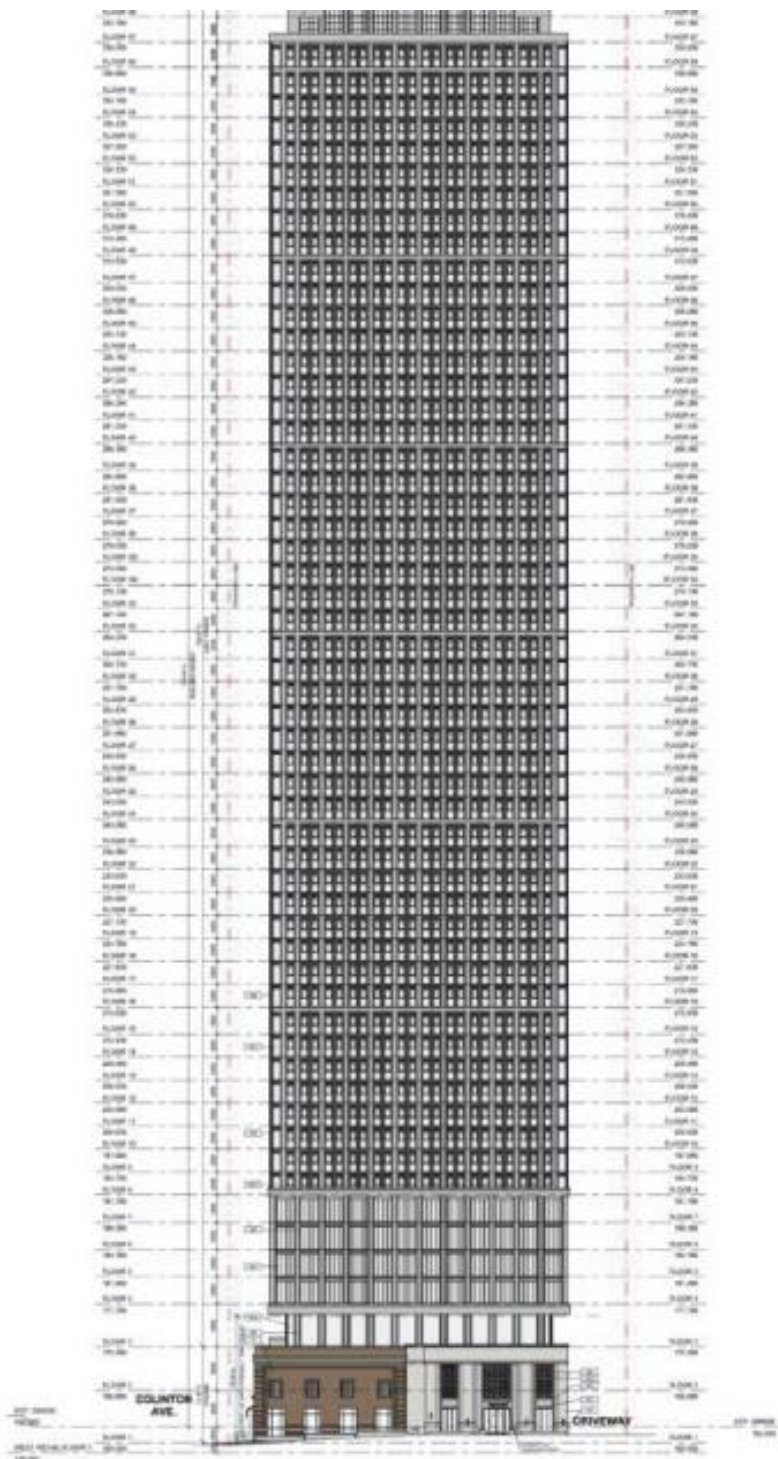
South elevation: Showing the retained elevation. The existing metal entrance doors will be pinned in a permanently open position, and a sympathetic glazed entrance will be inserted within the existing opening.

(Heritage Impact Assessment, GBCA Architects, March 2024)



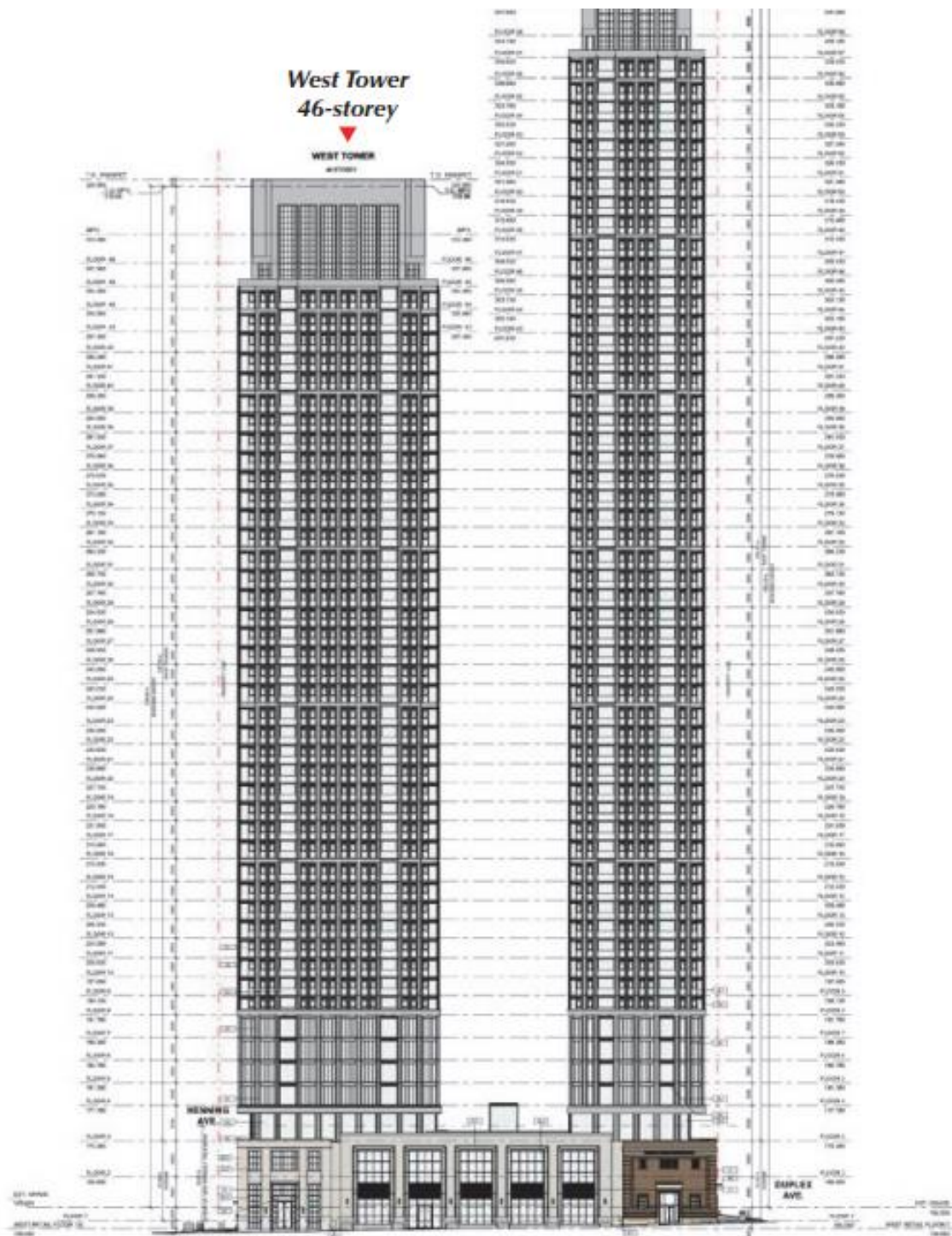
East elevation: Showing the retained elevation with proposed openings along the sloping grade.

(Heritage Impact Assessment, GBCA Architects, March 2024)



East elevation: showing the connection between the retained structure at 50 Eglinton along Duplex Avenue. The adjacent masonry structure features a modest recess before extending towards the property line, providing differentiation between the planar elevations.

(Heritage Impact Assessment, GBCA Architects, March 2024)



South elevation: Showing the proposed podium with a 5-bay central structure that defines the block between Henning Street and Duplex Avenue, flanked on either end by symmetrical volumes - to the east, the retained structure at 50 Eglinton West and to the east, a new volume connected to the west tower. This creates a cohesive block with the east tower relating to Duplex Avenue and the west tower relating to Eglinton Avenue West.

(Heritage Impact Assessment, GBCA Architects, March 2024)