

This drawing, as an instrument of service, is provided by and is the property of Turner Fleischer Architects Inc. The contractor must verify and accept responsibility for all dimensions and conditions on site and must notify Turner Fleischer Architects Inc. of any variations from the supplied information. This drawing is not to be scaled. The architect is not responsible for the accuracy of survey, structural, mechanical, electrical, etc., information shown on this drawing. Refer to the contract documents for the complete and binding terms and conditions. The contractor must conform applicable codes and requirements of authorities having jurisdiction. The contractor working from drawings not specifically marked "For Construction" must assume full responsibility and bear costs for any corrections or damages resulting from his work.

1	PRECAST OR EQUIVALENT - DARK BROWN
2	PRECAST OR EQUIVALENT - DARK GREY
3	SPANDREL PANEL - DARK GREY
4	ALUMINUM MULLION - DARK GREY
5	CLEAR GLAZING
6	CLEAR GLAZING TREATED
7	BALCONY DIVIDER GLAZING
8	CLEAR BALCONY GLAZING
9	CLEAR BALCONY GLAZING TREATED
10	METAL PANEL - DARK GREY
11	METAL PANEL - BRASS
12	LOUVERS - DARK GREY



6	2024-08-19	ISSUED FOR ZBA/SPA SUBMISSION	AAF
#	DATE	DESCRIPTION	BY

4630 Kingston Road, Scarborough, ON

DRAWING

SOUTH ELEVATION

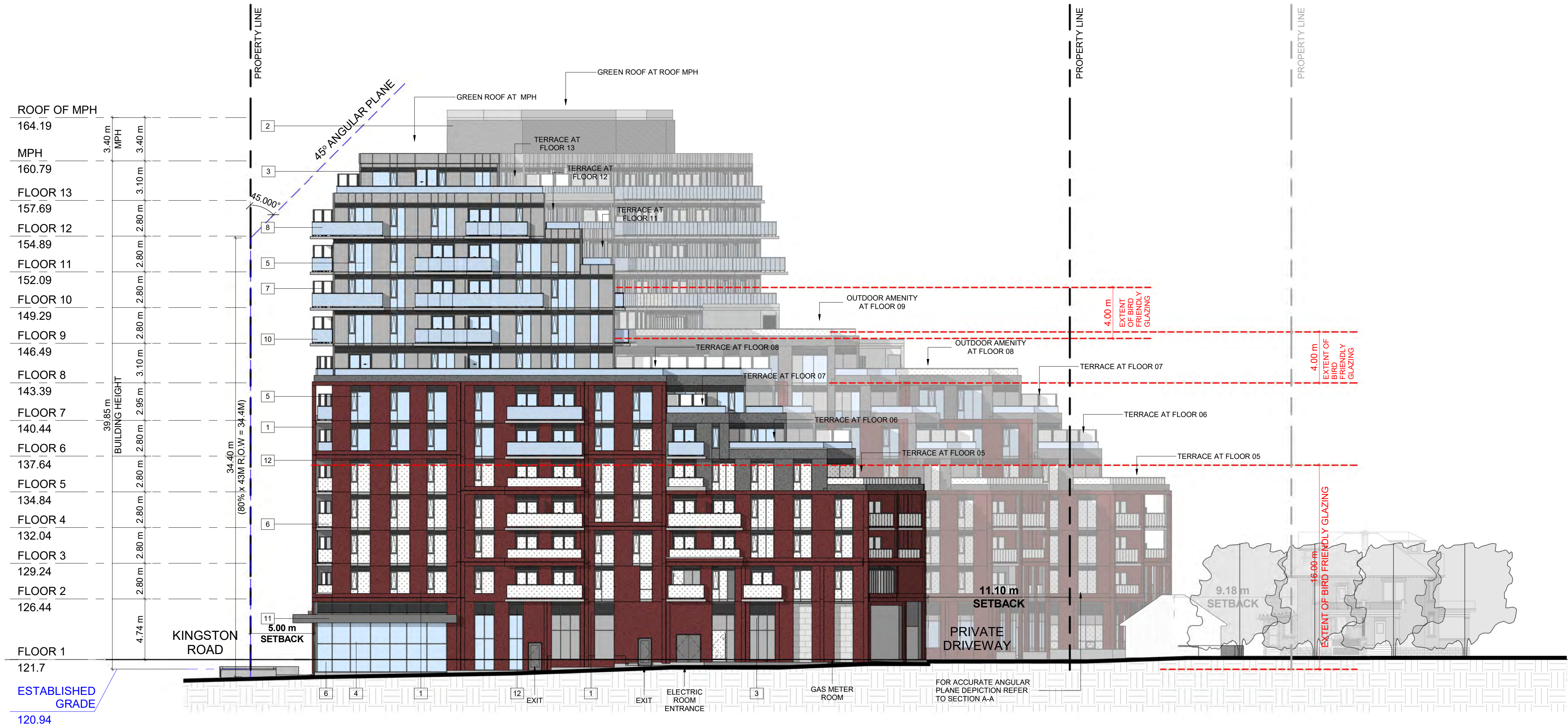
PROJECT NO. 21.129CS	
PROJECT DATE 2024-05-24	
DRAWN BY DSK	
CHECKED BY AYU	
SCALE As indicated	

DRAWING NO. SPA302	REV. 6
------------------------------	------------------

This drawing, as an instrument of service, is provided by and is the property of Turner Fleischer Architects Inc. The contractor must verify and accept responsibility for all dimensions and conditions on site and must notify Turner Fleischer Architects Inc. of any variations from the supplied information. This drawing is not to be scaled. The architect is not responsible for the accuracy of survey, structural, mechanical, electrical, etc. information shown on this drawing. Refer to the appropriate consultant drawings before proceeding with the work. Contractor must conform to all applicable codes and requirements of authorities having jurisdiction. The contractor working from drawings not specifically marked "For Contractor" must assume full responsibility and bear costs for any corrections or damages resulting from his work.

EXTERIOR FINISH LEGEND

1	PRECAST OR EQUIVALENT - DARK BROWN
2	PRECAST OR EQUIVALENT - DARK GREY
3	SPANDREL PANEL - DARK GREY
4	ALUMINUM MULLION - DARK GREY
5	CLEAR GLAZING
6	CLEAR GLAZING TREATED
7	BALCONY DIVIDER GLAZING
8	CLEAR BALCONY GLAZING
9	CLEAR BALCONY GLAZING TREATED
10	METAL PANEL - DARK GREY
11	METAL PANEL - BRASS
12	LOUVERS - DARK GREY



1 EAST ELEVATION
1:200

6	2024-09-19	ISSUED FOR ZBA/SPA SUBMISSION	AAF
#	DATE	DESCRIPTION	BY



PROJECT
4630 Kingston Road, Scarborough, ON

4630 Kingston Road, Scarborough, ON

DRAWING

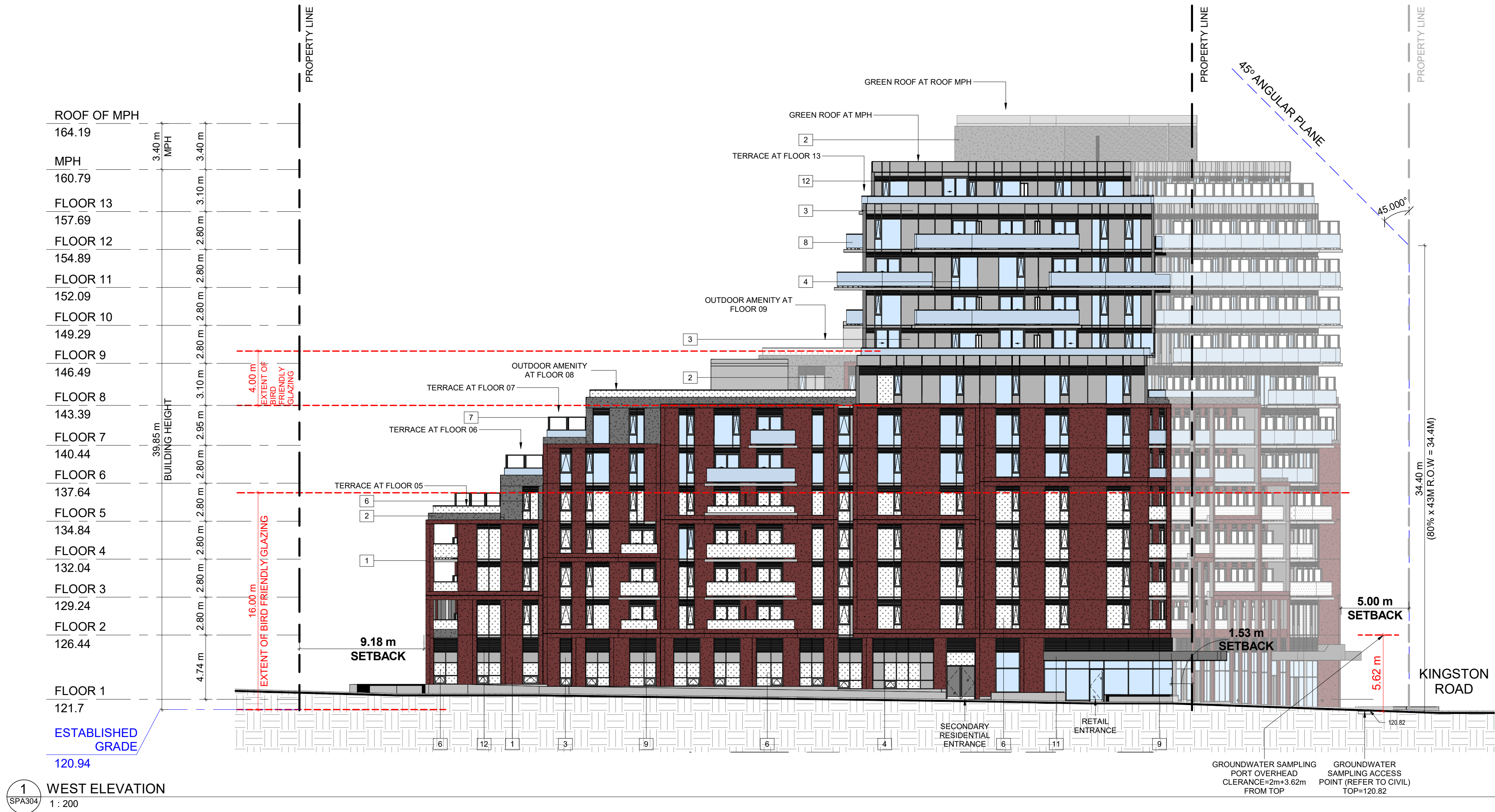
EAST ELEVATION

PROJECT NO.
21.129CS
PROJECT DATE
2024-05-24
DRAWN BY
DSK
CHECKED BY
AYU
SCALE
As indicated

DRAWING NO.
SPA303

This drawing, as an instrument of service, is provided by and is the property of Turner Fleischer Architects Inc. The contractor must verify and accept responsibility for all dimensions and conditions on site and must notify Turner Fleischer Architects Inc. of any variations from the supplied information. This drawing is not to be scaled. The architect is not responsible for the accuracy of survey, structural, mechanical, electrical, etc., information shown on this drawing. Refer to the appropriate consultant's drawings before proceeding with the work. Contractor must conform to all applicable codes and requirements of authorities having jurisdiction. The contractor working from drawings not specifically marked "For Construction" must assume full responsibility and bear costs for any corrections or damages resulting from his work.

EXTERIOR FINISH LEGEND	
1	PRECAST OR EQUIVALENT - DARK BROWN
2	PRECAST OR EQUIVALENT - DARK GREY
3	SPANDREL PANEL - DARK GREY
4	ALUMINUM MULLION - DARK GREY
5	CLEAR GLAZING
6	CLEAR GLAZING TREATED
7	BALCONY DIVIDER GLAZING
8	CLEAR BALCONY GLAZING
9	CLEAR BALCONY GLAZING TREATED
10	METAL PANEL - DARK GREY
11	METAL PANEL - BRASS
12	LOUVERS - DARK GREY



6	2024-09-19	ISSUED FOR ZBA/SPA SUBMISSION	AAF
#	DATE	DESCRIPTION	BY



PROJECT
4630 Kingston Road, Scarborough, ON
4630 Kingston Road, Scarborough, ON

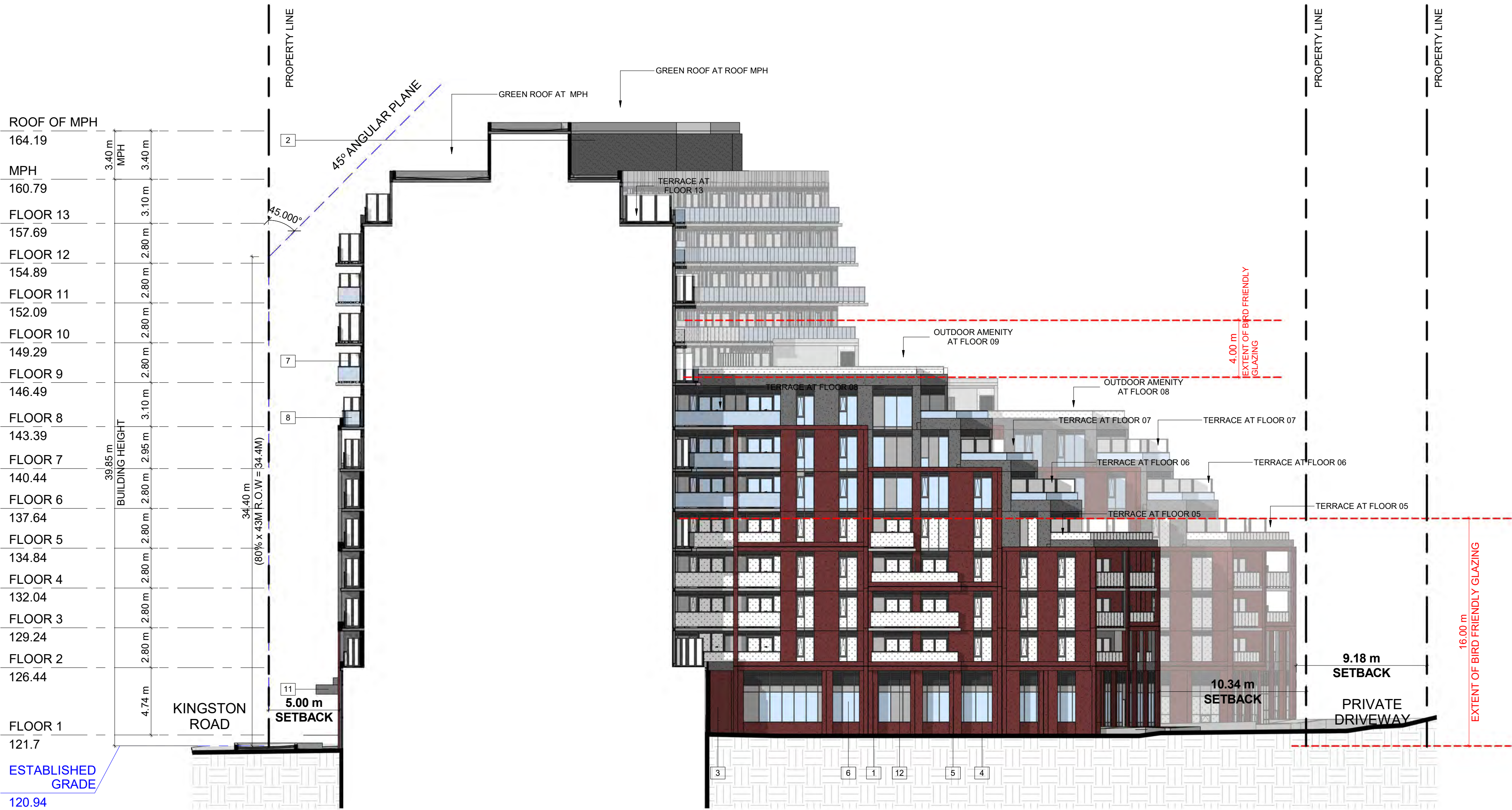
DRAWING
WEST ELEVATION

PROJECT NO. 21.129CS	
PROJECT DATE 2024-05-24	
DRAWN BY DSK	
CHECKED BY AYU	
SCALE As indicated	
DRAWING NO. SPA304	

This drawing, as an instrument of service, is provided by and is the property of Turner Fleischer Architects Inc. The contractor must verify and accept responsibility for all dimensions and conditions on site and must notify Turner Fleischer Architects Inc. of any variations from the supplied information. This drawing is not to be scaled. The architect is not responsible for the accuracy of survey, structural, mechanical, electrical, etc., information shown on this drawing. Refer to the appropriate consultant's drawings before proceeding with the work. Contractor must conform to all applicable codes and requirements of authorities having jurisdiction. The contractor working from drawings not specifically marked "For Contractor" must assume full responsibility and bear costs for any corrections or damages resulting from his work.

EXTERIOR FINISH LEGEND

1	PRECAST OR EQUIVALENT - DARK BROWN
2	PRECAST OR EQUIVALENT - DARK GREY
3	SPANDREL PANEL - DARK GREY
4	ALUMINUM MULLION - DARK GREY
5	CLEAR GLAZING
6	CLEAR GLAZING TREATED
7	BALCONY DIVIDER GLAZING
8	CLEAR BALCONY GLAZING
9	CLEAR BALCONY GLAZING TREATED
10	METAL PANEL - DARK GREY
11	METAL PANEL - BRASS
12	LOUVERS - DARK GREY



1 EAST ELEVATION INT 1
SPA305 1:200

8	2024-09-19	ISSUED FOR ZBA/SPA SUBMISSION	AAF
#	DATE	DESCRIPTION	BY



PROJECT
4630 Kingston Road, Scarborough, ON

4630 Kingston Road, Scarborough, ON

DRAWING

EAST ELEVATION INTERNAL 1

PROJECT NO.

21-129CS

PROJECT DATE

2024-05-24

DRAWN BY

DSK

CHECKED BY

AYU

SCALE

As indicated

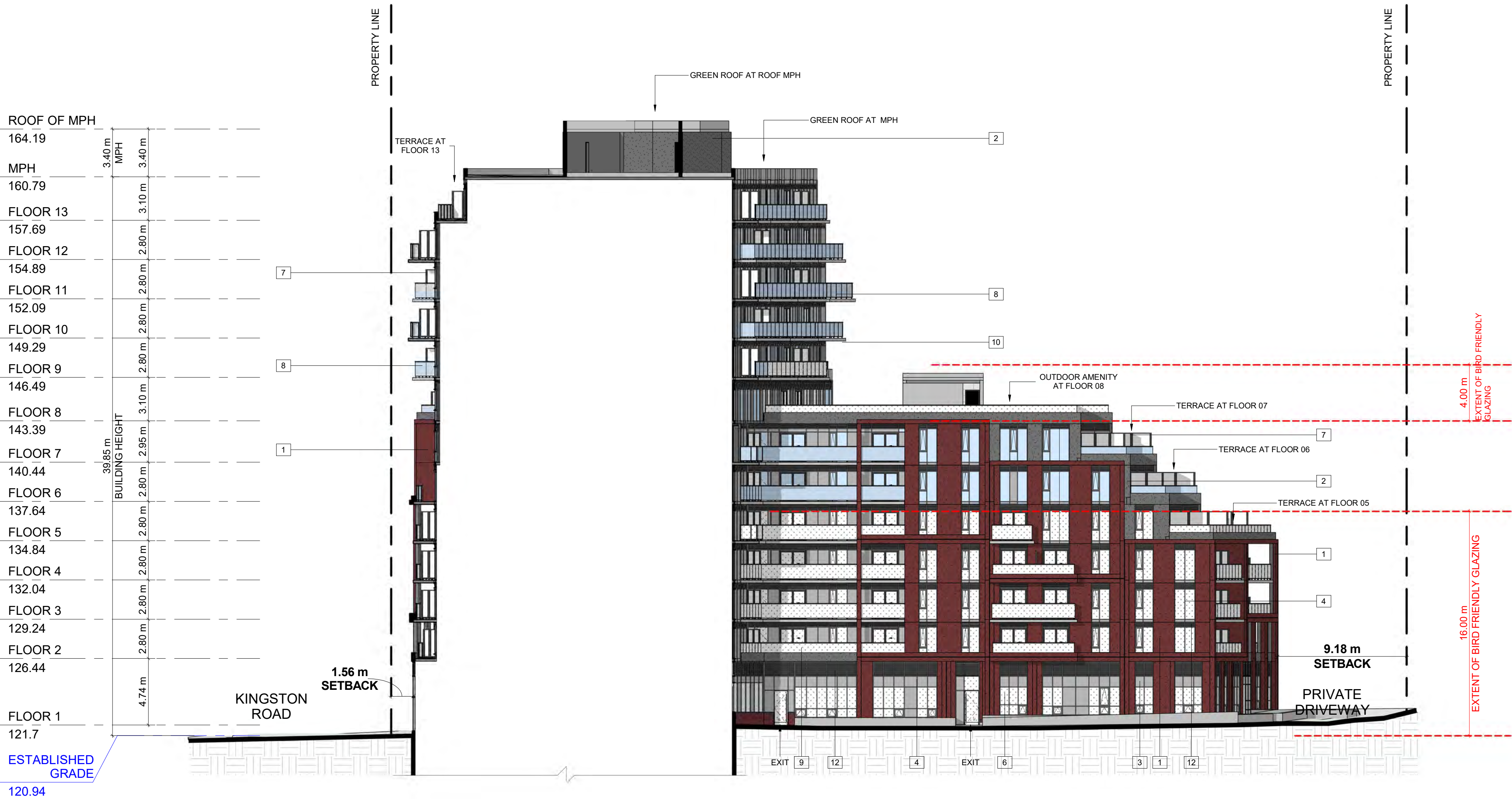
DRAWING NO.

SPA305

This drawing, as an instrument of service, is provided by and is the property of Turner Fleischer Architects Inc. The contractor must verify and accept responsibility for all dimensions and conditions on site and must notify Turner Fleischer Architects Inc. of any variations from the supplied information. This drawing is not to be scaled. The architect is not responsible for the accuracy of survey, structural, mechanical, electrical, etc., information shown on this drawing. Refer to the appropriate consultant's drawings before proceeding with the work. Contractor must conform to all applicable codes and requirements of authorities having jurisdiction. The contractor working from drawings not specifically marked "For Construction" must assume full responsibility and bear costs for any corrections or damages resulting from his work.

EXTERIOR FINISH LEGEND

1	PRECAST OR EQUIVALENT - DARK BROWN
2	PRECAST OR EQUIVALENT - DARK GREY
3	SPANDREL PANEL - DARK GREY
4	ALUMINUM MULLION - DARK GREY
5	CLEAR GLAZING
6	CLEAR GLAZING TREATED
7	BALCONY DIVIDER GLAZING
8	CLEAR BALCONY GLAZING
9	CLEAR BALCONY GLAZING TREATED
10	METAL PANEL - DARK GREY
11	METAL PANEL - BRASS
12	LOUVERS - DARK GREY



1 EAST ELEVATION INT 2
SPA308 1:200

8	2024-09-19	ISSUED FOR ZBA/SPA SUBMISSION	AAF
#	DATE	DESCRIPTION	BY



PROJECT
4630 Kingston Road, Scarborough, ON

4630 Kingston Road, Scarborough, ON

DRAWINGS
EAST ELEVATION INTERNAL 2

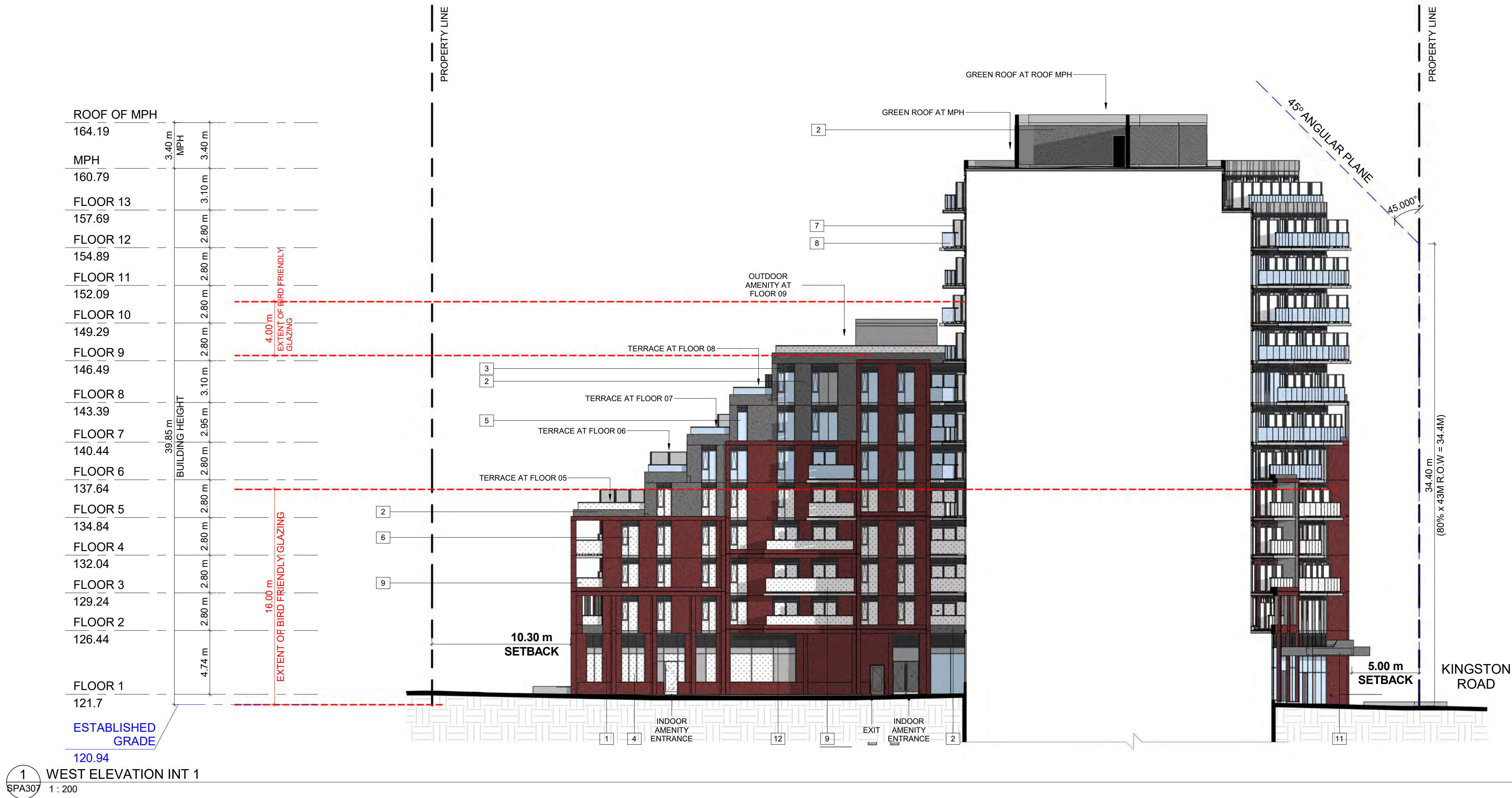
PROJECT NO. 21-129CS	
PROJECT DATE 2024-05-24	
DRAWN BY DSK	
CHECKED BY AYU	
SCALE As indicated	

DRAWING NO.
SPA306

This drawing, as an instrument of service, is provided by and is the property of Turner Fleischer Architects Inc. The contractor must verify and accept responsibility for all dimensions and conditions on site and must notify Turner Fleischer Architects Inc. of any variations from the supplied information. This drawing is not to be scaled. The architect is not responsible for the accuracy of survey, structural, mechanical, electrical, etc. information shown on this drawing. Refer to the appropriate consultant's drawings before proceeding with the work. Contractor must conform to all applicable codes and requirements of authorities having jurisdiction. The contractor working from drawings not specifically marked "For Contractor" must assume full responsibility and bear costs for any corrections or damages resulting from his work.

EXTERIOR FINISH LEGEND

1	PRECAST OR EQUIVALENT - DARK BROWN
2	PRECAST OR EQUIVALENT - DARK GREY
3	SPANDREL PANEL - DARK GREY
4	ALUMINUM MULLION - DARK GREY
5	CLEAR GLAZING
6	CLEAR GLAZING TREATED
7	BALCONY DIVIDER GLAZING
8	CLEAR BALCONY GLAZING
9	CLEAR BALCONY GLAZING TREATED
10	METAL PANEL - DARK GREY
11	METAL PANEL - BRASS
12	LOUVERS - DARK GREY



8	2024-09-19	ISSUED FOR ZBA/SPA SUBMISSION	AAF
#	DATE	DESCRIPTION	BY



PROJECT
4630 Kingston Road, Scarborough, ON

4630 Kingston Road, Scarborough, ON

DRAWINGS
WEST ELEVATION INTERNAL 1

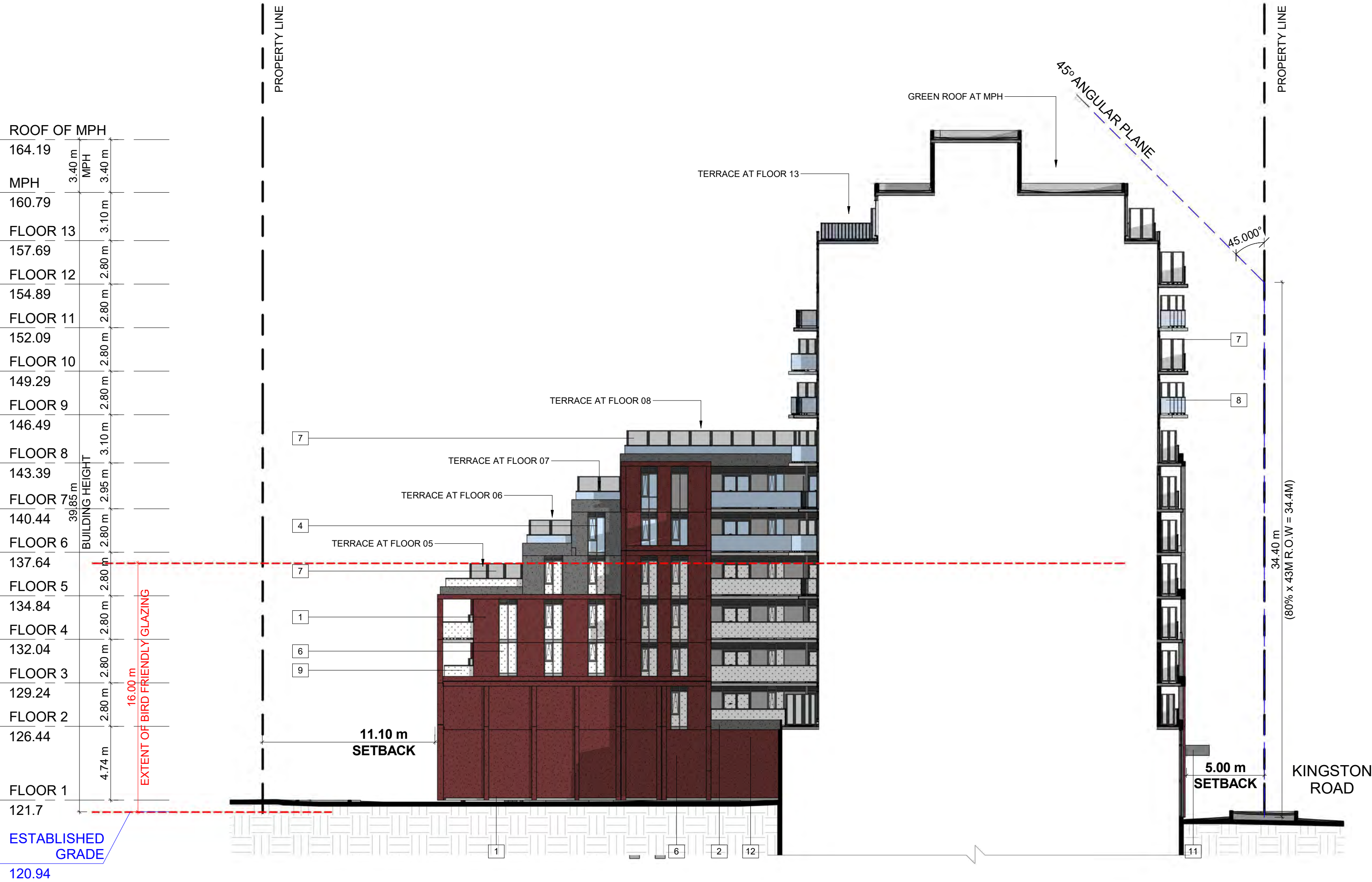
PROJECT NO. 21-129CS	
PROJECT DATE 2024-05-24	
DRAWN BY DSK	
CHECKED BY AYU	
SCALE As indicated	

DRAWING NO.
SPA307

This drawing, as an instrument of service, is provided by and is the property of Turner Fleischer Architects Inc. The contractor must verify and accept responsibility for all dimensions and conditions on site and must notify Turner Fleischer Architects Inc. of any variations from the supplied information. This drawing is not to be scaled. The architect is not responsible for the accuracy of survey, structural, mechanical, electrical, etc. information shown on this drawing. Refer to the appropriate consultant drawings before proceeding with the work. Contractor must conform to all applicable codes and requirements of authorities having jurisdiction. The contractor working from drawings not specifically marked "For Contractor" must assume full responsibility and bear costs for any corrections or damages resulting from his work.

EXTERIOR FINISH LEGEND

1	PRECAST OR EQUIVALENT - DARK BROWN
2	PRECAST OR EQUIVALENT - DARK GREY
3	SPANDREL PANEL - DARK GREY
4	ALUMINUM MULLION - DARK GREY
5	CLEAR GLAZING
6	CLEAR GLAZING TREATED
7	BALCONY DIVIDER GLAZING
8	CLEAR BALCONY GLAZING
9	CLEAR BALCONY GLAZING TREATED
10	METAL PANEL - DARK GREY
11	METAL PANEL - BRASS
12	LOUVERS - DARK GREY



1 WEST ELEVATION INT 2
SPA308 1 : 200

8	2024-09-19	ISSUED FOR ZBA/SPA SUBMISSION	AAF
#	DATE	DESCRIPTION	BY



PROJECT
4630 Kingston Road, Scarborough, ON

4630 Kingston Road, Scarborough, ON

DRAWINGS
WEST ELEVATION INTERNAL 2

PROJECT NO. 21.129CS	
PROJECT DATE 2024-05-24	
DRAWN BY DSK	
CHECKED BY AYU	
SCALE As indicated	

DRAWING NO.
SPA308

TURNER FLEISCHER

Turner Fleischer Architects Inc.
67 Leslie Road
Toronto, ON, M5B 2T8
T 416 425 2222
turnerfleischer.com

This drawing, as an instrument of service, is provided by and is the property of Turner Fleischer Architects Inc. The contractor must verify and accept responsibility for all dimensions and conditions on site and must notify Turner Fleischer Architects Inc. of any variations from the supplied information. This drawing is not to be scaled. The architect is not responsible for the accuracy of survey, structural, mechanical, electrical, etc. information shown on this drawing. Refer to the appropriate consultant drawings before proceeding with the work. The contractor must conform to all applicable codes and requirements of authorities having jurisdiction. The contractor working from drawings not specifically marked "For Construction" must assume full responsibility and bear costs for any corrections or damages resulting from the work.

EXTERIOR FINISH LEGEND

1	PRECAST OR EQUIVALENT - DARK BROWN
2	PRECAST OR EQUIVALENT - DARK GREY
3	SPANDREL PANEL - DARK GREY
4	ALUMINUM MULLION - DARK GREY
5	CLEAR GLAZING
6	CLEAR GLAZING TREATED
7	BALCONY DIVIDER GLAZING
8	CLEAR BALCONY GLAZING
9	CLEAR BALCONY GLAZING TREATED
10	METAL PANEL - DARK GREY
11	METAL PANEL - BRASS
12	LOUVERS - DARK GREY

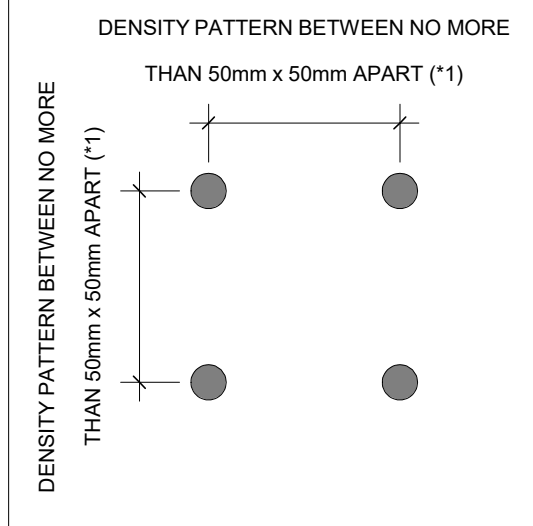


TORONTO GREEN STANDARDS BIRD FRIENDLY GLASS

GENERAL NOTES IN ACCORDANCE WITH THE BIRD-FRIENDLY DEVELOPMENT GUIDELINES (FIRST 16 METERS ABOVE GRADE AND 4 METERS ABOVE GREEN FEATURE):

PROVISION OF VISUAL MARKERS
VISUAL MARKERS TO ALERT BIRDS WILL BE PROVIDED. METHODS OF ACHIEVING THIS ARE AS FOLLOWS:
- VISUAL MARKERS APPLIED TO GLASS WITH A MAXIMUM SPACING OF 50mm x 50mm
- LOW REFLECTANCE OR OPAQUE MATERIALS
- BUILDING-INTERGRATED STRUCTURES TO MUTE REFLECTIONS ON GLASS SURFACES

REDUCTION OF LIGHT POLLUTION
- REDUCTION OF LIGHT POLLUTION FROM INTERIOR LIGHTS, PARTICULARLY DURING MIGRATION PERIODS
- SELECTION OF APPROPRIATE EXTERNAL LIGHTING FIXTURES TO ELIMINATE DIRECT UPWARDS LIGHT. REDUCE SPILL LIGHT AND OPTIMIZE USEFUL LIGHT



DETAIL NOTES
- FRITTED GLASS WILL BE TREATED WITH A DENSITY PATTERN OF VISUAL MARKERS NO MORE THAN 50mm X 50mm APART FOR THE FIRST 16M ABOVE GRADE. (TORONTO GREEN STANDARD EC4.1)

#	DATE	ISSUED FOR ZBA/SPA SUBMISSION	DESCRIPTION	AA#	BY
---	------	-------------------------------	-------------	-----	----



PROJECT
4630 Kingston Road, Scarborough, ON

4630 Kingston Road, Scarborough, ON

DRAWING

1 TO 50 ELEVATIONS

PROJECT NO.

21-129CS

PROJECT DATE

2024-05-24

DRAWN BY

DSK

CHECKED BY

AYU

SCALE

As indicated

DRAWING NO.

SPA311



1 SOUTH ELEVATION 1/50-1
SPA311 1 : 50

TURNER FLEISCHER

Turner Fleischer Architects Inc.
67 Leslie Road
Toronto, ON, M5B 2T8
T 416 425 2222
turnerfleischer.com

This drawing, as an instrument of service, is provided by and is the property of Turner Fleischer Architects Inc. The contractor must verify and accept responsibility for all dimensions and conditions on site and must notify Turner Fleischer Architects Inc. of any variations from the supplied information. This drawing is not to be scaled. The architect is not responsible for the accuracy of survey, structural, mechanical, electrical, etc. information shown on this drawing. Refer to the appropriate consultant drawings before proceeding with the work. Contractor must conform to all applicable codes and requirements of authorities having jurisdiction. The contractor working from drawings not specifically marked "For Contractor" must assume full responsibility and bear costs for any corrections or damages resulting from the work.

EXTERIOR FINISH LEGEND

1	PRECAST OR EQUIVALENT - DARK BROWN
2	PRECAST OR EQUIVALENT - DARK GREY
3	SPANDREL PANEL - DARK GREY
4	ALUMINUM MULLION - DARK GREY
5	CLEAR GLAZING
6	CLEAR GLAZING TREATED
7	BALCONY DIVIDER GLAZING
8	CLEAR BALCONY GLAZING
9	CLEAR BALCONY GLAZING TREATED
10	METAL PANEL - DARK GREY
11	METAL PANEL - BRASS
12	LOUVERS - DARK GREY

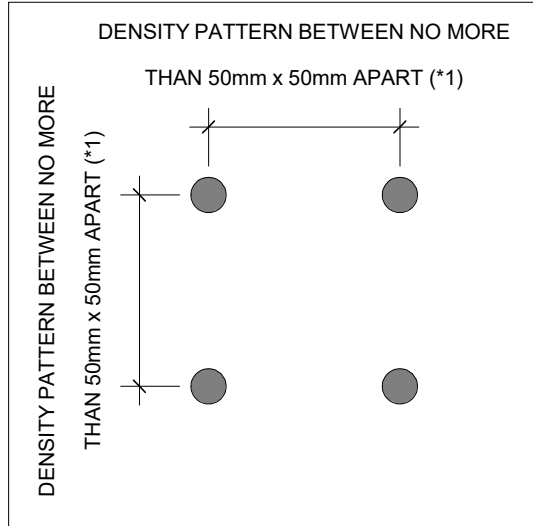


TORONTO GREEN STANDARDS BIRD FRIENDLY GLASS

GENERAL NOTES IN ACCORDANCE WITH THE BIRD-FRIENDLY DEVELOPMENT GUIDELINES FIRST 16 METERS ABOVE GRADE AND 4 METERS ABOVE GREEN FEATURE):

PROVISION OF VISUAL MARKERS
VISUAL MARKERS TO ALERT BIRDS WILL BE PROVIDED. METHODS OF ACHIEVING THIS ARE AS FOLLOWS:
- VISUAL MARKERS APPLIED TO GLASS WITH A MAXIMUM SPACING OF 50mm x 50mm
- LOW REFLECTANCE OR OPAQUE MATERIALS
- BUILDING-INTERGRATED STRUCTURES TO MUTE REFLECTIONS ON GLASS SURFACES

REDUCTION OF LIGHT POLLUTION
- REDUCTION OF LIGHT POLLUTION FROM INTERIOR LIGHTS, PARTICULARLY DURING MIGRATION PERIODS
- SELECTION OF APPROPRIATE EXTERNAL LIGHTING FIXTURES TO ELIMINATE DIRECT UPWARDS LIGHT. REDUCE SPILL LIGHT AND OPTIMIZE USEFUL LIGHT



DETAIL NOTES
- FRITTED GLASS WILL BE TREATED WITH A DENSITY PATTERN OF VISUAL MARKERS NO MORE THAN 50mm X 50mm APRT FOR THE FIRST 16M ABOVE GRADE. (TORONTO GREEN STANDARD EC4.1)

#	DATE	ISSUED FOR ZBA/SPA SUBMISSION	DESCRIPTION	AA/	BY
---	------	-------------------------------	-------------	-----	----



PROJECT
4630 Kingston Road, Scarborough, ON

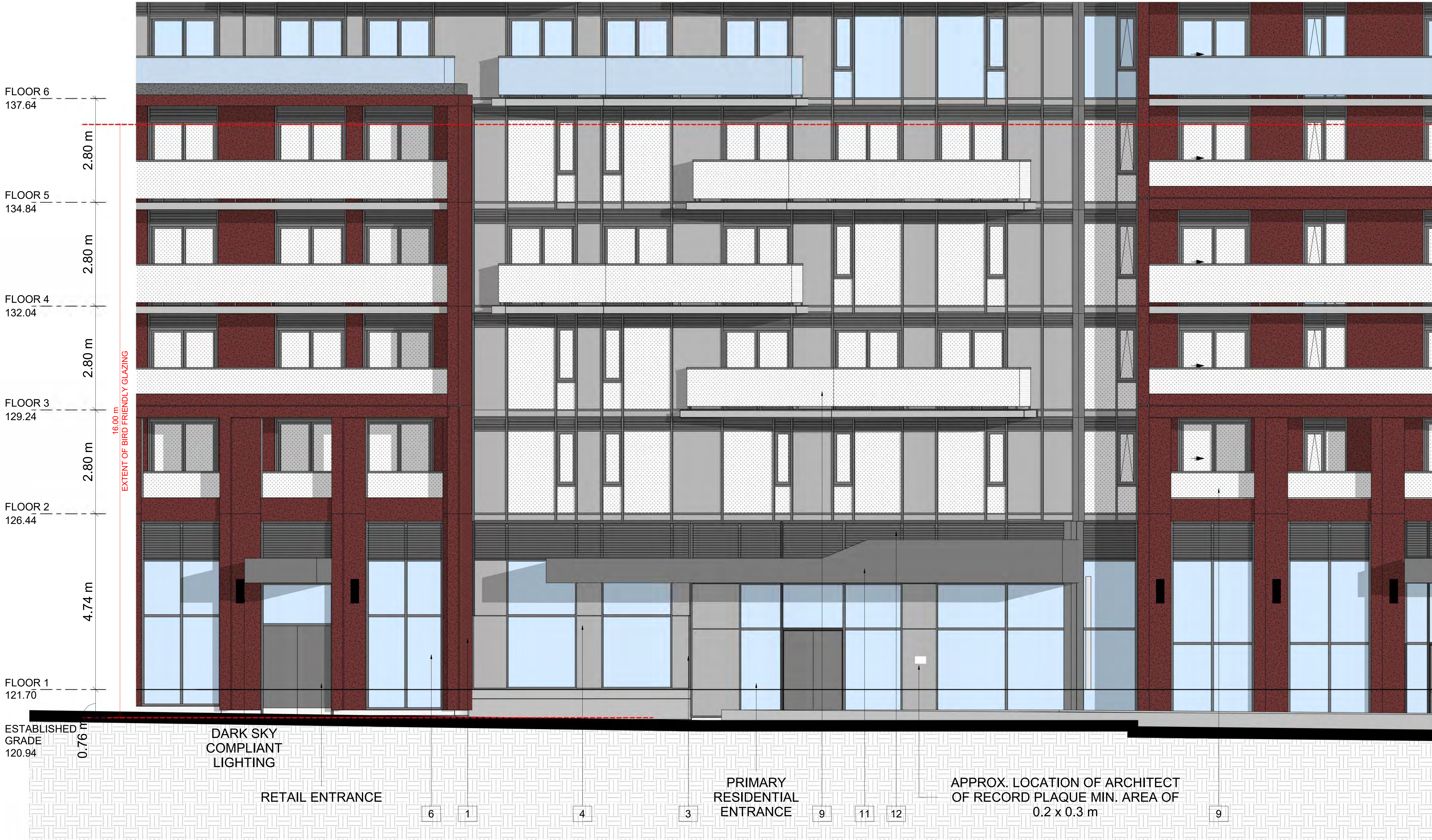
4630 Kingston Road, Scarborough, ON

DRAWING

1 TO 50 ELEVATIONS

PROJECT NO. 21-129CS	
PROJECT DATE 2024-05-24	
DRAWN BY Author	
CHECKED BY Checker	
SCALE As indicated	

DRAWING NO.
SPA312



TURNER FLEISCHER

Turner Fleischer Architects Inc.
67 Leslie Road
Toronto, ON, M5B 2T8
T 416 425 2222
turnerfleischer.com

This drawing, as an instrument of service, is provided by and is the property of Turner Fleischer Architects Inc. The contractor must verify and accept responsibility for all dimensions and conditions on site and must notify Turner Fleischer Architects Inc. of any variations from the supplied information. This drawing is not to be scaled. The architect is not responsible for the accuracy of survey, structural, mechanical, electrical, etc. information shown on this drawing. Refer to the appropriate consultant drawings before proceeding with the work. The contractor must conform to all applicable codes and requirements of authorities having jurisdiction. The contractor working from drawings not specifically marked "For Construction" must assume full responsibility and bear costs for any corrections or damages resulting from his work.

EXTERIOR FINISH LEGEND

1	PRECAST OR EQUIVALENT - DARK BROWN
2	PRECAST OR EQUIVALENT - DARK GREY
3	SPANDREL PANEL - DARK GREY
4	ALUMINUM MULLION - DARK GREY
5	CLEAR GLAZING
6	CLEAR GLAZING TREATED
7	BALCONY DIVIDER GLAZING
8	CLEAR BALCONY GLAZING
9	CLEAR BALCONY GLAZING TREATED
10	METAL PANEL - DARK GREY
11	METAL PANEL - BRASS
12	LOUVERS - DARK GREY

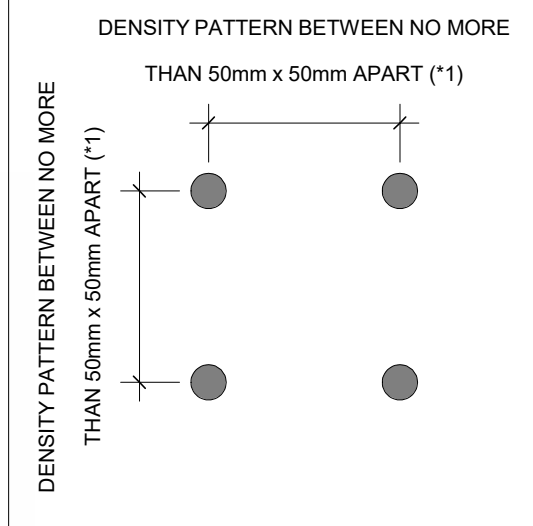


TORONTO GREEN STANDARDS BIRD FRIENDLY GLASS

GENERAL NOTES IN ACCORDANCE WITH THE BIRD-FRIENDLY DEVELOPMENT GUIDELINES (FIRST 16 METERS ABOVE GRADE AND 4 METERS ABOVE GREEN FEATURE):

PROVISION OF VISUAL MARKERS
VISUAL MARKERS TO ALERT BIRDS WILL BE PROVIDED. METHODS OF ACHIEVING THIS ARE AS FOLLOWS:
- VISUAL MARKERS APPLIED TO GLASS WITH A MAXIMUM SPACING OF 50mm x 50mm
- LOW REFLECTANCE OR OPAQUE MATERIALS
- BUILDING-INTEGRATED STRUCTURES TO MUTE REFLECTIONS ON GLASS SURFACES

REDUCTION OF LIGHT POLLUTION
- REDUCTION OF LIGHT POLLUTION FROM INTERIOR LIGHTS, PARTICULARLY DURING MIGRATION PERIODS
- SELECTION OF APPROPRIATE EXTERNAL LIGHTING FIXTURES TO ELIMINATE DIRECT UPWARDS LIGHT, REDUCE SPILL LIGHT AND OPTIMIZE USEFUL LIGHT



DETAIL NOTES
- FRITTED GLASS WILL BE TREATED WITH A DENSITY PATTERN OF VISUAL MARKERS NO MORE THAN 50mm X 50mm APRT FOR THE FIRST 16M ABOVE GRADE. (TORONTO GREEN STANDARD EC4.1)

8	2024-09-19	ISSUED FOR ZBA/SPA SUBMISSION	AAF
#	DATE	DESCRIPTION	BY



PROJECT
4630 Kingston Road, Scarborough, ON

4630 Kingston Road, Scarborough, ON

DRAWING

1 TO 50 ELEVATIONS

PROJECT NO. 21-129CS	
PROJECT DATE 2024-05-24	
DRAWN BY DSK	
CHECKED BY AYU	
SCALE As indicated	

DRAWING NO.
SPA313



1 SOUTH ELEVATION 1/50-3
SPA313 1:50

TURNER FLEISCHER

Turner Fleischer Architects Inc.
67 Leslie Road
Toronto, ON, M5B 2T8
T 416 425 2222
turnerfleischer.com

This drawing, as an instrument of service, is provided by and is the property of Turner Fleischer Architects Inc. The contractor must verify and accept responsibility for all dimensions and conditions on site and must notify Turner Fleischer Architects Inc. of any variations from the supplied information. This drawing is not to be scaled. The architect is not responsible for the accuracy of survey, structural, mechanical, electrical, etc. information shown on this drawing. Refer to the appropriate consultant drawings before proceeding with the work. The contractor must conform to all applicable codes and requirements of authorities having jurisdiction. The contractor working from drawings not specifically marked "For Contractor" must assume full responsibility and bear costs for any corrections or damages resulting from the work.

EXTERIOR FINISH LEGEND

1	PRECAST OR EQUIVALENT - DARK BROWN
2	PRECAST OR EQUIVALENT - DARK GREY
3	SPANDREL PANEL - DARK GREY
4	ALUMINUM MULLION - DARK GREY
5	CLEAR GLAZING
6	CLEAR GLAZING TREATED
7	BALCONY DIVIDER GLAZING
8	CLEAR BALCONY GLAZING
9	CLEAR BALCONY GLAZING TREATED
10	METAL PANEL - DARK GREY
11	METAL PANEL - BRASS
12	LOUVERS - DARK GREY

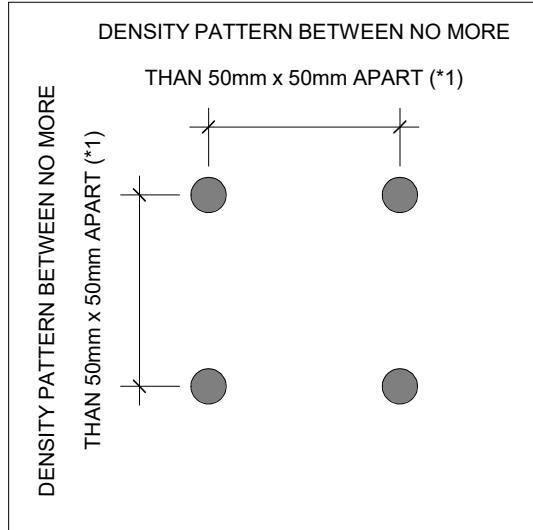


TORONTO GREEN STANDARDS BIRD FRIENDLY GLASS

GENERAL NOTES IN ACCORDANCE WITH THE BIRD-FRIENDLY DEVELOPMENT GUIDELINES (FIRST 16 METERS ABOVE GRADE AND 4 METERS ABOVE GREEN FEATURE):

PROVISION OF VISUAL MARKERS
VISUAL MARKERS TO ALERT BIRDS WILL BE PROVIDED. METHODS OF ACHIEVING THIS ARE AS FOLLOWS:
- VISUAL MARKERS APPLIED TO GLASS WITH A MAXIMUM SPACING OF 50mm x 50mm
- LOW REFLECTANCE OR OPAQUE MATERIALS
- BUILDING-INTERGRATED STRUCTURES TO MUTE REFLECTIONS ON GLASS SURFACES

REDUCTION OF LIGHT POLLUTION
- REDUCTION OF LIGHT POLLUTION FROM INTERIOR LIGHTS, PARTICULARLY DURING MIGRATION PERIODS
- SELECTION OF APPROPRIATE EXTERNAL LIGHTING FIXTURES TO ELIMINATE DIRECT UPWARDS LIGHT. REDUCE SPILL LIGHT AND OPTIMIZE USEFUL LIGHT



DETAIL NOTES
- FRITTED GLASS WILL BE TREATED WITH A DENSITY PATTERN OF VISUAL MARKERS NO MORE THAN 50mm X 50mm APRT FOR THE FIRST 16M ABOVE GRADE. (TORONTO GREEN STANDARD EC4.1)

#	DATE	ISSUED FOR ZBA/SPA SUBMISSION	DESCRIPTION	AA#	BY
---	------	-------------------------------	-------------	-----	----



PROJECT
4630 Kingston Road, Scarborough, ON

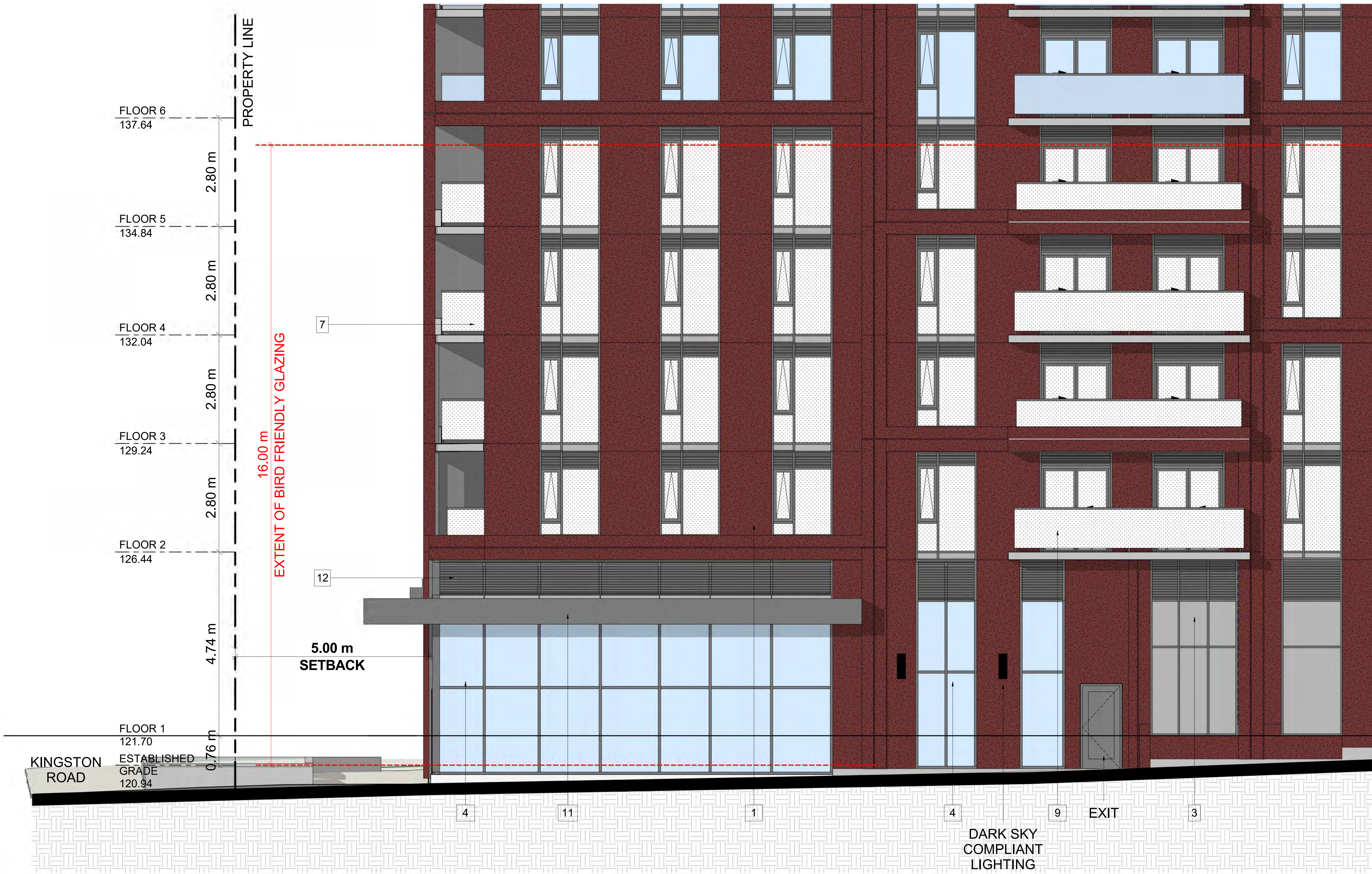
4630 Kingston Road, Scarborough, ON

DRAWING

1 TO 50 ELEVATIONS

PROJECT NO. 21-129CS	
PROJECT DATE 2024-05-24	
DRAWN BY VVA	
CHECKED BY AYU	
SCALE As indicated	

DRAWING NO.
SPA314



1 EAST ELEVATION 1/50-1
SPA314 1:50

This drawing, as an instrument of service, is provided by and is the property of Turner Fleischer Architects Inc. The contractor must verify and accept responsibility for all dimensions and conditions on site and must notify Turner Fleischer Architects Inc. of any variations from the supplied information. This drawing is not to be scaled. The architect is not responsible for the accuracy of survey, structural, mechanical, electrical, etc. information shown on this drawing. Refer to the appropriate consultant drawings before proceeding with the work. The contractor must conform to all applicable codes and requirements of all applicable building jurisdictions. The contractor must assume full responsibility and bear costs for any corrections or damages resulting from the work.

EXTERIOR FINISH LEGEND	
1	PRECAST OR EQUIVALENT - DARK BROWN
2	PRECAST OR EQUIVALENT - DARK GREY
3	SPANDREL PANEL - DARK GREY
4	ALUMINUM MULLION - DARK GREY
5	CLEAR GLAZING
6	CLEAR GLAZING TREATED
7	BALCONY DIVIDER GLAZING
8	CLEAR BALCONY GLAZING
9	CLEAR BALCONY GLAZING TREATED
10	METAL PANEL - DARK GREY
11	METAL PANEL - BRASS
12	LOUVERS - DARK GREY



TORONTO GREEN STANDARDS BIRD FRIENDLY GLASS

GENERAL NOTES IN ACCORDANCE WITH THE BIRD-FRIENDLY DEVELOPMENT GUIDELINES (FIRST 16 METERS ABOVE GRADE AND 4 METERS ABOVE GREEN FEATURE):

PROVISION OF VISUAL MARKERS
VISUAL MARKERS TO ALERT BIRDS WILL BE PROVIDED. METHODS OF ACHIEVING THIS ARE AS FOLLOWS:

- VISUAL MARKERS APPLIED TO GLASS WITH A MAXIMUM SPACING OF 50mm x 50mm
- LOW REFLECTANCE OR OPAQUE MATERIALS
- BUILDING-INTERGRATED STRUCTURES TO MUTE REFLECTIONS ON GLASS SURFACES

REDUCTION OF LIGHT POLLUTION
- REDUCTION OF LIGHT POLLUTION FROM INTERIOR LIGHTS, PARTICULARLY DURING MIGRATION PERIODS
- SELECTION OF APPROPRIATE EXTERNAL LIGHTING FIXTURES TO ELIMINATE DIRECT UPWARDS LIGHT. REDUCE SPILL LIGHT AND OPTIMIZE USEFUL LIGHT

DENSITY PATTERN BETWEEN NO MORE THAN 50mm x 50mm APART (*1)

DENSITY PATTERN BETWEEN NO MORE THAN 50mm x 50mm APART (*1)

DETAIL NOTES
- FRITTED GLASS WILL BE TREATED WITH A DENSITY PATTERN OF VISUAL MARKERS NO MORE THAN 50mm X 50mm APRT FOR THE FIRST 16M ABOVE GRADE. (TORONTO GREEN STANDARD EC.4.1)

#	DATE	ISSUED FOR ZBA/SPA SUBMISSION	DESCRIPTION	AAJ	BY
---	------	-------------------------------	-------------	-----	----



PROJECT
4630 Kingston Road, Scarborough, ON

4630 Kingston Road, Scarborough, ON

DRAWING

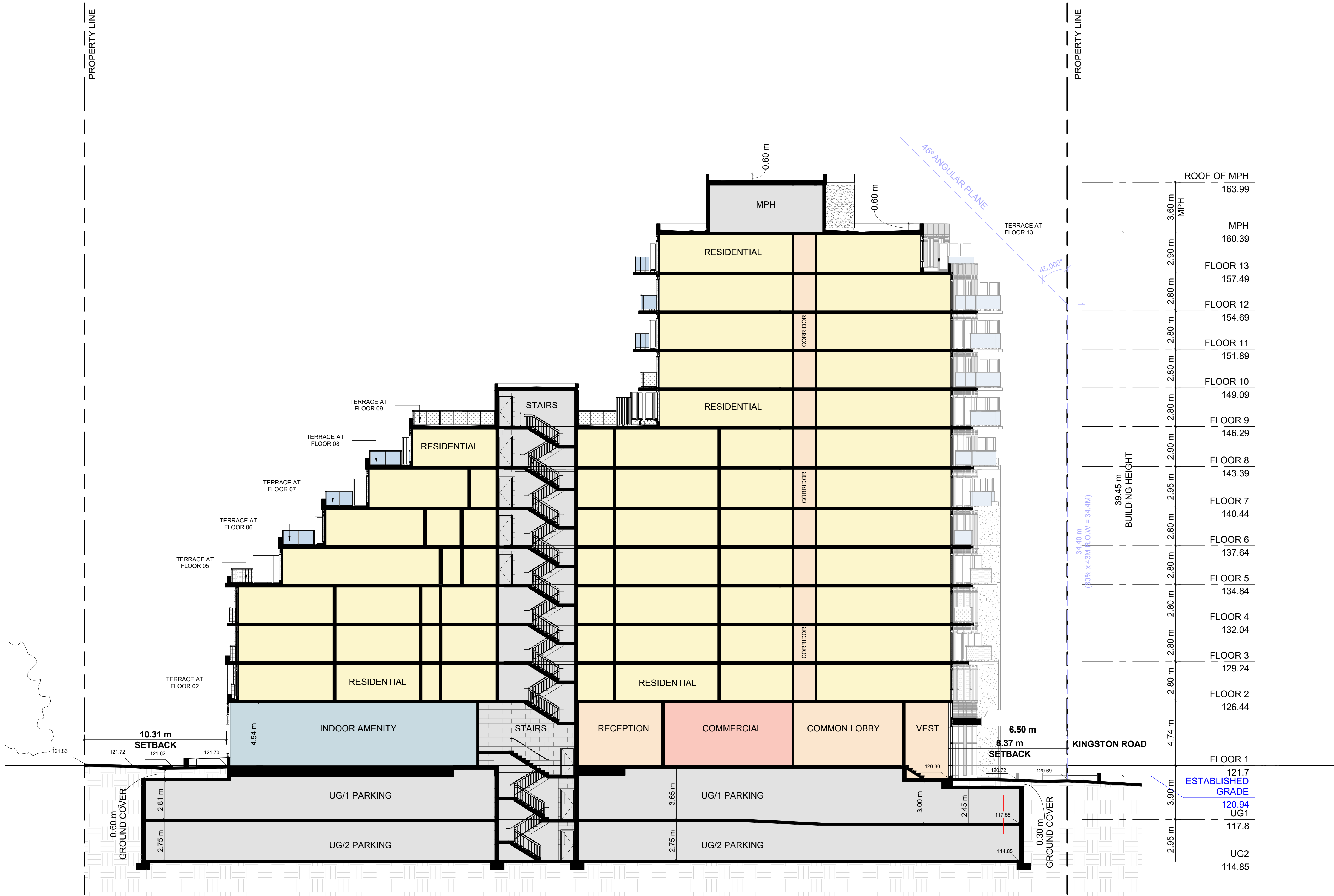
1 TO 50 ELEVATIONS

PROJECT NO. 21-129CS	
PROJECT DATE 2024-05-24	
DRAWN BY VVA	
CHECKED BY AYU	
SCALE As indicated	

DRAWING NO.
SPA315



1 EAST ELEVATION 1/50-2
SPA315 1:50



#	DATE	ISSUED FOR ZBA/SPA SUBMISSION	DESCRIPTION	AA	BY
6	2024-09-19				



PROJECT
4630 Kingston Road, Scarborough, ON

4630 Kingston Road, Scarborough, ON

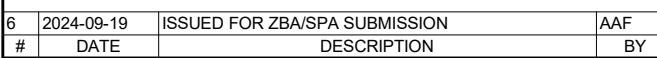
DRAWING

SECTION A-A

PROJECT NO. 21-129CS	
PROJECT DATE 2024-05-24	
DRAWN BY TKA	
CHECKED BY AYU	
SCALE 1 : 150	

DRAWING NO.
SPA401

This drawing, as an instrument of service, is provided by and is the property of Turner Fleischer Architects Inc. The contractor must verify and accept responsibility for all dimensions and conditions on site and must notify Turner Fleischer Architects Inc. of any variations from the supplied information. This drawing is not to be scaled. The architect is not responsible for the accuracy of survey, structural, mechanical, electrical, etc., information shown on this drawing. Refer to the contract documents for the complete terms and conditions of the contract. The contractor must conform to applicable codes and requirements of authorities having jurisdiction. The contractor working from drawings not specifically marked "For Construction" must assume full responsibility and bear costs for any corrections or damages resulting from his work.



PROJECT
4630 Kingston Road, Scarborough, ON

4630 Kingston Road, Scarborough, ON

DRAWING

SECTION B-B

PROJECT NO.

21.129CS

PROJECT DATA

2024-05-2

DRAWN BY

TKA

CHECKED BY _____

AYU

SCALE

1 : 200

DRAWING NO.

SPA402

This drawing, as an instrument of service, is provided by and is the property of Turner Fleischer Architects Inc. The contractor must verify and accept responsibility for all dimensions and conditions on site and must notify Turner Fleischer Architects Inc. of any variations from the supplied information. This drawing is not to be scaled. The architect is not responsible for the accuracy of survey, structural, mechanical, electrical, etc., information shown on this drawing. Refer to the appropriate consultant's drawings before proceeding with the work. Contractor must conform to all applicable codes and requirements of authorities having jurisdiction. The contractor working from drawings not specifically marked "For Construction" must assume full responsibility and bear costs for any corrections or damages resulting from his work.



SOUTH WEST CORNER - VIEW FROM KINGSTON ROAD

6	2024-09-19	ISSUED FOR ZBA/SPA SUBMISSION	AAF
#	DATE	DESCRIPTION	BY



PROJECT
4630 Kingston Road, Scarborough, ON

4630 Kingston Road, Scarborough, ON

DRAWING

3D PERSPECTIVES

PROJECT NO. 21-129CS	
PROJECT DATE 2024-05-24	
DRAWN BY DSK	
CHECKED BY AYU	
SCALE	

DRAWING NO.
SPA802



SOUTH FACADE - VIEW FROM KINGSTON ROAD

6	2024-09-19	ISSUED FOR ZBA/SPA SUBMISSION	AAF
#	DATE	DESCRIPTION	BY



PROJECT
4630 Kingston Road, Scarborough, ON

4630 Kingston Road, Scarborough, ON

DRAWING

3D PERSPECTIVES

PROJECT NO. 21-129CS	
PROJECT DATE 2024-05-24	
DRAWN BY DSK	
CHECKED BY AYU	
SCALE	

DRAWING NO.
SPA803

This drawing, as an instrument of service, is provided by and is the property of Turner Fleischer Architects Inc. The contractor must verify and accept responsibility for all dimensions and conditions on site and must notify Turner Fleischer Architects Inc. of any variations from the supplied information. This drawing is not to be scaled. The architect is not responsible for the accuracy of survey, structural, mechanical, electrical, etc., information shown on this drawing. Refer to the appropriate consultant's drawings before proceeding with the work. Contractor must conform to all applicable codes and requirements of authorities having jurisdiction. The contractor working from drawings not specifically marked "For Construction" must assume full responsibility and bear costs for any corrections or damages resulting from his work.



SOUTH EAST CORNER - VIEW FROM KINGSTON ROAD

6	2024-09-19	ISSUED FOR ZBA/SPA SUBMISSION	AAF
#	DATE	DESCRIPTION	BY



PROJECT
4630 Kingston Road, Scarborough, ON

4630 Kingston Road, Scarborough, ON

DRAWING
3D PERSPECTIVES

PROJECT NO. 21-129CS	
PROJECT DATE 2024-05-24	
DRAWN BY DSK	
CHECKED BY AYU	
SCALE	

DRAWING NO.
SPA804