

Update Downsview >>

Downsview Community Development Plan

Economic and Community Development Committee

April 30, 2024

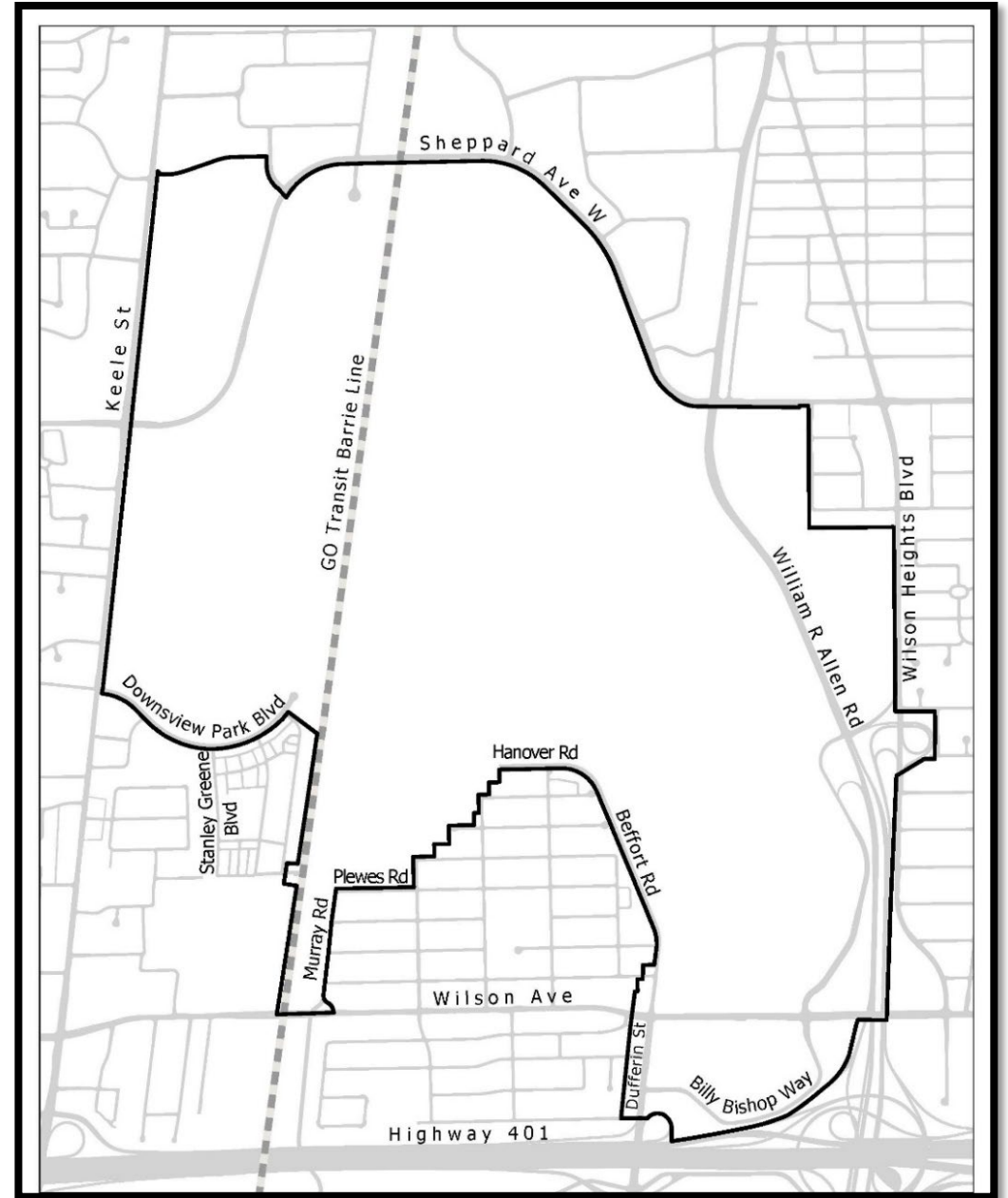
City Building Opportunity

- 3 existing subway stations + GO station: excellent access
- Opportunity to stitch the airport lands back into the surrounding communities with new streets, active transportation connections – including the Green Spine – and rail crossings
- Largest Project in Canada and one of the largest in Toronto's history
- Master planning process allows for the creation of true complete communities



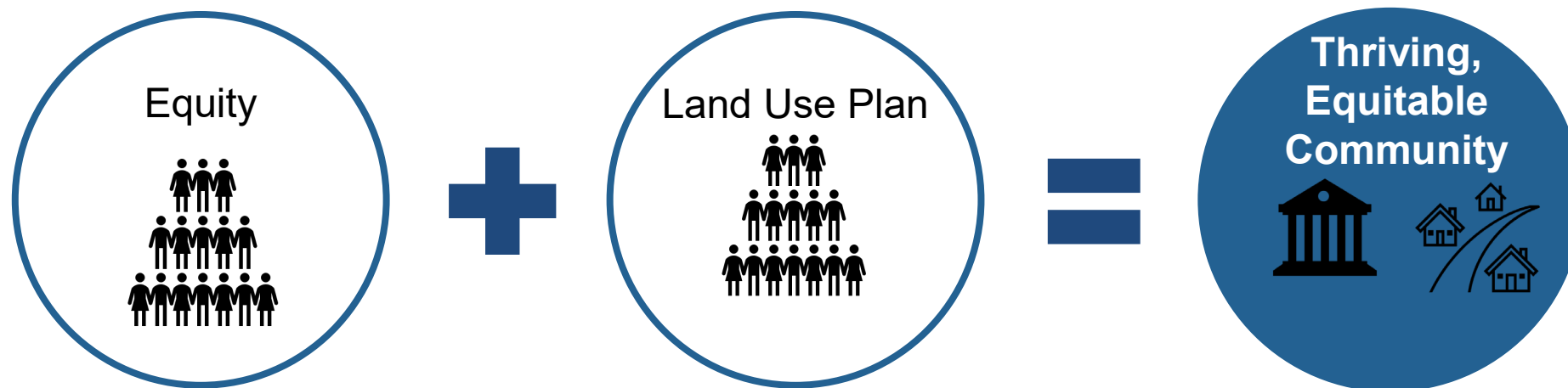
Building a New Community

- ❖ Draft Secondary Plan Area - 540 hectares (1334 acres)
- ❖ Estimated Population: 115,000
- ❖ Estimated Units: 63,000
- ❖ Estimated Jobs: 52,000



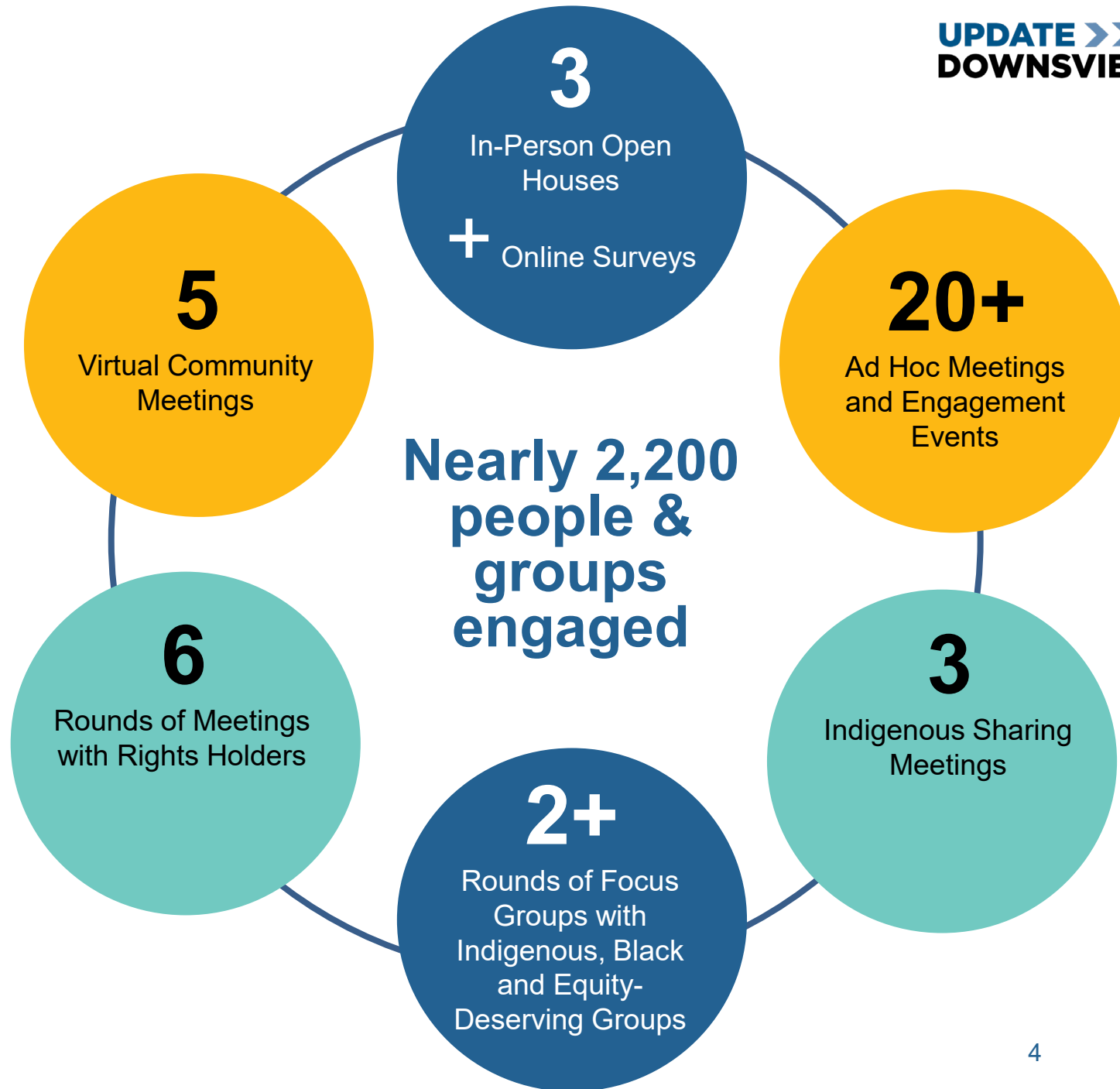
The Community Development Plan

- A plan that **works in close partnership with the Secondary Plan to leverage the high growth and enhance typical land use planning** by engaging a variety of groups, identifying priorities and subsequent actions that **can advance equity and build stronger communities**.
- It takes advantage of the intensification by requiring different levels of government, the private sector and the not-for-profit to work together, and secure resources that address core needs of a community.



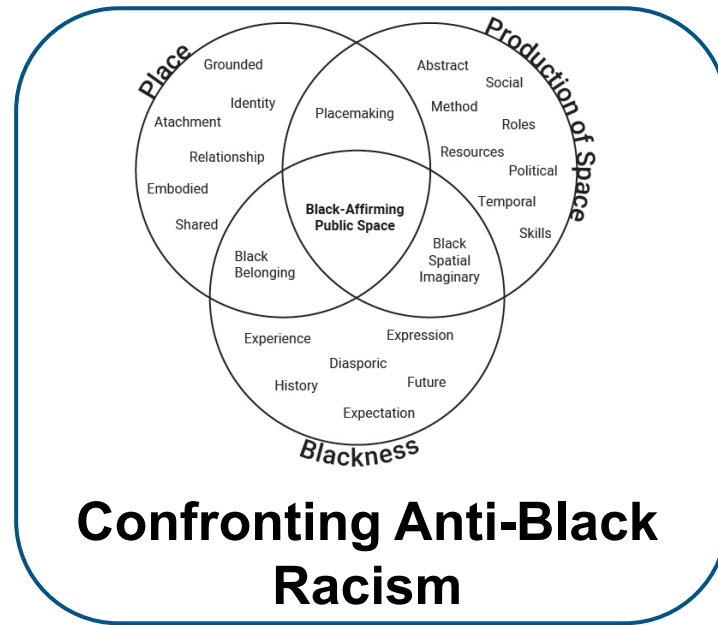
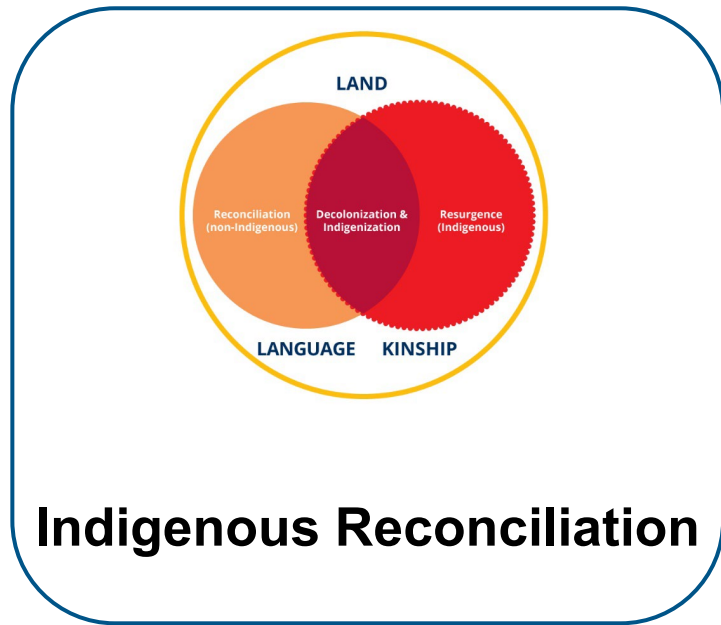
Community Engagement

- ❖ Broad-based engagement with a focus on Indigenous and Black engagement
- ❖ Input has informed the overall direction of the Update Downsview deliverables



Downsview CDP Principles

The Downsview Community Development Plan is **guided by 3 core principles:**



Community Development Plan Priorities



Access to Housing



Access to Healthy and Affordable Food



Arts, Heritage and Education



Access to Recreation and Community Spaces



Access to Employment Opportunities



Establishing an Inclusive Economy



Community Safety, Health and Wellbeing

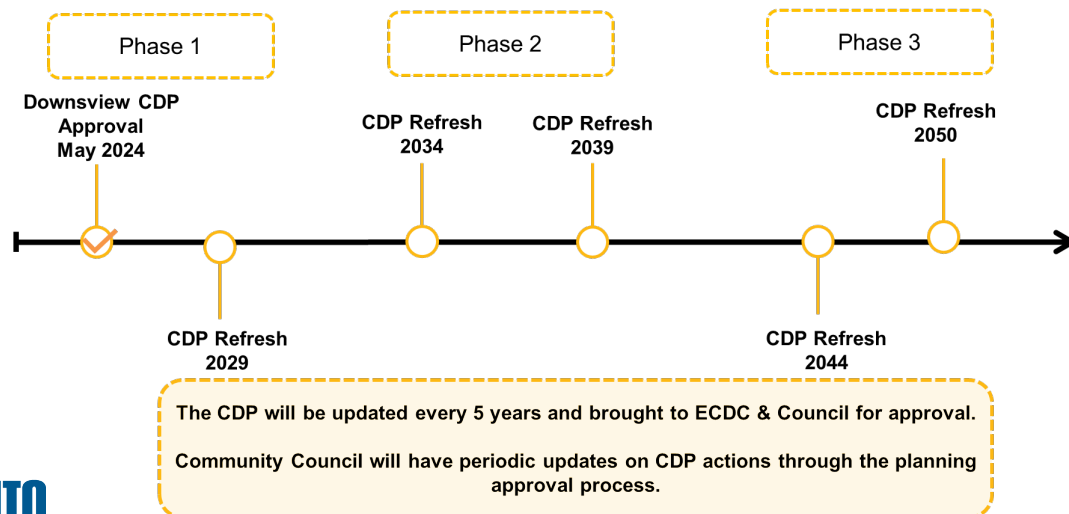


Environment and Climate

Implementation Road Map

- Action Plan:
 - Short term (**start** within 5 years); Medium term (at 10 years onward); Long term (at 15 years onward)
- Develop a Community Partnership Structure
- Develop a Results-Based Monitoring and Evaluation System
- Establish a Community Impact Table

CDP Refresh Timeline



Thank You

**Social Development, Finance and Administration
Economic Development and Culture
City Planning**

