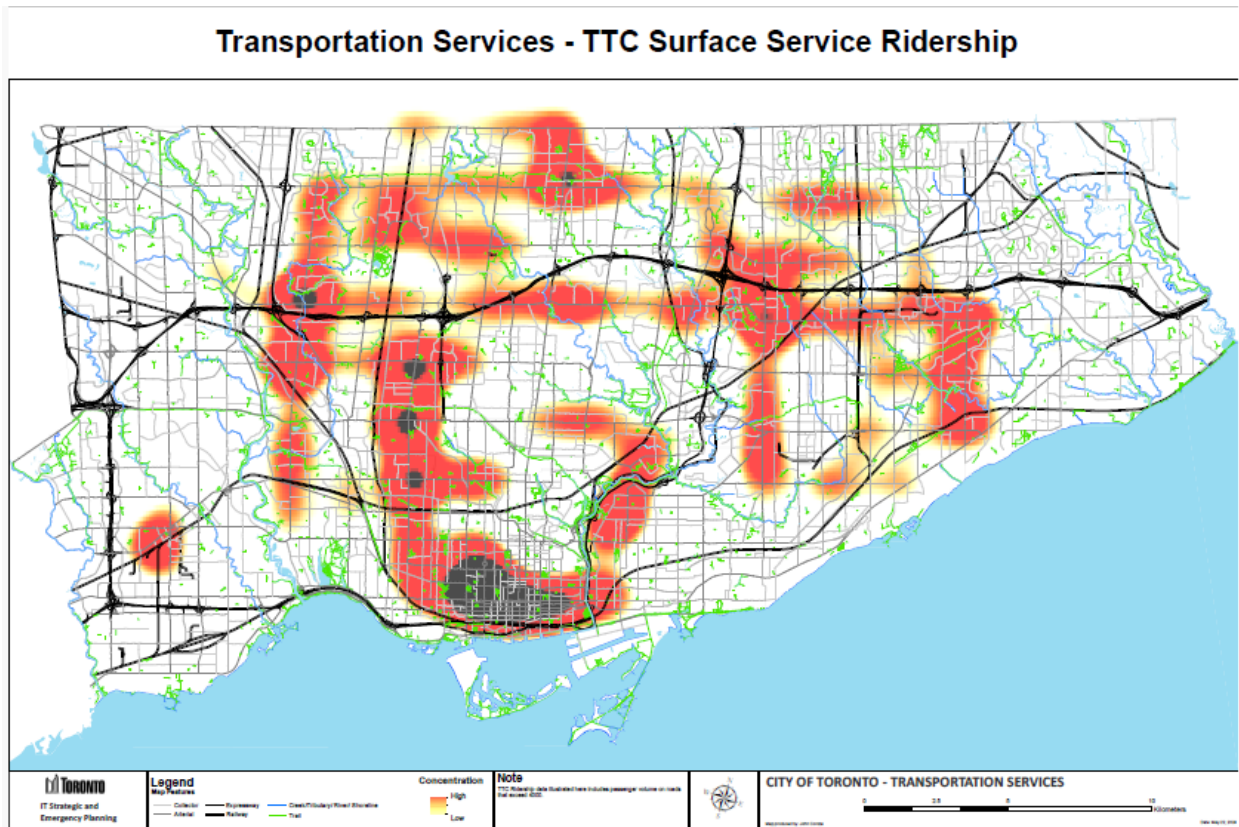


Attachment 5: Heat Maps for the Prioritization Framework of the Major Snow Event Response Plan

The five heat maps below show the key factors considered for the route prioritization analysis. These key factors include transit ridership, locations of emergency services, cycling infrastructure, sidewalks and bridges that do not have enough space to store snow.



Legend

- Collector
- Expressway
- Direct/Indirect Road Structure
- Arterial
- Railway
- Trail

Concentration

- High
- Low

Note
Emergency services data (disturbed here include paramedic station, fire station, police station and hospital).

CITY OF TORONTO - TRANSPORTATION SERVICES

0 2.5 5 10 Kilometers

DATE: 2014-01-01

Legend

Map Features

- Collector
- Arterial
- Expressway
- Railway
- Green/Highway/Road Structure
- Trail

Concentration

High
Low

Note

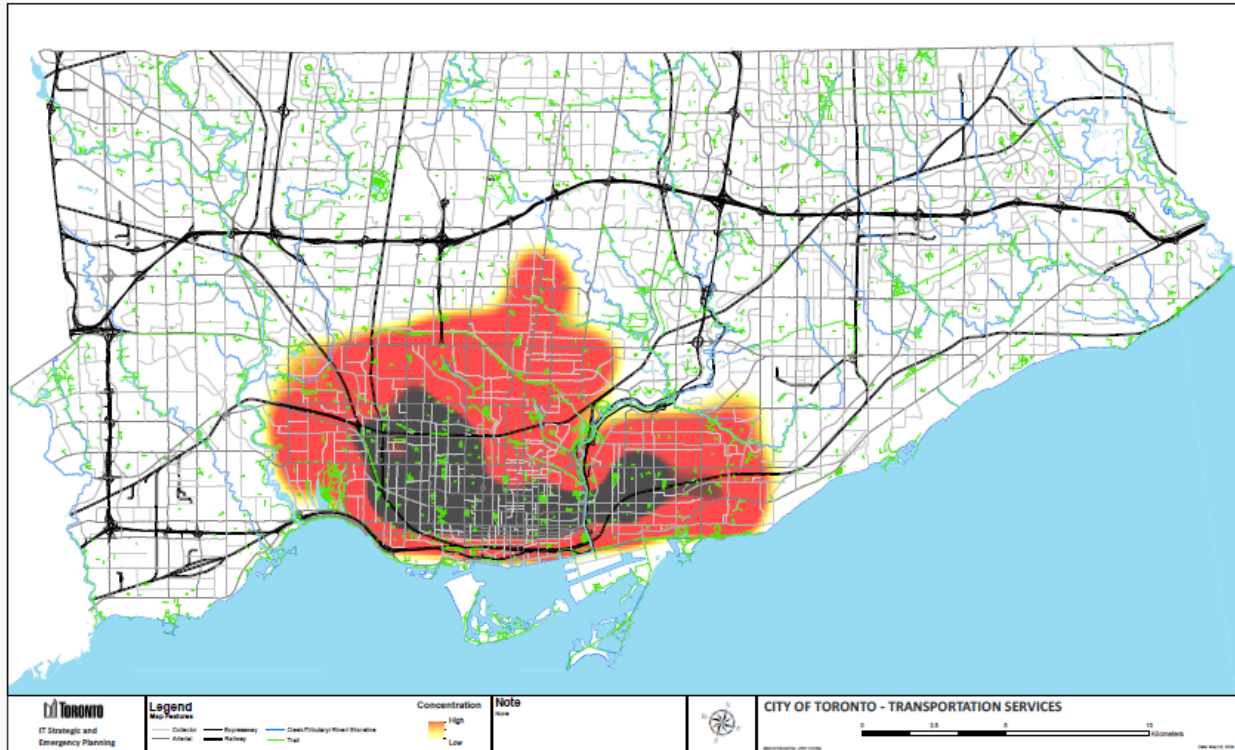
Color concentration data displayed here includes cycle tracks that are currently under construction, as well as concrete sidewalks, concrete sidewalks, and concrete sidewalks.

CITY OF TORONTO - TRANSPORTATION SERVICES

0 2.5 5 10 Kilometers

Scale: 1:50,000

Transportation Services - Monolithic Sidewalks



Transportation Services - Bridges

