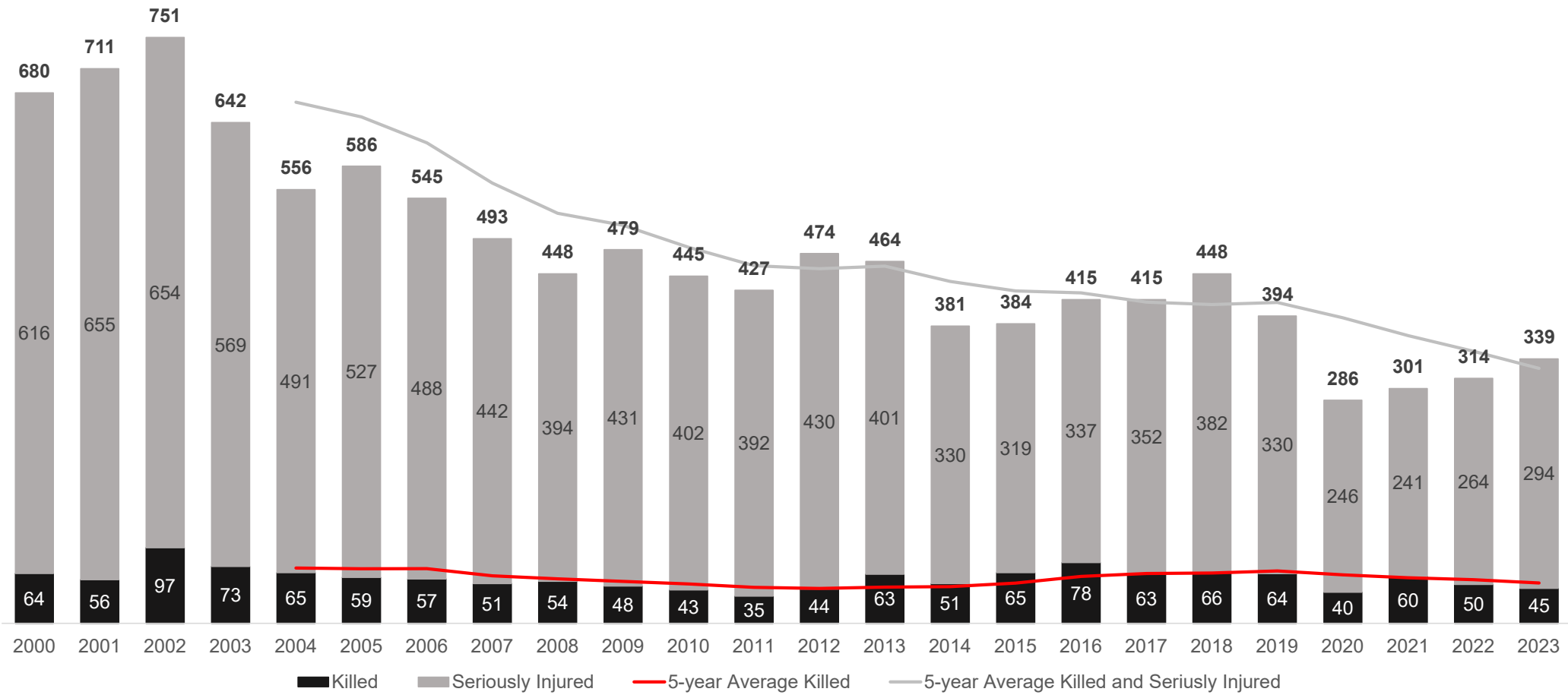


ATTACHMENT 3
TRENDS IN SERIOUS INJURIES AND FATALITIES

2024 UPDATE

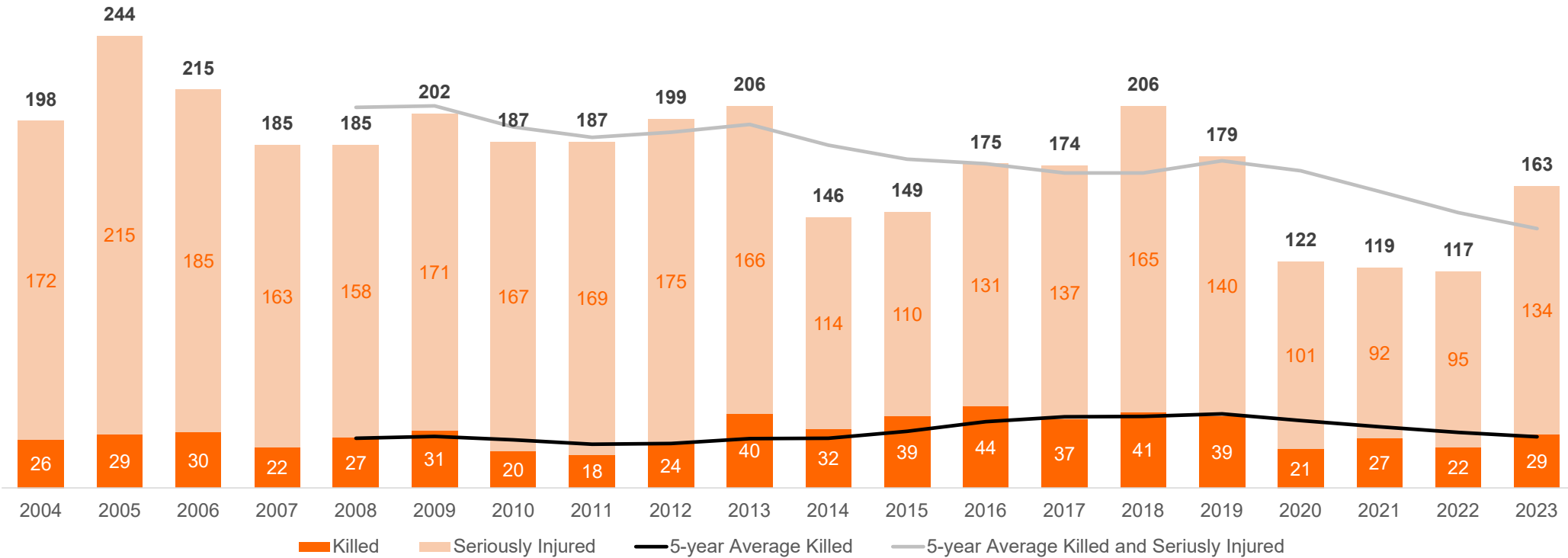
KILLED OR SERIOUSLY INJURED (2000-2024)





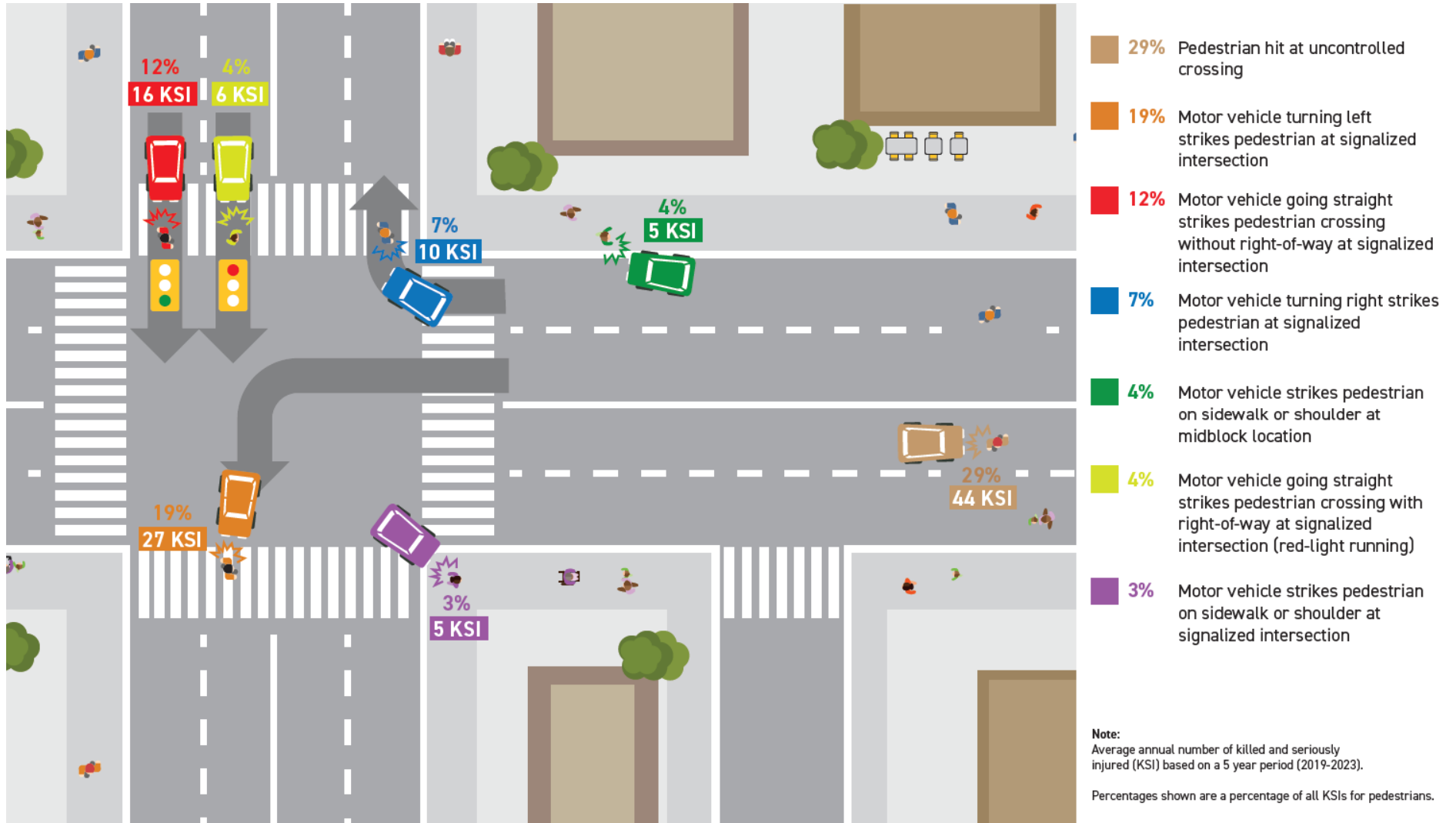
PEDESTRIAN KILLED OR SERIOUSLY INJURED (KSI)

- Pedestrian KSIs make up 43% of all KSIs
- 50% of pedestrian KSIs occur at signalized intersections





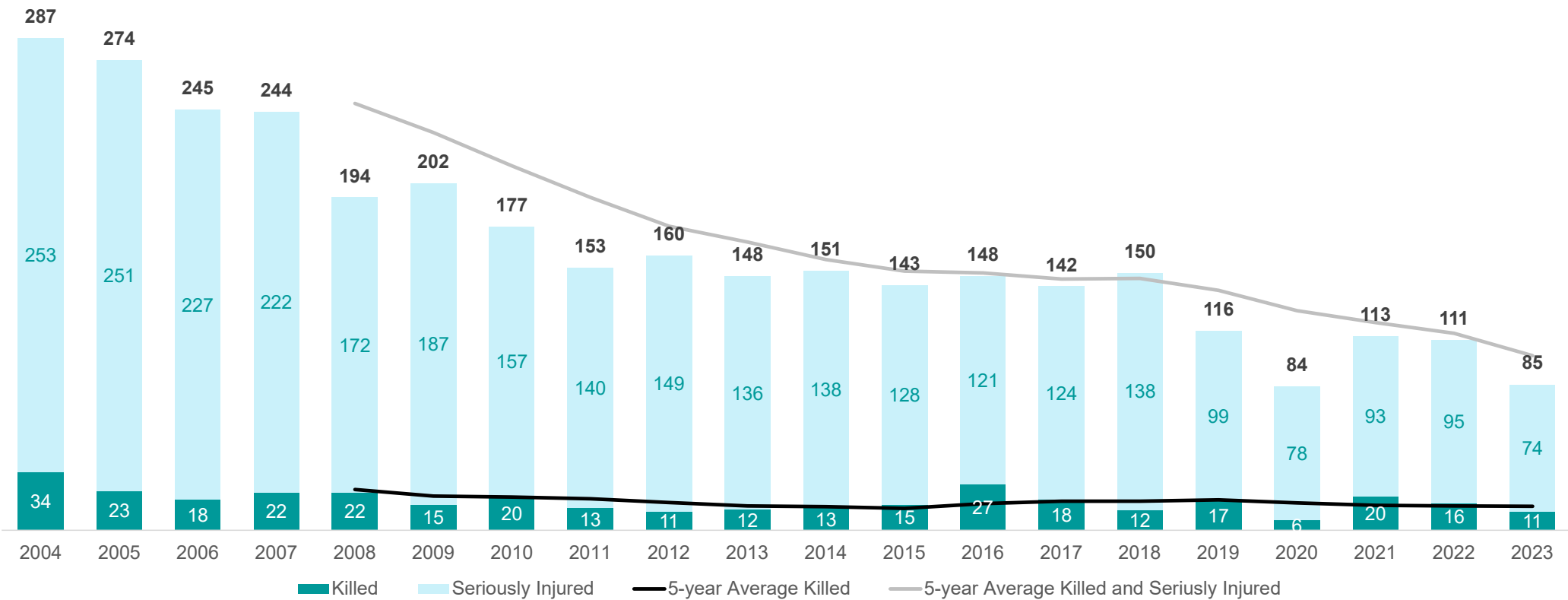
WHERE AND HOW PEDESTRIANS ARE BEING HIT





AUTOMOBILE OCCUPANTS KILLED OR SERIOUSLY INJURED (KSI)

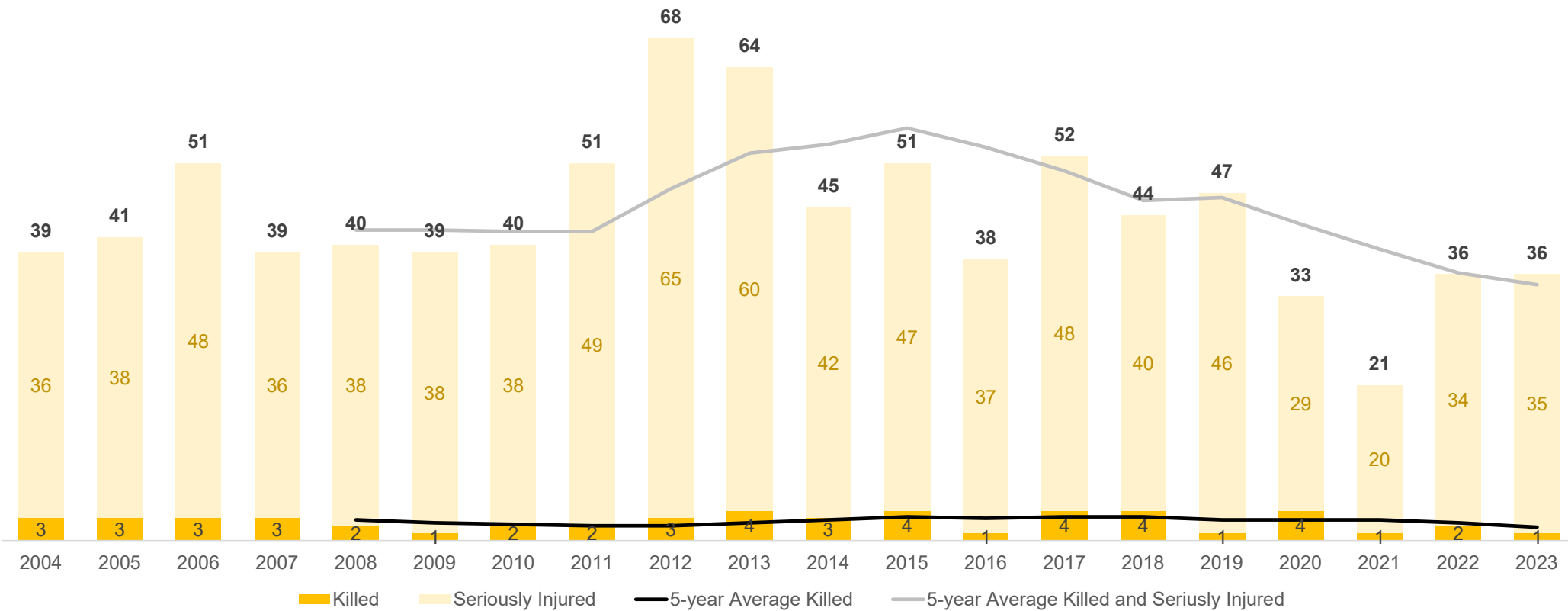
- Automobile occupant KSIs make up 32% of all KSI collisions
- 39% of automobile occupant KSIs occur at signalized intersections





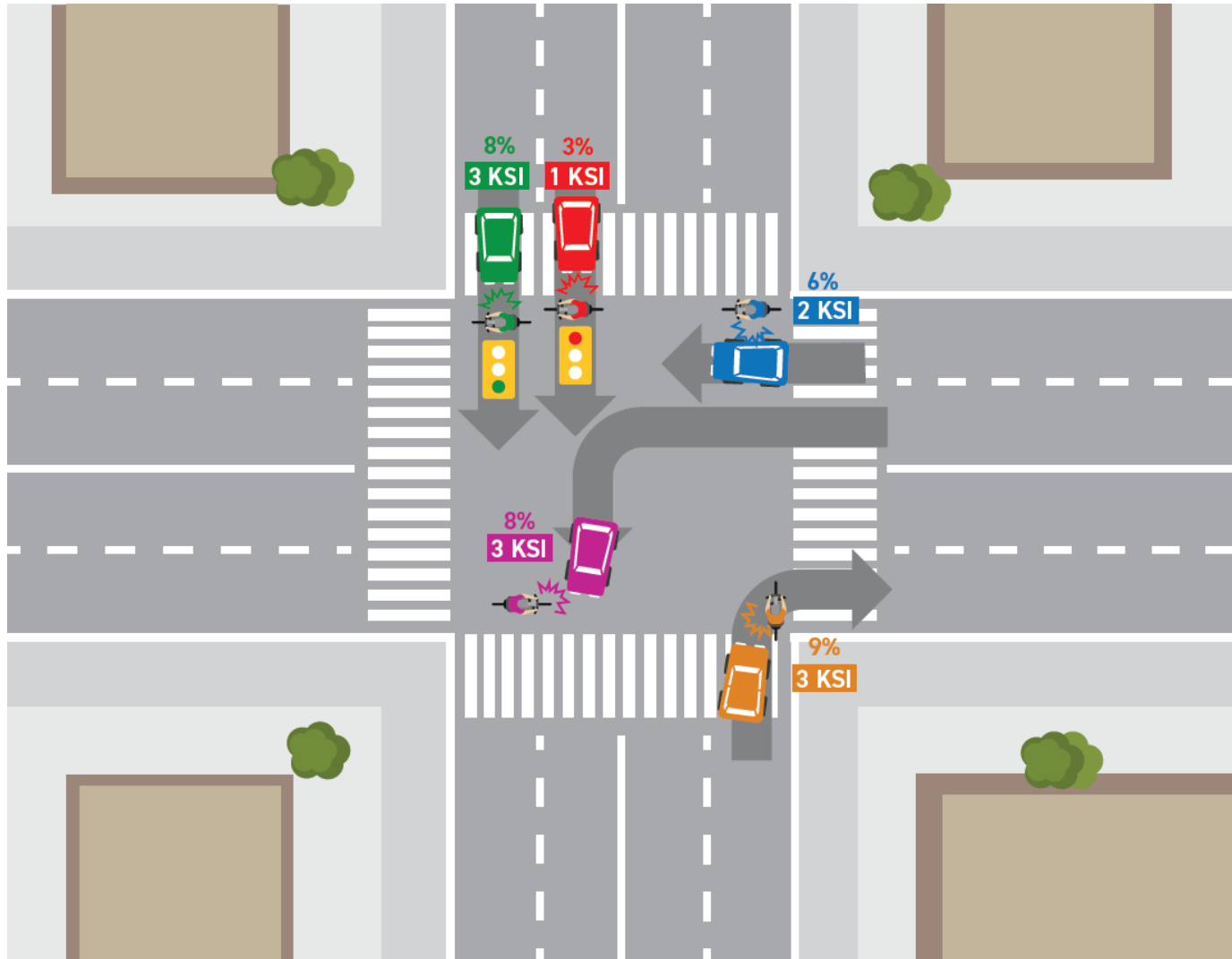
**PEOPLE ON BICYCLES
KILLED OR SERIOUSLY INJURED (KSI)**

- KSIs involving people on bicycles make up 11% of all KSIs
- 40% of bicycle KSIs occur at signalized intersections





WHERE AND HOW PEOPLE CYCLING ARE BEING HIT AT SIGNALIZED INTERSECTIONS



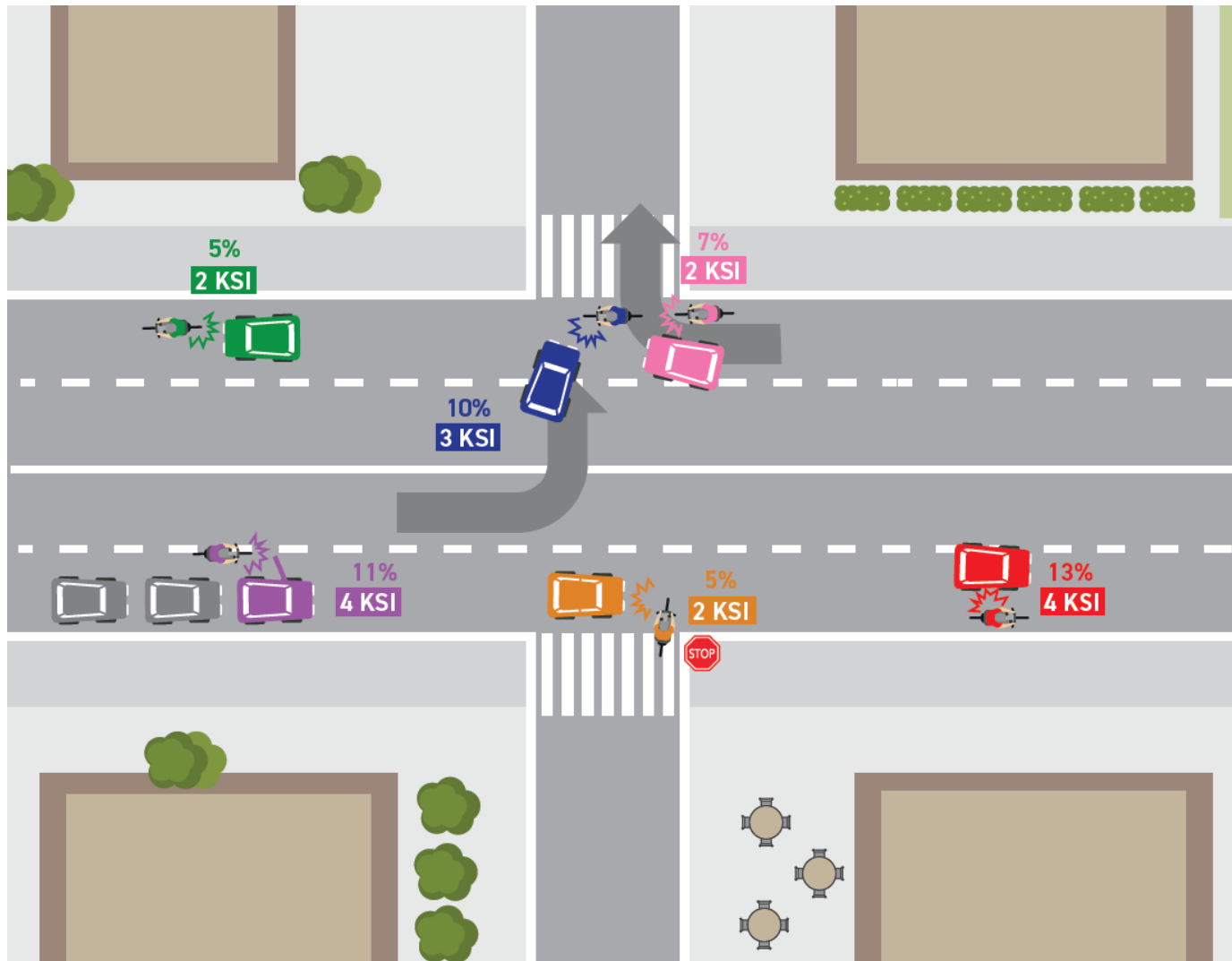
- 9%** Motor vehicle turning right strikes bicycle
- 8%** Motor vehicle turning left across path of bicycle
- 8%** Bicycle without right-of-way rides across path of motor vehicle
- 6%** Motor vehicle and bicycle sideswipe
- 3%** Motor vehicle going straight strikes bicycle with right-of-way (red-light running)

Note:
Average annual number of killed and seriously injured (KSI) based on a 5 year period (2019-2023).

Percentages shown are a percentage of all KSIs for people on bicycles.



WHERE AND HOW PEOPLE CYCLING ARE BEING HIT AT NON-SIGNALIZED INTERSECTIONS AND MID-BLOCK



- 13%** Motor vehicle and bicycle sideswipe at mid-block location
- 11%** Bicycle struck by opened motor vehicle door (dooring) (2023 KSI only)
- 10%** Motor vehicle turning left across path of bicycle
- 7%** Motor vehicle turning right strikes bicycle
- 5%** Motor vehicle and bicycle rear-end at mid-block location
- 5%** Bicycle without right-of-way rides across path of motor vehicle at stop sign

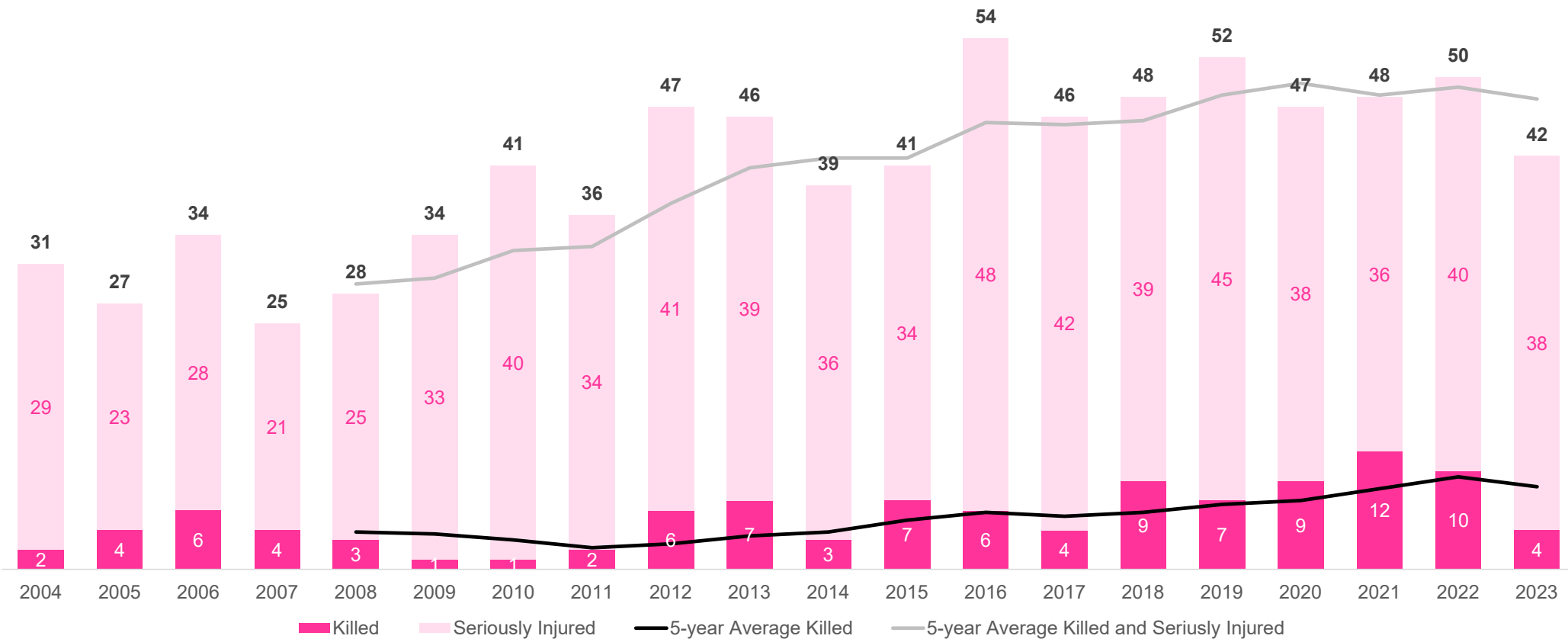
Note:
Average annual number of killed and seriously injured (KSI) based on a 5 year period (2019-2023).

Percentages shown are a percentage of all KSIs for people on bicycles.



PEOPLE ON MOTORCYCLES KILLED OR SERIOUSLY INJURED (KSI)

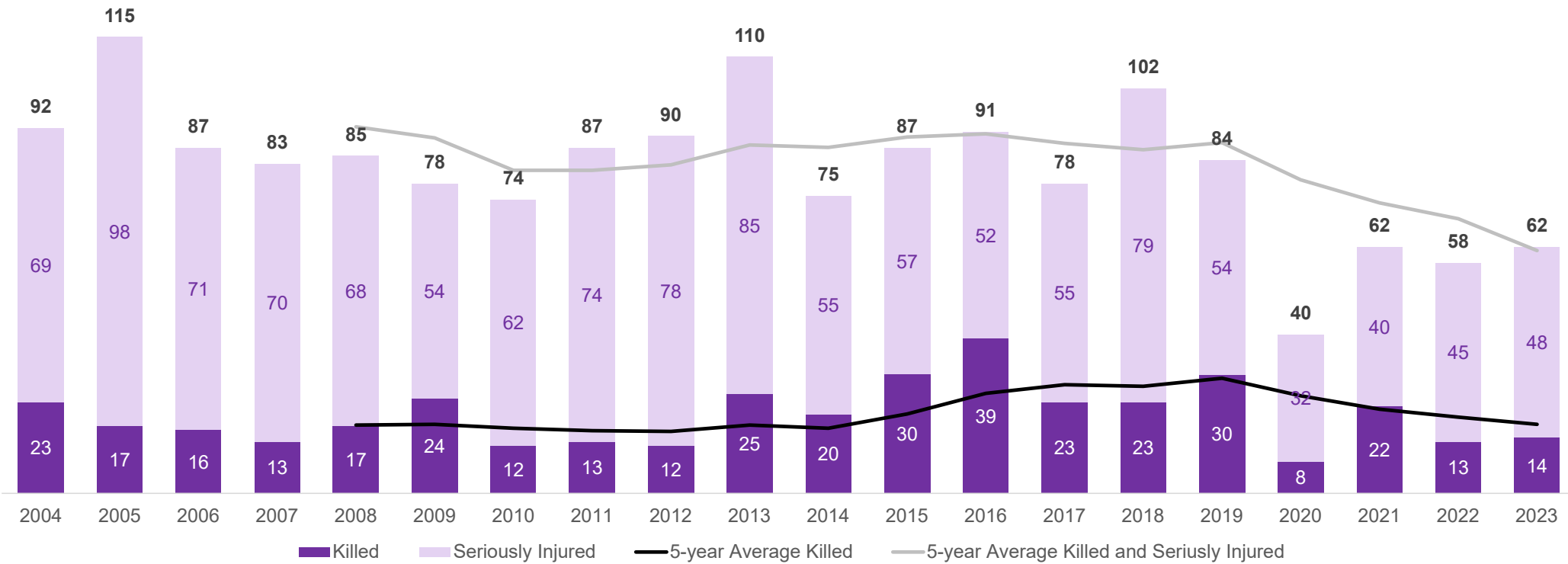
- KSIs involving people on motorcycles make up 15% of all KSIs
- 35% of motorcycle KSIs occur at signalized intersections





**OLDER ADULTS (AGE 65+)
KILLED OR SERIOUSLY INJURED (KSI)**

- KSIs involving older adults make up 19% of all KSI





SCHOOL AGED CHILDREN (AGE 4-19) KILLED OR SERIOUSLY INJURED (KSI)

- KSI involving school aged children make up 9% of all KSIs

