

Parking Amendments - Seeley Drive

Date: October 10, 2024

To: North York Community Council

From: Director, Traffic Management, Transportation Services

Wards: Ward 6 - York Centre

SUMMARY

This staff report is about a matter that Community Council has delegated authority from City Council to make a final decision.

Transportation Services is recommending that the existing parking regulations on Seeley Drive be amended to limit parking to the east side of the street only. The current regulations alternate sides during the winter months and are causing confusion for residents as well as hindering road/winter maintenance vehicles. The proposed changes will rectify these issues which will enhance two-way traffic and safety of all road users.

During the course of the investigation, it was noted that there is a discrepancy between posted signs and the existing parking regulations and the recommendations in this report will correct any inconsistency.

RECOMMENDATIONS

The Director, Traffic Management, Transportation Services recommends that:

1. North York Community Council authorize the amendments to parking regulations, as set out in Attachment 2 to the report "Parking Regulation Amendments – Seeley Drive" dated October 10, 2024, from the Director, Traffic Management, Transportation Services.

FINANCIAL IMPACT

The signage costs associated with the proposed amendments are approximately \$2000.00. Funding is available within the Transportation Services 2024 Operating Budget.

DECISION HISTORY

North York Community Council, at its meeting on June 22, 2010, adopted Item NY35.35 entitled " Stopping Prohibitions - Seeley Drive" which approved prohibiting stopping at any time, for areas adjacent to each walkway entrance to the apartment buildings where a drop curb is present on Seeley Drive.

<https://secure.toronto.ca/council/agenda-item.do?item=2010.NY35.35>

City Council, at its meeting on October 3, 4 and 5th, 2000, adopted the report entitled "Parking Prohibitions - Seeley Drive" which approved parking amendments on Seeley Drive and allow alternate side 12-hour parking from Dec 1 to March 31.

[200010-024.nyc.doc \(toronto.ca\)](200010-024.nyc.doc)

COMMENTS

The Toronto Police Services - Parking Enforcement Unit, as well as the City's Operations and Maintenance Unit and the area Councillor requested Transportation Services, Traffic Operations to review the parking regulations on Seeley Drive. Currently, designated overnight parking between the hours of 8:00 p.m. and 8:00 a.m. is both permitted and restricted on alternate sides of Seeley Drive, during the first two and last two weeks of each month from December 1 to March 31. On the side of the road where extended overnight parking is permitted, daytime parking is permitted for maximum periods of three hours between 8:00 a.m. and 8:00 p.m. From April 1st to November 30th, 12-hour overnight parking is limited to the west side of the street and the east side prohibits parking at all times. The current parking regulations are impacting winter maintenance of the street as well as confusing residents. Changes to the exiting regulation have been requested to mitigate the issues noted above.

Existing Conditions

Seeley Drive is characterized by the following conditions:

- It is a two-lane, north/south, local roadway
- It operates two-way traffic on a pavement width of approximately 8.5 metres
- The speed limit is 30 km/h
- Heavy trucks are prohibited at all times
- There is no TTC service provided
- There are sidewalks located on the east side of the street

The parking regulations on Seeley Drive are as follows:

West side

- Maximum twelve-hour parking, 8:00 p.m. to 8:00 a.m., April 1 to November 30, from Sheppard Avenue West to south end of Seeley Drive and three-hour maximum parking limit is in effect at all other times.
- No stopping anytime a point 178 metres south of Sheppard Avenue West and a point 10 metres south thereof (pathway)

- No stopping anytime a point 252 metres south of Sheppard Avenue West Anytime and a point 10 metres south thereof (pathway)
- No parking anytime, a point 280 metres south of Sheppard Avenue West Anytime and a point 10 metres south thereof (pathway)
- No stopping anytime a point 339 metres south of Sheppard Avenue West and a point 10 metres south thereof (pathway)
- Alternate side 12-hour parking, 8:00 a.m. to 8:00 p.m., from the 1st to the 15th of each month, Dec 1 to Mar 31 (signed but not by-lawed)
- No parking anytime, from the 16th to the end of the month, Dec 1 to Mar 31 (signed but not by-lawed)

East side

- No parking anytime, from Sheppard Avenue West and a point 200 metres south
- No parking anytime, Apr. 1 to Nov. 30 from A point 200 metres south of Sheppard Avenue West and A point 264 metres south of Sheppard Avenue
- No parking anytime, Apr. 1 to Nov. 30 from a point 274 metres south of Sheppard Avenue West and a point 354 metres south of Sheppard Avenue
- No parking anytime, Apr. 1 to Nov. 30 from a point 364 metres south of Sheppard Avenue West and the south end of Seeley Drive
- No stopping anytime, a point 264 metres south of Sheppard Avenue West and a point 10 metres south thereof
- No stopping anytime, a point 354 metres south of Sheppard Avenue West and a point 10 metres south thereof
- Alternate side 12-hour parking, 8:00 a.m. to 8:00 p.m., from the 16th to the end of each month, Dec 1 to Mar 31 (signed but not by-lawed)
- No parking anytime, 1st to the 15th of each month, Dec 1 to Mar 31 (signed but not by-law)

Please note that Seeley Drive is exempt from Schedule IV: Former City of North York Winter Maintenance by-law (No Parking 2am to 6am, Dec 1 to Mar 31).

Proposed Changes

In order to maintain consistency, limit confusion and enhance maintenance of the street, parking will only be allowed on the east side of Seeley Drive, specifically 12-hour parking from 8:00 p.m. to 8:00 a.m., and the City-wide 3-hour maximum parking at all other times. Parking will be prohibited at all times on the entire west side of Seeley Drive. The existing “No Stopping Anytime” restrictions in front of the walkways on the east side will be maintained for accessibility purposes. The west side of Seeley Drive does not have sidewalks which causes difficulty for passengers to exit the vehicles specifically in the winter months.

The proposed changes will enhance two-way traffic and ensure road/winter maintenance vehicles are not impeded due to parked cars and will create consistency and eliminate confusion for the residents of Seeley Drive.

A map of the area and proposed parking amendment is included in Attachment 1.

The Ward Councillor has been advised of the recommendations of this staff report.

CONTACT

Shawn Dillon, Manager Traffic Operations (Area 2), Transportation Services, 416-394-8409, Shawn.Dillon@toronto.ca

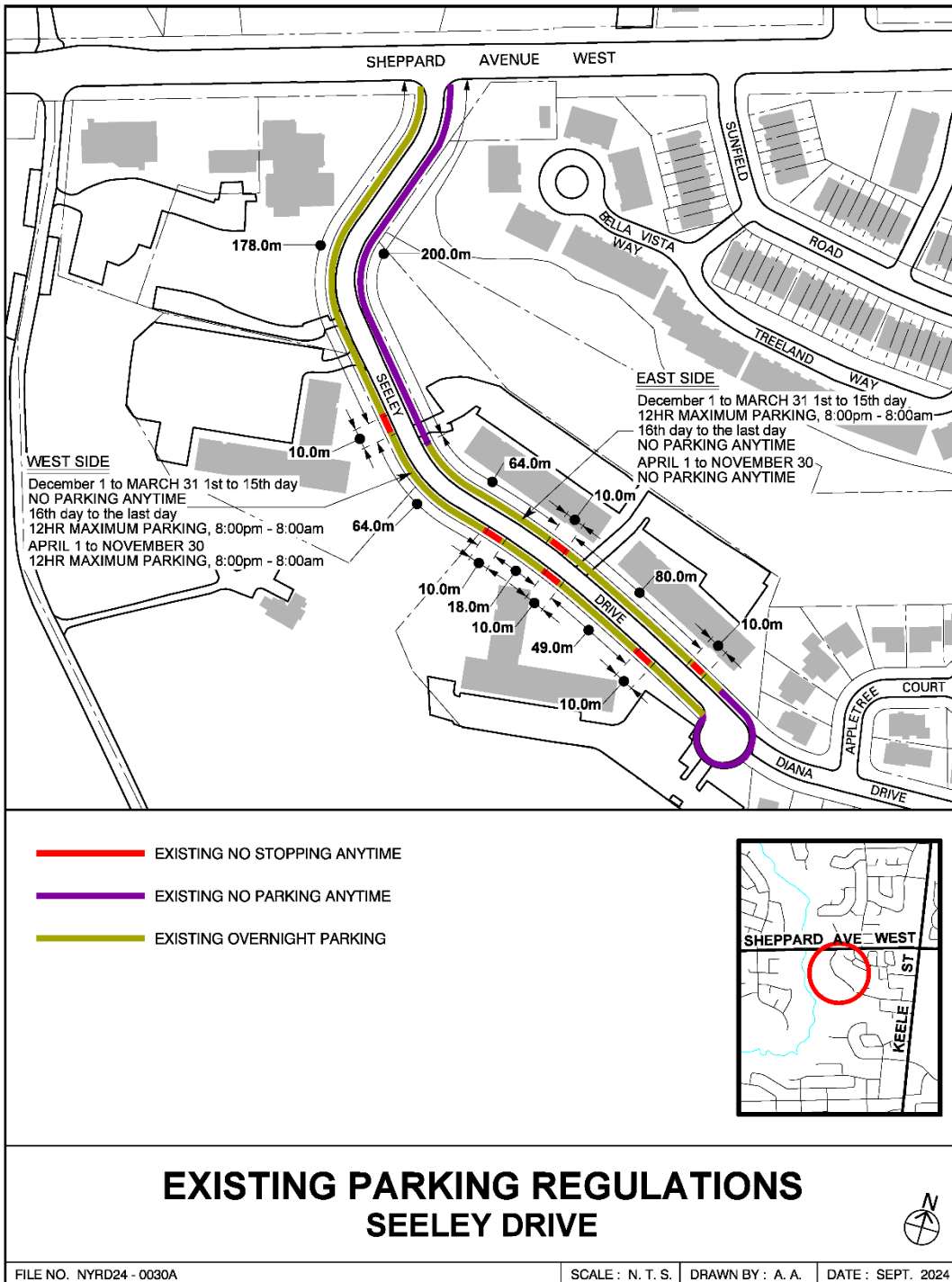
SIGNATURE

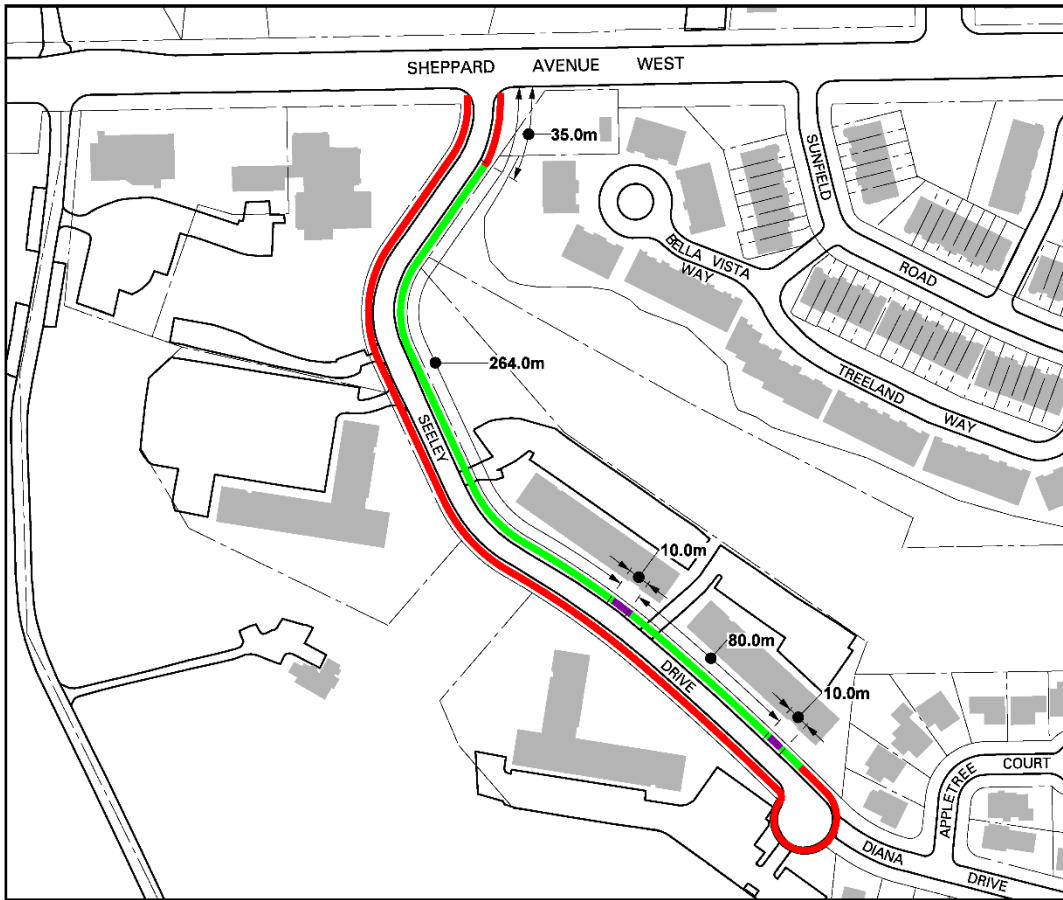
Roger Browne, M.A.Sc., P. Eng.
Director, Traffic Management, Transportation Services

ATTACHMENTS

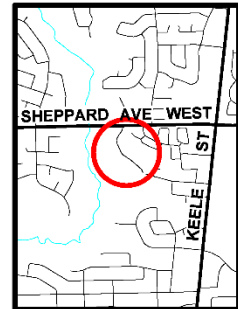
Attachment 1: Map - Parking Regulation Amendments - Seeley Drive
Attachment 2: Appendix - Parking Regulation Amendments - Seeley Drive

Attachment 1: Map - Parking Regulation Amendments - Seeley Drive





- PROPOSED NO PARKING ANYTIME
- EXISTING NO STOPPING ANYTIME (To Remain)
- PROPOSED 12HR PARKING From 8:00pm to 8:00am



PROPOSED PARKING REGULATIONS SEELEY DRIVE



FILE NO. NYRD24 - 0030B

SCALE: N. T. S.

DRAWN BY: A. A.

DATE: SEPT. 2024

Attachment 2: Appendix - Parking Regulation Amendments - Seeley Drive

To Be Rescinded/Removed:

Schedule 13(XIII): No Parking

Highway	Side	Between	Prohibited Times and/or Days
Seeley Drive	East	A point 274 metres south of Sheppard Avenue West and a point 354 metres south of Sheppard Avenue West	Anytime, Apr. 1 to Nov. 30
Seeley Drive	East	A point 364 metres south of Sheppard Avenue West and the south end of Seeley Drive	Anytime, Apr. 1 to Nov. 30
Seeley Drive	East	Sheppard Avenue West and a point 200 metres south	Anytime
Seeley Drive	East	A point 200 metres south of Sheppard Avenue West and A point 264 metres south of Sheppard Avenue West	Anytime, Apr. 1 to Nov. 30

Schedule 15 (XV): Parking for Restricted Periods

Highway	Side	Between	Time and/or Days	Maximum Period Permitted
Seeley Drive	West	A point 262 metres south of Sheppard Avenue West and a point 280 metres south of Sheppard Avenue West	8:00 p.m. to 8:00 a.m., Apr. 1 to Nov. 30	12 hours
Seeley Drive	West	A point 290 metres south of Sheppard Avenue West and a point 339 metres south of Sheppard Avenue West	8:00 p.m. to 8:00 a.m., Apr. 1 to Nov. 30	12 hours
Seeley Drive	West	A point 349 metres south of Sheppard Avenue West and the south end of Seeley Drive	8:00 p.m. to 8:00 a.m., Apr. 1 to Nov. 30	12 hours

Highway	Side	Between	Time and/or Days	Maximum Period Permitted
Seeley Drive	West	Sheppard Avenue West and a point 178 metres south of Sheppard Avenue West	8:00 p.m. to 8:00 a.m., Apr. 1 to Nov. 30	12 hours
Seeley Drive	West	A point 188 metres south of Sheppard Avenue West and a point 252 metres south of Sheppard Avenue West	8:00 p.m. to 8:00 a.m., Apr. 1 to Nov. 30	12 hours

Schedule 14 (XIV) : No Stopping

Highway	Side	Between	Prohibited Times and/or Days
Seeley Drive	West	A point 178 metres south of Sheppard Avenue West and a point 10 metres south thereof	Anytime
Seeley Drive	West	A point 252 metres south of Sheppard Avenue West Anytime and a point 10 metres south thereof	Anytime
Seeley Drive	West	A point 280 metres south of Sheppard Avenue West and a point 10 metres south thereof	Anytime
Seeley Drive	West	A point 339 metres south of Sheppard Avenue West and a point 10 metres south thereof	Anytime

To Be Implemented/Installed:

Schedule 13 (XIII) : No Parking

Highway	Side	Between	Prohibited Times and/or Days
Seeley Drive	West	Sheppard Avenue West and the south end of Seeley Drive.	Anytime

Highway	Side	Between	Prohibited Times and/or Days
Seeley Drive	East	Sheppard Avenue West and a point 35 metres further south	Anytime

Schedule 15 (XV): Parking for Restricted Periods

Highway	Side	Between	Time and/or Days	Maximum Period Permitted
Seeley Drive	East	A point 35 metres south of Sheppard Avenue West and a point 264 metres south of Sheppard Avenue West	8:00 p.m. to 8:00 a.m.	12 hours
Seeley Drive	East	A point 274 metres south of Sheppard Avenue West and a point 354 metres south of Sheppard Avenue West	8:00 p.m. to 8:00 a.m.	12 hours
Seeley Drive	East	A point 364 metres south of Sheppard Avenue West and the south end of Seeley Drive	8:00 p.m. to 8:00 a.m.	12 hours