



PB13.5

938, 944 and 950 King Street West and 95, 97 and 99 Strachan Avenue – Demolition of Heritage Properties with Conditions

PB13.5

938, 944 and 950 King Street West
and 95, 97 and 99 Strachan Avenue



This location map is for information purposes only; the exact boundaries of the property are not shown. The arrow marks the location of the site.



PB13.5

938, 944 and 950 King Street West
and 95, 97 and 99 Strachan Avenue



Aerial view of subject properties

PB13.5
938, 944 and 950 King Street West
and 95, 97 and 99 Strachan Avenue



Palace Arms

PB13.5
938, 944 and 950 King Street West
and 95, 97 and 99 Strachan Avenue

Rendering of approved scheme



PB13.5
938, 944 and 950 King Street West
and 95, 97 and 99 Strachan Avenue



Photographs of condition of exterior masonry

PB13.5

938, 944 and 950 King Street West
and 95, 97 and 99 Strachan Avenue

-  Incompatible Brick Replacement
-  Component with Salvage Potential
-  Rubbed Brick/ Not Suitable for Salvage
-  Deteriorated Field Brick/ Not Suitable for Salvage











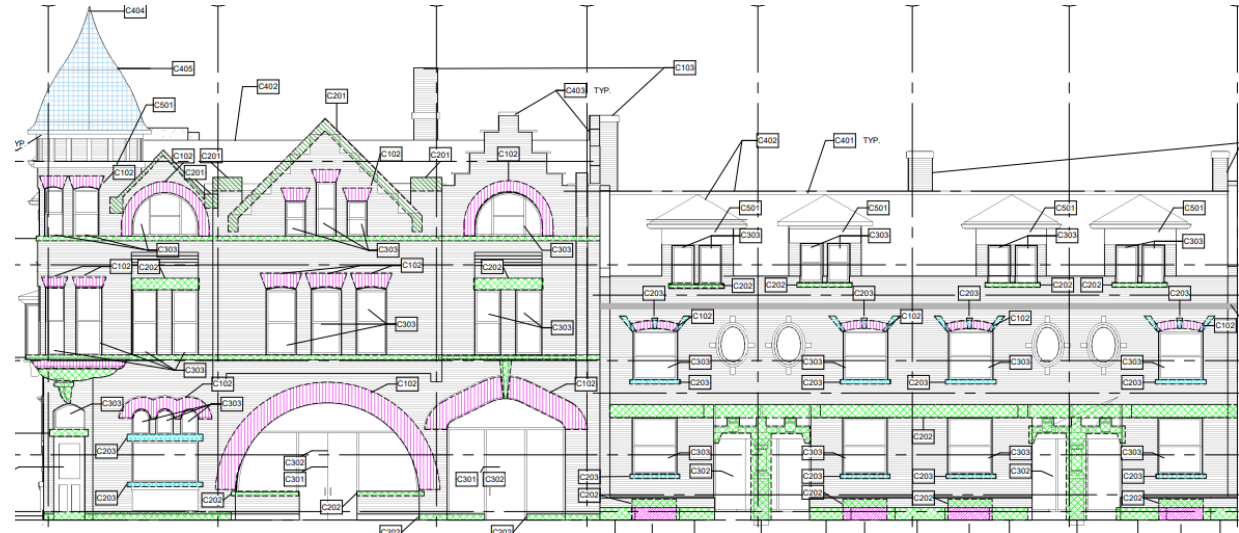
Elevations showing façade condition

PB13.5

938, 944 and 950 King Street West and 95, 97 and 99 Strachan Avenue

Legend

-  Recessed masonry infill at previous basement window openings.
-  Custom Moulded brick
-  Replicated stone masonry
-  Repaired stone masonry
-  New stone masonry based on existing components
-  Reinstate turret roof with slate replacing asphalt shingles
-  Repair salvaged decorative metal elements
-  Replicate decorative metal elements



Elevations of reconstructed facades