



PB15.2

6 and 8 Cawthra Square– Notice of Intention to Designate a Property under Part IV, Section 29 of the Ontario Heritage Act

PB15.2 6 & 8 Cawthra Sq.

This location map is for illustrative purposes only; the exact boundaries of the property are not shown.



PB15.2
6 & 8 Cawthra Sq.



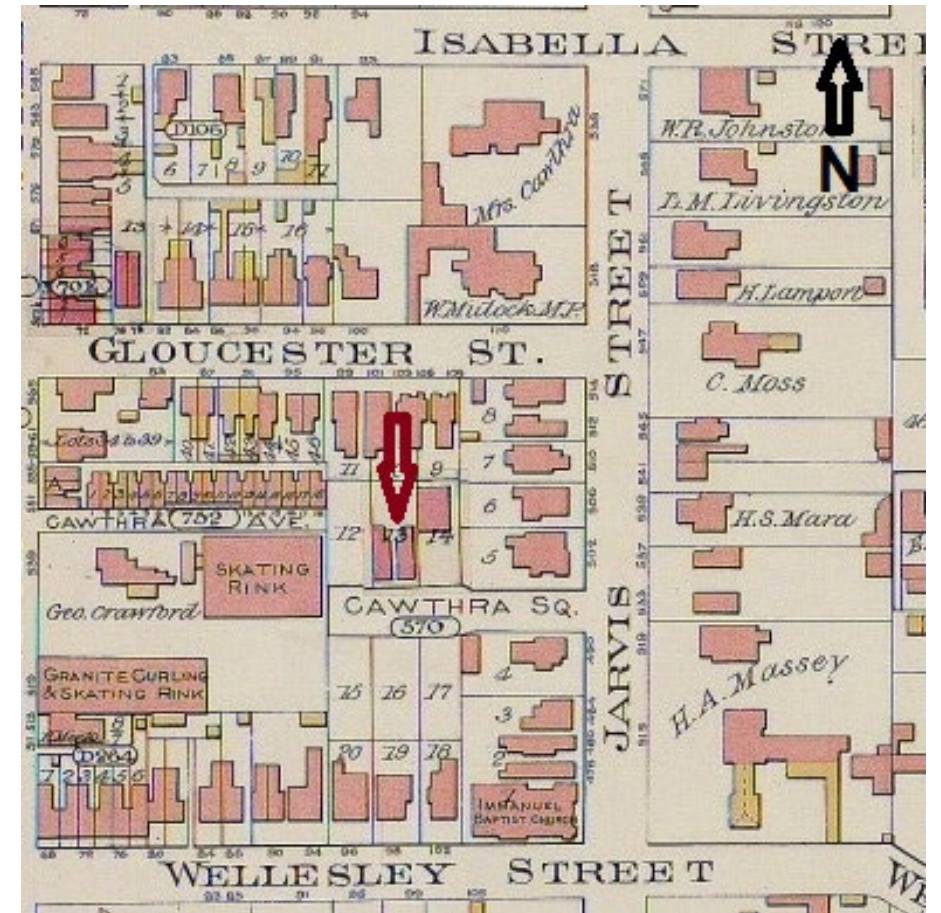
6 and 8 Cawthra Square, 2024 (City of Toronto Heritage Planning)

PB15.2
6 & 8 Cawthra Sq.



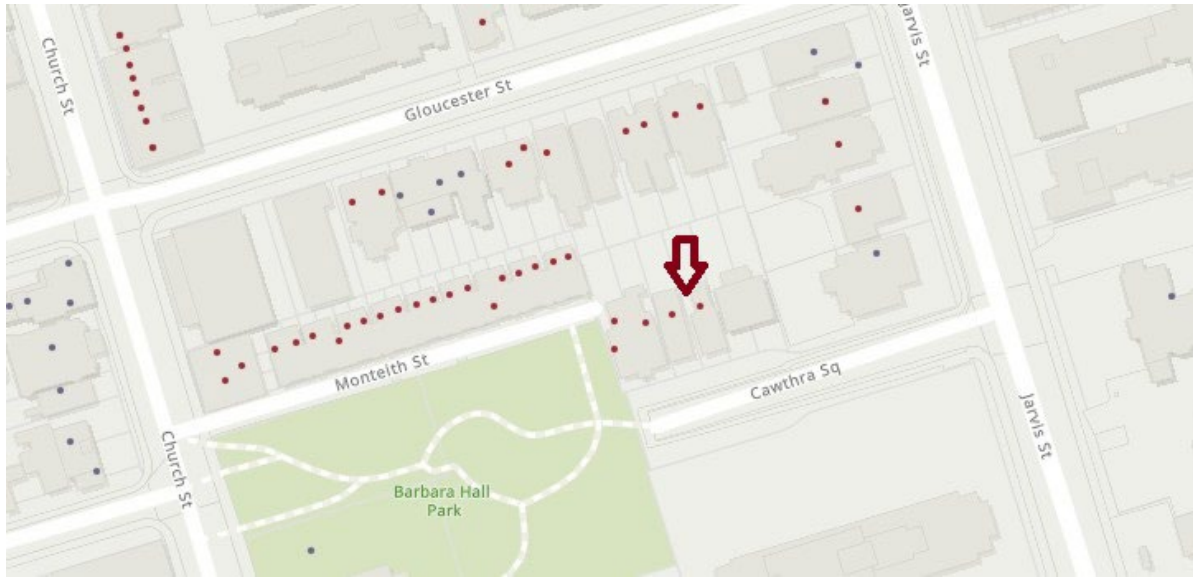
City of Toronto Archives, Fonds 200, Series 376, File 3, Item 37

Historic image of 6 and 8 Cawthra Square at left of photo, showing original elaborate spindle work verandah detailing and other decorative trim, 1901 (Fonds 200, Series 376, File 3, City of Toronto Archives).



Atlas of the City of Toronto, 1893 (Chas. E. Goad Company). Showing the 6 and 8 Cawthra Square in context.

PB15.2
6 & 8 Cawthra Sq.

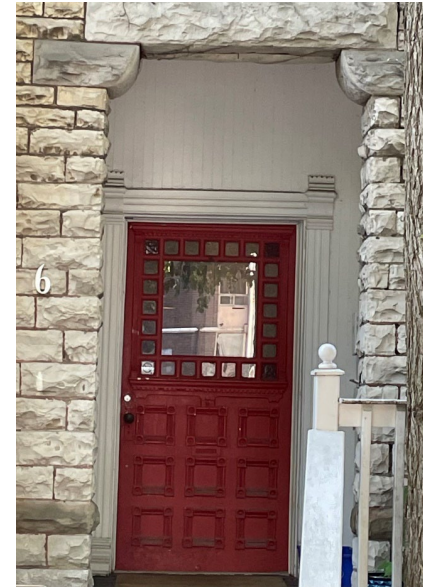
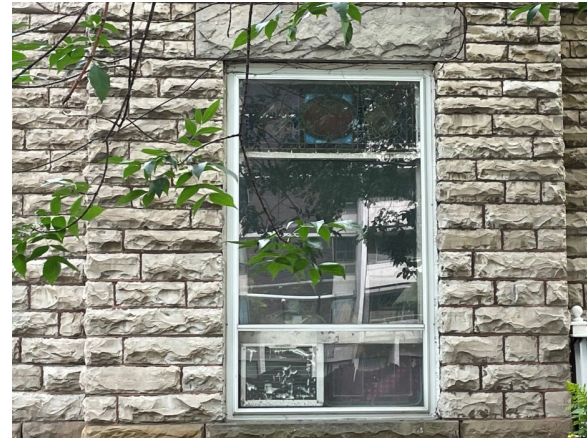


Context of 6 and 8 Cawthra Square, surrounded by a concentration of listed and designated properties on Toronto's Heritage Register, 2024 (City of Toronto)



Historic image showing 6 and 8 Cawthra Square in context with 10 Cawthra Square to left of photo and 2 Cawthra Square (former Gooderham coach house) in original location to the right, 1973 (Fonds 2043, Series 1587, Subseries 1, City of Toronto Archives).

PB15.2
6 & 8 Cawthra Sq.



6 Cawthra Square, main elevation and detailing, 2023 (City of Toronto Heritage Planning)

PB15.2
6 & 8 Cawthra Sq.



8 Cawthra Square, main elevation and detailing, 2023 (City of Toronto Heritage Planning)