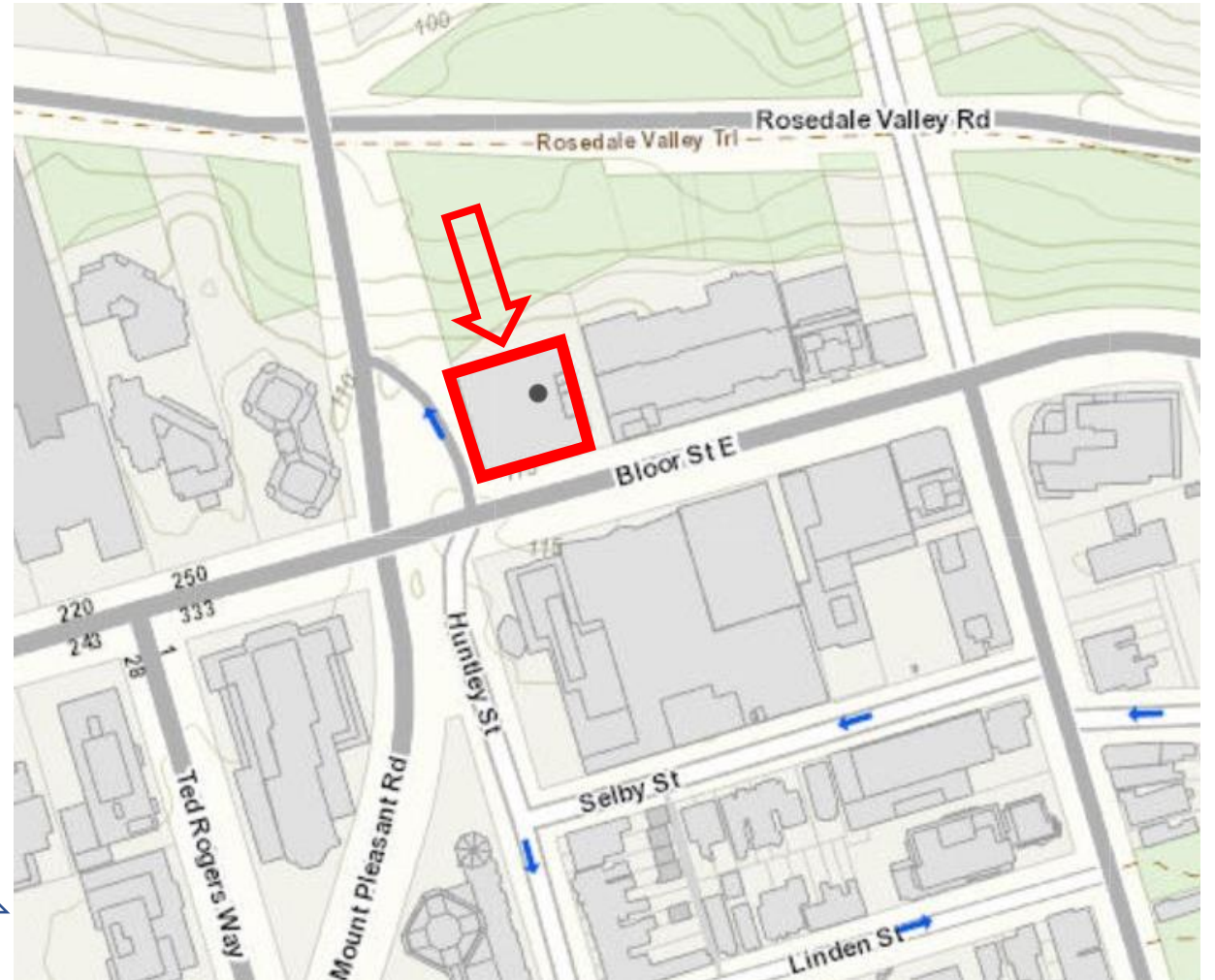




PB15.5

350 Bloor Street East- Demolition of a Designated Heritage Property with Conditions

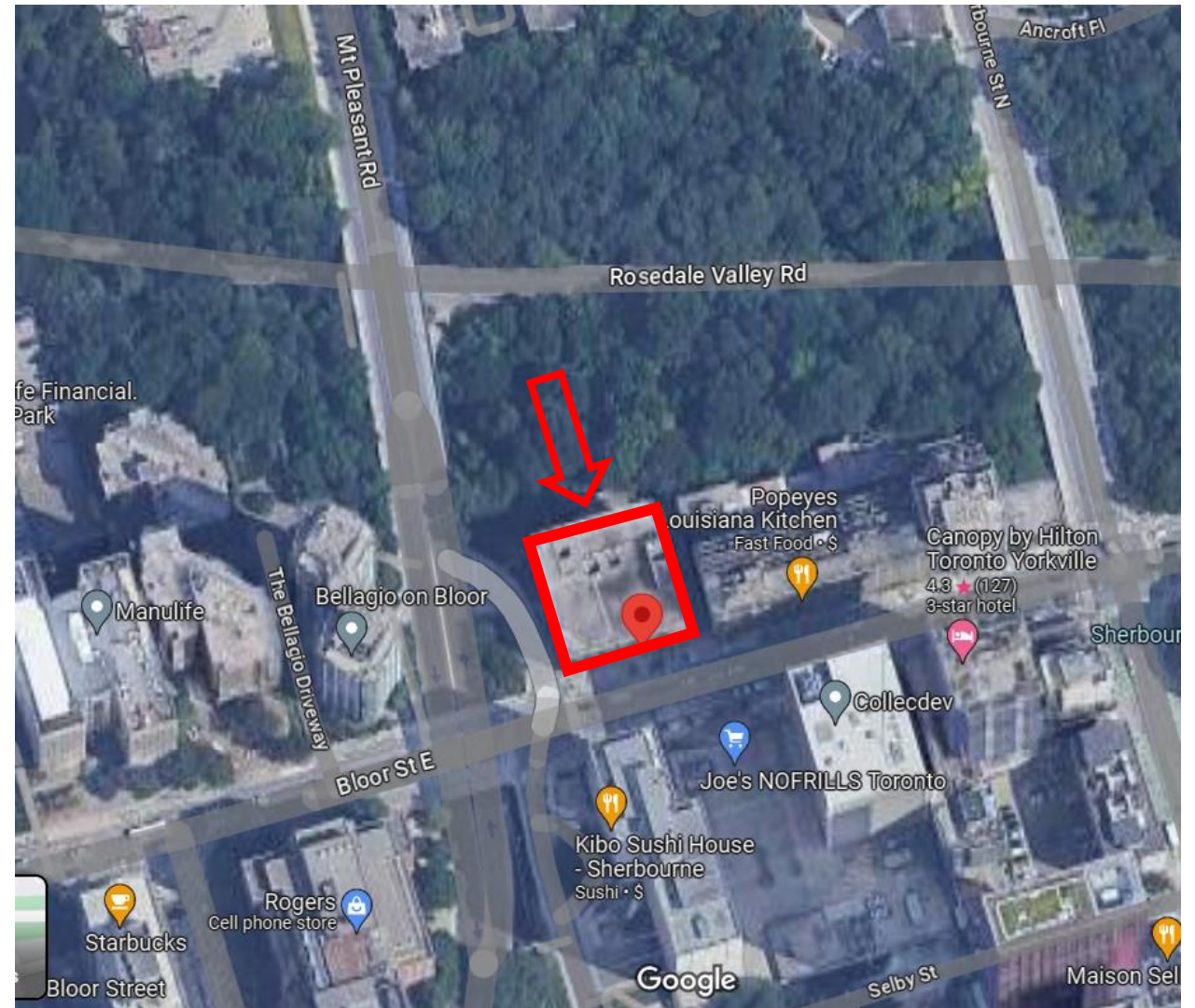
PB15.5
350 Bloor Street East



This location map is for information purposes only; the exact boundaries of the property is not shown. The arrow marks the location of the site.

PB15.5
350 Bloor Street East

Aerial View-
350 Bloor Street East (Google Maps 2023)



PB15.5
350 Bloor Street East

View of the primary (south) elevation of 350 Bloor Street East taken from across Bloor Street (Heritage Planning, 2023)

View looking northeast showing the south and west elevations of 350 Bloor Street East (Heritage Planning, 2023)



PB15.5
350 Bloor Street East

View of the north elevation with a colonnaded pedestrian terrace and exposed lower level with entrance to the second lower level parking garage. (Heritage Planning, 2023)



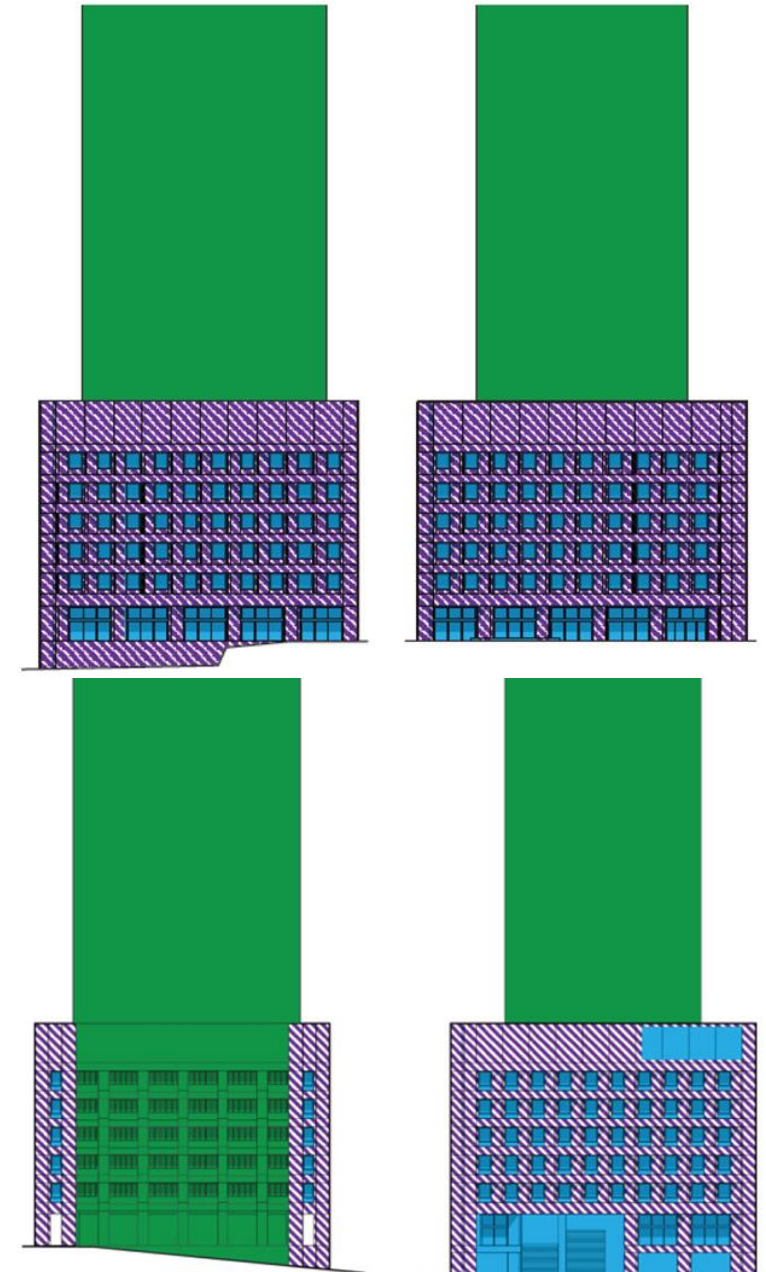
View of southwest corner of the building showing the east elevation with a predominant blank wall (Heritage Planning, 2023)



PB15.5 350 Bloor Street East

Proposed Building Elevations

- DEMOLISHED
- ALTERED
- SALVAGE & REINSTATEMENT
- NEW CONSTRUCTION

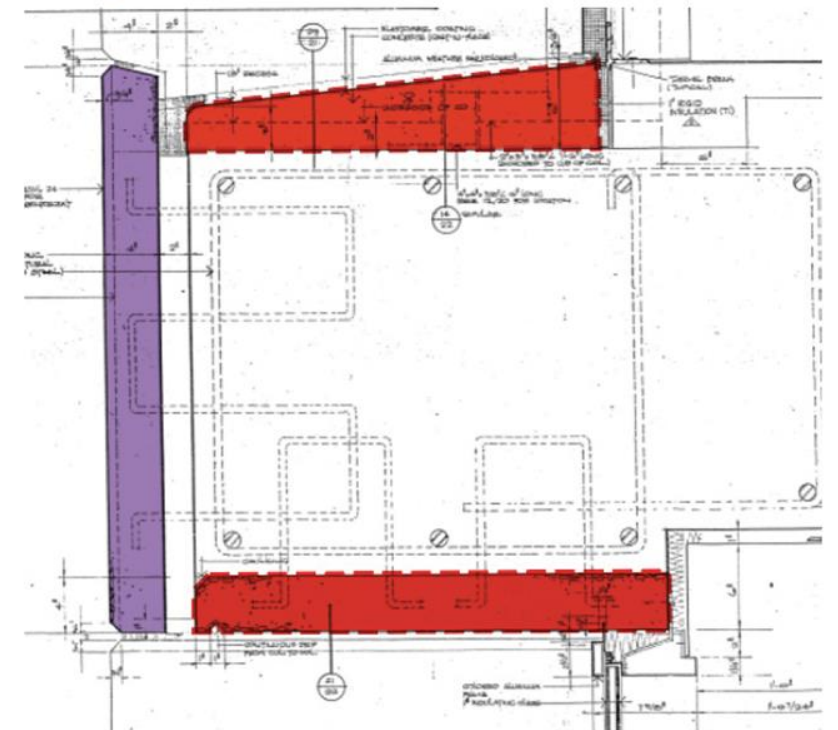
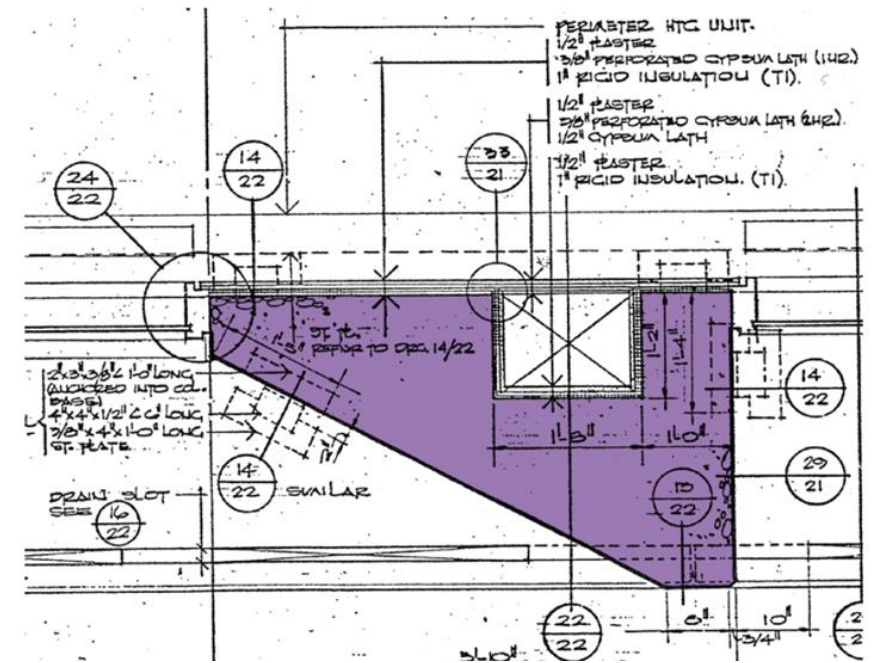


Diagrams illustrating salvaged and reinstated west (upper left), south and north elevations (upper right and lower right respectively) and partial reinstatement of the east elevation (bottom left).

Green indicates new construction.

(Source: ERA Architects Inc.)

PB15.5
350 Bloor Street East

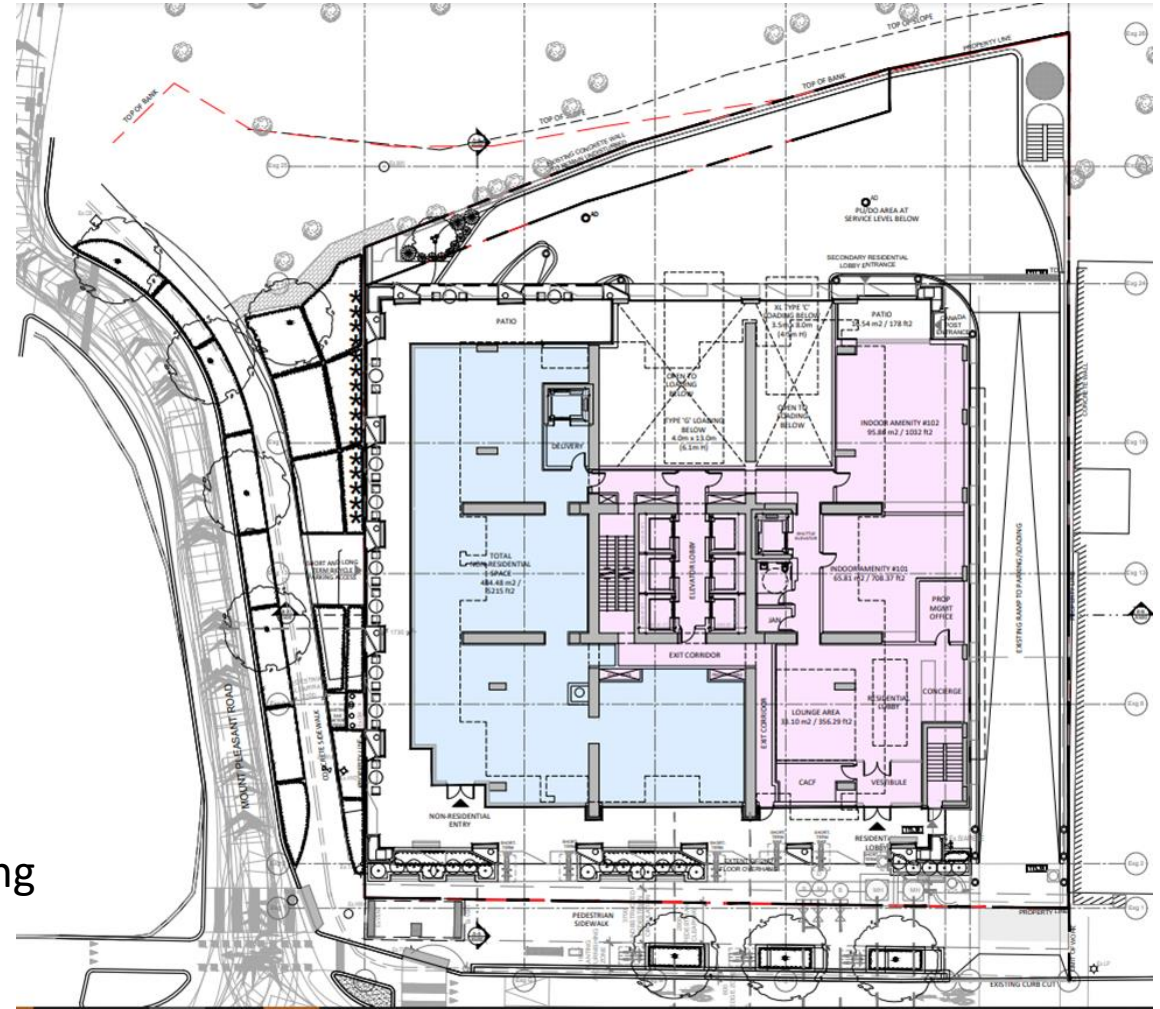


Detail of existing column (above) and existing sill (below).
Cladding identified in purple will be re-instated with sill and
soffits (shown in red) replaced with new elements.
(John Parkin and Associates annotated by ERA)

PB15.5

350 Bloor Street East

Ground floor plan of proposed tower development showing residential areas in pink and non-residential area in blue (Source: Hariri Pontarini Architects 2023)



PB15.5

350 Bloor Street East

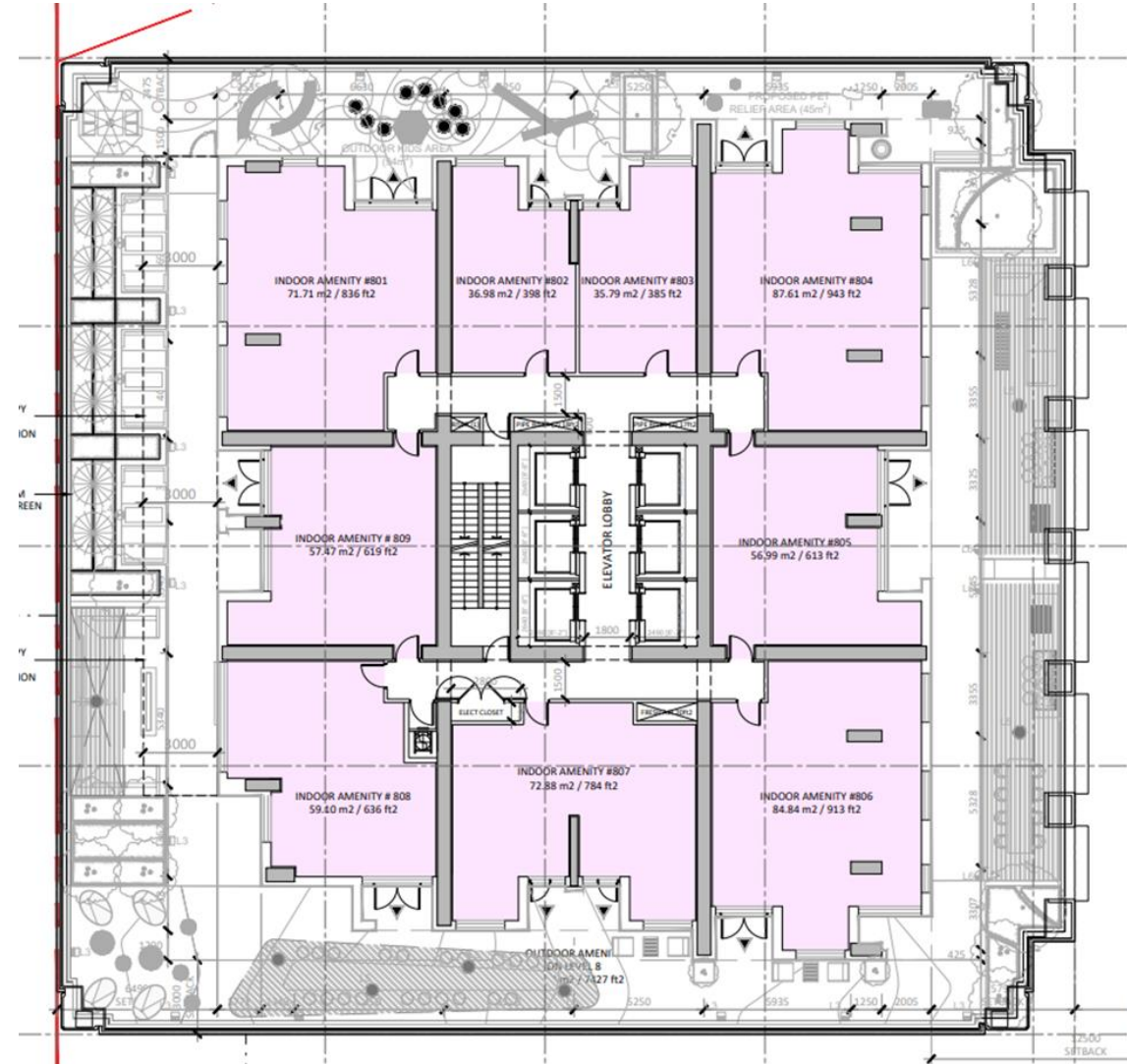
Proposed 2nd Level
(Source: Hariri Pontarini Architects 2023)



PB15.5

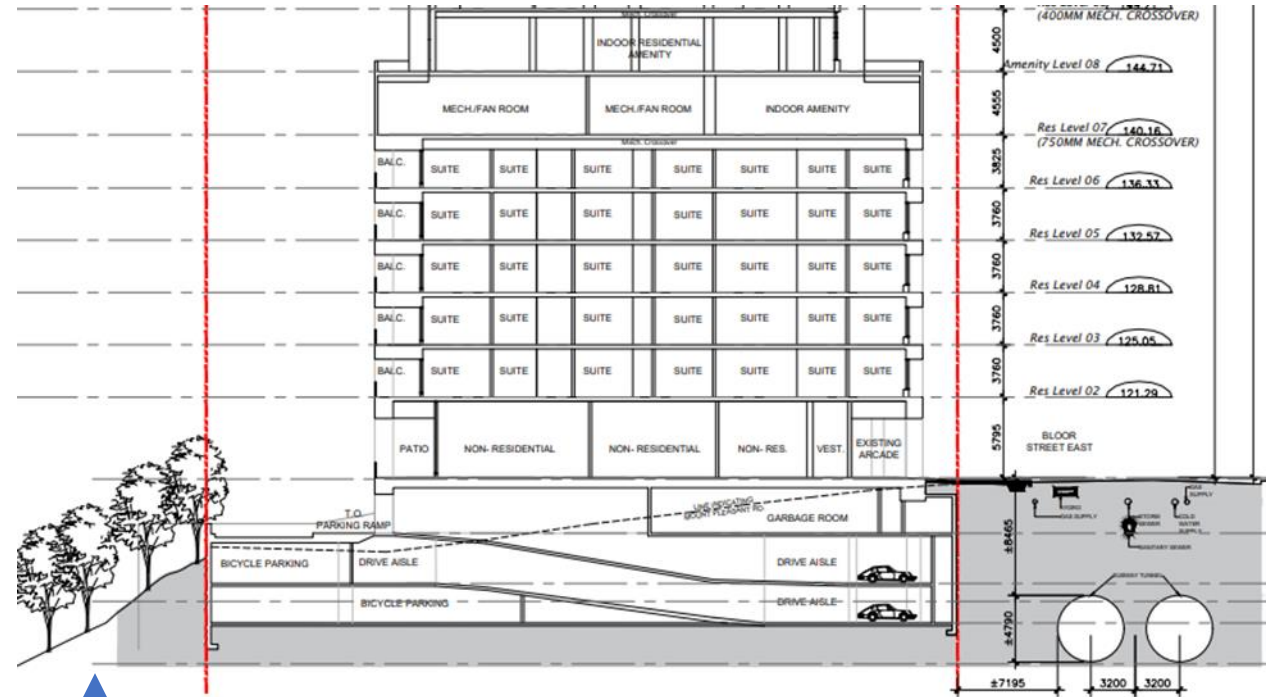
350 Bloor Street East

Proposed 8th Level – Amenity Floor
(Source: Hariri Pontarini Architects 2023)



PB15.5

350 Bloor Street East



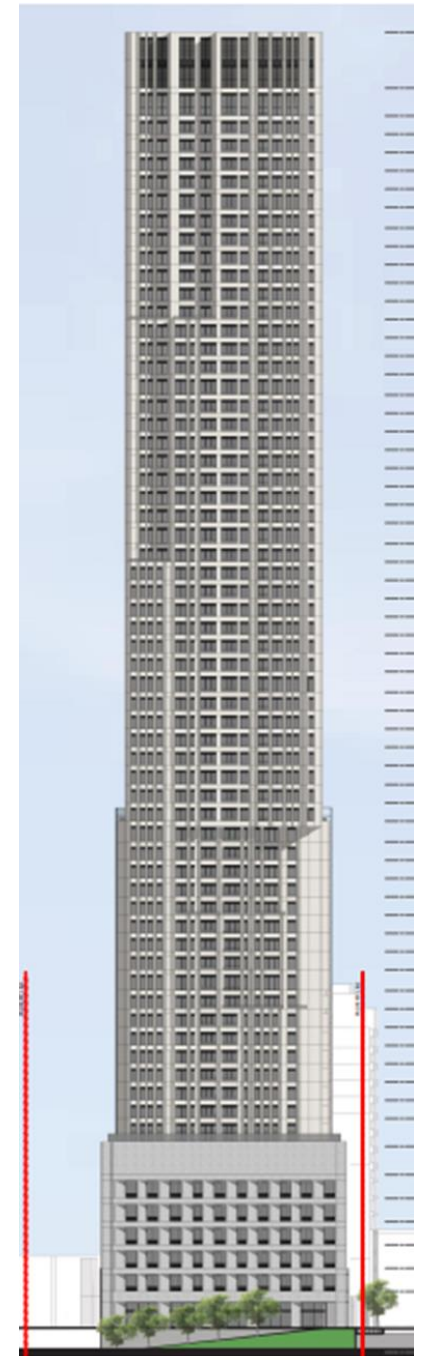
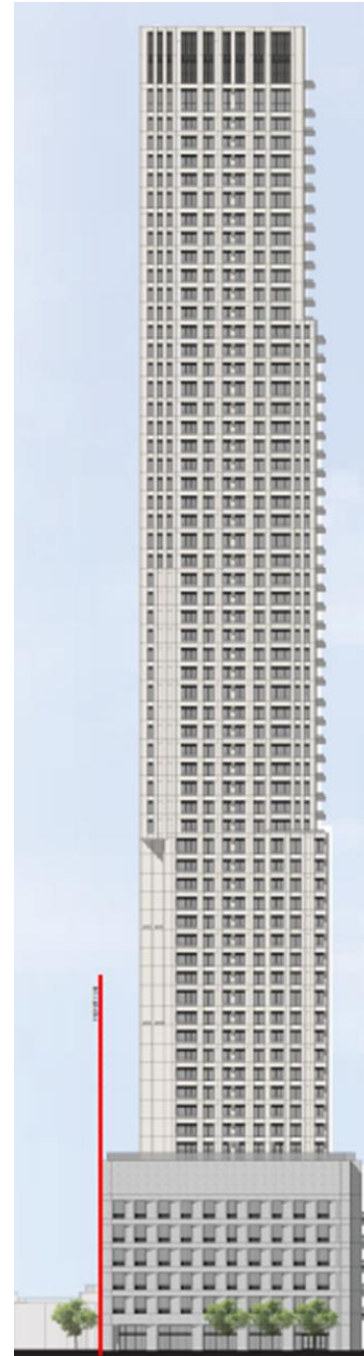
↑
Rosedale
Valley
ravine

↑
subway

Partial Section North-South through new podium showing stepbacks at level 8 and relationship to the ravine and subway.
(Source: Hariri Pontarini Architects 2023)

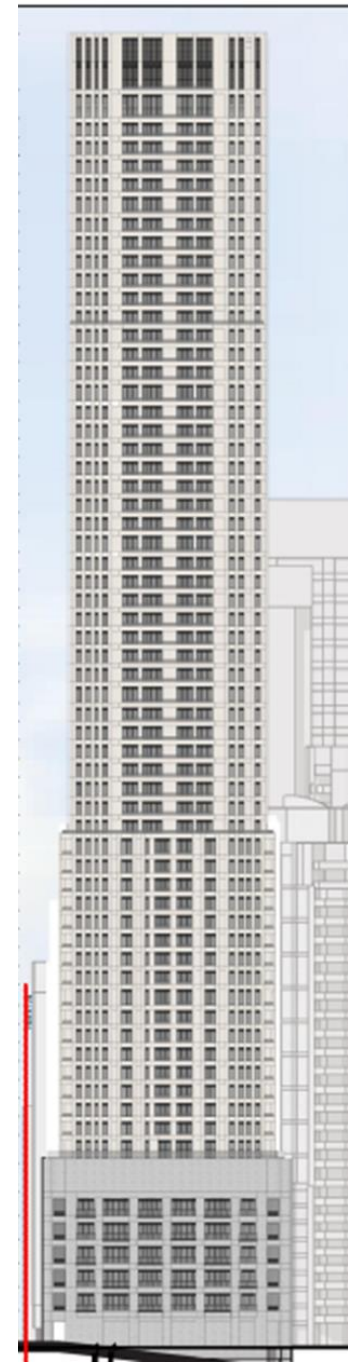
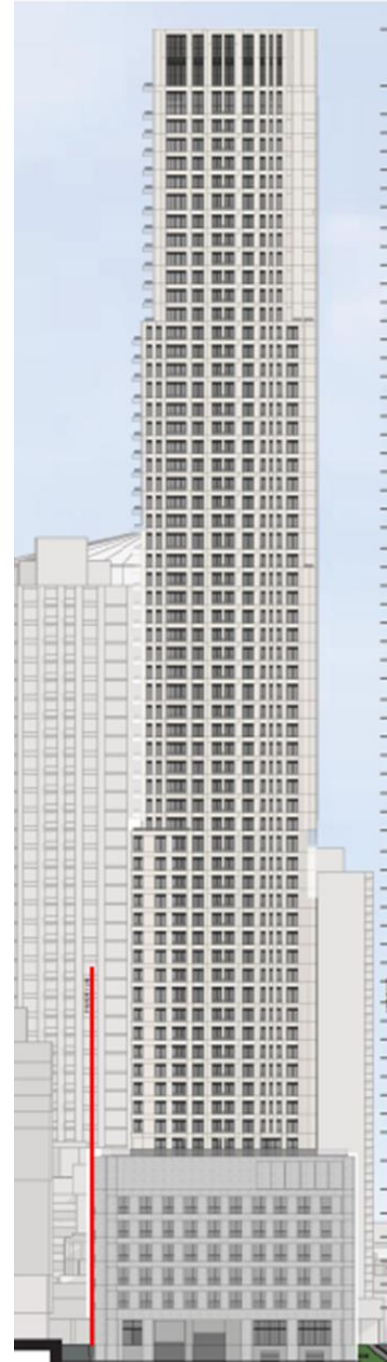
PB15.5
350 Bloor Street East

Views of the primary (south) and west elevations
of the proposed development
(Source: Hariri Pontarini Architects 2023)



PB15.5
350 Bloor Street East

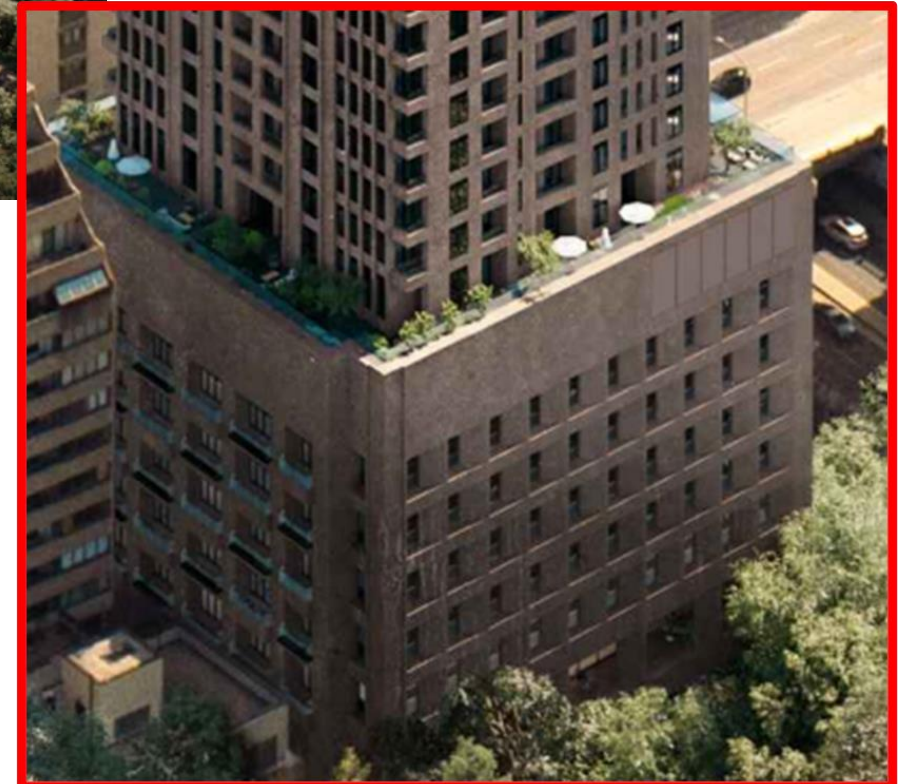
Views of the north (ravine) and east elevations
of the proposed development
(Source: Hariri Pontarini Architects 2023)



PB15.5
350 Bloor Street East



PB15.5
350 Bloor Street East



Aerial view of the new project looking southwest with the reconstruction of the heritage building enlarged in the lower view. (Source: Hariri Pontarini Architects 2023)

PB15.5
350 Bloor Street East

Thank You!

