



# PB16.7

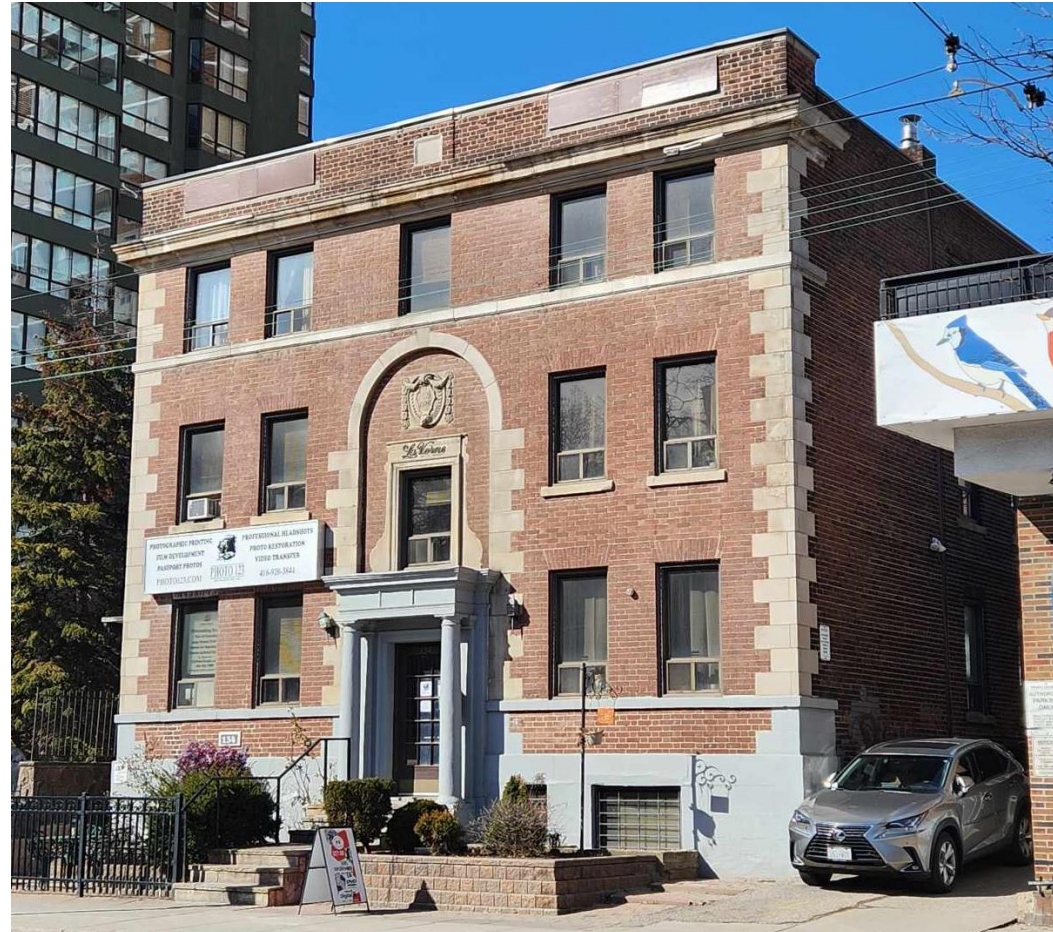
**134 Carlton Street, 50 Richmond Street  
East and 860 Richmond Street West –  
Inclusion on the Heritage Register**

# PB16.7

## 134 Carlton Street



This location map is for information purposes only; the exact boundaries of the properties are not shown. The arrow marks the location of the site.



Constructed in 1926, the subject property, known as the LaVerne Apartments, holds design and physical value as a representative example of an early-twentieth century walk-up apartment building designed in the Georgian Revival style. The subject property is also associated with Baldwin and Green Architects and Engineers.

# PB16.7

## 50 Richmond Street East



This location map is for information purposes only; the exact boundaries of the properties are not shown. The arrow marks the location of the site.



Constructed circa 1912, the subject property holds design and physical value as a representative example of an early-twentieth century factory/warehouse type building with Edwardian Classical detailing. The subject property is associated with Leon S. Yolles, an architect who practised in Toronto from 1910 to 1916 before forming Yolles and Rotenberg Contractors.

# PB16.7

## 860 Richmond Street West



This location map is for information purposes only; the exact boundaries of the properties are not shown. The arrow marks the location of the site.



860 Richmond Street West, Heritage Planning, 2024

Constructed in 1913, the property holds design and physical value as a representative example of an early-twentieth century factory/warehouse type building with Edwardian Classical detailing. The property also supports and maintains the mixed industrial and working-class residential character of its neighbourhood, and is physically, visually, and historically linked to its surroundings.