

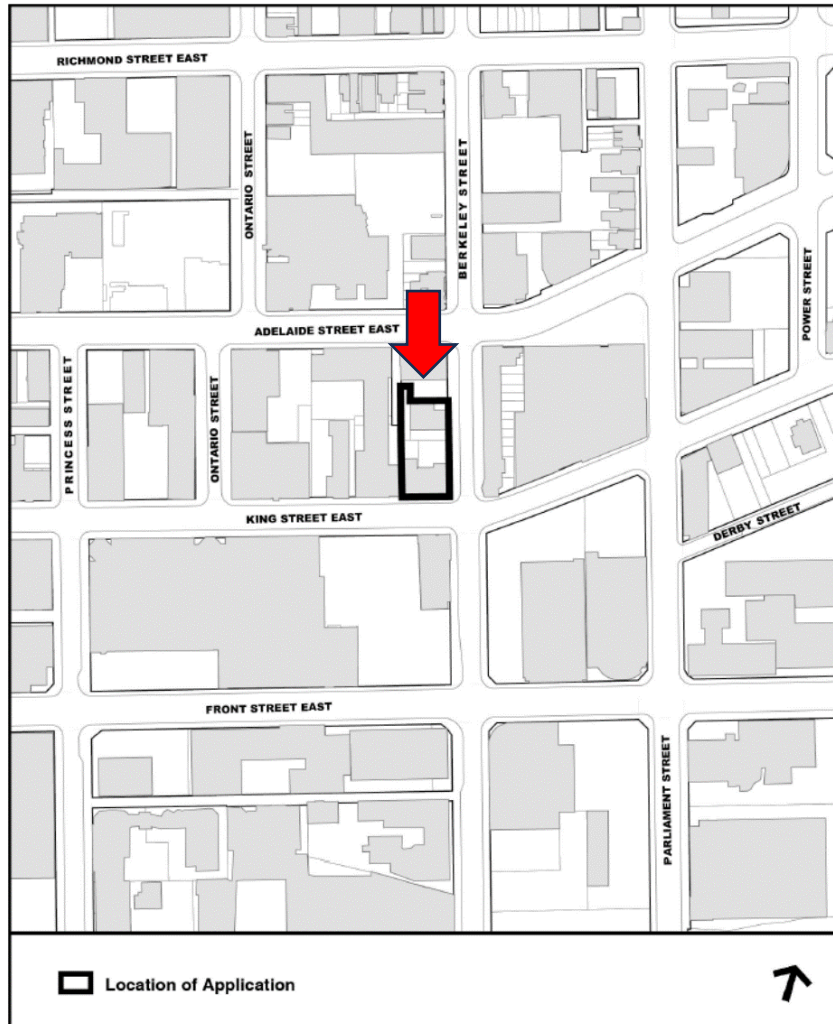


# **PB22.4**

**296-300 King Street E and 56-60 Berkeley Street –  
Alterations to a Heritage Property Under Part V, Section  
42 of the Ontario Heritage Act and Authority to Enter Into  
a Heritage Easement Agreement**

## PB22.4

### 296-300 King Street E & 56-60 Berkeley Street



#### Aerial view looking north

This location map is for information purposes only; the exact boundaries of the property are not shown. The arrow marks the location of the site.



PB22.4  
296-300 King Street E & 56-60 Berkeley Street



## PB22.4 296-300 King Street E & 56-60 Berkeley Street

South Elevation



(ERA, 2024).

North Elevation\*



(ERA, 2024).

East Elevation

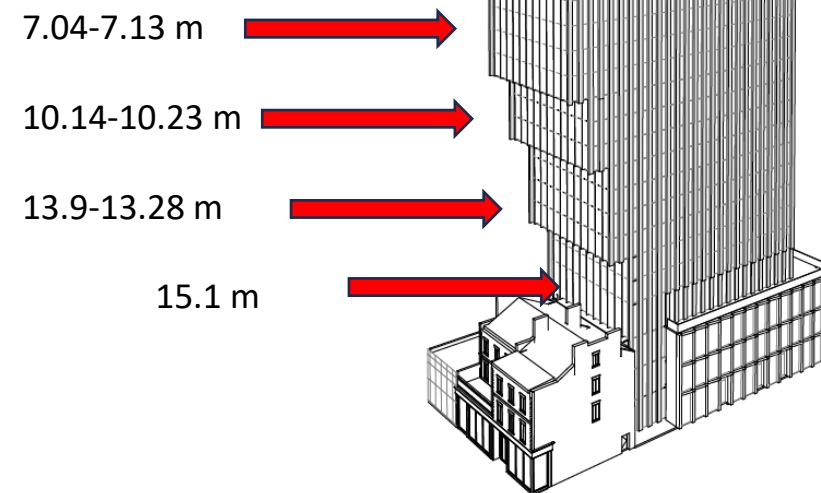


(ERA, 2024).

Remove Alter

PB22.4  
296-300 King Street E & 56-60 Berkeley Street

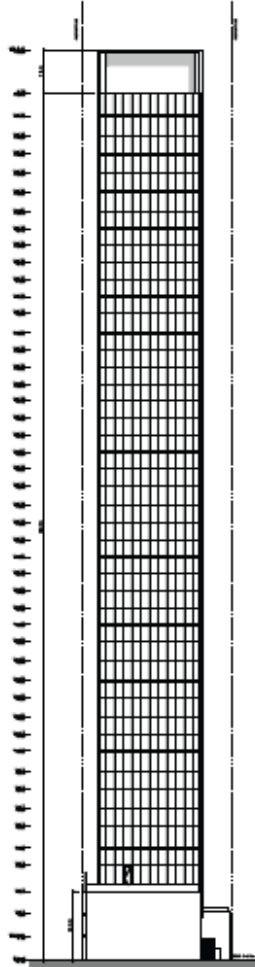
Proposal Rendering & Stepbacks



PB22.4

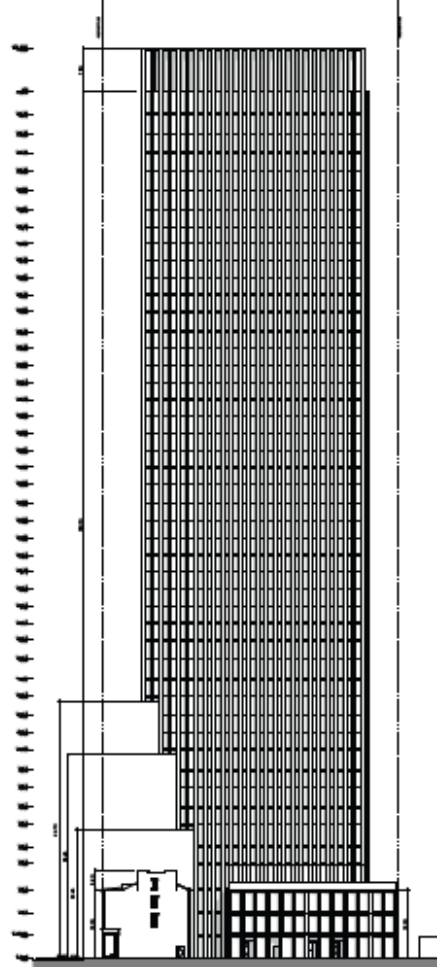
296-300 King Street E & 56-60 Berkeley Street

North elevation



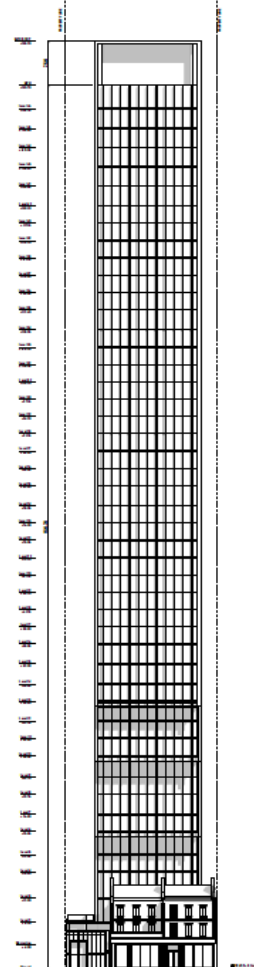
1 NORTH ELEVATION

East elevation



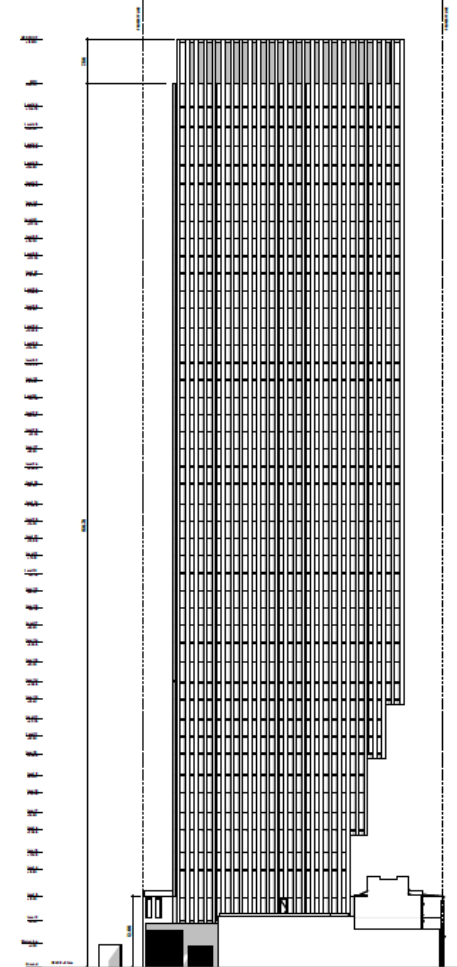
2 EAST ELEVATION

South elevation



3 SOUTH ELEVATION

West elevation



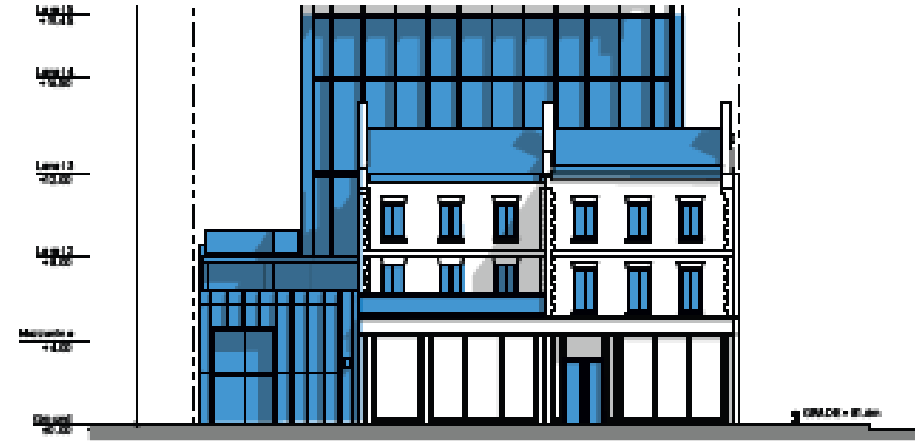
4 WEST ELEVATION

PB22.4

296-300 King Street E & 56-60 Berkeley Street

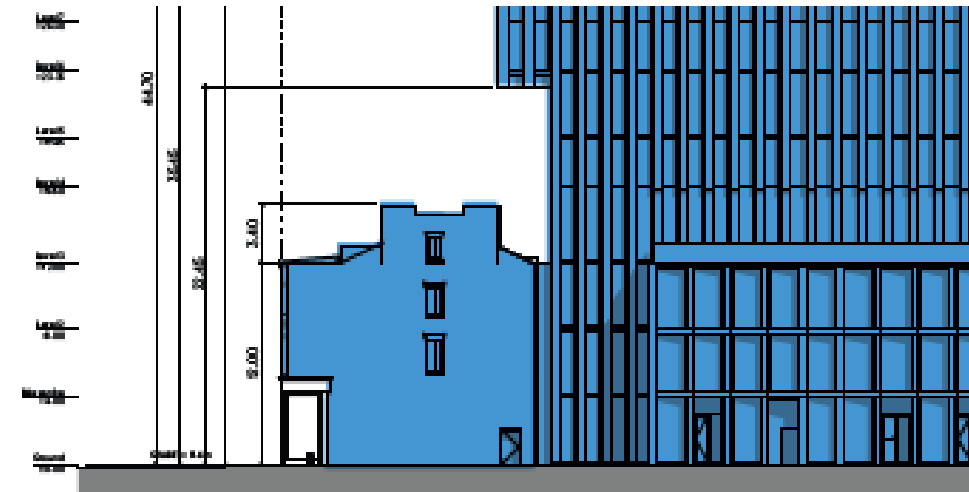
Proposed south and east elevations on retained buildings

South Elevation



(architects—Alliance; annotated by ERA).

East Elevation



(architects—Alliance; annotated by ERA).

 New construction and alterations