



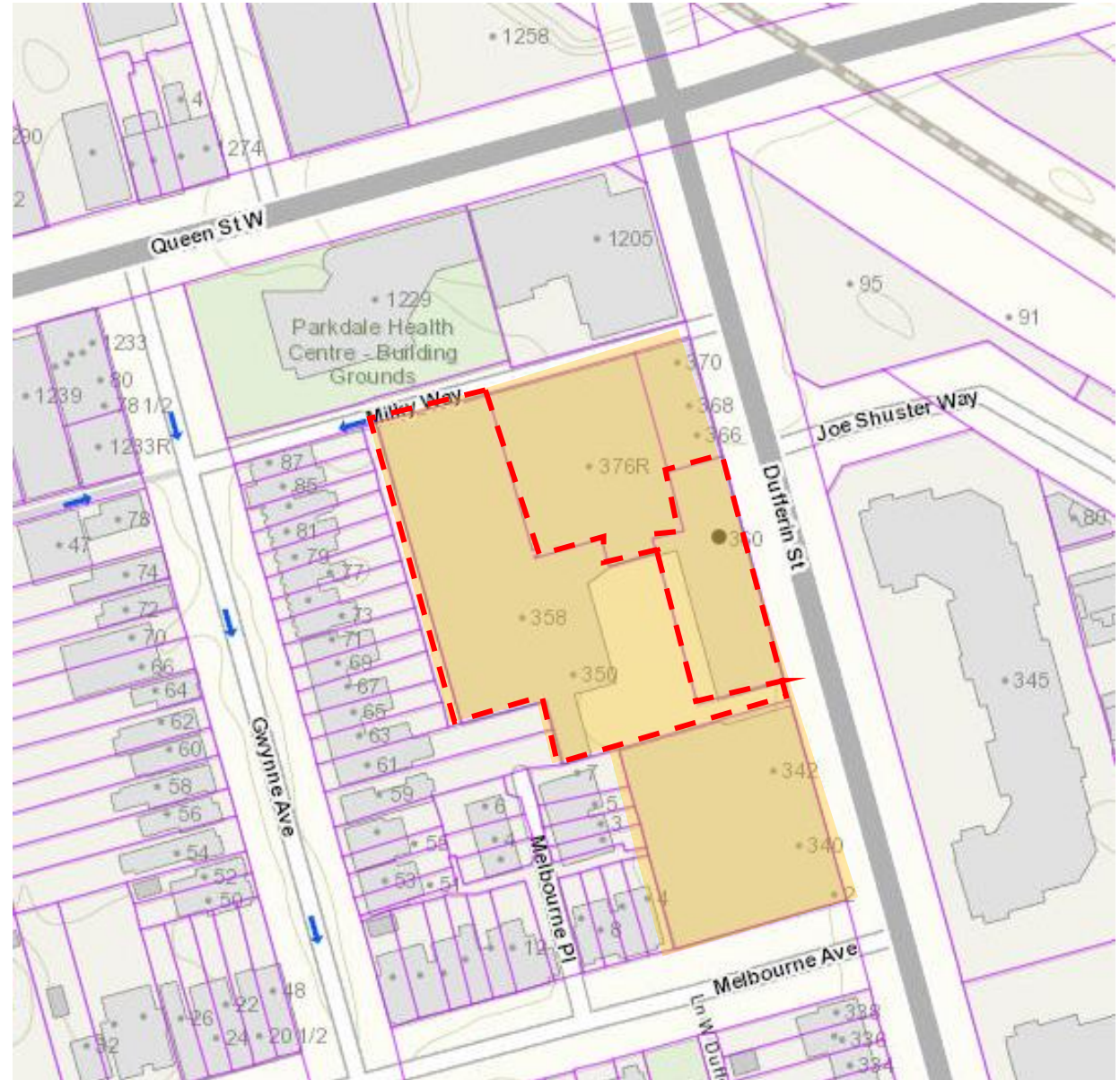
PB25.1

358-360 Dufferin Street – Notice of Intention to Designate a Property under Part IV, Section 29 of the Ontario Heritage Act

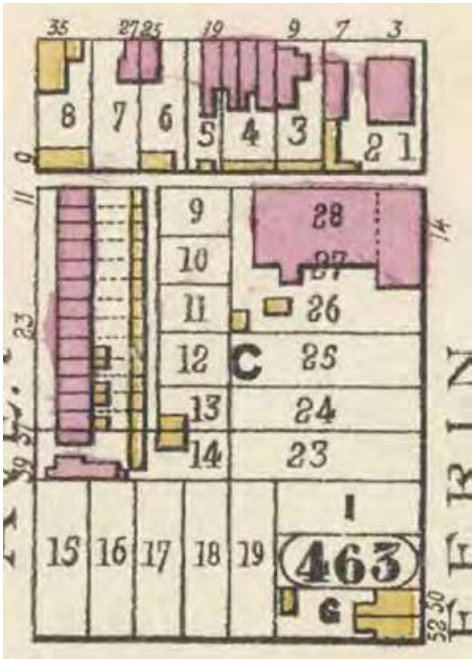
PB25.1

358-360 Dufferin Street

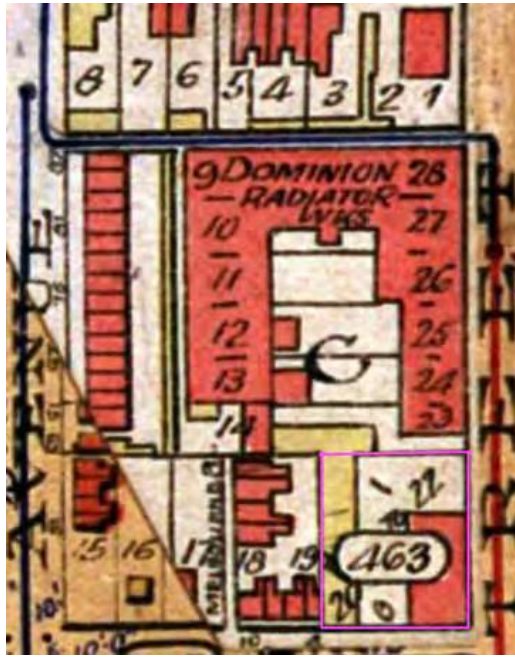
This location map is for information purposes only; the exact boundaries of the property are not shown. The arrow marks the location of the site.



PB25.1
358-360 Dufferin Street



1884 Goad's Map



1903 Goad's Map



c.1898 Archival photo looking west along Queen Street West at the new CP rail underpass at Dufferin and part of the Dominion Radiator complex (indicated by the arrow).

PB25.1
358-360 Dufferin Street



358 Dufferin St (including structure address at 350 Dufferin St): the Dominion Radiator Foundry, Core Oven & Mixing Buildings

PB25.1
358-360 Dufferin Street



360 Dufferin St: Dominion Radiator Factory Offices



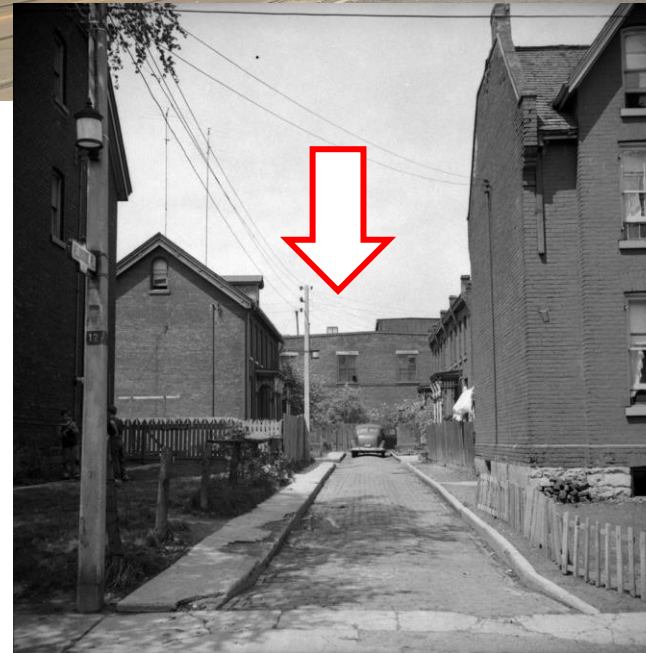
PB25.1
358-360 Dufferin Street



Above: Looking south across the central courtyard with the Factory Offices at left and the Core Oven Building at right



Top right: Looking north on Dufferin Street to the listed CP Rail underpass at Queen Street West



Bottom left and right: archival and current photos looking north along Melbourne Place to the heritage properties at 1-7 Melbourne Place and the south elevation of the adjacent Core Oven Building (indicated by the arrow)

