

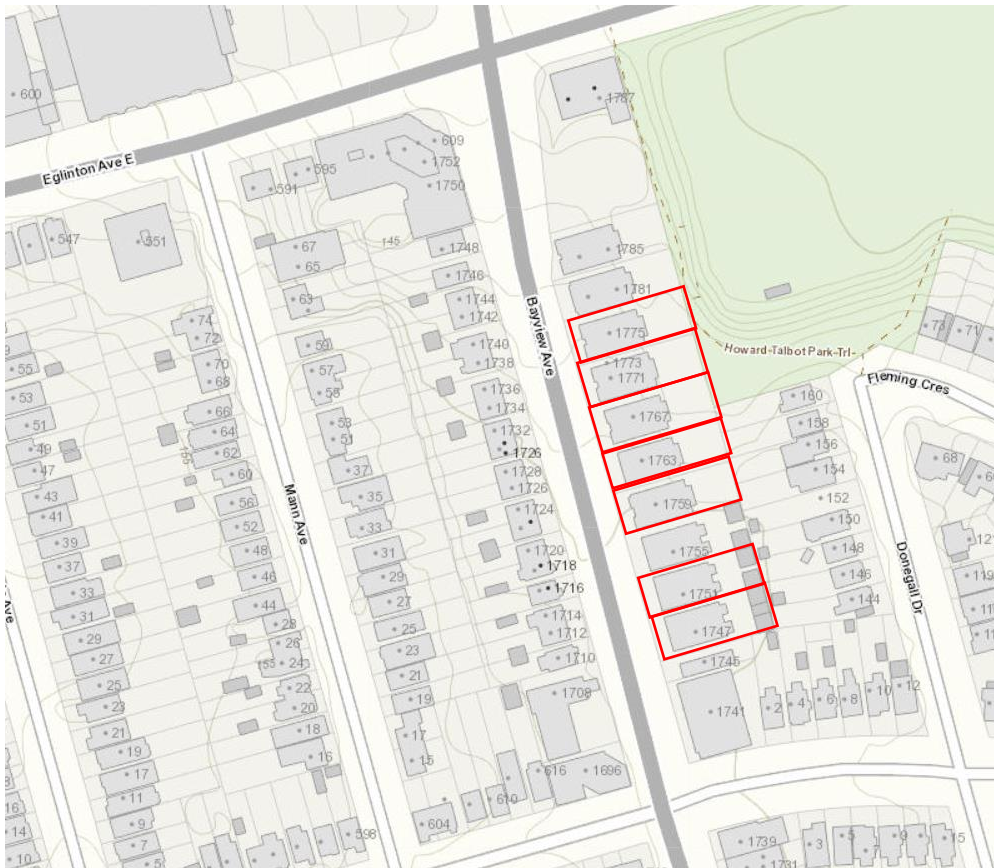


PB25.4

**1747, 1751, 1759, 1763, 1767, 1771, 1773
and 1775 Bayview Avenue – Inclusion on
the Heritage Register**

PB25.4

1747, 1751, 1759, 1763, 1767, 1771, 1773 and 1775 Bayview Avenue



This location map is for information purposes only; the exact boundaries of the property are not shown. The arrow marks the location of the site.



Looking south from 1767 Bayview Avenue (left) and looking south from 1775 Bayview Avenue, Heritage Planning, 2024.

Constructed in the mid-1930s, the properties hold physical value as two-storey, house-form buildings purposely designed to contain four residential units.

The properties are associated with Henry H. Talbot, a local builder, property developer, and Mayor of Leaside (1938-1947), and with W. Breden Galbraith, a well-known and prolific residential architect.

The subject properties form part of a collection of ten contiguous, four-unit, two-storey apartment buildings, along the east side of Bayview Avenue between Eglinton Avenue East and Parkhurst Boulevard.

PB25.4

1747, 1751, 1759, 1763, 1767, 1771, 1773 and 1775 Bayview Avenue



1747 Bayview Avenue



1751 Bayview Avenue



1759 Bayview Avenue



1763 Bayview Avenue



1767 Bayview Avenue



1771, 1773 Bayview Avenue



1775 Bayview Avenue