

Villiers Island & Keating West Public Art Master Plan

Art Trail Location Detail Maps

Appendix 1

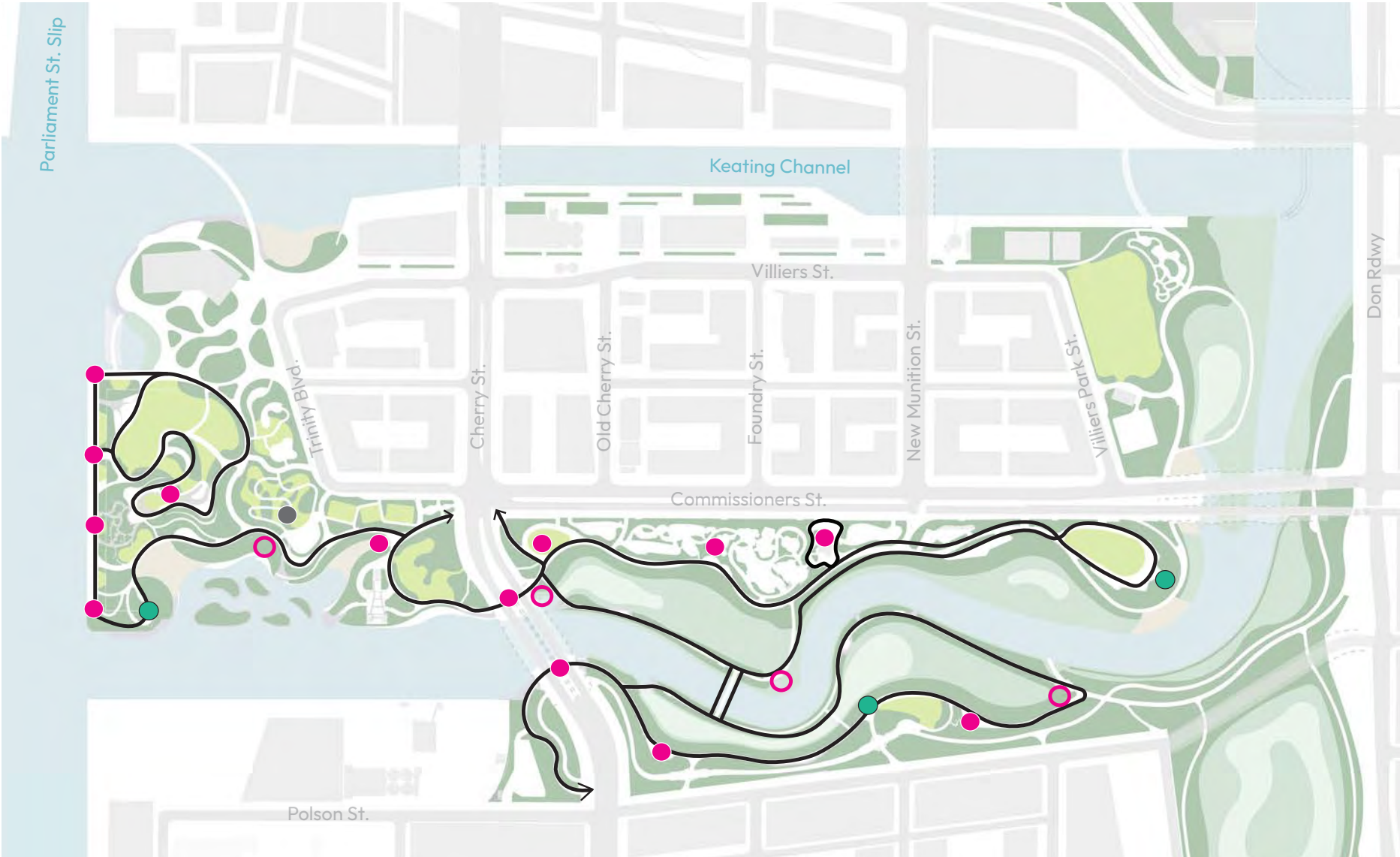


Art Trail Map

- Permanent Art - Served
- Temporary Art - Served
- Temporary Art - Not Served
- Future Pavilion
- Art Walk

Ephemeral art that does not require infrastructure can occur throughout park and floodplain.

Permanent environmental barrier located 1m below finish grade in Promontory Park South and 1.5m below finish grade in River Valley Park North and South. Any art foundations below the environmental barrier must consider additional environmental restrictions/ approvals.



Art Trail - Servicing Plan

- No Servicing
- Electric Only
- Electric + Water
- Electric + Water + Data
- Art Walk

Note:
Tie down anchors for temporary art are located along Harbour Esplanade and Fire Hall #30 Plaza with a design working load of 3,000 lbs.



Permanent Art

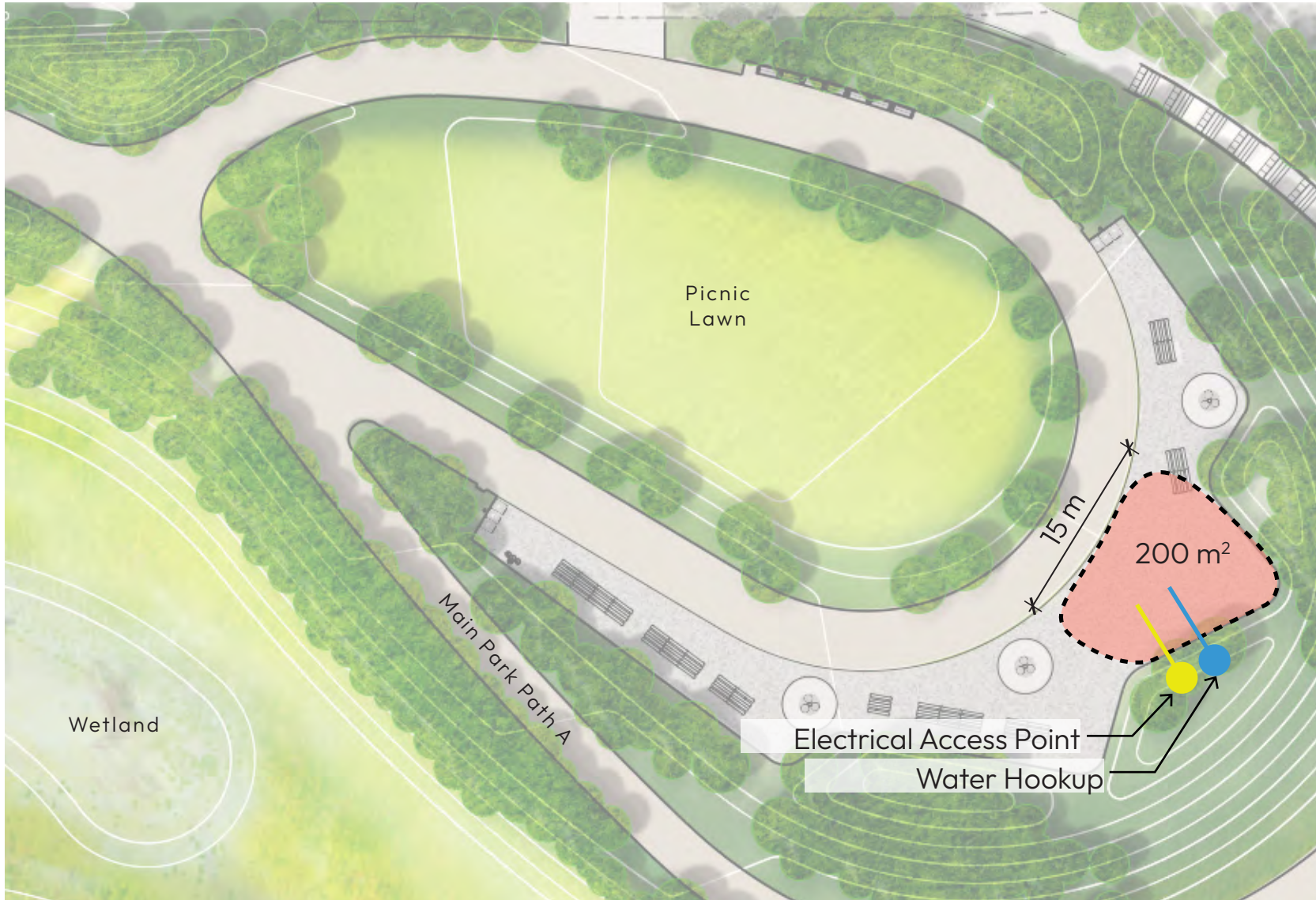
Promontory Park South - Canoe Cove Overlook



- Permanent Art
- Infrastructure: Electric (20A) and Water (Hose Bib)
- Surface: Screened limestone



River Park North - Picnic Lawn Overlook

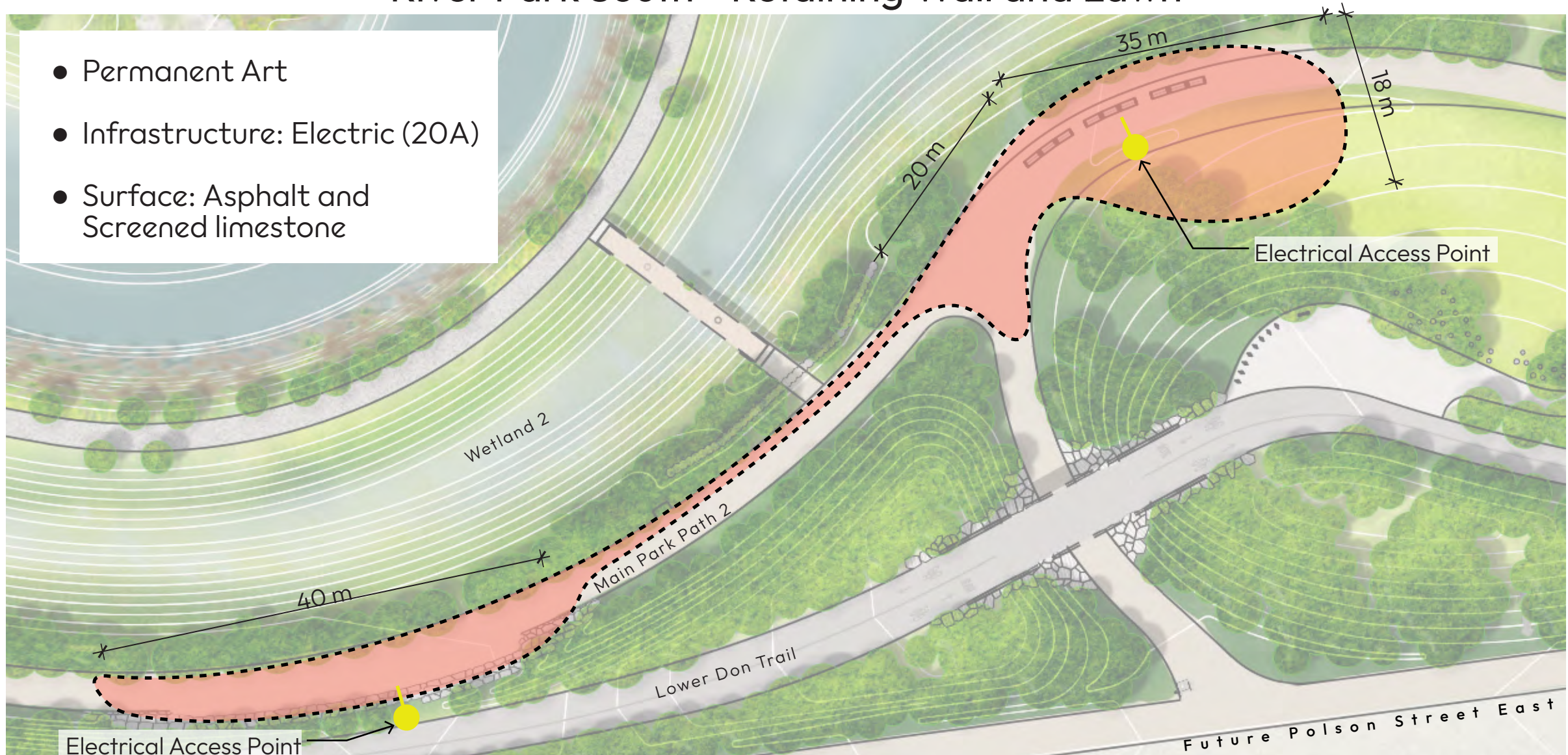


- Permanent Art
- Infrastructure: Electric (20A) and Water (Hose Bib)
- Surface: Screened limestone



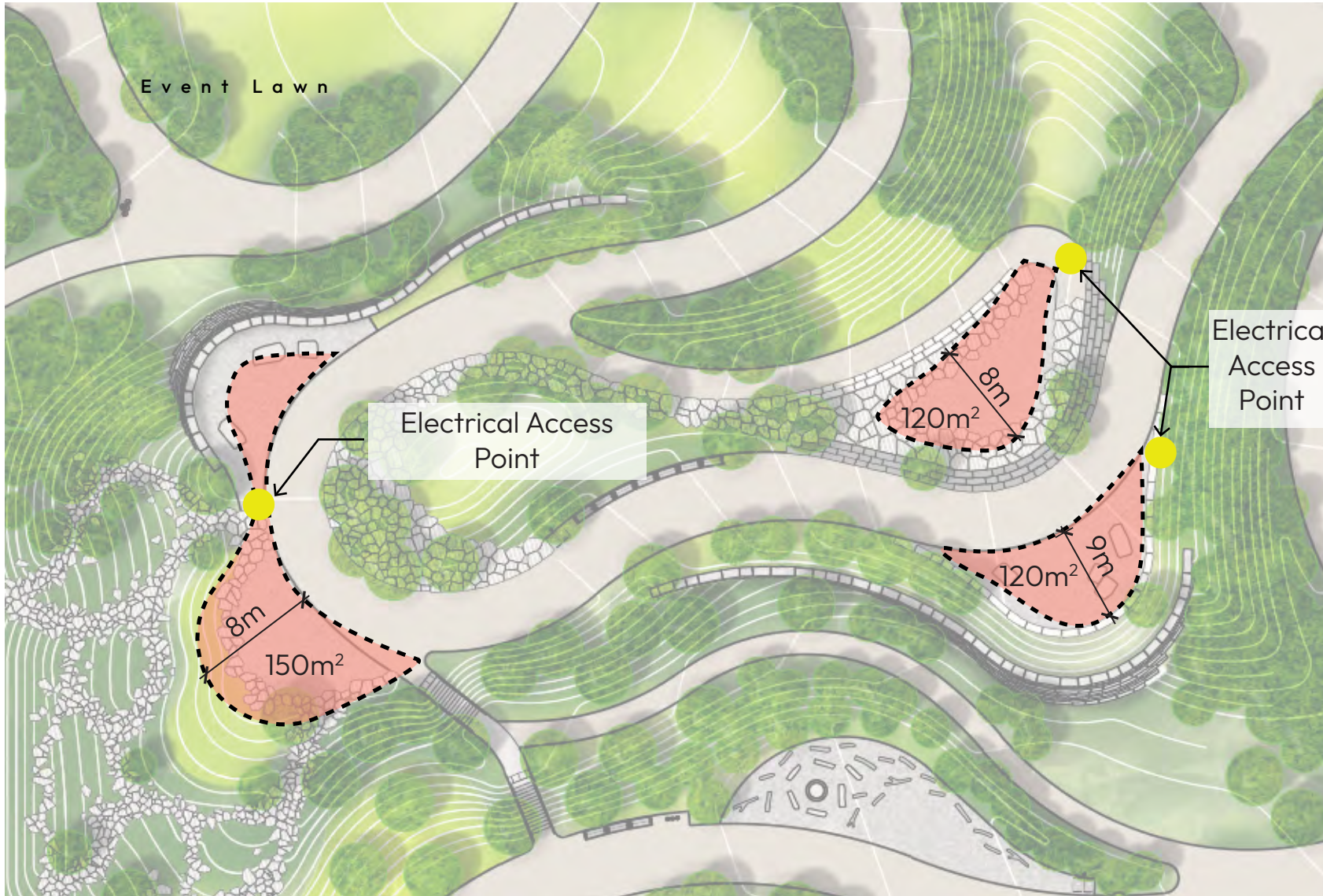
River Park South - Retaining Wall and Lawn

- Permanent Art
- Infrastructure: Electric (20A)
- Surface: Asphalt and Screened limestone



Temporary Art – with Servicing

Promontory Park South - Promontory Overlook



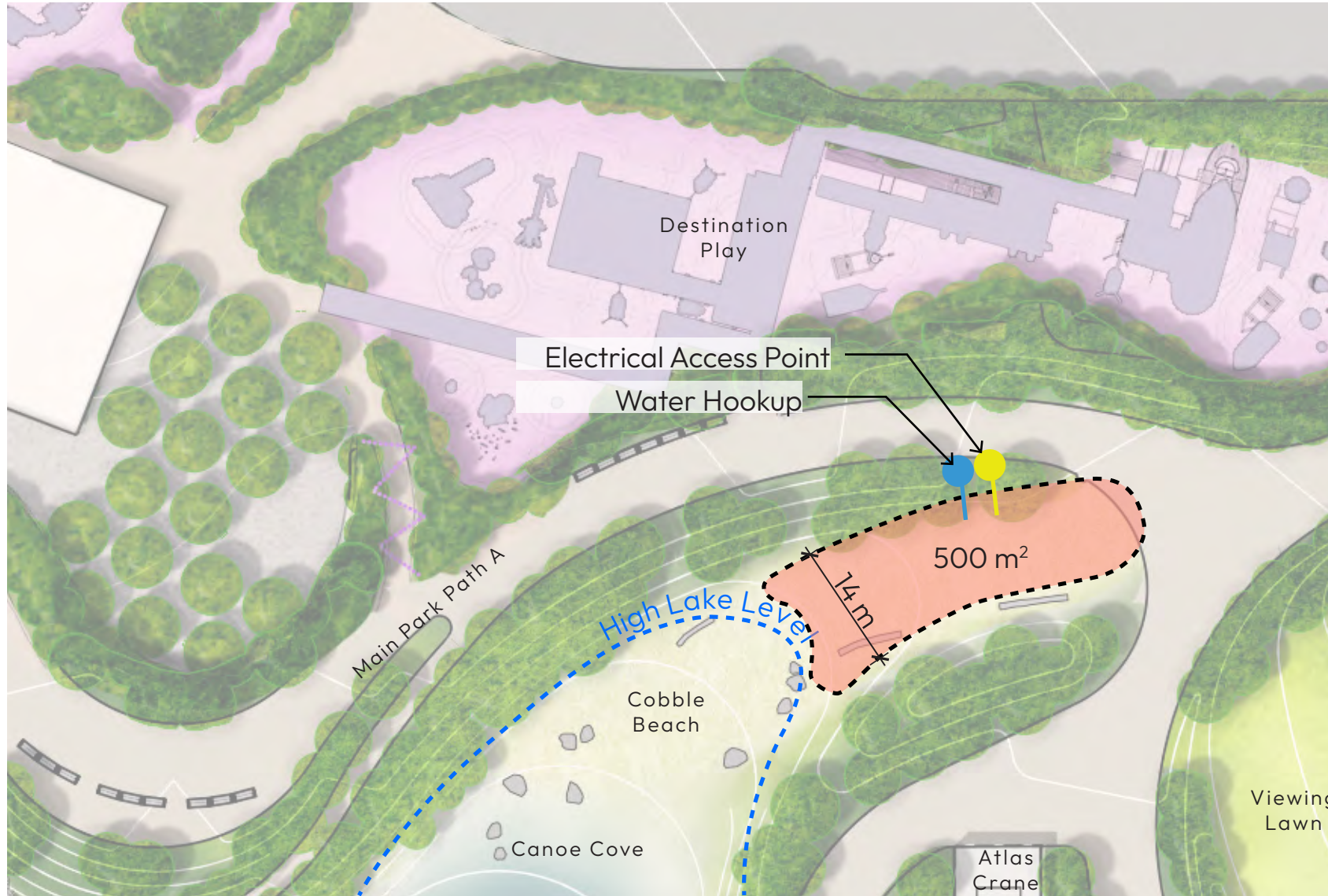
- Temporary Art
- Infrastructure: Electric (20A)
- Surface: Screened Limestone

Promontory Park South - Esplanade



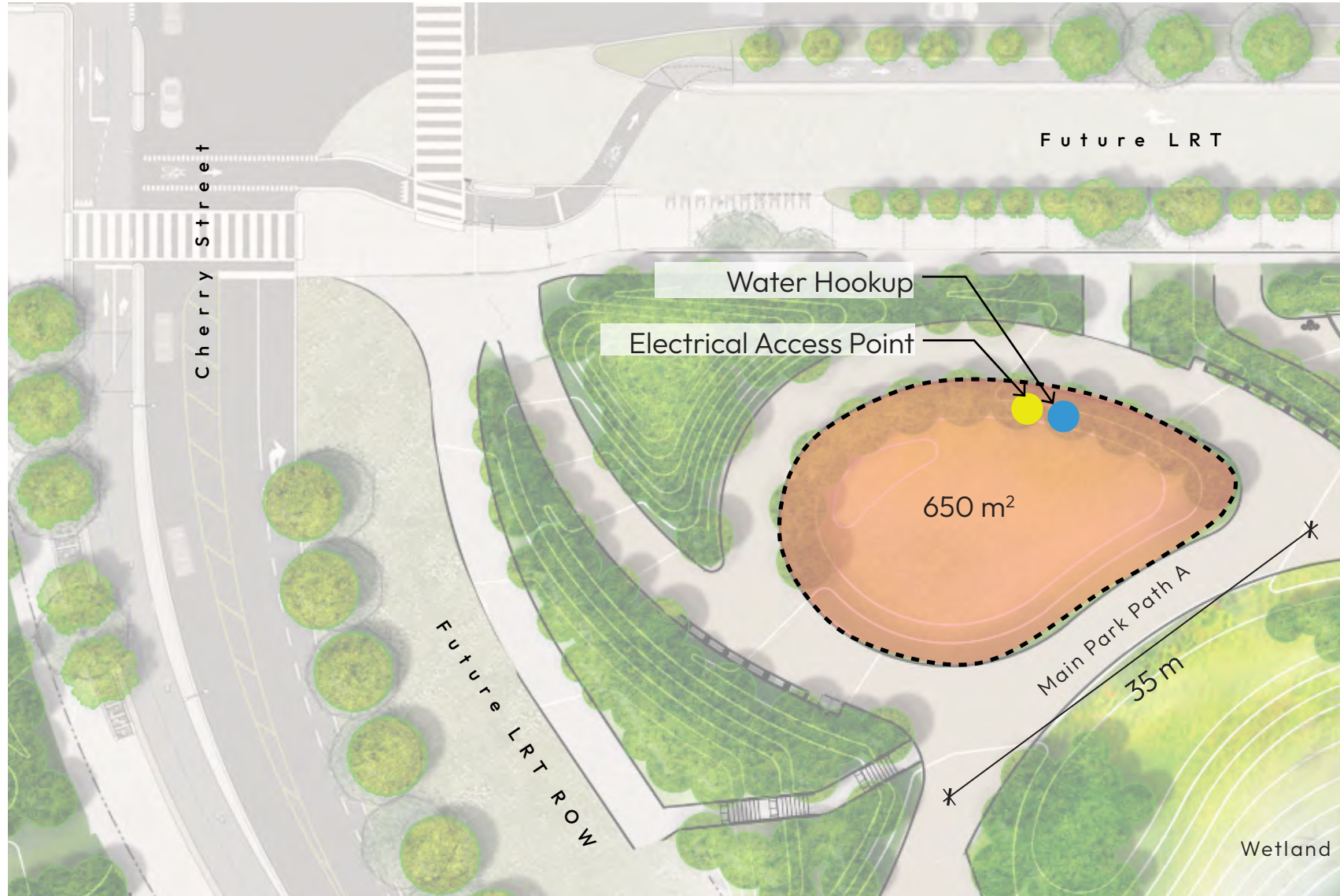
- Temporary Art
- Infrastructure: Electric (30A) and Water (Hose Bibs)
- Surface: Porous Pavement

Promontory Park South - Cobble Beach



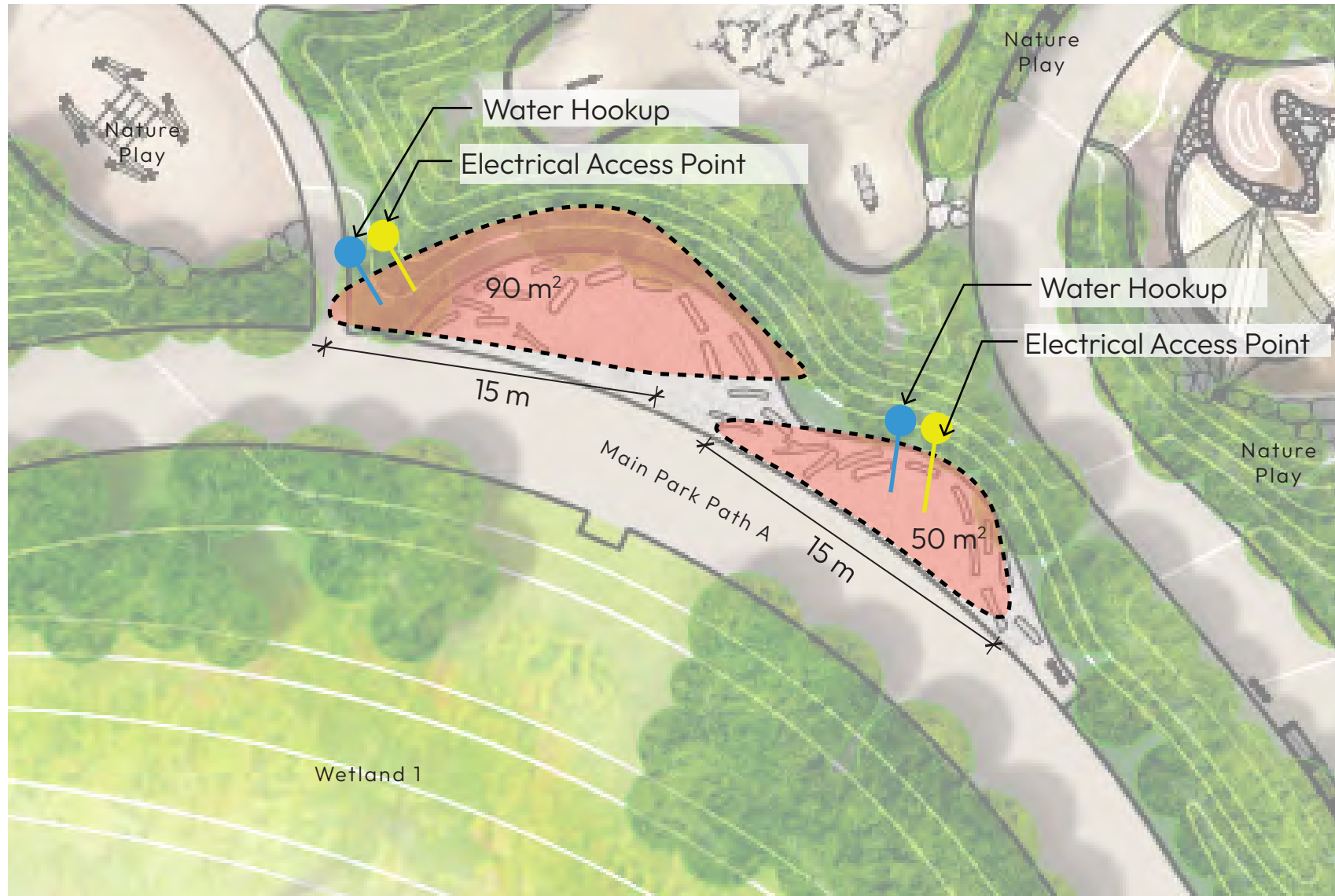
- Temporary Art
- Infrastructure: Electric (20A) and Water (Hose Bib)
- Surface: Gravel Beach

River Park North - West Viewing Lawn



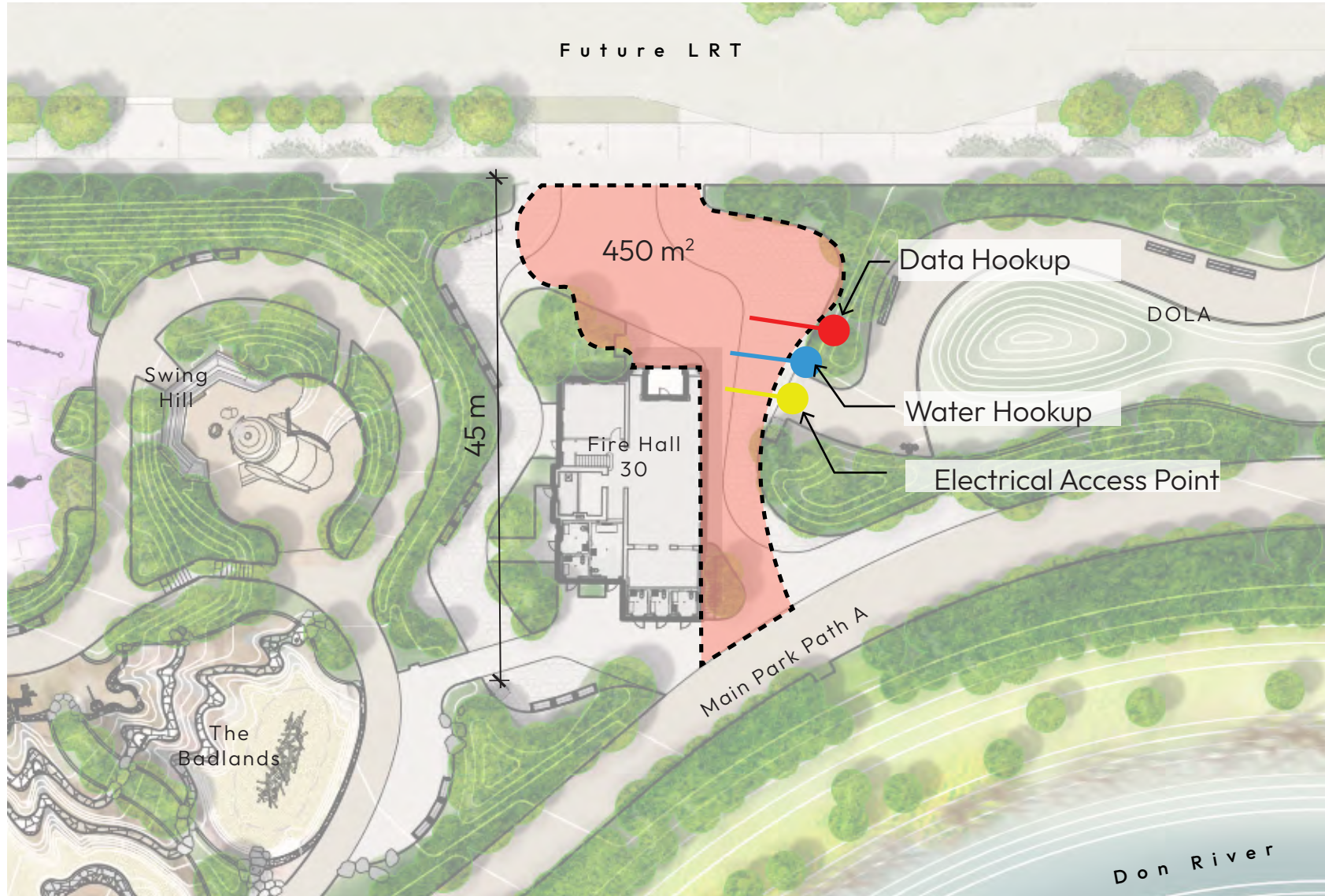
- Temporary Art
- Infrastructure: Electric (20A) and Water (Hose Bib)
- Surface: Grass

River Park North - Gathering Space A



- Temporary Art
- Infrastructure: Electric (20A) and Water (Hose Bibs)
- Surface: Screened limestone

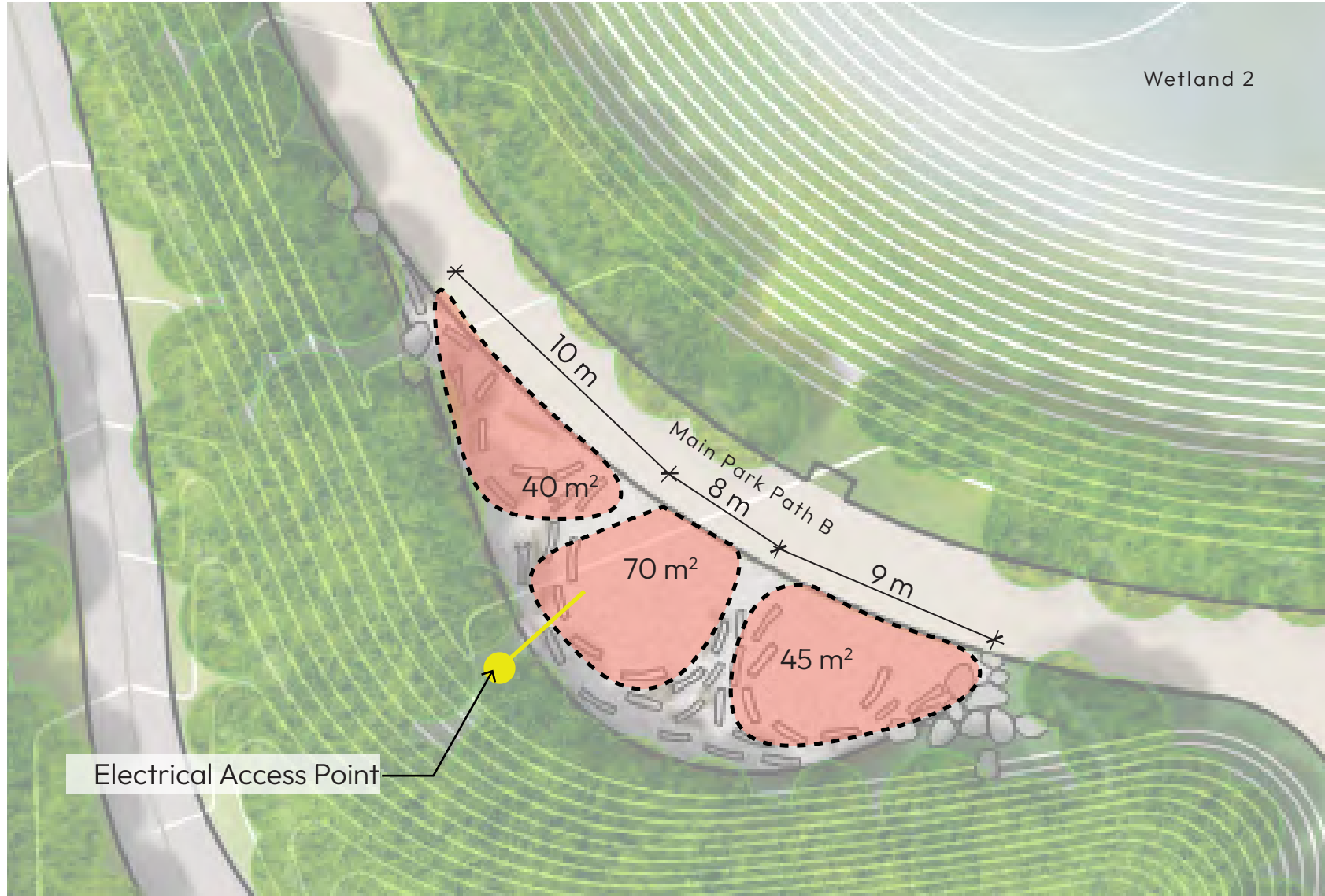
River Park North - Fire Hall 30 Plaza



- Temporary Art
- Infrastructure: Electric (20A), Water (Hose Bib) and Data
- Surface: Concrete, Unit Pavers

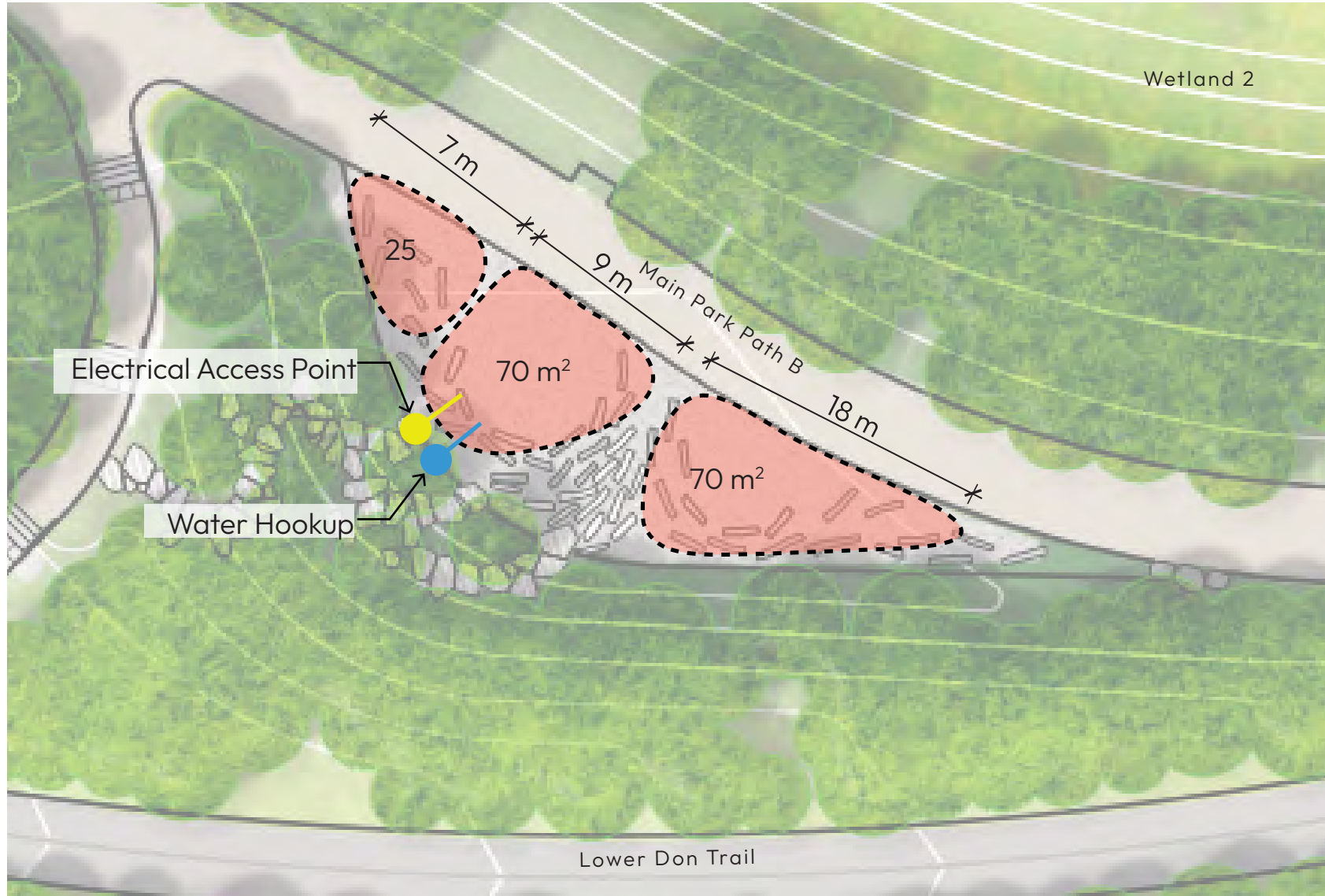


River Park South - Gathering Space B



- Temporary Art
- Infrastructure: Electric (20A)
- Surface: Screened limestone

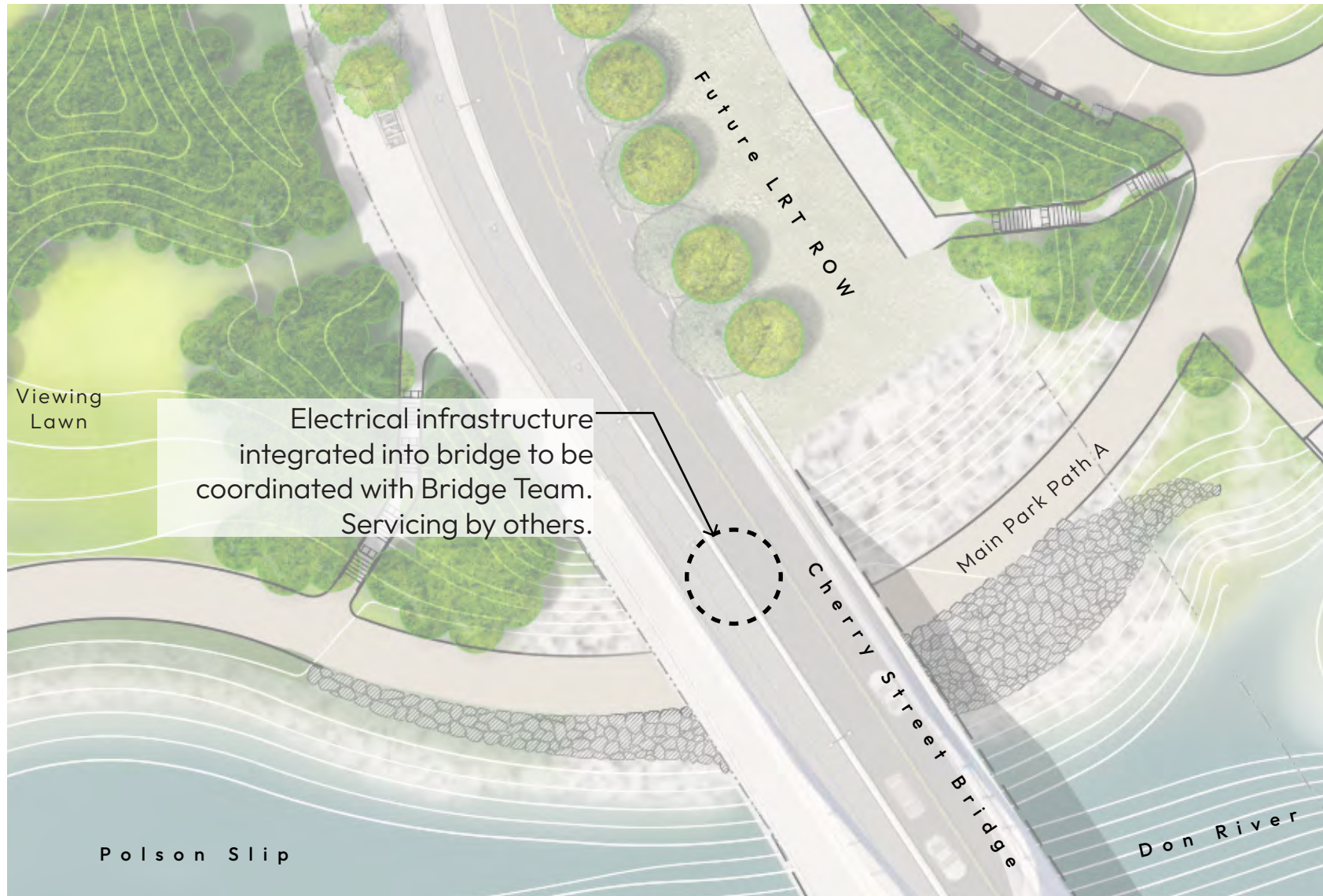
River Park South - Gathering Space C



- Temporary Art
- Infrastructure: Electric (20A) and Water (Hose Bib)
- Surface: Screened limestone

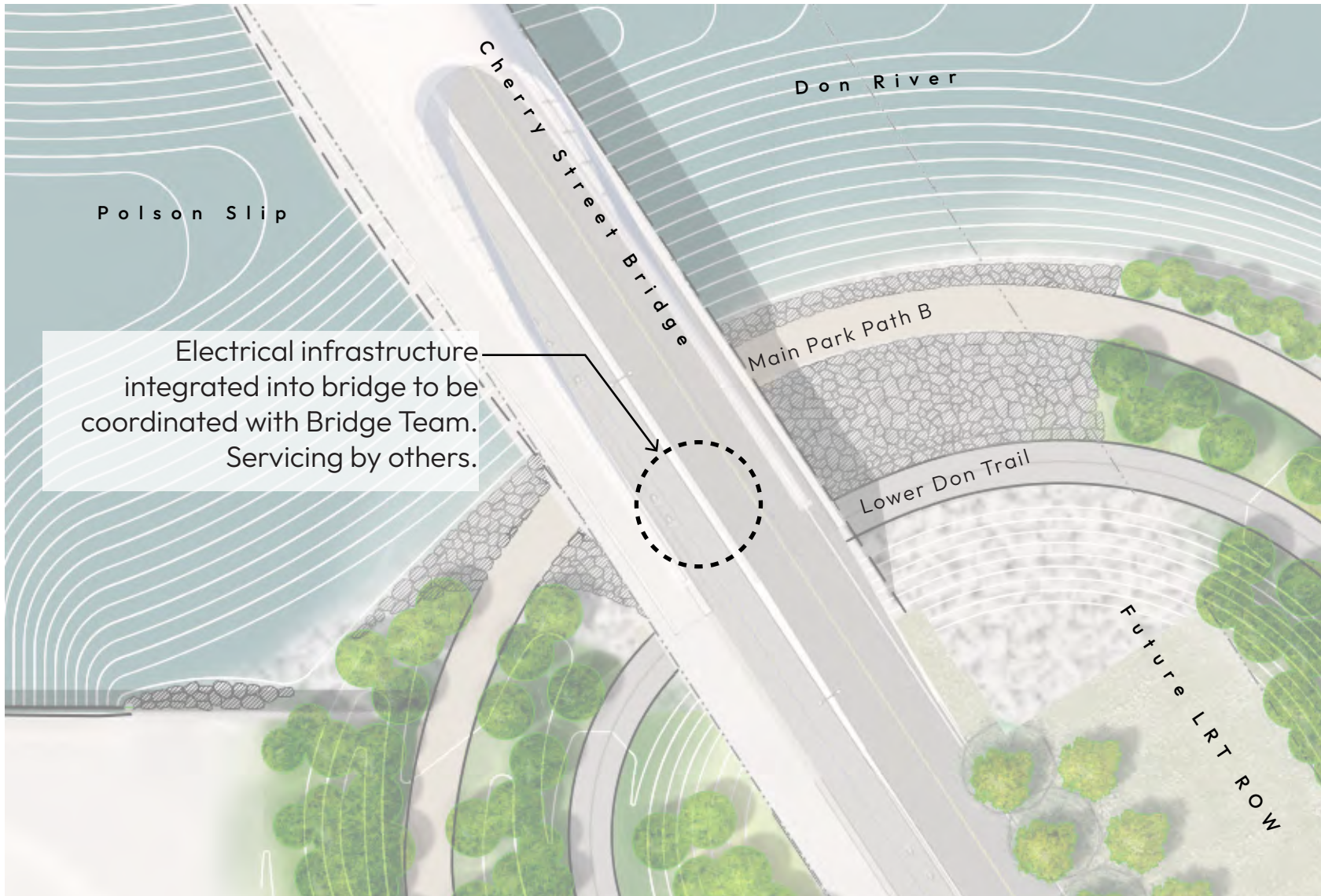


River Park North - Cherry Street Bridge North & River Fish Gates



- Temporary Art
- Infrastructure: Electric (integrated into Cherry Street bridge; coordinated with Bridge Team). Temporary Art in the floodplain will not be serviced.
- HDMI plug-in on a metal bridge.

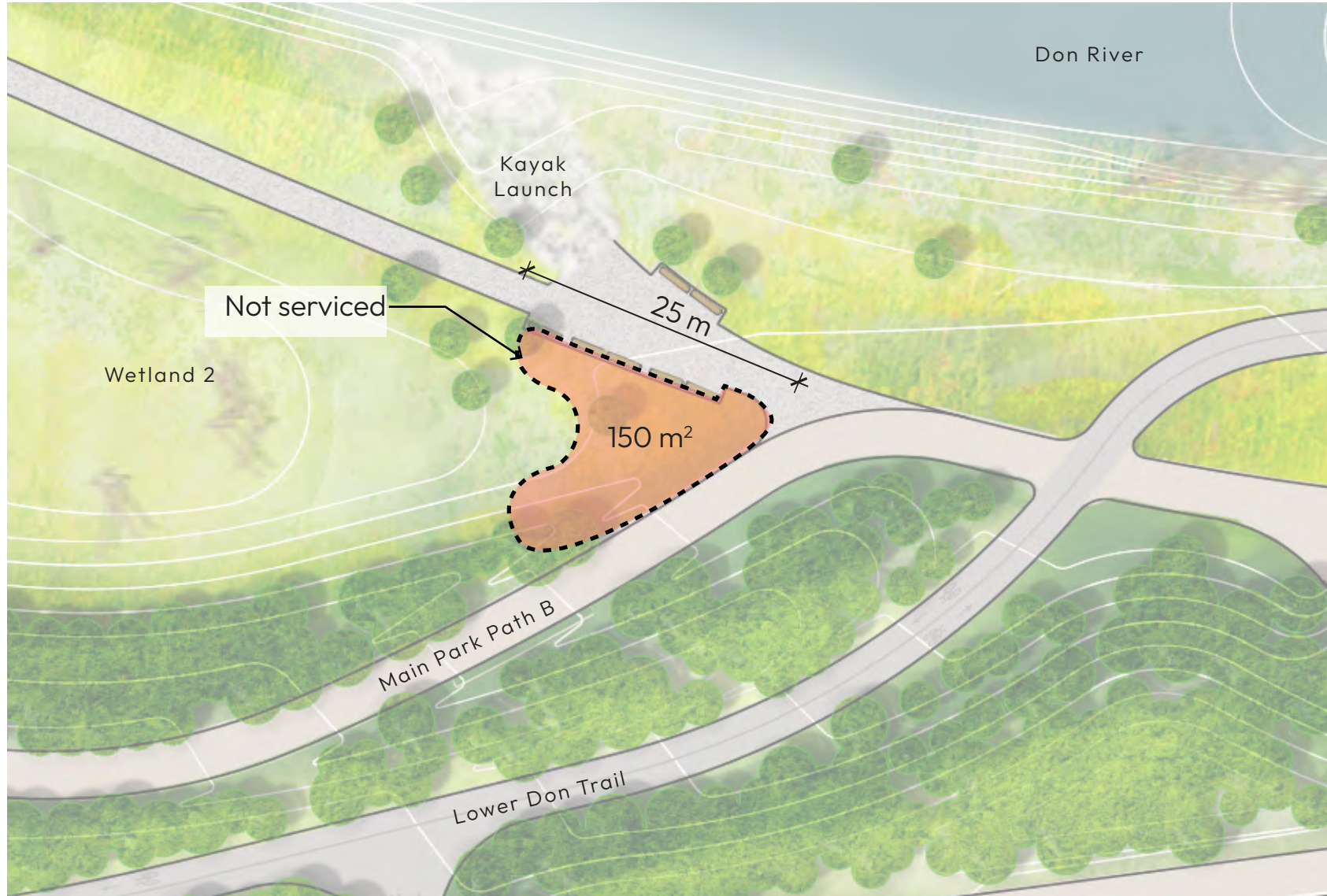
River Park South - Cherry Street Bridge South



- Temporary Art
- Infrastructure: Electric (integrated into Cherry Street bridge; coordinated with Bridge Team).
- HDMI plug-in on a metal bridge.

Temporary Art – without Servicing

River Park South - Wetland 2



- Temporary Art
- Infrastructure: Temporary Art in the floodplain will not be serviced.
- Surface: Plant bed

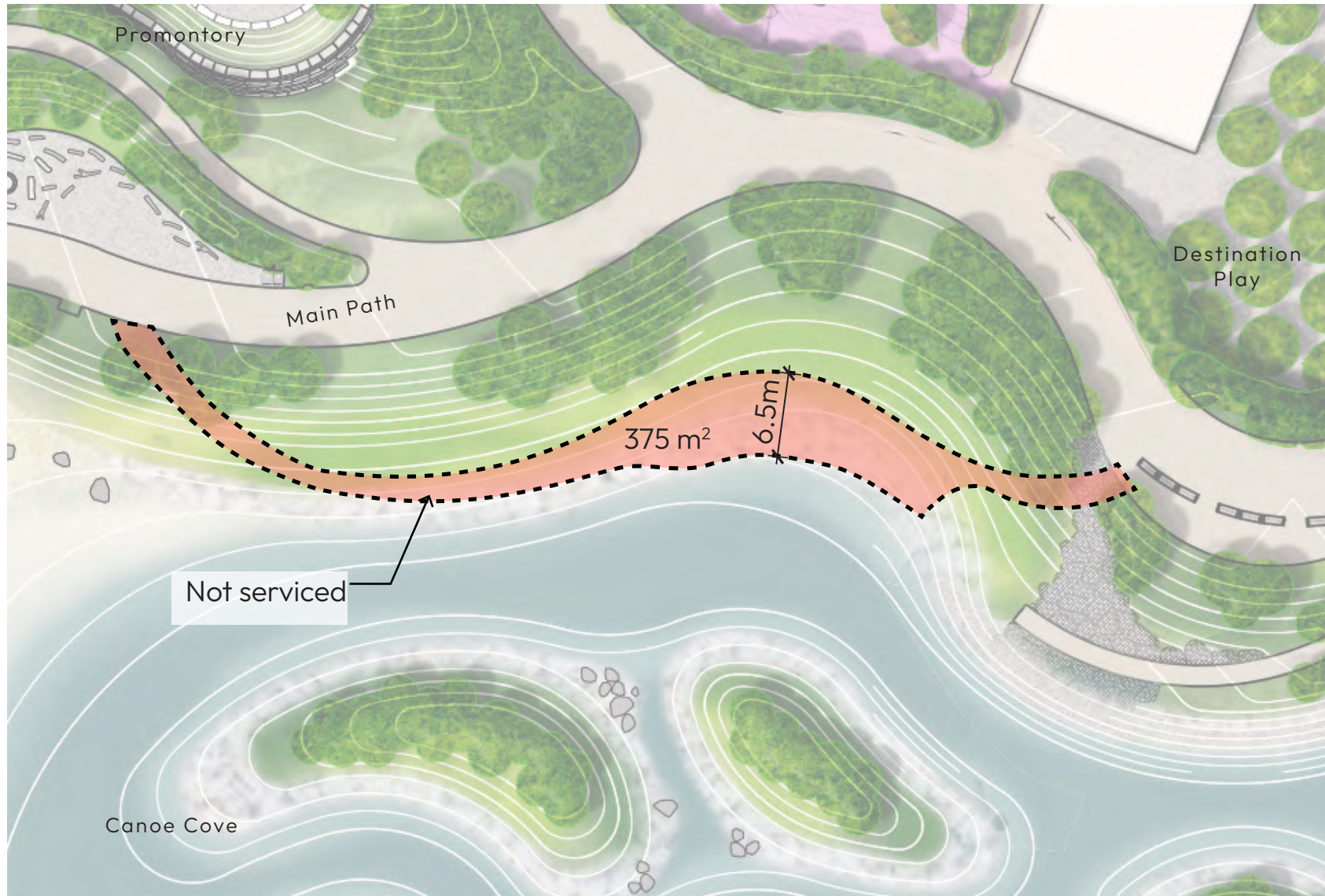


River Valley - River Get-Down



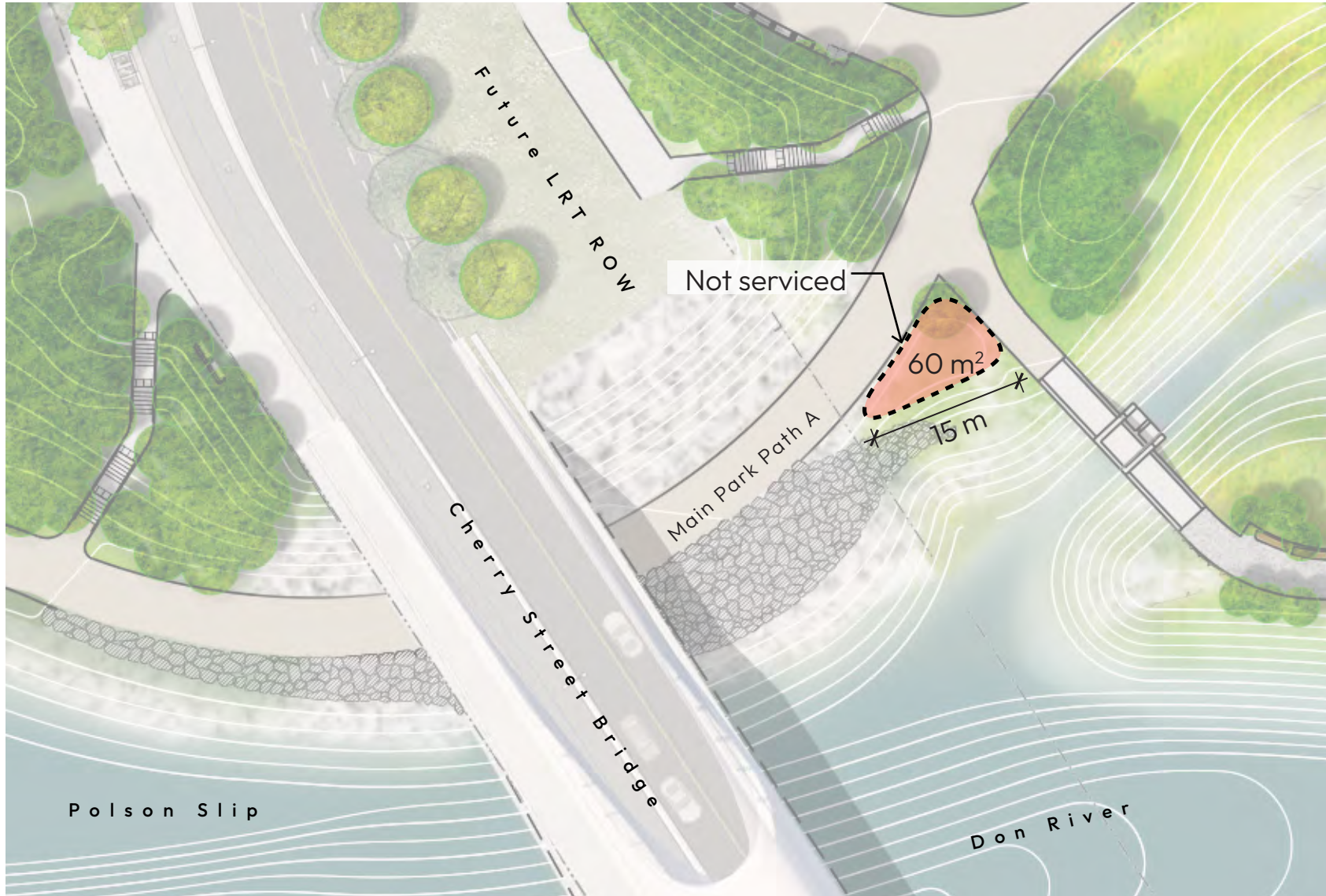
- Temporary Art
- Infrastructure: Temporary Art in the floodplain will not be serviced.
- Surface: Armour Stone

Canoe Cove



- Temporary Art
- Infrastructure: Temporary Art in the floodplain will not be serviced.
- Surface: Stone

Fish Gates



- Temporary Art
- Infrastructure: Temporary Art in the floodplain will not be serviced.
- Surface: Vegetation