

06 193 723 ESC 9458

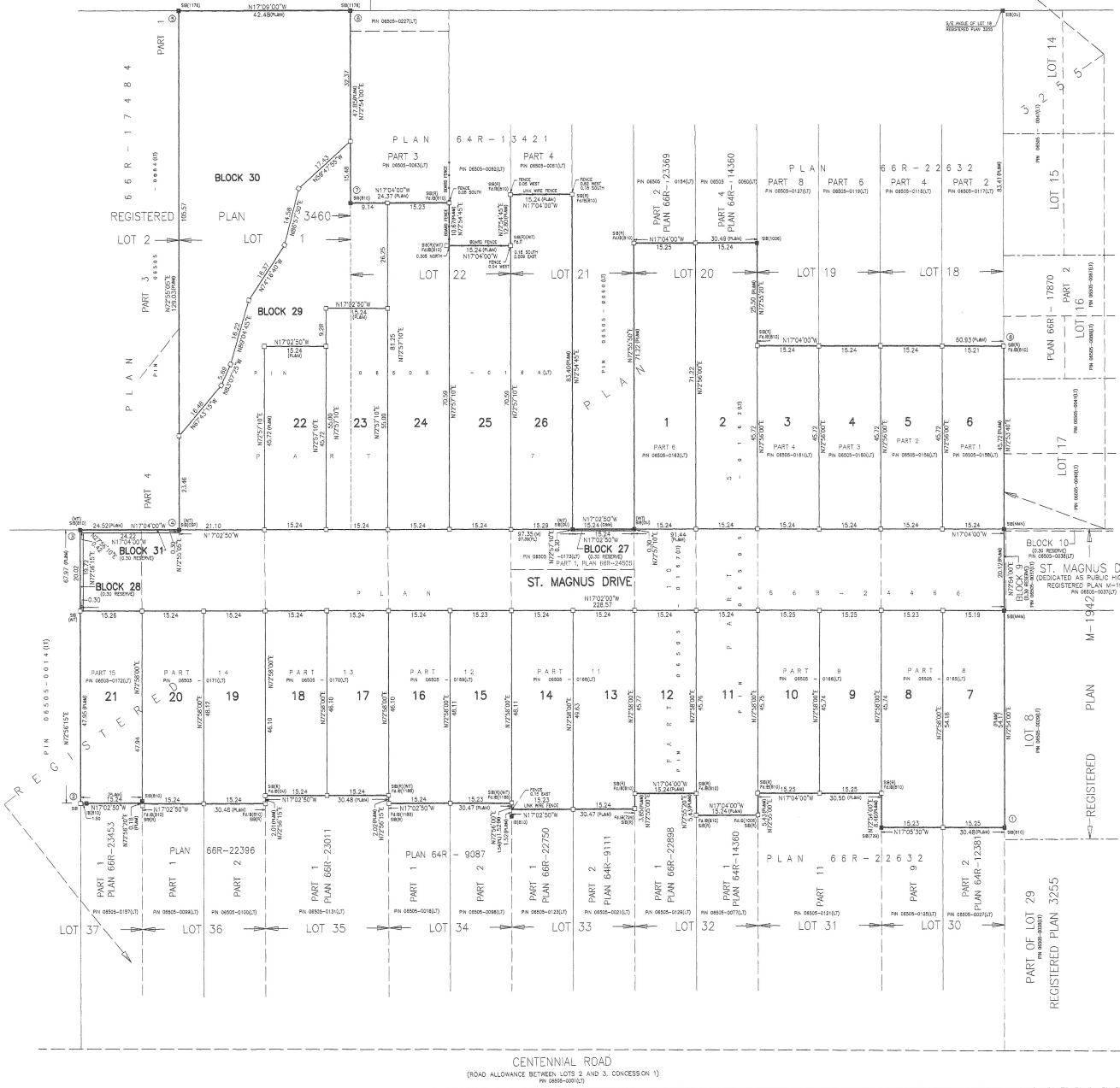
PE 297-M

PLAN 66M - 2482

BRUMWELL STREET
(BY REGISTERED PLAN 3460)

BRUMWELL STREET
(DEDICATED AS PUBLIC HIGHWAY BY REGISTERED PLAN 3255)

PIN 0 6 5 0 5 - 0 2 2 7 (LT)



I CERTIFY THAT THIS PLAN IS REGISTERED IN THE LAND REGISTRY OFFICE FOR THE LAND TITLES DIVISION OF THE TORONTO REGISTRY OFFICE (NO.66) AT 1:50 P.M. ON THE 12th DAY OF MAY 2010 AND ENTERED IN THE REGISTER FOR PROPERTY IDENTIFIER 06505-0227 AND THE REQUIRED CONSENTS ARE REGISTERED AS PLAN DOCUMENT NO. 2482M.

Chris Jones
ASST. DEPUTY LAND REGISTRAR

THIS PLAN COMPRISES OF ALL OF PINS 06505-0158(LT), 06505-0159(LT), 06505-0160(LT), 06505-0161(LT), 06505-0162(LT), 06505-0163(LT), 06505-0164(LT), 06505-0165(LT), 06505-0166(LT), 06505-0167(LT), 06505-0168(LT), 06505-0169(LT), 06505-0170(LT), 06505-0171(LT), 06505-0172(LT) AND 06505-0173(LT).

PLAN OF SUBDIVISION OF PART OF LOTS 18 TO 22 AND 30 TO 37 ALL INCLUSIVE REGISTERED PLAN 3255 AND LOT 1 REGISTERED PLAN 3460 CITY OF TORONTO (FORMERLY CITY OF SCARBOROUGH) SCALE 1:500 P. SALNA CO. LTD., O.L.S.

METRIC DISTANCES SHOWN ON THIS PLAN ARE IN METRES AND CAN BE CONVERTED TO FEET BY DIVIDING BY 0.3048.

- LEGEND
- DENOTES SURVEY MONUMENT PLANTED
 - DENOTES SURVEY MONUMENT FOUND
 - DENOTES STANDARD IRON BAR
 - DENOTES IRON BAR
 - DENOTES MEASURED
 - DENOTES WITNESSES
 - DENOTES JOHN W. MCKENNON
 - DENOTES PLAN 66R-2446R
 - DENOTES DOUGLAS HILL BLOCK, O.L.S.
 - DENOTES HENRY B.W. O.L.S.
 - DENOTES DONALD ESTHER ROBERTS, O.L.S.
 - DENOTES ROBERT JAMES CLARKE, O.L.S.
 - DENOTES CHRISTOPHER ANTHONY SECTION, O.L.S.
 - DENOTES WINTERS, MALCOLM & GLENDA, O.L.S.
 - DENOTES ANTHONY MACRUM MONAGHAN, O.L.S.
 - DENOTES CITY OF SCARBOROUGH-LEGAL SURVEYS SECTION
 - DENOTES FOUND
 - (X) DENOTES REPAIRED

NOTE: SURVEY MONUMENTS PLANTED ARE IRON BARS UNLESS OTHERWISE SHOWN. 0.30 RESERVES WIDTH ARE EXAGGERATED FOR CLARITY.

OWNER'S CERTIFICATE
ALL OF PINS 06505-0158(LT), 06505-0159(LT), 06505-0160(LT), 06505-0161(LT), 06505-0162(LT), 06505-0163(LT), 06505-0164(LT), 06505-0165(LT), 06505-0166(LT), 06505-0167(LT), 06505-0168(LT), 06505-0169(LT), 06505-0170(LT), 06505-0171(LT) AND 06505-0173(LT).

- THIS IS TO CERTIFY THAT:
- LOTS 1 TO 26 BOTH INCLUSIVE, BLOCKS 29 AND 30, PART OF THE STREET NAMED ST. MAGNUS DRIVE AND 0.30 RESERVE NAMED BLOCKS 28 AND 31 HAVE BEEN Laid OUT IN ACCORDANCE WITH OUR INSTRUCTIONS.
 - THE STREET IS HEREBY DEDICATED AS PUBLIC HIGHWAY TO THE CITY OF TORONTO.

DATED THE 12th DAY OF MAY 2010
CHIAVATTI DEVELOPMENTS LIMITED
Enzo Chiavatti VICE PRESIDENT
Marcello Chiavatti SECRETARY
WE HAVE THE AUTHORITY TO BIND THE CORPORATION

OWNER'S CERTIFICATE
ALL OF PIN 06505-0173(LT)
THIS IS TO CERTIFY THAT:
1. PART OF THE STREET NAMED ST. MAGNUS DRIVE AND BLOCK 27 (0.30 RESERVE) LYING WITHIN THE LIMITS OF PART 1, PLAN 66R-2455R HAVE BEEN Laid OUT IN ACCORDANCE WITH OUR INSTRUCTIONS.
2. THE STREET IS HEREBY DEDICATED AS PUBLIC HIGHWAY.

DATED THE 12th DAY OF MAY 2010
CITY OF TORONTO
John L. Cavanagh
CASUAL DIRECTOR
I HAVE THE AUTHORITY TO BIND THE CORPORATION

SURVEYOR'S CERTIFICATE
I CERTIFY THAT:
1. THIS SURVEY AND PLAN ARE CORRECT AND IN ACCORDANCE WITH THE SURVEY ACT, THE SURVEYORS ACT AND THE LAND TITLES ACT AND THE REGULATIONS MADE UNDER THESE ACTS.
2. THE SURVEY WAS COMPLETED ON THE 20th DAY OF JANUARY, 2010.
DATE: MAY 12, 2010
S.N. RAMSARODU
ONTARIO LAND SURVEYOR

P. SALNA COMPANY LTD.
ONTARIO LAND SURVEYORS
10225 YONGE STREET
RICHMOND HILL, ONTARIO L4C 3B2
PHONE (905) 884-3988 FAX (905) 737-5156
JOB NO. 08-145H
FILE NO. 08-145H
CAD FILE: EMBAD050-PLAN-2
DRAWN BY: NATHAN
CHECKED BY: SUPER/SUR
18-08-2010-PLAN-2-010 18-08-2010 04:58:56 PM 107

BEARING NOTE
BEARINGS HEREON ARE GRID BEARINGS AND ARE DERIVED FROM THE HORIZONTAL CONTROL MONUMENTS AS LISTED IN THE FOLLOWING TABLE:

MONUMENT	EASTING	NORTHING
02083225R	333 037.936	4 849 846.093
02083224R	332 963.869	4 850 271.499

AND ARE REFERRED TO ZONE 10, CENTRAL MERIDIAN 79°32' WEST LONGITUDE ONTARIO COORDINATE SYSTEM, NAD 27 (1974 ADJUSTMENT)

DISTANCES SHOWN ON THIS PLAN ARE ADJUSTED GRID DISTANCES AND CAN BE USED TO COMPUTE GRID DISTANCES BY MULTIPLYING BY THE CORRECTION FACTOR OF 0.999893.

LIST OF COORDINATES

No.	NORTHING	EASTING
1	4 849 853.32	332 926.96
2	4 849 873.72	332 867.94
3	4 849 893.67	332 832.92
4	4 849 870.23	332 840.12
5	4 849 828.13	333 063.45
6	4 849 867.54	333 075.98
7	4 849 853.47	333 030.24
8	4 849 888.61	333 043.68

APPROVED BY CITY OF TORONTO UNDER SECTION 51 OF THE PLANNING ACT, THIS 12th DAY OF MAY, 2010

Allen Appleby
CHIEF PLANNER & EXECUTIVE DIRECTOR
CITY PLANNING DIVISION
CITY OF TORONTO