

## **Traffic Calming (Speed Humps) - Farmcrest Drive**

**Date:** November 20, 2024

**To:** Scarborough Community Council

**From:** Director, Traffic Management, Transportation Services

**Wards:** Ward 22, Scarborough-Agincourt

### **SUMMARY**

---

This staff report is about a matter that Community Council has delegated authority from City Council to make a final decision.

Transportation Services is recommending the installation of speed humps on Farmcrest Drive, between Pharmacy Avenue and Meadowacres Drive. Staff's assessment indicates that the criteria as set out in the updated Traffic Calming Policy has been satisfied. Therefore, speed humps should be installed on Farmcrest Drive.

### **RECOMMENDATIONS**

---

The Director, Traffic Management, Transportation Services recommends that:

1. Scarborough Community Council authorize the installation of speed humps on Farmcrest Drive, between Pharmacy Avenue and Meadowacres Drive.
2. Scarborough Community Council direct the City Solicitor to prepare a by-law to alter the roadway for the installation of five speed humps on Farmcrest Drive, between Pharmacy Avenue and Meadowacres Drive, generally as shown on Attachment 4, Drawing TC-410, dated November 2024, attached to the report entitled "Traffic Calming (Speed Humps) - Farmcrest Drive" from the Director, Traffic Management, Transportation Services.
3. Subject to approval of Recommendations 1 and 2 above, Scarborough Community Council reduce the speed limit from 40 km/h to 30 km/h on Farmcrest Drive, between Pharmacy Avenue and Victoria Park Avenue in conjunction with the installation of speed humps.

## **FINANCIAL IMPACT**

---

The estimated cost for installing five speed humps on Farmcrest Drive is \$20,000.00. Funding would be subject to availability and competing priorities within the Transportation Services 2025 Capital Budget.

## **DECISION HISTORY**

---

This report addresses a new initiative.

## **COMMENTS**

---

Transportation Services received a request from the Ward Councillor, on behalf of area residents, to investigate the feasibility of installing speed humps on Farmcrest Drive, between Pharmacy Avenue and Victoria Park Avenue. The residents are concerned that motorists travel at a high rate of speed on Farmcrest Drive.

### **Existing Conditions**

Farmcrest Drive is characterized by the following conditions:

- It is a two-lane, east-west, collector roadway
- It operates two-way traffic on a pavement width of approximately 8.5 metres
- The daily two-way traffic volume is approximately 2,200 to 3,300 vehicles
- The speed limit is 40 km/h
- Heavy trucks are prohibited at all times
- There is no Toronto Transit Commission (TTC) service provided
- There is a sidewalk provided on the north side of the street.

The adjacent land use in this area is mainly residential, consisting of detached, and semi-detached dwellings. The northeast corner of the intersection of Farmcrest Drive and Victoria Park Avenue is classified as commercial, while a park, Farmcrest Parkette, is located on the southeast corner.

A map of the area and proposed locations of the speed humps is included in Attachment 4.

### **Study Results**

As part of the assessment of the warrant criteria, a vehicle speed and volume study was conducted on Farmcrest Drive from October 19 to 21, 2021. The results of the study was evaluated against the warrant criteria for Traffic Calming as adopted by the City Council. The study results on Farmcrest Drive are summarized in Table 1.

Table 1: Farmcrest Drive Speed and Volume Study Results

Road section	Daily Traffic Volume	85th percentile speed criteria		95th percentile speed criteria	
		Results	Warrant Requirement	Results	Warrant Requirement
Pharmacy Avenue to Commons Drive	2,200	49 km/h	48 km/h	54 km/h	55 km/h
Commons Drive to Meadowacres Drive	2,600	38 km/h	48 km/h	42 km/h	55 km/h
Meadowacres Drive to Victoria Park Avenue	3,300	35 km/h	48 km/h	40 km/h	55 km/h

Based on the study results, Farmcrest Drive, between Pharmacy Avenue and Commons Drive, has satisfied the warrant criteria for both minimum block length and minimum vehicle speed. The block length was greater than 120 metres and the operating speed is 9 km/h over the warranted speed of 40 km/h.

Farmcrest Drive, between Commons Drive and Meadowacres Drive, does not meet the overall warrant for traffic calming for the following reason:

- Minimum speed: The operating speed must be a minimum of 8 km/h over the warranted speed limit. The operating speed of 38 km/h is 10 km/h under the minimum required speed of 48 km/h. The 95th percentile speed must be a minimum of 15 km/h over the warranted speed limit. The 95th percentile speed of 42 km/h is 13 km/h under the minimum required speed of 55 km/h.

Additionally, Farmcrest Drive, between Meadowacres Drive and Victoria Park Avenue, does not meet the overall warrant for traffic calming for the following reasons:

- Minimum block length: The street block length of 80 metres is less than the required minimum of 120 metres between adjacent stop controls (traffic signals or stop control sign).
- Minimum speed: The operating speed must be a minimum of 8 km/h over the warranted speed limit. The operating speed of 35 km/h is 13 km/h under the minimum required speed of 48 km/h. The 95th percentile speed must be a minimum of 15 km/h over the warranted speed limit. The 95th percentile speed of 40 km/h is 15 km/h under the minimum required speed of 55 km/h.

The overall investigation concluded that the eligibility and warrant criteria as outlined in the updated Traffic Calming Policy has only been satisfied for the section of Farmcrest Drive, between Pharmacy Avenue and Commons Drive.

Generally, when one block of a street satisfies the traffic calming warrant criteria, staff recommend the installation of speed humps over the entire length of the street to maintain consistency. However, given that Farmcrest Drive, between Meadowacres Drive and Victoria Park Avenue, does not satisfy the minimum block length requirement of 120 metres, staff recommend the installation of speed humps on Farmcrest Drive, between Pharmacy Avenue and Meadowacres Drive.

### **Relative Priority and Other Impacts**

In the event that the number of approved requests for roadway traffic calming measures exceeds the budget allocated for installation, funding for approved installations will be prioritized using a Prioritization Score. This score is made up of a Quantitative Score and a Qualitative Score.

The Quantitative Score is based on the results of the data collection, including travel speeds and traffic volumes to prioritize locations with higher vehicle speeds and volumes.

The Qualitative Score includes:

- Collision history to prioritize locations with a history of serious injury or fatal collisions and those involving a pedestrian or cyclist
- Equity to prioritize equity-deserving communities with a high-concentration of priority populations and those that are transportation disadvantaged
- Expected presence of vulnerable road users (elderly population, school children and pedestrians, including transit riders) to prioritize locations with a higher risk of fatal and serious injury collisions

The Quantitative and Qualitative Scores are averaged to provide the complete Prioritization Score. Farmcrest Drive, between Pharmacy Avenue and Meadowacres Drive, scored 27 ranking points out of a possible 100.

No alterations to parking regulations will be required, nor will the number of parking spaces be affected by the installation of speed humps. Installation of speed humps will have minimal effect on winter services, street cleaning and garbage collection.

Consultation with emergency services (Toronto Police Service, Toronto Fire Services and Toronto Paramedic Services) is required to ensure that the design and layout of a traffic calming proposal does not unduly affect their operations. Emergency services were advised of this proposal.

Toronto Fire Services responded and advised of potential delays in emergency responses but expressed support for initiatives that enhance community safety. A copy of their full response is included in Attachment 5. Toronto Paramedic Services have also provided their comments. A copy of their full response is included in Attachment 6. Toronto Police Service has not provided comments back at the time of writing this report. Installing speed humps will result in slower operating speeds for all vehicles, including emergency service vehicles.

The Ward Councillor has been advised of the recommendations in this report.

## **CONTACT**

---

Dan Clement, CET, Manager Traffic Operations (Area 1), Transportation Services  
416-397-5021, [Dan.Clement@toronto.ca](mailto:Dan.Clement@toronto.ca)

## **SIGNATURE**

---

Roger Browne, M.A.Sc., P. Eng.  
Director, Traffic Management, Transportation Services

## **ATTACHMENTS**

---

- Attachment 1: Traffic Calming Warrant - Farmcrest Drive, between Pharmacy Avenue and Commons Drive
- Attachment 2: Traffic Calming Warrant - Farmcrest Drive, between Commons Drive and Meadowacres Drive
- Attachment 3: Traffic Calming Warrant - Farmcrest Drive, between Meadowacres Drive and Victoria Park Avenue
- Attachment 4: Speed Hump Locations Plan - Farmcrest Drive, Meadowacres Drive - Pharmacy Avenue
- Attachment 5: Letter from Toronto Fire Services, dated November 5, 2024
- Attachment 6: Letter from Toronto Paramedic Services, dated October 29, 2024

Attachment 1: Traffic Calming Warrant - Farmcrest Drive, between Pharmacy Avenue and Commons Drive

Criteria		Requirement	Warrant Satisfied?
Community Support		A direct request from the Ward Councillor OR identified by Transportation Services in consultation with the Ward Councillor	Yes
Eligibility Criteria	Road Classification	Classified as a local or collector roadway, according to the Toronto Road Classification System	Yes
	Sidewalks	Presence of a sidewalk on at least one side of a local roadway and both sides of a collector roadway is preferred but not required	Yes
	Traffic Volume	Maximum average daily traffic volume of less than 8,000 vehicles per day	Yes
	Road Grade	Maximum roadway grade of up to 5%, can be considered in locations where the road grade is between 5% and 8% with additional review	Yes
	Emergency Services	No significant impacts on emergency services, including Toronto Fire, Paramedic and Police Services	Yes
	Transit Services	No significant impacts to regularly scheduled Toronto Transit Commission (TTC) services	N/A
Warrant Criteria	Minimum Block Length	Minimum block length of 120 metres based on the measured distance from centre to centre of controlled intersections AND	Yes (190 m)
	85th percentile speed	Minimum 85th percentile speed of 8 km/h over the warranted speed limit OR	Yes (49 km/h)
	95th percentile speed	Minimum 95th percentile speed of 15 km/h over the warranted speed limit	No (54 km/h)

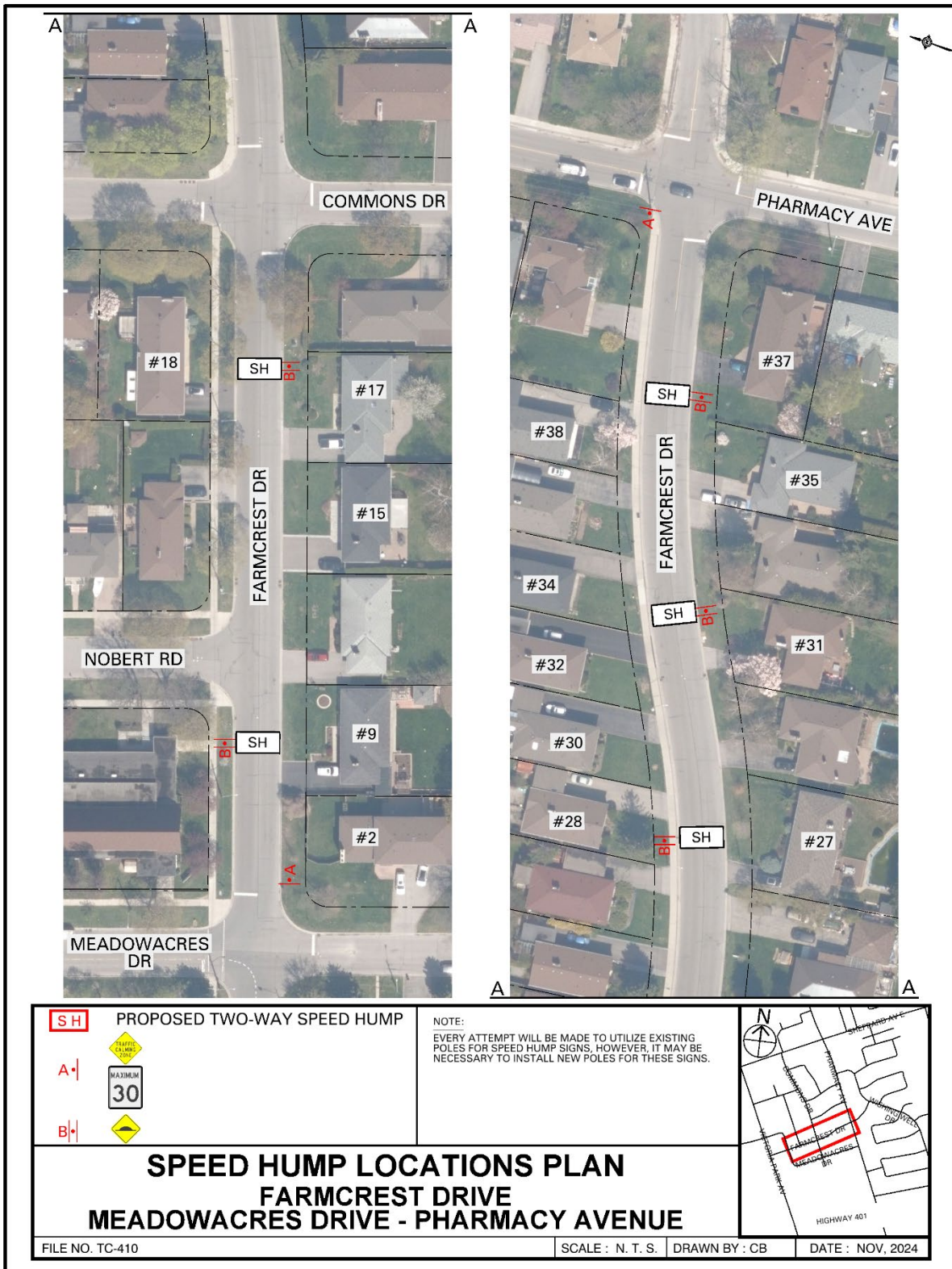
Attachment 2: Traffic Calming Warrant - Farmcrest Drive, between Commons Drive and Meadowacres Drive

Criteria		Requirement	Warrant Satisfied?
Community Support		A direct request from the Ward Councillor OR identified by Transportation Services in consultation with the Ward Councillor	Yes
Eligibility Criteria	Road Classification	Classified as a local or collector roadway, according to the Toronto Road Classification System	Yes
	Sidewalks	Presence of a sidewalk on at least one side of a local roadway and both sides of a collector roadway is preferred but not required	Yes
	Traffic Volume	Maximum average daily traffic volume of less than 8,000 vehicles per day	Yes
	Road Grade	Maximum roadway grade of up to 5%, can be considered in locations where the road grade is between 5% and 8% with additional review	Yes
	Emergency Services	No significant impacts on emergency services, including Toronto Fire, Paramedic and Police Services	Yes
	Transit Services	No significant impacts to regularly scheduled Toronto Transit Commission (TTC) services	N/A
Warrant Criteria	Minimum Block Length	Minimum block length of 120 metres based on the measured distance from centre to centre of controlled intersections AND	Yes (140 m)
	85th percentile speed	Minimum 85th percentile speed of 8 km/h over the warranted speed limit OR	No (38 km/h)
	95th percentile speed	Minimum 95th percentile speed of 15 km/h over the warranted speed limit	No (42 km/h)

Attachment 3: Traffic Calming Warrant - Farmcrest Drive, between Meadowacres Drive and Victoria Park Avenue.

Criteria		Requirement	Warrant Satisfied?
Community Support		A direct request from the Ward Councillor OR identified by Transportation Services in consultation with the Ward Councillor	Yes
Eligibility Criteria	Road Classification	Classified as a local or collector roadway, according to the Toronto Road Classification System	Yes
	Sidewalks	Presence of a sidewalk on at least one side of a local roadway and both sides of a collector roadway is preferred but not required	Yes
	Traffic Volume	Maximum average daily traffic volume of less than 8,000 vehicles per day	Yes
	Road Grade	Maximum roadway grade of up to 5%, can be considered in locations where the road grade is between 5% and 8% with additional review	Yes
	Emergency Services	No significant impacts on emergency services, including Toronto Fire, Paramedic and Police Services	Yes
	Transit Services	No significant impacts to regularly scheduled Toronto Transit Commission (TTC) services	N/A
Warrant Criteria	Minimum Block Length	Minimum block length of 120 metres based on the measured distance from centre to centre of controlled intersections AND	No (80 m)
	85th percentile speed	Minimum 85th percentile speed of 8 km/h over the warranted speed limit OR	No (35 km/h)
	95th percentile speed	Minimum 95th percentile speed of 15 km/h over the warranted speed limit	No (40 km/h)

Attachment 4: Speed Hump Locations Plan - Farmcrest Drive, Meadowacres Drive - Pharmacy Avenue



Attachment 5: Letter from Toronto Fire Services, dated November 5, 2024



Matthew Pegg  
Fire Chief and General Manager

Paul Raftis  
Deputy City Manager  
Community & Social Services

Fire Services  
4330 Dufferin Street  
Toronto, Ontario M3H 5R9

Email: [OfficeoftheFireChief@toronto.ca](mailto:OfficeoftheFireChief@toronto.ca)

November 5, 2024

**Ghamdan Al-Mukardi**  
Engineering Technologist Technician  
Traffic Operations - Scarborough District  
City of Toronto - Transportation Services

**RE: Farmcrest Drive, between Pharmacy Avenue and Meadowacres Drive.  
Speed Hump Investigative Summary**

We are in receipt of and have reviewed the proposal for installation of traffic calming measures (speed humps) on Farmcrest Drive, between Pharmacy Avenue and Meadowacres Drive. and provide the following comments.

Toronto Fire Services does not support this proposed speed hump installation as it may negatively impact service delivery. The physical restrictions imposed by speed humps have a greater impact on fire vehicles. Response time increases with every obstacle encountered responding to any emergency incident and the cumulative impact of several speed humps can increase responses times.

Toronto Fire Services is supportive of initiatives that improve safety for all citizens of and visitors to the City of Toronto. However, careful consideration must be given to accepting a delay to emergency response vehicles as a compromise to combat the risks presented by all vehicular traffic. Our recommendation is that non-physical measures be considered and evaluated to determine if desired results can be obtained without imposing a physical obstacle to emergency vehicles.

Regards,

Claudio Gloazzo  
Acting District Chief  
Emergency Planning  
Toronto Fire Services  
City of Toronto  
O-416-338-7708  
C-416-688-0114



Attachment 6: Letter from Toronto Paramedic Services, dated October 29, 2024

**From:** [EMS Planning](#)  
**To:** [Ghamdan Al-mukardi](#)  
**Cc:** [Atif Sharif](#); [Jennifer Chung](#); [EMS Planning](#); [EMS Planning](#)  
**Subject:** Speed Humps\_ Farmcrest Drive  
**Date:** October 29, 2024 10:39:03 AM

---

*We have received and reviewed the proposal for installation of speed humps on Farmcrest Drive, between Pharmacy Avenue and Victoria Park Avenue, with the following comments:*

*The installation of speed humps on Farmcrest Drive, between Pharmacy Avenue and Victoria Park Avenue, will impact response and transport times for residents that reside on the roadway speed humps are installed. Impacts may extend to community members if Farmcrest Drive, between Pharmacy Avenue and Victoria Park Avenue, serves access to other roadways. It is important that the applicant understands that the installation of traffic calming devices will reduce the speed that emergency vehicles travel when responding to emergencies on roadways where they are installed.*

*Toronto Paramedic Services is supportive of community initiatives that improve the safety of all citizens of, and visitors to, the City of Toronto. Traffic and pedestrian safety are key components of a healthy neighbourhood, and we endeavour to support the wishes of the community to implement measures to improve upon these components.*