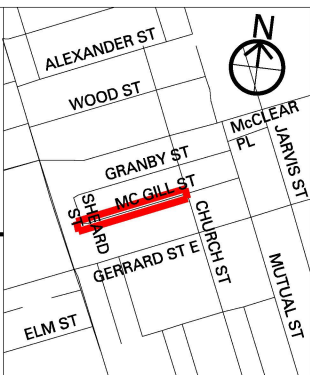


SH	PROPOSED SPEED HUMP
A	
B	

NOTE:
 EVERY ATTEMPT WILL BE MADE TO UTILIZE EXISTING POLES FOR SPEED HUMP SIGNS, HOWEVER, IT MAY BE NECESSARY TO INSTALL NEW POLES FOR THESE SIGNS.



SPEED HUMP LOCATIONS PLAN

McGILL STREET SHEARD STREET - CHURCH STREET