

Metrolinx Ontario Line– Temporary Traffic and Parking By-law Amendments on Strange Street

Date: November 18, 2024

To: Toronto and East York Community Council

From: Deputy General Manager, Transportation Services

Wards: Ward 14, Toronto-Danforth

SUMMARY

This report requests Toronto and East York Community Council approval for temporary traffic by-law changes on Strange Street to address the impacts of the temporary closure of a surface parking lot used by Fontbonne Ministries. The surface parking lot will be temporarily closed to accommodate an access road from Queen Street East to the rail corridor where the Ontario Line related works will take place.

To address parking needs of Fontbonne Ministries during construction, two accessible parking spaces and additional on-street parking spaces will be designated on the west side of Strange Street. Furthermore, a temporary parking facility at 356 Eastern Avenue will be provided to meet the parking needs of Fontbonne Ministries' staff, residents, and visitors.

RECOMMENDATIONS

The Deputy General Manager, Transportation Services, recommends that:

1. Toronto and East York Community Council rescind the existing permit parking regulation in effect from 12.01 a.m. to 7:00 a.m., daily on the odd (east) side of Strange Street, between Queen Street East and the south end of Strange Street, from November 15, 2024, to December 31, 2026, inclusive.
2. Toronto and East York Community Council prohibit stopping at all times on the east side of Strange Street, between Queen Street East and the south end of Strange Street, from November 15, 2024, to December 31, 2026, inclusive.
3. Toronto and East York Community Council amend the existing parking prohibition in effect at all times on the west side of Strange Street between Queen Street East and the south end of Strange Street, to be in effect between Queen Street East and a point 23 metres south, from November 15, 2024, to December 31, 2026, inclusive.

4. Toronto and East York Community Council designate on-street accessible parking spaces on the west side of Strange Street, between a point 23 metres south of Queen Street East and a point 12 metres further south, from November 15, 2024, to December 31, 2026, inclusive.

5. Toronto and East York Community Council authorize the appropriate City officials to submit directly to the Council at the appropriate time any necessary bills to amend the appropriate City of Toronto Municipal Code Chapters, and any Schedules to the Chapters, to reinstate the traffic and parking regulations to what they were implemented prior to the by-law amendments.

FINANCIAL IMPACT

For Ontario Line Lakeshore East Joint Corridor works, there is no financial impact to the City. Metrolinx and the Project Co. are responsible for all costs, including payment of fees to the City for occupancy of the road right-of-way.

DECISION HISTORY

Toronto and East York Community Council at its meeting on April 21, 2022, received Item 2022.TE32.24 titled “Ontario Line Joint Corridor - Early Works Construction and Right-of-Way Permits” for information. The staff report under Item 2022.TE.32.24 provided an overview of Metrolinx’s construction proposal for Early Works in the Lakeshore East Joint Corridor, discussed its construction impacts and mitigation measures and City’s permit process for works within the road right-of-way.

<http://app.toronto.ca/tmmis/viewAgendaItemHistory.do?item=2022.TE32.24>

City Council at its meeting June 15, 2022, adopted with amendments, Item 2022.EX.33.1 titled “Metrolinx Transit Expansion Projects – Second Quarter 2022” and approved temporary lane closures required for the Ontario Line construction in the Lakeshore East Joint Corridor.

<https://secure.toronto.ca/council/agenda-item.do?item=2022.EX33.1>

COMMENTS

Metrolinx is currently reconstructing the existing GO rail bridge on Queen Street East to support the realignment of GO rail tracks and the integration of Ontario Line infrastructure. This work includes multiple construction stages, as outlined in the staff report EX33.1, which was approved by City Council in June 2022.

To enable the works within the rail corridor, Metrolinx plans to construct a temporary access road through a surface parking lot located at the south-east corner of the intersection of Queen Street East and Strange Street. This surface parking lot, which

accommodates 10 general-purpose and 2 accessible parking spaces, is currently used by Fontbonne Ministries, located at 797 Queen Street East, immediately west of Strange Street.

The temporary access road will provide the required vehicular connection between Queen Street East and the rail corridor. The construction and subsequent use of this temporary access road will result in the temporary closure of the parking lot from November 15, 2024, to December 31, 2026, inclusive. Figure 1 shows the location of the temporary access road with respect to the parking lot and the Fontbonne Ministries building.

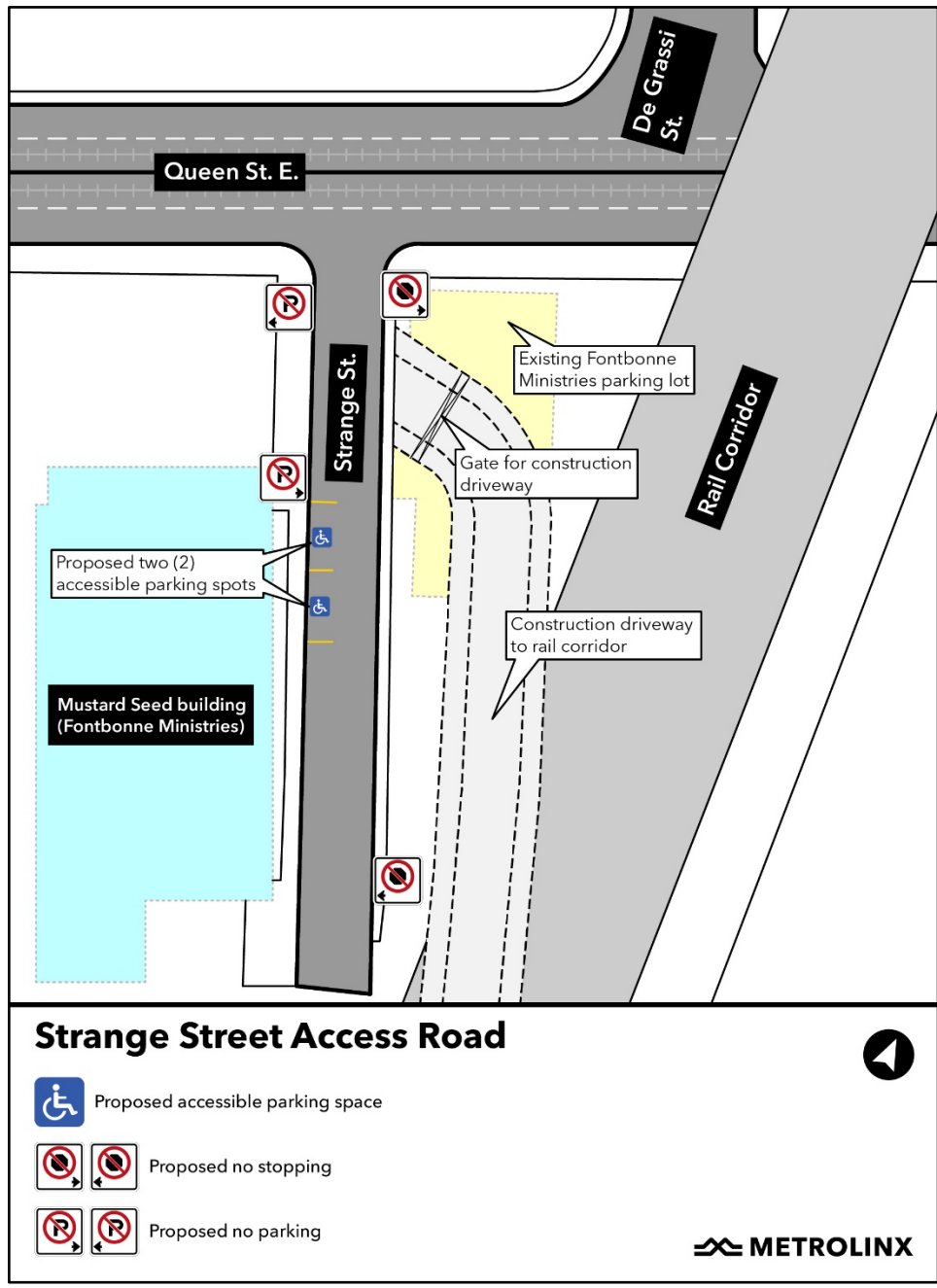


Figure 1 – Temporary Access Road Location

Source: Metrolinx

During this construction period, Fontbonne Ministries will remain operational, and Metrolinx will provide a replacement parking solution to mitigate the impact of the temporary closure. A temporary parking lot will be made available at 356 Eastern Avenue, located approximately 350 metres (a five-minute walk) away from the Fontbonne Ministries building. This replacement parking lot will accommodate staff, residents, and visitors, ensuring continuity of services to the Fontbonne Ministries. Figures 2 and 3 show the location of the replacement parking lot and its layout at 356 Eastern Avenue.



Figure 2 – Replacement Parking Lot Location
Source: Google Maps

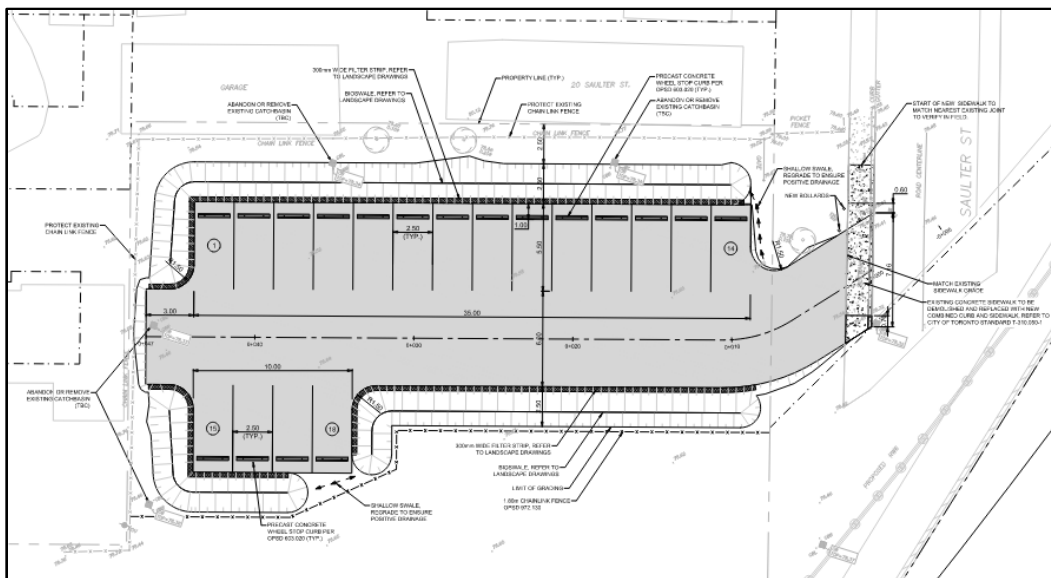


Figure 3 – Replacement Parking Lot Layout at 356 Eastern Avenue Source: Metrolinx

To address the loss of two accessibility parking spaces in the surface parking lot, temporary on-street accessible parking spaces will be designated on the west side of

Strange Street, near the entrance of the Fontbonne Ministries building. This temporary accommodation will reduce the distance that individuals with mobility challenges need to travel. Additional spaces further south on the west side of Strange Street will be designated as regular three-hour maximum on-street parking to help mitigate the overall parking loss.

Strange Street is currently a two-way street with three-hour maximum parking allowed on its east side during the day. During construction, it is recommended that parking on the east side of Strange Street be temporarily removed and stopping prohibited at all times to ensure safe traffic operations. Additionally, five overnight permit parking spaces on the east side of Strange Street, part of Permit Parking Area 7E, will be temporarily unavailable. With Area 7E currently operating at approximately 65% capacity, the temporary loss of these spaces will be accommodated within the area, with Saulter Street identified as the closest alternative location.

Furthermore, throughout the construction period, sidewalks on both sides of Strange Street will remain accessible to pedestrians. To ensure the safe movement of both pedestrians and vehicles, at least two Traffic Control Persons will be stationed at the construction access gate on the east side of Strange Street.

CONTACT

Navi Tathgar
Manager, Transit Infrastructure Projects Transportation Services
Tel: 416-397-4588
Email: navi.tathgar@toronto.ca

SIGNATURE

Ashley Curtis, Deputy General Manager,
Transportation Services