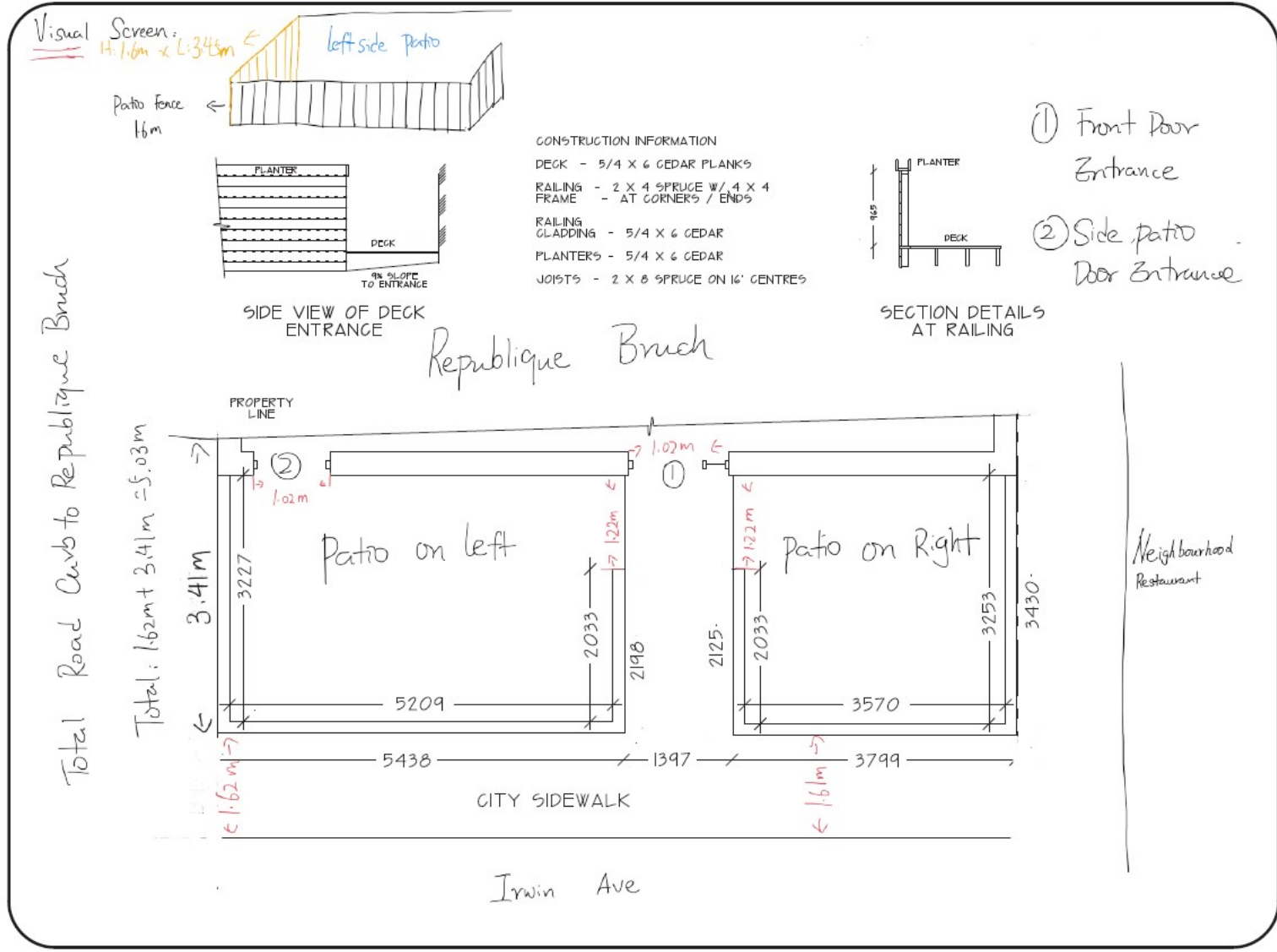


ATTACHMENT 1 - SITE PLAN OF SIDEWALK CAFE



19/09/2024

THESE DRAWINGS ARE THE PROPERTY OF LANDMARK AIR SYSTEMS LIMITED AND MUST BE RETURNED UPON COMPLETION OF THE WORK OR ON REQUEST ALL PERMITS / CERTIFICATES OF APPROVAL FOR THE WORK SHOWN HEREON ARE THE PROPERTY OF LANDMARK AIR SYSTEMS LIMITED UNLESS OTHERWISE CONTRACTUALLY AGREED TO.

REVISIONS	
NO.	DESCRIPTION

REPUBLICQUE BRUNCH
2 IRWIN AVENUE, TORONTO

SCALE: 1/4

DWN: R.G.

DATE: SEP 18, 24

LANDMARK AIR SYSTEMS LIMITED
1203 - 1201 WALDEN CIRCLE
MISSISSAUGA, ONTARIO L5J 4M9
905 - 238-4863 E - bob@landmarkairsystems.ca

PROJECT: 240204