

Parking Amendments - Yonge Street

Date: November 18, 2024

To: Toronto and East York Community Council

From: Director, Planning, Design and Management, Transportation Services

Wards: Ward 12, Toronto-St. Paul's

SUMMARY

As the Toronto Transit Commission (TTC) operates a transit service on Yonge Street, City Council approval of this report is required.

Transportation Services is recommending on-street parking amendments to existing pay-and-display regulations, no parking regulations and the introduction of no-stopping regulations on both sides of Yonge Street, associated with a new pedestrian refuge island being installed on Yonge Street just north of the entrance to the Mount Pleasant Cemetery to a point approximately 106 metres north of Glen Elm Avenue.

The recommended by-law changes would adjust the limits of on-street parking to implement a no-stopping condition near the installation of the pedestrian refuge island to discourage parking or stopping adjacent to the pedestrian refuge island and improve sightlines.

RECOMMENDATIONS

The Director, Planning, Design and Management, Transportation Services recommends that:

1. City Council rescind the existing no parking prohibition in effect at all times on the east side of Yonge Street, between a point 73 metres north of Glen Elm Avenue and a point 29 metres further north.
2. City Council prohibit stopping at all times on the east side of Yonge Street, between a point 73 metres north of Glen Elm Avenue and a point 123 metres north of Glen Elm Avenue.
3. City Council prohibit stopping at all times on the west side of Yonge Street, between a point 122 metres north of Lawton Boulevard and a point 60 metres further north.

4. City Council amend the existing parking machine regulation in effect from 8:00 a.m. to 6:00 p.m. from Monday to Saturday at the rate of \$4.00 per hour for a maximum period of 3 hours on the east side of Yonge Street from a point 170 metres south of Merton Street and a point 266 metres further south to be in effect between a point 170 metres south of Merton Street and a point 123 metres north of Glen Elm Avenue.
5. City Council amend the existing parking machine regulation in effect from 6:00 p.m. to 10:00 p.m. Monday to Saturday and 1:00 p.m. to 10 p.m. on Sunday at the rate of \$4.00 per hour for a maximum period of 4 hours on the east side of Yonge Street from a point 170 metres south of Merton Street and a point 266 metres further south to be in effect between a point 170 metres south of Merton Street and a point 123 metres north of Glen Elm Avenue.
6. City Council amend the existing parking machine regulation in effect from 8:00 a.m. to 6:00 p.m. Monday to Saturday at the rate of \$4.00 per hour for a maximum period of 3 hours on the west side of Yonge Street from a point 170 metres south of Merton Street and a point 40 metres north of Lawton Boulevard to be in effect between a point 170 metres south of Merton Street and a point 182 metres north of Lawton Boulevard.
7. City Council amend the existing parking machine regulation in effect from 6:00 p.m. to 10:00 p.m. Monday to Saturday and 1:00 p.m. to 10:00 p.m. on Sunday at the rate of \$4.00 per hour for a maximum period of 4 hours on the west side of Yonge Street from a point 170 metres south of Merton Street and a point 40 metres north of Lawton Boulevard to be in effect between a point 170 metres south of Merton Street and a point 182 metres north of Lawton Boulevard.
8. City Council authorize the installation of parking machines on the west side of Yonge Street to be in effect from 8:00 a.m. to 6:00 p.m. Monday to Saturday at the rate of \$4.00 per hour for a maximum period of 3 hours between a point 100 metres north of Lawton Boulevard and a point 22 metres further north.
9. City Council authorize the installation of parking machines on the west side of Yonge Street to be in effect from 6:00 p.m. to 10:00 p.m. Monday to Saturday and 1:00 p.m. to 10:00 p.m. on Sunday at the rate of \$4.00 per hour for a maximum period of 4 hours between a point 100 metres north of Lawton Boulevard and a point 22 metres further north.

FINANCIAL IMPACT

All costs associated with necessary signage installation are included within the the Transportation Services 2024 Operating Budget.

The cost associated with the construction of the pedestrian refuge island at this location is approximately \$444,000, inclusive of associated streetscape improvements. Funding is available within the Transportation Services 2024 Capital Budget.

The estimated loss in annual gross revenue as a result of the proposed the removal of seven (7) pay-and-display parking spaces is \$4,650.

DECISION HISTORY

This report addresses a new initiative.

COMMENTS

Transportation Services is undertaking an initiative to improve the safety of pedestrian crossings on Yonge Street at the entrance to the Mount Pleasant Cemetery. An existing desire line for pedestrian crossings was identified at this location due to the entrance to the cemetery and nearby school. The nearest controlled crossings are 225 m south at Heath Street and 470 m north at Merton Street. A technical analysis was completed to review the implementation of a pedestrian refuge island for this location. On-street parking amendments and no-stopping regulations are required to support the pedestrian refuge island.

Existing Conditions

Yonge Street is characterized by the following conditions:

- It is a north/south major arterial roadway, with one motor vehicle lane in each direction on a pavement width of approximately 6.8 m;
- There are one-way cycle tracks in each direction separated by curbs and bollards;
- The daily two-way traffic volume is approximately 15,000 motor vehicles;
- The speed limit is 40 km/hr;
- Heavy trucks are permitted at all times;
- There is TTC service provided; and
- There are sidewalks on both sides of the street.

Parking regulations on the subject section of Yonge Street are as follows:

East side

- No parking anytime, between a point 73 metres north of Glen Elm Avenue and a point 29 metres further north;
- Pay-and-display parking from 8:00 a.m. to 6:00 p.m. Monday to Saturday at \$4.00 per hour to a maximum period of 3 hours from a point 170 metres south of Merton Street and a point 266 metres further south; and
- Pay-and-display parking from 6:00 p.m. to 10:00 p.m. Monday to Saturday and 1:00 p.m. to 10:00 p.m. Sunday at \$4.00 per hour to a maximum period of 4 hours from a point 170 metres south of Merton Street and a point 266 metres further south.

West side

- Pay-and-display parking from 8:00 a.m. to 6:00 p.m. Monday to Saturday at \$4.00 per hour to a maximum period of 3 hours from a point 170 metres south of Merton Street and a point 40 metres north of Lawton Boulevard; and
- Pay-and-display parking from 6:00 p.m. to 10:00 p.m. Monday to Saturday and 1:00 p.m. to 10:00 p.m. Sunday at \$4.00 per hour to a maximum period of 4 hours from a point 170 metres south of Merton Street and a point 40 metres north of Lawton Boulevard.

Proposed Conditions

The proposed changes will result in the loss of three pay-and-display parking spaces on the east side of Yonge Street and four pay-and-display parking spaces on the west side of Yonge Street, north of the Mount Pleasant Cemetery entrance. 49 pay-and-display spaces will remain available on the east side of Yonge Street and 52 pay-and-display spaces will remain available on the west side of Yonge Street.

A map of the area and proposed parking amendments is included in Attachment 1.

The Ward Councillor has been advised of the recommendations of this staff report.

CONTACT

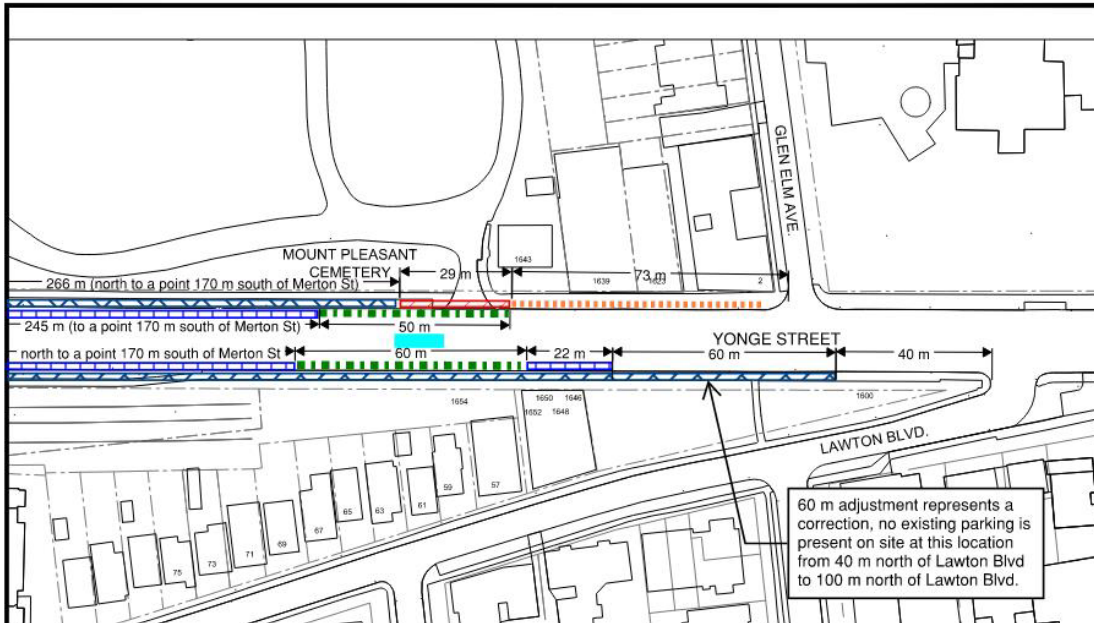
Adam Popper, Manager (Acting) Cycling and Pedestrian Projects, Transportation Services, 416 392 8234, Adam.Popper@toronto.ca

SIGNATURE

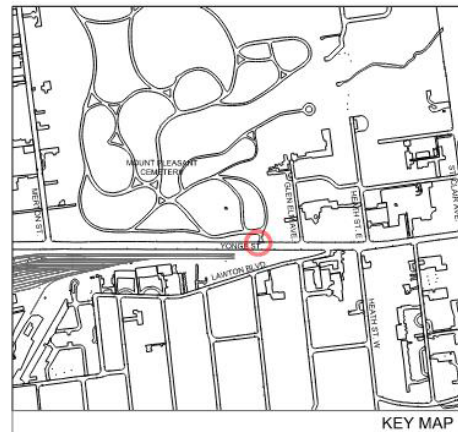
Jacquelyn Hayward
Director, Planning, Design and Management
Transportation Services

ATTACHMENTS

Attachment 1: Map - Parking Amendments – Yonge Street



- EXISTING PAY-AND-DISPLAY PARKING TO BE RESCINDED (8:00 A.M. to 6:00 P.M. Monday to Saturday at \$4.00 per hour to a maximum period of 3 hours and 6:00 P.M. to 10:00 P.M. Monday to Saturday, 1:00 p.m. to 10:00 p.m. Sunday at \$4.00 per hour to a maximum period of 4 hours)
- PROPOSED PAY-AND-DISPLAY PARKING (8:00 A.M. to 6:00 P.M. Monday to Saturday at \$4.00 per hour to a maximum period of 3 hours and 6:00 P.M. to 10:00 P.M. Monday to Saturday, 1:00 p.m. to 10:00 p.m. Sunday at \$4.00 per hour to a maximum period of 4 hours)
- EXISTING PARKING TO REMAIN
- EXISTING NO PARKING ANYTIME TO BE RESCINDED
- PROPOSED NO STOPPING ANYTIME
- PROPOSED PEDESTRIAN REFUGE ISLAND



PARKING AMENDMENTS

YONGE STREET AT MT PLEASANT CEMETERY ENTRANCE



SCALE: N.T.S DRAWN BY: NP/TK DATE: NOV. 2024