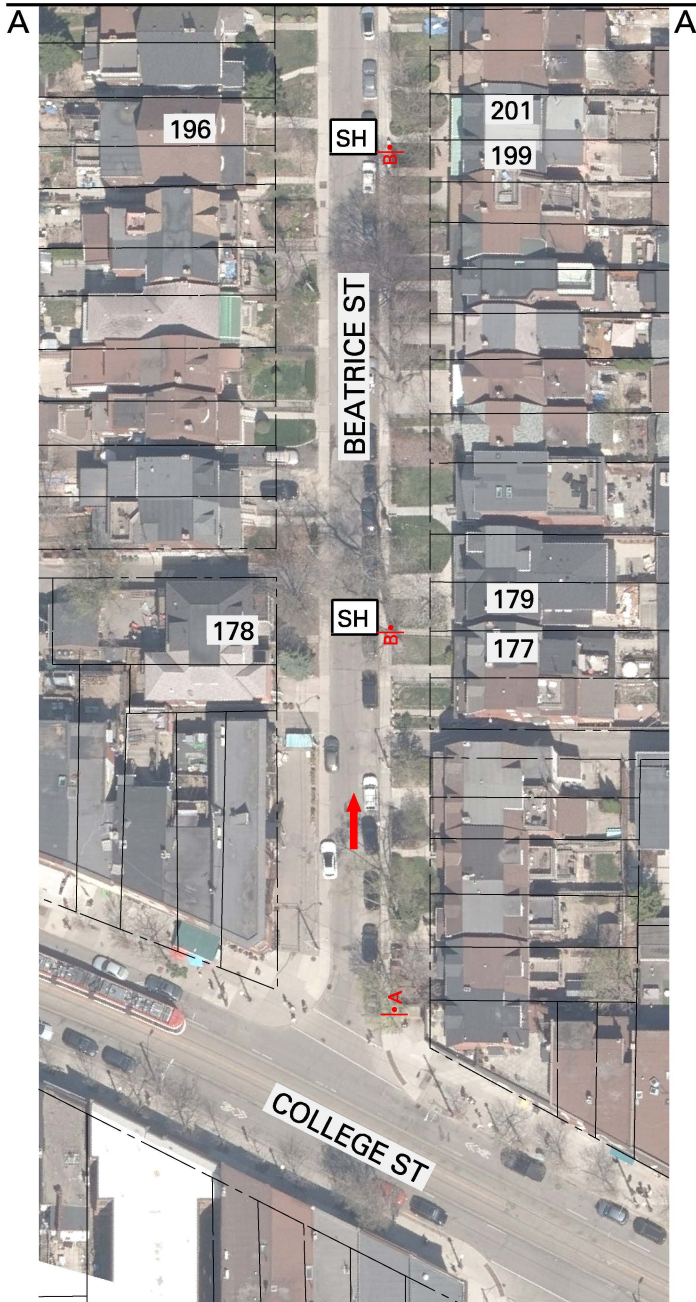





SEE TC-429



SH	PROPOSED ONE-WAY SPEED HUMP
A	 
B	

NOTE:
 EVERY ATTEMPT WILL BE MADE TO UTILIZE EXISTING
 POLES FOR SPEED HUMP SIGNS, HOWEVER, IT MAY BE
 NECESSARY TO INSTALL NEW POLES FOR THESE SIGNS.

SPEED HUMP LOCATIONS PLAN BEATRICE STREET COLLEGE STREET TO MONTROSE AVENUE

