

SELECTED RENDERINGS AND EXTRACTS 86 Lombard Street

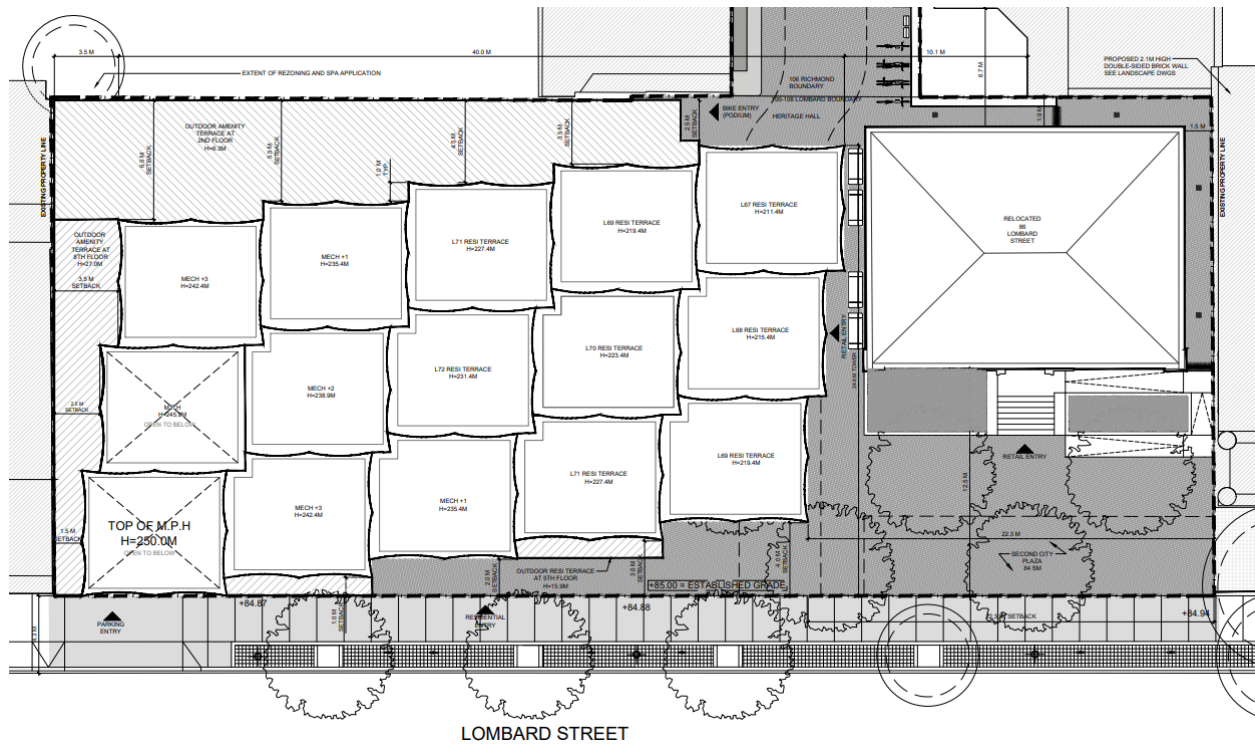


Figure 1: Proposed site plan of 86 Lombard Street included for illustration purposes (OMA & WZMH, 2024).

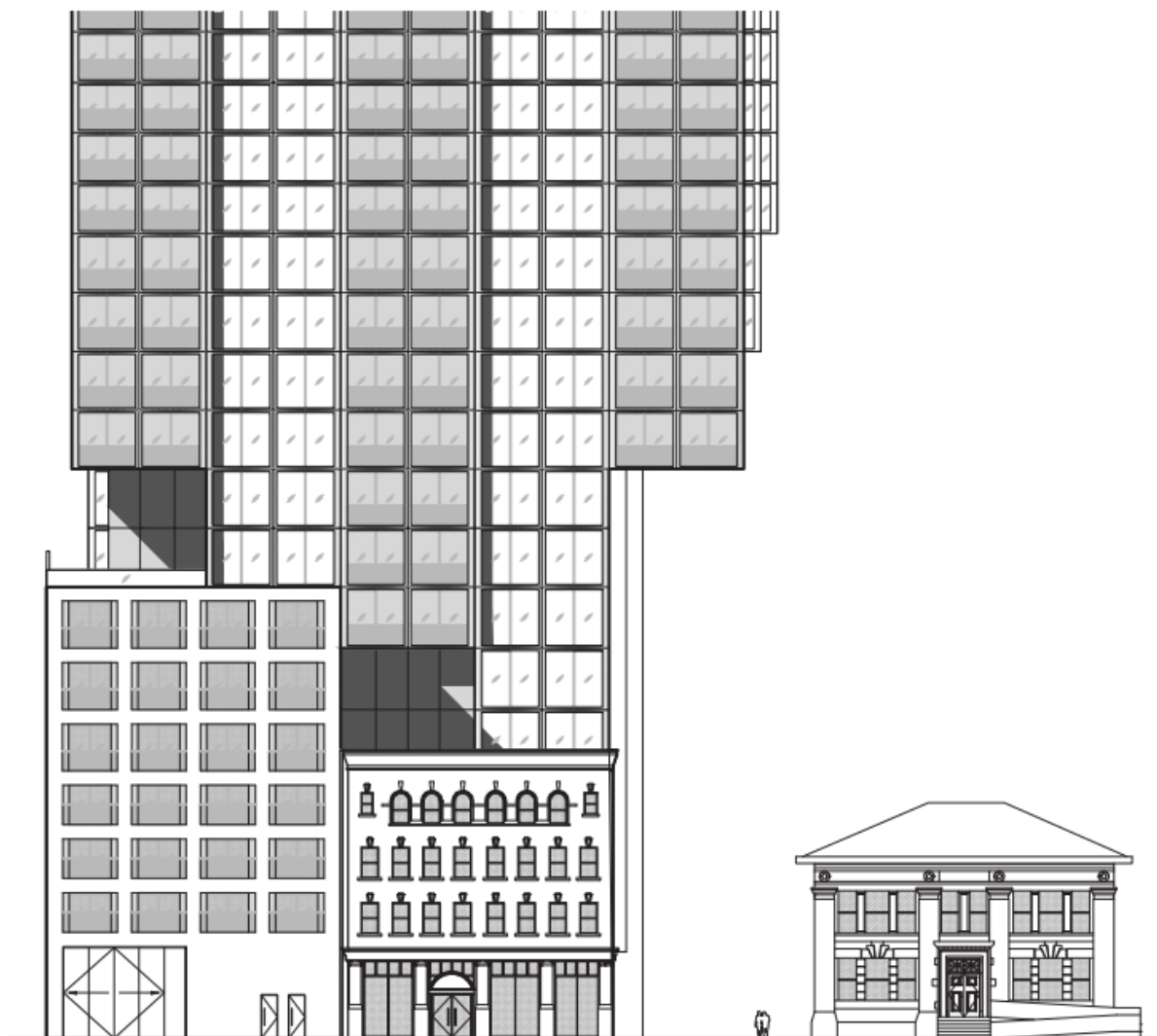


Figure 2: Proposed principal (south) elevation of 86 Lombard Street included for illustration purposes (OMA & WZMH, 2024).

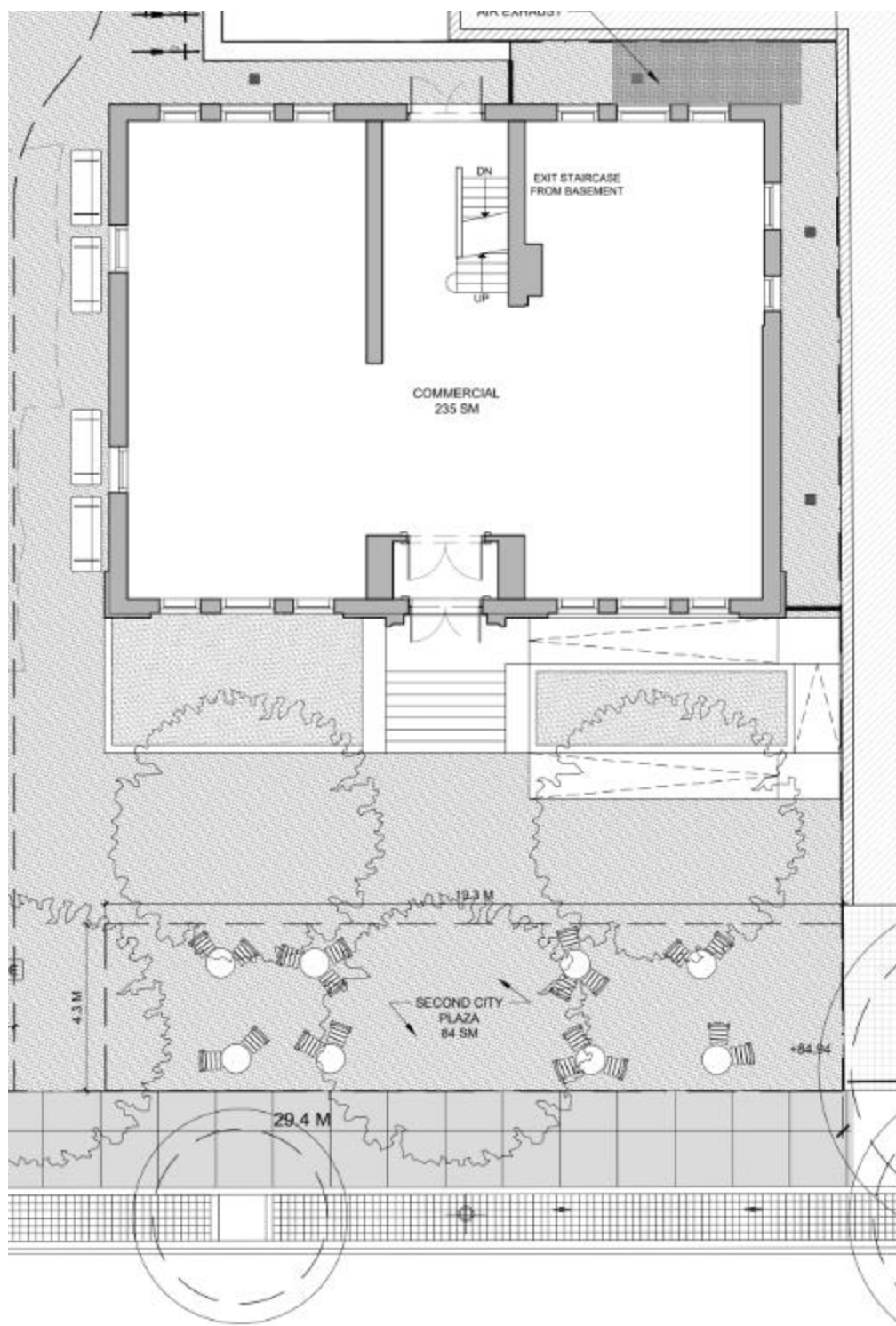


Figure 3: Proposed ground floor plan for 86 Lombard Street included for illustration purposes (OMA & WZMH, 2024).

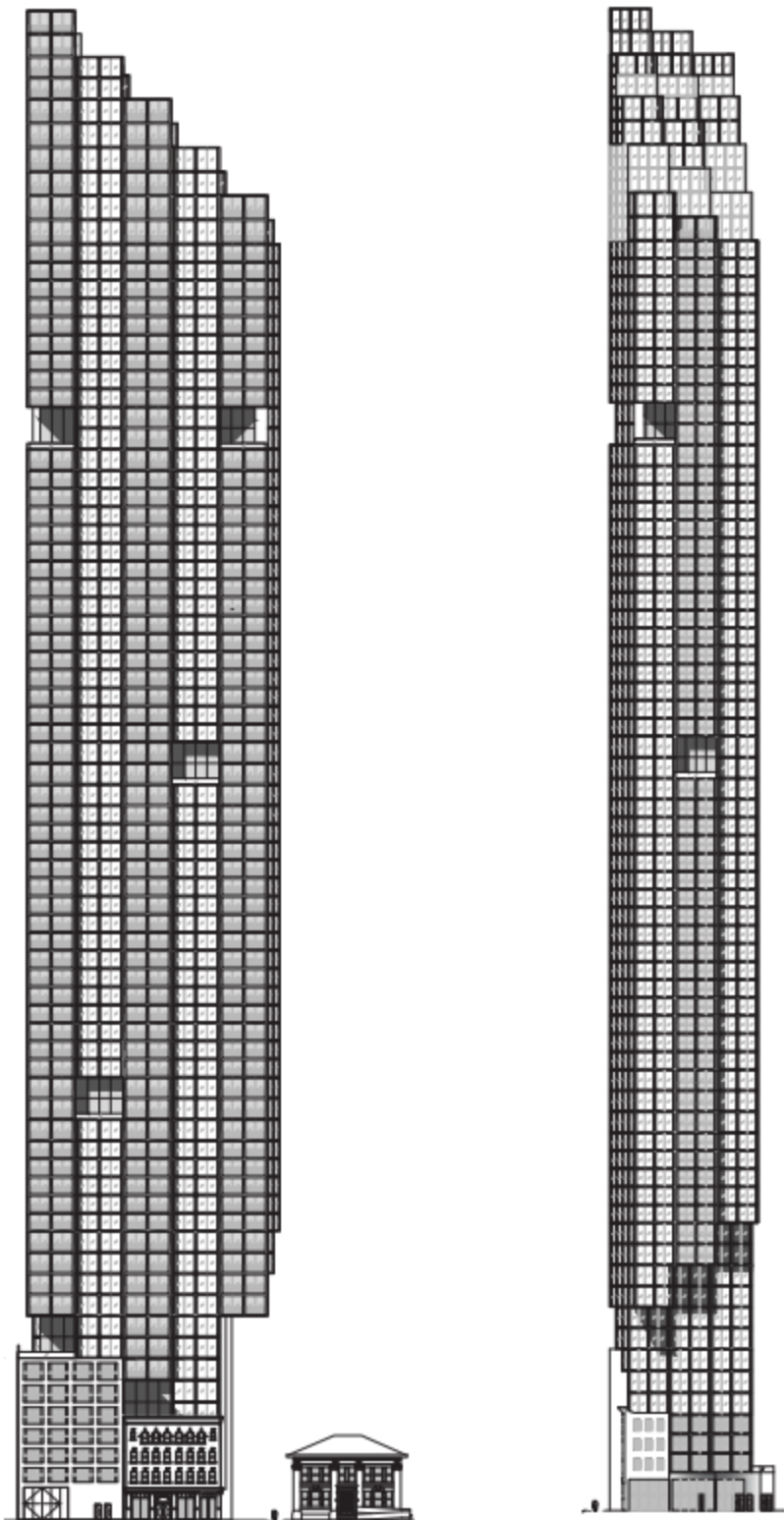


Figure 4: Proposed south and east elevation drawings included for illustration purposes (OMA & WZMH, 2024).

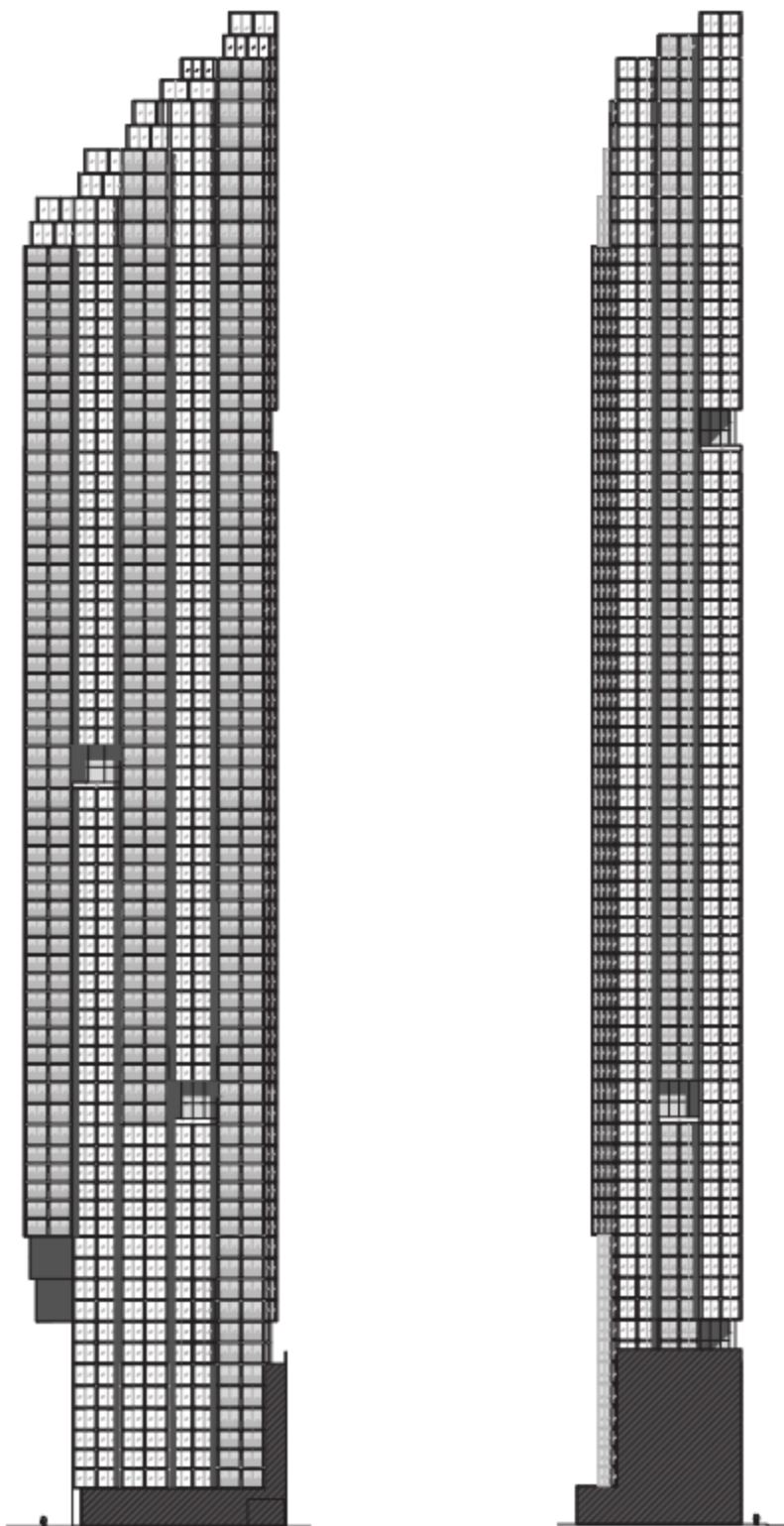


Figure 5: Proposed north and west elevation drawings included for illustration purposes (OMA & WZMH, 2024).

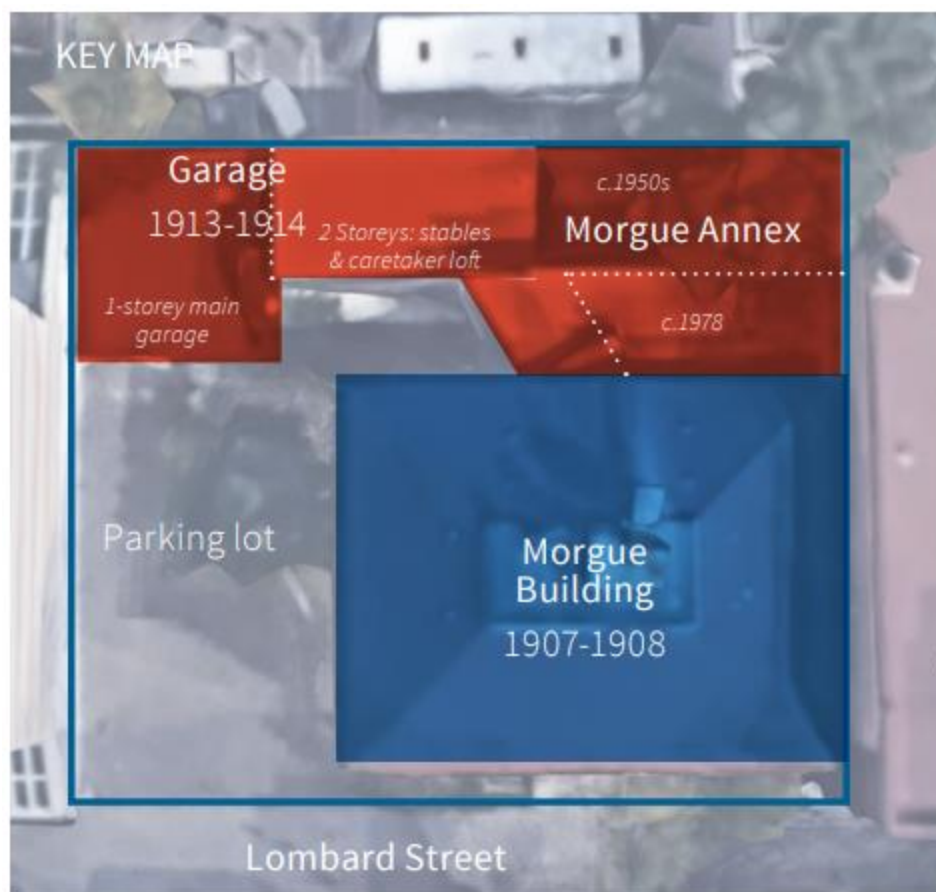


Figure 6: Key map of 86 Lombard Street showing the original Morgue Building footprint to be retained and relocated, as well as the Morgue Annex and Garage (proposed to be removed) (Google 2022, annotated by ERA Architects Inc.).

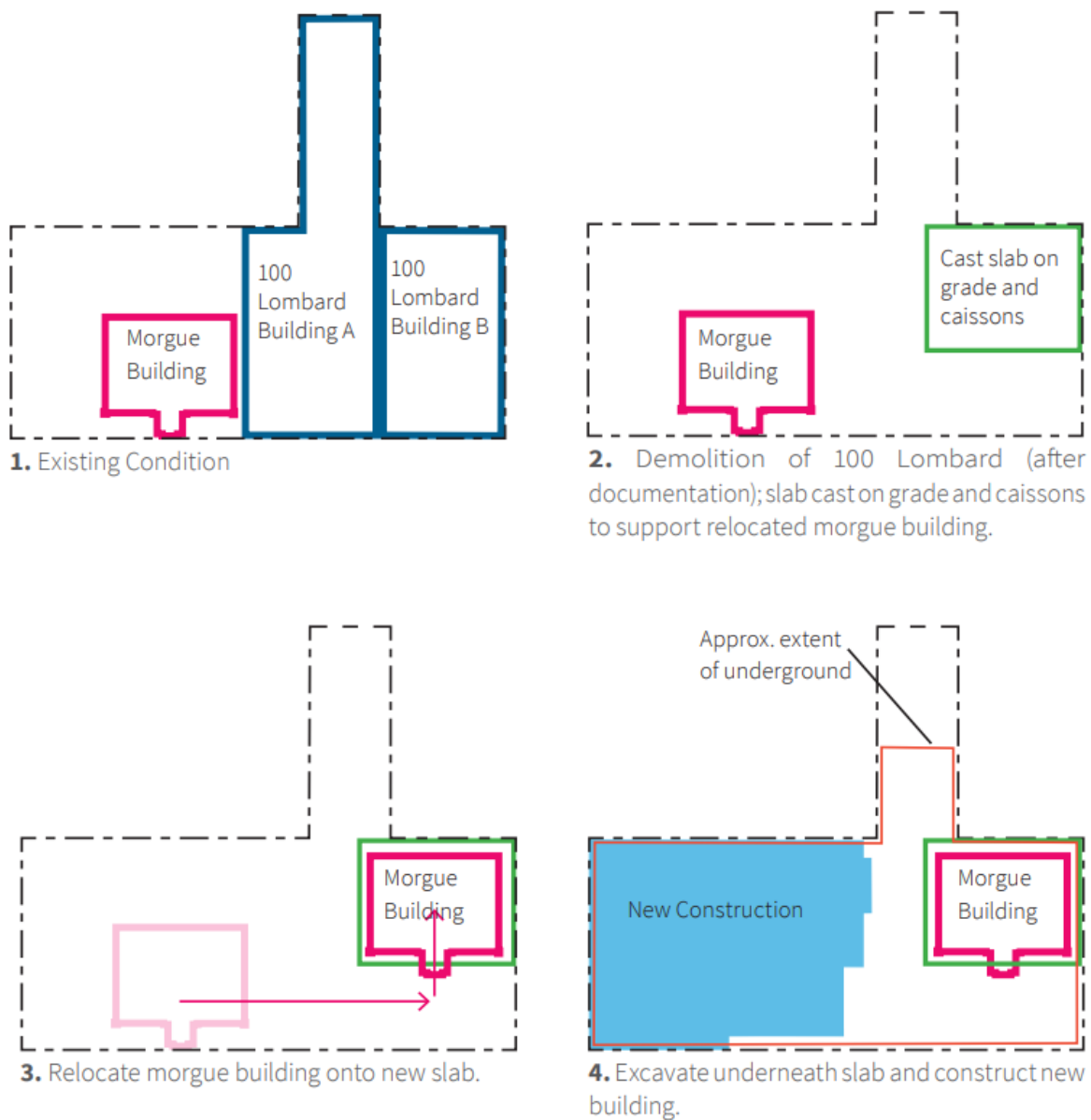


Figure 7: Proposed relocation diagram of 86 Lombard Street (ERA Architects Inc., 2024).



Figure 8: Rendering of the proposed base building, looking north from Lombard Street, included for illustration purposes (OMA & WZMH, 2024).