

All drawings, specifications, related documents and design are the copyright property of the architect and must be returned upon request. Reproduction of the drawings, specifications, related documents and design in whole or in part is strictly forbidden without the architect's written permission.

Revision	Date
1 ISSUED FOR OPA/ZBA	2023-09-15
2 REVISED PROPOSAL FOR OLT	2025-01-31
3 REVISED PROPOSAL FOR OLT	2025-05-15

REVISED PROPOSAL 27 ST - STREET VIEW - LOOKING WEST



NOT FOR  
CONSTRUCTION



giannone  
petricone  
associates

Giannone Petricone Associates Inc. Architects  
96 Spadina Avenue, Suite 900, Toronto, Canada M5V 2J6  
T 416.591.7788 F 416.591.1293 E mail@gpaia.com

1117 QUEEN STREET WEST

TORONTO, ON

SHEET TITLE

STREET VIEWS

DRAWN BY: \_\_\_\_\_  
CHECKED BY: \_\_\_\_\_  
PROJECT START DATE: \_\_\_\_\_  
PROJECT NO.: 22110  
SHEET NUMBER

A\_0.05



Revision	Date
1 ISSUED FOR OPA/ZBA	2023-09-15
2 REVISED PROPOSAL FOR OLT	2025-01-31
3 REVISED PROPOSAL FOR OLT	2025-05-15

NOT FOR  
CONSTRUCTION

REVISED PROPOSAL 27 ST - STREET VIEW - LOOKING WEST



giannone  
petricone  
associates

Giannone Petricone Associates Inc. Architects  
96 Spadina Avenue, Suite 900, Toronto, Canada M5V 2J6  
T 416.591.7788 F 416.591.1293 E mail@gpaia.com

1117 QUEEN STREET WEST

TORONTO, ON

SHEET TITLE

STREET VIEWS

DRAWN BY: \_\_\_\_\_  
CHECKED BY: \_\_\_\_\_  
PROJECT START DATE: \_\_\_\_\_  
PROJECT NO.: 22110  
SHEET NUMBER

A\_0.06



Revision	Date
1 ISSUED FOR OPA/ZBA	2023-09-15
2 REVISED PROPOSAL FOR OLT	2025-01-31
3 REVISED PROPOSAL FOR OLT	2025-05-15

NOT FOR  
CONSTRUCTION



giannone  
petricone  
associates

Giannone Petricone Associates Inc. Architects  
96 Spadina Avenue, Suite 900, Toronto, Canada M5V 2J6  
T 416.591.7788 F 416.591.1293 E mail@gpaa.com

1117 QUEEN STREET WEST

TORONTO, ON

SHEET TITLE

STREET VIEWS

DRAWN BY: \_\_\_\_\_  
CHECKED BY: \_\_\_\_\_  
PROJECT START DATE: \_\_\_\_\_  
PROJECT NO.: 22110  
SHEET NUMBER

A\_0.07



All drawings, specifications, related documents and design are the copyright property of the architect and must be returned upon request. Reproduction of the drawings, specifications, related documents and design in whole or in part is strictly forbidden without the architect's written permission.

Revision	Date
1 ISSUED FOR OPA/ZBA	2023-09-15
2 REVISED PROPOSAL FOR OLT	2025-01-31
3 REVISED PROPOSAL FOR OLT	2025-05-15

NOT FOR  
CONSTRUCTION

REVISED PROPOSAL 27 ST - STREET VIEW - LOOKING EAST



giannone  
petricono  
associates

Giannone Petricono Associates Inc. Architects  
96 Spadina Avenue, Suite 900, Toronto, Canada M5V 2J6  
T 416.591.7788 F 416.591.1293 E mail@gpaia.com

1117 QUEEN STREET WEST

TORONTO, ON

SHEET TITLE

STREET VIEWS

DRAWN BY: \_\_\_\_\_  
CHECKED BY: \_\_\_\_\_  
PROJECT START DATE: \_\_\_\_\_  
PROJECT NO.: 22110  
SHEET NUMBER

A\_0.08



Revision	Date
1 ISSUED FOR OPA/ZBA	2023-09-15
2 REVISED PROPOSAL FOR OLT	2025-01-31
3 REVISED PROPOSAL FOR OLT	2025-05-15

NOT FOR  
CONSTRUCTION



giannone  
petricone  
associates

Giannone Petricone Associates Inc. Architects  
96 Spadina Avenue, Suite 900, Toronto, Canada M5V 2J6  
T 416.591.7788 F 416.591.1293 E mail@gpaia.com

1117 QUEEN STREET WEST

TORONTO, ON

SHEET TITLE

STREET VIEWS

DRAWN BY: \_\_\_\_\_  
CHECKED BY: \_\_\_\_\_  
PROJECT START DATE: \_\_\_\_\_  
PROJECT NO.: 22110  
SHEET NUMBER

A\_0.09

REVISED PROPOSAL 27 ST - STREET VIEW - Tower Reveal

1117 QUEEN ST W  
REVISED PROPOSAL




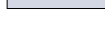










Revision	Date
1 ISSUED FOR OPA/ZBA	2023-09-15
2 REVISED PROPOSAL FOR OLT	2025-01-31
3 REVISED PROPOSAL FOR OLT	2025-05-15

**NOT FOR  
CONSTRUCTION**

### LEGEND

	NON-RESIDENTIAL SPACE
	SHARED NON-RES. + RESIDENTIAL SPACE
	INDOOR AMENITY
	OUTDOOR AMENITY
	1B-1B+D
	2B
	3B
	EXTENT OF U/G LEVEL
	EXTENT OF TOWER
	EXTENT OF PODIUM BUILDING

1. ACCESS DRIVEWAY HAS A MAXIMUM GRADIENT OF 8%, MINIMUM CLEARANCE OF 4.4M, MINIMUM WIDTH OF 4.5M.
2. THE MODIFIED TYPE C LOADING SPACE AND STAGING PAD ABUTTING THE MODIFIED TYPE C LOADING SPACE IS LEVEL (+/- 2%) AND IS CONSTRUCTED OF A MINIMUM 200MM REINFORCED CONCRETE.

3. A TRAINED ON SITE STAFF MEMBER WILL BE AVAILABLE TO MANOUEVR BINS FOR CITY COLLECTION DRIVER AND ALSO ACT AS A FLAGMAN WHEN THE TRUCK IS REVERSING. IN THE EVENT THAT ON SITE STAFF IS UNAVAILABLE AT THE TIME THE CITY COLLECTION VEHICLE WILL LEAVE THE SITE AND NOT RETURN UNTIL NEXT SCHEDULED COLLECTION DAY.

4. IN ALL CASES WHERE COLLECTION VEHICLE IS REQUIRED TO DRIVE ONTO OR OVER A SUPPORTED STRUCTURE (SUCH AS AN UNDERGROUND PARKING GARAGE, INTAKE / OUTAKE GRILL, ETC.) THE STRUCTURE MUST BE DESIGNED TO SAFELY SUPPORT A FULLY LOADED COLLECTION VEHICLE (35,000 KILOGRAMS) AND CONFORMS TO THE FOLLOWING:

A) DESIGN CODE - ONTARIO BUILDING CODE.  
B) DESIGN LOAD - CITY BULK LIFT VEHICLE IN ADDITION TO BUILDING CODE REQUIREMENTS.  
C) IMPACT FACTOR - 5% FOR MAXIMUM VEHICULAR SPEEDS TO 15 KM/H AND 30% FOR HIGHER SPEEDS.

5. ALL ASPHALT WITHIN THE CITY RIGHT OF WAY IS TO BE SUPERPAVE MIX AS PER CITY STANDARDS

6. BEFORE SOLID WASTE COLLECTION SERVICES ARE TO BEGIN THE CITY WILL BE PROVIDED WITH LETTER CERTIFIED BY A PROFESSIONAL ENGINEER THAT IN CASES WHERE A COLLECTION VEHICLE IS REQUIRED TO DRIVE ONTO OR OVER A SUPPORTED STRUCTURE (SUCH AS UNDERGROUND PARKING GARAGE) CAN SAFELY SUPPORT A FULLY LOADED COLLECTION VEHICLE (35,000 KILOGRAMS) AND CONFORMS TO THE FOLLOWING:

A) DESIGN CODE - ONTARIO BUILDING CODE.  
B) DESIGN LOAD - CITY BULK LIFT VEHICLE IN ADDITION TO BUILDING CODE REQUIREMENTS.  
C) IMPACT FACTOR - 5% FOR MAXIMUM VEHICULAR SPEEDS TO 15 KM/H AND 30% FOR HIGHER SPEEDS.

7. WARNING SYSTEM TO CAUTION MOTORISTS LEAVING PARKING GARAGE OF HEAVY VEHICLES WHEN LOADING OPERATIONS ARE OCCURRING, INCLUDES BOTH LIGHTS AND SIGNS.

8. IT IS PLANNED FOR THE NON-RESIDENTIAL COMPONENT TO MAKE USE OF THE MODIFIED TYPE C LOADING SPACES AND AS SUCH NON-RESIDENTIAL COMPONENT WILL ONLY SCHEDULE USE OF THE MODIFIED TYPE C LOADING SPACE ON OPPOSITE DAYS FROM THE COLLECTION DAYS OF RESIDENTIAL COMPONENT TO ENSURE THAT THE TYPE G LOADING SPACE WILL BE VACANT FOR CITY WASTE COLLECTION.

9. BULKY STORAGE ROOM, AREA: 10M<sup>2</sup> MINIMUM.

## 5.5m CURB CUT - TO ACCOMMO- DATE TRUCK MANOEUVERS

# LISGAR ST


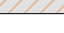
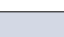
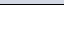
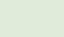


# ABELL ST

A\_1.03

PLOT DATE: 2025-05-15 2:44:17 PM



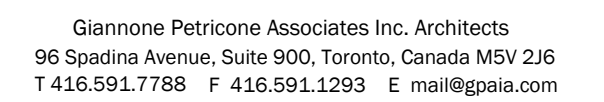
Revision	Date
1 ISSUED FOR OPA/ZBA	2023-09-15
2 REVISED PROPOSAL FOR OLT	2025-01-31
3 REVISED PROPOSAL FOR OLT	2025-05-15

-  NON-RESIDENTIAL SPACE
-  SHARED NON-RES. + RESIDENTIAL SPACE
-  INDOOR AMENITY
-  OUTDOOR AMENITY
-  1B-1B+D
-  2B
-  3B

— — — — — EXTENT OF U/G LEVEL

— — — — — EXTENT OF TOWER

— — — — — EXTENT OF PODIUM BUILDING

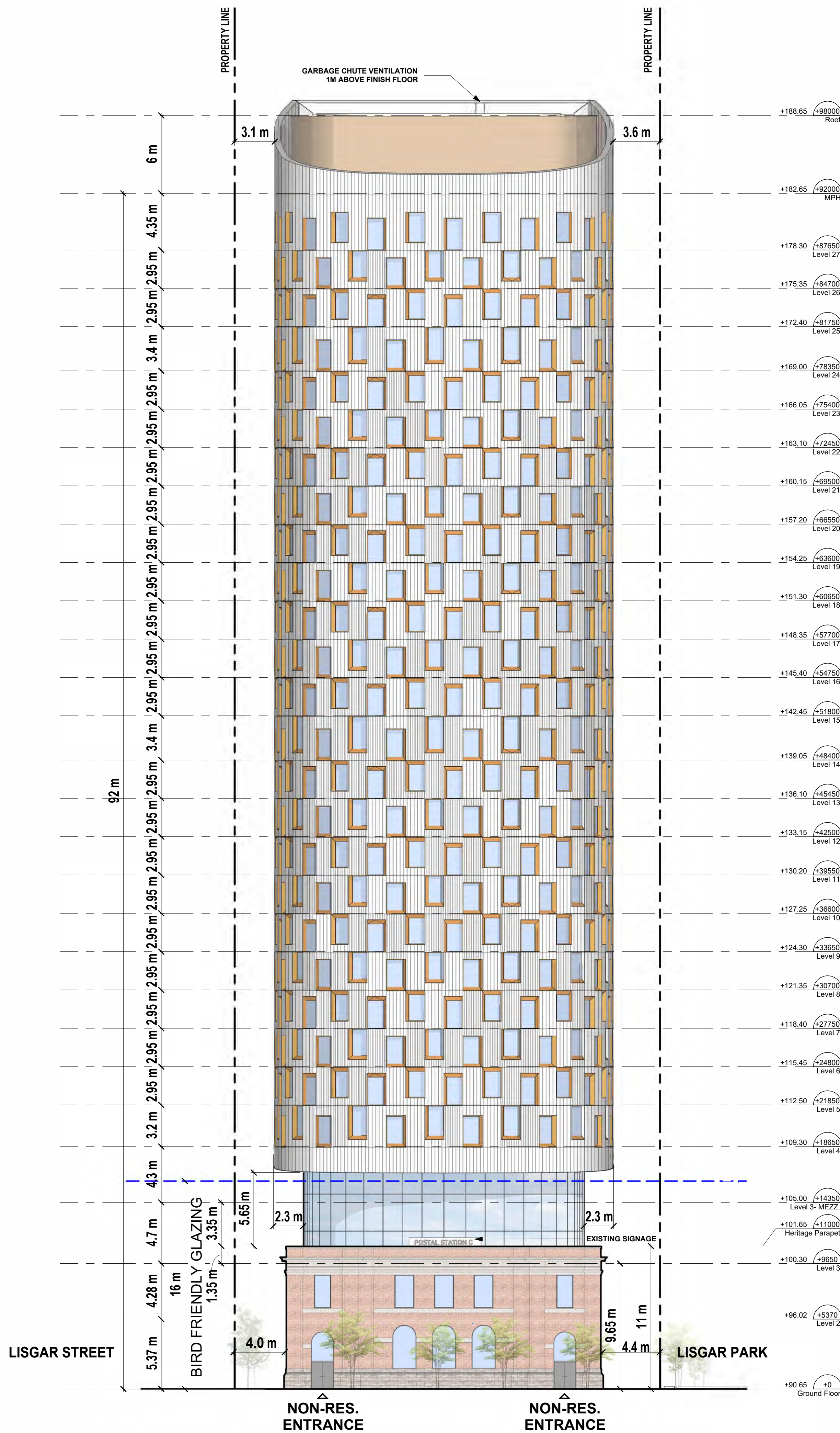


DRAWN BY: \_\_\_\_\_  
 CHECKED BY: \_\_\_\_\_  
 PROJECT START DATE: 08/24/23  
 PROJECT NO.: 22110  
 SHEET NUMBER \_\_\_\_\_

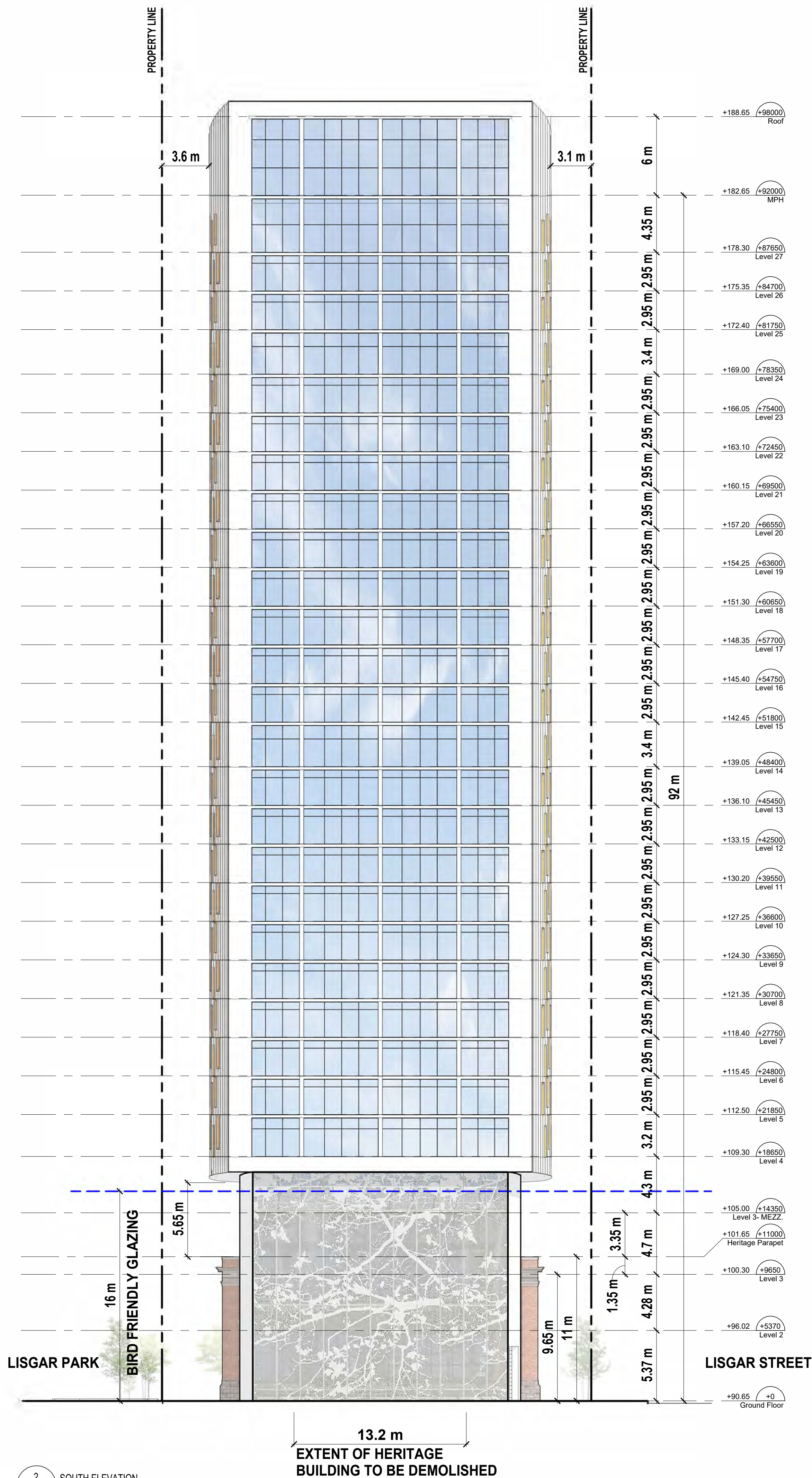
PLOT DATE: 2025-05-15 2:44:18 PM







1 NORTH ELEVATION  
A\_2.01 1:200



2 SOUTH ELEVATION  
A\_2.01 1:200

All drawings, specifications, related documents and design are the copyright property of the architect and must be returned upon request. Reproduction of the drawings, specifications, related documents and design in whole or in part is strictly forbidden without the architect's written permission.

Revision	Date
1 ISSUED FOR OPA/ZBA	2023-09-15
2 REVISED PROPOSAL FOR OLT	2025-01-31
3 REVISED PROPOSAL FOR OLT	2025-05-15

**NOT FOR  
CONSTRUCTION**

NOTE:  
EXTENT OF BIRD FRIENDLY GLAZING TREATMENT  
NOTE: MINIMUM 85% OF ALL EXTERIOR GLAZING, WITHIN FIRST 16M OF GRADE, AND 4M OF ROOF TOP VEGETATION, WILL BE TREATED TO COMPLY WITH BIRD FRIENDLY REQUIREMENTS



**giannone  
petricone  
associates**

Giannone Petricone Associates Inc. Architects  
96 Spadina Avenue, Suite 900, Toronto, Canada M5V 2J6  
T 416.591.7788 F 416.591.1293 E mail@gpaia.com

1117 QUEEN STREET WEST

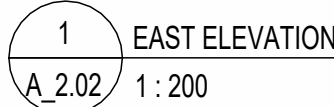
TORONTO, ON  
SHEET TITLE

**NORTH AND SOUTH  
ELEVATIONS**

DRAWN BY:  
CHECKED BY:  
PROJECT START DATE: 07/06/23  
PROJECT NO.: 22110  
SHEET NUMBER

**A\_2.01**





2 WEST ELEVATION  
A\_2.02 1 : 200

All drawings, specifications, related documents and design are the copyright property of the architect and must be returned upon request. Reproduction of the drawings, specifications, related documents and design in whole or in part is strictly forbidden without the architect's written permission.

Revision	Date
1 ISSUED FOR OPA/ZBA	2023-09-15
2 REVISED PROPOSAL FOR OLT	2025-01-31
3 REVISED PROPOSAL FOR OLT	2025-05-15

**NOT FOR  
CONSTRUCTION**

NOTE:

### EXTENT OF BIRD FRIENDLY GLAZING TREATMENT

NOTE: MINIMUM 85% OF ALL EXTERIOR GLAZING, WITHIN FIRST 16M OF GRADE, AND 4M OF ROOF TOP VEGETATION, WILL BE TREATED TO COMPLY WITH BIRD FRIENDLY REQUIREMENTS



**giannone  
petricone  
associates**

Giannone Petricone Associates Inc. Architects  
96 Spadina Avenue, Suite 900, Toronto, Canada M5V 2J6  
T 416.591.7788 F 416.591.1293 E mail@gpaia.com

1117 QUEEN STREET WEST

TORONTO, ON

**SHEET TITLE**

## EAST AND WEST ELEVATIONS

DRAWN BY:	
CHECKED BY:	
PROJECT START DATE:	07/06/23
PROJECT NO.:	22110
SHEET NUMBER	

A\_2.02



