

ATTACHMENT 3

EGLINTON EAST LIGHT RAIL TRANSIT (EELRT) IMAGES

Key features of the EELRT include:

- Proposed service frequency of 4-5 minutes during peak periods;
- Connection to Line 2 and Line 5 at Kennedy Station;
- Connection to the SSE/Line 2 through the future station at Sheppard-McCowan, which may also connect to the Line 4 Sheppard Subway Extension (Line 4 Extension) being studied by Metrolinx;
- Three connections to GO transit at Kennedy, Eglinton, and Guildwood stations;
- Three stops near and on the University of Toronto Scarborough Campus (UTSC) to align with UTSC Master Plan;
- Two connections to the proposed Durham-Scarborough Bus Rapid Transit at Morningside and Ellesmere Roads;
- Maintenance and Storage Facility (MSF) to house and maintain vehicles;
- Introduced public realm improvements through the implementation of the 'Complete Streets Guidelines' which includes multi-modal transportation options with dedicated and safe bicycle and pedestrian infrastructure; and
- Supports other key City priorities, including TransformTO, Net Zero Strategy and Vision Zero Plan (See Figure 2).

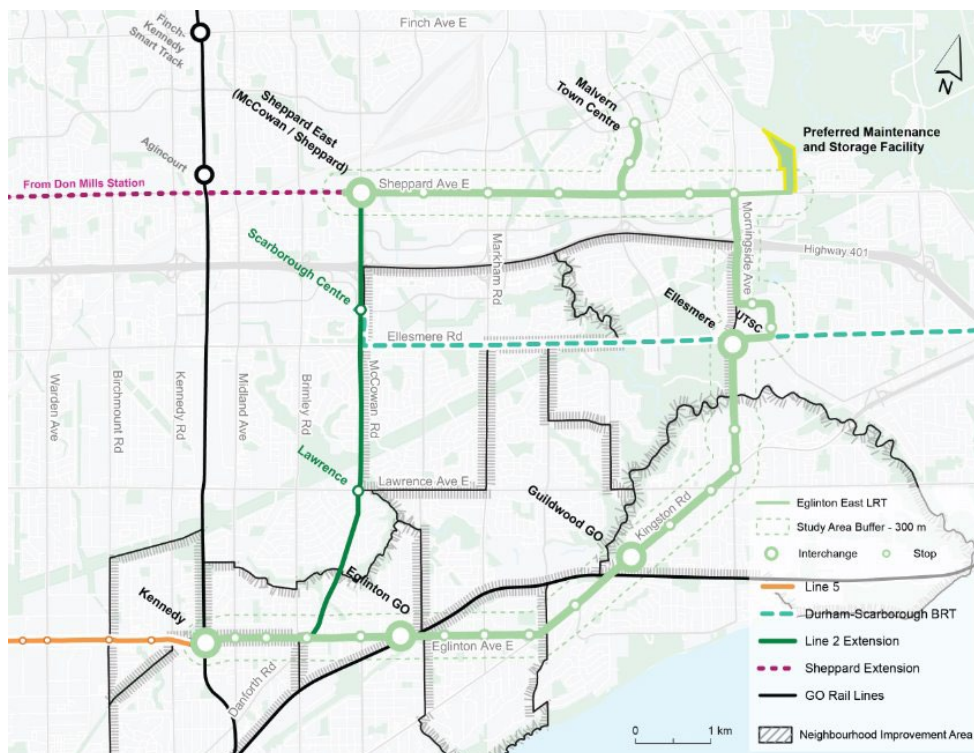


Figure 1. EELRT Project Map

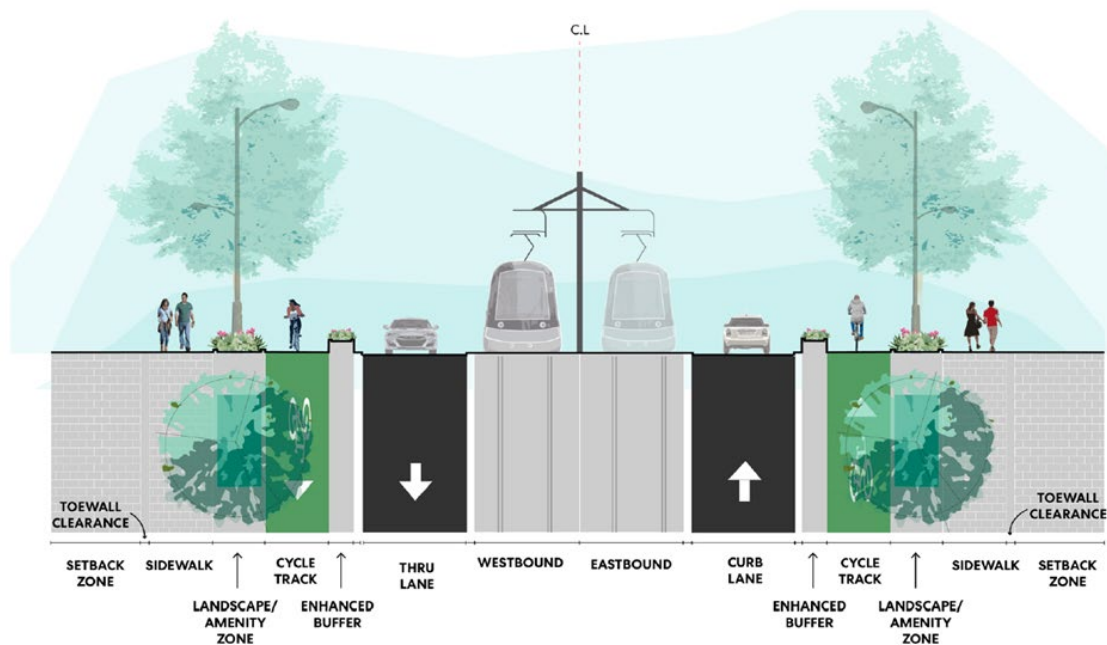


Figure 2. Cross-Section of the EELRT at Eglinton Avenue and Kingston Road

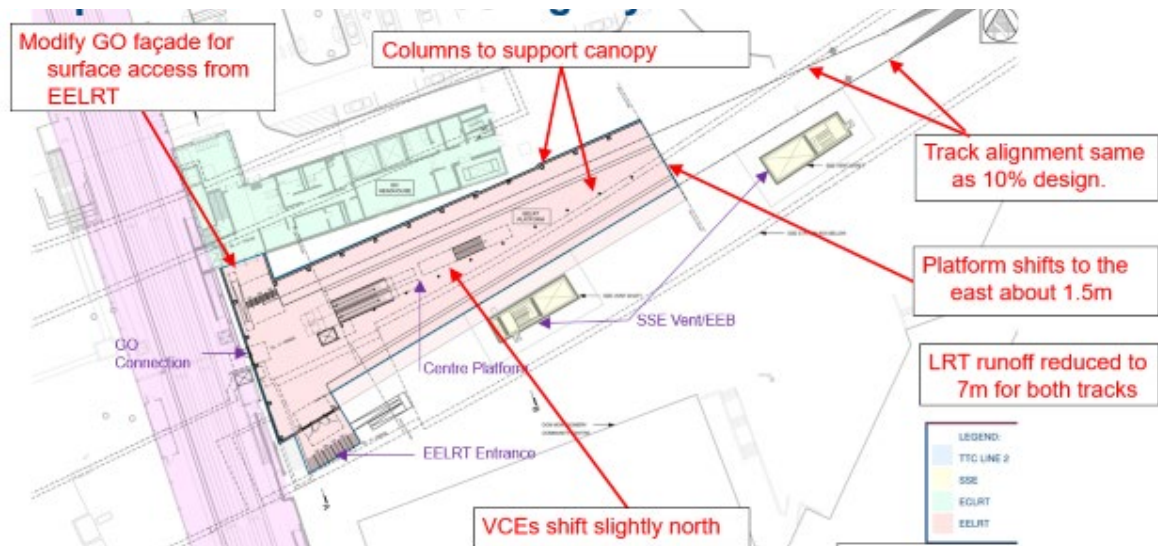


Figure 3. Concept plan for EELRT Kennedy Station Alternative Design (Option 2)

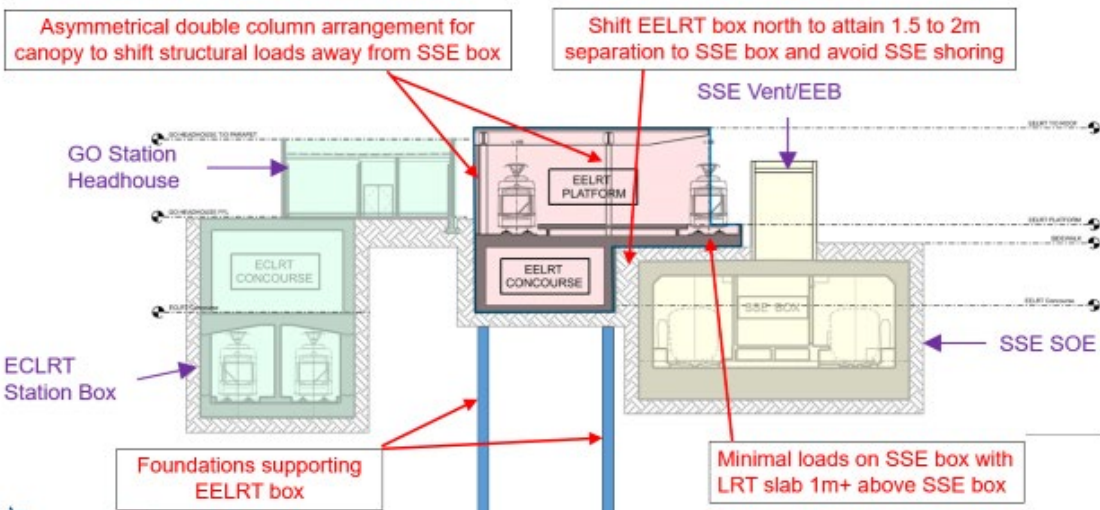


Figure 4. Profile for EELRT Kennedy Station Alternative Design (Option 2). Image includes a below grade interface west of the GO Corridor (immediately east of future SSE box).

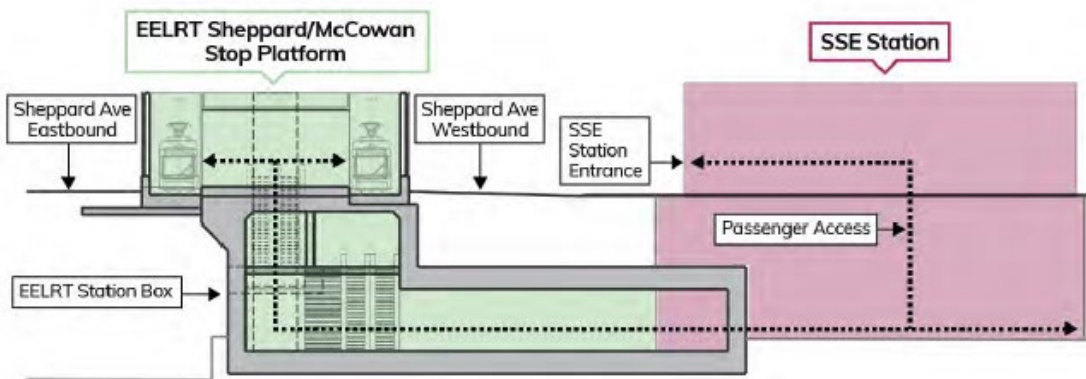


Figure 5. Section view of EELRT Sheppard-McCowan Station east of McCowan Road and the SSE box, showing potential below grade passenger flows.



Figure 6: Sheppard Subway Extension and EELRT Potential Overlap (shown by the area within the black dashed outline)