

Metrolinx Ontario Line – Lower Don Bridge and Minton Place Portal - Temporary Lane Closures on the Don Valley Parkway and F.G. Gardiner Expressway and Temporary Delegation of Authority

Date: April 29, 2025

To: Executive Committee

From: General Manager, Transportation Services

Wards: All Wards

SUMMARY

This report provides an overview of Metrolinx's construction plans for the Ontario Line Lower Don Bridge and the slope stabilization works at the Minton Place Portal, located within the Don Valley Crossing area. These works will involve temporary closures of the Don Valley Parkway, F.G. Gardiner Expressway, and Don Roadway at various stages between 2025 and 2027.

The report outlines key construction activities, associated staging plans, and temporary lane closures required to safely and efficiently deliver these infrastructure works. While most temporary lane closures occur during overnight hours to minimize impacts, one full weekend closure of the Don Valley Parkway is required to facilitate the launch of the new bridge structure.

In addition, the report requests City Council approval to amend City of Toronto Municipal Code Chapter 937, Temporary Closing of Highways, to provide a temporary delegation of authority to the General Manager, Transportation Services, to approve and implement temporary lane closures on the Don Valley Parkway and on the F.G. Gardiner Expressway for defined timeframes to support construction of the Ontario Line Lower Don Bridge and Minton Place Portal slope stabilization work.

The report also seeks City Council approval to amend both Chapter 937 as well as City of Toronto Municipal Code Chapter 27, Council Procedures, in order to delegate to the General Manager, Transportation Services, the authority to temporarily close the Don Roadway for defined timeframes in support of the Ontario Line Lower Don Bridge construction.

Together, these delegated authorities will support the timely delivery of the Ontario Line while enabling staff to respond to dynamic construction schedules, coordinate effectively with other major infrastructure projects, and minimize disruption to the public.

RECOMMENDATIONS

The General Manager, Transportation Services, recommends that:

1. City Council amend City of Toronto Municipal Code Chapter 937, Temporary Closing of Highways, to delegate to the General Manager, Transportation Services, to facilitate the mechanical slope stabilization work related to the Ontario Line Minton Place Portal, despite Section 937-4 of Code Chapter 937, the authority to temporarily close to vehicular traffic:

- a. the northbound middle and outside lanes and adjacent pavement shoulder on the Don Valley Parkway, between 600 metres south of Beechwood Drive and 350 metres north of Leaside Bridge, from 11:00 p.m. of one day to 5:00 a.m. on the following day for up to and including twenty nights between May 31, 2025, and September 30, 2025, inclusive,

and exempt the General Manager, Transportation Services, in carrying out this delegated authority from Section 937-5 of Chapter 937, that being the requirement to notify the local Ward Councillor of the pending closure and the requirement to report on the proposed closure if so requested by the local Ward Councillor.

2. City Council amend City of Toronto Municipal Code Chapter 937, Temporary Closing of Highways, to delegate to the General Manager, Transportation Services, to facilitate the monitoring equipment installation and lighting work related to the Ontario Line Lower Don Bridge, despite Section 937-4 of Code Chapter 937, the authority to temporarily close to vehicular traffic:

- a. the southbound inside lane and adjacent pavement shoulder on the Don Valley Parkway, between 350 metres north of Gerrard Street and the Don Valley Parkway-F.G. Gardiner Expressway on-ramp, from 11:00 p.m. of one day to 5:00 a.m. on the following day for up to and including seven nights between May 26, 2025 and June 28, 2025, inclusive;
- b. the southbound middle lane on the Don Valley Parkway, between 165 metres south of Gerrard Street and the Don Valley Parkway-F.G. Gardiner Expressway on-ramp, from 11:00 p.m. of one day to 5:00 a.m. on the following day for up to and including seven nights between May 26, 2025 and June 28, 2025, inclusive;
- c. the southbound outside lane on the Don Valley Parkway, between 30 metres north of Queen Street and the Don Valley Parkway-F.G. Gardiner Expressway on-ramp, from 11:00 p.m. of one day to 5:00 a.m. on the following day for up to and including seven nights between May 26, 2025 and June 28, 2025, inclusive,
- d. the eastbound inside lane on the F.G. Gardiner Expressway, between 90 metres west of Rees Street and the Don Valley Parkway-F.G. Gardiner Expressway off-ramp, from 11:00 p.m. of one day to 5:00 a.m. on the

following day for up to and including four nights between May 26, 2025 and June 28, 2025, inclusive;

- e. the eastbound middle lane on the F.G. Gardiner Expressway, between 80 metres east of Lower Simcoe Street and the Don Valley Parkway-F.G. Gardiner Expressway off-ramp, from 11:00 p.m. of one day to 5:00 a.m. on the following day for up to and including four nights between May 26, 2025 and June 28, 2025, inclusive;
- f. the eastbound outside lane on the F.G. Gardiner Expressway, between 110 metres west of Bay Street and the Don Valley Parkway-F.G. Gardiner Expressway off-ramp, from 11:00 p.m. of one day to 5:00 a.m. on the following day for up to and including four nights between May 26, 2025 and June 28, 2025, inclusive;
- g. the Don Valley Parkway-F.G. Gardiner Expressway east off-ramp, between the F.G. Gardiner Expressway and the Don Valley Parkway, from 11:00 p.m. of one day to 5:00 a.m. on the following day for up to and including four nights between May 26, 2025 and June 28, 2025, inclusive;
- h. the Don Valley Parkway northbound, all lanes, between the Don Valley Parkway-F.G. Gardiner Expressway off-ramp and 100 metres south of Eastern Avenue, from 11:00 p.m. of one day to 5:00 a.m. on the following day for up to and including four nights between May 26, 2025 and June 28, 2025, inclusive;
- i. the Bay Street-F.G. Gardiner Expressway eastbound on-ramp, between Bay Street and the F.G. Gardiner Expressway, from 11:00 p.m. of one day to 5:00 a.m. on the following day for up to and including four nights between May 26, 2025 and June 28, 2025, inclusive; and
- j. the Rees Street-F.G. Gardiner Expressway eastbound on-ramp, between Rees Street and the F.G. Gardiner Expressway, from 11:00 p.m. of one day to 5:00 a.m. on the following day for up to and including four nights between May 26, 2025 and June 28, 2025, inclusive,

and exempt the General Manager, Transportation Services, in carrying out this delegated authority from Section 937-5 of Chapter 937, that being the requirement to notify the local Ward Councillor of the pending closure and the requirement to report on the proposed closure if so, requested by the local Ward Councillor.

3. City Council direct the General Manager, Transportation Services to add as a condition of permit that, between May 26, 2025 and June 28, 2025, inclusive, the Metrolinx contractor will implement only one temporary directional closure per night on the Don Valley Parkway, between 350 metres north of Gerrard Street and the Don Valley Parkway-F.G. Gardiner Expressway off-ramp, to facilitate the monitoring equipment installation and lighting work related to the Ontario Line Lower Don Bridge.

4. City Council amend City of Toronto Municipal Code Chapter 937, Temporary Closing of Highways, to delegate to the General Manager, Transportation Services, to facilitate the installation and removal of trestle structure, final bridge adjustments and removal of monitoring equipment related to the Ontario Line Lower Don Bridge, despite Section 937-4 of Code Chapter 937, the authority to temporarily close to vehicular traffic:

- a. the southbound inside lane and adjacent pavement shoulder on the Don Valley Parkway, between 350 metres north of Gerrard Street and the Don Valley Parkway-F.G. Gardiner Expressway on-ramp, from 11:00 p.m. of one day to 5:00 a.m. on the following day for up to and including five nights between September 22, 2025 and October 24, 2025, inclusive, and for up to and including eight nights between December 1, 2026 and December 31, 2026, inclusive, and for up to and including two nights between June 1, 2027 and June 30, 2027, inclusive;
- b. the southbound middle lane on the Don Valley Parkway, between 165 metres south of Gerrard Street and the Don Valley Parkway-F.G. Gardiner Expressway on-ramp, from 11:00 p.m. of one day to 5:00 a.m. on the following day for up to and including five nights between September 22, 2025 and October 24, 2025, inclusive, and for up to and including eight nights between December 1, 2026 and December 31, 2026, inclusive, and for up to and including two nights between June 1, 2027 and June 30, 2027, inclusive;
- c. the southbound outside lane on the Don Valley Parkway, between 30 metres north of Queen Street and the Don Valley Parkway-F.G. Gardiner Expressway on-ramp, from 11:00 p.m. of one day to 5:00 a.m. on the following day for up to and including five nights between September 22, 2025 and October 24, 2025, inclusive, and for up to and including eight nights between December 1, 2026 and December 31, 2026, inclusive, and for up to and including two nights between June 1, 2027 and June 30, 2027, inclusive;
- d. the eastbound inside lane on the F.G. Gardiner Expressway, between 90 metres west of Rees Street and the Don Valley Parkway-F.G. Gardiner Expressway off-ramp, from 11:00 p.m. of one day to 5:00 a.m. on the following day for up to and including five nights between September 22, 2025 and October 24, 2025, inclusive, and for up to and including eight nights between December 1, 2026 and December 31, 2026, inclusive, and for up to and including two nights between June 1, 2027 and June 30, 2027, inclusive;
- e. the eastbound middle lane on the F.G. Gardiner Expressway, between 80 metres east of Lower Simcoe Street and the Don Valley Parkway-F.G. Gardiner Expressway off-ramp, from 11:00 p.m. of one day to 5:00 a.m. on the following day for up to and including five nights between September 22, 2025 and October 24, 2025, inclusive, and for up to and including eight nights between December 1, 2026 and December 31, 2026, inclusive, and for up to and including two nights between June 1, 2027 and June 30, 2027, inclusive;
- f. the eastbound outside lane on the F.G. Gardiner Expressway, between 110 metres west of Bay Street and the Don Valley Parkway-F.G. Gardiner

- Expressway off-ramp, from 11:00 p.m. of one day to 5:00 a.m. on the following day for up to and including five nights between September 22, 2025 and October 24, 2025, inclusive, and for up to and including eight nights between December 1, 2026 and December 31, 2026, inclusive, and for up to and including two nights between June 1, 2027 and June 30, 2027, inclusive;
- g. the Don Valley Parkway-F.G. Gardiner Expressway off-ramp, between the F.G. Gardiner Expressway and the Don Valley Parkway, from 11:00 p.m. of one day to 5:00 a.m. on the following day for up to and including five nights between September 22, 2025 and October 24, 2025, inclusive, and for up to and including eight nights between December 1, 2026 and December 31, 2026, inclusive, and for up to and including two nights between June 1, 2027 and June 30, 2027, inclusive;
 - h. the Don Valley Parkway northbound, all lanes, between the Don Valley Parkway-F.G. Gardiner Expressway off-ramp and 100 metres south of Eastern Avenue, from 11:00 p.m. of one day to 5:00 a.m. on the following day for up to and including five nights between September 22, 2025 and October 24, 2025, inclusive, and for up to and including eight nights between December 1, 2026 and December 31, 2026, inclusive, and for up to and including two nights between June 1, 2027 and June 30, 2027, inclusive;
 - i. the Bay Street-F.G. Gardiner Expressway eastbound on-ramp, between Bay Street and the F.G. Gardiner Expressway, from 11:00 p.m. of one day to 5:00 a.m. on the following day for up to and including five nights between September 22, 2025 and October 24, 2025, inclusive, and for up to and including eight nights between December 1, 2026 and December 31, 2026, inclusive, and for up to and including two nights between June 1, 2027 and June 30, 2027, inclusive; and
 - j. the Rees Street- F.G. Gardiner Expressway eastbound on-ramp, between Rees Street and the F.G. Gardiner Expressway, from 11:00 p.m. of one day to 5:00 a.m. on the following day for up to and including five nights between September 22, 2025, and October 24, 2025, inclusive, and for up to and including eight nights between December 1, 2026 and December 31, 2026, inclusive, and for up to and including two nights between June 1, 2027, and June 30, 2027, inclusive,

and exempt the General Manager, Transportation Services, in carrying out this delegated authority from Section 937-5 of Chapter 937, that being the requirement to notify the local Ward Councillor of the pending closure and the requirement to report on the proposed closure if so requested by the local Ward Councillor.

5. City Council amend City of Toronto Municipal Code Chapter 937, Temporary Closing of Highways, to delegate to the General Manager, Transportation Services, to facilitate the launching of east half of the Ontario Line Lower Don Bridge over the Don Valley Parkway, despite Section 937-4 of Code Chapter 937, the authority to temporarily close to vehicular traffic:

- a. the southbound inside lane and adjacent pavement shoulder on the Don Valley Parkway, between 350 metres north of Gerrard Street and the Don Valley Parkway-F.G. Gardiner Expressway on-ramp, from 11:00 p.m. of one Friday to 5:00 a.m. on the following Monday for one weekend between January 15, 2026 and February 16, 2026, inclusive;
- b. the southbound middle lane on the Don Valley Parkway, between 165 metres south of Gerrard Street and the Don Valley Parkway-F.G. Gardiner Expressway on-ramp, from 11:00 p.m. of one Friday to 5:00 a.m. on the following Monday for one weekend between January 15, 2026 and February 16, 2026, inclusive;
- c. the southbound outside lane on the Don Valley Parkway, between 30 metres north of Queen Street and the Don Valley Parkway-F.G. Gardiner Expressway on-ramp, from 11:00 p.m. of one Friday to 5:00 a.m. on the following Monday for one weekend between January 15, 2026 and February 16, 2026, inclusive;
- d. the eastbound inside lane on the F.G. Gardiner Expressway, between 90 metres west of Rees Street and the Don Valley Parkway-F.G. Gardiner Expressway off-ramp, from 11:00 p.m. of one Friday to 5:00 a.m. on the following Monday for one weekend between January 15, 2026 and February 16, 2026, inclusive;
- e. the eastbound middle lane on the F.G. Gardiner Expressway, between 80 metres east of Lower Simcoe Street and the Don Valley Parkway-F.G. Gardiner Expressway off-ramp, from 11:00 p.m. of one Friday to 5:00 a.m. on the following Monday for one weekend between January 15, 2026 and February 16, 2026, inclusive;
- f. the eastbound outside lane on the F.G. Gardiner Expressway, between 110 metres west of Bay Street and the Don Valley Parkway-F.G. Gardiner Expressway off-ramp, from 11:00 p.m. of one Friday to 5:00 a.m. on the following Monday for one weekend between January 15, 2026 and February 16, 2026, inclusive;
- g. the Don Valley Parkway-F.G. Gardiner Expressway off-ramp, between the F.G. Gardiner Expressway and the Don Valley Parkway, from 11:00 p.m. of one Friday to 5:00 a.m. on the following Monday for one weekend between January 15, 2026 and February 16, 2026, inclusive;
- h. the Don Valley Parkway northbound, all lanes, between the Don Valley Parkway-F.G. Gardiner Expressway off-ramp and 100 metres south of Eastern Avenue, from 11:00 p.m. of one Friday to 5:00 a.m. on the following Monday for one weekend between January 15, 2026 and February 16, 2026, inclusive;
- i. the Bay Street-F.G. Gardiner Expressway eastbound on-ramp, between Bay Street and the F.G. Gardiner Expressway, from 11:00 p.m. of one Friday to

5:00 a.m. on the following Monday for one weekend between January 15, 2026 and February 16, 2026, inclusive; and

- j. the Rees Street- F.G. Gardiner Expressway eastbound on-ramp, between Rees Street and the F.G. Gardiner Expressway, from 11:00 p.m. of one Friday to 5:00 a.m. on the following Monday for one weekend between January 15, 2026 and February 16, 2026, inclusive,

and exempt the General Manager, Transportation Services, in carrying out this delegated authority from Section 937-5 of Chapter 937, that being the requirement to notify the local Ward Councillor of the pending closure and the requirement to report on the proposed closure if so, requested by the local Ward Councillor.

6. City Council amend City of Toronto Municipal Code Chapter 937, Temporary Closing of Highways, to delegate to the General Manager, Transportation Services, to facilitate the installation of access scaffolding in August 2026 and its removal in November 2026 related to the Ontario Line Lower Don Bridge, despite Section 937-4 of Code Chapter 937, the authority to temporarily close to vehicular traffic:

- a. the eastbound inside lane on the F.G. Gardiner Expressway, between Parliament Street and the Don Valley Parkway-F.G. Gardiner Expressway off-ramp, from, 11:00 p.m. of one day to 5:00 a.m. on the following day for up to and including two nights between August 1, 2026 and August 31, 2026, inclusive, and for up to and including two nights between November 1, 2026 and November 30, 2026, inclusive;
- b. the east-to-northbound inside lane on the Don Valley Parkway-F.G. Gardiner Expressway off-ramp, between the F.G. Gardiner Expressway and the Don Valley Parkway, from 11:00 p.m. of one day to 5:00 a.m. on the following day for up to and including two nights between August 1, 2026 and August 31, 2026, inclusive, and for up to and including two nights between November 1, 2026 and November 30, 2026, inclusive;
- c. the northbound inside lane on the Don Valley Parkway, between the Don Valley Parkway-F.G. Gardiner Expressway off-ramp and 100 metres south of Eastern Avenue, from 11:00 p.m. of one day to 5:00 a.m. on the following day for up to and including two nights between August 1, 2026 and August 31, 2026, inclusive, and for up to and including two nights between November 1, 2026 and November 30, 2026, inclusive;
- d. the southbound inside lane on the Don Valley Parkway, between Dundas Street and the Don Valley Parkway-F.G. Gardiner Expressway on-ramp, from 11:00 p.m. of one day to 5:00 a.m. on the following day for up to and including two nights between August 1, 2026 and August 31, 2026, inclusive, and for up to and including two nights between November 1, 2026 and November 30, 2026, inclusive; and
- e. the south-to-westbound inside lane on the Don Valley Parkway-F.G. Gardiner Expressway on-ramp, between the Don Valley Parkway and 150 metres

south, from 11:00 p.m. of one day to 5:00 a.m. on the following day for up to and including two nights between August 1, 2026 and August 31, 2026, inclusive, and for up to and including two nights between November 1, 2026 and November 30, 2026, inclusive,

and exempt the General Manager, Transportation Services, in carrying out this delegated authority from Section 937-5 of Chapter 937, that being the requirement to notify the local Ward Councillor of the pending closure and the requirement to report on the proposed closure if so, requested by the local Ward Councillor.

7. City Council amend City of Toronto Municipal Code Chapter 937, Temporary Closing of Highways, to delegate to the General Manager, Transportation Services, to facilitate the installation of access scaffolding in August 2026 and its removal in November 2026 related to the Ontario Line Lower Don Bridge, despite Section 937-4 of Code Chapter 937, the authority to temporarily close to vehicular traffic:

- a. the southbound outside lane on the Don Valley Parkway, between 50 metres north of Eastern Avenue and the Don Valley Parkway-F.G. Gardiner Expressway on-ramp, from 11:00 p.m. of one day to 5:00 a.m. on the following day for up to and including two nights between August 1, 2026 and August 31, 2026, inclusive, and for up to and including two nights between November 1, 2026 and November 30, 2026, inclusive;
- b. the south-to-westbound outside lane on the Don Valley Parkway-F.G. Gardiner Expressway on-ramp, between the Don Valley Parkway and 150 metres south, from 11:00 p.m. of one day to 5:00 a.m. on the following day for up to and including two nights between August 1, 2026 and August 31, 2026, inclusive, and for up to and including two nights between November 1, 2026 and November 30, 2026, inclusive;
- c. the eastbound outside lane on F.G. Gardiner Expressway, between Parliament Street and the Don Valley Parkway-F.G. Gardiner Expressway off-ramp, from 11:00 p.m. of one day to 5:00 a.m. on the following day for up to and including two nights between August 1, 2026 and August 31, 2026, inclusive, and for up to and including two nights between November 1, 2026 and November 30, 2026, inclusive;
- d. the east-to-northbound outside lane on the Don Valley Parkway-F.G. Gardiner Expressway off-ramp, between the F.G. Gardiner Expressway and the Don Valley Parkway, from 11:00 p.m. of one day to 5:00 a.m. on the following day for up to and including two nights between August 1, 2026 and August 31, 2026, inclusive, and for up to and including two nights between November 1, 2026 and November 30, 2026, inclusive;
- e. the northbound middle lane on the Don Valley Parkway, between the Don Valley Parkway-F.G. Gardiner Expressway off-ramp and 200 metres south of Eastern Avenue, from 11:00 p.m. of one day to 5:00 a.m. on the following day for up to and including two nights between August 1, 2026 and August 31,

2026, inclusive, and for up to and including two nights between November 1, 2026 and November 30, 2026, inclusive; and

- f. the northbound outside lane on the Don Valley Parkway, between the Don Valley Parkway-F.G. Gardiner Expressway off-ramp and 100 metres south of Eastern Avenue, from 11:00 p.m. of one day to 5:00 a.m. on the following day for up to and including two nights between August 1, 2026 and August 31, 2026, inclusive, and for up to and including two nights between November 1, 2026 and November 30, 2026, inclusive,

and exempt the General Manager, Transportation Services, in carrying out this delegated authority from Section 937-5 of Chapter 937, that being the requirement to notify the local Ward Councillor of the pending closure and the requirement to report on the proposed closure if so, requested by the local Ward Councillor.

8. City Council amend City of Toronto Municipal Code Chapter 937, Temporary Closing of Highways, to delegate to the General Manager, Transportation Services, the authority to temporarily close to vehicular traffic:

- a. the Don Roadway, southbound, between the Don Valley Parkway and Lake Shore Boulevard East, from 11:00 p.m. of one day to 5:00 a.m. on the following day for up to and including seven nights between May 26, 2025 and June 28, 2025, inclusive, to facilitate the monitoring equipment installation and lighting work related to the Ontario Line Lower Don Bridge;
- b. the Don Roadway, northbound, between Lake Shore Boulevard East and the Don Valley Parkway, from 11:00 p.m. of one day to 5:00 a.m. on the following day for up to and including four nights between May 26, 2025 and June 28, 2025, inclusive, to facilitate the monitoring equipment installation and lighting work related to the Ontario Line Lower Don Bridge;
- c. the Don Roadway, northbound and southbound, between the Don Valley Parkway and Lake Shore Boulevard, from 11:00 p.m. of one day to 5:00 a.m. on the following day for up to and including five nights between September 22, 2025 and October 24, 2025, inclusive, and for up to and including eight nights between December 1, 2026 and December 31, 2026, inclusive, and for up to and including two nights between June 1, 2027 and June 30, 2027, inclusive, to facilitate the installation and removal of trestle structure, final bridge adjustments and removal of monitoring equipment related to the Ontario Line Lower Don Bridge;
- d. the Don Roadway, northbound and southbound, between Don Valley Parkway and Lake Shore Boulevard, from 11:00 p.m. on one Friday to 5:00 a.m. on the following Monday for one weekend between January 15, 2026 and February 16, 2026, inclusive, to facilitate the launching of east half of the Ontario Line Lower Don Bridge over the Don Valley Parkway;
- e. the Don Roadway, southbound, between the Don Valley Parkway and Lake Shore Boulevard East, from 11:00 p.m. of one day to 5:00 a.m. on the

following day for up to and including two nights between August 1, 2026 and August 31, 2026, inclusive, and for up to and including two nights between November 1, 2026 and November 30, 2026, inclusive, to facilitate the installation of access scaffolding in August 2026 and its removal in November 2026 related to the Ontario Line Lower Don Bridge; and

- f. the Don Roadway, northbound, between Lake Shore Boulevard East and the Don Valley Parkway, from 11:00 p.m. of one day to 5:00 a.m. on the following day for up to and including two nights between August 1, 2026 and August 31, 2026, inclusive, and for up to and including two nights between November 1, 2026 and November 30, 2026, inclusive, to facilitate the installation of access scaffolding in August 2026 and its removal in November 2026 related to the Ontario Line Lower Don Bridge,

and exempt the General Manager, Transportation Services, in carrying out this delegated authority from Section 937-5 of Chapter 937, that being the requirement to notify the local Ward Councillor of the pending closure and the requirement to report on the proposed closure if so requested by the local Ward Councillor.

9. City Council amend City of Toronto Municipal Code Chapter 27, Council Procedures, to provide that the current delegation to Community Council to temporarily close public lanes or public alleys, local roads, collector roads, and minor arterial roads, does not include closures delegated to the General Manager, Transportation Services, in carrying out the authority in Part 8 above.

10. City Council authorize the City Solicitor to introduce the necessary bills to give effect to City Council's decision and City Council authorize the City Solicitor to make any necessary clarifications, refinements, minor modifications, technical amendments, or by-law amendments as may be identified by the City Solicitor or General Manager, Transportation Services, in order to give effect to Parts 1 to 9, inclusive.

FINANCIAL IMPACT

There are no financial impacts associated with this report. The Chief Financial Officer and Treasurer has reviewed this report and agrees with the financial impact information.

DECISION HISTORY

In February 2021, City Council adopted, with amendments, Item IE19.10 titled "Metrolinx Projects - Eglinton Crosstown West Extension, Yonge North Subway Extension and Ontario Line - Temporary Delegation for Long-term Road Closures", granting delegated authority to the General Manager, Transportation Services, to temporarily close pedestrian and vehicular traffic highways or portions of highways for the purpose of constructing the Eglinton Crosstown West Extension and Ontario Line, excluding its proposed above ground section, between the Don River and Gerrard Street for 365 days until December 31, 2030. Through the report, City Council also exempted the General Manager, Transportation Services, in carrying out this delegated Metrolinx Ontario Line – LDB & Minton Portal - Temporary Lane Closures on the DVP and Gardiner Expressway

authority from Section 937-5 of Chapter 937, that being the requirement to notify the local Ward Councillor of the pending closure and the requirement to report on the proposed closure if so, requested by the local Ward Councillor.

Link: <https://secure.toronto.ca/council/agenda-item.do?item=2021.IE19.10>

In May 2023, City Council adopted Item EX4.9 titled “Metrolinx Ontario Line – Temporary Lane Closures on the Don Valley Parkway and F.G. Gardiner Expressway and Temporary Delegation of Authority”, granting delegated authority to the General Manager, Transportation Services, to temporarily close sections of the Don Valley Parkway, F.G. Gardiner Expressway, and Don Roadway for the purpose of constructing the Ontario Line Lower Don Bridge and Don valley Crossing. Through the report, City Council also exempted the General Manager, Transportation Services, in carrying out this delegated authority, from Section 937-5 of Chapter 937, that being the requirements to notify the local Ward Councillor of the pending closure and the requirement to report on the proposed closure if so, requested by the local Ward Councillor.

Link: <https://secure.toronto.ca/council/agenda-item.do?item=2023.EX4.9>

In March 2024, City Council reopened Item EX4.9 and amended Chapter 937 of the City of Toronto Municipal Code to revise the previously approved timelines for temporary lane closures on the Don Valley Parkway required for the Ontario Line Lower Don Bridge works. The amendment was necessary due to delays in contractor procurement that impacted the original construction schedule.

Link: <https://secure.toronto.ca/council/agenda-item.do?item=2024.MM16.41>

In May 2024, City Council approved Item EX14.2 titled “Ontario Line Pape Segment Advanced Works – Temporary Road Closures and Transportation Impacts”, granting delegated authority to the General Manager, Transportation Services, to temporarily close sections of the Don Valley Parkway for the purpose of soil stabilization work at the Minton Place Portal site. Through the report, City Council also exempted the General Manager, Transportation Services, in carrying out this delegated authority, from Section 937-5 of Chapter 937, that being the requirement to notify the local Ward Councillor of the pending closure and the requirement to report on the proposed closure if so, requested by the local Ward Councillor.

Link: <https://secure.toronto.ca/council/agenda-item.do?item=2024.EX14.2>

COMMENTS

In April 2023, City Council approved Item EX4.9, granting a temporary delegation of authority to the General Manager, Transportation Services, for temporary lane closures on the Don Valley Parkway (DVP), F.G. Gardiner Expressway, and Don Roadway to facilitate advanced and structural works for the Ontario Line Lower Don Bridge and Don Valley Crossing. Subsequently, in February 2024, City Council adopted Item EX14.2,

approving a separate set of temporary lane closures on the DVP to support slope stabilization works at the Minton Place Portal.

At the time of these approvals, the lane closure requirements were based on preliminary staging assumptions developed as part of the constructability assessment, prior to contractor procurement. Since that time, Metrolinx has retained Kenaidan & Obayashi JV for the construction of the Lower Don Bridge and Leaside Valley Builders for the construction of the Don Valley Crossing and Minton Place Portal works. These contractors have now confirmed their construction methodologies, equipment requirements, and work zone logistics, resulting in a refined temporary lane closure plan.

This report seeks City Council approval for the updated lane closure requirements necessary to safely and efficiently deliver the Lower Don Bridge construction and to complete the remaining slope stabilization works at the Minton Place Portal, located within the Don Valley Crossing area. The following sections of this report provide details on the construction staging, temporary closure schedules, and inter-agency coordination efforts to minimize disruption and maintain network mobility.

Ontario Line Lower Don Bridge

Metrolinx will construct an approximately 120 metres long clear span steel arch bridge to carry the Ontario Line train tracks over the Don Valley Parkway (DVP) and Don River. The new bridge will be located just north of the existing Lower Don Bridge. Figure 1 shows a rendering of the new Ontario Line Lower Don Bridge.



Figure 1 – Ontario Line Bridge North of the Lower Don Bridge
(Artist's Rendering)

Source: Metrolinx

To facilitate bridge construction over the DVP and Don River, the Metrolinx contractor has evaluated multiple construction methodologies with a focus on minimizing traffic impacts and reducing the overall construction timeline. The selected approach involves the installation of a temporary bridge structure (trestle) adjacent to the DVP, which will

Metrolinx Ontario Line – LDB & Minton Portal - Temporary Lane Closures on the DVP and Gardiner Expressway

allow for continuous bridge assembly off-site. Once a partial section of the bridge is assembled, it will be launched across the DVP using a sliding mechanism mounted on the deck of the trestle.

After the initial bridge section is erected over the DVP, work will continue adjacent to the highway to complete the remaining bridge assembly, cable tightening, and deck construction. Upon completion, the temporary trestle will be dismantled in reverse sequence, again prioritizing minimal disruption to the DVP.

Construction activities requiring a series of short-term temporary lane closures have been divided into seven stages, each associated with a specific closure window as described below:

Advanced Work:

Metrolinx's contractor has completed all advanced works related to installation of brackets and diversion of fibre optic cable on the south side of the existing Lower Don River Bridge. City Council approval for temporary road closures required to facilitate these works was granted through Item EX4.9 in April 2023.

Structural Work:

Stage 1: Monitoring Equipment Installation and Lighting Work (May to June 2025)

Metrolinx's contractor will install monitoring equipment required for the safe construction of the temporary trestle structure. This includes installation of sensors near existing oil pipelines, installation of monitoring targets on existing Lower Don River Bridge piers, installation of tilt meters near the Don River seawall, and relocation of existing lighting infrastructure to make way for the future construction.

Metrolinx's contractor will complete these works using temporary nightly (11 p.m. to 5 a.m.) lane closures between May 26, 2025 and June 28, 2025, as below:

- Seven nightly full closures of the DVP southbound lanes, between 350 metres north of Gerrard Street and the F.G. Gardiner Expressway.
- Four nightly full closures of the DVP northbound lanes, between the F.G. Gardiner Expressway and 100 metres south of Eastern Avenue.

Stage 2: Installation of Trestle over DVP (September to October 2025)

After Stage 1 works, Metrolinx's contractor will install the trestle structure over the Don River and DVP. The trestle structure over the DVP will be a clear span without any central supports, thus minimizing any impacts on the DVP. This work is critical to enabling offline bridge assembly and future launching operations. Figure 2 shows the temporary trestle structure across the Don River and DVP.

Metrolinx's contractor will complete this work using five temporary nightly (11 p.m. to 5 a.m.) full closures of the DVP (both directions), between 350 metres north of Gerrard Street and the F.G. Gardiner Expressway, from September 22, 2025 to October 24, 2025.

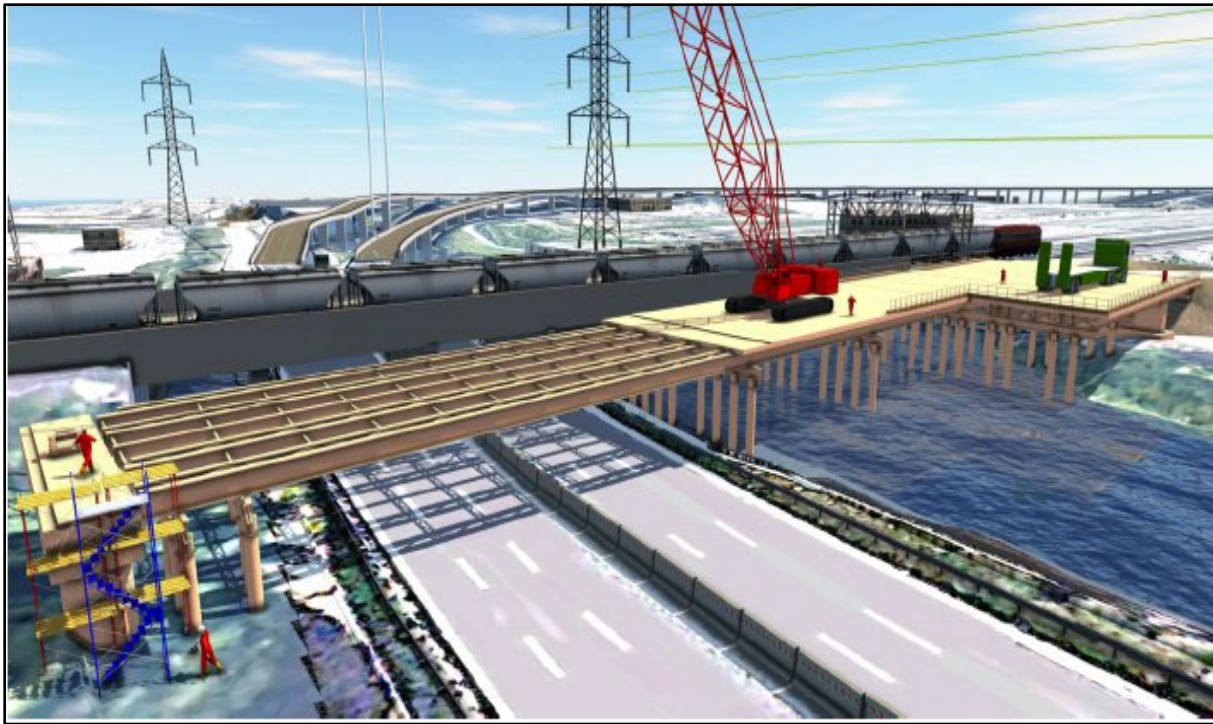


Figure 2 – Temporary Trestle Structure
(Artist's Rendering)

Source: Metrolinx

Stage 3: Launching of East Half of the Bridge (January to February 2026)

After the completion of the temporary trestle structure, the east half of the bridge will be assembled on a slide rail system atop the trestle and then launched across the DVP using a push-pull system. Temporary support towers will be placed on the DVP during this operation and removed before reopening the travel lanes. Figure 3 shows the assembled section of the bridge.

Metrolinx's contractor will complete the bridge arch launch operation using a continuous temporary full closure of the DVP, between 350 metres north of Gerrard Street and the F.G. Gardiner Expressway, for 54 hours (Friday 11 p.m. to Monday 5 a.m.). This temporary full closure will take place between January 15, 2026 and February 16, 2026.



Figure 3 – Assembled Bridge Section
(Artist's Rendering)

Source: Metrolinx

Stage 4: Installation of Access Scaffolding (August 2026)

After launching the east half of the bridge over the DVP, Metrolinx's contractor will continue with construction of the west half of the bridge over the Don River. Once completed, overhead scaffolding will be installed over the entire bridge for paint touch-ups and lighting installation. Figure 4 shows the entire bridge over which access scaffolding will be installed.

The scaffold erection will be completed using temporary nightly (11 p.m. to 5 a.m.) closures between August 1, 2026 and August 31, 2026, as below:

- Two nightly inside northbound and southbound lane closures on the DVP, between Dundas Street and the F.G. Gardiner Expressway.
- Two nightly outside northbound and southbound lane closures on the DVP, between 50 metres north of Eastern Avenue and the F.G. Gardiner Expressway.

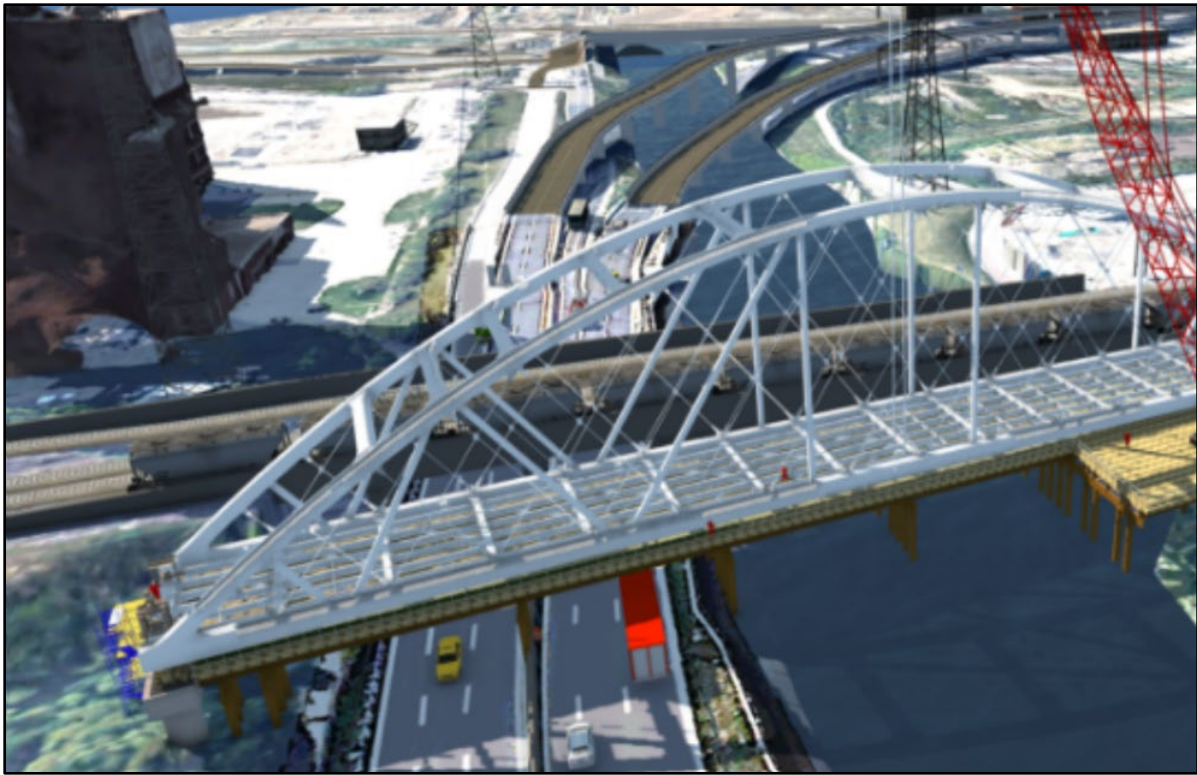


Figure 4 – Access Scaffolding over OL Lower Don Bridge
(Artist's Rendering)

Source: Metrolinx

Stage 5: Removal of Access Scaffolding (November 2026)

After completion of paint touch-ups and lighting installation, the access scaffolding will be removed using the temporary nightly (11 p.m. to 5 a.m.) lane closures between November 1, 2026 and November 30, 2026, as below:

- Two nightly inside northbound and southbound lane closures on the DVP, between Dundas Street and the F.G. Gardiner Expressway.
- Two nightly outside northbound and southbound lane closures on the DVP, between Dundas Street and the F.G. Gardiner Expressway.

Stage 6: Removal of Temporary Trestle Structure (December 2026)

Upon completion of bridge deck construction, jacking towers will raise the bridge for safe dismantling of the trestle structure. Sections of the temporary trestle will be lowered onto transport trucks and removed from site. Figure 5 shows jacking towers to facilitate trestle structure removal.

Metrolinx's contractor will complete this work using eight temporary nightly (11 p.m. to 5 a.m.) full closures of the DVP, between 350 metres north of Gerrard Street and the F.G. Gardiner Expressway, from December 1, 2026 to December 31, 2026.

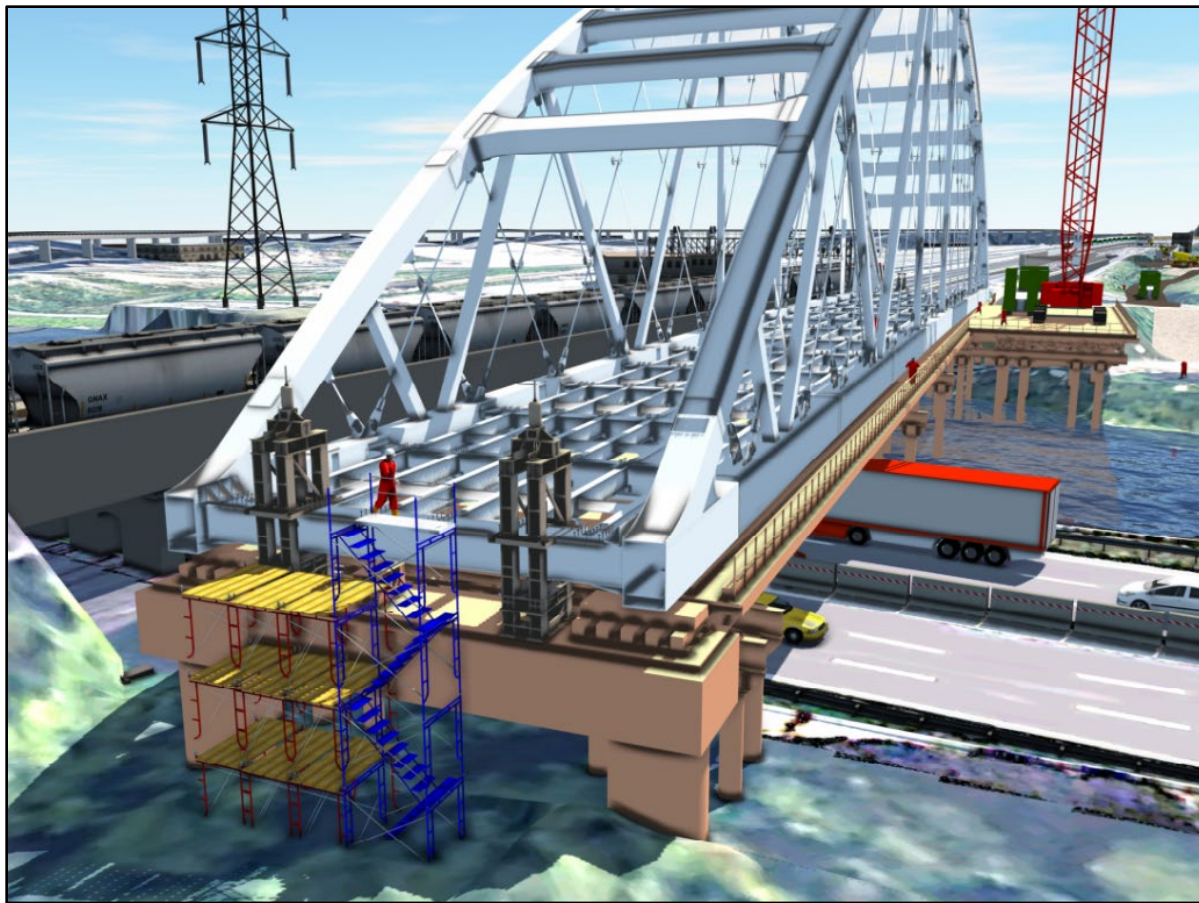


Figure 5 – Temporary Trestle Structure Removal
(Artist's Rendering)

Source: Metrolinx

Stage 7: Final Bridge Adjustments and Monitoring Equipment Removal (June 2027)

Final activities include lowering the bridge onto permanent bearings, removing monitoring devices, and decommissioning the temporary lighting system. Metrolinx's contractor will complete these works using two temporary nightly (11 p.m. to 5 a.m.) full closures of the DVP, between 350 metres north of Gerrard Street and the F.G. Gardiner Expressway, from June 1, 2027 to June 30, 2027, as below:

Table 1 summarizes the temporary lane closure requirements for various construction stages.

Table 1: Temporary Lane Closure Requirement for the Ontario Line Lower Don Bridge

Construction Stage	Temporary Lane Closures ⁽¹⁾	Duration of Temporary Lane Closures	No. of Temporary Lane Closures	Closure Window
Stage 1	SB all lanes	11 p.m. to 5 a.m.	7	May 26, 2025, to June 28, 2025
	NB all lanes	11 p.m. to 5 a.m.	4	
Stage 2	Full Closure	11 p.m. to 5 a.m.	5	September 22, 2025, to October 24, 2025
Stage 3	Full Closure	11 p.m. on Friday to 5 a.m. on Monday	1	January 15, 2026, to February 16, 2026
Stage 4	SB inside lanes NB inside lanes	11 p.m. to 5 a.m.	2	August 1, 2026, to August 31, 2026
	SB outside lanes NB outside lanes	11 p.m. to 5 a.m.	2	August 1, 2026, to August 31, 2026
Stage 5	SB inside lanes NB inside lanes	11 p.m. to 5 a.m.	2	November 1, 2026, to November 30, 2026
	SB outside lanes NB outside lanes	11 p.m. to 5 a.m.	2	November 1, 2026, to November 30, 2026
Stage 6	Full closure	11 p.m. to 5 a.m.	8	December 1, 2026, to December 31, 2026
Stage 7	Full Closure	11 p.m. to 5 a.m.	2	June 1, 2027, to June 30, 2027

1) Temporary lane closure limits are shown in Tables 2 to 6

Temporary Lane Closure Limits and Detour Routing

Temporary lane closures during various construction stages will extend beyond the DVP and impact key segments of the F.G. Gardiner Expressway and Don Roadway. To

facilitate safe traffic flow during nightly lane closures, temporary restrictions will be implemented on the F.G. Gardiner Expressway to accommodate merging and terminating tapers. Temporary directional closures on Don Roadway will also be required to prevent traffic movements between Lake Shore Boulevard East and the closed portion of the DVP.

The temporary lane closure limits for Stage 1 are detailed in Table 2 for southbound lane closure and Table 3 for northbound lane closure.

Table 2
Temporary Closure of DVP Southbound All Lanes (Stage 1)

Road	Lane	Limit 1	Limit 2
DVP	SB Inside	350 m north of Gerrard St.	DVP-Gardiner on-ramp
DVP	SB Middle	165 m south of Gerrard St.	DVP-Gardiner on-ramp
DVP	SB Outside	30 m north of Queen St.	DVP-Gardiner on-ramp
Don Roadway	SB	DVP	Lake Shore Blvd. East

The temporary nightly full closure of the southbound lanes on the DVP south of Gerrard Street will restrict vehicular access to the F.G. Gardiner Expressway westbound and Don Roadway southbound. The southbound motorists will exit the DVP at Eastern Avenue and continue westbound on the road network to connect with the F.G. Gardiner Expressway westbound using the Lower Jarvis Street on-ramp or other subsequent on-ramps. Similarly, the motorists destined to Lake Shore Boulevard East and Don Roadway may detour via Eastern Avenue, Cherry Street and Lake Shore Boulevard East.

Table 3
Temporary Closure of DVP Northbound All Lanes (Stage 1)

Road	Lane	Limit 1	Limit 2
Gardiner	EB inside	90 m west of Rees St.	DVP-Gardiner off-ramp
Gardiner	EB middle	80 m east of Lower Simcoe St.	DVP-Gardiner off-ramp
Gardiner	EB outside	110 m west of Bay St.	DVP-Gardiner off-ramp
DVP-Gardiner off-ramp	All lanes	Gardiner	DVP

Road	Lane	Limit 1	Limit 2
DVP	NB all lanes	DVP-Gardiner off-ramp	100m south of Eastern Ave.
Don Roadway	NB	Lake Shore Blvd. E.	DVP
Bay-Gardiner on-ramp	All lanes	Bay St.	Gardiner EB
Rees-Gardiner on-ramp	All lanes	Rees St.	Gardiner EB

The temporary nightly full closure of the northbound lanes on the DVP, south of Eastern Avenue will restrict vehicular access from the F.G. Gardiner Expressway eastbound and Don Roadway northbound. Eastbound motorists will exit the F.G. Gardiner Expressway at Jarvis Street or other upstream off-ramps and continue through the City road network to connect with the DVP northbound at Eastern Avenue. With the temporary closure of Don Roadway northbound in place, eastbound and westbound motorists on Lake Shore Boulevard East will be able to connect with the DVP northbound via Carlaw Avenue, Eastern Avenue, Broadview Avenue and Queen Street or through other alternative routes within the network.

Stages 2, 3, 6 and 7 of the Ontario Line Lower Don Bridge construction will each require temporary full closure of the DVP in both directions either overnight or, in the case of Stage 3, over a continuous weekend period. Table 4 shows the specific temporary lane closure limits.

Table 4
Temporary Full Closure of DVP (Stages 2, 3, 6 and 7)

Road	Lane	Limit 1	Limit 2
DVP	SB Inside	350 m north of Gerrard St.	DVP-Gardiner on-ramp
DVP	SB Middle	165 m south of Gerrard St.	DVP-Gardiner on-ramp
DVP	SB Outside	30 m north of Queen St.	DVP-Gardiner on-ramp
Don Roadway	SB	DVP	Lake Shore Blvd. East
Gardiner	EB inside	90 m west of Rees St.	DVP-Gardiner off-ramp
Gardiner	EB middle	80 m east of Lower Simcoe St.	DVP-Gardiner off-ramp

Road	Lane	Limit 1	Limit 2
Gardiner	EB outside	110 m west of Bay St.	DVP-Gardiner off-ramp
DVP-Gardiner off-ramp	All lanes	Gardiner	DVP
DVP	NB all lanes	DVP-Gardiner off-ramp	100m south of Eastern Ave.
Don Roadway	NB	Lake Shore Blvd. E.	DVP
Bay-Gardiner on-ramp	All lanes	Bay St.	Gardiner EB
Rees-Gardiner on-ramp	All lanes	Rees St.	Gardiner EB

During the temporary full closure, southbound motorists will exit DVP at Eastern Avenue or upstream off-ramps and continue their journey on the City road network. Eastbound motorists on the F.G. Gardiner Expressway will exit at Jarvis Street or upstream off-ramps. East and westbound motorists on Lake Shore Boulevard East at Don Roadway will be able to connect with the DVP northbound via Carlaw Avenue, Eastern Avenue, Broadview Avenue, and Queen Street or by using alternative city routes.

Stages 4 and 5 will require temporary nightly closures of individual inside and outside lanes in both directions. The limits of these temporary inside and outside lane closures are summarized in Table 5 and 6, respectively.

Table 5
Temporary Closure of Inside Lanes on DVP (Stages 4 and 5)

Road	Lane	Limit 1	Limit 2
Gardiner	EB inside	Parliament St.	DVP-Gardiner off-ramp
DVP-Gardiner off-ramp	EB-to-NB inside	Gardiner	DVP
DVP	NB inside	DVP-Gardiner off-ramp	100 m south of Eastern Ave.
DVP	SB inside	Dundas St.	DVP-Gardiner on-ramp
DVP-Gardiner on-ramp	SB-to-WB inside	DVP	150 m south

Road	Lane	Limit 1	Limit 2
Don Roadway	SB	DVP	Lake Shore Blvd. East

The temporary inside lane closure on the DVP will also impact adjacent segments of the F.G. Gardiner Expressway and Don Roadway. To accommodate the termination taper associated with the southbound inside lane closure, a portion of the south-to-westbound lane of the DVP-F.G. Gardiner Expressway on-ramp will be temporarily closed. Traffic will continue to flow using the adjacent available lane.

Additionally, the temporary closure of the southbound inside lane on the DVP will restrict vehicular access to Don Roadway southbound, between the DVP and Lake Shore Boulevard East. Southbound motorists on the DVP destined to Don Roadway southbound will detour via Eastern Avenue, Cherry Street, and Lake Shore Boulevard East. Alternatively, southbound motorists may continue their journey along the F.G. Gardiner Expressway and detour via Yonge Street, Queens Quay East and Lake Shore Boulevard East.

Table 6
Temporary Closure of Outside Lanes on DVP (Stages 4 and 5)

Road	Lane	Limit 1	Limit 2
DVP	SB outside	50 m north of Eastern Ave.	DVP-Gardiner on-ramp
DVP-Gardiner on-ramp	SB-to-WB outside	DVP	150 m south
Gardiner	EB outside	Parliament St.	DVP-Gardiner off-ramp
DVP-Gardiner off-ramp	EB-to-NB outside	Gardiner	DVP
DVP	NB middle	DVP-Gardiner off-ramp	200 m south of Eastern Ave.
DVP	NB outside	Don Roadway	100 m south of Eastern Ave.
Don Roadway	NB	Lake Shore Blvd. East	DVP

The temporary nightly closure of the northbound middle and outside lanes on the DVP will prohibit northbound traffic movements from Don Roadway, resulting in the temporary nightly closure of Don Roadway northbound, between Lake Shore Boulevard East and the DVP. Eastbound and westbound motorists on Lake Shore Boulevard will

be able to connect with the DVP northbound via Carlaw Avenue, Eastern Avenue, Broadview Avenue and Queen Street or through other alternative routes within the network.

Don Valley Crossing – Minton Portal Slope Stabilization

The Ontario Line Minton Place Portal, shown in Figure 6, will provide transition between the underground and elevated sections of the Ontario Line. Situated along the southern embankment of the DVP, the portal's construction is preceded by the stabilization of the embankment slope to ensure public safety and prevent any ground movements during the construction work. The slope stabilization work involves the installation of soil nails and soil anchors.



Figure 6 – Ontario Line Don Valley Crossing – Minton Place
(Artist's Rendering)

Source: Metrolinx

City Council previously granted approval for the required temporary nightly lane closures along the DVP under Item EX.14.2 adopted in 2024. The approval included up to 47 temporary nightly closures of the northbound outside travel lane and adjacent

shoulder on the DVP and 10 nightly closures of the southbound outside lane and shoulder.

Following contract award, Metrolinx's contractor Leaside Valley Builders (LVB) identified efficiencies that allowed them to revise and reduce the temporary closure requirements. The slope stabilization work will be performed using temporary work platforms placed on the slope, allowing much of the activity to be completed without using live lanes on the DVP.

The revised temporary lane closures for the soil stabilization work are shown below:

- Stage 1 (Completed): Equipment mobilization and site preparation.
- Stage 2 (ongoing): Drilling and installation of soil nails and anchors. This work is ongoing using four temporary nightly closures of the northbound outside lane and shoulder of the DVP.
- Stage 3 (pending approval): Installation of concrete caps and demobilization, requiring 20 temporary nightly closures of the northbound middle and outside lanes with adjacent shoulder, between May 31, 2025 and September 30, 2025.

Traffic Mitigation and Coordination Strategy

City staff are actively coordinating with internal divisions and external partners to align construction of the Lower Don Bridge and Minton Place Portal slope stabilization works with other planned infrastructure projects, special events, and maintenance activities. The objective is to minimize cumulative disruption on the DVP, F.G. Gardiner Expressway, and adjacent arterial roadways, while ensuring safe and efficient delivery of these major transit infrastructure components.

Key project coordination includes:

Eastern/Adelaide Bridge Rehabilitation: This ongoing City project includes rehabilitation of both the Eastern Avenue Bridge and the DVP off-ramp at Richmond Street. The current schedule includes a temporary full closure of the DVP off-ramp from October 2025 to April 2026; however, this timeline is tentative and may shift based on construction progress and coordination with the Waterfront Toronto's Lake Shore Boulevard East project. This timeline potentially overlaps with Stage 3 of the Ontario Line Lower Don Bridge construction, which includes a temporary full weekend closure of the DVP. City staff are coordinating to manage this overlap and exploring opportunities to bundle closures, where feasible.

The full list of Eastern Bridge-related temporary closures in 2026 and 2027 is still under review. However, the project team will work closely with the Metrolinx contractor to reduce cumulative disruption to the DVP corridor.

Waterfront Toronto – Lake Shore Boulevard East (LSBE): This project, led by Waterfront Toronto, includes the realignment of Lake Shore Boulevard East from Don Roadway to Carlaw Avenue, the extension and widening of the Lake Shore Bridge at Metrolinx Ontario Line – LDB & Minton Portal - Temporary Lane Closures on the DVP and Gardiner Expressway

Don River, and the installation of pedestrian and cycling infrastructure, green landscaping, and flood protection features.

Construction activities in June 2025, particularly the temporary full closure of a section of Lake Shore Boulevard East and the DVP ramps at Don Roadway from June 20th to 23rd may overlap with Stage 1 of the Ontario Line Lower Don Bridge works, which includes temporary nightly lane closures on the DVP. To prevent overlap between these two works, Metrolinx has identified a closure window for Stage 1 works, allowing flexibility to adjust the temporary nightly lane closures on the DVP and avoiding overlap with the LSBE activities. Additionally, no new closures associated with the LSBE project will be permitted during the subsequent construction stages of the Ontario Line construction to prevent compounded impacts to the transportation network.

Broadview Eastern Flood Protection (BEFP): This project, led by Waterfront Toronto, involves construction of a flood protection landform and major utility upgrades between Eastern Avenue and the Metrolinx rail corridor. This work includes the removal of the decommissioned Old Eastern Avenue Bridge and supports future projects such as the Broadview Extension and East Harbour Transit Hub.

Several components of BEFP are expected to overlap with the Ontario Line Lower Don Bridge construction and will require close coordination to manage traffic impacts:

- Stage 2 and 3 (Sept. 2025 to Feb. 2026): Temporary full nightly and weekend closures of the DVP for the Ontario Line works may overlap with Eastern Avenue watermain works. Coordination is ongoing to avoid conflicts during this period.
- Stage 4 (August 2026): BEFP requires a temporary closure of the DVP on-ramp at Eastern Avenue. City staff are working to ensure the Ontario Line 4 works are completed in advance of the BEFP-related ramp closure.
- Stage 5 (Nov. 2026): Both DVP on-ramps at Don Roadway and Eastern Avenue may be closed to accommodate the BEFP works. Further coordination to assess cumulative impacts will be required once the closure schedule is confirmed.
- Stages 6 and 7 (Dec. 2026 to June 2027): Temporary full nightly DVP closures under the Ontario Line works may coincide with the BEFP-related temporary closure of the DVP-on-ramps at Don Roadway and Eastern Avenue.

City staff are actively coordinating with Metrolinx, Waterfront Toronto and other project partners to sequence activities and bundle closures, where feasible, reduce disruption to the travelling public. Ongoing inter-agency collaboration remains key to ensuring project delivery and network functionality are maintained during this complex construction period.

Event-Based Adjustments: To accommodate major events with significant traffic implications, nightly construction closures may shift from 11 p.m. to midnight on affected evenings. The 2025 event calendar has been reviewed to inform the construction schedule and mitigate event-related traffic disruption. Overnight lane closures proposed in this report that occur in the run up to, and during, the FIFA 2026 World Cup in Toronto will likewise be carefully managed and no impact on event traffic is expected.

City staff will continue to monitor event calendars in future years to ensure ongoing coordination and conflict avoidance. The approved closure window provides flexibility needed to rearrange the construction schedule and associated temporary lane closures as necessary to align with major events and minimize impacts on traffic flow.

Annual City Maintenance Closures: Opportunities are being explored to bundle the Ontario Line closures with the City's regular DVP and F.G. Gardiner Expressway maintenance windows. These efforts are aimed to reduce the total number of disruptions to the travelling public.

Traffic Impact Mitigation Measures: Except for a single weekend-long full closure required for the bridge launch (Stage 3 of the Lower Don Bridge construction), all construction activities for the Lower Don Bridge and Minton Place Portal works are scheduled to occur during the overnight hours (11 p.m. to 5 a.m.), when traffic volumes are lower. This strategy is intended to reduce traffic diversion, congestion, and travel delays.

To mitigate the impact of the full closure and improve public awareness, Metrolinx will implement a communication and signage strategy that includes:

- Portable Changeable Message Signs (PVMS) deployed throughout the road network to provide advance notice to motorists.
- Digital information of road closures through the Ontario Line project website, social media channels, and traditional media outlets to encourage advance route planning, and use of alternative travel modes.
- Metrolinx's contractors will submit closure information to the City's Road Disruption Activity Reporting System (RoDARS) and notify web-based navigation platforms for timely updates for road users.

All traffic management plans submitted by Metrolinx's contractors will be reviewed by City staff to ensure full compliance with the Ontario Traffic Manual (Book 7) requirements for signage, illumination, and traffic control setup.

During the temporary full closure of the DVP, City staff will also implement additional mitigation measures to manage traffic:

- Activation of the "DVP Closure" traffic signal timing plan at key intersections to help accommodate increased traffic on detour routes.
- Real-time monitoring through the City's Traffic Management Centre with updates provided via overhead changeable message signs as needed.

In addition to traffic mitigation, Metrolinx's contractor will identify major noise and vibration generating construction activities and develop a construction noise and vibration management plan with protocols to deal with the noise and vibration related issues and complaints. Additionally, Metrolinx's contractor will perform construction noise and vibration monitoring to ensure work generated noise and vibration levels comply with established criteria.

Temporary Delegation of Authority

Metrolinx has identified closure windows within which temporary lane closures on the DVP, F.G. Gardiner Expressway, Don Roadway, and associated entry and exit ramps will be implemented to support construction of the Ontario Line Lower Don Bridge and the slope stabilization works at the Minton Place Portal. These timeframes provide the necessary flexibility to adjust the timing of the temporary closures in response to weather conditions, coordination with adjacent infrastructure projects, special events, and unforeseen site constraints. This flexible scheduling approach is essential to maintaining construction momentum while minimizing disruption to the travelling public.

Given the dynamic nature of construction and the potential schedule shifts, requiring staff to return to City Council for approval of any adjustments to closure timing would introduce delays that could significantly impact project delivery. To enable timely decision-making and permit issuance, it is recommended that the General Manager, Transportation Services, be given the delegated authority to temporarily close to vehicular traffic portions of the Don Valley Parkway and F.G. Gardiner Expressway, including entry and exit roadway ramps, despite Section 937-4 of Chapter 937, as required for the purposes of the construction of the Don Valley Crossing and OL Lower Don Bridge, as outlined in the recommendations.

It is further recommended that, in exercising this authority, the General Manager be exempt from the requirements under Section 937-5 of Chapter 937, which include notifying the local Ward Councillor and reporting on proposed closures upon request. This exemption will ensure the City can respond promptly to evolving project conditions.

City Council has previously approved a similar delegation of authority for temporary lane closures on the DVP, F.G. Gardiner Expressway and Don Roadway under Items EX4.9 and EX14.2. Comparable delegations have also been granted for other major Metrolinx transit projects, including the Scarborough Subway Extension, Eglinton Crosstown West Extension, and Yonge North Subway Extension. As with those projects, City staff will continue to engage regularly with local Councillors and their offices to provide advance notice of temporary closures, project updates, and coordination efforts.

This temporary delegation of authority will enable Transportation Services staff to focus on critical planning, technical review, and inter-agency coordination activities, ensuring that traffic control, road safety, and construction staging are effectively managed. The ability to respond nimbly to changing conditions will support the successful and efficient delivery of these essential Ontario Line infrastructure components.

Communication and Community Engagement

Metrolinx will implement a comprehensive Communication Plan to proactively engage the public, provide timely construction updates, respond to concerns, and minimize community impacts during the construction of the Ontario Lower Don Bridge and the Minton Place Portal slope stabilization works within the Don Valley Crossing.

The Communication Plan will include:

- Regular project updates via the Ontario Line project website, social media, television, e-newsletters, and construction notices with details on upcoming activities, timelines, expected impacts, and mitigation measures.
- Clear communication on traffic and noise impacts, including associated mitigation strategies, within the zone of influence surrounding the DVP and adjacent roadways.
- 24/7 communication channels, including dedicated contact number and email address during active construction periods.
- Presentations and discussions at the regular Construction Liaison Committee meetings, where Metrolinx will share updates and receive input from local stakeholders.

To ensure timely response to public concerns, Metrolinx and its contractor will provide a dedicated phone number and email address to be shared with the City's 311 service. Complaints received through 311 or through local Councillor's offices will be directed to this contact, and all inquiries will be logged, tracked and addressed by Metrolinx project team in collaboration with City staff.

Metrolinx will work closely with local Councillors to review specific construction activities, including lane closure schedules and traffic management plans. City staff will hold regular one-on-one briefings with Councillors to provide updates, receive feedback, and coordinate responses to constituent concerns. Ongoing liaison between City staff and Metrolinx will continue throughout the duration of construction to ensure alignment, transparency, and responsiveness to community needs.

CONTACT

Ashley Curtis, Deputy General Manager, Transportation Services
Ashley.Curtis@toronto.ca, Tel: 416-392-0170

SIGNATURE

Barbara Gray
General Manager, Transportation Services