

Traffic Calming (Speed Humps) - Somerville Avenue

Date: January 31, 2025

To: Etobicoke York Community Council

From: Director, Traffic Management, Transportation Services

Wards: Ward 5, York South-Weston

SUMMARY

This staff report is about a matter that Community Council has delegated authority from City Council to make a final decision.

Transportation Services has reviewed the need for speed humps on Somerville Avenue, between Weston Road and Gilmour Crescent. The assessment indicates the warrant criteria as set out in the updated Traffic Calming Policy has not been satisfied. Therefore, staff do not recommend the installation of speed humps on Somerville Avenue.

RECOMMENDATIONS

The Director, Traffic Management, Transportation Services recommends that:

1. Etobicoke York Community Council not authorize the installation of speed humps on Somerville Avenue, between Weston Road and Gilmour Crescent.

FINANCIAL IMPACT

There are no financial impacts resulting from the adoption of the recommendation in this report.

If Etobicoke York Community Council amends the recommendation in this report and authorizes the installation of speed humps on Somerville Avenue, the estimated cost of installing two speed humps is \$8,000. Funding would be subject to availability and competing priorities within the Transportation Services 2025 Capital Budget.

DECISION HISTORY

This report addresses a new initiative.

COMMENTS

Transportation Services received a request from the Ward Councillor, on behalf of area residents, to investigate the feasibility of installing speed humps on Somerville Avenue, between Weston Road and Gilmour Crescent. The residents are concerned that motorists travel at a high rate of speed on Somerville Avenue.

Existing Conditions

Somerville Avenue is characterized by the following conditions:

- It is a two-lane, east-west, local roadway
- It operates two-way traffic on a pavement width of approximately 8.5 metres
- The daily two-way traffic volume is approximately 97 vehicles
- The speed limit is 30 km/h
- Heavy trucks are prohibited at all times.
- There is no Toronto Transit Commission service provided
- There are sidewalks located on both sides of the street.

The land use in the area consists of detached and semi-detached residential dwellings. This subject section of Somerville Avenue is not within a designated community safety zone.

A map of the area and locations of the requested speed humps is included in Attachment 2.

Study Results

In order for speed humps to be recommended on a street, the eligibility and warrant criteria as set out in the City of Toronto's updated Traffic Calming Policy must be satisfied. The eligibility criteria include the road classification, the presence of sidewalks, maximum traffic volume, the road grade and the impacts to emergency services and transit. The warrant criteria include the block length and the operating speeds. Details of the eligibility and warrant criteria are included in Attachment 1.

As part of the assessment of the warrant criteria, a vehicle speed and volume study was conducted on Somerville Avenue, between Weston Road and Gilmour Crescent for three consecutive days between Tuesday, September 24, 2024 and Thursday September 26, 2024.

Study results on Somerville Avenue disclosed the following:

- 24-hour total vehicle volume is 97 vehicles
- The block length from Weston Road to Gilmour Crescent is approximately 166 metres.

- The operating speed, which is the speed at which 85 percent of traffic is travelling at or below, was observed at 29 km/h
- The 95th percentile speed, which is the speed at which 95 percent of traffic is travelling at or below, was observed at 36 km/h

Based on the study results, the overall warrant for traffic calming was not met for the following reasons:

- Minimum speed: The operating speed must be a minimum of 8 km/h over the warranted speed limit. The operating speed of 29 km/h is 9 km/h under the minimum required speed of 38 km/h. The 95th percentile speed must be a minimum of 15 km/h over the warranted speed limit. The 95th percentile speed of 36 km/h is 9 km/h under the minimum required speed of 45 km/h.

The overall investigation concluded that the eligibility and warrant criteria as outlined in the updated Traffic Calming Policy has not been satisfied. Therefore, staff do not recommend the installation of speed humps on Somerville Avenue.

Alternate Recommendations

If, despite the findings above, Etobicoke York Community Council decides to proceed with installing speed humps on Somerville Avenue, between Weston Road and Gilmour Crescent, it may approve the following:

1. Etobicoke York Community Council authorize the installation of speed humps on Somerville Avenue, between Weston Road and Gilmour Crescent.
2. Etobicoke York Community Council direct the City Solicitor to prepare a by-law to alter the roadway for the installation of two speed humps on Somerville Avenue, between Weston Road and Gilmour Crescent, generally as shown on Attachment 2, Drawing TC-436, dated Dec 2024, attached to the report titled "Traffic Calming (Speed Humps) - Somerville Avenue" from the Director, Traffic Management, Transportation Services.

The estimated cost for installing two speed humps on Somerville Avenue is \$8,000. The installation of speed humps on Somerville Avenue would be subject to availability and competing priorities within the Transportation Services 2025 Capital Budget.

Relative Priority and Other Impacts

In the event that the number of approved requests for roadway traffic calming measures (speed humps or speed cushions) exceed the budget allocated for installation, funding for approved installations will be prioritized using a Prioritization Score. This score is made up of a Quantitative Score and a Qualitative Score.

The Quantitative Score is based on the results of the data collection, including travel speeds and traffic volumes to prioritize locations with higher vehicle speeds and volumes.

The Qualitative Score includes:

- Collision history to prioritize locations with a history of serious injury or fatal collisions and those involving a pedestrian or cyclist
- Equity to prioritize equity-deserving communities with a high-concentration of priority populations and those that are transportation disadvantaged
- Expected presence of vulnerable road users (elderly population, school children and pedestrians, including transit riders) to prioritize locations with a higher risk of fatal and serious injury collisions

The Quantitative and Qualitative Scores are averaged to provide the complete Prioritization Score. Somerville Avenue, between Weston Road and Gilmour Crescent, scored 23 ranking points out of a possible 100.

No alterations to parking regulations would be required, nor would the number of parking spaces be affected by the installation of speed humps. Installation of speed humps would have minimal effect on winter services, street cleaning and garbage collection.

Consultation with emergency services (Toronto Police Service, Toronto Fire Services and Toronto Paramedic Services) is required to ensure that the design and layout of a traffic calming proposal does not unduly affect their operations. Emergency services were advised of this proposal.

Toronto Paramedic Services have provided their comments. A copy of their full response is included in Attachment 3. Comments have not been received back at the time of writing this report from Toronto Police Service, and Toronto Fire Services. Installing speed humps will result in slower operating speeds for all vehicles, including emergency service vehicles.

The Ward Councillor has been advised of the recommendations in this report.

CONTACT

Shawn Dillon, Manager Traffic Operations (Area 2), Transportation Services
416-394-8409, Shawn.Dillon@toronto.ca

SIGNATURE

Roger Browne, M.A.Sc., P. Eng.
Director, Traffic Management, Transportation Services

ATTACHMENTS

Attachment 1: Traffic Calming Warrant - Somerville Avenue

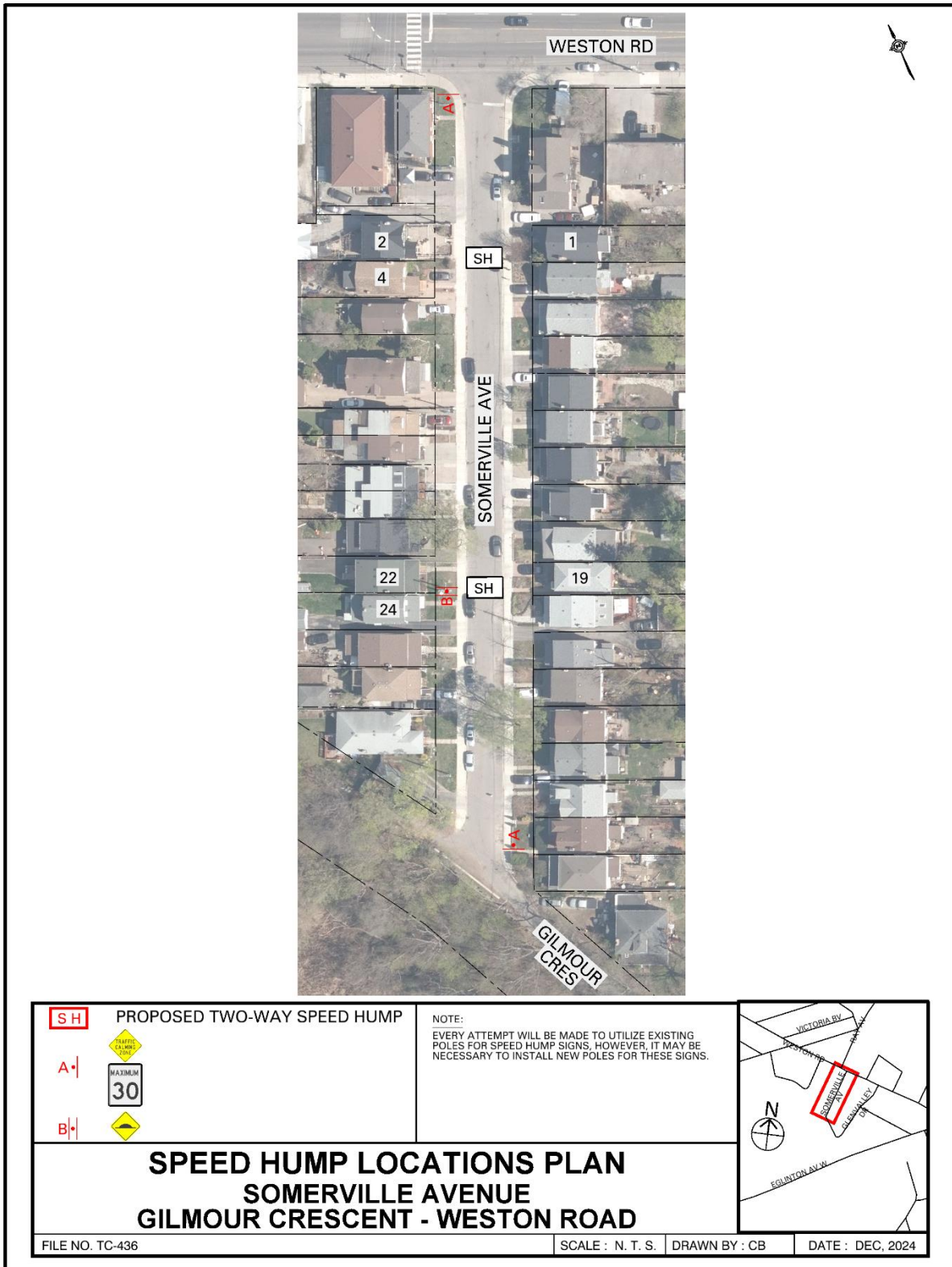
Attachment 2: Speed Hump Locations Plan - Somerville Avenue

Attachment 3: Letter from Toronto Paramedic Services, dated January 15, 2025

Attachment 1: Traffic Calming Warrant - Somerville Avenue

Criteria		Requirement	Warrant Satisfied?
Community Support		A direct request from the Ward Councillor OR identified by Transportation Services in consultation with the Ward Councillor	Yes
Eligibility Criteria	Road Classification	Classified as a local or collector roadway, according to the Toronto Road Classification System	Yes
	Sidewalks	Presence of a sidewalk on at least one side of a local roadway and both sides of a collector roadway is preferred but not required	Yes
	Traffic Volume	Maximum average daily traffic volume of less than 8,000 vehicles per day	Yes
	Road Grade	Maximum roadway grade of up to 5%, can be considered in locations where the road grade is between 5% and 8% with additional review	Yes
	Emergency Services	No significant impacts on emergency services, including Toronto Fire, Paramedic and Police Services	Yes
	Transit Services	No significant impacts to regularly scheduled Toronto Transit Commission (TTC) services	N/A
Warrant Criteria	Minimum Block Length	Minimum block length of 120 metres based on the measured distance from centre to centre of controlled intersections AND	Yes (166 m)
	85th percentile speed	Minimum 85th percentile speed of 8 km/h over the warranted speed limit OR	No (9 km/h under)
	95th percentile speed	Minimum 95th percentile speed of 15 km/h over the warranted speed limit	No (9 km/h under)

Attachment 2: Speed Hump Locations Plan - Somerville Avenue



Attachment 3: Letter from Toronto Paramedic Services, dated January 15, 2025

RE: Comments for Somerville Avenue Traffic Calming Speed Humps Installations



EMS Planning

To Ahmed Muse

Cc Jennifer Chung; Atif Sharif; EMS Planning; EMS Planning



Reply

Reply All

Forward



Wed 01/15/2025 7:19 AM

We have received and reviewed the proposal for installation of speed humps on Somerville Avenue, between Weston Road and Gilmour Crescent, with the following comments:

The installation of speed humps on Somerville Avenue, between Weston Road and Gilmour Crescent, will impact response and transport times for residents that reside on the roadway speed humps are installed. Impacts may extend to community members if Somerville Avenue, between Weston Road and Gilmour Crescent, serves access to other roadways. It is important that the applicant understands that the installation of traffic calming devices will reduce the speed that emergency vehicles travel when responding to emergencies on roadways where they are installed.

Toronto Paramedic Services is supportive of community initiatives that improve the safety of all citizens of, and visitors to, the City of Toronto. Traffic and pedestrian safety are key components of a healthy neighbourhood, and we endeavour to support the wishes of the community to implement measures to improve upon these components.