

Traffic Calming (Speed Cushions) - Thistle Down Boulevard

Date: March 17, 2025

To: Etobicoke York Community Council

From: Director, Traffic Management, Transportation Services

Wards: Ward 1, Etobicoke North

SUMMARY

This staff report is about a matter that Community Council has delegated authority from City Council to make a final decision.

Transportation Services is recommending the installation of speed cushions on Thistle Down Boulevard, between Albion Road and Thistle Down Boulevard. Staff's assessment indicates the criteria as set out in the updated Traffic Calming Policy has been satisfied. Therefore, speed cushions should be installed on Thistle Down Boulevard.

A companion report, titled "Parking Amendments - Thistle Down Boulevard" outlines the parking amendments required to be installed in conjunction with the proposed speed cushions in this report.

RECOMMENDATIONS

The Director, Traffic Management, Transportation Services recommends that:

1. Etobicoke York Community Council authorize the installation of speed cushions on Thistle Down Boulevard, between Albion Road and Thistle Down Boulevard.
2. Etobicoke York Community Council direct the City Solicitor to prepare a by-law to alter the roadway for the installation of 11 speed cushions on Thistle Down Boulevard, between Albion Road and Thistle Down Boulevard, generally as shown on Attachment 2, Drawing TC-360, TC-361, TC-362, TC-363, TC-364 dated September 2024, attached to the report entitled "Traffic Calming (Speed Cushions) - Thistle Down Boulevard" from the Director, Traffic Management, Transportation Services.
3. Subject to approval of Recommendations 1 and 2 above, Etobicoke York Community Council reduce the speed limit from 40 km/h to 30 km/h on Thistle Down Boulevard, between Albion Road and Thistle Down Boulevard, in conjunction with the installation of speed cushions.

4. Subject to Etobicoke York Community Council approval of Recommendation 3 above, Etobicoke York Community Council authorize the amendment of Schedule XLV (Part 1) to City of Toronto Municipal Code Chapter 950, Traffic and Parking, to remove Thistle Down Boulevard (entire length), from being excluded from the Designated Area such that this portion of highway will then be included within the corresponding designated area in Column 1 in Schedule XLV (Part 1).

FINANCIAL IMPACT

The estimated cost for installing 11 speed cushions on Thistle Down Boulevard is \$88,000.00. Funding is subject to availability and competing priorities within the Transportation Services 2025 Capital Budget.

DECISION HISTORY

This report addresses a new initiative.

COMMENTS

Transportation Services received a petition from the Ward Councillor, signed by residents of Thistle Down Boulevard, requesting to investigate the feasibility of installing speed cushions on Thistle Down Boulevard, between Albion Road and Thistle Down Boulevard. The residents are concerned that motorists travel at a high rate of speed on Thistle Down Boulevard.

Existing Conditions

Thistle Down Boulevard is characterized by the following conditions:

- It is a two-lane, north/south/east/west, collector roadway
- It operates two-way traffic on a pavement width of approximately 8.5 metres
- The daily two-way traffic volume is between 800 and 4,000 vehicles
- The speed limit is 40 km/h
- Heavy trucks are prohibited at all times
- There is Toronto Transit Commission (TTC) service provided by the 118 bus
- There are sidewalks located on both sides of the street

The land use in the area consists of detached residential dwellings. Saint-Noël-Chabanel Catholic Elementary School is located west of the intersection of Albion Road and Thistle Down Boulevard. St. John Vianney Catholic School is located south of the intersection of Thistle Down Boulevard and Judhaven Road. The sections of Thistle Down Boulevard, between Albion Road and Barkwin Drive and between Deanlea Court and Bondhead Place, are designated Community Safety Zones.

A map of the area and proposed locations of the speed cushions is included in Attachment 2.

Study Results

As part of the assessment of the warrant criteria, a vehicle speed and volume study was conducted on Thistle Down Boulevard on April 23, 2024.

The study results on Thistle Down Boulevard disclosed the following:

- 24-hour total vehicle volume is between 800 - 4,000 vehicles
- The block length from Albion Road to Thistle Down Boulevard is approximately 2 kilometres
- The operating speed, which is the speed at which 85 percent of traffic is travelling at or below, was observed at 48 km/h
- The 95th percentile speed, which is the speed at which 95 percent of traffic is travelling at or below, was observed at 53 km/h

Based on the study results, Thistle Down has satisfied the warrant criteria for both minimum block length and minimum vehicle speed. The block length was greater than 120 metres and the operating speed is 8 km/h over the warranted speed of 40 km/h.

The overall investigation concluded that the eligibility and warrant criteria as outlined in the updated Traffic Calming Policy has been satisfied. Therefore, staff recommend the installation of speed cushions on Thistle Down Boulevard.

Relative Priority and Other Impacts

In the event that the number of approved requests for roadway traffic calming measures exceed the budget allocated for installation, funding for approved installations will be prioritized using a Prioritization Score. This score is made up of a Quantitative Score and a Qualitative Score.

The Quantitative Score is based on the results of the data collection, including travel speeds and traffic volumes to prioritize locations with higher vehicle speeds and volumes.

The Qualitative Score includes:

- Collision history to prioritize locations with a history of serious injury or fatal collisions and those involving a pedestrian or cyclist
- Equity to prioritize equity-deserving communities with a high-concentration of priority populations and those that are transportation disadvantaged
- Expected presence of vulnerable road users (elderly population, school children and pedestrians, including transit riders) to prioritize locations with a higher risk of fatal and serious injury collisions

The Quantitative and Qualitative Scores are averaged to provide the complete Prioritization Score. Thistle Down Boulevard, between Albion Road and Thistle Down Boulevard, scored 31 ranking points out of a possible 100.

In conjunction with the proposed speed cushions on Thistle Down Boulevard between Albion Road and Thistle Down Boulevard, parking will be required to be prohibited at all

times on the inner loop portion of Thistle Down Boulevard. A companion report titled "Parking Amendments - Thistle Down Boulevard" outlines these changes.

The TTC has been advised of the recommendations in this report and has no objections to the proposed speed cushions.

Consultation with emergency services (Toronto Police Service, Toronto Fire Services and Toronto Paramedic Services) is required to ensure that the design and layout of a traffic calming proposal does not unduly affect their operations. Emergency services were advised of this proposal.

Comments have not been received back at the time of writing this report from Toronto Police Service, Toronto Paramedic Services or Toronto Fire Services. Installing speed cushions will result in slower operating speeds for all vehicles, including emergency service vehicles.

The Ward Councillor has been advised of the recommendations in this report.

CONTACT

Shawn Dillon, Manager Traffic Operations (Area 2), Transportation Services
416-394-8409, Shawn.Dillon@toronto.ca

SIGNATURE

Roger Browne, M.A.Sc., P. Eng.
Director, Traffic Management, Transportation Services

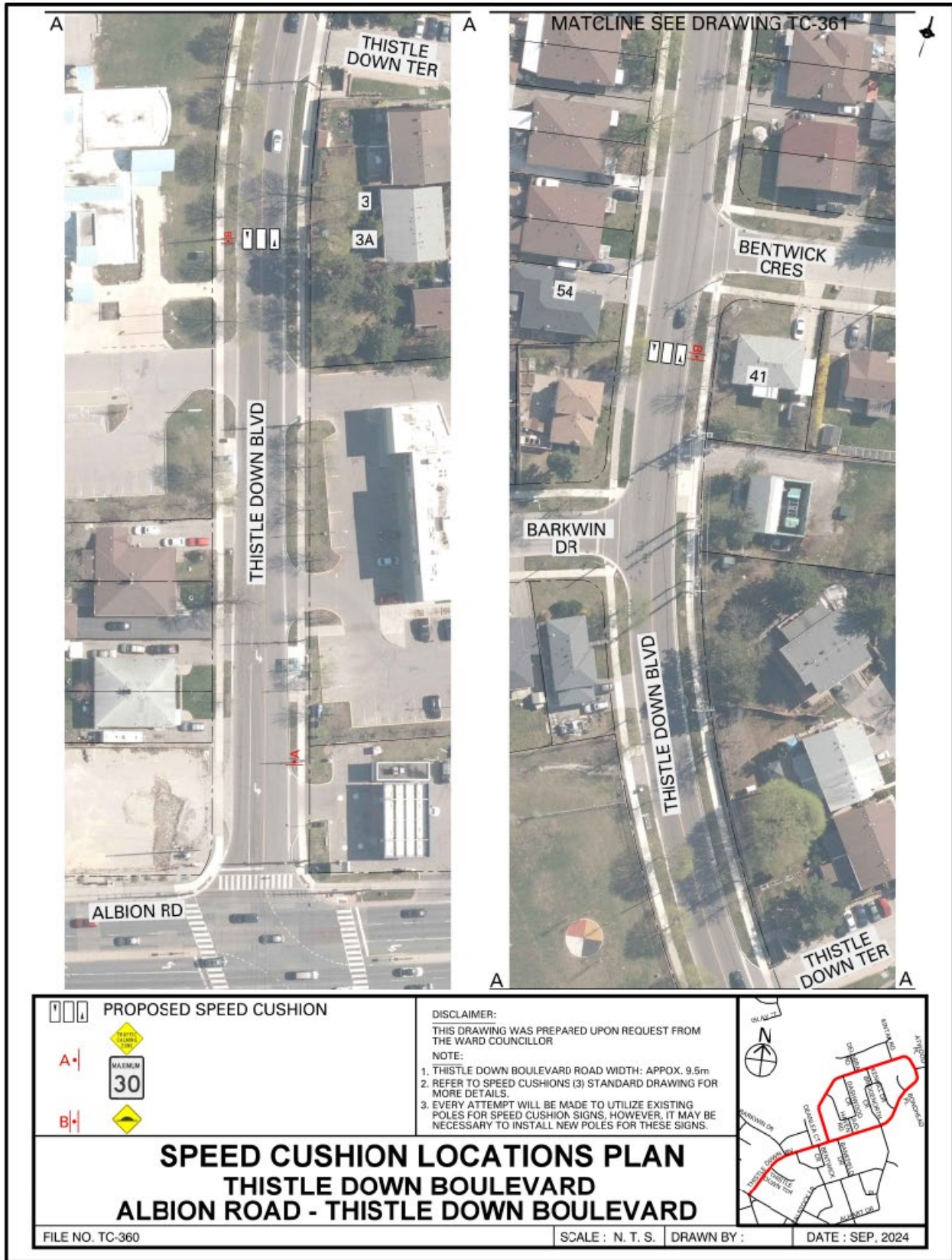
ATTACHMENTS

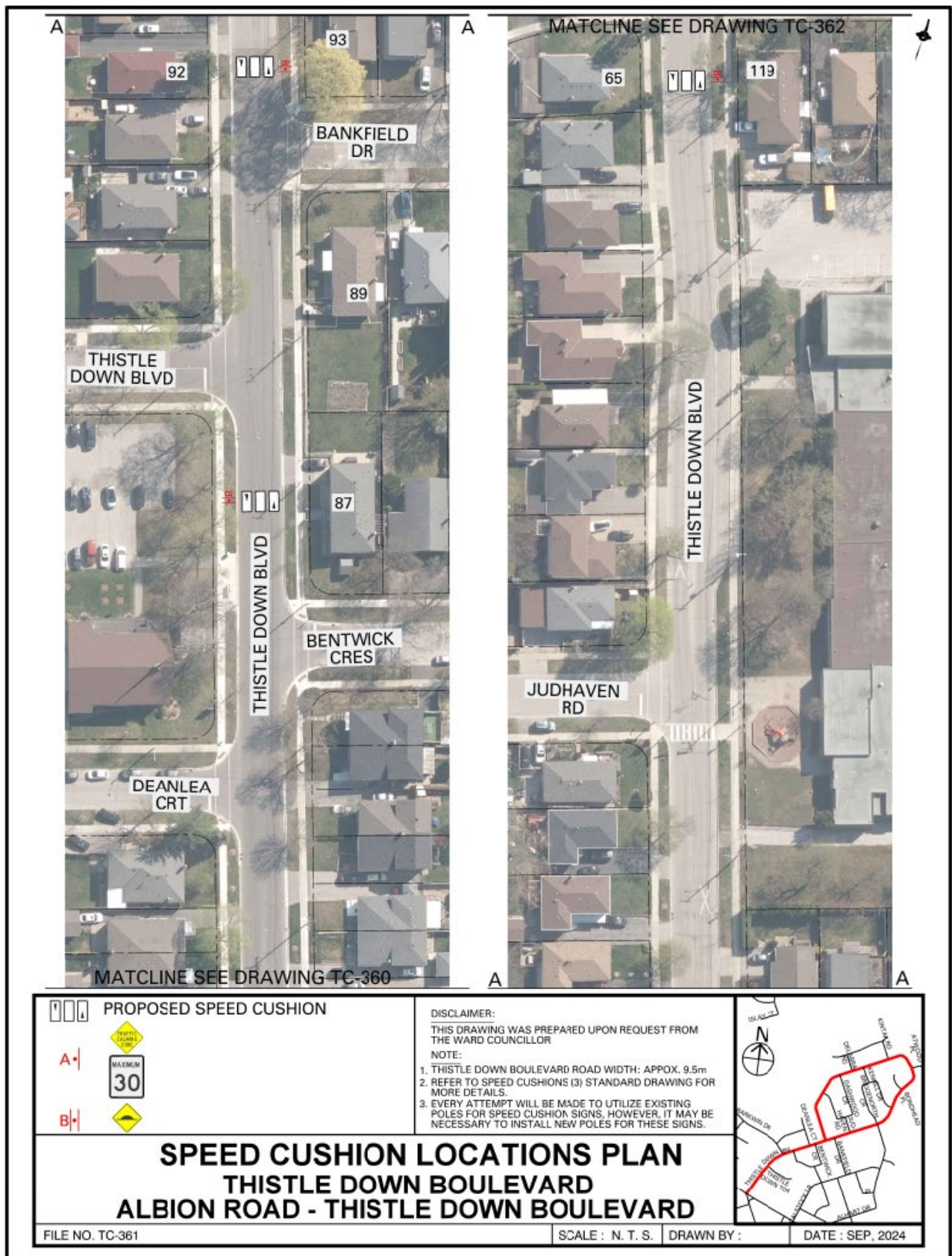
Attachment 1: Traffic Calming Warrant - Thistle Down Boulevard
Attachment 2: Speed Cushion Locations Plan - Thistle Down Boulevard

Attachment 1: Traffic Calming Warrant - Thistle Down Boulevard

Criteria		Requirement	Warrant Satisfied?
Community Support		A direct request from the Ward Councillor OR identified by Transportation Services in consultation with the Ward Councillor	Yes
Eligibility Criteria	Road Classification	Classified as a local or collector roadway, according to the Toronto Road Classification System	Yes
	Sidewalks	Presence of a sidewalk on at least one side of a local roadway and both sides of a collector roadway is preferred but not required	Yes
	Traffic Volume	Maximum average daily traffic volume of less than 8,000 vehicles per day	Yes
	Road Grade	Maximum roadway grade of up to 5%, can be considered in locations where the road grade is between 5% and 8% with additional review	Yes
	Emergency Services	No significant impacts on emergency services, including Toronto Fire, Paramedic and Police Services	Yes
	Transit Services	No significant impacts to regularly scheduled Toronto Transit Commission (TTC) services	Yes
Warrant Criteria	Minimum Block Length	Minimum block length of 120 metres based on the measured distance from centre to centre of controlled intersections AND	Yes (2 km)
	85th percentile speed	Minimum 85th percentile speed of 8 km/h over the warranted speed limit OR	Yes (8 km/h)
	95th percentile speed	Minimum 95th percentile speed of 15 km/h over the warranted speed limit	No (12 km/h)

Attachment 2: Speed Cushion Locations Plan - Thistle Down Boulevard











 <p>PROPOSED SPEED CUSHION</p> <p>A </p> <p>B </p> <p></p>	<p>DISCLAIMER: THIS DRAWING WAS PREPARED UPON REQUEST FROM THE WARD COUNCILLOR</p> <p>NOTE:</p> <ol style="list-style-type: none"> 1. THISTLE DOWN BOULEVARD ROAD WIDTH: APPROX. 9.5m 2. REFER TO SPEED CUSHIONS (3) STANDARD DRAWING FOR MORE DETAILS. 3. EVERY ATTEMPT WILL BE MADE TO UTILIZE EXISTING POLES FOR SPEED CUSHION SIGNS, HOWEVER, IT MAY BE NECESSARY TO INSTALL NEW POLES FOR THESE SIGNS. 	
<p>SPEED CUSHION LOCATIONS PLAN THISTLE DOWN BOULEVARD ALBION ROAD - THISTLE DOWN BOULEVARD</p>		
<p>FILE NO. TC-364</p>	<p>SCALE : N. T. S. DRAWN BY :</p>	<p>DATE : SEP, 2024</p>