





Transit Signal Priority

Anonymous

Apr 15, 2020 - 16:05

Why will Metrolinx prioritize left turning drivers using advance left turn signals over people using the LRT? Since more people will be moved by the LRT would it not make sense to prioritize its movement?

25 16



Answer

Metrolinx

Apr 16, 2020 - 09:25

There is limited signal priority permitted by the City of Toronto. The limited priority for the Eglinton Crosstown is an ability to call for an extended green for the through movements going east/west. In general, light rail vehicles will follow the road signals — stopping at reds, waiting for the advance turns to finish and then proceeding on green.

20 31

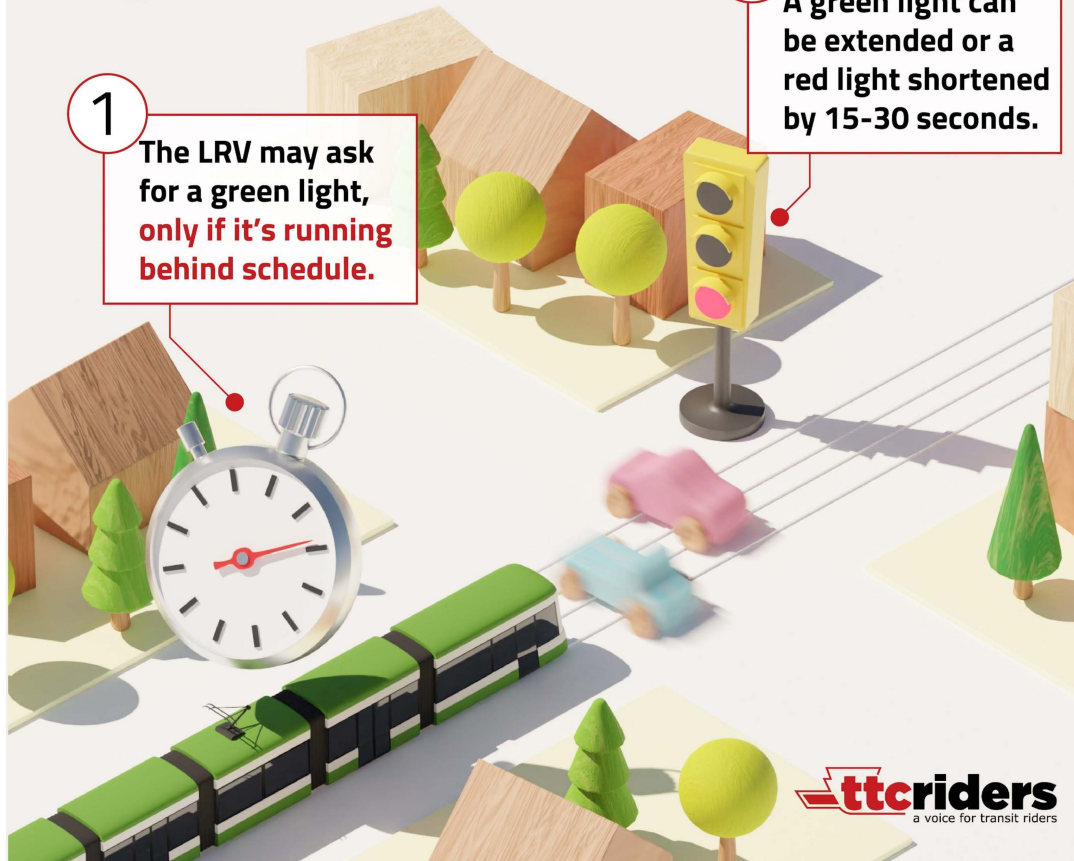
Limited Active Transit Signal Priority

1

The LRV may ask for a green light, **only if it's running behind schedule.**

2

A green light can be extended or a red light shortened by 15-30 seconds.



Full Active Transit Signal Priority

1

Light Rail Vehicle (LRV) transmits its speed and location at all times.

2

The traffic signal dynamically adjusts to provide a wave of green lights!