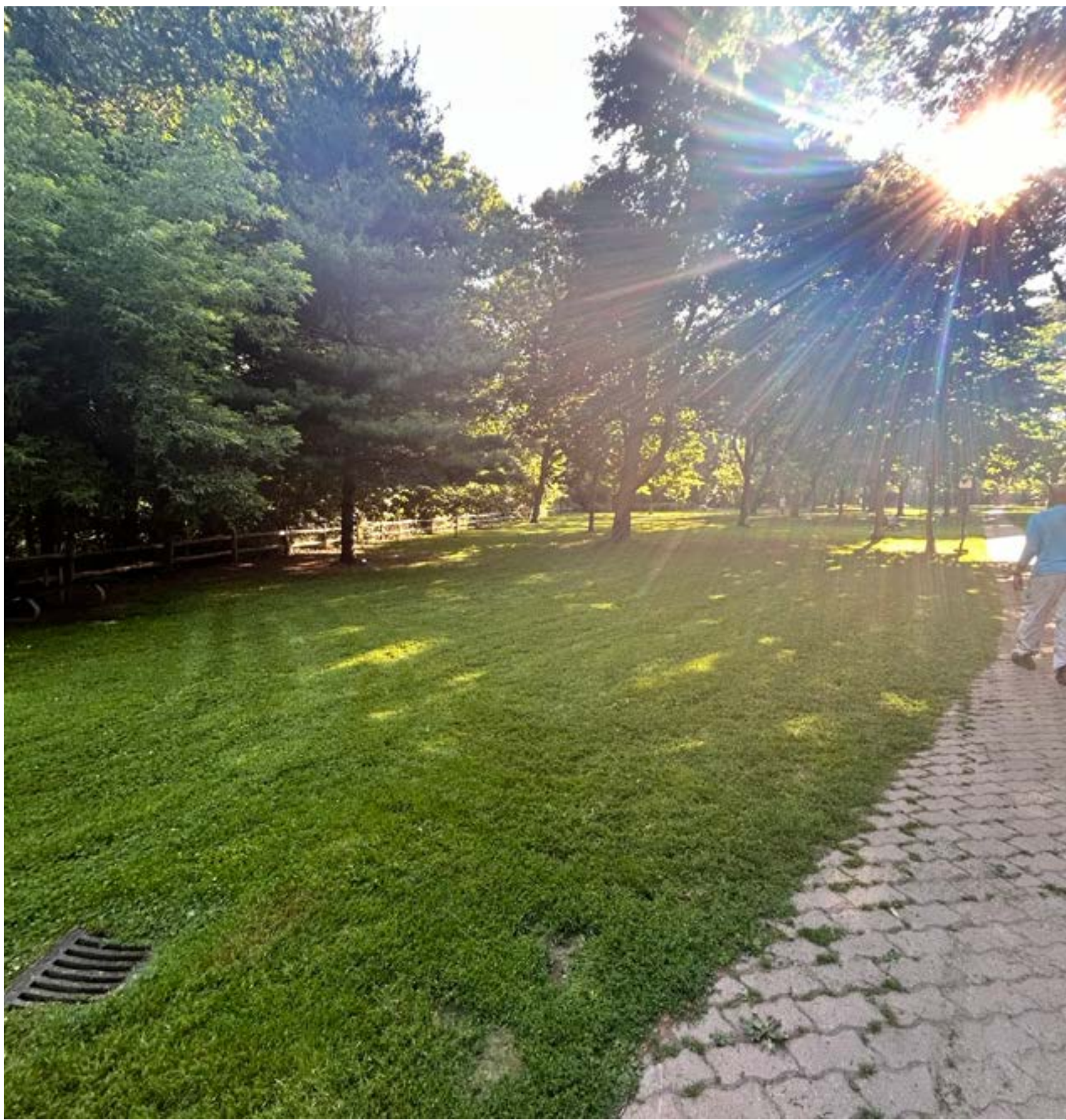




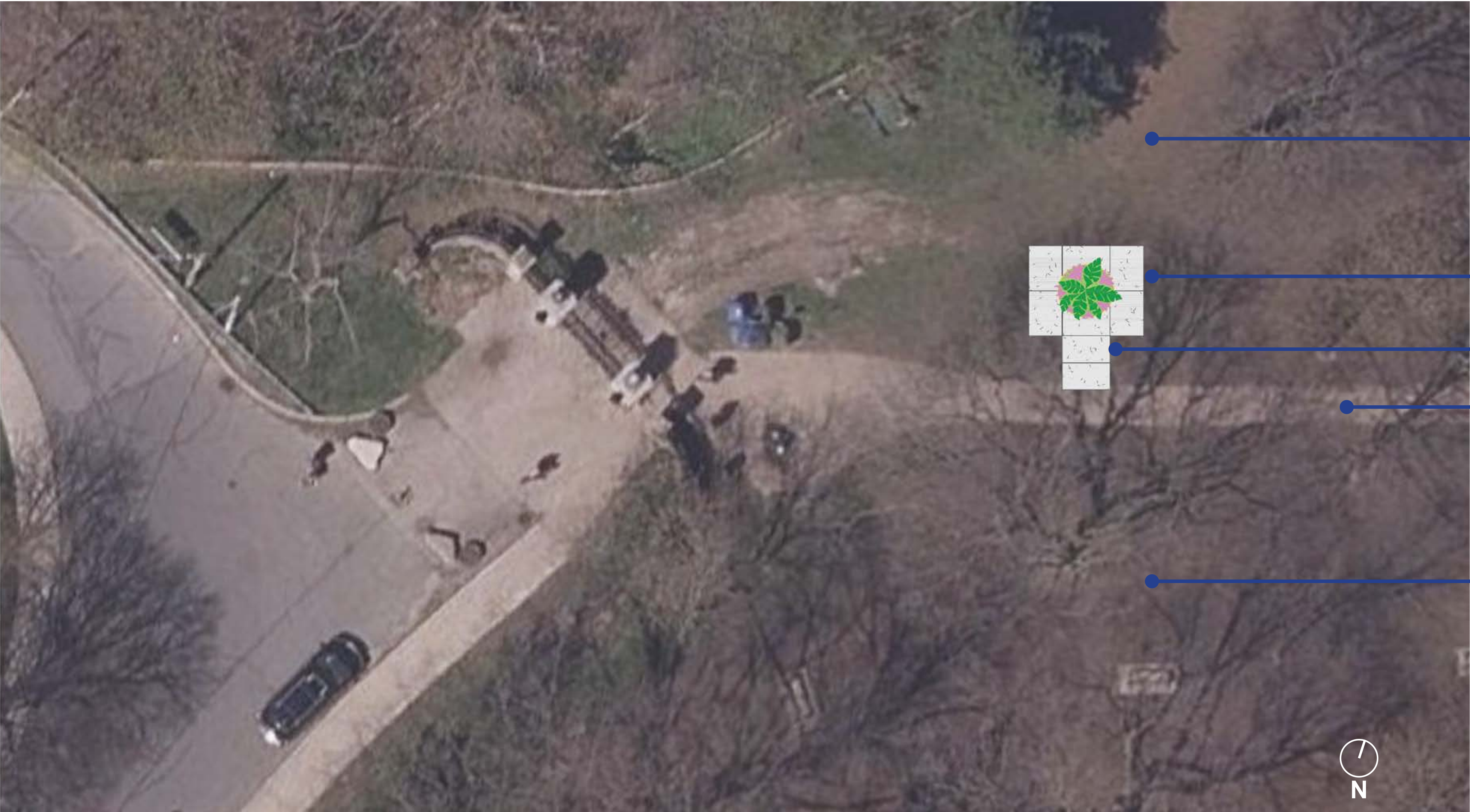
EXISTING PARTIAL PARK AERIAL - HISTORICAL GATES ENTRANCE (N.T.S.)



VIEW 1 - LOOKING EAST



VIEW 2 - LOOKING NORTH-EAST



EXISTING GREEN SPACE

NEW 10' X 12' CONCRETE PAD

NEW 5' WIDE CONCRETE WALKWAY

EXISTING WALKWAY

EXISTING GREEN SPACE

ENLARGED CONCEPT PLAN FOR THE DAFOE URN



PRECEDENT IMAGE OF CONCRETE



PRECEDENT IMAGE OF RAISED CONCRETE

PROPOSED GENERAL IMPROVEMENTS

Urn placement close to gates on the north side, new 5' concrete walkway (option urn to be raised), 10'x12' concrete pad, plaque to be installed in concrete walkway (by others)