

Parking Amendments - Bayview Ridge

Date: August 29, 2025

To: North York Community Council

From: Director, Enforcement and Streets Management, Transportation Services

Wards: Ward 15 - Don Valley West

SUMMARY

This staff report is about a matter that Community Council has delegated authority from City Council to make a final decision.

Transportation Services is recommending that the existing stopping prohibition, in effect from 8:00 a.m. to 6:00 p.m., Monday to Friday, on the south side of Bayview Ridge, between Bayview Avenue and a point 80 metres west, be amended to a standing prohibition, in effect from 8:00 a.m. to 9:00 a.m. and 3:00 p.m. to 4:00 p.m., Monday to Friday. This will result in the unsigned statutory three-hour parking limit being in effect during the midday while the proposed standing prohibition will deter all-day parking, since the three hour limit is enforced only by request. Also, a stopping prohibition in effect at all times is recommended on both sides of Bayview Ridge, between Bayview Avenue and a point 15 metres east, to maintain a clear passage for vehicles.

RECOMMENDATIONS

The Director, Enforcement and Streets Management, Transportation Services recommends that:

1. North York Community Council rescind the existing stopping prohibition in effect from 8:00 a.m. to 6:00 p.m., Monday to Friday, on both sides of Bayview Ridge, between Bayview Avenue and a point 118 metres west.
2. North York Community Council approve a stopping prohibition in effect from 8:00 a.m. to 6:00 p.m., Monday to Friday, on the north side of Bayview Ridge, between a point 15 metres west of Bayview Avenue and a point 103 metres further west.
3. North York Community Council approve a stopping prohibition in effect from 8:00 a.m. to 6:00 p.m., Monday to Friday, on the south side of Bayview Ridge, between a point 80 metres west of Bayview Avenue and a point 38 metres further west.

4. North York Community Council approve a stopping prohibition in effect at all times on both sides of Bayview Ridge, between Bayview Avenue and a point 15 metres west.

5. North York Community Council approve a standing prohibition, in effect from 8:00 a.m. to 9:00 a.m. and 3:00 p.m. to 4:00 p.m., Monday to Friday, on the south side of Bayview Ridge, between a point 15 metres west of Bayview Avenue and a point 65 metres further west east of Bayview Avenue.

FINANCIAL IMPACT

The signage costs associated with the proposed amendments are approximately \$1,000. Funding is available within the Transportation Services 2025 Operating Budget.

DECISION HISTORY

This report addresses a new initiative.

COMMENTS

The Ward Councillor, on behalf of residents of Bayview Ridge, requested that three-hour parking be allowed on the south side of Bayview Ridge, during the midday on weekdays and standing be prohibited during the peak periods. This is to allow for visitor parking while the proposed peak period standing prohibition will deter all-day parking.

Existing Conditions

Bayview Ridge is characterized by the following conditions:

- It is a two-lane, east-west local roadway
- It operates two-way traffic on a pavement width of approximately 8.5 metres
- The daily two-way traffic volume is approximately 700 vehicles
- The speed limit is 40 km/h
- Heavy trucks are prohibited at all times
- There is no TTC service provided
- There are sidewalks located on both sides of the street.
- There are detached homes on both sides of the street and townhomes on the northwest corner of Bayview Ridge and Bayview Avenue

Stopping is prohibited from 8:00 a.m. to 6:00 p.m., Monday to Friday, on both sides of Bayview Ridge, between Bayview Avenue and a point 118 metres west. The unsigned statutory three-hour maximum parking limit is in effect on both sides of the street, further west.

Proposed Changes

Amending the existing stopping prohibition on the south side of Bayview Ridge, between Bayview Avenue and a point 80 metres east, to a standing prohibition, in effect from 8:00 a.m. to 9:00 a.m. and 3:00 p.m. to 4:00 p.m., Monday to Friday, will provide approximately eight parking spaces. The unsigned statutory three-hour parking limit will be in effect during the midday while the proposed standing prohibition will deter all-day parking. Prohibiting stopping at all times on both sides of Bayview Ridge, within 15 metres of Bayview Avenue, will maintain a clear passage for vehicles.

A map of the area and proposed parking amendments is included in Attachment 1.

The Ward Councillor has/have been advised of the recommendations of this staff report.

CONTACT

Shawn Dillon, Manager Traffic Operations (Area 2), Transportation Services, 416-394-8409, Shawn.Dillon@toronto.ca

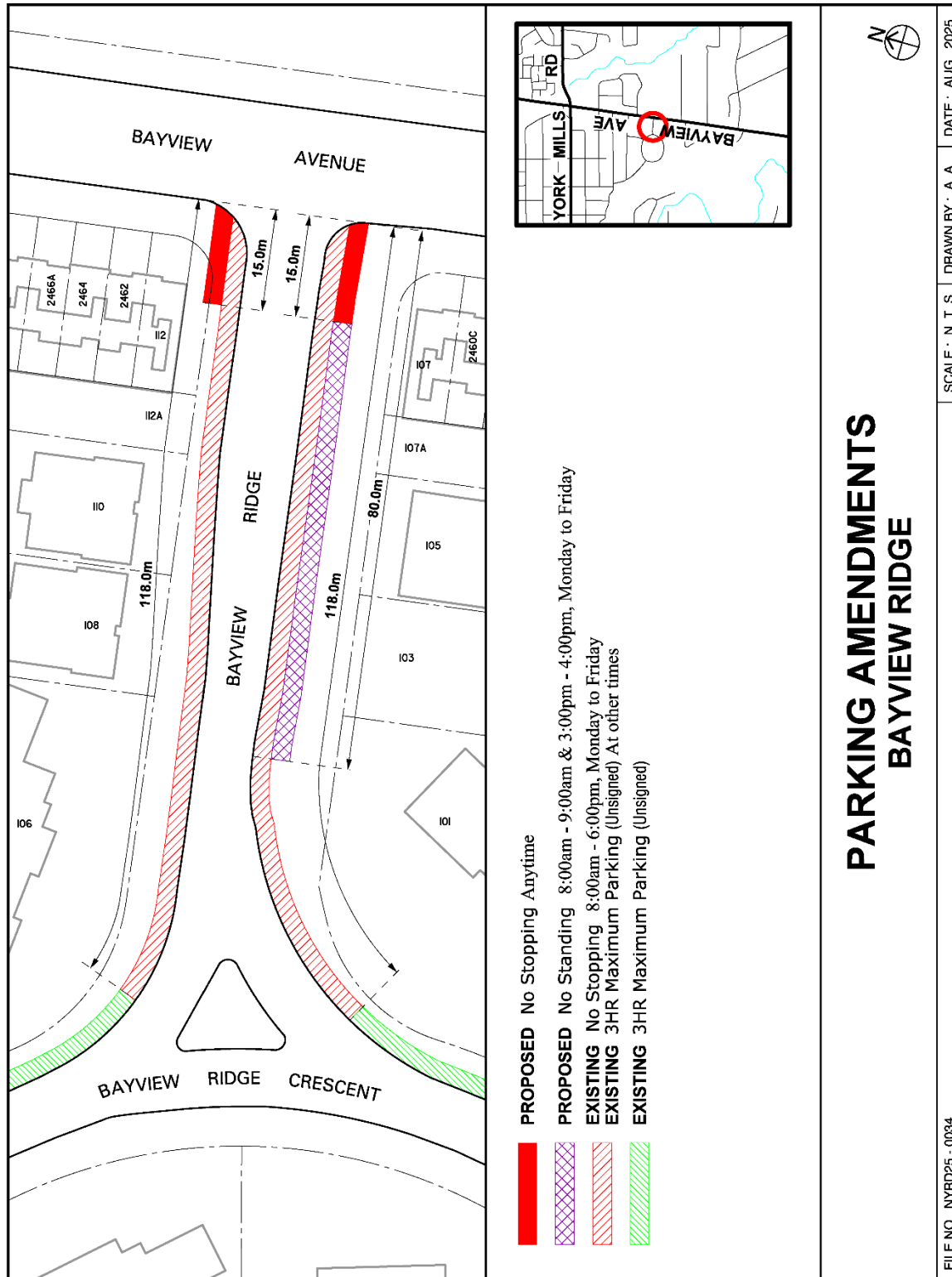
SIGNATURE

Mike Barnet, P.Eng.
Director, Enforcement and Street Management
Transportation Services

ATTACHMENTS

Attachment 1: Map - Parking Amendments - Bayview Ridge

Attachment 1: Map - Parking Amendments - Bayview Ridge



**PARKING AMENDMENTS
BAYVIEW RIDGE**

FILE NO. NYRD25 - 0034 | SCALE: N. T. S. | DRAWN BY: A. A. | DATE: AUG. 2025