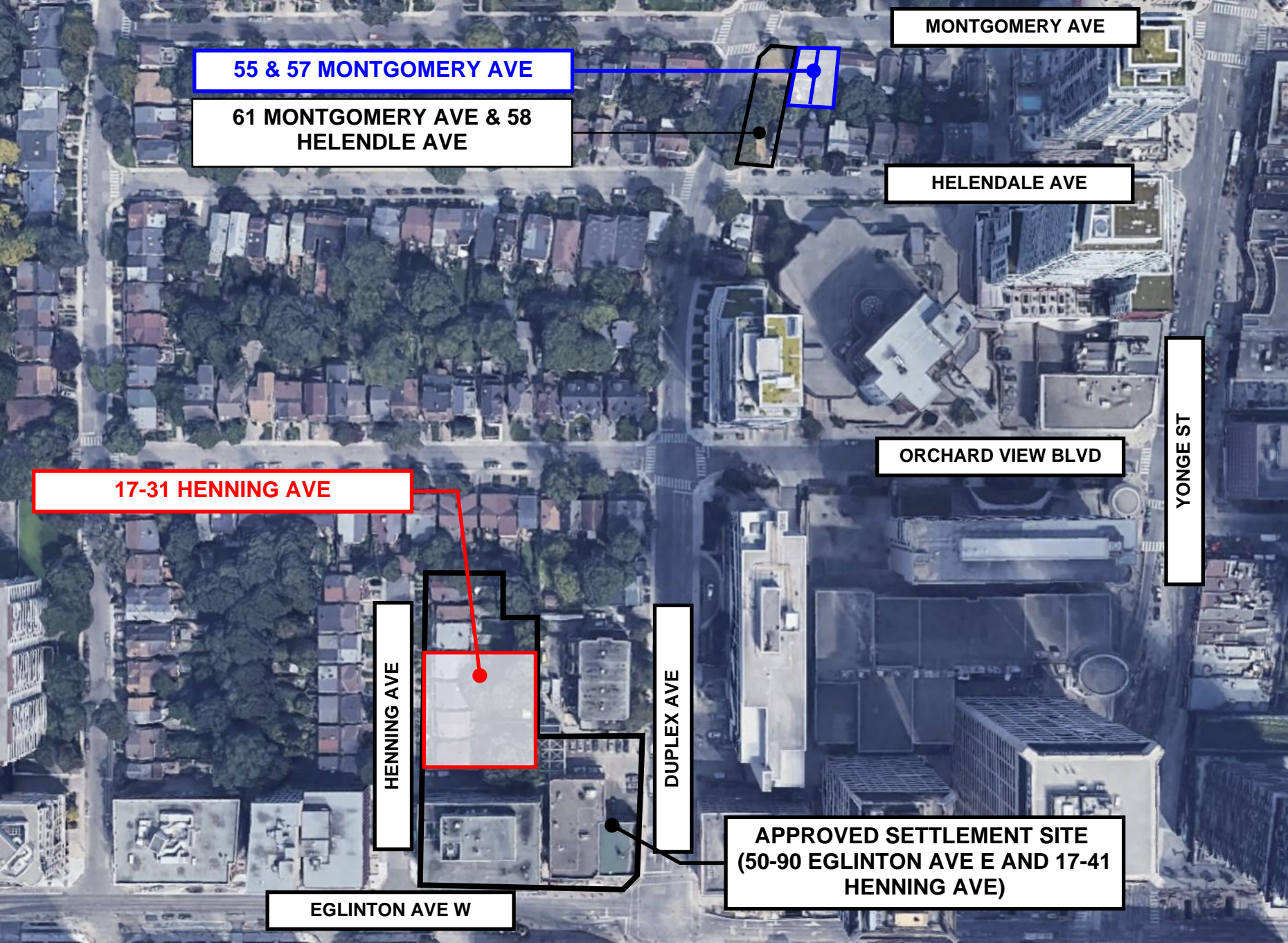


Yonge-Eglinton Secondary Plan
 MAP 21-8 Parks and Open Space Network Plan

- | | | |
|----------------------------------|--------------------------------|------------------------------------|
| — Secondary Plan Boundary | ■ Priority Park Area | ▨ Decking - Further Study Required |
| ■ Existing/Approved Public Parks | ■ City-Owned Opportunity Sites | 🍏 School Properties |
| ▨ Ravines/Natural Areas | ■ Proposed Public Parks | ▨ Library Open Space |
| ▨ Park Expansion Areas | | ▨ Other Major Open Space |

Not to Scale ↑

July 20, 2018



55 & 57 MONTGOMERY AVE

61 MONTGOMERY AVE & 58 HELENDLE AVE

MONTGOMERY AVE

HELENDLE AVE

ORCHARD VIEW BLVD

YONGE ST

17-31 HENNING AVE

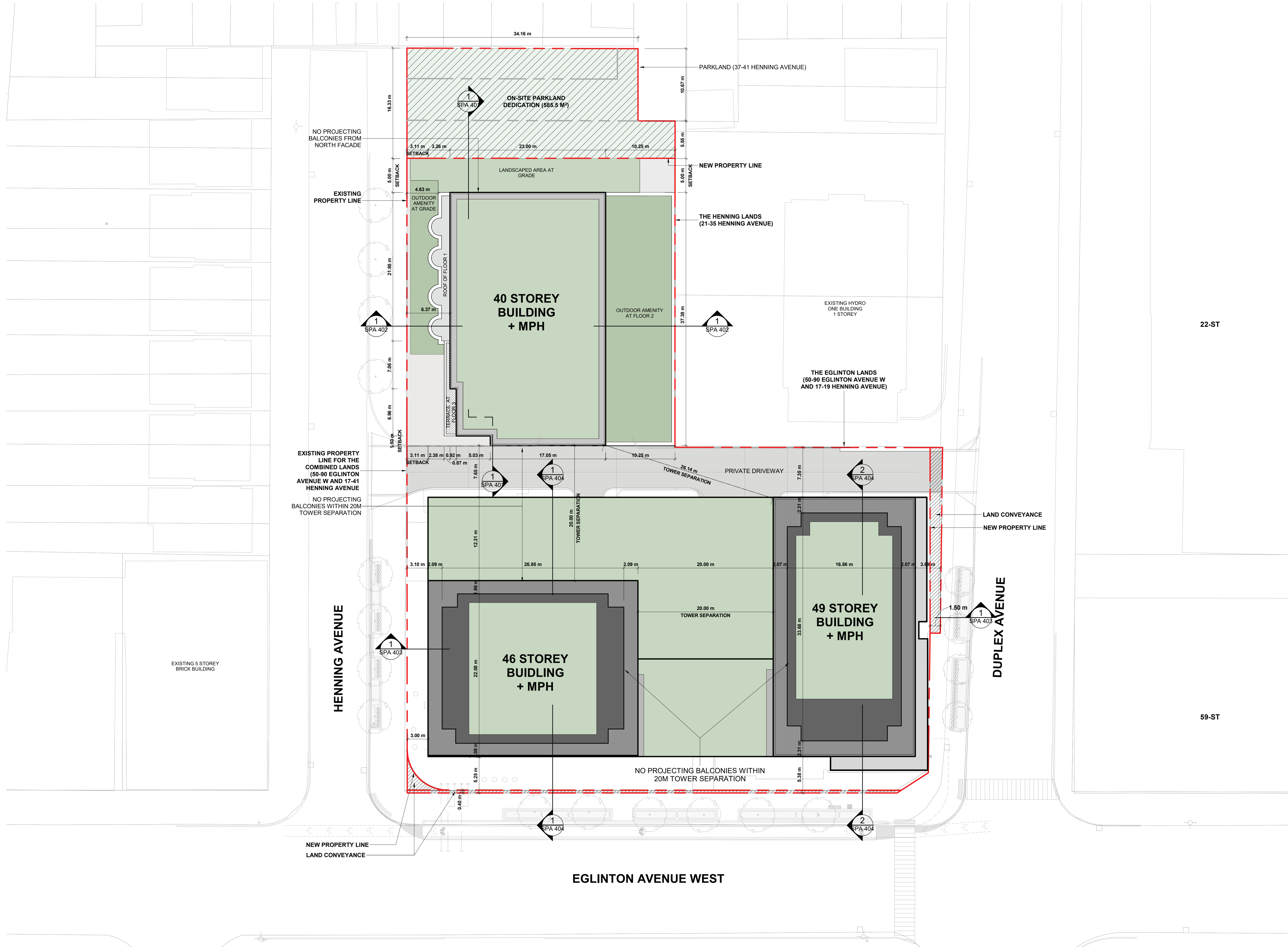
HENNING AVE

DUPLEX AVE

EGLINTON AVE W

**APPROVED SETTLEMENT SITE
(50-90 EGLINTON AVE E AND 17-41 HENNING AVE)**

This drawing, as an instrument of service, is provided by and is the property of Turner Fleischer Architects Inc. The contractor must verify and accept responsibility for all dimensions and conditions on site and must notify Turner Fleischer Architects Inc. of any variations from the supplied information. This drawing is not to be scaled. The architect is not responsible for the accuracy of survey, structural, mechanical, electrical, etc. information shown on this drawing. Refer to the appropriate consultant drawings before proceeding with the work. Contractor must comply with all applicable codes and requirements of authorities having jurisdiction. The contractor working from drawings not specifically marked "For Contractor" must assume full responsibility and bear costs for any corrections or damages resulting from his work.



#	DATE	ISSUED FOR SETTLEMENT	DESCRIPTION	IAAF	BY
1	2024/10/17				

PROJECT
17-41 HENNING AVENUE AND 50-90 EGLINTON AVENUE WEST
WITHOUT PREJUDICE
Toronto, ON

DRAWING
SITE PLAN

PROJECT NO. 21.023CS
PROJECT DATE 2023-12-04
DRAWN BY NGE
CHECKED BY AYU
SCALE 1:150

DRAWING NO. SPA 005	REV. 1
-------------------------------	------------------