



PB26.3

1778, 1908, 1914, 1920, and 1926 Bloor Street West – Inclusion on the Heritage Register

PB26.3

1778, 1908, 1914, 1920, and 1926 Bloor Street West



This location map is for information purposes only; the exact boundaries of the property are not shown. The arrow marks the location of the site.



Above: South and west elevations of 1778 Bloor Street West; Below: South elevations of 1908, 1914, 1920, and 1926 Bloor Street West

The subject properties contribute to the context of the north side of Bloor Street West fronting onto High Park.

PB26.3

1778, 1908, 1914, 1920, and 1926 Bloor Street West

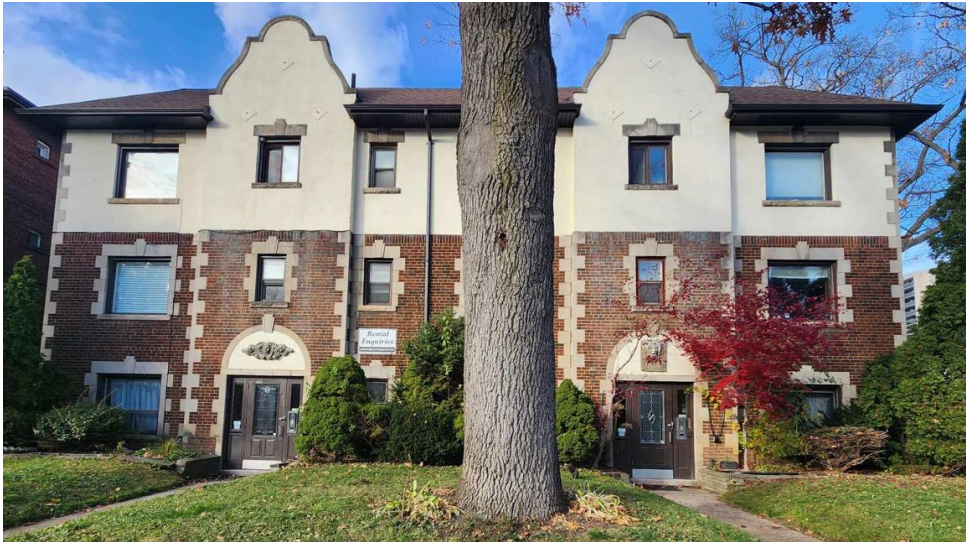


Constructed circa 1929, the property at 1778 Bloor Street West, known historically as the Mountview Garden Apartments, holds design value as a representative example of an early-20th century walk-up apartment building with Arts and Crafts movement influences.

South (front) and west elevations of 1778 Bloor Street West. Heritage Planning, 2024.

PB26.3

1778, 1908, 1914, 1920, and 1926 Bloor Street West



South elevation of 1908 Bloor Street West. Heritage Planning, 2024.

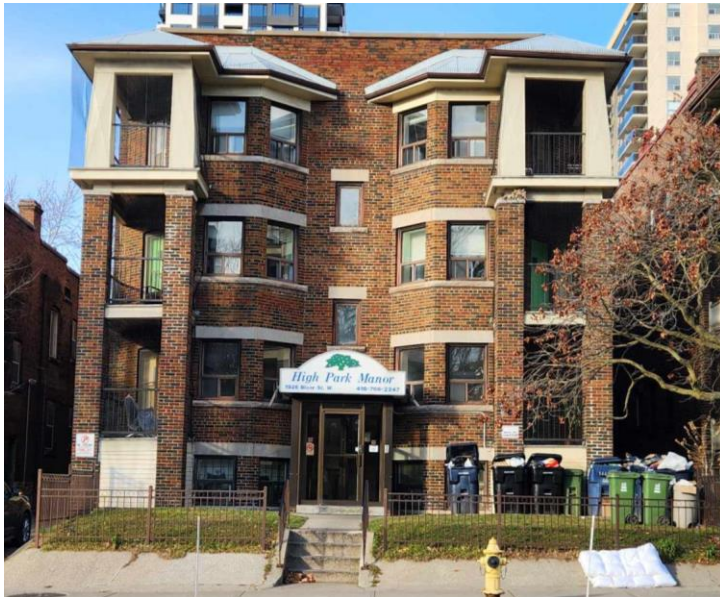


East elevation of 1908 Bloor Street West. Heritage Planning, 2024.

Constructed circa 1930, the property at 1908 Bloor Street West holds design value as an early-20th century walk up apartment building with Arts and Crafts movement influences. The property is associated with well-known Toronto architect Frank S. Mallory.

PB26.3

1778, 1908, 1914, 1920, and 1926 Bloor Street West



South elevation of 1926 Bloor Street West.
Heritage Planning, 2024.



South elevation of 1920 Bloor Street West.
Heritage Planning, 2024.



South elevation of 1914 Bloor Street West.
Heritage Planning, 2024.

Constructed between circa 1928 and 1930, the properties at 1914, 1920 and 1926 Bloor Street West, known respectively as High Park Manor, Sunny South Apartments, and Park Manor Apartments, have design value as representative examples of early-20th century walk-up apartment buildings with Edwardian Classical influences.