



PB26.7

Alterations to Heritage Properties and Authority to Amend a Heritage Easement Agreement - 508 and 510 Church Street

PB26.7

508 & 510 Church St

This location map is for information purposes only; the exact boundaries of the property are not shown. The arrow marks the location of the site.



PB26.7
508 & 510 Church St

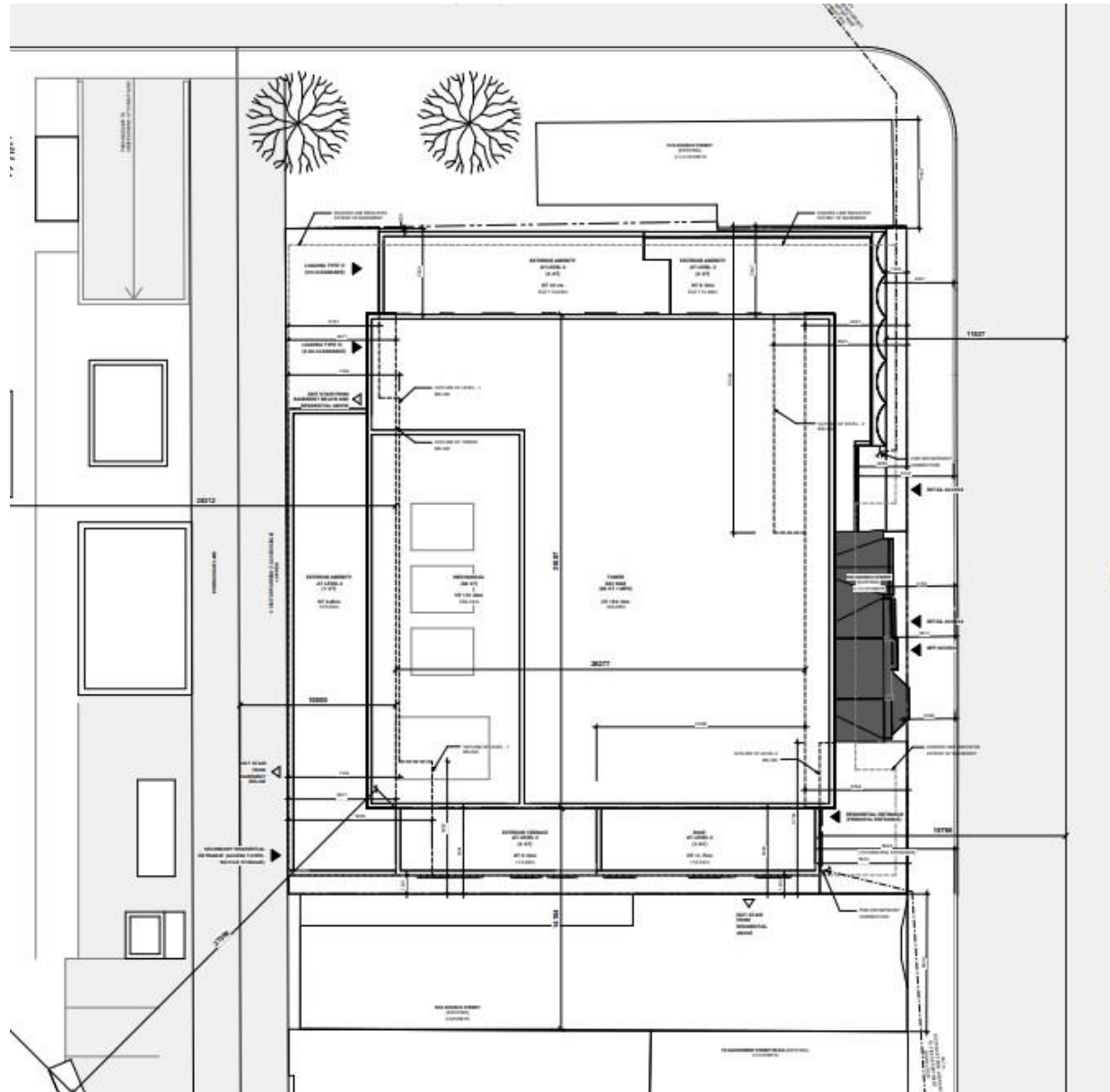


Northwestward view of the subject properties from across Church Street, 2022 (Heritage Planning).



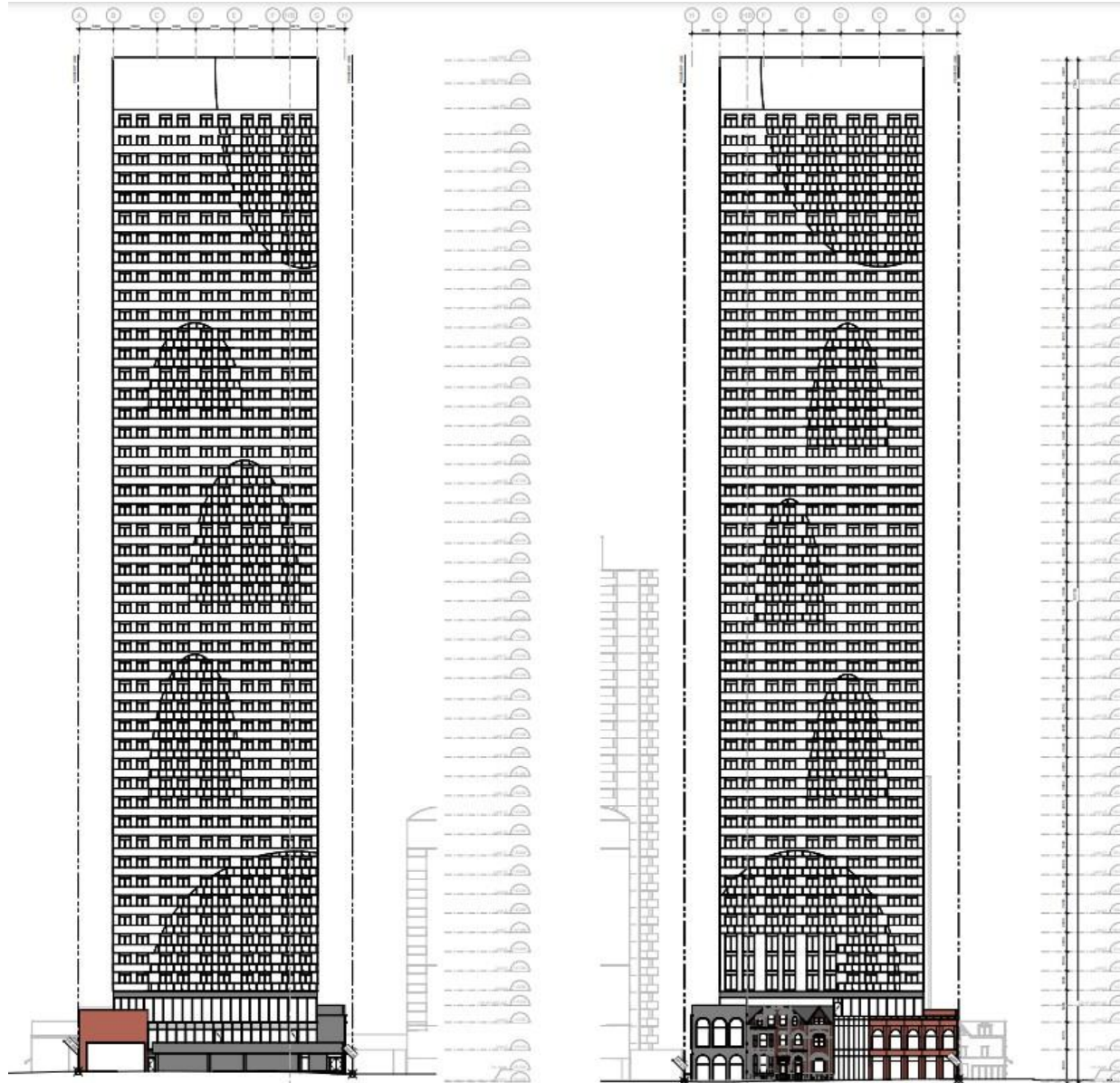
The rear coach house, viewed from Donna Shaw Lane, 2022 (Heritage Planning).

PB26.7
508 & 510 Church St



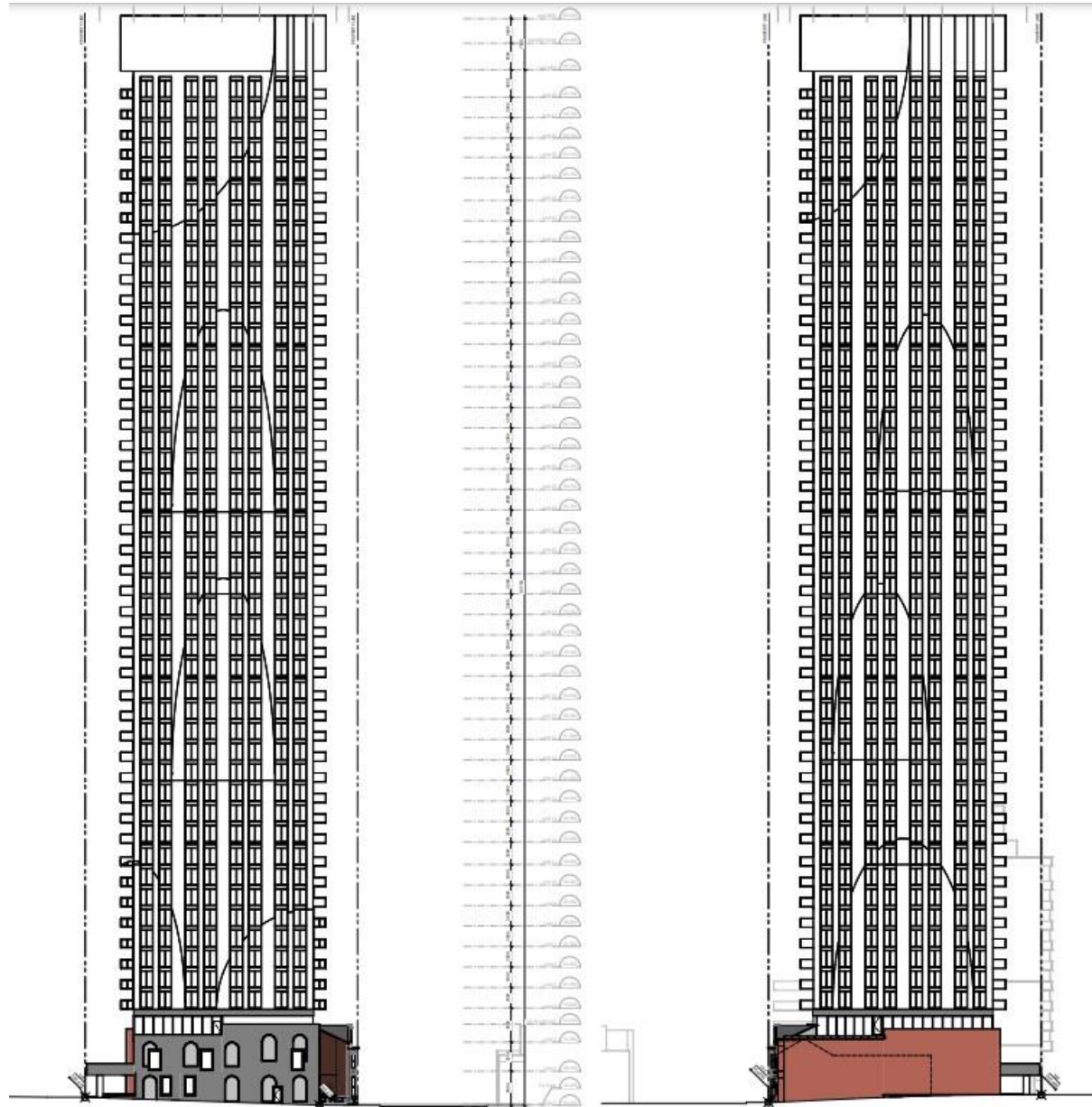
Site plan (Diamond Schmidt Architects, September 27, 2024)

PB26.7
508 & 510 Church St



West elevation (left) and east elevation (right) (Diamond Schmidt Architects, September 27, 2024)

PB26.7
508 & 510 Church St



South elevation (left) and north elevation (right) (Diamond Schmidt Architects, September 27, 2024)

PB26.7
508 & 510 Church St



Rendering looking southwest (Diamond Schmidt Architects, September 27, 2024)



Aerial view looking southwest (Diamond Schmidt Architects, September 27, 2024)