



PB29.2

750, 752, & 756-758 Yonge Street - Notice of Intention to Designate a Property under Part IV, Section 29 of the Ontario Heritage Act

PB29.2

750, 752, & 756-758 Yonge Street



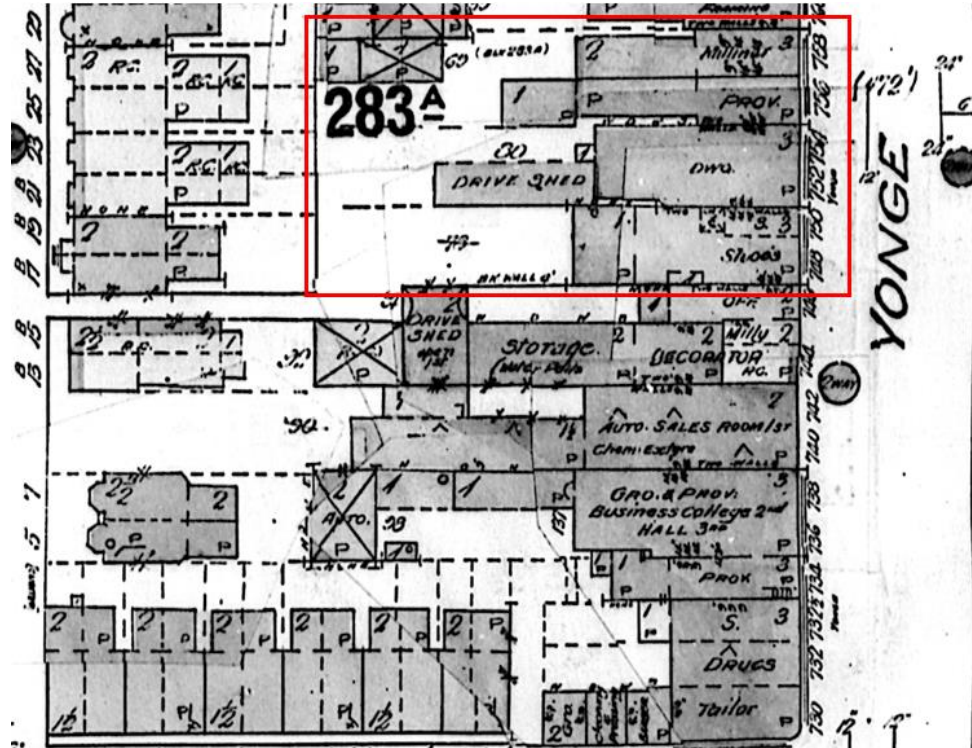
This location map is for information purposes only; the exact boundaries of the property are not shown. The arrow marks the location of the site.



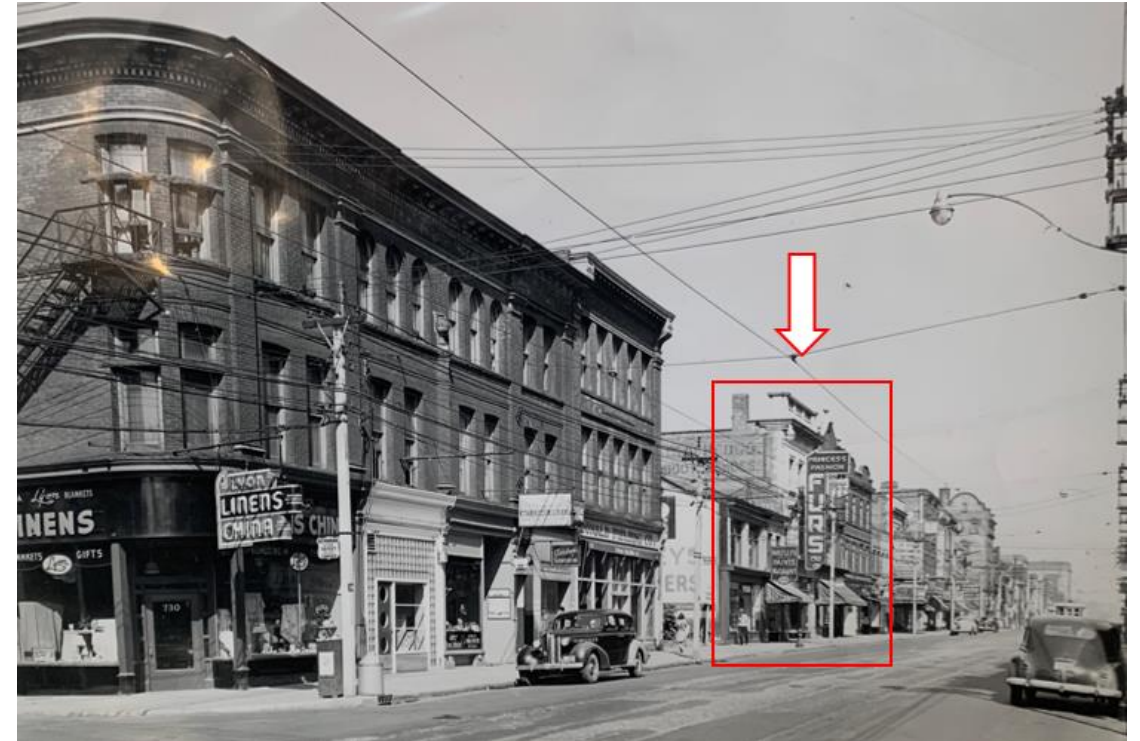
East elevations of 750, 752, and 756-758 Yonge Street.

PB29.2

750, 752, & 756-758 Yonge Street



Excerpt from 1909 Fire Insurance Plan. The buildings 750, 752, and 756-758 are illustrated on the map. Residential properties along Balmuto Street are visible to the west (Ng). Approximate location of subject properties outlined in red (annotated by Heritage Planning).

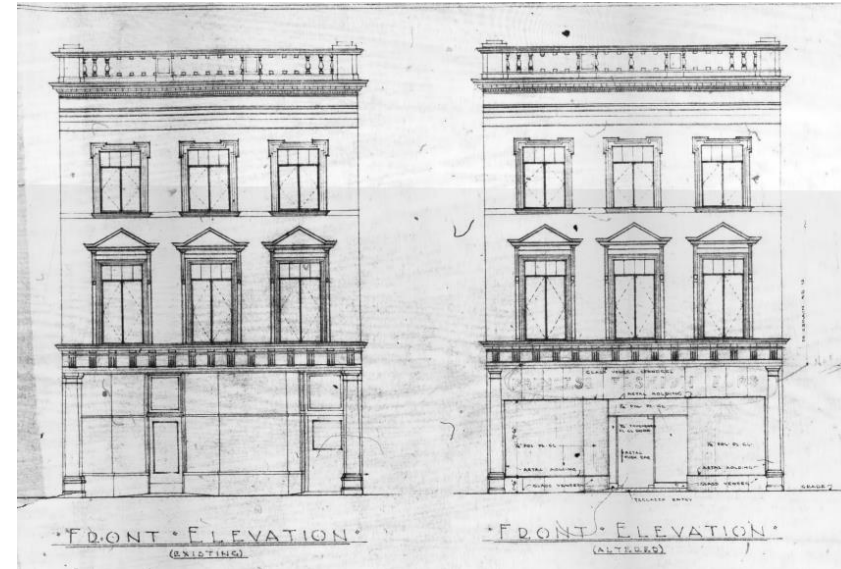


Yonge Street at Charles Street West, looking north, in September 1948. Subject properties outlined in red; all three of the buildings' original parapets are intact (CTA; annotated by Heritage Planning).

PB29.2 750, 752, & 756-758 Yonge Street



View of east elevation of 750 Yonge Street (Heritage Planning, 2024).



Building Records from 1946 for 750 Yonge Street. Elevation also shows the building's original parapet.



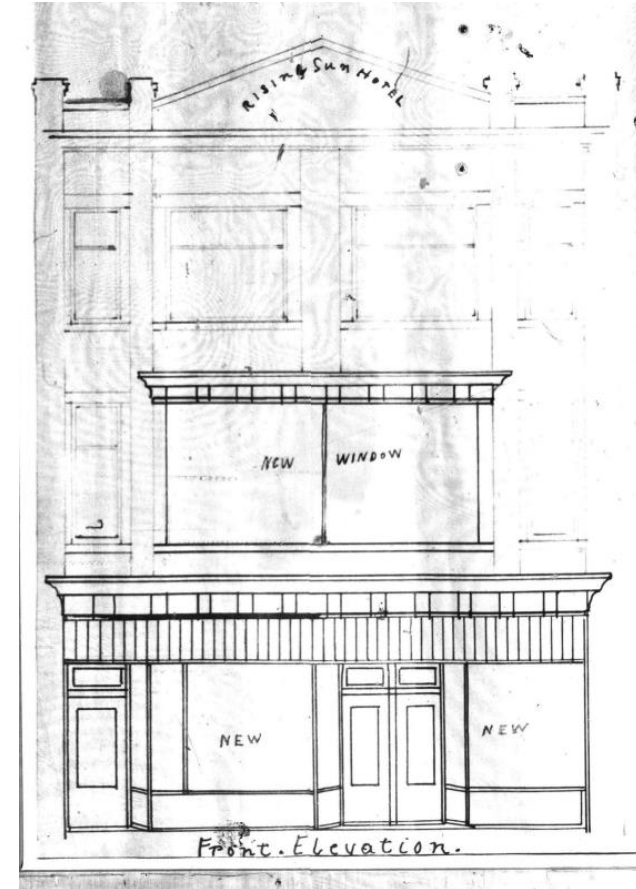
750, 752, and 756-758 Yonge Street in 1975. 756-758 Yonge Street's parapet has been removed (CTA).

PB29.2

750, 752, & 756-758 Yonge Street



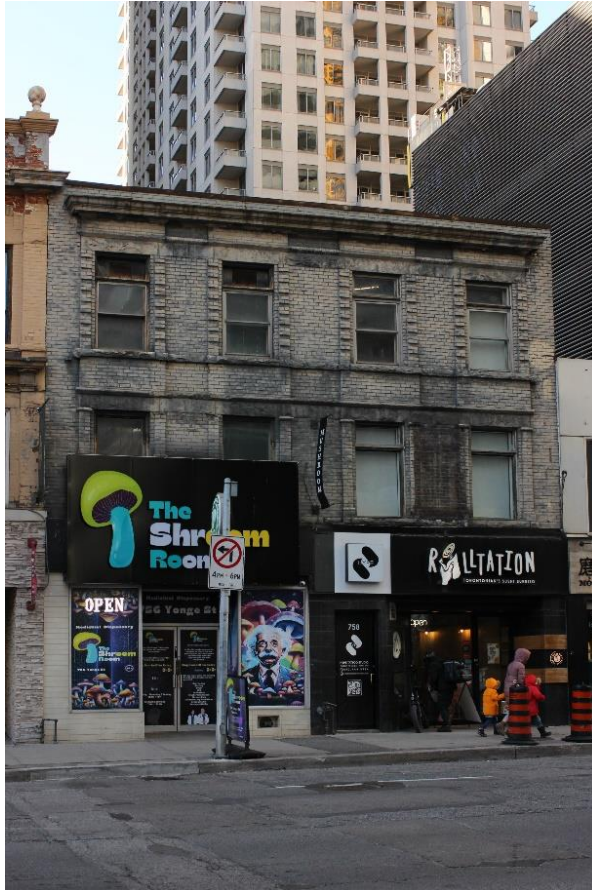
View of east elevation of 752 Yonge Street (Heritage Planning, 2024).



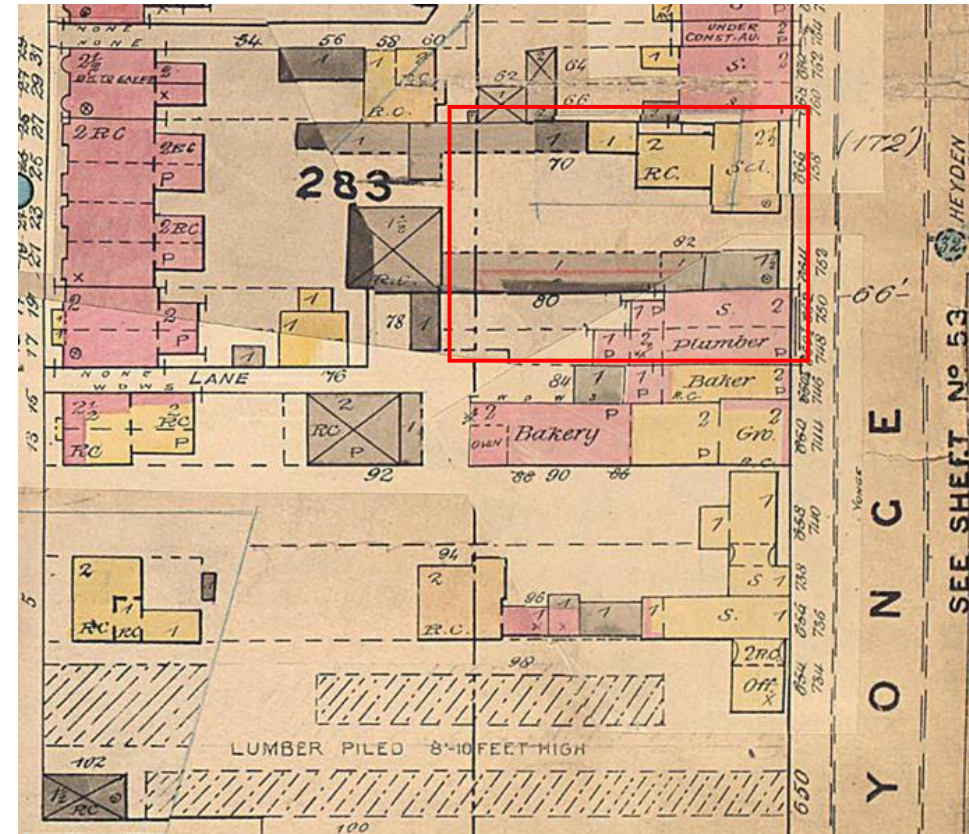
Building Records from 1922 showing the east elevation of 752 Yonge Street.

PB29.2

750, 752, & 756-758 Yonge Street



View of east elevation of 756-758 Yonge Street (Heritage Planning, 2024).



Excerpt 1889 Fire Insurance Plan (Ng). Approximate location of subject properties outlined in red (annotated by Heritage Planning). Note that the buildings shown in this image are those that pre-date the extant buildings today.

PB29.2

750, 752, & 756-758 Yonge Street



Contextual view from the southeast, looking northwest, with the subject properties at the centre of the photograph (Heritage Planning, 2024).



The subject properties at 750, 752, and 756-758 Yonge Street in context along Yonge Street, looking south, and showing the nearby heritage properties that collectively contribute to a historic streetwall (Heritage Planning, 2024).