

HARBORD VILLAGE RESIDENTS' ASSOCIATION

Box 68522, 360A Bloor St. W.
Toronto, ON M5S 1X1



December 9, 2025

Members of the Toronto Preservation Board,
c/o Tanya Spinello, Committee Administrator
Toronto City Hall
100 Queen Street West
Toronto, ON M5H 2N2
Email: hertpb@toronto.ca

Dear Chair and Members of the Toronto Preservation Board:

**Re: Agenda Item PB38.3 University Avenue Cultural Heritage Landscape Study
Ward 10,11)**

I am Sue Dexter. For years, my Association and Residents' Associations adjacent to Queen's Park have been working to preserve the Cultural Heritage Landscape of the Queen's Park Precinct.

We were both astonished and delighted to read of the University Avenue median study that is before you today. It is a good and welcome start for the protection of southern elements that will be an intrinsic part of University Park. But it does not extend to address the urgent needs to the north, the Queen's Park Precinct.

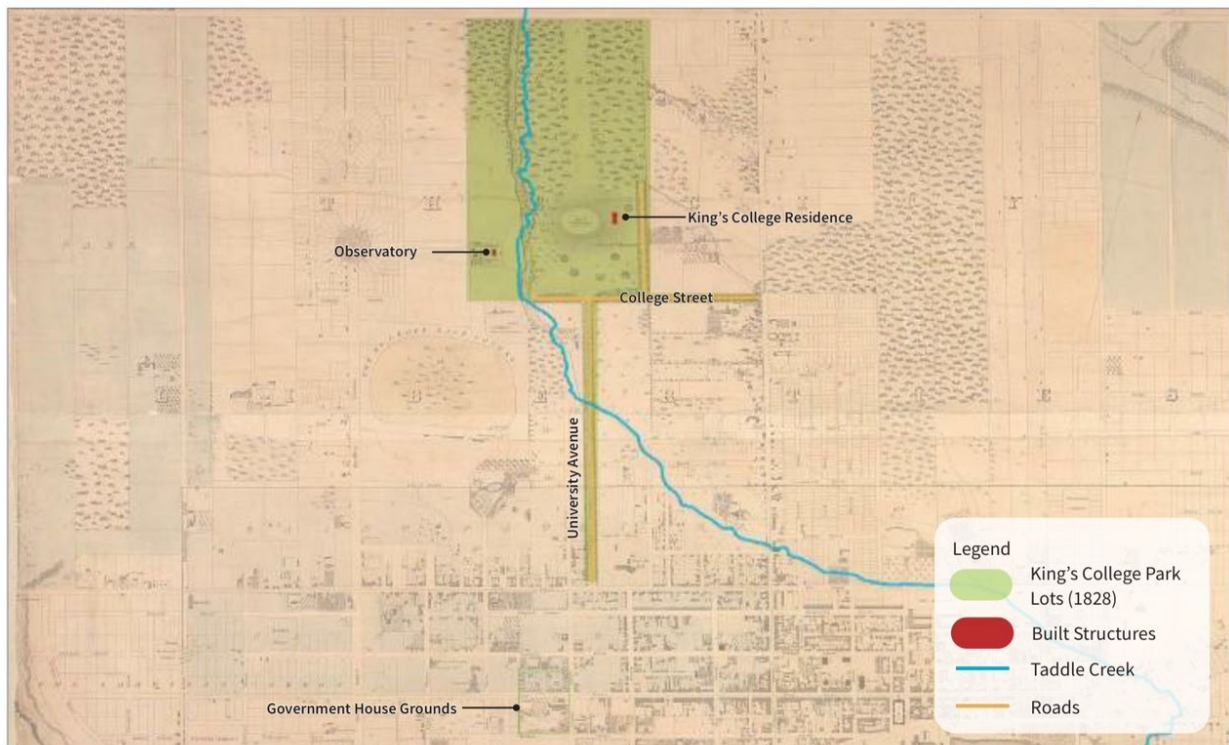
The Preliminary Historic Context Statement for Queen's Park North by ERA (November 14, 2025) shows the north and south elements of Queen's Park have been inextricably bound from the nineteenth century.



14. 'City of Toronto' Lithograph by William Nathaniel Wesbroom, C.1886. Toronto Public Library. Published by Toronto Lithographing Company.

4.2 Mapping Queen's Park: A Place of Evolving Identities (c1850s–1900s)

As King's College grounds were laid out, the public began using the eastern portion. Tree-lined 'Avenues' became popular recreational spaces. In 1845, one wing of King's College was built as part of a grand plan that ended when the institution ceased to exist.



36. 1842 Cane Topographical Plan of Toronto, annotated by ERA. 1842. Toronto Reference Library. Baldwin Collection of Canadiana. T-1842-LARGE.

Our concern is that protection will be provided for elements of the south while losing the north. This has now become a particular matter of urgency with the very generous offer of \$50 million by the Weston Foundation to the City of Toronto for the revitalization of Queen's Park North plus funding for long term maintenance and programming. This incredible donation is to be directed to the protection and enhancement of the Queen's Park North landscape that was so precious to Hillary Weston.

For more than a year of consultations, surveys and meetings the Parks Department has embraced plans that acknowledge the need for restoration and conservation, while at the same time proposing significant change: 'big moves', animation and built structures that threaten the survival of the park as a centre of natural respite that is so clearly supported by our communities.

These plans are presently underway, including drawing up a governance model which could permit changes in use, including commercialization, with little reference to heritage. These could be through Council and approved within six weeks.

If sections of University Avenue and Queen's Park are treated in isolation, we not only risk losing coherence, we risk the survival of the Queen's Park Precinct as a cultural heritage landscape.

To date, jurisdiction has been divided. There has been more than one year of consultations and discussions with the Parks Department, the lead in charge of the City's response on Queen's Park North, and yet we heard nothing of this important initiative to the south, led by the Planning Department. Importantly, Parks Department strategy does not address heritage.

Second, and very important is the failure to act.

We last appeared before you in 2020, raising concerns about the impact of a U of T building proposal at 78-90 Queen's Park West. A group of many RAs across the city, and private citizens living in Toronto and beyond expressed concern on the impact of the University's development within the cultural heritage district of the Queen's Park Precinct. Over 100 letters were sent to the TEYCC meeting on October 15, 2020. Many made deputations. (TE19.3 and TE19.3)

The Toronto Preservation Board moved a motion in support: City Council request the Chief Planner and Executive Director, City Planning to defer action on the alterations proposed in the report until a comprehensive study of the Queen's Park cultural heritage landscape is complete.

That motion set the table for a City Council motion in 2021, which directed the Chief Planner and executive director to immediately undertake a cultural heritage landscape study of Queen's Park precinct. (2021: MM28.35. City solicitor report to PB 2021)

Nothing has been done.

There is no time to waste.

Recognition of the Queen's Park Precinct as a cultural heritage landscape or designation of Queens Park North, as is now proposed for the south, will ensure all proposed interventions are carefully evaluated to achieve the right balance and will do no harm for the conservation of this special place.

The work, now completed for the Heritage Context Statement for Queen's Park North together with other heritage impact studies already prepared can provide most all of the required information for the heritage cultural landscape study.

With your support, we request you take this opportunity to join the two halves of the precinct and lend your support to our request that the cultural heritage landscape study in the North begin.

Sincerely,

Susan Dexter

Harbord Village Residents' Association