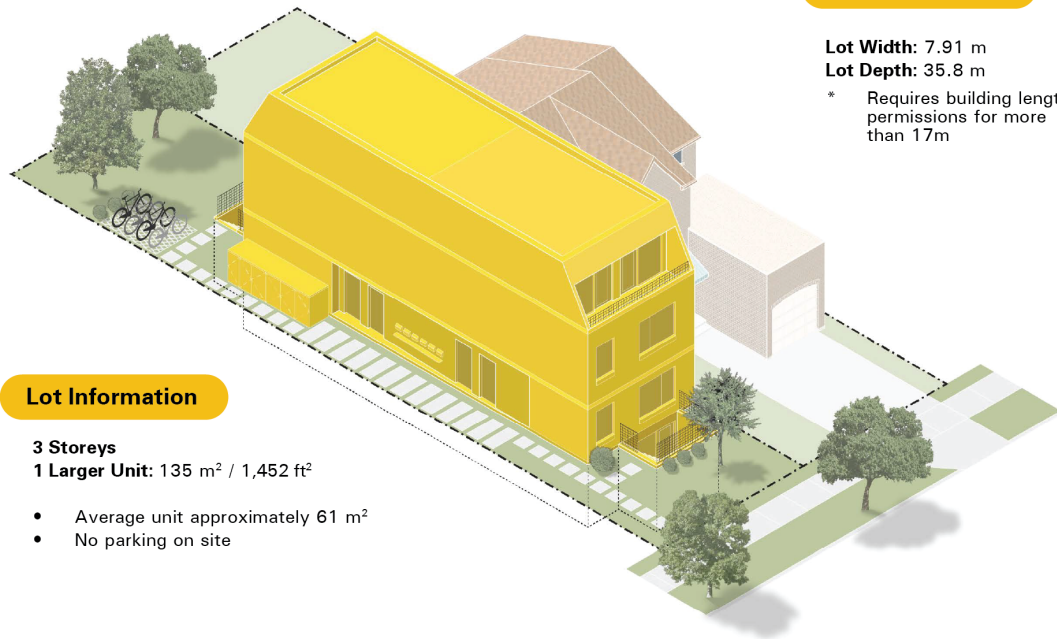


Attachment 3: Prototype Sixplexes – 10 metres (Ward 23 Study)

Prototype Sixplex I Narrow Lot



Lot Requirements

Lot Width: 7.91 m

Lot Depth: 35.8 m

* Requires building length permissions for more than 17m

Lot Information

3 Storeys

1 Larger Unit: 135 m² / 1,452 ft²

- Average unit approximately 61 m²
- No parking on site

Section Cut

Legend

- Unit 1 - Basement
- Unit 2 - Basement
- Unit 3 - Main Floor
- Unit 4 - Main Floor
- Unit 5 - Main/2nd Floor
- Unit 6 - 2nd/3rd Floor

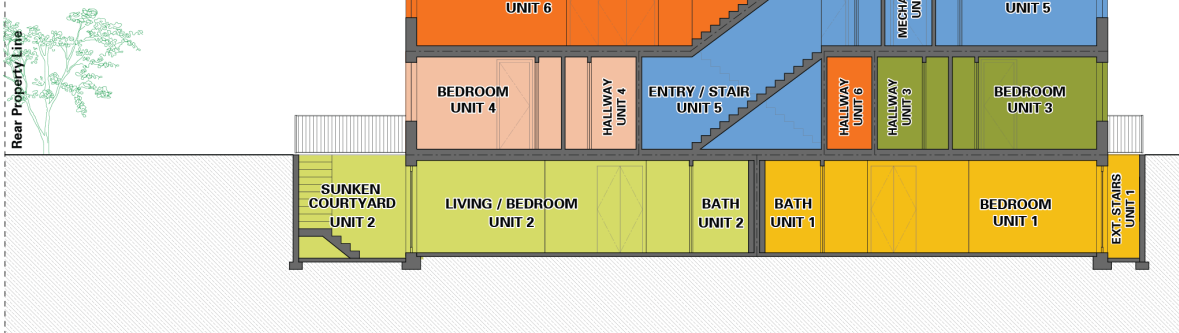


Image Credits: ReHousing (University of Toronto, John H. Daniels Faculty of Architecture Landscape and Design, and LGA Architectural Partners)

Prototype Sixplex | Mid-Width Lot

Lot Requirements

Lot Width: 10 m
 Lot Depth: 33.9 m

* Does not require building length permissions for more than 17m



Lot Information

- 3 Storeys
 1 Larger Unit: 107 m² / 1,151.74 ft²
- Average unit approximately 50 m²
 - 2 parking spaces on site in rear yard

Section Cut

Legend

- Unit 1 - Basement
- Unit 2 - Basement
- Unit 3 - Main Floor
- Unit 4 - Main Floor
- Unit 5 - Main/2nd Floor
- Unit 6 - 2nd/3rd Floor

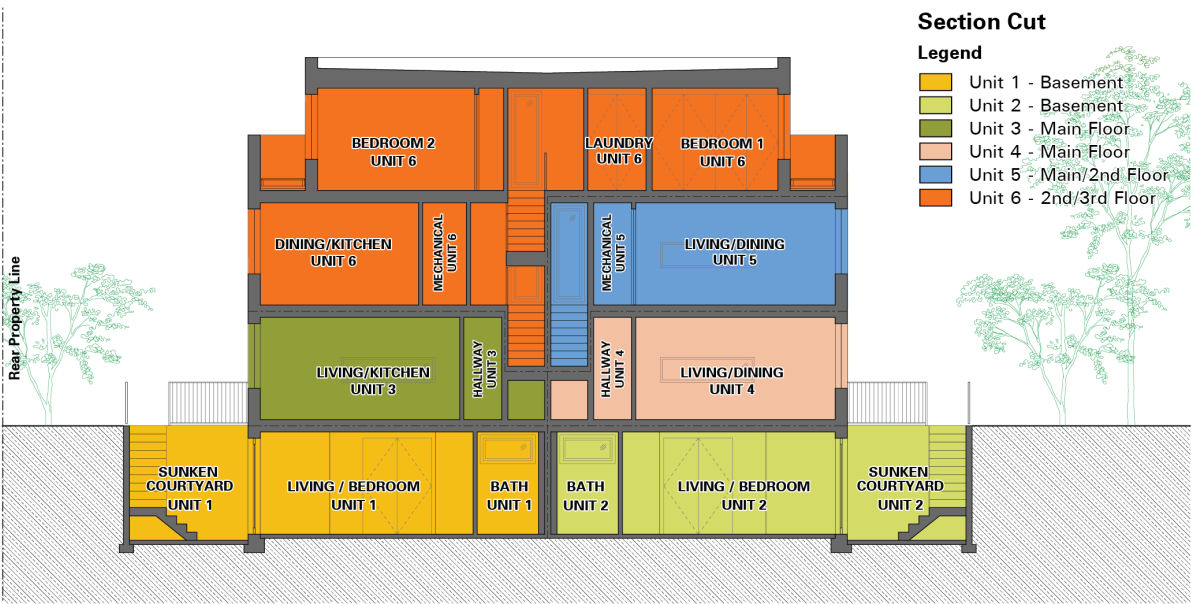


Image Credits: ReHousing (University of Toronto, John H. Daniels Faculty of Architecture Landscape and Design, and LGA Architectural Partners)

Prototype Sixplex | Wide Lot

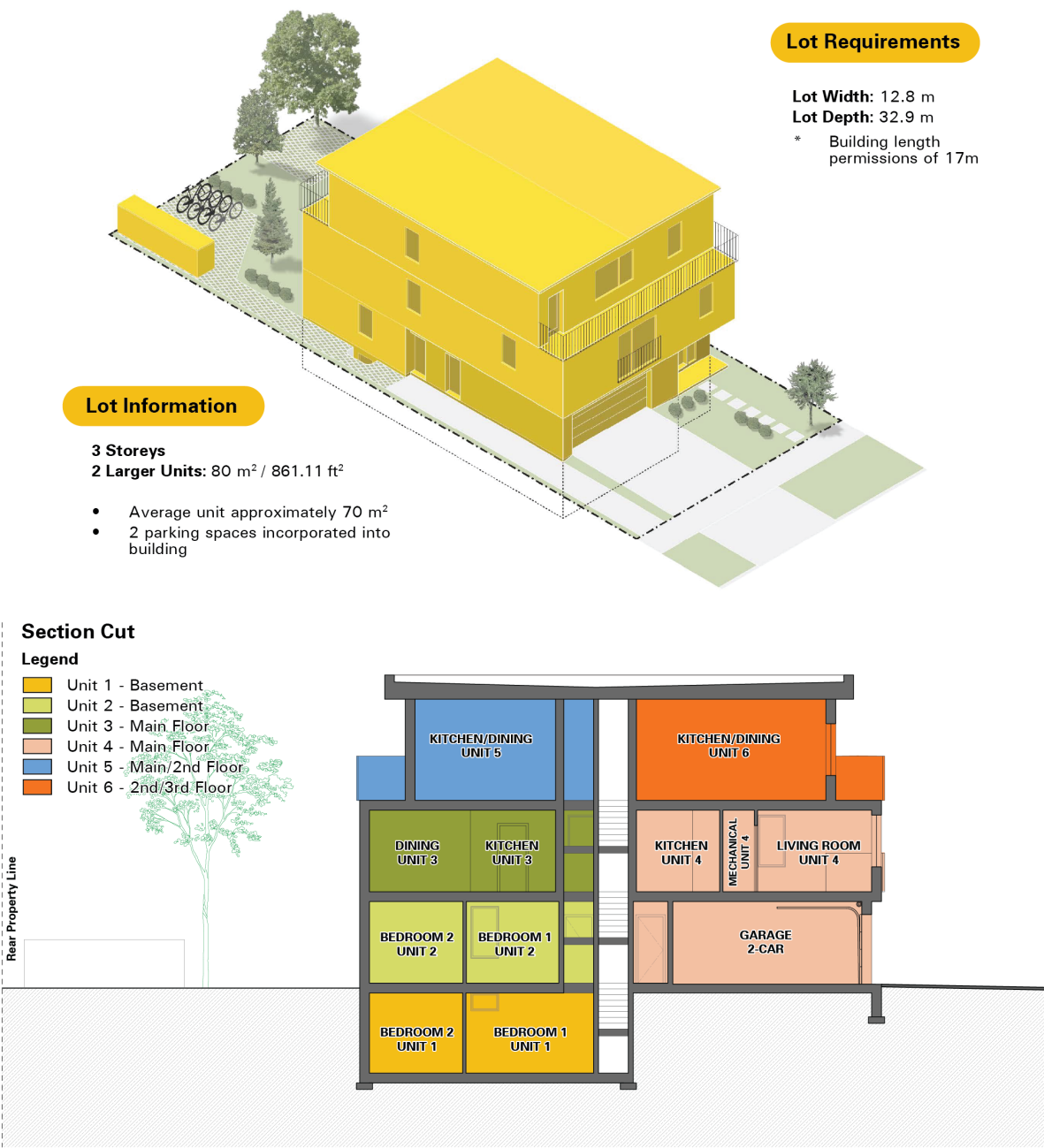


Image Credits: ReHousing (University of Toronto, John H. Daniels Faculty of Architecture Landscape and Design, and LGA Architectural Partners)