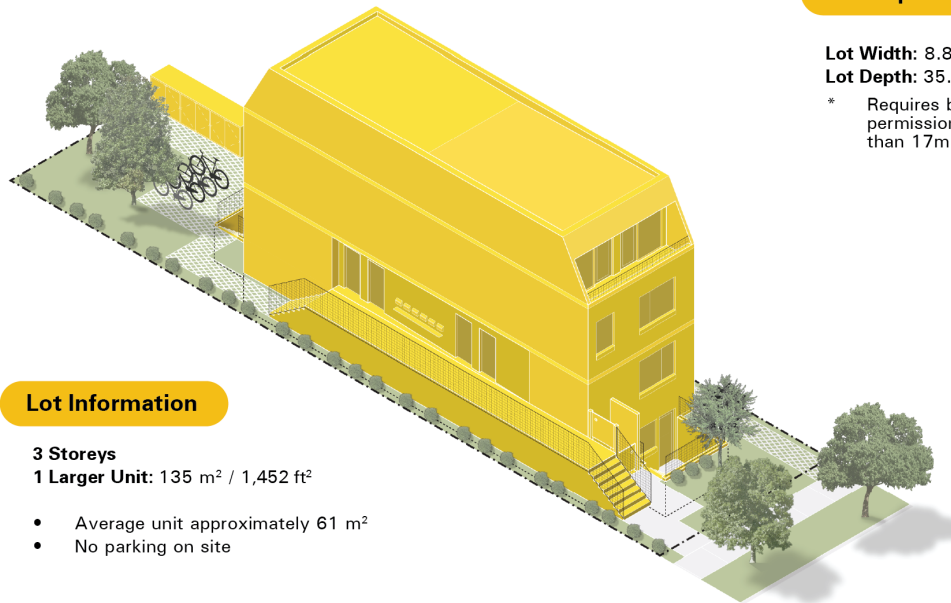


## Attachment 4: Prototype Sixplexes – 10.5 metres (Sixplex Study)

### Prototype Sixplex I Narrow Lot (10.5 Metre Height)



#### Lot Information

##### 3 Storeys

1 Larger Unit: 135 m<sup>2</sup> / 1,452 ft<sup>2</sup>

- Average unit approximately 61 m<sup>2</sup>
- No parking on site

#### Lot Requirements

Lot Width: 8.81 m

Lot Depth: 35.8 m

- \* Requires building length permissions for more than 17m

#### Section Cut

##### Legend

- Unit 1 - Basement
- Unit 2 - Basement
- Unit 3 - Main Floor
- Unit 4 - Main Floor
- Unit 5 - Main/2nd Floor
- Unit 6 - 2nd/3rd Floor

Rear Property Line

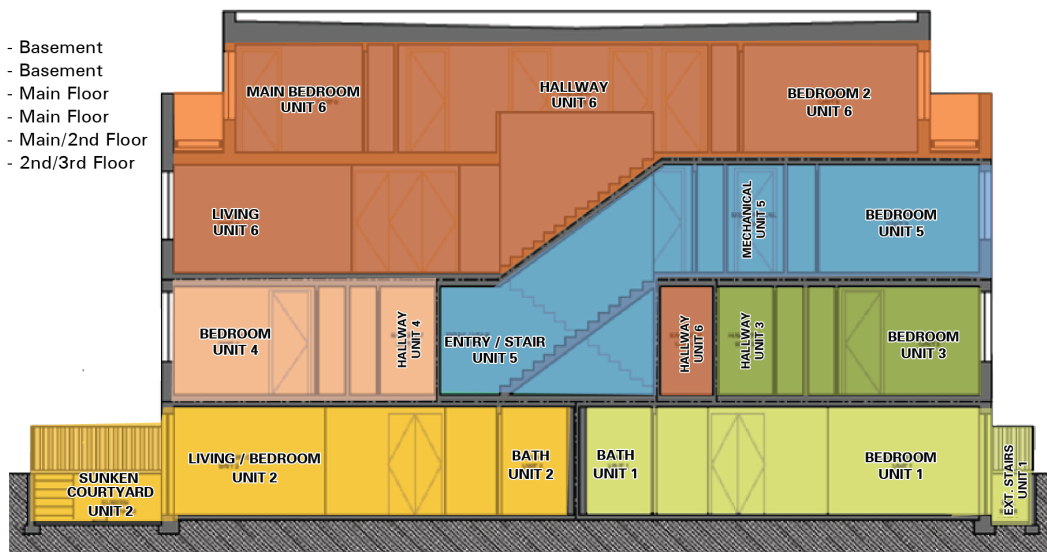


Image Credits: ReHousing (University of Toronto, John H. Daniels Faculty of Architecture Landscape and Design, and LGA Architectural Partners)

# Prototype Sixplex I Mid-Width Lot (10.5 Metre Height)



## Lot Requirements

**Lot Width:** 10 m

**Lot Depth:** 33.9 m

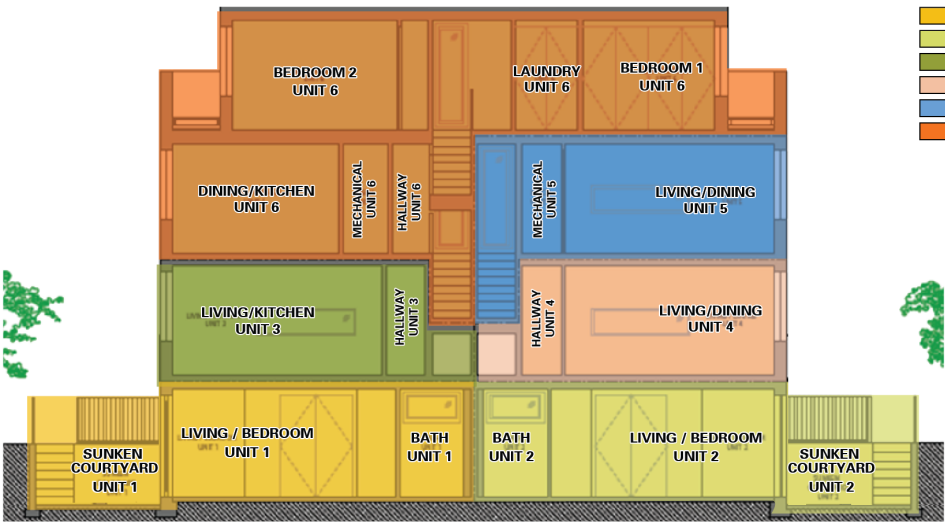
\* Does not require building length permissions for more than 17m

## Lot Information

**3 Storeys**

**1 Larger Unit:** 107 m<sup>2</sup> / 1,151.74 ft<sup>2</sup>

- Average unit approximately 50 m<sup>2</sup>
- 2 parking spaces on site in rear yard



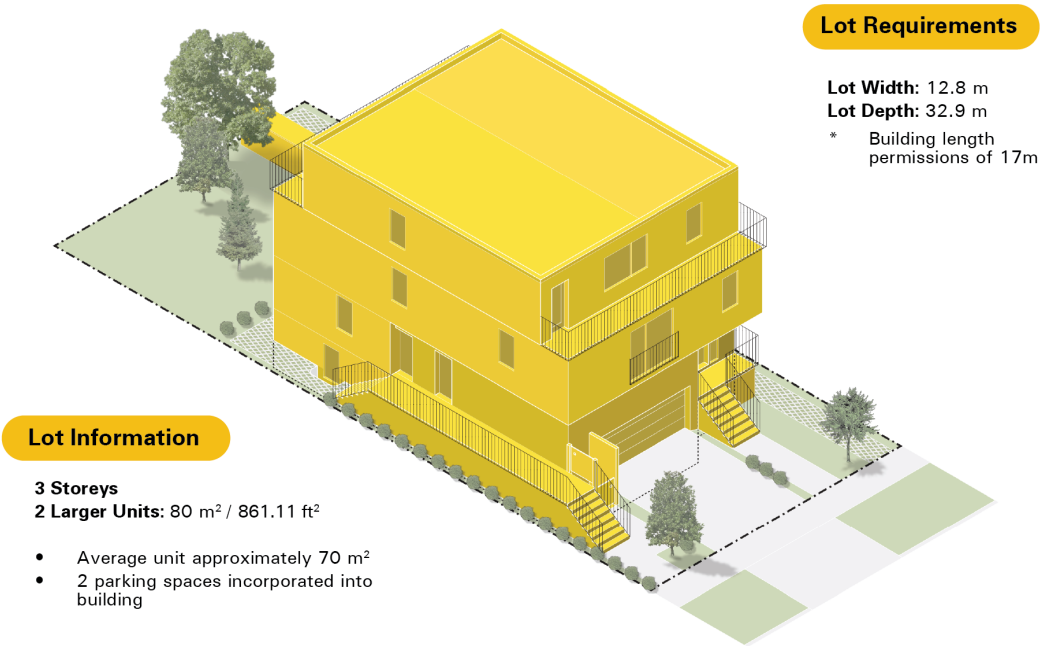
## Section Cut

### Legend

- Unit 1 - Basement
- Unit 2 - Basement
- Unit 3 - Main Floor
- Unit 4 - Main Floor
- Unit 5 - Main/2nd Floor
- Unit 6 - 2nd/3rd Floor

Image Credits: ReHousing (University of Toronto, John H. Daniels Faculty of Architecture Landscape and Design, and LGA Architectural Partners)

# Prototype Sixplex | Wide Lot (10.5 Metre Height)



## Section Cut

### Legend

- Unit 1 - Basement
- Unit 2 - Basement
- Unit 3 - Main Floor
- Unit 4 - Main Floor
- Unit 5 - Main/2nd Floor
- Unit 6 - 2nd/3rd Floor

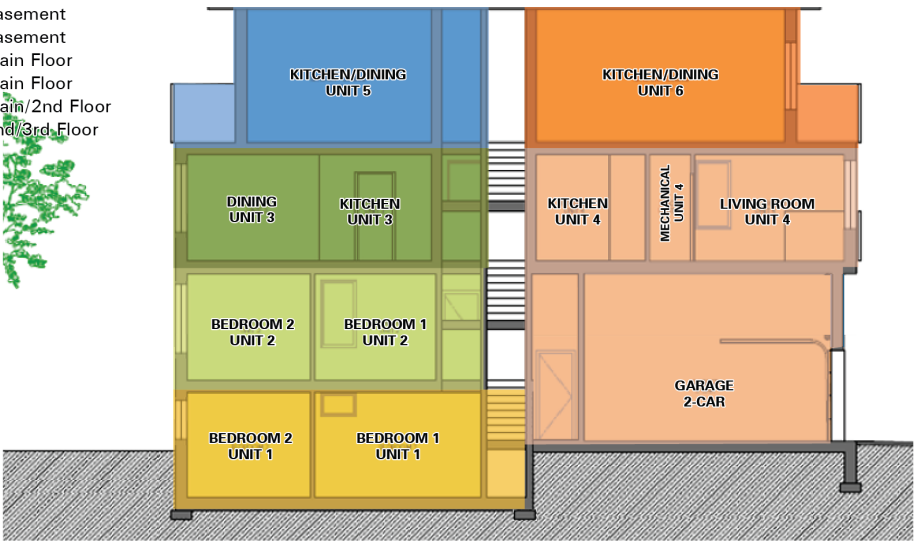


Image Credits: ReHousing (University of Toronto, John H. Daniels Faculty of Architecture Landscape and Design, and LGA Architectural Partners)