

Traffic Calming (Speed Humps) - Beechgrove Drive

Date: May 20, 2025

To: Scarborough Community Council

From: Director, Traffic Management, Transportation Services

Wards: Ward 25, Scarborough-Rouge Park

SUMMARY

This staff report is about a matter that Community Council has delegated authority from City Council to make a final decision.

Transportation Services is recommending the installation of speed humps on Beechgrove Drive, between Lawrence Avenue East and Megan Avenue. Staff's assessment indicates the criteria as set out in the updated Traffic Calming Policy has been satisfied. Therefore, speed humps should be installed on this section of Beechgrove Drive.

RECOMMENDATIONS

The Director, Traffic Management, Transportation Services recommends that:

1. Scarborough Community Council authorize the installation of speed humps on Beechgrove Drive, between Lawrence Avenue East and Megan Avenue.
2. Scarborough Community Council direct the City Solicitor to prepare a by-law to alter the roadway for the installation of 14 speed humps on Beechgrove Drive, between Lawrence Avenue East and Megan Avenue, generally as shown on Attachments 3, 4, and 5, Drawings TC-514, TC-515, and TC-516, dated April 2025, attached to the report entitled "Traffic Calming (Speed Humps) - Beechgrove Drive" from the Director, Traffic Management, Transportation Services.
3. Subject to approval of Recommendations 1 and 2 above, Scarborough Community Council reduce the speed limit from 40 km/h to 30 km/h on Beechgrove Drive, between Lawrence Avenue East and Megan Avenue.

FINANCIAL IMPACT

The estimated cost for installing 14 speed humps on Beechgrove Drive is \$56,000.00. Funding is subject to availability and competing priorities within the Transportation Services 2025 Capital Budget.

DECISION HISTORY

This report addresses a new initiative.

COMMENTS

Transportation Services received a request from the Ward Councillor, on behalf of area residents, to investigate the feasibility of installing speed humps on Beechgrove Drive, between Lawrence Avenue East and Megan Avenue. The residents are concerned that motorists travel at a high rate of speed on Beechgrove Drive.

Existing Conditions

Beechgrove Drive, between Lawrence Avenue East and Megan Avenue, is characterized by the following conditions:

- It is a two-lane, north-south and east-west, collector roadway
- It operates two-way traffic on a pavement width of approximately 6.5 metres
- The daily two-way traffic volume varies from approximately 1,350 to 2,450 vehicles
- The speed limit is 40 km/h
- Heavy trucks are prohibited at all times
- There is no Toronto Transit Commission (TTC) service provided
- There are no sidewalks on this street, except section on the north side between Megan Avenue and a point 80 metres east of Megan Avenue
- There is an all-way stop controlled intersection located at Fergalea Avenue

The land use in the area consists of single-family residential dwellings. This subject section of Beechgrove Drive is not within a designated Community Safety Zone.

A map of the area and proposed locations of the speed humps is included in Attachments 3, 4, and 5.

Study Results

As part of the assessment of the warrant criteria, two vehicle speed and volume studies were conducted on Beechgrove Drive from July 9 to 11, 2024. The results of the studies were evaluated against the warrant criteria for Traffic Calming as adopted by the City Council. The study results on Beechgrove Drive are summarized in Table 1.

Table 1: Beechgrove Drive Speed and Volume Study Results

Road section	Daily Traffic Volume	85th percentile speed criteria		95th percentile speed criteria	
		Results	Warrant Requirement	Results	Warrant Requirement
Between Lawrence Avenue East and Fergalea Avenue	1,350	44 km/h	48 km/h	49 km/h	55 km/h
Between Fergalea Avenue and Megan Avenue	2,450	49 km/h	48 km/h	54 km/h	55 km/h

Based on the study results, the section of Beechgrove Drive, between Fergalea Avenue and Megan Avenue, has satisfied the warrant criteria for both minimum block length and minimum vehicle speed. The block length was greater than 120 metres and the operating speed is 9 km/h over the warranted speed of 40 km/h.

Beechgrove Drive, between Lawrence Avenue East and Fergalea Avenue, does not meet the overall warrant for traffic calming for the following reason:

- Minimum speed: The operating speed must be a minimum of 8 km/h over the warranted speed limit. The operating speed of 44 km/h is 4 km/h under the required speed of 48 km/h. The 95th percentile speed must be a minimum of 15 km/h over the warranted speed limit. The 95th percentile speed of 49 km/h is 6 km/h under the required speed of 55 km/h.

The overall investigation concluded that the eligibility and warrant criteria as outlined in the updated Traffic Calming Policy has only been satisfied for the section of Beechgrove Drive, between Fergalea Avenue and Megan Avenue. Since this block satisfies the traffic calming warrant criteria, staff recommend the installation of speed humps over the entire length of the street to maintain consistency.

Relative Priority and Other Impacts

In the event that the number of approved requests for roadway traffic calming measures exceed the budget allocated for installation, funding for approved installations will be prioritized using a Prioritization Score. This score is made up of a Quantitative Score and a Qualitative Score.

The Quantitative Score is based on the results of the data collection, including travel speeds and traffic volumes to prioritize locations with higher vehicle speeds and volumes.

The Qualitative Score includes:

- Collision history to prioritize locations with a history of serious injury or fatal collisions and those involving a pedestrian or cyclist
- Equity to prioritize equity-deserving communities with a high-concentration of priority populations and those that are transportation disadvantaged
- Expected presence of vulnerable road users (elderly population, school children and pedestrians, including transit riders) to prioritize locations with a higher risk of fatal and serious injury collisions

The Quantitative and Qualitative Scores are averaged to provide the complete Prioritization Score. Beechgrove Drive, between Lawrence Avenue East and Megan Avenue, scored 16 ranking points out of a possible 100.

No alterations to parking regulations will be required, nor will the number of parking spaces be affected by the installation of speed humps. Installation of speed humps will have minimal effect on winter services, street cleaning and garbage collection.

Consultation with emergency services (Toronto Police Service, Toronto Fire Services and Toronto Paramedic Services) is required to ensure that the design and layout of a traffic calming proposal does not unduly affect their operations. Emergency services were advised of this proposal.

Toronto Paramedic Services responded and advised of potential delays in emergency responses but expressed support for initiatives that enhance community safety. A copy of their full response is included in Attachment 6. Toronto Police Service and Toronto Fire Services have not provided comments back at the time of writing this report. Installing speed humps will result in slower operating speeds for all vehicles, including emergency service vehicles.

The Ward Councillor has been advised of the recommendations in this report.

CONTACT

Dan Clement, CET, Manager Traffic Operations (Area 1), Transportation Services
416-397-5021, Dan.Clement@toronto.ca

SIGNATURE

Roger Browne, M.A.Sc., P. Eng.
Director, Traffic Management, Transportation Services

ATTACHMENTS

Attachment 1: Traffic Calming Warrant - Beechgrove Drive, between Lawrence Avenue East and Fergalea Avenue

Attachment 2: Traffic Calming Warrant - Beechgrove Drive, between Fergalea Avenue and Megan Avenue

Attachment 3: Speed Hump Locations Plan - Beechrove Drive, Lawrence Avenue East to Megan Avenue (Matchline, see drawing TC-515)

Attachment 4: Speed Hump Locations Plan - Beechrove Drive, Lawrence Avenue East - Megan Avenue (Matchline, see drawing TC-516)

Attachment 5: Speed Hump Locations Plan - Beechrove Drive, Lawrence Avenue East - Megan Avenue

Attachment 6: Letter from Toronto Paramedic Services, dated April 30, 2025

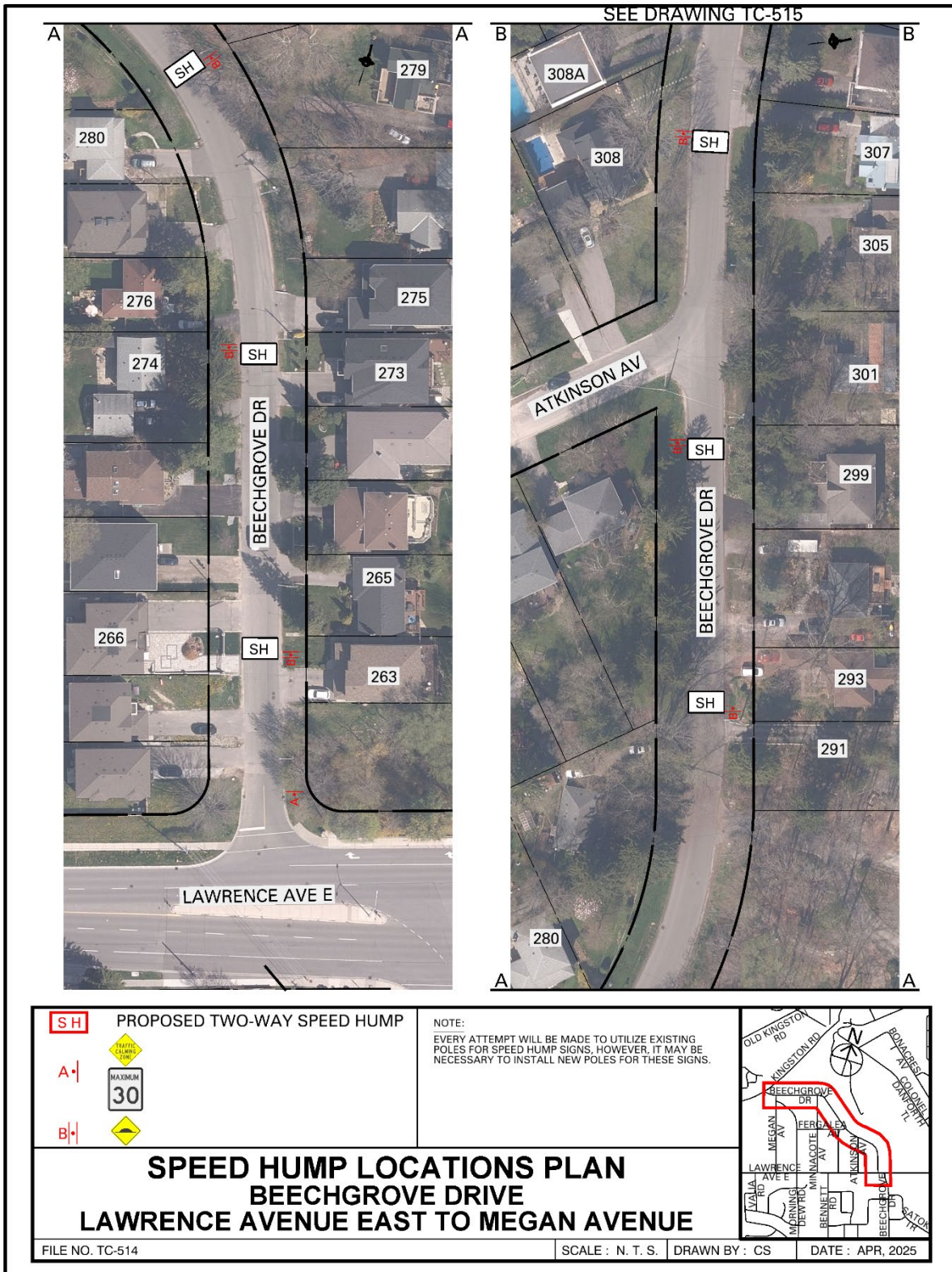
Attachment 1: Traffic Calming Warrant - Beechgrove Drive, between Lawrence Avenue East and Fergalea Avenue

Criteria		Requirement	Warrant Satisfied?
Community Support		A direct request from the Ward Councillor OR identified by Transportation Services in consultation with the Ward Councillor	Yes
Eligibility Criteria	Road Classification	Classified as a local or collector roadway, according to the Toronto Road Classification System	Yes
	Sidewalks	Presence of a sidewalk on at least one side of a local roadway and both sides of a collector roadway is preferred but not required	No
	Traffic Volume	Maximum average daily traffic volume of less than 8,000 vehicles per day	Yes
	Road Grade	Maximum roadway grade of up to 5%, can be considered in locations where the road grade is between 5% and 8% with additional review	Yes
	Emergency Services	No significant impacts on emergency services, including Toronto Fire, Paramedic and Police Services	Yes
	Transit Services	No significant impacts to regularly scheduled Toronto Transit Commission (TTC) services	N/A
Warrant Criteria	Minimum Block Length	Minimum block length of 120 metres based on the measured distance from centre to centre of controlled intersections AND	Yes (400 m)
	85th percentile speed	Minimum 85th percentile speed of 8 km/h over the warranted speed limit OR	No (4 km/h)
	95th percentile speed	Minimum 95th percentile speed of 15 km/h over the warranted speed limit	No (9 km/h)

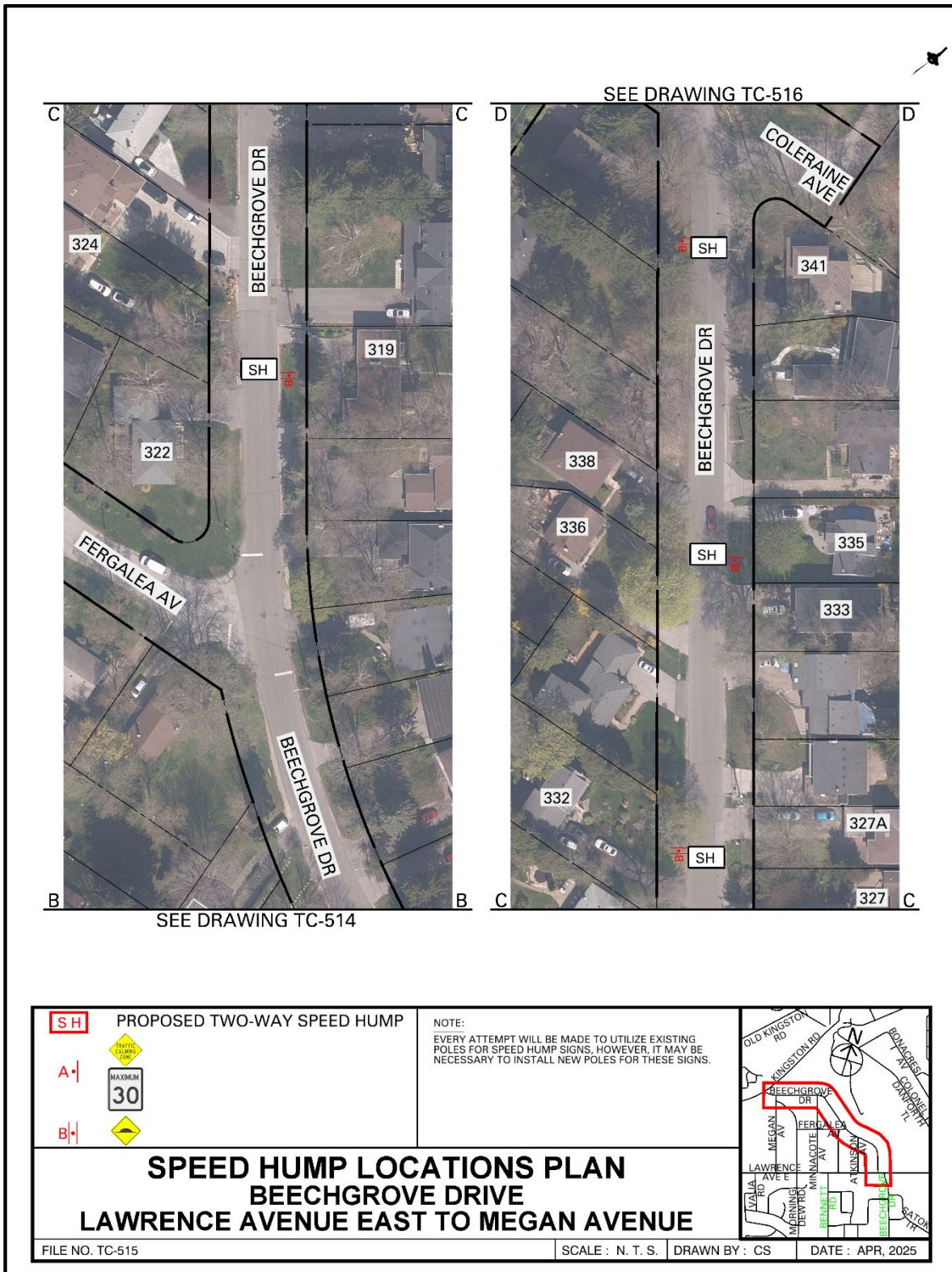
Attachment 2: Traffic Calming Warrant - Beechgrove Drive, between Fergalea Avenue and Megan Avenue

Criteria		Requirement	Warrant Satisfied?
Community Support		A direct request from the Ward Councillor OR identified by Transportation Services in consultation with the Ward Councillor	Yes
Eligibility Criteria	Road Classification	Classified as a local or collector roadway, according to the Toronto Road Classification System	Yes
	Sidewalks	Presence of a sidewalk on at least one side of a local roadway and both sides of a collector roadway is preferred but not required	No
	Traffic Volume	Maximum average daily traffic volume of less than 8,000 vehicles per day	Yes
	Road Grade	Maximum roadway grade of up to 5%, can be considered in locations where the road grade is between 5% and 8% with additional review	Yes
	Emergency Services	No significant impacts on emergency services, including Toronto Fire, Paramedic and Police Services	Yes
	Transit Services	No significant impacts to regularly scheduled Toronto Transit Commission (TTC) services	N/A
Warrant Criteria	Minimum Block Length	Minimum block length of 120 metres based on the measured distance from centre to centre of controlled intersections AND	Yes (600 m)
	85th percentile speed	Minimum 85th percentile speed of 8 km/h over the warranted speed limit OR	Yes (9 km/h)
	95th percentile speed	Minimum 95th percentile speed of 15 km/h over the warranted speed limit	No (14 km/h)

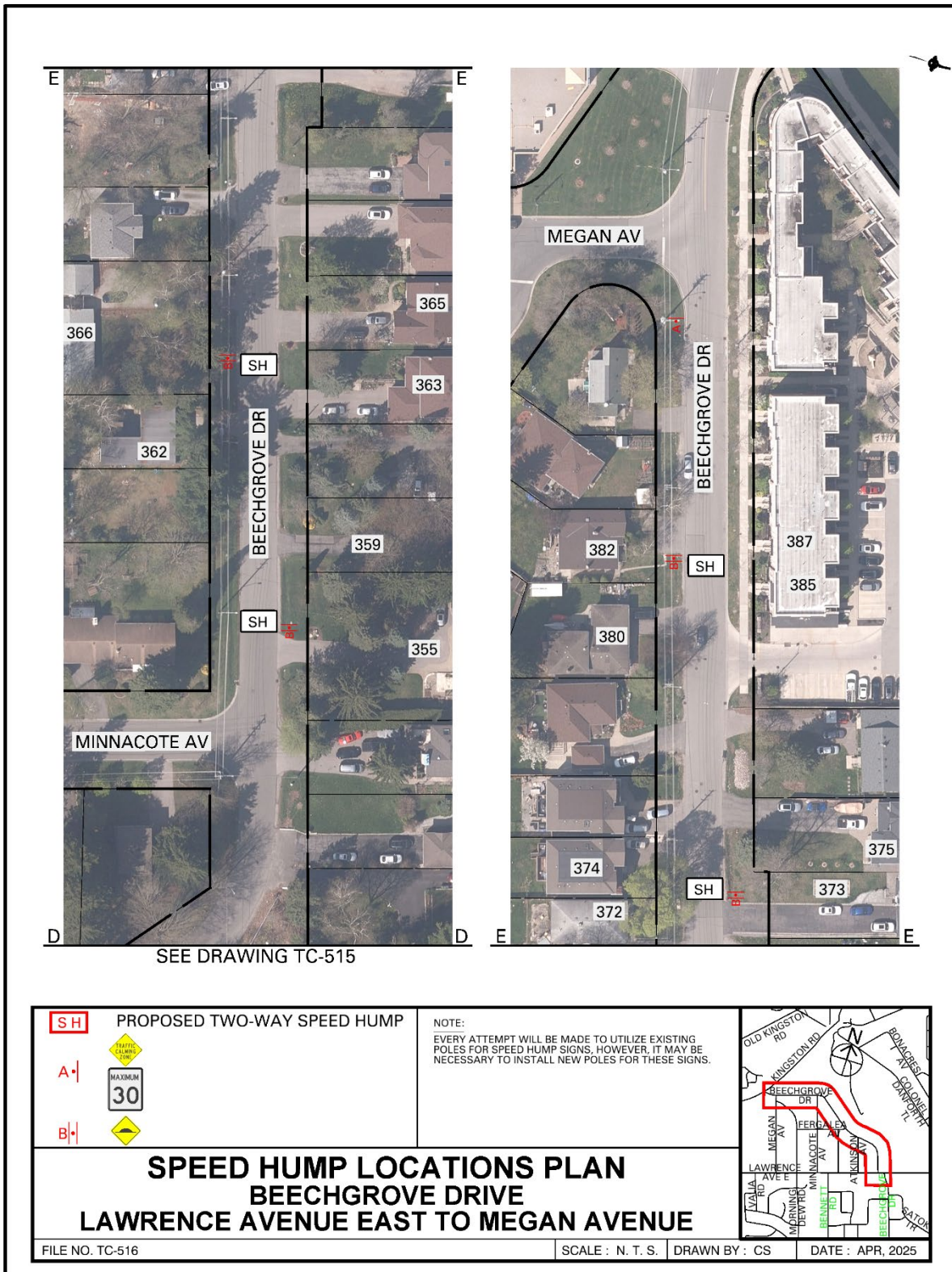
Attachment 3: Speed Hump Locations Plan - Beechgrove Drive, Lawrence Avenue East to Megan Avenue (Matchline, see drawing TC-515)



Attachment 4: Speed Hump Locations Plan - Beechgrove Drive, Lawrence Avenue East to Megan Avenue (Matchline, see drawing TC-516)



Attachment 5: Speed Hump Locations Plan - Beechgrove Drive, Lawrence Avenue East to Megan Avenue



Attachment 6: Letter from Toronto Paramedic Services, dated April 30, 2025

From: [EMS Planning](#)
To: [Omar Omar](#)
Cc: [Atif Sharif](#); [Jennifer Chung](#); [EMS Planning](#)
Subject: RE: Speed Humps - Beechgrove Drive between Lawrence Avenue East and Megan Avenue
Date: April 30, 2025 2:04:26 PM

We have received and reviewed the proposal for installation of speed humps on Beechgrove Drive, between Lawrence Avenue East and Megan Avenue, with the following comments:

The installation of speed humps on Beechgrove Drive, between Lawrence Avenue East and Megan Avenue, will impact response and transport times for residents that reside on the roadway speed humps are installed. Impacts may extend to community members if Beechgrove Drive, between Lawrence Avenue East and Megan Avenue, serves access to other roadways. It is important that the applicant understands that the installation of traffic calming devices will reduce the speed that emergency vehicles travel when responding to emergencies on roadways where they are installed.

Toronto Paramedic Services is supportive of community initiatives that improve the safety of all citizens of, and visitors to, the City of Toronto. Traffic and pedestrian safety are key components of a healthy neighbourhood, and we endeavour to support the wishes of the community to implement measures to improve upon these components.