



Kennedy Station Public Realm Master Plan

July 8, 2025



From Interchange to Transit Hub

The Kennedy Station area is a key transit hub, serving a high volume of users. With ongoing development and transit investment, the area will continue to experience growth and change.

- Incoming transit infrastructure:
 - Eglinton Crosstown LRT
 - Eglinton East LRT
 - Scarborough Subway Extension
 - Scarborough Busway
- Daily boardings and alightings are forecasted to grow from **45,000*** in 2024 to **82,000*** by 2051.

**on average*



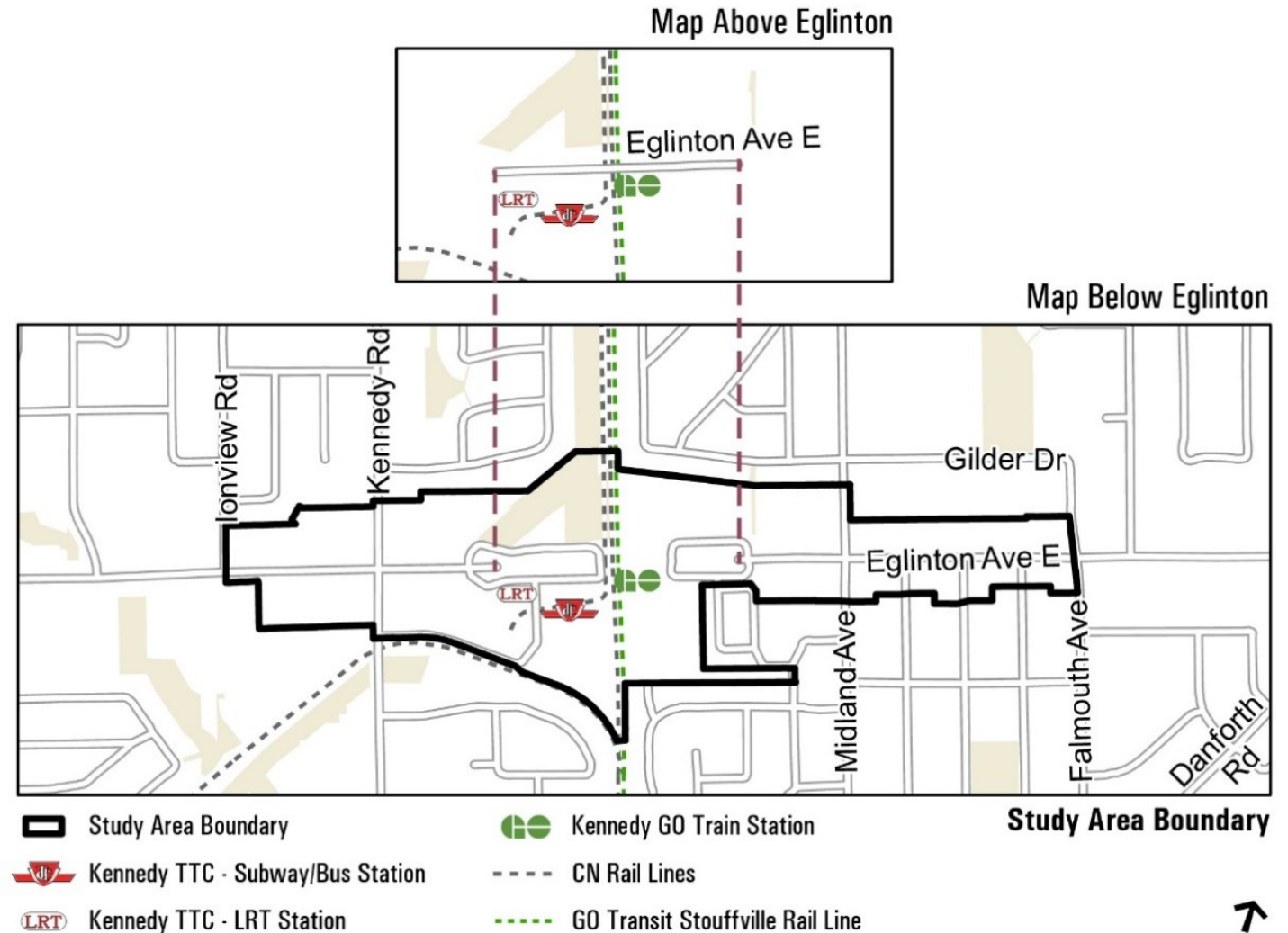
Master Plan Purpose

To guide decision-making and coordinate public realm improvements over the next 30+ years in response to transit investment and development potential.



Study Area

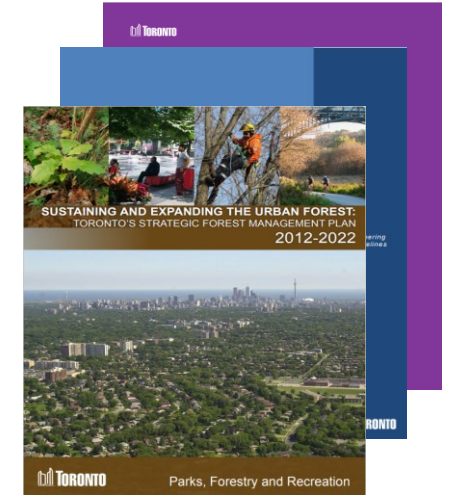
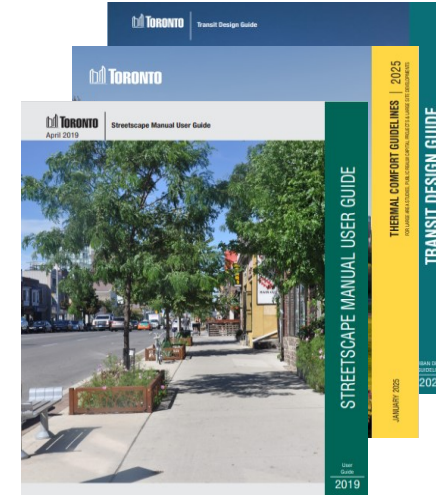
Bounded by Ionview Road to the west, Falmouth Avenue to the east, and the *Mixed Use Areas* to the north and south along Eglinton Avenue East.



Study Inputs: Background & TAC

Background Information & Analysis:

- Council endorsed documents
- Related ongoing initiatives
- Planned transit improvements
- Development activity
- Existing constraints analysis



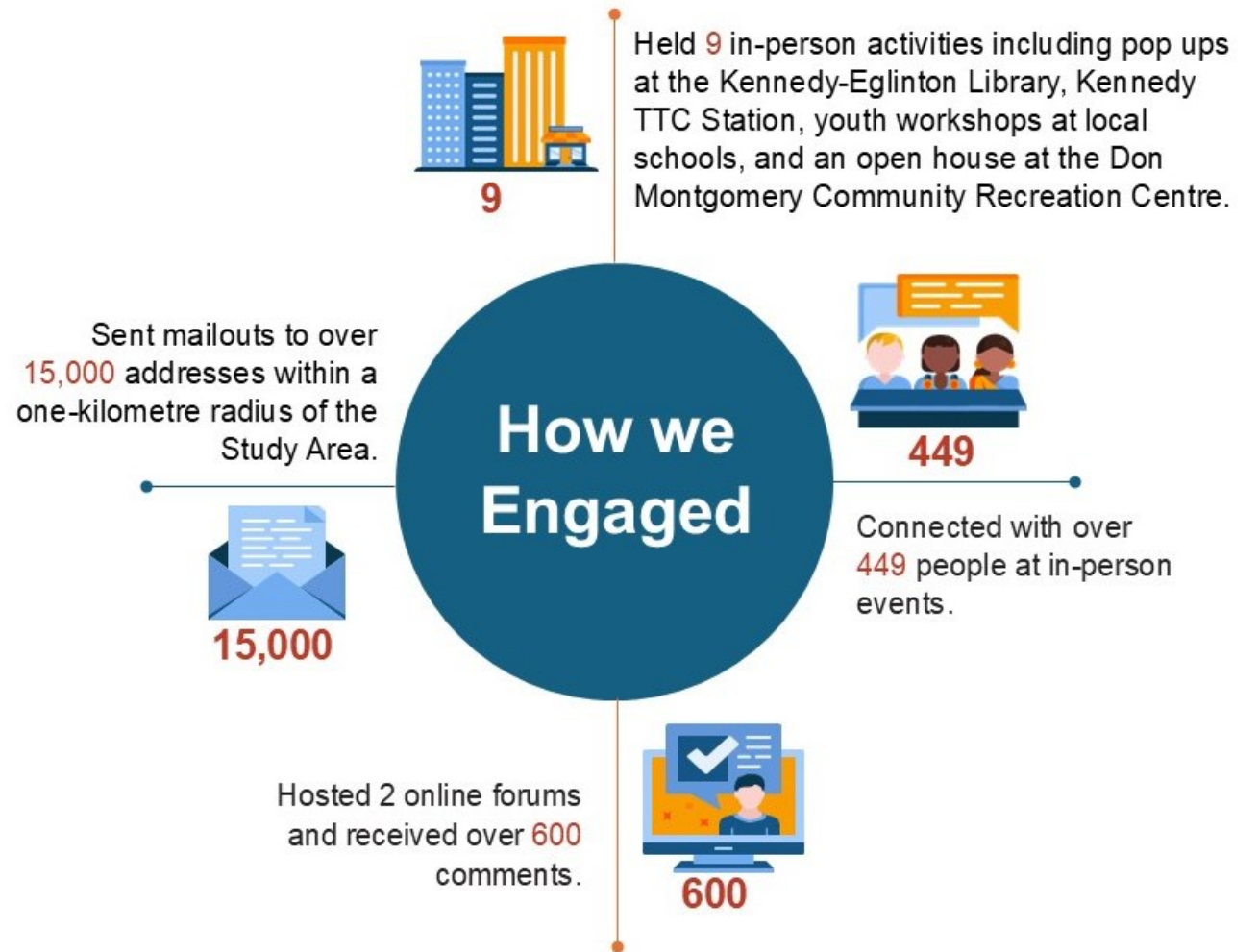
Technical Advisory Committee:

- City Planning & Development Review
- Corporate Real Estate Management
- Environment, Climate and Forestry
- Engineering & Construction Services
- Fire Services
- Parks & Recreation
- Toronto Paramedic Services
- Toronto Water
- Transit Expansion
- Transportation Services
- Transportation Planning
- CreateTO
- Hydro One
- Metrolinx
- Toronto Transit Commission
- Toronto Parking Authority

Study Inputs: Community Participation

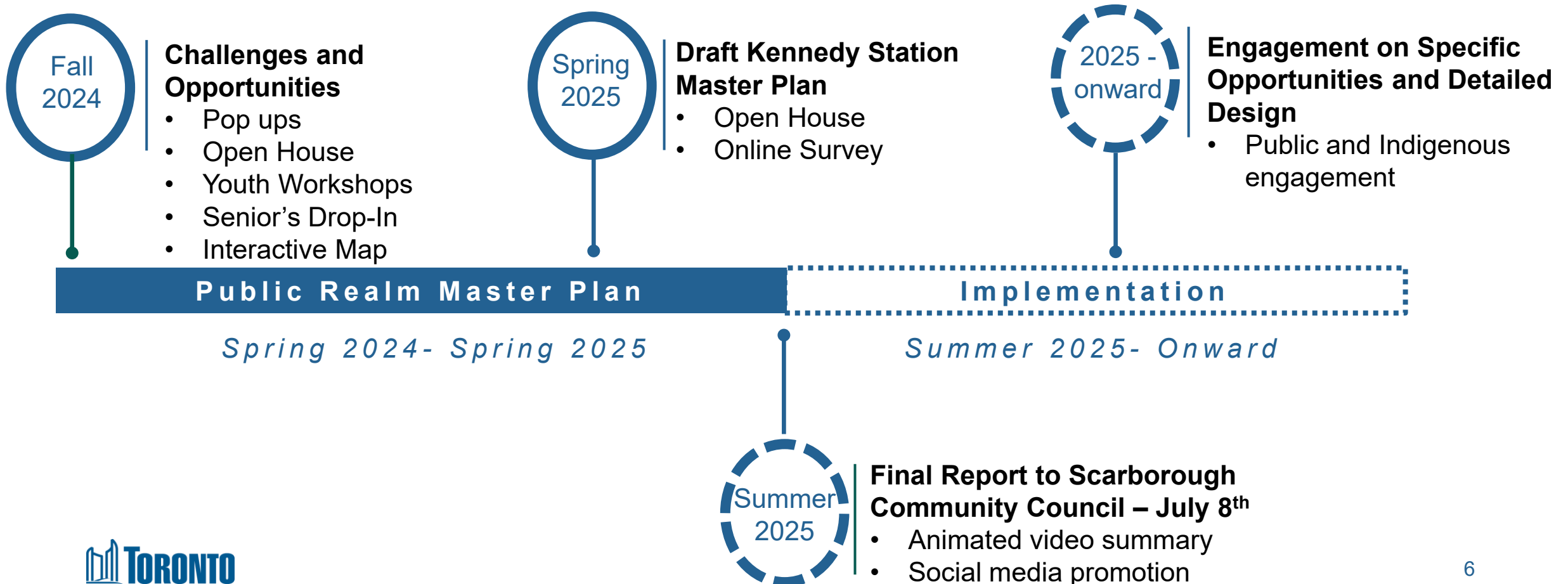
Approach:

- Create opportunities for engagement in already frequented spaces and within existing community programming.
- Reduce barriers through both online and in-person engagement opportunities.



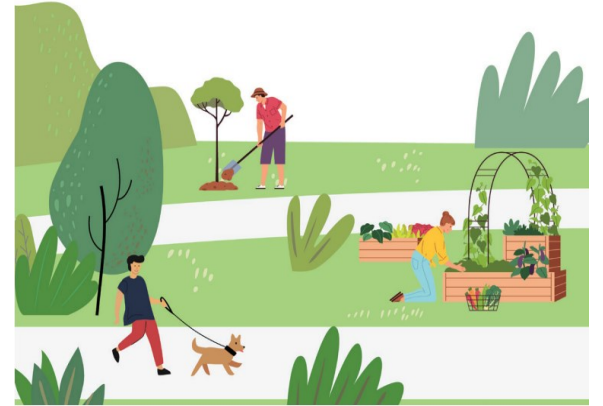
Study Inputs: Community Participation

Engagement Timeline:



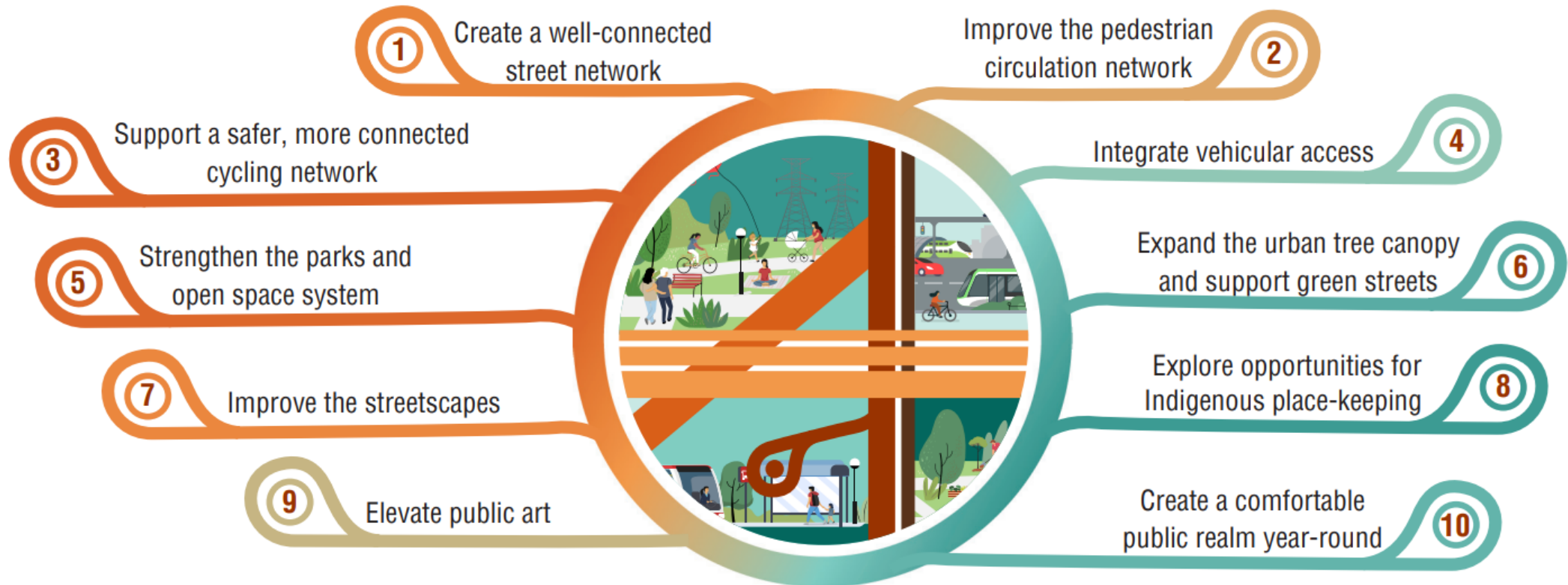
Master Plan Vision

The Kennedy Station Public Realm Master Plan was developed to **guide decision-making** and coordinate public realm improvements across development and transit projects over the next 30 years. The Master Plan will facilitate a **cohesive**, well-connected network of public spaces for everyone—residents, visitors, workers, and commuters—while improving **mobility** and **connectivity**, ensuring **safety** and **comfort**, promoting **placemaking**, and supporting **sustainability and resilience**.



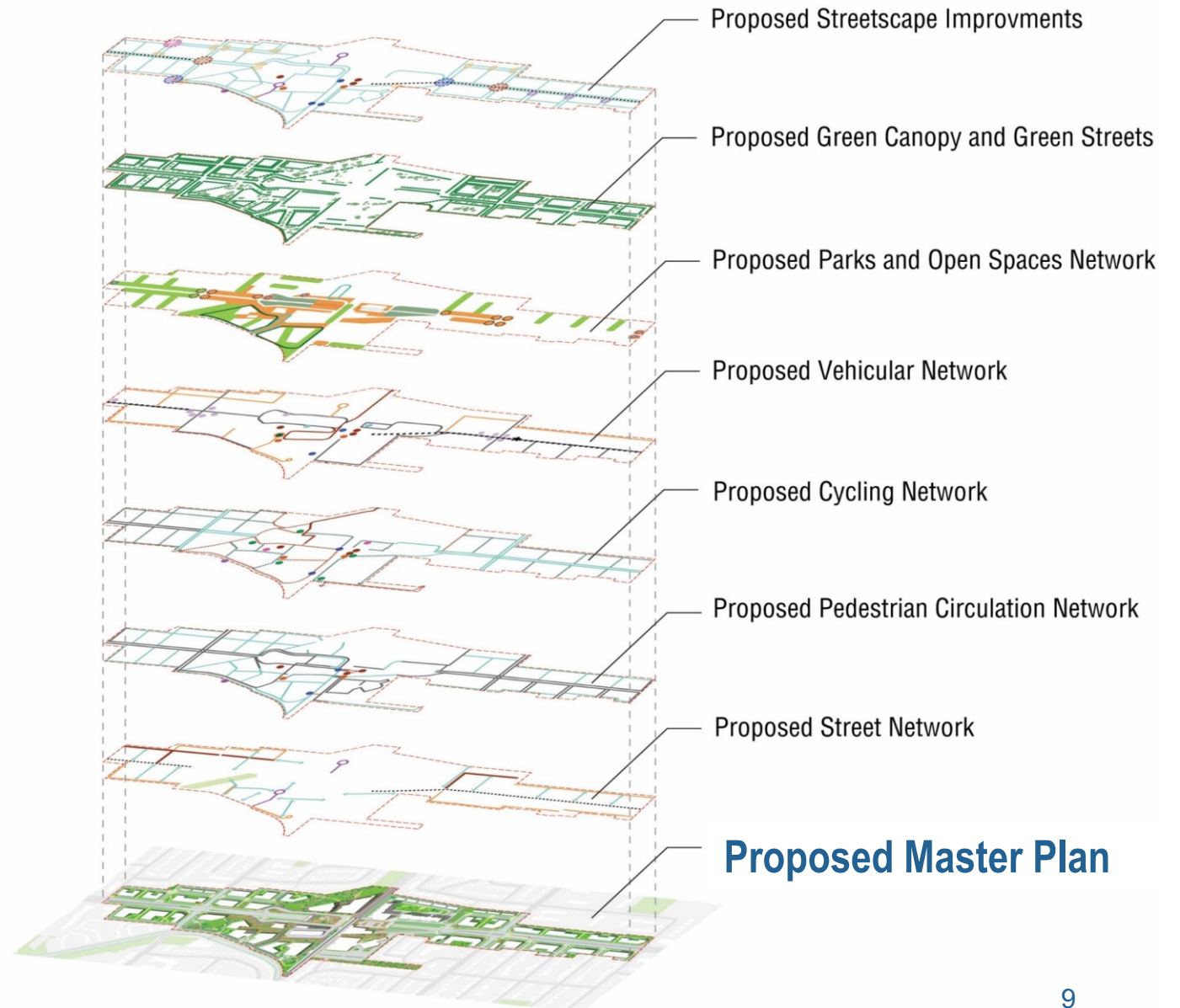
Master Plan Goals

Ten strategic goals have been identified to realize the vision of the Public Realm Master Plan:



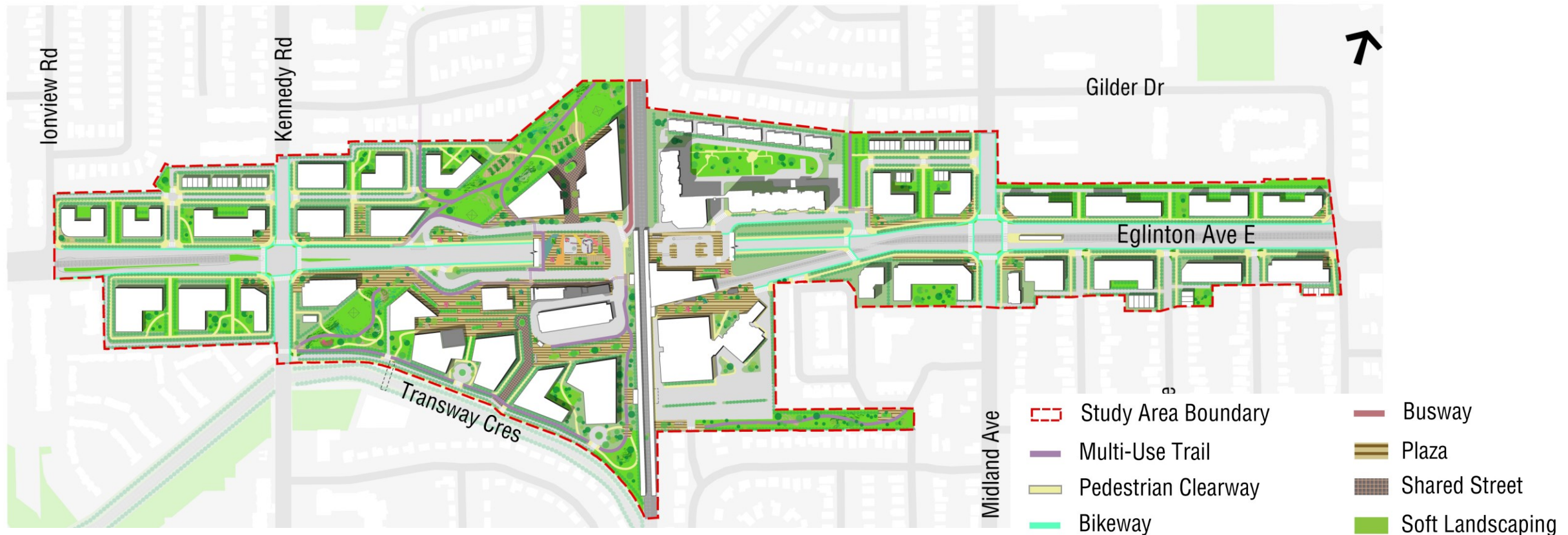
The Master Plan

The 10 goals are key components that collectively establish the Master Plan.



Rendered Master Plan

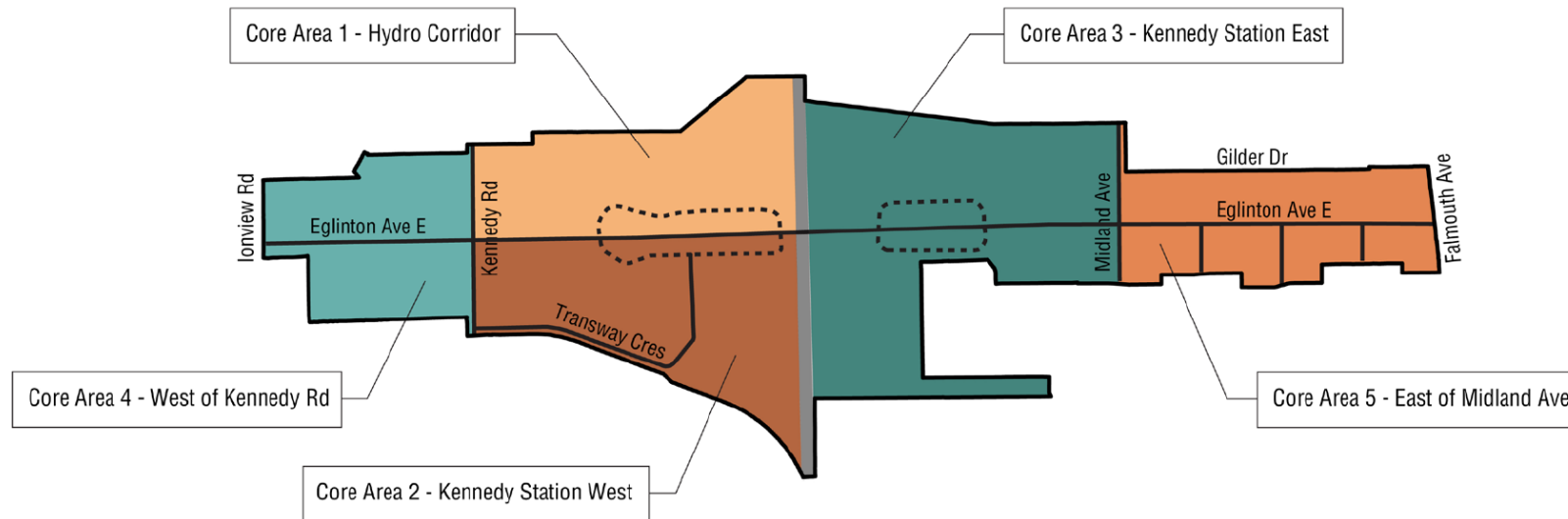
The rendered Master Plan illustrates full build out over a 30-year timeline.



Core Areas & Design Demonstrations

The Study Area is divided into five Core Areas, each featuring area-specific design guidance illustrated through conceptual design demonstrations.

Core Areas:



Design Demonstration:

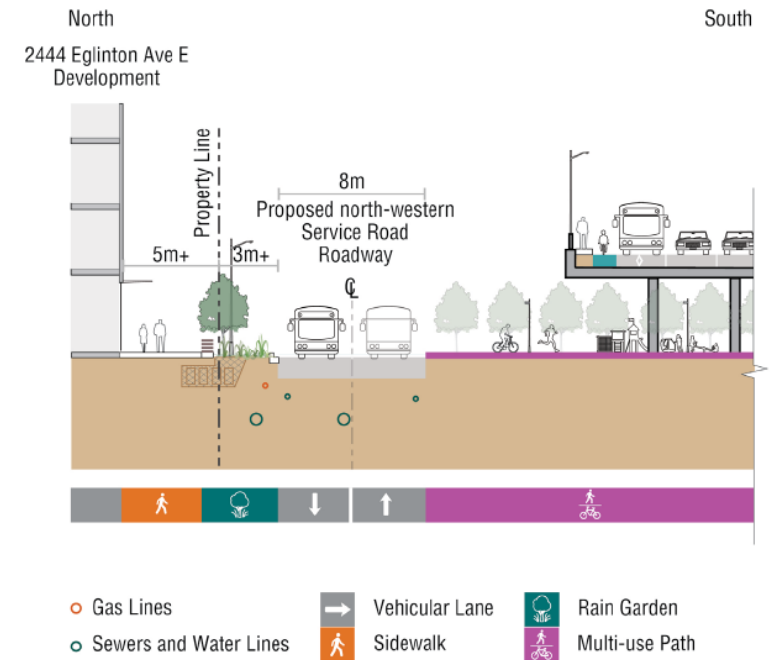


Figure 4.18 Core Area 1 - Section 2

Conceptual Phasing

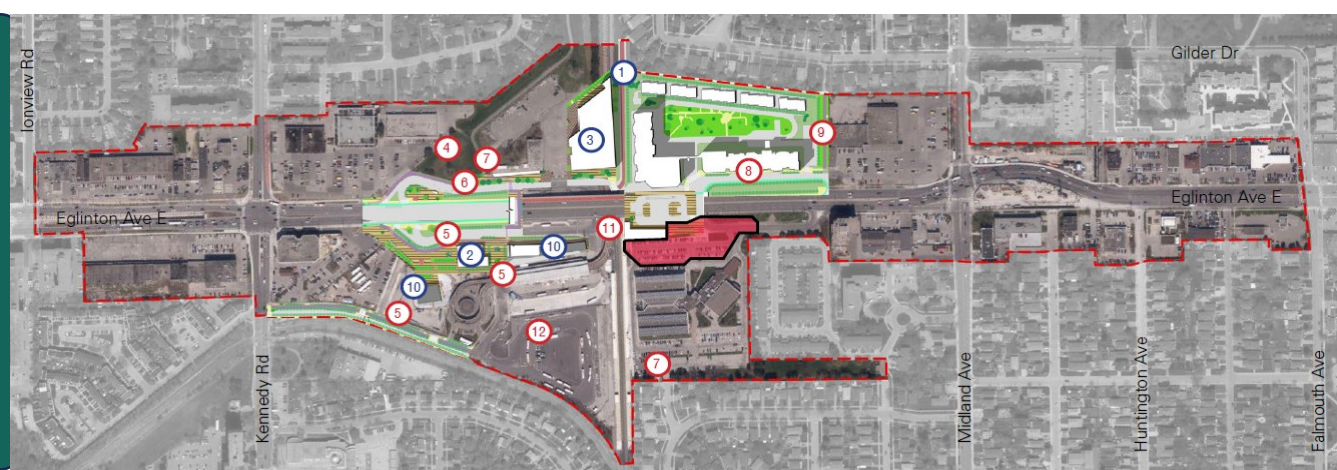
Improvements to the public realm will be completed in a coordinated manner and through three phases:

Phase 1: near-term (first 7 years)

Phase 2: medium-term (approx. 7 to 15 years)

Phase 3: long-term (approx. 15 to 30 years)

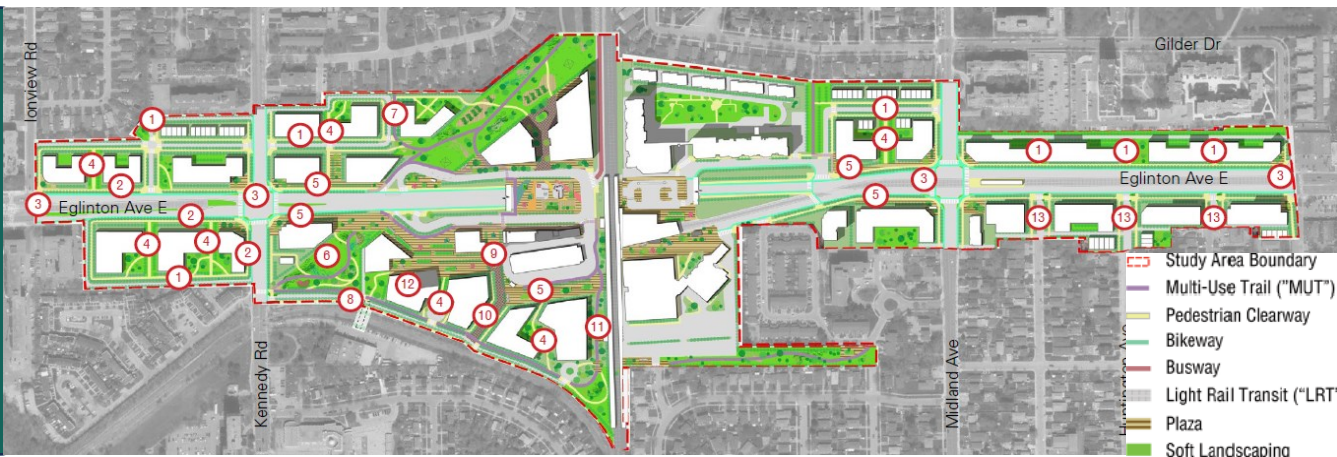
Phase 1



Phase 2



Phase 3



Conceptual Phasing Cont'd

Future Phase: Additional opportunities for 30+ years. This phase represents the ultimate condition for the area's public realm.



- Study Area Boundary
- Multi-Use Trail ("MUT")
- Pedestrian Clearway
- Bikeway
- Busway
- Light Rail Transit ("LRT")
- Plaza
- Soft Landscaping
- Bus Circulation
- Vehicular Circulation
- Plaza spaces

Next Steps

Moving towards Implementation:

- **Coordination** that is collaborative and strategic;
- **Indigenous** and **public engagement** prior to detailed design;
- Assessment of current and changing conditions in the area and **emerging opportunities**;
- Determining **required studies** to inform planning, design, funding, and decision-making matters; and
- Identifying **funding and partnerships** to coordinate infrastructure investments.



Kennedy Station Construction (Credit: Metrolinx)