

Traffic Calming (Speed Humps) - Commons Drive

Date: October 3, 2025

To: Scarborough Community Council

From: Director, Enforcement and Street Management, Transportation Services

Wards: Ward 22, Scarborough-Agincourt

SUMMARY

This staff report is about a matter that Community Council has delegated authority from City Council to make a final decision.

Transportation Services is recommending the installation of speed humps on Commons Drive, between Sheppard Avenue East and Meadowacres Drive. Staff's assessment indicates the criteria as set out in the Traffic Calming Policy has been satisfied. Therefore, speed humps should be installed on Commons Drive.

RECOMMENDATIONS

The Director, Enforcement and Street Management, Transportation Services recommends that:

1. Scarborough Community Council authorize the installation of speed humps on Commons Drive, between Sheppard Avenue East and Meadowacres Drive.
2. Scarborough Community Council direct the City Solicitor to prepare a by-law to alter the roadway for the installation of eight speed humps on Commons Drive, between Sheppard Avenue East and Meadowacres Drive, generally as shown on Attachments 2 and 3, Drawings TC-573 and TC-573-1, dated September 2025, attached to the report entitled "Traffic Calming (Speed Humps) - Commons Drive" from the Director, Enforcement and Street Management, Transportation Services.
3. Subject to approval of Recommendations 1 and 2 above, Scarborough Community Council reduce the speed limit from 40 km/h to 30 km/h on Commons Drive, between Sheppard Avenue East and Meadowacres Drive, in conjunction with the installation of speed humps.

FINANCIAL IMPACT

The estimated cost for installing eight speed humps on Commons Drive is \$32,000.00. Funding would be subject to availability and competing priorities within the Transportation Services 2026 Capital Budget.

DECISION HISTORY

This report addresses a new initiative.

COMMENTS

Transportation Services received a request from the Ward Councillor, on behalf of area residents, to investigate the feasibility of installing speed humps on Commons Drive, between Sheppard Avenue East and Meadowacres Drive. The residents are concerned that motorists travel at a high rate of speed on Commons Drive.

Existing Conditions

Commons Drive is characterized by the following conditions:

- It is a two-lane, north-south, local roadway
- It operates two-way traffic on a pavement width of approximately 8.5 metres
- The daily two-way traffic volume is approximately 1,200 vehicles
- The speed limit is 40 km/h. Transportation Services advises that the speed limit is planned to be reduced to 30 km/h on this street by 2026+, consistent with Item 2019.IE6.8 (Vision Zero 2.0 – Road Safety Plan Update)
- Heavy trucks are prohibited between Sheppard Avenue East and Farmcrest Drive at all times
- Westbound left turns from Sheppard Avenue East to Commons Drive are prohibited between the hours of 7:00 a.m. to 9:00 a.m., Monday to Friday
- There is no Toronto Transit Commission (TTC) service provided
- There are no sidewalks on either side of the street
- There are all-way stop controlled intersections located at Bugle Hill Road, at Farmcrest Drive and at Meadowacres Drive

The adjacent land use in the area is mainly residential, consisting of detached residential dwellings. Wishing Well Park is located at the south end of the street. Commons Drive is not within a designated Community Safety Zone.

A map of the area and proposed locations of the speed humps is included in Attachments 2 and 3.

Study Results

As part of the assessment of the warrant criteria, a vehicle speed and volume study was conducted on Commons Drive from March 4 to 6, 2025.

The study results on Commons Drive disclosed the following:

- 24-hour total vehicle volume is approximately 1,200 vehicles
- The block length from Sheppard Avenue East to Bugle Hill Road is 282 metres, from Bugle Hill Road to Farmcrest Drive is 207 metres, and from Farmcrest Drive to Meadowacres Drive is 93 metres
- The operating speed, which is the speed at which 85 percent of traffic is travelling at or below, was observed at 45 km/h
- The 95th percentile speed, which is the speed at which 95 percent of traffic is travelling at or below, was observed at 51 km/h

Based on the study results, Commons Drive from Sheppard Avenue East to Farmcrest Drive, has satisfied the warrant criteria for both minimum block length and minimum vehicle speed. The block length was greater than 120 metres and the operating speed is 15 km/h over the warranted speed of 30 km/h and the 95th percentile speed is 21 km/h over the warranted speed of 30 km/h.

Commons Drive, between Farmcrest Drive and Meadowacres Drive, has not satisfied the warrant criteria for minimum block length as the block length is 93 metres which is less than the required minimum of 120 metres.

The overall investigation concluded that the eligibility and warrant criteria as outlined in the Traffic Calming Policy has only been satisfied for the section of Commons Drive, between Sheppard Avenue East and Farmcrest Drive. Since this section satisfies the traffic calming warrant criteria, staff recommend the installation of speed humps over the entire length of the street to maintain consistency.

Relative Priority and Other Impacts

In the event that the number of approved requests for roadway traffic calming measures exceeds the budget allocated for installation, funding for approved installations will be prioritized using a Prioritization Score. This score is made up of a Quantitative Score and a Qualitative Score.

The Quantitative Score is based on the results of the data collection, including travel speeds and traffic volumes to prioritize locations with higher vehicle speeds and volumes.

The Qualitative Score includes:

- Collision history to prioritize locations with a history of serious injury or fatal collisions and those involving a pedestrian or cyclist
- Equity to prioritize equity-deserving communities with a high-concentration of priority populations and those that are transportation disadvantaged
- Expected presence of vulnerable road users (elderly population, school children and pedestrians, including transit riders) to prioritize locations with a higher risk of fatal and serious injury collisions

The Quantitative and Qualitative Scores are averaged to provide the complete Prioritization Score. Commons Drive, between Sheppard Avenue East and Meadowacres Drive, scored 48 ranking points out of a possible 100.

No alterations to parking regulations will be required, nor will the number of parking spaces be affected by the installation of speed humps. Installation of speed humps will have minimal effect on winter services, street cleaning and garbage collection.

Consultation with Emergency Services

Consultation with emergency services (Toronto Police Service, Toronto Fire Services and Toronto Paramedic Services) is required to ensure that the design and layout of a traffic calming proposal does not unduly affect their operations. Emergency services were advised of this proposal.

Toronto Paramedic Services responded and advised of potential delays in emergency responses but expressed support for initiatives that enhance community safety. A copy of their full response is included in Attachment 4. Toronto Fire Services and Toronto Police Service has not provided comments back at the time of writing this report. Installing speed humps will result in slower operating speeds for all vehicles, including emergency service vehicles.

The Ward Councillor has been advised of the recommendations in this report.

CONTACT

Dan Clement, CET, Manager Traffic Operations (Area 1), Transportation Services
416-396-3226, Dan.Clement@toronto.ca

SIGNATURE

Mike Barnet, P. Eng.
Director, Enforcement and Street Management, Transportation Services

ATTACHMENTS

Attachment 1: Traffic Calming Warrant - Commons Drive, between Sheppard Avenue East and Meadowacres Drive

Attachment 2: Speed Hump Locations Plan - Commons Drive, Meadowacres Drive - Sheppard Avenue East (Matchline, see drawing TC-573-1)

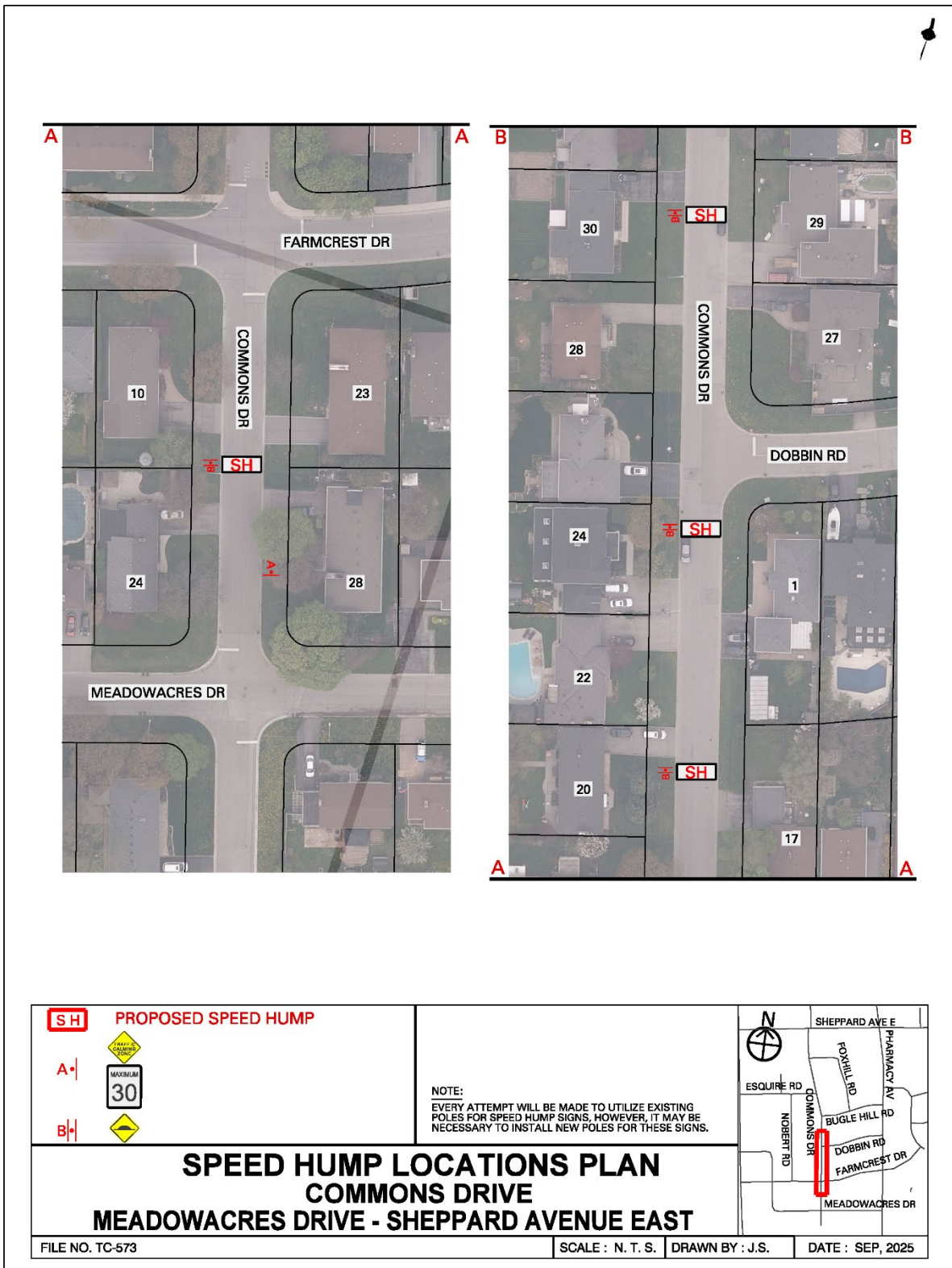
Attachment 3: Speed Hump Locations Plan - Commons Drive, Meadowacres Drive - Sheppard Avenue East

Attachment 4: Letter from Toronto Paramedic Services, dated September 9, 2025

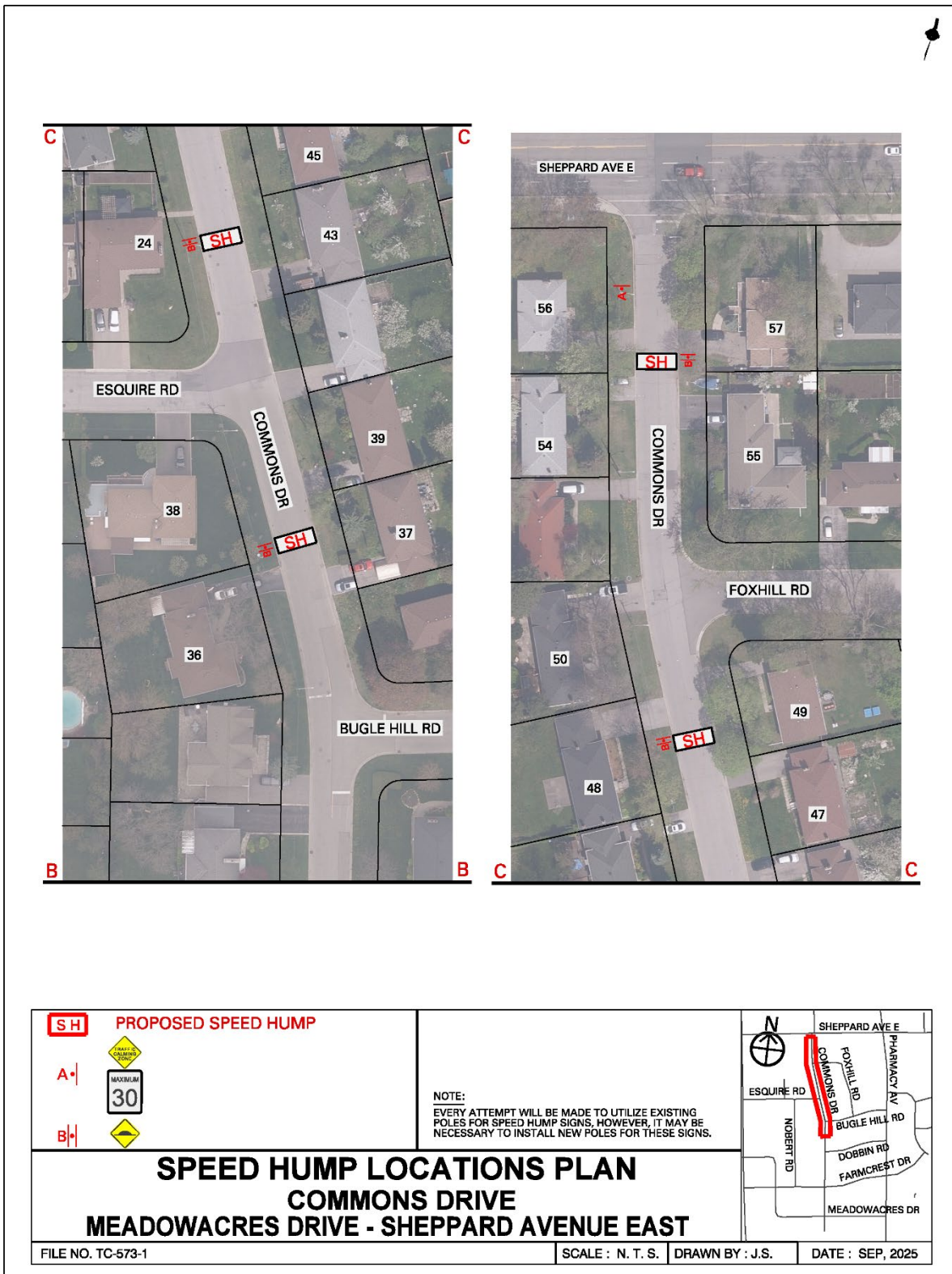
Attachment 1: Traffic Calming Warrant - Commons Drive, between Sheppard Avenue East and Meadowacres Drive

Criteria		Requirement	Warrant Satisfied?
Community Support		A direct request from the Ward Councillor OR identified by Transportation Services in consultation with the Ward Councillor	Yes
Eligibility Criteria	Road Classification	Classified as a local or collector roadway, according to the Toronto Road Classification System	Yes
	Sidewalks	Presence of a sidewalk on at least one side of a local roadway and both sides of a collector roadway is preferred but not required	No
	Traffic Volume	Maximum average daily traffic volume of less than 8,000 vehicles per day	Yes
	Road Grade	Maximum roadway grade of up to 5%, can be considered in locations where the road grade is between 5% and 8% with additional review	Yes
	Emergency Services	No significant impacts on emergency services, including Toronto Fire, Paramedic and Police Services	Yes
	Transit Services	No significant impacts to regularly scheduled Toronto Transit Commission (TTC) services	N/A
Warrant Criteria	Minimum Block Length	Minimum block length of 120 metres based on the measured distance from centre to centre of controlled intersections AND	Yes (282 m and 207 m) No (93 m)
	85th percentile speed	Minimum 85th percentile speed of 8 km/h over the warranted speed limit OR	Yes (15 km/h)
	95th percentile speed	Minimum 95th percentile speed of 15 km/h over the warranted speed limit	Yes (21 km/h)

Attachment 2: Speed Hump Locations Plan - Commons Drive, Meadowacres Drive - Sheppard Avenue East (Matchline, see drawing TC-573-1)



Attachment 3: Speed Hump Locations Plan - Commons Drive, between Sheppard Avenue East and Meadowacres Drive



Attachment 4: Letter from Toronto Paramedic Services, dated September 9, 2025

From: [EMS Planning](#)
To: [Ghamdan Al-mukardj](#)
Cc: [EMS Planning](#)
Subject: RE: Traffic Calming Speed Humps_ Commons Drive
Date: September 9, 2025 9:07:52 AM
Attachments: [image002.png](#)
[image003.png](#)

Good Morning Ghamdan,

We have received and reviewed the proposal for installation of speed humps on Commons Drive, between Sheppard Avenue East and Meadowacres Drive, with the following comments:

The installation of speed humps on Commons Drive, between Sheppard Avenue East and Meadowacres Drive, will impact response and transport times for residents that reside on the roadway speed humps are installed. Impacts may extend to community members if Commons Drive, between Sheppard Avenue East and Meadowacres Drive, serves access to other roadways. It is important that the applicant understands that the installation of traffic calming devices will reduce the speed that emergency vehicles travel when responding to emergencies on roadways where they are installed.

Toronto Paramedic Services is supportive of community initiatives that improve the safety of all citizens of, and visitors to, the City of Toronto. Traffic and pedestrian safety are key components of a healthy neighbourhood, and we endeavour to support the wishes of the community to implement measures to improve upon these components.

